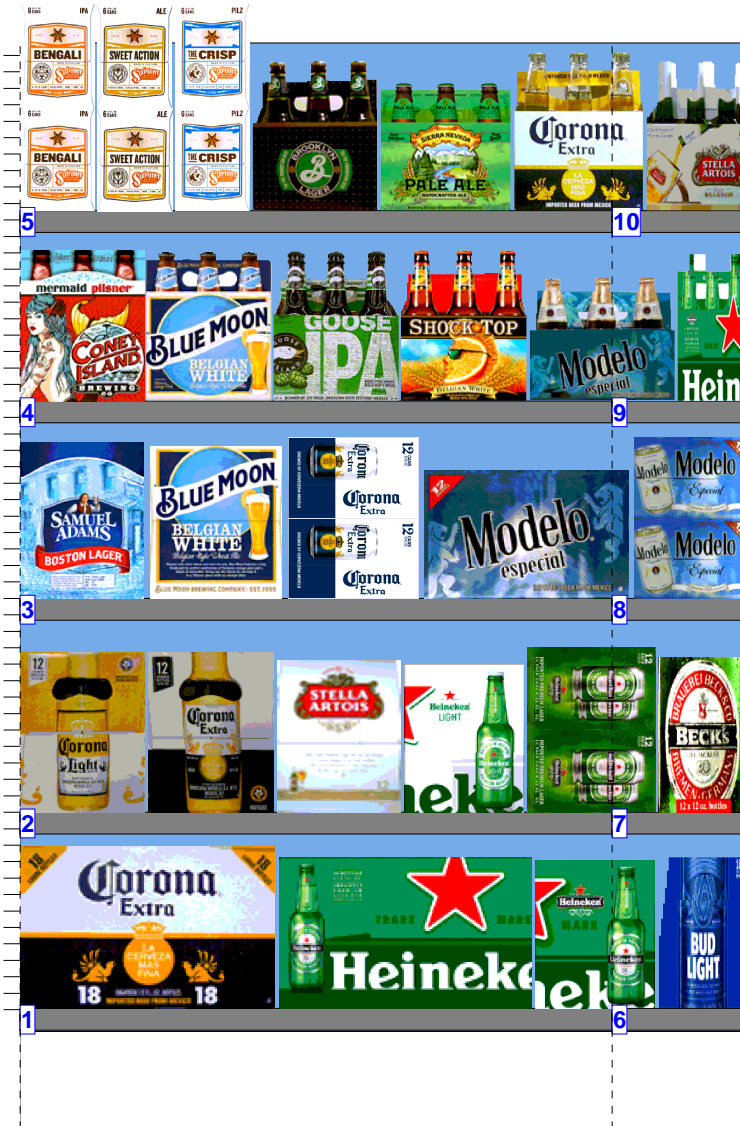




WALGREENS 11808 WARM.psa



Store # 11808 H: 5 ft 6.00 in W: 9 ft D: 1 ft 10.00 in # of segments: 3

| 1 | | W:36.00 in | D:22.00 in | Avail Space: -2.03 in | | Ht Space: 10.61 in | |
|------------|---------------------|------------|------------|-----------------------|-------|--------------------|--|
| UPC | Name | Category | HFacings | Orientation | Units | | |
| 8066095680 | Corona Extra 18/12B | Imports | 1 | Front | 2 | | |
| 7289000152 | Heineken 18/12B | Imports | 1 | Front | 2 | | |
| 7289000016 | Heineken 12/12B | Imports | 1 | Side | 2 | | |

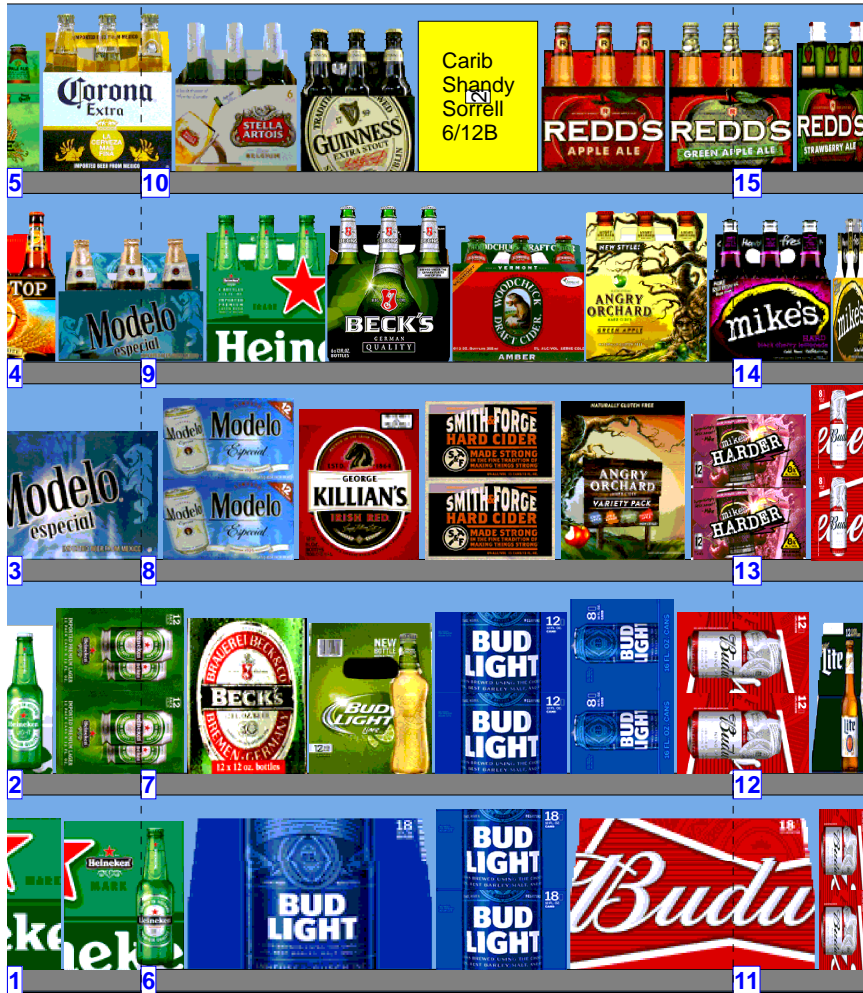
| 2 | | W:36.00 in | D:22.00 in | Avail Space: -1.68 in | | Ht Space: 11.68 in | |
|-------------|-------------------------------|------------|------------|-----------------------|-------|--------------------|--|
| UPC | Name | Category | HFacings | Orientation | Units | | |
| 8066095675 | Corona Light 12/12B | Imports | 1 | Side | 2 | | |
| 8066095615 | Corona Extra 12/12B | Imports | 1 | Side | 2 | | |
| 78615000014 | Stella Artois 12/11B | Imports | 1 | Side | 2 | | |
| 7289000159 | Heineken Premium Light 12/12B | Imports | 1 | Side | 2 | | |
| 7289000020 | Heineken 12/12C | Imports | 1 | Side 90 | 4 | | |

| 3 | | W:36.00 in | D:22.00 in | Avail Space: 0.24 in | | Ht Space: 10.68 in | |
|------------|------------------------------------|------------|------------|----------------------|-------|--------------------|--|
| UPC | Name | Category | HFacings | Orientation | Units | | |
| 8769210014 | Samuel Adams Boston Lgr 12/12B | Micro | 1 | Side | 2 | | |
| 7199009516 | Blue Moon Belgian White Ale 12/12B | Specialty | 1 | Side | 2 | | |
| 8066095695 | Corona Extra 12/12C | Imports | 1 | Side 90 | 4 | | |
| 8066095757 | Modelo 12/12B | Imports | 1 | Front | 2 | | |

| 4 | | W:36.00 in | D:22.00 in | Avail Space: -3.40 in | | Ht Space: 10.25 in | |
|-------------|------------------------------------|------------|------------|-----------------------|-------|--------------------|--|
| UPC | Name | Category | HFacings | Orientation | Units | | |
| 88715100094 | Coney Island Mermaid Pilsner 6/12B | Micro | 1 | Front | 4 | | |
| 7199009511 | Blue Moon Belgian White Ale 6/12B | Specialty | 1 | Front | 4 | | |
| 73692011132 | Goose Island India Pale Ale 6/12B | Micro | 1 | Front | 4 | | |
| 1820013986 | Shock Top Belgian White Ale 6/12B | Specialty | 1 | Front | 4 | | |
| 8066095765 | Modelo 6/12B | Imports | 1 | Front | 3 | | |

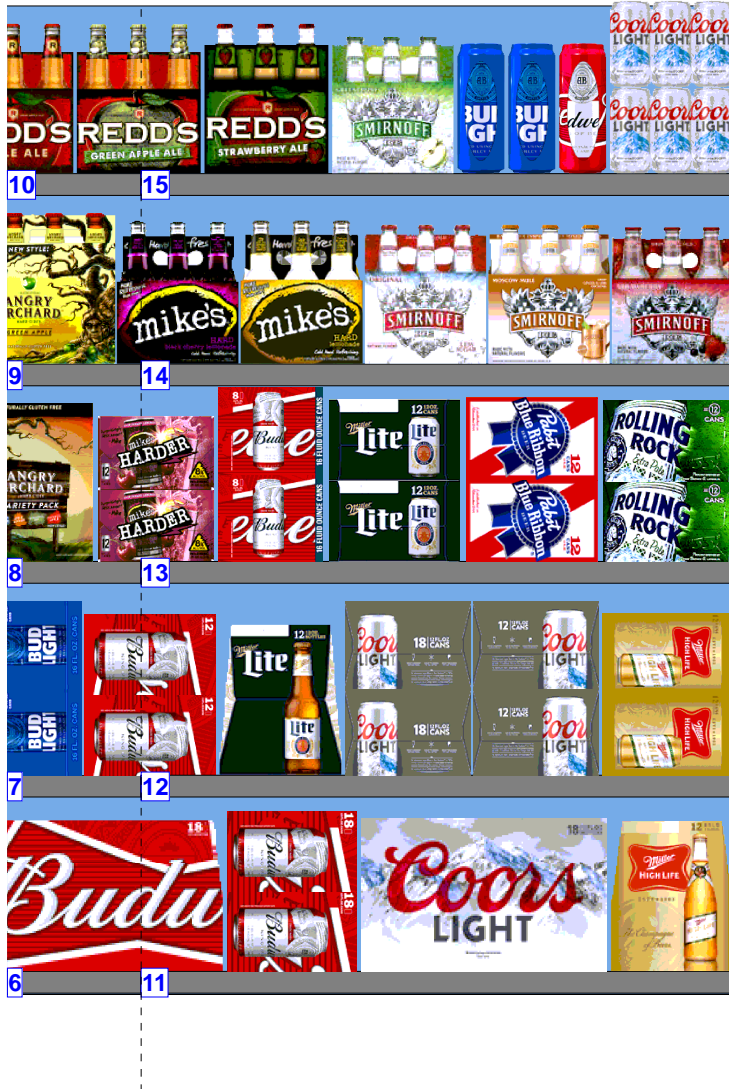
| 5 | | W:36.00 in | D:22.00 in | Avail Space: -0.78 in | | Ht Space: 10.18 in | |
|-------------|------------------------------|------------|------------|-----------------------|-------|--------------------|--|
| UPC | Name | Category | HFacings | Orientation | Units | | |
| 85909300243 | SixPoint Bengali 6/12C | Micro | 1 | Side | 6 | | |
| 85909300242 | SixPoint Sweet Action 6/12C | Micro | 1 | Side | 6 | | |
| 85909300244 | SixPoint The Crisp 6/12C | Micro | 1 | Side | 6 | | |
| 3061300001 | Brooklyn Lager 6/12B | Micro | 1 | Front | 4 | | |
| 8378337521 | Sierra Nevada Pale Ale 6/12B | Micro | 1 | Front | 4 | | |
| 8066095605 | Corona Extra 6/12B | Imports | 1 | Front | 4 | | |

WALGREENS 11808 WARM.psa



| Store # 11808 H: 5 ft 6.00 in W: 9 ft D: 1 ft 10.00 in # of segments: 3 | | | | | | |
|---|-----------------------------------|------------|------------|-----------------------|--------------------|--|
| 6 | | W:36.00 in | D:22.00 in | Avail Space: -1.63 in | Ht Space: 10.61 in | |
| UPC | Name | Category | HFacings | Orientation | Units | |
| 1820053308 | Bud Light 18/12B | Premium | 1 | Front | 2 | |
| 1820053218 | Bud Light 18/12C | Premium | 1 | Side 90 | 2 | |
| 1820011308 | Budweiser 18/12B | Premium | 1 | Front | 2 | |
| 7 | | W:36.00 in | D:22.00 in | Avail Space: 7.14 in | Ht Space: 11.68 in | |
| UPC | Name | Category | HFacings | Orientation | Units | |
| 8248812300 | Becks 12/12B | Imports | 1 | Side | 2 | |
| 1820014990 | Bud Light Lime 12/12B | Specialty | 1 | Side | 2 | |
| 1820053047 | Bud Light 12/12C | Premium | 1 | Side 90 | 4 | |
| 1820008989 | Bud Light 8/16C | Premium | 1 | Side | 4 | |
| 8 | | W:36.00 in | D:22.00 in | Avail Space: 5.51 in | Ht Space: 10.68 in | |
| UPC | Name | Category | HFacings | Orientation | Units | |
| 8066095715 | Modelo 12/12C | Imports | 1 | Side 90 | 4 | |
| 7199076400 | George Killian's Irish Red 12/12B | Specialty | 1 | Side | 2 | |
| 7199009687 | Smith & Forge Hard Cider 12/12C | Cider | 1 | Side 90 | 4 | |
| 8769200017 | Angry Orchard Variety Pack 12/12B | Cider | 1 | Side | 2 | |
| 9 | | W:36.00 in | D:22.00 in | Avail Space: 5.91 in | Ht Space: 10.25 in | |
| UPC | Name | Category | HFacings | Orientation | Units | |
| 7289000011 | Heineken 6/12B | Imports | 1 | Front | 4 | |
| 8248812345 | Becks 6/12B | Imports | 1 | Front | 4 | |
| 1497450009 | Woodchuck Amber 6/12B | Cider | 1 | Front | 4 | |
| 8769200149 | Angry Orchard Green Apple 6/12B | Cider | 1 | Front | 4 | |
| 10 | | W:36.00 in | D:22.00 in | Avail Space: -0.67 in | Ht Space: 10.18 in | |
| UPC | Name | Category | HFacings | Orientation | Units | |
| 78615000001 | Stella Artois 6/11B | Imports | 1 | Front | 4 | |
| 8382012393 | Guinness Extra Stout 6/11B | Imports | 1 | Front | 4 | |
| 79871322008 | Carib Shandy Sorrell 6/12B | Imports | 1 | Front | 4 | |
| 3410008716 | Redd's Apple Ale 6/12B | Specialty | 1 | Front | 4 | |
| 3410008746 | Redd's Green Apple 6/12B | Specialty | 1 | Front | 4 | |

WALGREENS 11808 WARM.psa



| Store # 11808 H: 5 ft 6.00 in W: 9 ft D: 1 ft 10.00 in # of segments: 3 | | | | | | |
|---|------------------------------------|-----------------------|----------|--------------------|-------|--|
| 11 W:36.00 in D:22.00 in | | Avail Space: 5.77 in | | Ht Space: 10.61 in | | |
| UPC | Name | Category | HFacings | Orientation | Units | |
| 1820011218 | Budweiser 18/12C | Premium | 1 | Side 90 | 2 | |
| 7199030078 | Coors Light 18/12B | Premium | 1 | Front | 2 | |
| 3410001509 | Miller High Life 12/12B | Sub Premium | 1 | Side | 2 | |
| 12 W:36.00 in D:22.00 in | | Avail Space: -2.50 in | | Ht Space: 11.68 in | | |
| UPC | Name | Category | HFacings | Orientation | Units | |
| 1820011047 | Budweiser 12/12C | Premium | 1 | Side 90 | 4 | |
| 3410057509 | Miller Lite 12/12B | Premium | 1 | Side | 2 | |
| 7199030017 | Coors Light 18/12C | Premium | 1 | Side 90 | 2 | |
| 7199000048 | Coors Light 12/12C | Premium | 1 | Side 90 | 4 | |
| 3410001636 | Miller High Life 12/12C | Sub Premium | 1 | Side 90 | 4 | |
| 13 W:36.00 in D:22.00 in | | Avail Space: -0.95 in | | Ht Space: 10.68 in | | |
| UPC | Name | Category | HFacings | Orientation | Units | |
| 63598525948 | Mikes HARDER Blk Cherry Lemon... | FMB | 1 | Side 90 | 4 | |
| 1820008981 | Budweiser 8/16C | Premium | 1 | Side | 4 | |
| 3410057636 | Miller Lite 12/12C | Premium | 1 | Side 90 | 4 | |
| 2210000170 | Pabst 12/12C | Sub Premium | 1 | Side 90 | 4 | |
| 7143934450 | Rolling Rock 12/12C | Sub Premium | 1 | Side 90 | 4 | |
| 14 W:36.00 in D:22.00 in | | Avail Space: -1.01 in | | Ht Space: 10.25 in | | |
| UPC | Name | Category | HFacings | Orientation | Units | |
| 63598506744 | Mikes Hard Black Cherry Lemonad... | FMB | 1 | Front | 4 | |
| 63598510062 | Mikes Hard Lemonade 6/11B | FMB | 1 | Front | 4 | |
| 8200072385 | Smirnoff Ice 6/11B | FMB | 1 | Front | 4 | |
| 8200076200 | Smirnoff Ice Seasonal 6/11B | FMB | 1 | Front | 4 | |
| 8200074001 | Smirnoff Ice Strawberry Acai 6/11B | FMB | 1 | Front | 4 | |
| 15 W:36.00 in D:22.00 in | | Avail Space: 4.96 in | | Ht Space: 10.18 in | | |
| UPC | Name | Category | HFacings | Orientation | Units | |
| 3410008730 | Redd's Strawberry Ale 6/12B | Specialty | 1 | Front | 4 | |
| 8200072751 | Smirnoff Ice Green Apple 6/11B | FMB | 1 | Front | 4 | |
| 1820021986 | Bud Light 3/25C | Premium | 2 | Side | 4 | |
| 1820021985 | Budweiser 3/25C | Premium | 1 | Side | 2 | |
| 7199000008 | Coors Light 6/12C | Premium | 1 | Front | 8 | |