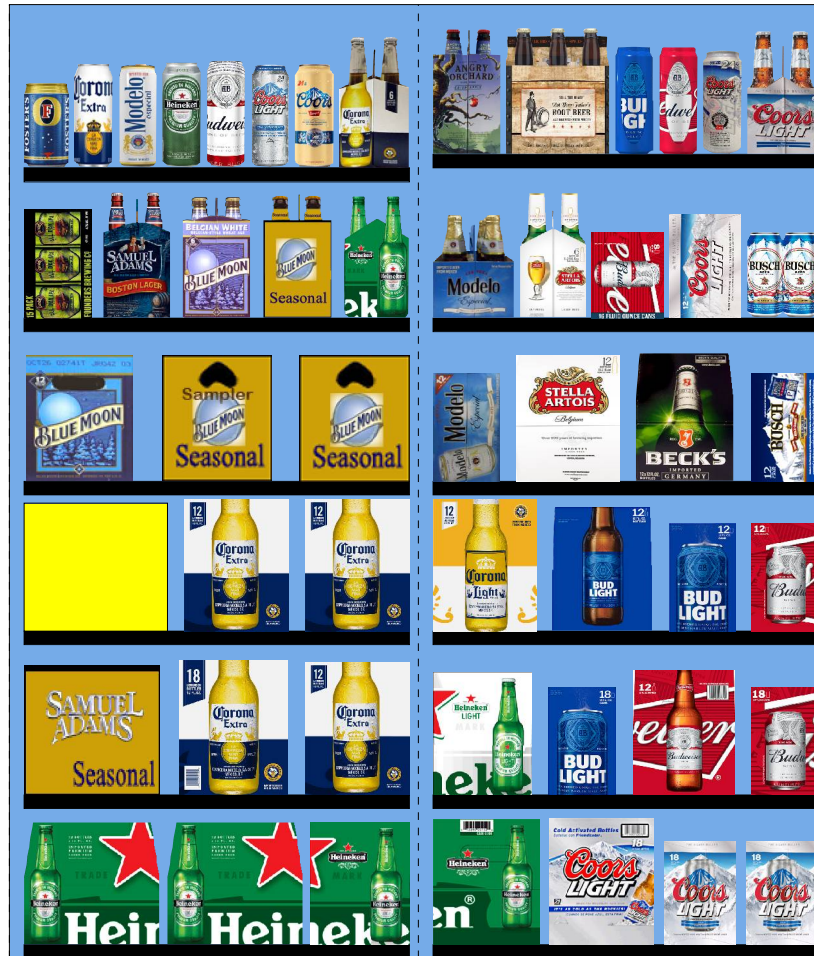


4319.psa For Validation Purposes Only NOT FINAL



Printed: 4/19/2016

Traffic Flow Left-right

POG: 4319.psa



POG Size: 5'0.00

Segments 1 - 2 of 2

Page: 1

SCHEMATIC BACKING REPORT

4319.psa

Planogram: 4319.psa

Segment #1 : Shelf #6 DEPTH: 36 in WIDTH: 28 in DISTANCE FROM TOP OF BASE SHELF TO BOTTOM OF SHELF: 0.00 in									
POS	# FAC	UPC	ID	NAME	CASES	CAPACITY	UNITS HIGH	DOS	MVMT
22	2	7289000016	7289000016	Heineken 12/12B	5.0	10	1	1.3	54.4
Segment #1 : Shelf #5 DEPTH: 36 in WIDTH: 28 in DISTANCE FROM TOP OF BASE SHELF TO BOTTOM OF SHELF: 11.00 in									
POS	# FAC	UPC	ID	NAME	CASES	CAPACITY	UNITS HIGH	DOS	MVMT
19	1	8769201103	8769201103	Samuel Adams Seasonal 12/12B	2.0	4	1	36.4	0.8
20	1	8066095680	8066095680	Corona Extra 18/12B	2.0	2	1	23.5	0.6
21	1	8066095615	8066095615	Corona Extra 12/12B	1.5	3	1	1.6	40.0
Segment #1 : Shelf #4 DEPTH: 36 in WIDTH: 28 in DISTANCE FROM TOP OF BASE SHELF TO BOTTOM OF SHELF: 23.00 in									
POS	# FAC	UPC	ID	NAME	CASES	CAPACITY	UNITS HIGH	DOS	MVMT
17	1	85375900063	85375900063	Southern Tier Super Pack 12/12B	2.0	4	1	0.0	0.0
18	2	8066095615	8066095615	Corona Extra 12/12B	3.0	6	1	1.6	40.0
Segment #1 : Shelf #3 DEPTH: 36 in WIDTH: 28 in DISTANCE FROM TOP OF BASE SHELF TO BOTTOM OF SHELF: 34.00 in									
POS	# FAC	UPC	ID	NAME	CASES	CAPACITY	UNITS HIGH	DOS	MVMT
14	1	7199009516	7199009516	Blue Moon Belgian White Ale 12/12B	1.5	3	1	1.7	12.3
15	1	7199009554	7199009554	Blue Moon Brewmaster's Sampler 12/12B	1.5	3	1	8.5	2.5
16	1	7199009536	7199009536	Blue Moon Seasonal 12/12B	1.5	3	1	8.8	2.4
Segment #1 : Shelf #2 DEPTH: 36 in WIDTH: 28 in DISTANCE FROM TOP OF BASE SHELF TO BOTTOM OF SHELF: 46.00 in									
POS	# FAC	UPC	ID	NAME	CASES	CAPACITY	UNITS HIGH	DOS	MVMT
9	1	64286090024	64286090024	Founders All Day IPA 15/12C	1.0	2	1	0.0	0.0
10	1	8769210012	8769210012	Samuel Adams Boston Lgr 6/12B	1.0	4	1	8.5	3.3
11	1	7199009511	7199009511	Blue Moon Belgian White Ale 6/12B	1.0	4	1	7.2	3.9
12	1	7199009532	7199009532	Blue Moon Seasonal 6/12B	1.0	4	1	7.7	3.6
13	1	7289000011	7289000011	Heineken 6/12B	1.0	4	1	3.6	7.8
Segment #1 : Shelf #1 DEPTH: 36 in WIDTH: 28 in DISTANCE FROM TOP OF BASE SHELF TO BOTTOM OF SHELF: 57.00 in									
POS	# FAC	UPC	ID	NAME	CASES	CAPACITY	UNITS HIGH	DOS	MVMT
1	1	7089701331	7089701331	Fosters Lager 1/25C	0.8	10	1	8.4	8.3
2	1	8066095643	8066095643	Corona Extra 1/24C	1.0	12	1	14.4	5.8
3	1	8066095721	8066095721	Modelo 1/24C	1.0	12	1	0.0	0.0
4	1	7289000119	7289000119	Heineken 1/24C	1.0	12	1	4.4	19.1
5	1	1820025000	1820025000	Budweiser 1/25C	0.8	12	1	11.1	7.5
6	1	7199030065	7199030065	Coors Light 1/24C	1.0	12	1	7.5	11.2
7	1	7199010071	7199010071	Coors 1/24C	1.0	12	1	5.4	15.6
8	1	8066095605	8066095605	Corona Extra 6/12B	1.0	4	1	2.0	14.0
Segment #2 : Shelf #6 DEPTH: 36 in WIDTH: 28 in DISTANCE FROM TOP OF BASE SHELF TO BOTTOM OF SHELF: 0.00 in									
POS	# FAC	UPC	ID	NAME	CASES	CAPACITY	UNITS HIGH	DOS	MVMT
46	1	7289000152	7289000152	Heineken 18/12B	2.0	2	1	0.0	0.0
47	1	7199030078	7199030078	Coors Light 18/12B	2.0	2	1	0.0	0.0
48	2	7199030017	7199030017	Coors Light 18/12C	4.0	4	1	1.9	15.0
Segment #2 : Shelf #5 DEPTH: 36 in WIDTH: 28 in DISTANCE FROM TOP OF BASE SHELF TO BOTTOM OF SHELF: 11.00 in									

SCHEMATIC BACKING REPORT

4319.psa

POS	# FAC	UPC	ID	NAME	CASES	CAPACITY	UNITS HIGH	DOS	MVMT
42	1	7289000159	7289000159	Heineken Premium Light 12/12B	1.5	3	1	3.4	6.2
43	1	1820053218	1820053218	Bud Light 18/12C	2.0	2	1	3.4	4.1
44	1	1820000771	1820000771	Budweiser 12/12B	1.5	3	1	4.4	4.8
45	1	1820011218	1820011218	Budweiser 18/12C	2.0	2	1	3.5	4.0

Segment #2 : Shelf #4 DEPTH: 36 in WIDTH: 28 in DISTANCE FROM TOP OF BASE SHELF TO BOTTOM OF SHELF: 23.00 in

POS	# FAC	UPC	ID	NAME	CASES	CAPACITY	UNITS HIGH	DOS	MVMT
38	1	8066095675	8066095675	Corona Light 12/12B	1.5	3	1	10.5	2.0
39	1	1820000769	1820000769	Bud Light 12/12B	1.5	3	1	3.8	5.5
40	1	1820053047	1820053047	Bud Light 12/12C	1.5	3	1	4.4	4.8
41	1	1820011047	1820011047	Budweiser 12/12C	1.5	3	1	2.1	10.0

Segment #2 : Shelf #3 DEPTH: 36 in WIDTH: 28 in DISTANCE FROM TOP OF BASE SHELF TO BOTTOM OF SHELF: 34.00 in

POS	# FAC	UPC	ID	NAME	CASES	CAPACITY	UNITS HIGH	DOS	MVMT
34	1	8066095715	8066095715	Modelo 12/12C	1.5	3	1	3.7	5.6
35	1	78615000014	78615000014	Stella Artois 12/11B	1.5	3	1	2.1	10.1
36	1	8248812300	8248812300	Becks 12/12B	1.5	3	1	2.4	8.8
37	1	1820061047	1820061047	Busch 12/12C	1.5	3	1	0.0	0.0

Segment #2 : Shelf #2 DEPTH: 36 in WIDTH: 28 in DISTANCE FROM TOP OF BASE SHELF TO BOTTOM OF SHELF: 46.00 in

POS	# FAC	UPC	ID	NAME	CASES	CAPACITY	UNITS HIGH	DOS	MVMT
29	1	8066095765	8066095765	Modelo 6/12B	1.0	4	1	90.9	0.3
30	1	78615000001	78615000001	Stella Artois 6/11B	1.0	4	1	51.7	0.5
31	1	1820008981	1820008981	Budweiser 8/16C	1.0	3	1	0.0	0.0
32	1	7199000048	7199000048	Coors Light 12/12C	1.5	3	1	3.9	5.4
33	1	1820000063	1820000063	Busch 6/16C	1.0	4	1	0.0	0.0

Segment #2 : Shelf #1 DEPTH: 36 in WIDTH: 28 in DISTANCE FROM TOP OF BASE SHELF TO BOTTOM OF SHELF: 58.00 in

POS	# FAC	UPC	ID	NAME	CASES	CAPACITY	UNITS HIGH	DOS	MVMT
23	1	8769282102	8769282102	Angry Orchard Crisp Apple 6/12B	1.0	4	1	0.0	0.0
24	1	9200002000	9200002000	Small Town Not Your Fathers RtBr 6/12B	1.8	7	1	91.1	0.5
25	1	1820021986	1820021986	Bud Light 3/25C	0.8	4	1	0.0	0.0
26	1	1820021985	1820021985	Budweiser 3/25C	0.8	4	1	0.0	0.0
27	1	7199030120	7199030120	Coors Light 3/24C	0.8	4	1	0.0	0.0
28	1	7199030005	7199030005	Coors Light 6/12B	1.0	4	1	5.9	4.8

SKUs on Planogram: 47

UNALLOCATED ITEMS/OPTIONAL ITEMS

4319.psa

UNALLOCATED SKU REPORT

	UPC	NAME	MVMT	Profit	Sales	Category	Manufacturer
1	3410001509	Miller High Life 12/12B	0.000	\$0.00	\$0.00	Sub Premium	MillerCoors
2	3410001505	Miller High Life 6/12B	0.000	\$0.00	\$0.00	Sub Premium	MillerCoors