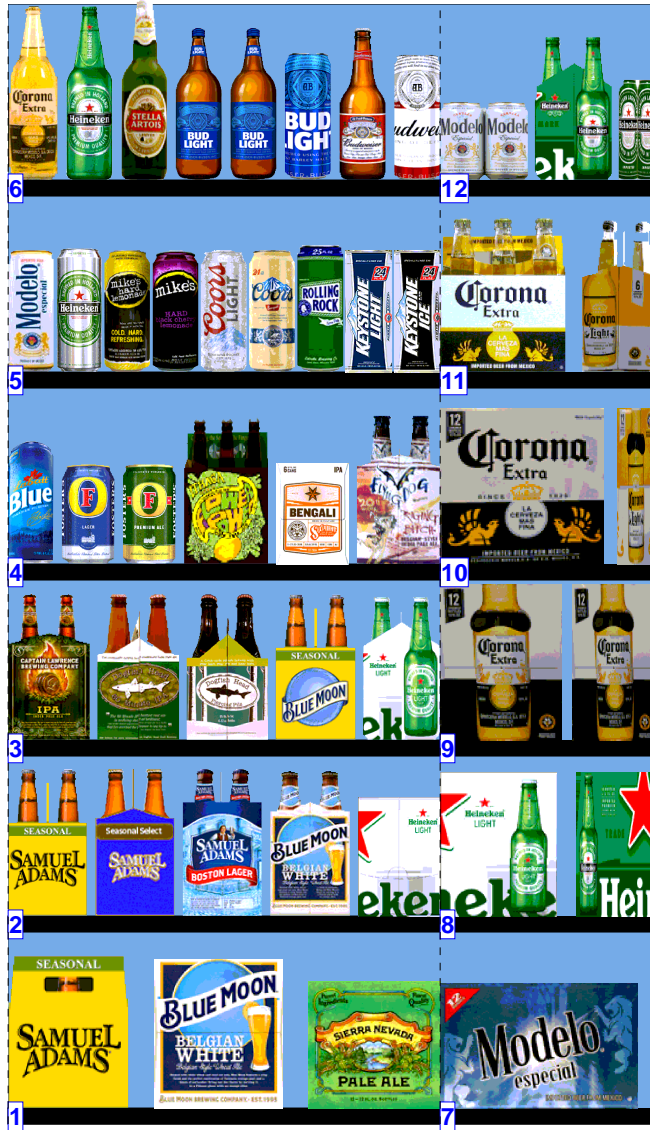




WALGREENS 12871.psa



Store # 12871 H: 5 ft 10.00 in W: 9 ft D: 2 ft 3.00 in # of segments: 4

| 1 | | W:27.00 in | D:36.00 in | Avail Space: 3.23 in | | Ht Space: 11.00 in | |
|------------|------------------------------------|------------|------------|----------------------|-------|--------------------|--|
| UPC | Name | Category | HFacings | Orientation | Units | | |
| 8769201103 | Samuel Adams Seasonal 12/12B | Micro | 1 | Side | 3 | | |
| 7199009516 | Blue Moon Belgian White Ale 12/12B | Specialty | 1 | Side | 3 | | |
| 8378337512 | Sierra Nevada Pale Ale 12/12B | Micro | 1 | Side | 3 | | |

| 2 | | W:27.00 in | D:36.00 in | Avail Space: 2.03 in | | Ht Space: 10.00 in | |
|------------|------------------------------------|------------|------------|----------------------|-------|--------------------|--|
| UPC | Name | Category | HFacings | Orientation | Units | | |
| 8769230050 | Samuel Adams Seasonal 6/12B | Micro | 1 | Side | 4 | | |
| 8769200004 | Samuel Adams Seasonal Select 6/... | Micro | 1 | Side | 4 | | |
| 8769210012 | Samuel Adams Boston Lgr 6/12B | Micro | 1 | Side | 4 | | |
| 7199009511 | Blue Moon Belgian White Ale 6/12B | Specialty | 1 | Side | 4 | | |
| 7289000188 | Heineken Premium Light 12/12C | Imports | 1 | Side | 3 | | |

| 3 | | W:27.00 in | D:36.00 in | Avail Space: 1.84 in | | Ht Space: 10.00 in | |
|-------------|----------------------------------|------------|------------|----------------------|-------|--------------------|--|
| UPC | Name | Category | HFacings | Orientation | Units | | |
| 81760601020 | Captain Lawrence IPA 6/12B | Micro | 1 | Side | 4 | | |
| 63848900029 | Dogfish Head 60 Minute IPA 6/12B | Micro | 1 | Side | 4 | | |
| 63848900110 | Dogfish Head Seasonal 4/12B | Micro | 1 | Side | 7 | | |
| 7199009532 | Blue Moon Seasonal 6/12B | Specialty | 1 | Side | 4 | | |
| 7289000158 | Heineken Premium Light 6/12B | Imports | 1 | Side | 4 | | |

| 4 | | W:27.00 in | D:27.00 in | Avail Space: 2.59 in | | Ht Space: 11.00 in | |
|-------------|---------------------------------------|------------|------------|----------------------|-------|--------------------|--|
| UPC | Name | Category | HFacings | Orientation | Units | | |
| 6206705162 | Labatt Blue 1/24C | Imports | 1 | Front | 9 | | |
| 7089701331 | Fosters Lager 1/25C | Imports | 1 | Front | 8 | | |
| 7089718331 | Fosters Premium Ale 1/25C | Imports | 1 | Front | 8 | | |
| 60690500830 | Ithaca Flower Power IPA 6/12B | Micro | 1 | Side | 3 | | |
| 85909300243 | SixPoint Bengali 6/12C | Micro | 1 | Side | 3 | | |
| 78624311990 | Flying Dog Raging Btch Belgn Ale 6... | Micro | 1 | Side | 3 | | |

| 5 | | W:27.00 in | D:36.00 in | Avail Space: 1.15 in | | Ht Space: 11.00 in | |
|-------------|------------------------------------|-------------|------------|----------------------|-------|--------------------|--|
| UPC | Name | Category | HFacings | Orientation | Units | | |
| 8066095721 | Modelo 1/24C | Imports | 1 | Front | 12 | | |
| 7289000119 | Heineken 1/24C | Imports | 1 | Front | 12 | | |
| 63598525882 | Mikes Hard Lemonade 1/23.5C | FMB | 1 | Front | 12 | | |
| 63598525884 | Mikes Hard Black Cherry Lemonad... | FMB | 1 | Front | 12 | | |
| 7199030065 | Coors Light 1/24C | Premium | 1 | Front | 12 | | |
| 7199010071 | Coors 1/24C | Premium | 1 | Front | 12 | | |
| 7143900601 | Rolling Rock 1/25C | Sub Premium | 1 | Front | 12 | | |
| 7199048024 | Keystone Light 1/24C | Sub Premium | 1 | Front | 12 | | |
| 7199047712 | Keystone Ice 1/24C | Sub Premium | 1 | Front | 12 | | |

| 6 | | W:27.00 in | D:36.00 in | Avail Space: 3.75 in | | Ht Space: 11.00 in | |
|-------------|---------------------|------------|------------|----------------------|-------|--------------------|--|
| UPC | Name | Category | HFacings | Orientation | Units | | |
| 8066095641 | Corona Extra 1/24B | Imports | 1 | Front | 11 | | |
| 7289000478 | Heineken 1/22B | Imports | 1 | Front | 12 | | |
| 78615000057 | Stella Artois 1/22B | Imports | 1 | Front | 12 | | |
| 1820000456 | Bud Light 1/18B | Premium | 2 | Front | 24 | | |
| 1820025001 | Bud Light 1/25C | Premium | 1 | Front | 12 | | |
| 1820000455 | Budweiser 1/18B | Premium | 1 | Front | 12 | | |
| 1820025000 | Budweiser 1/25C | Premium | 1 | Front | 12 | | |

WALGREENS 12871.psa



Store # 12871 H: 5 ft 10.00 in W: 9 ft D: 2 ft 3.00 in # of segments: 4

| 7 | W:27.00 in | D:36.00 in | Avail Space: 2.28 in | | Ht Space: 11.00 in | |
|------------|---------------|------------|----------------------|-------------|--------------------|---|
| UPC | Name | Category | HFacings | Orientation | Units | |
| 8066095757 | Modelo 12/12B | Imports | 2 | Front | | 8 |

| 8 | W:27.00 in | D:36.00 in | Avail Space: 2.59 in | | Ht Space: 10.00 in | |
|------------|-------------------------------|------------|----------------------|-------------|--------------------|---|
| UPC | Name | Category | HFacings | Orientation | Units | |
| 7289000159 | Heineken Premium Light 12/12B | Imports | 1 | Side | | 3 |
| 7289000016 | Heineken 12/12B | Imports | 1 | Front | | 4 |
| 7289000016 | Heineken 12/12B | Imports | 1 | Side | | 3 |

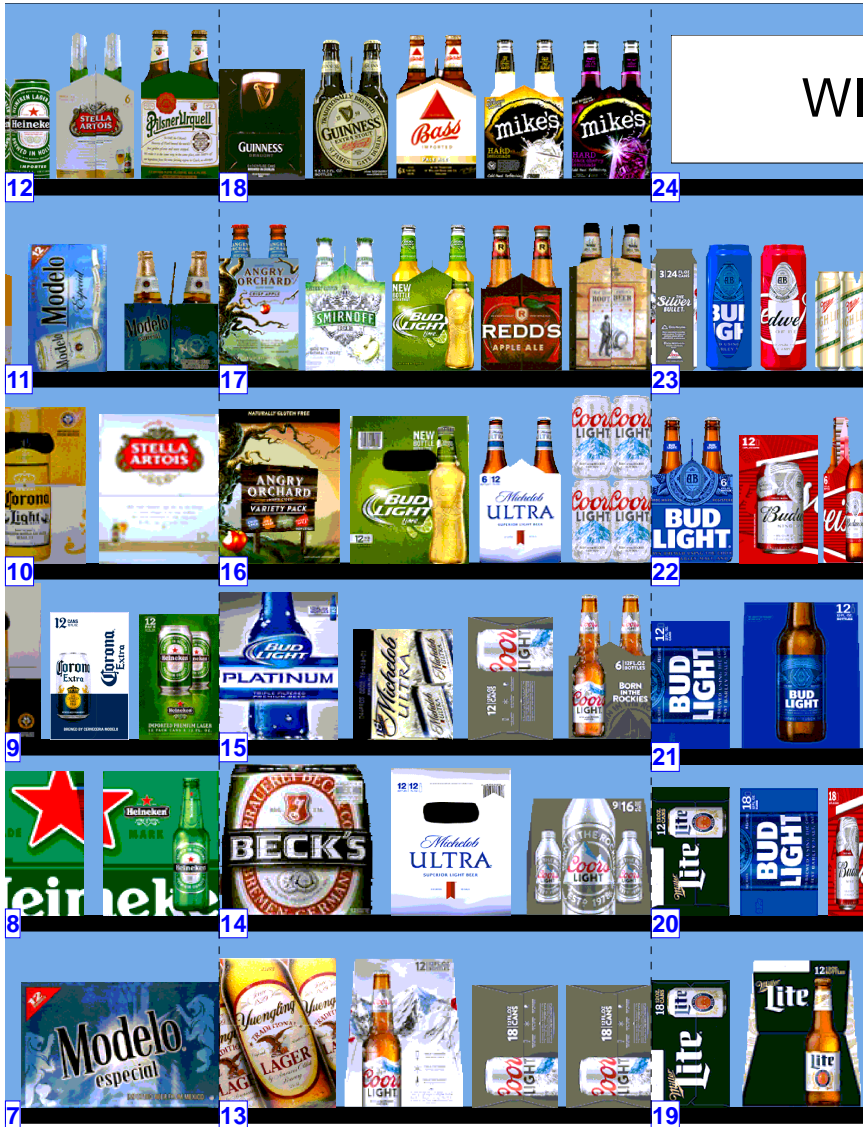
| 9 | W:27.00 in | D:36.00 in | Avail Space: 1.92 in | | Ht Space: 10.00 in | |
|------------|---------------------|------------|----------------------|-------------|--------------------|---|
| UPC | Name | Category | HFacings | Orientation | Units | |
| 8066095615 | Corona Extra 12/12B | Imports | 2 | Side | | 6 |
| 8066095695 | Corona Extra 12/12C | Imports | 1 | Side | | 3 |
| 7289000020 | Heineken 12/12C | Imports | 1 | Side | | 3 |

| 10 | W:27.00 in | D:36.00 in | Avail Space: 1.70 in | | Ht Space: 11.00 in | |
|------------|----------------------|------------|----------------------|-------------|--------------------|---|
| UPC | Name | Category | HFacings | Orientation | Units | |
| 8066095615 | Corona Extra 12/12B | Imports | 1 | Front | | 4 |
| 8066095675 | Corona Light 12/12B | Imports | 1 | Side | | 3 |
| 7861500014 | Stella Artois 12/11B | Imports | 1 | Side | | 3 |

| 11 | W:27.00 in | D:36.00 in | Avail Space: 3.14 in | | Ht Space: 11.00 in | |
|------------|--------------------|------------|----------------------|-------------|--------------------|---|
| UPC | Name | Category | HFacings | Orientation | Units | |
| 8066095605 | Corona Extra 6/12B | Imports | 1 | Front | | 6 |
| 8066095625 | Corona Light 6/12B | Imports | 1 | Side | | 4 |
| 8066095715 | Modelo 12/12C | Imports | 1 | Side | | 3 |
| 8066095765 | Modelo 6/12B | Imports | 1 | Side | | 4 |

| 12 | W:27.00 in | D:36.00 in | Avail Space: 1.67 in | | Ht Space: 11.00 in | |
|-------------|-----------------------|------------|----------------------|-------------|--------------------|---|
| UPC | Name | Category | HFacings | Orientation | Units | |
| 8066095755 | Modelo 6/12C | Imports | 1 | Side | | 4 |
| 7289000011 | Heineken 6/12B | Imports | 1 | Side | | 4 |
| 7289000083 | Heineken 4/16C | Imports | 1 | Front | | 6 |
| 78615000001 | Stella Artois 6/11B | Imports | 1 | Side | | 4 |
| 7231163001 | Pilsner Urquell 6/12B | Imports | 1 | Side | | 5 |

WALGREENS 12871.psa



Store # 12871 H: 5 ft 10.00 in W: 9 ft D: 2 ft 3.00 in # of segments: 4

| 13 | | W:27.00 in | D:36.00 in | Avail Space: 1.77 in | Ht Space: 11.00 in | |
|------------|------------------------------------|------------|------------|----------------------|--------------------|--|
| UPC | Name | Category | HFacings | Orientation | Units | |
| 8992427896 | Yuengling Traditional Lager 12/12B | Premium | 1 | Side | 3 | |
| 7199030069 | Coors Light 12/12B | Premium | 1 | Side | 3 | |
| 7199030017 | Coors Light 18/12C | Premium | 2 | Side | 4 | |

| 14 | | W:27.00 in | D:36.00 in | Avail Space: 2.05 in | Ht Space: 10.00 in | |
|------------|-----------------------|------------|------------|----------------------|--------------------|--|
| UPC | Name | Category | HFacings | Orientation | Units | |
| 8248812300 | Becks 12/12B | Imports | 1 | Front | 4 | |
| 1820005990 | Michelob Ultra 12/12B | Specialty | 1 | Side | 3 | |
| 7199030104 | Coors Light 9/16AL | Premium | 1 | Front | 4 | |

| 15 | | W:27.00 in | D:36.00 in | Avail Space: 2.97 in | Ht Space: 10.00 in | |
|------------|---------------------------|------------|------------|----------------------|--------------------|--|
| UPC | Name | Category | HFacings | Orientation | Units | |
| 1820018992 | Bud Light Platinum 12/12B | Specialty | 1 | Side | 3 | |
| 1820096721 | Michelob Ultra 18/12C SC | Specialty | 1 | Side | 2 | |
| 7199000048 | Coors Light 12/12C | Premium | 1 | Side | 3 | |
| 7199030005 | Coors Light 6/12B | Premium | 1 | Side | 4 | |

| 16 | | W:27.00 in | D:36.00 in | Avail Space: 2.02 in | Ht Space: 11.00 in | |
|------------|-----------------------------------|------------|------------|----------------------|--------------------|--|
| UPC | Name | Category | HFacings | Orientation | Units | |
| 8769200017 | Angry Orchard Variety Pack 12/12B | Cider | 1 | Side | 3 | |
| 1820014990 | Bud Light Lime 12/12B | Specialty | 1 | Side | 3 | |
| 1820005989 | Michelob Ultra 6/12B | Specialty | 1 | Side | 4 | |
| 7199000008 | Coors Light 6/12C | Premium | 1 | Side | 8 | |

| 17 | | W:27.00 in | D:36.00 in | Avail Space: 1.73 in | Ht Space: 11.00 in | |
|------------|--------------------------------------|------------|------------|----------------------|--------------------|--|
| UPC | Name | Category | HFacings | Orientation | Units | |
| 8769282102 | Angry Orchard Crisp Apple 6/12B | Cider | 1 | Side | 4 | |
| 8200072751 | Smirnoff Ice Green Apple 6/11B | FMB | 1 | Side | 4 | |
| 1820014991 | Bud Light Lime 6/12B | Specialty | 1 | Side | 4 | |
| 3410008716 | Redd's Apple Ale 6/12B | Specialty | 1 | Side | 4 | |
| 9200002000 | Small Town Not Your Fathers RtBr ... | Micro | 1 | Side | 4 | |

| 18 | | W:27.00 in | D:36.00 in | Avail Space: 2.00 in | Ht Space: 11.00 in | |
|-------------|------------------------------------|------------|------------|----------------------|--------------------|--|
| UPC | Name | Category | HFacings | Orientation | Units | |
| 8382012368 | Guinness Draught 8/15C | Imports | 1 | Side | 3 | |
| 8382012393 | Guinness Extra Stout 6/11B | Imports | 1 | Side | 5 | |
| 76227407131 | Bass Pale Ale 6/12B | Imports | 1 | Side | 4 | |
| 63598510062 | Mikes Hard Lemonade 6/11B | FMB | 1 | Side | 4 | |
| 63598506744 | Mikes Hard Black Cherry Lemonad... | FMB | 1 | Side | 4 | |



Store # 12871 H: 5 ft 10.00 in W: 9 ft D: 2 ft 3.00 in # of segments: 4

| 19 | | W:27.00 in | D:36.00 in | Avail Space: 2.31 in | | Ht Space: 11.00 in | |
|------------|-------------------------|-------------|------------|----------------------|-------|--------------------|--|
| UPC | Name | Category | HFacings | Orientation | Units | | |
| 3410057340 | Miller Lite 18/12C | Premium | 1 | Side | 2 | | |
| 3410057509 | Miller Lite 12/12B | Premium | 1 | Side | 3 | | |
| 3410001509 | Miller High Life 12/12B | Sub Premium | 1 | Side | 3 | | |
| 3410001636 | Miller High Life 12/12C | Sub Premium | 1 | Side | 3 | | |

| 20 | | W:27.00 in | D:36.00 in | Avail Space: 2.59 in | | Ht Space: 9.40 in | |
|------------|----------------------|-------------|------------|----------------------|-------|-------------------|--|
| UPC | Name | Category | HFacings | Orientation | Units | | |
| 3410057636 | Miller Lite 12/12C | Premium | 1 | Side | 3 | | |
| 1820053218 | Bud Light 18/12C | Premium | 1 | Side | 2 | | |
| 1820011218 | Budweiser 18/12C | Premium | 1 | Side | 2 | | |
| 1820015047 | Natural Light 12/12C | Sub Premium | 1 | Side | 3 | | |
| 1820000964 | Natural Ice 12/12C | Sub Premium | 1 | Side | 3 | | |

| 21 | | W:27.00 in | D:36.00 in | Avail Space: 2.32 in | | Ht Space: 10.60 in | |
|------------|------------------|-------------|------------|----------------------|-------|--------------------|--|
| UPC | Name | Category | HFacings | Orientation | Units | | |
| 1820053047 | Bud Light 12/12C | Premium | 1 | Side | 3 | | |
| 1820000769 | Bud Light 12/12B | Premium | 1 | Side | 3 | | |
| 1820000771 | Budweiser 12/12B | Premium | 1 | Side | 3 | | |
| 2210000170 | Pabst 12/12C | Sub Premium | 1 | Side | 3 | | |

| 22 | | W:27.00 in | D:36.00 in | Avail Space: 1.59 in | | Ht Space: 11.00 in | |
|------------|------------------|-------------|------------|----------------------|-------|--------------------|--|
| UPC | Name | Category | HFacings | Orientation | Units | | |
| 1820000833 | Bud Light 6/12B | Premium | 1 | Side | 4 | | |
| 1820011047 | Budweiser 12/12C | Premium | 1 | Side | 3 | | |
| 1820000834 | Budweiser 6/12B | Premium | 1 | Side | 4 | | |
| 1820000016 | Budweiser 6/12C | Premium | 1 | Side | 8 | | |
| 1820000784 | O'Doul's 6/12B | Non Alcohol | 1 | Side | 4 | | |

| 23 | | W:27.00 in | D:36.00 in | Avail Space: 2.75 in | | Ht Space: 11.00 in | |
|------------|------------------------|-------------|------------|----------------------|-------|--------------------|--|
| UPC | Name | Category | HFacings | Orientation | Units | | |
| 7199030120 | Coors Light 3/24C | Premium | 1 | Side | 4 | | |
| 1820021986 | Bud Light 3/25C | Premium | 1 | Side | 4 | | |
| 1820021985 | Budweiser 3/25C | Premium | 1 | Side | 4 | | |
| 3410000007 | Miller High Life 6/16C | Sub Premium | 1 | Side | 4 | | |
| 7199048008 | Keystone Light 6/16C | Sub Premium | 1 | Side | 4 | | |
| 3410000882 | Icehouse 6/16C | Sub Premium | 1 | Side | 4 | | |

| 24 | | W:27.00 in | D:36.00 in | Avail Space: 27.00 in | | Ht Space: 11.00 in | |
|----|--|------------|------------|-----------------------|--|--------------------|--|
|----|--|------------|------------|-----------------------|--|--------------------|--|