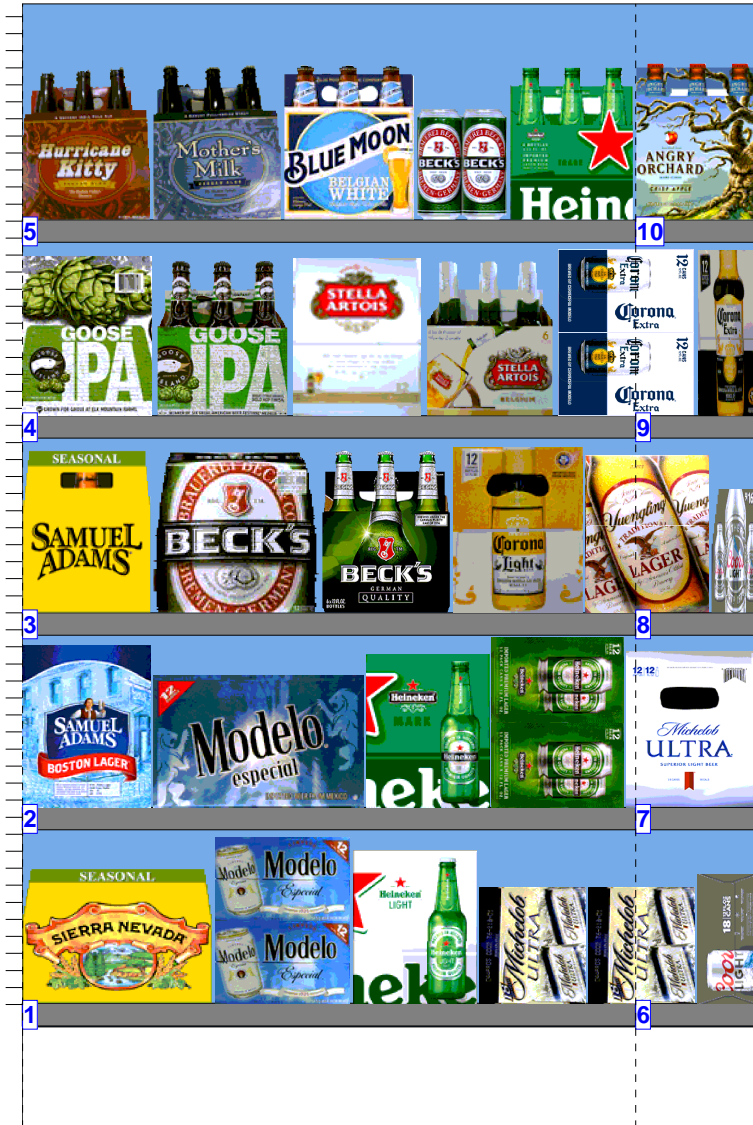


# WALGREENS 2077 WARM.psa



# WALGREENS 2077 WARM.psa



Store # 2077 H: 5 ft 6.00 in W: 6 ft D: 1 ft 10.00 in # of segments: 2

| 1          | W:36.00 in                    | D:22.00 in | Avail Space: -2.62 in |             | Ht Space: 10.18 in |  |
|------------|-------------------------------|------------|-----------------------|-------------|--------------------|--|
| UPC        | Name                          | Category   | HFacings              | Orientation | Units              |  |
| 8378322812 | Sierra Nevada Seasonal 12/12B | Micro      | 1                     | Front       | 2                  |  |
| 8066095715 | Modelo 12/12C                 | Imports    | 1                     | Side 90     | 4                  |  |
| 7289000159 | Heineken Premium Light 12/12B | Imports    | 1                     | Side        | 2                  |  |
| 1820096721 | Michelob Ultra 18/12C SC      | Specialty  | 2                     | Side        | 2                  |  |

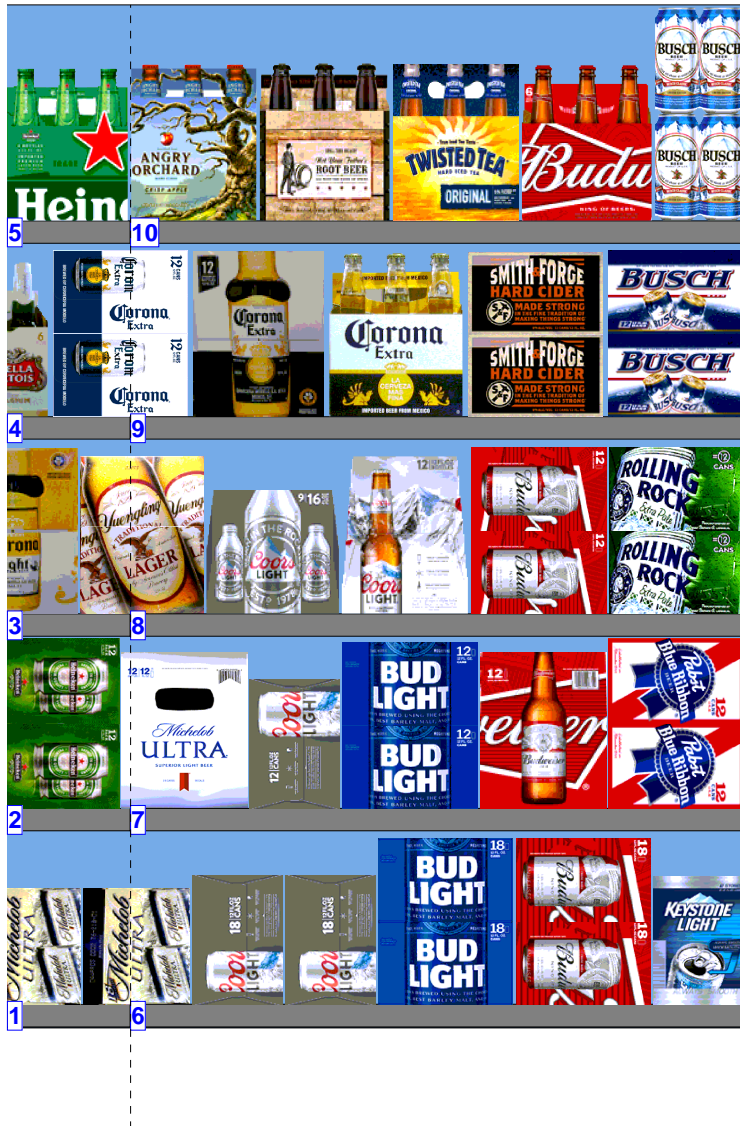
| 2          | W:36.00 in                     | D:22.00 in | Avail Space: 1.14 in |             | Ht Space: 10.11 in |  |
|------------|--------------------------------|------------|----------------------|-------------|--------------------|--|
| UPC        | Name                           | Category   | HFacings             | Orientation | Units              |  |
| 8769210014 | Samuel Adams Boston Lgr 12/12B | Micro      | 1                    | Side        | 2                  |  |
| 8066095757 | Modelo 12/12B                  | Imports    | 1                    | Front       | 2                  |  |
| 7289000016 | Heineken 12/12B                | Imports    | 1                    | Side        | 2                  |  |
| 7289000020 | Heineken 12/12C                | Imports    | 1                    | Side 90     | 4                  |  |

| 3          | W:36.00 in                   | D:22.00 in | Avail Space: 3.62 in |             | Ht Space: 10.25 in |  |
|------------|------------------------------|------------|----------------------|-------------|--------------------|--|
| UPC        | Name                         | Category   | HFacings             | Orientation | Units              |  |
| 8769201103 | Samuel Adams Seasonal 12/12B | Micro      | 1                    | Side        | 2                  |  |
| 8248812300 | Becks 12/12B                 | Imports    | 1                    | Front       | 3                  |  |
| 8248812345 | Becks 6/12B                  | Imports    | 1                    | Front       | 4                  |  |
| 8066095675 | Corona Light 12/12B          | Imports    | 1                    | Side        | 2                  |  |

| 4           | W:36.00 in                         | D:22.00 in | Avail Space: -1.96 in |             | Ht Space: 10.18 in |  |
|-------------|------------------------------------|------------|-----------------------|-------------|--------------------|--|
| UPC         | Name                               | Category   | HFacings              | Orientation | Units              |  |
| 73692011180 | Goose Island India Pale Ale 12/12B | Micro      | 1                     | Side        | 2                  |  |
| 73692011132 | Goose Island India Pale Ale 6/12B  | Micro      | 1                     | Front       | 4                  |  |
| 78615000014 | Stella Artois 12/11B               | Imports    | 1                     | Side        | 2                  |  |
| 78615000001 | Stella Artois 6/11B                | Imports    | 1                     | Front       | 4                  |  |
| 8066095695  | Corona Extra 12/12C                | Imports    | 1                     | Side 90     | 4                  |  |

| 5           | W:36.00 in                        | D:22.00 in | Avail Space: 0.90 in |             | Ht Space: 12.68 in |  |
|-------------|-----------------------------------|------------|----------------------|-------------|--------------------|--|
| UPC         | Name                              | Category   | HFacings             | Orientation | Units              |  |
| 89968800021 | Keegan Ales Hurricane Kitty 6/12B | Micro      | 1                    | Front       | 4                  |  |
| 89968800031 | Keegan Ales Mothers Milk 6/12B    | Micro      | 1                    | Front       | 4                  |  |
| 7199009511  | Blue Moon Belgian White Ale 6/12B | Specialty  | 1                    | Front       | 4                  |  |
| 8248812377  | Becks 4/16C                       | Imports    | 1                    | Front       | 4                  |  |
| 7289000011  | Heineken 6/12B                    | Imports    | 1                    | Front       | 4                  |  |

# WALGREENS 2077 WARM.psa



Store # 2077 H: 5 ft 6.00 in W: 6 ft D: 1 ft 10.00 in # of segments: 2

| 6          |                       | W:36.00 in  | D:22.00 in | Avail Space: 4.42 in |       | Ht Space: 10.18 in |  |
|------------|-----------------------|-------------|------------|----------------------|-------|--------------------|--|
| UPC        | Name                  | Category    | HFacings   | Orientation          | Units |                    |  |
| 7199030017 | Coors Light 18/12C    | Premium     | 2          | Side                 | 2     |                    |  |
| 1820053218 | Bud Light 18/12C      | Premium     | 1          | Side 90              | 2     |                    |  |
| 1820011218 | Budweiser 18/12C      | Premium     | 1          | Side 90              | 2     |                    |  |
| 7199048004 | Keystone Light 12/12C | Sub Premium | 1          | Side                 | 2     |                    |  |

| 7          |                       | W:36.00 in  | D:22.00 in | Avail Space: 0.03 in |       | Ht Space: 10.11 in |  |
|------------|-----------------------|-------------|------------|----------------------|-------|--------------------|--|
| UPC        | Name                  | Category    | HFacings   | Orientation          | Units |                    |  |
| 1820005990 | Michelob Ultra 12/12B | Specialty   | 1          | Side                 | 2     |                    |  |
| 7199000048 | Coors Light 12/12C    | Premium     | 1          | Side                 | 2     |                    |  |
| 1820053047 | Bud Light 12/12C      | Premium     | 1          | Side 90              | 4     |                    |  |
| 1820000771 | Budweiser 12/12B      | Premium     | 1          | Side                 | 2     |                    |  |
| 2210000170 | Pabst 12/12C          | Sub Premium | 1          | Side 90              | 4     |                    |  |

| 8          |                                    | W:36.00 in  | D:22.00 in | Avail Space: -2.30 in |       | Ht Space: 10.25 in |  |
|------------|------------------------------------|-------------|------------|-----------------------|-------|--------------------|--|
| UPC        | Name                               | Category    | HFacings   | Orientation           | Units |                    |  |
| 8992427896 | Yuengling Traditional Lager 12/12B | Premium     | 1          | Side                  | 2     |                    |  |
| 7199030104 | Coors Light 9/16AL                 | Premium     | 1          | Front                 | 2     |                    |  |
| 7199030069 | Coors Light 12/12B                 | Premium     | 1          | Side                  | 2     |                    |  |
| 1820011047 | Budweiser 12/12C                   | Premium     | 1          | Side 90               | 4     |                    |  |
| 7143934450 | Rolling Rock 12/12C                | Sub Premium | 1          | Side 90               | 4     |                    |  |

| 9          |                                 | W:36.00 in  | D:22.00 in | Avail Space: 4.76 in |       | Ht Space: 10.18 in |  |
|------------|---------------------------------|-------------|------------|----------------------|-------|--------------------|--|
| UPC        | Name                            | Category    | HFacings   | Orientation          | Units |                    |  |
| 8066095615 | Corona Extra 12/12B             | Imports     | 1          | Side                 | 2     |                    |  |
| 8066095605 | Corona Extra 6/12B              | Imports     | 1          | Front                | 4     |                    |  |
| 7199009687 | Smith & Forge Hard Cider 12/12C | Cider       | 1          | Side 90              | 4     |                    |  |
| 1820061047 | Busch 12/12C                    | Sub Premium | 1          | Side 90              | 4     |                    |  |

| 10         |                                      | W:36.00 in  | D:22.00 in | Avail Space: 0.80 in |       | Ht Space: 12.68 in |  |
|------------|--------------------------------------|-------------|------------|----------------------|-------|--------------------|--|
| UPC        | Name                                 | Category    | HFacings   | Orientation          | Units |                    |  |
| 8769282102 | Angry Orchard Crisp Apple 6/12B      | Cider       | 1          | Front                | 4     |                    |  |
| 9200002000 | Small Town Not Your Fathers RTBr ... | Micro       | 1          | Front                | 4     |                    |  |
| 8769283102 | Twisted Tea 6/12B                    | FMB         | 1          | Front                | 4     |                    |  |
| 1820000834 | Budweiser 6/12B                      | Premium     | 1          | Front                | 4     |                    |  |
| 1820000063 | Busch 6/16C                          | Sub Premium | 1          | Side                 | 4     |                    |  |