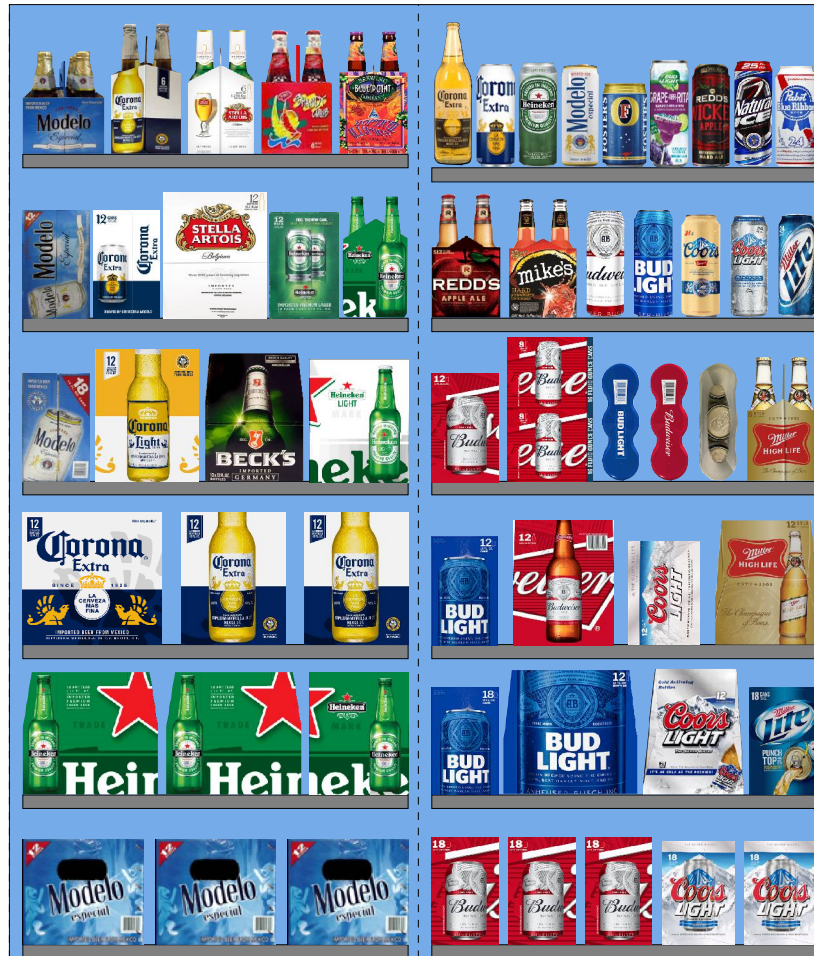


3457.psa For Validation Purposes Only NOT FINAL



Printed: 4/14/2016

Traffic Flow Left-right

POG: 3457.psa



POG Size: 5'0.00

Segments 1 - 2 of 2

Page: 1

## SCHEMATIC BACKING REPORT

3457.psa

### Planogram: 3457.psa

Segment #1 : Shelf #6 DEPTH: 36 in WIDTH: 28 in DISTANCE FROM TOP OF BASE SHELF TO BOTTOM OF SHELF: 0.00 in									
POS #	FAC	UPC	ID	NAME	CASES	CAPACITY	UNITS HIGH	DOS	MVMT
17	3	8066095757	8066095757	Modelo 12/12B	3.0	6	1	2.2	19.3
Segment #1 : Shelf #5 DEPTH: 36 in WIDTH: 28 in DISTANCE FROM TOP OF BASE SHELF TO BOTTOM OF SHELF: 11.00 in									
POS #	FAC	UPC	ID	NAME	CASES	CAPACITY	UNITS HIGH	DOS	MVMT
16	2	7289000016	7289000016	Heineken 12/12B	5.0	10	1	0.9	77.0
Segment #1 : Shelf #4 DEPTH: 36 in WIDTH: 28 in DISTANCE FROM TOP OF BASE SHELF TO BOTTOM OF SHELF: 22.00 in									
POS #	FAC	UPC	ID	NAME	CASES	CAPACITY	UNITS HIGH	DOS	MVMT
15	1	8066095615	8066095615	Corona Extra 12/12B	4.0	8	1	0.3	203.9
Segment #1 : Shelf #3 DEPTH: 36 in WIDTH: 28 in DISTANCE FROM TOP OF BASE SHELF TO BOTTOM OF SHELF: 34.00 in									
POS #	FAC	UPC	ID	NAME	CASES	CAPACITY	UNITS HIGH	DOS	MVMT
11	1	8066095711	8066095711	Modelo 18/12C	2.0	2	1	2.6	5.5
12	1	8066095675	8066095675	Corona Light 12/12B	1.5	3	1	25.7	0.8
13	1	8248812300	8248812300	Becks 12/12B	1.5	3	1	1.6	13.1
14	1	7289000159	7289000159	Heineken Premium Light 12/12B	1.5	3	1	6.0	3.5
Segment #1 : Shelf #2 DEPTH: 36 in WIDTH: 28 in DISTANCE FROM TOP OF BASE SHELF TO BOTTOM OF SHELF: 46.00 in									
POS #	FAC	UPC	ID	NAME	CASES	CAPACITY	UNITS HIGH	DOS	MVMT
6	1	8066095715	8066095715	Modelo 12/12C	1.5	3	1	2.5	8.4
7	1	8066095695	8066095695	Corona Extra 12/12C	1.5	3	1	3.0	7.0
8	1	78615000014	78615000014	Stella Artois 12/11B	1.5	3	1	5.6	3.8
9	1	7289000020	7289000020	Heineken 12/12C	1.5	3	1	3.1	6.8
10	1	7289000011	7289000011	Heineken 6/12B	1.0	4	1	5.3	5.3
Segment #1 : Shelf #1 DEPTH: 36 in WIDTH: 28 in DISTANCE FROM TOP OF BASE SHELF TO BOTTOM OF SHELF: 58.00 in									
POS #	FAC	UPC	ID	NAME	CASES	CAPACITY	UNITS HIGH	DOS	MVMT
1	1	8066095765	8066095765	Modelo 6/12B	1.0	4	1	0.0	0.0
2	1	8066095605	8066095605	Corona Extra 6/12B	1.0	4	1	7.4	3.8
3	1	78615000001	78615000001	Stella Artois 6/11B	1.0	4	1	7.1	3.9
4	1	79871322008	79871322008	Carib Shandy Sorrell 6/12B	1.0	4	1	17.3	1.6
5	1	68174511102	68174511102	Blue Point Hoptical Illusion 6/12B	1.0	4	1	0.0	0.0
Segment #2 : Shelf #6 DEPTH: 36 in WIDTH: 28 in DISTANCE FROM TOP OF BASE SHELF TO BOTTOM OF SHELF: 0.00 in									
POS #	FAC	UPC	ID	NAME	CASES	CAPACITY	UNITS HIGH	DOS	MVMT
48	3	1820011218	1820011218	Budweiser 18/12C	6.0	6	1	2.2	18.8
49	2	7199030017	7199030017	Coors Light 18/12C	4.0	4	1	2.2	12.6
Segment #2 : Shelf #5 DEPTH: 36 in WIDTH: 28 in DISTANCE FROM TOP OF BASE SHELF TO BOTTOM OF SHELF: 11.00 in									
POS #	FAC	UPC	ID	NAME	CASES	CAPACITY	UNITS HIGH	DOS	MVMT
44	1	1820053218	1820053218	Bud Light 18/12C	2.0	2	1	12.3	1.1
45	1	1820000769	1820000769	Bud Light 12/12B	2.0	4	1	5.5	5.1
46	1	7199030069	7199030069	Coors Light 12/12B	1.5	3	1	4.1	5.1

## SCHEMATIC BACKING REPORT

3457.psa

47    1    3410057340    3410057340    Miller Lite 18/12C    2.0    2    1    5.5    2.5

Segment #2 : Shelf #4    DEPTH: 36 in    WIDTH: 28 in    DISTANCE FROM TOP OF BASE SHELF TO BOTTOM OF SHELF: 22.00 in

POS	# FAC	UPC	ID	NAME	CASES	CAPACITY	UNITS HIGH	DOS	MVMT
40	1	1820053047	1820053047	Bud Light 12/12C	1.5	3	1	54.0	0.4
41	1	1820000771	1820000771	Budweiser 12/12B	1.5	3	1	8.8	2.4
42	1	7199000048	7199000048	Coors Light 12/12C	1.5	3	1	1.8	11.4
43	1	3410001509	3410001509	Miller High Life 12/12B	1.5	3	1	5.5	3.8

Segment #2 : Shelf #3    DEPTH: 36 in    WIDTH: 28 in    DISTANCE FROM TOP OF BASE SHELF TO BOTTOM OF SHELF: 34.00 in

POS	# FAC	UPC	ID	NAME	CASES	CAPACITY	UNITS HIGH	DOS	MVMT
34	1	1820011047	1820011047	Budweiser 12/12C	1.5	3	1	2.4	8.8
35	1	1820008981	1820008981	Budweiser 8/16C	2.0	6	2	0.0	0.0
36	1	1820021986	1820021986	Bud Light 3/25C	0.8	4	1	0.0	0.0
37	1	1820021985	1820021985	Budweiser 3/25C	0.8	4	1	0.0	0.0
38	1	7199030120	7199030120	Coors Light 3/24C	0.8	4	1	0.0	0.0
39	1	3410001505	3410001505	Miller High Life 6/12B	1.0	4	1	0.0	0.0

Segment #2 : Shelf #2    DEPTH: 36 in    WIDTH: 28 in    DISTANCE FROM TOP OF BASE SHELF TO BOTTOM OF SHELF: 46.00 in

POS	# FAC	UPC	ID	NAME	CASES	CAPACITY	UNITS HIGH	DOS	MVMT
27	1	3410008716	3410008716	Redd's Apple Ale 6/12B	1.0	4	1	28.0	1.0
28	1	63598522413	63598522413	Mikes Hard Strawberry Lemonade 6/11B	1.0	4	1	20.0	1.4
29	1	1820025000	1820025000	Budweiser 1/25C	0.8	12	1	2.2	37.8
30	1	1820025001	1820025001	Bud Light 1/25C	0.8	12	1	6.5	12.9
31	1	7199010071	7199010071	Coors 1/24C	1.0	12	1	5.7	14.8
32	1	7199030065	7199030065	Coors Light 1/24C	1.0	12	1	6.7	12.5
33	1	3410000355	3410000355	Miller Lite 1/24C	1.0	12	1	0.0	0.0

Segment #2 : Shelf #1    DEPTH: 36 in    WIDTH: 28 in    DISTANCE FROM TOP OF BASE SHELF TO BOTTOM OF SHELF: 57.00 in

POS	# FAC	UPC	ID	NAME	CASES	CAPACITY	UNITS HIGH	DOS	MVMT
18	1	8066095641	8066095641	Corona Extra 1/24B	0.9	11	1	9.0	8.6
19	1	8066095643	8066095643	Corona Extra 1/24C	1.0	12	1	0.0	0.0
20	1	7289000119	7289000119	Heineken 1/24C	1.0	12	1	6.1	13.7
21	1	8066095721	8066095721	Modelo 1/24C	1.0	12	1	0.0	0.0
22	1	7089701331	7089701331	Fosters Lager 1/25C	0.8	10	1	11.2	6.2
23	1	1820025833	1820025833	Bud Light Lime Grape-A-Rita 1/25C	0.8	12	1	0.0	0.0
24	1	3410000323	3410000323	Redd's Wicked Apple 1/24C	1.0	12	1	0.0	0.0
25	1	1820025008	1820025008	Natural Ice 1/25C	0.8	12	1	0.0	0.0
26	1	2210000004	2210000004	Pabst 1/24C	1.0	12	1	0.0	0.0

SKUs on Planogram: 49

**UNALLOCATED ITEMS/OPTIONAL ITEMS**

3457.psa

**UNALLOCATED SKU REPORT**

	<b>UPC</b>	<b>NAME</b>	<b>MVMT</b>	<b>Profit</b>	<b>Sales</b>	<b>Category</b>	<b>Manufacturer</b>
1	8982600142	Tecate 1/24C	4.369	\$0.00	\$0.00	Imports	Heineken USA
2	7199009516	Blue Moon Belgian White Ale 12/12B	1.855	\$0.00	\$0.00	Specialty	MillerCoors
3	7289000478	Heineken 1/22B	1.842	\$0.00	\$0.00	Imports	Heineken USA
4	7231163012	Dos Equis Lager 6/12B	1.308	\$0.00	\$0.00	Imports	Heineken USA
5	8200075748	Smirnoff Ice Screwdriver 6/11B	1.231	\$0.00	\$0.00	FMB	Diageo
6	8200072754	Smirnoff Ice Raspberry 6/11B	1.077	\$0.00	\$0.00	FMB	Diageo
7	8200072751	Smirnoff Ice Green Apple 6/11B	0.923	\$0.00	\$0.00	FMB	Diageo
8	8382012393	Guinness Extra Stout 6/11B	0.923	\$0.00	\$0.00	Imports	Diageo
9	1820014990	Bud Light Lime 12/12B	0.917	\$0.00	\$0.00	Specialty	Anheuser-Busch InBev
10	1820015047	Natural Light 12/12C	0.864	\$0.00	\$0.00	Sub Premium	Anheuser-Busch InBev
11	1820018992	Bud Light Platinum 12/12B	0.714	\$0.00	\$0.00	Specialty	Anheuser-Busch InBev
12	63598506074	Mikes Hard Seasonal 6/11B	0.692	\$0.00	\$0.00	FMB	Mark Anthony Brands
13	8769283102	Twisted Tea 6/12B	0.692	\$0.00	\$0.00	FMB	Boston Beer
14	1820000964	Natural Ice 12/12C	0.636	\$0.00	\$0.00	Sub Premium	Anheuser-Busch InBev
15	8200072385	Smirnoff Ice 6/11B	0.615	\$0.00	\$0.00	FMB	Diageo
16	1820097007	Bud Light Lime Lemon-Ade-Rita 12/8C	0.615	\$0.00	\$0.00	FMB	Anheuser-Busch InBev
17	3410008730	Redd's Strawberry Ale 6/12B	0.615	\$0.00	\$0.00	Specialty	MillerCoors
18	7231123012	Dos Equis Lager 12/12B	0.473	\$0.00	\$0.00	Imports	Heineken USA
19	7231163001	Pilsner Urquell 6/12B	0.462	\$0.00	\$0.00	Imports	MillerCoors
20	8382012360	Guinness Draught 4/15C	0.462	\$0.00	\$0.00	Imports	Diageo
21	8982623010	Beers of Mexico 12/12B	0.385	\$0.00	\$0.00	Imports	Heineken USA
22	8066095787	Negra Modelo 12/12B	0.385	\$0.00	\$0.00	Imports	Crown Imports LLC
23	63598510062	Mikes Hard Lemonade 6/11B	0.385	\$0.00	\$0.00	FMB	Mark Anthony Brands
24	3410000340	Redd's Variety Pack 12/12B	0.385	\$0.00	\$0.00	Specialty	MillerCoors
25	8382010401	Guinness Draught 6/11B	0.385	\$0.00	\$0.00	Imports	Diageo
26	8992427896	Yuengling Traditional Lager 12/12B	0.363	\$0.00	\$0.00	Premium	DG Yuengling & Sons
27	63598506744	Mikes Hard Black Cherry Lemonade 6/...	0.308	\$0.00	\$0.00	FMB	Mark Anthony Brands
28	8780000049	Smith & Forge Hard Cider 4/16C	0.308	\$0.00	\$0.00	Cider	MillerCoors
29	3410057636	Miller Lite 12/12C	0.308	\$0.00	\$0.00	Premium	MillerCoors
30	1820005990	Michelob Ultra 12/12B	0.231	\$0.00	\$0.00	Specialty	Anheuser-Busch InBev
31	63598560611	Mikes Hard Cranberry Lemonade 6/11B	0.231	\$0.00	\$0.00	FMB	Mark Anthony Brands
32	8992427891	Yuengling Traditional Lager 6/12B	0.231	\$0.00	\$0.00	Premium	DG Yuengling & Sons
33	8769200017	Angry Orchard Variety Pack 12/12B	0.231	\$0.00	\$0.00	Cider	Boston Beer
34	8374100005	Grolsch 6/12B	0.231	\$0.00	\$0.00	Imports	MillerCoors
35	8982690033	Tecate 12/12C	0.231	\$0.00	\$0.00	Imports	Heineken USA
36	63598525948	Mikes HARDER Blk Cherry Lemonade ...	0.231	\$0.00	\$0.00	FMB	Mark Anthony Brands
37	3410058805	Leinenkugel Heritage Seasonal 6/12B	0.231	\$0.00	\$0.00	Specialty	MillerCoors
38	8200074001	Smirnoff Ice Strawberry Acai 6/11B	0.231	\$0.00	\$0.00	FMB	Diageo
39	1820022988	Bud Light Lime Raz-Ber-Rita 12/8C	0.221	\$0.00	\$0.00	FMB	Anheuser-Busch InBev
40	1820022989	Bud Light Lime Mang-O-Rita 12/8C	0.186	\$0.00	\$0.00	FMB	Anheuser-Busch InBev
41	3410008746	Redd's Green Apple 6/12B	0.154	\$0.00	\$0.00	Specialty	MillerCoors
42	8834510151	Strongbow Gold Hard Cider 6/11B	0.154	\$0.00	\$0.00	Cider	Heineken USA
43	79603011494	Kona Longboard Lager 6/12B	0.154	\$0.00	\$0.00	Micro	Anheuser-Busch InBev
44	8382012368	Guinness Draught 8/15C	0.154	\$0.00	\$0.00	Imports	Diageo
45	18195400002	Peroni Nastro Azzuro 6/12B	0.154	\$0.00	\$0.00	Imports	MillerCoors
46	1820020998	Bud Light 8/16AL	0.150	\$0.00	\$0.00	Premium	Anheuser-Busch InBev
47	7199009536	Blue Moon Seasonal 12/12B	0.115	\$0.00	\$0.00	Specialty	MillerCoors
48	1820022992	Bud Light Lime-A-Rita Seasonal 12/8C	0.103	\$0.00	\$0.00	FMB	Anheuser-Busch InBev
49	1820019987	Bud Light Lime-A-Rita 12/8C	0.086	\$0.00	\$0.00	FMB	Anheuser-Busch InBev
50	3061300001	Brooklyn Lager 6/12B	0.084	\$0.00	\$0.00	Micro	Micro Breweries
51	1820013986	Shock Top Belgian White Ale 6/12B	0.077	\$0.00	\$0.00	Specialty	Anheuser-Busch InBev
52	78615000030	Lefte Blonde 6/11B	0.077	\$0.00	\$0.00	Imports	Anheuser-Busch InBev
53	8248812345	Becks 6/12B	0.077	\$0.00	\$0.00	Imports	Anheuser-Busch InBev
54	1820021979	Budweiser 8/16AL	0.077	\$0.00	\$0.00	Premium	Anheuser-Busch InBev
55	8382007152	Smithwicks Irish Ale 6/12B	0.077	\$0.00	\$0.00	Imports	Diageo
56	78615000036	Hoegaarden 6/11B	0.077	\$0.00	\$0.00	Imports	Anheuser-Busch InBev
57	1820020993	Bud Light Lime Straw-Ber-Rita 12/8C	0.044	\$0.00	\$0.00	FMB	Anheuser-Busch InBev
58	8834510158	Strongbow Honey Apple Cider 6/11B	0.043	\$0.00	\$0.00	Cider	Heineken USA
59	8769282102	Angry Orchard Crisp Apple 6/12B	0.042	\$0.00	\$0.00	Cider	Boston Beer
60	8378337521	Sierra Nevada Pale Ale 6/12B	0.033	\$0.00	\$0.00	Micro	Sierra Nevada
61	7231133140	Dos Equis Ambar 12/12B	0.032	\$0.00	\$0.00	Imports	Heineken USA
62	7289000188	Heineken Premium Light 12/12C	0.008	\$0.00	\$0.00	Imports	Heineken USA
63	89521600201	Moskato Life Original 1/24B	0.004	\$0.00	\$0.00	FMB	Micro Breweries

**UNALLOCATED ITEMS/OPTIONAL ITEMS**

3457.psa

**UNALLOCATED SKU REPORT**

	<b>UPC</b>	<b>NAME</b>	<b>MVMT</b>	<b>Profit</b>	<b>Sales</b>	<b>Category</b>	<b>Manufacturer</b>
64	1820079047	O'Doul's 12/12C	0.000	\$0.00	\$0.00	Non Alcohol	Anheuser-Busch InBev
65	79837312123	Magic Hat #9 12/12B	0.000	\$0.00	\$0.00	Micro	North American Breweri...
66	7289010011	Amstel Light 6/12B	0.000	\$0.00	\$0.00	Imports	Heineken USA
67	8248812700	Becks NA 6/12B	0.000	\$0.00	\$0.00	Non Alcohol	Anheuser-Busch InBev
68	8378333100	Sierra Nevada Torpedo Extra IPA 6/12B	0.000	\$0.00	\$0.00	Micro	Sierra Nevada
69	81760601000	Captain Lawrence Pale Ale 6/12B	0.000	\$0.00	\$0.00	Micro	Micro Breweries
70	8992420111	Yuengling Light Lager 6/12B	0.000	\$0.00	\$0.00	Premium	DG Yuengling & Sons
71	7199009561	Blue Moon White IPA 6/12B	0.000	\$0.00	\$0.00	Specialty	MillerCoors
72	8769200149	Angry Orchard Green Apple 6/12B	0.000	\$0.00	\$0.00	Cider	Boston Beer
73	8769229103	Samuel Adams Ssnl Variety-Mix Pk 12/...	0.000	\$0.00	\$0.00	Micro	Boston Beer
74	63625177612	Stone IPA 6/12B	0.000	\$0.00	\$0.00	Micro	Micro Breweries
75	8769200127	Samuel Adams Rebel IPA 6/12B	0.000	\$0.00	\$0.00	Micro	Boston Beer
76	63848900029	Dogfish Head 60 Minute IPA 6/12B	0.000	\$0.00	\$0.00	Micro	Micro Breweries
77	7199030104	Coors Light 9/16AL	0.000	\$0.00	\$0.00	Premium	MillerCoors
78	8769284102	Angry Orchard Apple Ginger 6/12B	0.000	\$0.00	\$0.00	Cider	Boston Beer
79	8769210014	Samuel Adams Boston Lgr 12/12B	0.000	\$0.00	\$0.00	Micro	Boston Beer
80	3410051607	Leinenkugel Seasonal Shandy 12/12B	0.000	\$0.00	\$0.00	Specialty	MillerCoors
81	1820000834	Budweiser 6/12B	0.000	\$0.00	\$0.00	Premium	Anheuser-Busch InBev
82	7143934806	Rolling Rock 6/12B	0.000	\$0.00	\$0.00	Sub Premium	Anheuser-Busch InBev
83	1820015981	Shock Top Belgian White Ale 12/12B	0.000	\$0.00	\$0.00	Specialty	Anheuser-Busch InBev
84	7289010016	Amstel Light 12/12B	0.000	\$0.00	\$0.00	Imports	Heineken USA
85	1820012982	Land Shark Lager 6/12B	0.000	\$0.00	\$0.00	Specialty	Anheuser-Busch InBev
86	8378316000	Sierra Nevada 4 Way IPA Vrtly Pck 12/...	0.000	\$0.00	\$0.00	Micro	Sierra Nevada
87	8797502650	Sapporo Draft 1/22C	0.000	\$0.00	\$0.00	Imports	Import
88	8992423040	Yuengling Light Lager 12/12B	0.000	\$0.00	\$0.00	Premium	DG Yuengling & Sons
89	8769227102	Samuel Adams Cherry Wht 6/12B	0.000	\$0.00	\$0.00	Micro	Boston Beer
90	68174511130	Blue Point Blueberry Ale 6/12B	0.000	\$0.00	\$0.00	Micro	Anheuser-Busch InBev
91	1497450009	Woodchuck Amber 6/12B	0.000	\$0.00	\$0.00	Cider	Vermont Hard Cider Co...
92	7199076400	George Killian's Irish Red 12/12B	0.000	\$0.00	\$0.00	Specialty	MillerCoors
93	1820012998	Land Shark Lager 12/12B	0.000	\$0.00	\$0.00	Specialty	Anheuser-Busch InBev
94	63598525945	Mikes HARDER Lemonade 12/8C	0.000	\$0.00	\$0.00	FMB	Mark Anthony Brands
95	9200002013	Small Town Not Your Fathers Gngr 6/1...	0.000	\$0.00	\$0.00	Micro	Pabst
96	7248002403	Schaefer 12/12C	0.000	\$0.00	\$0.00	Sub Premium	Pabst
97	7289000174	Heineken 1/169MBR	0.000	\$0.00	\$0.00	Imports	Heineken USA
98	8769275102	Twisted Tea Half & Half 6/12B	0.000	\$0.00	\$0.00	FMB	Boston Beer
99	8769200109	Samuel Adams Seasonal 12/12C	0.000	\$0.00	\$0.00	Micro	Boston Beer
100	1820016989	Shock Top Raspberry Wheat 6/12B	0.000	\$0.00	\$0.00	Specialty	Anheuser-Busch InBev
101	8769259102	Samuel Adams Latitude 48 IPA 6/12B	0.000	\$0.00	\$0.00	Micro	Boston Beer
102	8378322812	Sierra Nevada Seasonal 12/12B	0.000	\$0.00	\$0.00	Micro	Sierra Nevada
103	7199070002	George Killian's Irish Red 6/12B	0.000	\$0.00	\$0.00	Specialty	MillerCoors
104	4182700076	Harpoon IPA 6/12B	0.000	\$0.00	\$0.00	Micro	Harpoon
105	1820011985	Redbridge Lager 6/12B	0.000	\$0.00	\$0.00	Specialty	Anheuser-Busch InBev
106	1820017993	Shock Top Seasonal 6/12B	0.000	\$0.00	\$0.00	Specialty	Anheuser-Busch InBev
107	8769210012	Samuel Adams Boston Lgr 6/12B	0.000	\$0.00	\$0.00	Micro	Boston Beer
108	1820096721	Michelob Ultra 18/12C SC	0.000	\$0.00	\$0.00	Specialty	Anheuser-Busch InBev
109	68174511118	Blue Point Seasonal 6/12B	0.000	\$0.00	\$0.00	Micro	Anheuser-Busch InBev
110	85909300242	SixPoint Sweet Action 6/12C	0.000	\$0.00	\$0.00	Micro	Micro Breweries
111	70277008101	Omission Lager 6/12B	0.000	\$0.00	\$0.00	Micro	Anheuser-Busch InBev
112	9200002000	Small Town Not Your Fathers RtBr 6/1...	0.000	\$0.00	\$0.00	Micro	Pabst
113	1820000106	Bud Light 6/12C	0.000	\$0.00	\$0.00	Premium	Anheuser-Busch InBev
114	7199048004	Keystone Light 12/12C	0.000	\$0.00	\$0.00	Sub Premium	MillerCoors
115	4257205715	Clausthaler NA 6/12B	0.000	\$0.00	\$0.00	Non Alcohol	Import
116	8382012418	Guinness Nitro IPA 6/11C	0.000	\$0.00	\$0.00	Imports	Import
117	8992495432	Yuengling Black & Tan 6/12B	0.000	\$0.00	\$0.00	Premium	DG Yuengling & Sons
118	68174511112	Blue Point Toasted Lager 6/12B	0.000	\$0.00	\$0.00	Micro	Anheuser-Busch InBev
119	79837312125	Magic Hat Variety Pack 12/12B	0.000	\$0.00	\$0.00	Micro	North American Breweri...
120	1820014991	Bud Light Lime 6/12B	0.000	\$0.00	\$0.00	Specialty	Anheuser-Busch InBev
121	8378337512	Sierra Nevada Pale Ale 12/12B	0.000	\$0.00	\$0.00	Micro	Sierra Nevada
122	85909300244	SixPoint The Crisp 6/12C	0.000	\$0.00	\$0.00	Micro	Micro Breweries
123	8382010403	Guinness Draught 12/11B	0.000	\$0.00	\$0.00	Imports	Diageo
124	7289000000	Heineken 6/12C	0.000	\$0.00	\$0.00	Imports	Heineken USA
125	64286090024	Founders All Day IPA 15/12C	0.000	\$0.00	\$0.00	Micro	Micro Breweries
126	3410057509	Miller Lite 12/12B	0.000	\$0.00	\$0.00	Premium	MillerCoors



**UNALLOCATED ITEMS/OPTIONAL ITEMS**

3457.psa

**UNALLOCATED SKU REPORT**

	<b>UPC</b>	<b>NAME</b>	<b>MVMT</b>	<b>Profit</b>	<b>Sales</b>	<b>Category</b>	<b>Manufacturer</b>
127	86273700001	Montauk Summer Ale 6/12C	0.000	\$0.00	\$0.00	Micro	Micro Breweries
128	1820025505	Bud Light Lime Straw-Ber-Rita 1/25C	0.000	\$0.00	\$0.00	FMB	Anheuser-Busch InBev
129	4182700712	Harpoon IPA 12/12B	0.000	\$0.00	\$0.00	Micro	Harpoon
130	63598512998	Mikes Hard Variety Pack 12/11B	0.000	\$0.00	\$0.00	FMB	Mark Anthony Brands
131	8066095401	Coronita Extra 6/7B	0.000	\$0.00	\$0.00	Imports	Crown Imports LLC
132	68715190007	Southampton Double White Ale 6/12B	0.000	\$0.00	\$0.00	Micro	Micro Breweries
133	64286020024	Founders All Day IPA 6/12B	0.000	\$0.00	\$0.00	Micro	Micro Breweries
134	64286020007	Founders Dirty Bastard 6/12B	0.000	\$0.00	\$0.00	Micro	Micro Breweries
135	1820017991	Shock Top Sampler 12/12B	0.000	\$0.00	\$0.00	Specialty	Anheuser-Busch InBev
136	1820000833	Bud Light 6/12B	0.000	\$0.00	\$0.00	Premium	Anheuser-Busch InBev
137	86273700003	Montauk Session IPA 6/12C	0.000	\$0.00	\$0.00	Micro	Micro Breweries
138	72383000020	Lagunitas A Little Sumpin Sumpin 6/12B	0.000	\$0.00	\$0.00	Micro	Micro Breweries
139	8769200079	Angry Orchard Seasonal 6/12B	0.000	\$0.00	\$0.00	Cider	Boston Beer
140	8857333101	Shiner Bock 6/12B	0.000	\$0.00	\$0.00	Micro	Gambrinus
141	78624311990	Flying Dog Raging Btch Belgn Ale 6/12B	0.000	\$0.00	\$0.00	Micro	Micro Breweries
142	7199047712	Keystone Ice 1/24C	0.000	\$0.00	\$0.00	Sub Premium	MillerCoors
143	7199009554	Blue Moon Brewmaster's Sampler 12/1...	0.000	\$0.00	\$0.00	Specialty	MillerCoors
144	63598506822	Mikes Hard Light Lemonade 6/11B	0.000	\$0.00	\$0.00	FMB	Mark Anthony Brands
145	7231163011	Dos Equis Ambar 6/12B	0.000	\$0.00	\$0.00	Imports	Heineken USA
146	85114800500	Great South Bay Blood Orange 6/12B	0.000	\$0.00	\$0.00	Micro	Micro Breweries
147	3410008755	Redd's Wicked Black Cherry 12/10C	0.000	\$0.00	\$0.00	Specialty	MillerCoors
148	7089718331	Fosters Premium Ale 1/25C	0.000	\$0.00	\$0.00	Imports	MillerCoors
149	1820005989	Michelob Ultra 6/12B	0.000	\$0.00	\$0.00	Specialty	Anheuser-Busch InBev
150	8382018132	Guinness Blonde 6/12B	0.000	\$0.00	\$0.00	Imports	Diageo
151	8378322822	Sierra Nevada Seasonal 6/12B	0.000	\$0.00	\$0.00	Micro	Sierra Nevada
152	9425400015	Post Road Pumpkin Ale 6/12B	0.000	\$0.00	\$0.00	Micro	Micro Breweries
153	1820018993	Bud Light Platinum 6/12B	0.000	\$0.00	\$0.00	Specialty	Anheuser-Busch InBev
154	8382056793	Red Stripe 6/12B	0.000	\$0.00	\$0.00	Imports	Diageo
155	8769200269	Samuel Adams Rebel Rouser 6/12B	0.000	\$0.00	\$0.00	Micro	Boston Beer
156	1820019991	Shock Top Seasonal 12/12B	0.000	\$0.00	\$0.00	Specialty	Anheuser-Busch InBev
157	3410057023	Miller Lite 9/16AL	0.000	\$0.00	\$0.00	Premium	MillerCoors
158	1820021998	Shock Top Honeycrisp Apple Wheat 6/...	0.000	\$0.00	\$0.00	Specialty	Anheuser-Busch InBev
159	3061300071	Brooklyn Variety Pack 12/12B	0.000	\$0.00	\$0.00	Micro	Micro Breweries
160	79837312602	Magic Hat #9 6/12B	0.000	\$0.00	\$0.00	Micro	North American Breweri...
161	8769200033	Angry Orchard Crisp Apple 12/12B	0.000	\$0.00	\$0.00	Cider	Boston Beer
162	3410008722	Redd's Apple Ale 12/12B	0.000	\$0.00	\$0.00	Specialty	MillerCoors
163	7199009532	Blue Moon Seasonal 6/12B	0.000	\$0.00	\$0.00	Specialty	MillerCoors
164	79837312606	Magic Hat Seasonal 6/12B	0.000	\$0.00	\$0.00	Micro	North American Breweri...
165	8769230050	Samuel Adams Seasonal 6/12B	0.000	\$0.00	\$0.00	Micro	Boston Beer
166	3410057505	Miller Lite 6/12B	0.000	\$0.00	\$0.00	Premium	MillerCoors
167	88715100195	Coney Island Overpass IPA 6/12B	0.000	\$0.00	\$0.00	Micro	Boston Beer
168	7199030005	Coors Light 6/12B	0.000	\$0.00	\$0.00	Premium	MillerCoors
169	1820024008	Stella Artois Gft Pk 1/25B	0.000	\$0.00	\$0.00	Imports	Anheuser-Busch InBev
170	7199000008	Coors Light 6/12C	0.000	\$0.00	\$0.00	Premium	MillerCoors
171	88715100094	Coney Island Mermaid Pilsner 6/12B	0.000	\$0.00	\$0.00	Micro	Boston Beer
172	3410051605	Leinenkugel Seasonal Shandy 6/12B	0.000	\$0.00	\$0.00	Specialty	MillerCoors
173	8769200004	Samuel Adams Seasonal Select 6/12B	0.000	\$0.00	\$0.00	Micro	Boston Beer
174	8769200129	Samuel Adams Rebel IPA 12/12B	0.000	\$0.00	\$0.00	Micro	Boston Beer
175	8769230030	Samuel Adams Boston Ale 6/12B	0.000	\$0.00	\$0.00	Micro	Boston Beer
176	8992429386	Yuengling Black & Tan 12/12B	0.000	\$0.00	\$0.00	Premium	DG Yuengling & Sons
177	8834510005	Newcastle Brown Ale 6/12B	0.000	\$0.00	\$0.00	Imports	Heineken USA
178	1820000784	O'Doul's 6/12B	0.000	\$0.00	\$0.00	Non Alcohol	Anheuser-Busch InBev
179	88715100213	Coney Island Hard Root Beer 6/12B	0.000	\$0.00	\$0.00	Micro	Boston Beer
180	4182700146	Harpoon Seasonal 6/12B	0.000	\$0.00	\$0.00	Micro	Harpoon
181	1820000016	Budweiser 6/12C	0.000	\$0.00	\$0.00	Premium	Anheuser-Busch InBev
182	3410031602	Milwaukee's Best 12/12C	0.000	\$0.00	\$0.00	Sub Premium	MillerCoors
183	86273700000	Montauk Driftwood Ale 6/12C	0.000	\$0.00	\$0.00	Micro	Micro Breweries
184	7199030078	Coors Light 18/12B	0.000	\$0.00	\$0.00	Premium	MillerCoors
185	7143934450	Rolling Rock 12/12C	0.000	\$0.00	\$0.00	Sub Premium	Anheuser-Busch InBev
186	7289000158	Heineken Premium Light 6/12B	0.000	\$0.00	\$0.00	Imports	Heineken USA
187	1820024001	Stella Artois Cidre 6/12B	0.000	\$0.00	\$0.00	Cider	Anheuser-Busch InBev
188	1820002992	O'Doul's Amber 6/12B	0.000	\$0.00	\$0.00	Non Alcohol	Anheuser-Busch InBev
189	7167007106	Saranac Twelve Beers 12/12B	0.000	\$0.00	\$0.00	Micro	FX Matt

**UNALLOCATED ITEMS/OPTIONAL ITEMS**

3457.psa

**UNALLOCATED SKU REPORT**

	<b>UPC</b>	<b>NAME</b>	<b>MVMT</b>	<b>Profit</b>	<b>Sales</b>	<b>Category</b>	<b>Manufacturer</b>
190	1820053308	Bud Light 18/12B	0.000	\$0.00	\$0.00	Premium	Anheuser-Busch InBev
191	1820023984	Oculito 6/12B	0.000	\$0.00	\$0.00	Micro	Anheuser-Busch InBev
192	1820023989	Mixx Tail Hurricane 8/11.5AL	0.000	\$0.00	\$0.00	FMB	Anheuser-Busch InBev
193	3061300053	Brooklyn Seasonal 6/12B	0.000	\$0.00	\$0.00	Micro	Micro Breweries
194	2210000170	Pabst 12/12C	0.000	\$0.00	\$0.00	Sub Premium	Pabst
195	78615000057	Stella Artois 1/22B	0.000	\$0.00	\$0.00	Imports	Anheuser-Busch InBev
196	72383000009	Lagunitas IPA 6/12B	0.000	\$0.00	\$0.00	Micro	Micro Breweries
197	1820011308	Budweiser 18/12B	0.000	\$0.00	\$0.00	Premium	Anheuser-Busch InBev
198	1820006991	Michelob Ultra 12/12C SC	0.000	\$0.00	\$0.00	Specialty	Anheuser-Busch InBev
199	8066095680	Corona Extra 18/12B	0.000	\$0.00	\$0.00	Imports	Crown Imports LLC
200	8769201103	Samuel Adams Seasonal 12/12B	0.000	\$0.00	\$0.00	Micro	Boston Beer
201	8769200255	Angry Orchard Hop N Mad 6/12B	0.000	\$0.00	\$0.00	Cider	Boston Beer
202	83972800411	Big Flats Lager Beer 6/12C	0.000	\$0.00	\$0.00	Sub Premium	Micro Breweries
203	85909300243	SixPoint Bengali 6/12C	0.000	\$0.00	\$0.00	Micro	Micro Breweries
204	7199009511	Blue Moon Belgian White Ale 6/12B	0.000	\$0.00	\$0.00	Specialty	MillerCoors
205	8382023473	Harp Lager 6/12B	0.000	\$0.00	\$0.00	Imports	Diageo
206	8066095625	Corona Light 6/12B	0.000	\$0.00	\$0.00	Imports	Crown Imports LLC