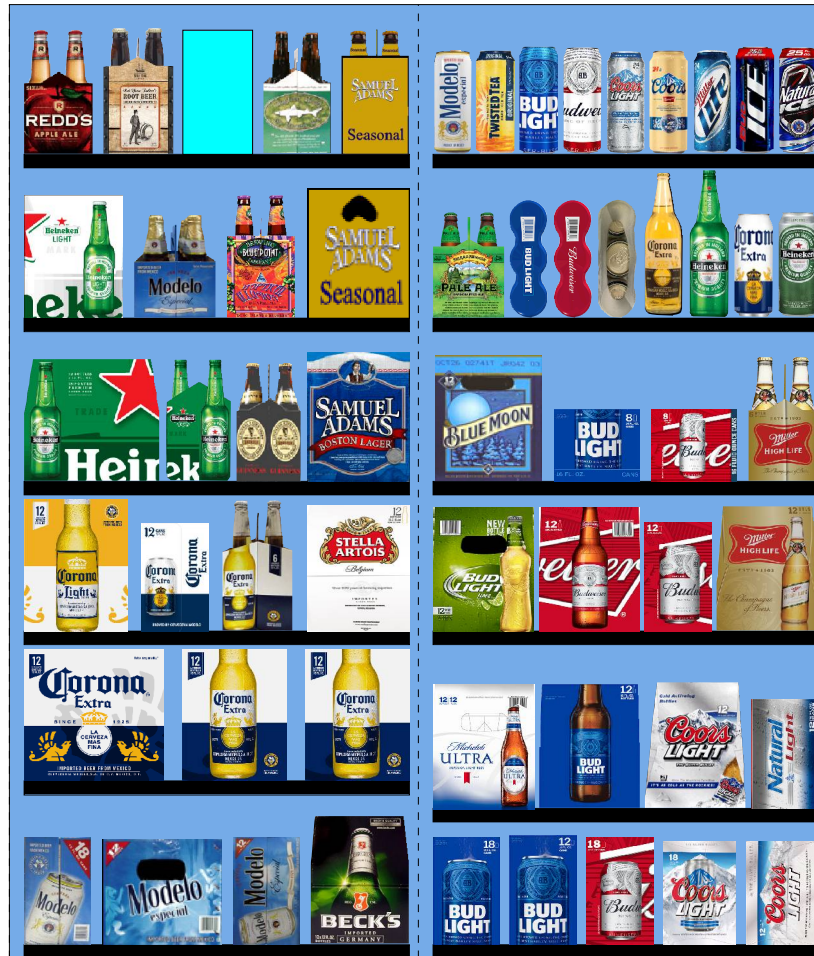


5956.psa For Validation Purposes Only NOT FINAL



Printed: 4/14/2016

Traffic Flow Left-right

POG: 5956.psa



POG Size: 5'0.00

Segments 1 - 2 of 2

Page: 1

SCHEMATIC BACKING REPORT

5956.psa

Planogram: 5956.psa

Segment #1 : Shelf #6 DEPTH: 36 in WIDTH: 28 in DISTANCE FROM TOP OF BASE SHELF TO BOTTOM OF SHELF: 0.00 in

POS	# FAC	UPC	ID	NAME	CASES	CAPACITY	UNITS HIGH	DOS	MVMT
19	1	8066095711	8066095711	Modelo 18/12C	2.0	2	1	18.2	0.8
20	1	8066095757	8066095757	Modelo 12/12B	1.0	2	1	5.5	2.5
21	1	8066095715	8066095715	Modelo 12/12C	1.5	3	1	3.2	6.6
22	1	8248812300	8248812300	Becks 12/12B	1.5	3	1	19.0	1.1

Segment #1 : Shelf #5 DEPTH: 36 in WIDTH: 28 in DISTANCE FROM TOP OF BASE SHELF TO BOTTOM OF SHELF: 12.00 in

POS	# FAC	UPC	ID	NAME	CASES	CAPACITY	UNITS HIGH	DOS	MVMT
18	1	8066095615	8066095615	Corona Extra 12/12B	4.0	8	1	1.2	45.2

Segment #1 : Shelf #4 DEPTH: 36 in WIDTH: 28 in DISTANCE FROM TOP OF BASE SHELF TO BOTTOM OF SHELF: 23.00 in

POS	# FAC	UPC	ID	NAME	CASES	CAPACITY	UNITS HIGH	DOS	MVMT
14	1	8066095675	8066095675	Corona Light 12/12B	1.5	3	1	21.5	1.0
15	1	8066095695	8066095695	Corona Extra 12/12C	1.5	3	1	7.4	2.8
16	1	8066095605	8066095605	Corona Extra 6/12B	1.0	4	1	9.9	2.8
17	1	78615000014	78615000014	Stella Artois 12/11B	1.5	3	1	4.9	4.3

Segment #1 : Shelf #3 DEPTH: 36 in WIDTH: 28 in DISTANCE FROM TOP OF BASE SHELF TO BOTTOM OF SHELF: 34.00 in

POS	# FAC	UPC	ID	NAME	CASES	CAPACITY	UNITS HIGH	DOS	MVMT
10	1	7289000016	7289000016	Heineken 12/12B	2.0	4	1	1.8	15.6
11	1	7289000011	7289000011	Heineken 6/12B	1.0	4	1	29.7	0.9
12	1	8382012393	8382012393	Guinness Extra Stout 6/11B	1.3	5	1	19.8	1.8
13	1	8769210014	8769210014	Samuel Adams Boston Lgr 12/12B	1.5	3	1	59.2	0.4

Segment #1 : Shelf #2 DEPTH: 36 in WIDTH: 28 in DISTANCE FROM TOP OF BASE SHELF TO BOTTOM OF SHELF: 46.00 in

POS	# FAC	UPC	ID	NAME	CASES	CAPACITY	UNITS HIGH	DOS	MVMT
6	1	7289000159	7289000159	Heineken Premium Light 12/12B	1.5	3	1	8.0	2.6
7	1	8066095765	8066095765	Modelo 6/12B	1.0	4	1	0.0	0.0
8	1	68174511102	68174511102	Blue Point Hoptical Illusion 6/12B	1.0	4	1	0.0	0.0
9	1	8769201103	8769201103	Samuel Adams Seasonal 12/12B	1.5	3	1	35.7	0.6

Segment #1 : Shelf #1 DEPTH: 36 in WIDTH: 28 in DISTANCE FROM TOP OF BASE SHELF TO BOTTOM OF SHELF: 58.00 in

POS	# FAC	UPC	ID	NAME	CASES	CAPACITY	UNITS HIGH	DOS	MVMT
1	1	3410008716	3410008716	Redd's Apple Ale 6/12B	1.0	4	1	24.2	1.2
2	1	9200002000	9200002000	Small Town Not Your Fathers RtBr 6/12B	1.0	4	1	30.3	0.9
3	1	88715100213	88715100213	Coney Island Hard Root Beer 6/12B	1.0	4	1	14.0	2.0
4	1	63848900029	63848900029	Dogfish Head 60 Minute IPA 6/12B	1.0	4	1	64.4	0.4
5	1	87692300050	87692300050	Samuel Adams Seasonal 6/12B	1.0	4	1	24.3	1.2

Segment #2 : Shelf #6 DEPTH: 36 in WIDTH: 28 in DISTANCE FROM TOP OF BASE SHELF TO BOTTOM OF SHELF: 0.00 in

POS	# FAC	UPC	ID	NAME	CASES	CAPACITY	UNITS HIGH	DOS	MVMT
52	1	1820053218	1820053218	Bud Light 18/12C	2.0	2	1	14.8	0.9
53	1	1820053047	1820053047	Bud Light 12/12C	1.5	3	1	6.5	3.3
54	1	1820011218	1820011218	Budweiser 18/12C	2.0	2	1	10.5	1.3
55	1	7199030017	7199030017	Coors Light 18/12C	2.0	2	1	2.3	6.2
56	1	7199000048	7199000048	Coors Light 12/12C	1.5	3	1	3.5	5.9

SCHEMATIC BACKING REPORT

5956.psa

Segment #2 : Shelf #5 DEPTH: 36 in WIDTH: 28 in DISTANCE FROM TOP OF BASE SHELF TO BOTTOM OF SHELF: 10.00 in

POS	# FAC	UPC	ID	NAME	CASES	CAPACITY	UNITS HIGH	DOS	MVMT
48	1	1820005990	1820005990	Michelob Ultra 12/12B	1.5	3	1	19.5	1.1
49	1	1820000769	1820000769	Bud Light 12/12B	1.5	3	1	11.6	1.8
50	1	7199030069	7199030069	Coors Light 12/12B	1.5	3	1	16.5	1.3
51	1	1820015047	1820015047	Natural Light 12/12C	1.5	3	1	16.1	1.3

Segment #2 : Shelf #4 DEPTH: 36 in WIDTH: 28 in DISTANCE FROM TOP OF BASE SHELF TO BOTTOM OF SHELF: 23.00 in

POS	# FAC	UPC	ID	NAME	CASES	CAPACITY	UNITS HIGH	DOS	MVMT
44	1	1820014990	1820014990	Bud Light Lime 12/12B	1.5	3	1	18.2	1.2
45	1	1820000771	1820000771	Budweiser 12/12B	1.5	3	1	6.5	3.2
46	1	1820011047	1820011047	Budweiser 12/12C	1.5	3	1	4.5	4.7
47	1	3410001509	3410001509	Miller High Life 12/12B	1.5	3	1	11.0	1.9

Segment #2 : Shelf #3 DEPTH: 36 in WIDTH: 28 in DISTANCE FROM TOP OF BASE SHELF TO BOTTOM OF SHELF: 34.00 in

POS	# FAC	UPC	ID	NAME	CASES	CAPACITY	UNITS HIGH	DOS	MVMT
40	1	7199009516	7199009516	Blue Moon Belgian White Ale 12/12B	1.5	3	1	36.5	0.6
41	1	1820008989	1820008989	Bud Light 8/16C	1.0	3	1	0.0	0.0
42	1	1820008981	1820008981	Budweiser 8/16C	1.0	3	1	0.0	0.0
43	1	3410001505	3410001505	Miller High Life 6/12B	1.0	4	1	0.0	0.0

Segment #2 : Shelf #2 DEPTH: 36 in WIDTH: 28 in DISTANCE FROM TOP OF BASE SHELF TO BOTTOM OF SHELF: 46.00 in

POS	# FAC	UPC	ID	NAME	CASES	CAPACITY	UNITS HIGH	DOS	MVMT
32	1	8378337521	8378337521	Sierra Nevada Pale Ale 6/12B	1.0	4	1	52.0	0.5
33	1	1820021986	1820021986	Bud Light 3/25C	0.8	4	1	0.0	0.0
34	1	1820021985	1820021985	Budweiser 3/25C	0.8	4	1	0.0	0.0
35	1	7199030120	7199030120	Coors Light 3/24C	0.8	4	1	1166.7	0.0
36	1	8066095641	8066095641	Corona Extra 1/24B	0.9	11	1	0.0	0.0
37	1	7289000478	7289000478	Heineken 1/22B	1.0	12	1	0.0	0.0
38	1	8066095643	8066095643	Corona Extra 1/24C	1.0	12	1	0.0	0.0
39	1	7289000119	7289000119	Heineken 1/24C	1.0	12	1	0.0	0.0

Segment #2 : Shelf #1 DEPTH: 36 in WIDTH: 28 in DISTANCE FROM TOP OF BASE SHELF TO BOTTOM OF SHELF: 58.00 in

POS	# FAC	UPC	ID	NAME	CASES	CAPACITY	UNITS HIGH	DOS	MVMT
23	1	8066095721	8066095721	Modelo 1/24C	1.0	12	1	0.0	0.0
24	1	8769283231	8769283231	Twisted Tea 1/24C	1.0	12	1	0.0	0.0
25	1	1820025001	1820025001	Bud Light 1/25C	0.8	12	1	22.3	3.8
26	1	1820025000	1820025000	Budweiser 1/25C	0.8	12	1	17.3	4.8
27	1	7199030065	7199030065	Coors Light 1/24C	1.0	12	1	12.4	6.8
28	1	7199010071	7199010071	Coors 1/24C	1.0	12	1	12.6	6.7
29	1	3410000355	3410000355	Miller Lite 1/24C	1.0	12	1	22.3	3.8
30	1	1820025006	1820025006	Bud Ice 1/25C	0.8	12	1	0.0	0.0
31	1	1820025008	1820025008	Natural Ice 1/25C	0.8	12	1	0.0	0.0

SKUs on Planogram: 56

UNALLOCATED ITEMS/OPTIONAL ITEMS

5956.psa

UNALLOCATED SKU REPORT

	UPC	NAME	MVMT	Profit	Sales	Category	Manufacturer
1	1820095999	Bud Light Lime Lemon-Ade-Rita 1/25C	1.231	\$0.00	\$0.00	FMB	Anheuser-Busch InBev
2	8248812345	Becks 6/12B	1.000	\$0.00	\$0.00	Imports	Anheuser-Busch InBev
3	1820000834	Budweiser 6/12B	0.922	\$0.00	\$0.00	Premium	Anheuser-Busch InBev
4	8066095625	Corona Light 6/12B	0.864	\$0.00	\$0.00	Imports	Crown Imports LLC
5	1820000833	Bud Light 6/12B	0.846	\$0.00	\$0.00	Premium	Anheuser-Busch InBev
6	1820000964	Natural Ice 12/12C	0.769	\$0.00	\$0.00	Sub Premium	Anheuser-Busch InBev
7	8382012360	Guinness Draught 4/15C	0.769	\$0.00	\$0.00	Imports	Diageo
8	1820014991	Bud Light Lime 6/12B	0.692	\$0.00	\$0.00	Specialty	Anheuser-Busch InBev
9	1820022988	Bud Light Lime Raz-Ber-Rita 12/8C	0.692	\$0.00	\$0.00	FMB	Anheuser-Busch InBev
10	8374100005	Grolsch 6/12B	0.615	\$0.00	\$0.00	Imports	MillerCoors
11	1820025538	Bud Light Lime-A-Rita Seasonal 1/25C	0.543	\$0.00	\$0.00	FMB	Anheuser-Busch InBev
12	63598506074	Mikes Hard Seasonal 6/11B	0.538	\$0.00	\$0.00	FMB	Mark Anthony Brands
13	3061300001	Brooklyn Lager 6/12B	0.462	\$0.00	\$0.00	Micro	Micro Breweries
14	8834510158	Strongbow Honey Apple Cider 6/11B	0.462	\$0.00	\$0.00	Cider	Heineken USA
15	85858400302	Palm Speciale 6/11B	0.385	\$0.00	\$0.00	Imports	Import
16	1820024001	Stella Artois Cidre 6/12B	0.385	\$0.00	\$0.00	Cider	Anheuser-Busch InBev
17	3410051605	Leinenkugel Seasonal Shandy 6/12B	0.385	\$0.00	\$0.00	Specialty	MillerCoors
18	8382007152	Smithwicks Irish Ale 6/12B	0.385	\$0.00	\$0.00	Imports	Diageo
19	7199030005	Coors Light 6/12B	0.322	\$0.00	\$0.00	Premium	MillerCoors
20	8378333100	Sierra Nevada Torpedo Extra IPA 6/12B	0.308	\$0.00	\$0.00	Micro	Sierra Nevada
21	7289010011	Amstel Light 6/12B	0.308	\$0.00	\$0.00	Imports	Heineken USA
22	8982623010	Beers of Mexico 12/12B	0.308	\$0.00	\$0.00	Imports	Heineken USA
23	8839400002	Spaten Premium Lager 6/12B	0.308	\$0.00	\$0.00	Imports	Anheuser-Busch InBev
24	8066095787	Negra Modelo 12/12B	0.308	\$0.00	\$0.00	Imports	Crown Imports LLC
25	1820016995	Stella Artois 10/15C	0.308	\$0.00	\$0.00	Imports	Anheuser-Busch InBev
26	7199009511	Blue Moon Belgian White Ale 6/12B	0.308	\$0.00	\$0.00	Specialty	MillerCoors
27	8200072754	Smirnoff Ice Raspberry 6/11B	0.308	\$0.00	\$0.00	FMB	Diageo
28	63598525948	Mikes HARDER Blk Cherry Lemonade ...	0.308	\$0.00	\$0.00	FMB	Mark Anthony Brands
29	7199009532	Blue Moon Seasonal 6/12B	0.308	\$0.00	\$0.00	Specialty	MillerCoors
30	7231163012	Dos Equis Lager 6/12B	0.308	\$0.00	\$0.00	Imports	Heineken USA
31	1820013986	Shock Top Belgian White Ale 6/12B	0.308	\$0.00	\$0.00	Specialty	Anheuser-Busch InBev
32	3410057340	Miller Lite 18/12C	0.306	\$0.00	\$0.00	Premium	MillerCoors
33	2210000170	Pabst 12/12C	0.250	\$0.00	\$0.00	Sub Premium	Pabst
34	1820025505	Bud Light Lime Straw-Ber-Rita 1/25C	0.249	\$0.00	\$0.00	FMB	Anheuser-Busch InBev
35	8769200004	Samuel Adams Seasonal Select 6/12B	0.231	\$0.00	\$0.00	Micro	Boston Beer
36	1820019987	Bud Light Lime-A-Rita 12/8C	0.231	\$0.00	\$0.00	FMB	Anheuser-Busch InBev
37	63598512998	Mikes Hard Variety Pack 12/11B	0.231	\$0.00	\$0.00	FMB	Mark Anthony Brands
38	8382010401	Guinness Draught 6/11B	0.231	\$0.00	\$0.00	Imports	Diageo
39	18195400002	Peroni Nastro Azzuro 6/12B	0.231	\$0.00	\$0.00	Imports	MillerCoors
40	8780000049	Smith & Forge Hard Cider 4/16C	0.231	\$0.00	\$0.00	Cider	MillerCoors
41	78615000036	Hoegaarden 6/11B	0.231	\$0.00	\$0.00	Imports	Anheuser-Busch InBev
42	8769200033	Angry Orchard Crisp Apple 12/12B	0.231	\$0.00	\$0.00	Cider	Boston Beer
43	3410058805	Leinenkugel Heritage Seasonal 6/12B	0.231	\$0.00	\$0.00	Specialty	MillerCoors
44	3061301136	Brooklyn East India Pale Ale 12/12C	0.231	\$0.00	\$0.00	Micro	Micro Breweries
45	68174511112	Blue Point Toasted Lager 6/12B	0.173	\$0.00	\$0.00	Micro	Anheuser-Busch InBev
46	81760601000	Captain Lawrence Pale Ale 6/12B	0.154	\$0.00	\$0.00	Micro	Micro Breweries
47	8382018132	Guinness Blonde 6/12B	0.154	\$0.00	\$0.00	Imports	Diageo
48	3410000340	Redd's Variety Pack 12/12B	0.154	\$0.00	\$0.00	Specialty	MillerCoors
49	8200072751	Smirnoff Ice Green Apple 6/11B	0.154	\$0.00	\$0.00	FMB	Diageo
50	78036980212	Shipyard Seasonal Ale 12/12B	0.154	\$0.00	\$0.00	Micro	Micro Breweries
51	1820015983	Bud Light Lime 12/12C SC	0.154	\$0.00	\$0.00	Specialty	Anheuser-Busch InBev
52	1820016989	Shock Top Raspberry Wheat 6/12B	0.154	\$0.00	\$0.00	Specialty	Anheuser-Busch InBev
53	63598506744	Mikes Hard Black Cherry Lemonade 6/...	0.154	\$0.00	\$0.00	FMB	Mark Anthony Brands
54	73692011182	Goose Island 312 Urban Wheat Ale 6/1...	0.154	\$0.00	\$0.00	Micro	Anheuser-Busch InBev
55	1497450009	Woodchuck Amber 6/12B	0.154	\$0.00	\$0.00	Cider	Vermont Hard Cider Co...
56	8200075748	Smirnoff Ice Screwdriver 6/11B	0.154	\$0.00	\$0.00	FMB	Diageo
57	63598525945	Mikes HARDER Lemonade 12/8C	0.154	\$0.00	\$0.00	FMB	Mark Anthony Brands
58	1820021979	Budweiser 8/16AL	0.140	\$0.00	\$0.00	Premium	Anheuser-Busch InBev
59	79837312602	Magic Hat #9 6/12B	0.115	\$0.00	\$0.00	Micro	North American Breweri...
60	1820022989	Bud Light Lime Mang-O-Rita 12/8C	0.077	\$0.00	\$0.00	FMB	Anheuser-Busch InBev
61	63598510062	Mikes Hard Lemonade 6/11B	0.077	\$0.00	\$0.00	FMB	Mark Anthony Brands
62	7231133140	Dos Equis Ambar 12/12B	0.077	\$0.00	\$0.00	Imports	Heineken USA
63	79871322008	Carib Shandy Sorrell 6/12B	0.077	\$0.00	\$0.00	Imports	Import

UNALLOCATED ITEMS/OPTIONAL ITEMS

5956.psa

UNALLOCATED SKU REPORT

	UPC	NAME	MVMT	Profit	Sales	Category	Manufacturer
64	7861500030	Lefte Blonde 6/11B	0.077	\$0.00	\$0.00	Imports	Anheuser-Busch InBev
65	63598560611	Mikes Hard Cranberry Lemonade 6/11B	0.077	\$0.00	\$0.00	FMB	Mark Anthony Brands
66	7231163001	Pilsner Urquell 6/12B	0.077	\$0.00	\$0.00	Imports	MillerCoors
67	8834510053	Newcastle Brown Ale 12/12B	0.077	\$0.00	\$0.00	Imports	Heineken USA
68	7231123012	Dos Equis Lager 12/12B	0.077	\$0.00	\$0.00	Imports	Heineken USA
69	3410008730	Redd's Strawberry Ale 6/12B	0.077	\$0.00	\$0.00	Specialty	MillerCoors
70	7199009584	Blue Moon Cinnamon Horchata Ale 6/1...	0.074	\$0.00	\$0.00	Specialty	MillerCoors
71	1820017993	Shock Top Seasonal 6/12B	0.041	\$0.00	\$0.00	Specialty	Anheuser-Busch InBev
72	1820015981	Shock Top Belgian White Ale 12/12B	0.037	\$0.00	\$0.00	Specialty	Anheuser-Busch InBev
73	8378337512	Sierra Nevada Pale Ale 12/12B	0.036	\$0.00	\$0.00	Micro	Sierra Nevada
74	3061300053	Brooklyn Seasonal 6/12B	0.031	\$0.00	\$0.00	Micro	Micro Breweries
75	3410057636	Miller Lite 12/12C	0.029	\$0.00	\$0.00	Premium	MillerCoors
76	8992427896	Yuengling Traditional Lager 12/12B	0.024	\$0.00	\$0.00	Premium	DG Yuengling & Sons
77	7199009554	Blue Moon Brewmaster's Sampler 12/1...	0.023	\$0.00	\$0.00	Specialty	MillerCoors
78	7199009536	Blue Moon Seasonal 12/12B	0.021	\$0.00	\$0.00	Specialty	MillerCoors
79	7167007106	Saranac Twelve Beers 12/12B	0.019	\$0.00	\$0.00	Micro	FX Matt
80	3410057509	Miller Lite 12/12B	0.015	\$0.00	\$0.00	Premium	MillerCoors
81	68174511118	Blue Point Seasonal 6/12B	0.013	\$0.00	\$0.00	Micro	Anheuser-Busch InBev
82	8769229103	Samuel Adams Ssnl Variety-Mix Pk 12/...	0.012	\$0.00	\$0.00	Micro	Boston Beer
83	1820025533	Bud Light Lime Mang-O-Rita 1/25C	0.012	\$0.00	\$0.00	FMB	Anheuser-Busch InBev
84	8769200127	Samuel Adams Rebel IPA 6/12B	0.008	\$0.00	\$0.00	Micro	Boston Beer
85	1820020993	Bud Light Lime Straw-Ber-Rita 12/8C	0.005	\$0.00	\$0.00	FMB	Anheuser-Busch InBev
86	1820025014	Bud Light Lime-A-Rita 1/25C	0.004	\$0.00	\$0.00	FMB	Anheuser-Busch InBev
87	8834510005	Newcastle Brown Ale 6/12B	0.000	\$0.00	\$0.00	Imports	Heineken USA
88	8992423040	Yuengling Light Lager 12/12B	0.000	\$0.00	\$0.00	Premium	DG Yuengling & Sons
89	4182700076	Harpoon IPA 6/12B	0.000	\$0.00	\$0.00	Micro	Harpoon
90	3410057023	Miller Lite 9/16AL	0.000	\$0.00	\$0.00	Premium	MillerCoors
91	86273700000	Montauk Driftwood Ale 6/12C	0.000	\$0.00	\$0.00	Micro	Micro Breweries
92	85114800500	Great South Bay Blood Orange 6/12B	0.000	\$0.00	\$0.00	Micro	Micro Breweries
93	76227407131	Bass Pale Ale 6/12B	0.000	\$0.00	\$0.00	Imports	Anheuser-Busch InBev
94	68174512252	Blue Point Mosaic Session IPA 4/16C	0.000	\$0.00	\$0.00	Micro	Anheuser-Busch InBev
95	7199030104	Coors Light 9/16AL	0.000	\$0.00	\$0.00	Premium	MillerCoors
96	8769200017	Angry Orchard Variety Pack 12/12B	0.000	\$0.00	\$0.00	Cider	Boston Beer
97	1820019991	Shock Top Seasonal 12/12B	0.000	\$0.00	\$0.00	Specialty	Anheuser-Busch InBev
98	1820020994	Bud Light Platinum 12/12C SC	0.000	\$0.00	\$0.00	Specialty	Anheuser-Busch InBev
99	8769283102	Twisted Tea 6/12B	0.000	\$0.00	\$0.00	FMB	Boston Beer
100	1820021998	Shock Top Honeycrisp Apple Wheat 6/...	0.000	\$0.00	\$0.00	Specialty	Anheuser-Busch InBev
101	8769284102	Angry Orchard Apple Ginger 6/12B	0.000	\$0.00	\$0.00	Cider	Boston Beer
102	3410000323	Redd's Wicked Apple 1/24C	0.000	\$0.00	\$0.00	Specialty	MillerCoors
103	8769227102	Samuel Adams Cherry Wht 6/12B	0.000	\$0.00	\$0.00	Micro	Boston Beer
104	8769210012	Samuel Adams Boston Lgr 6/12B	0.000	\$0.00	\$0.00	Micro	Boston Beer
105	72383000020	Lagunitas A Little Sumpin Sumpin 6/12B	0.000	\$0.00	\$0.00	Micro	Micro Breweries
106	3410057505	Miller Lite 6/12B	0.000	\$0.00	\$0.00	Premium	MillerCoors
107	76227407531	Bass Pale Ale 12/12B	0.000	\$0.00	\$0.00	Imports	Anheuser-Busch InBev
108	85998900522	Greenport Harbor Seasonal 6/12B	0.000	\$0.00	\$0.00	Micro	Micro Breweries
109	73692011139	Goose Island Seasonal Sampler 12/12B	0.000	\$0.00	\$0.00	Micro	Anheuser-Busch InBev
110	8200072385	Smirnoff Ice 6/11B	0.000	\$0.00	\$0.00	FMB	Diageo
111	78624311990	Flying Dog Raging Btch Belgn Ale 6/12B	0.000	\$0.00	\$0.00	Micro	Micro Breweries
112	7143934806	Rolling Rock 6/12B	0.000	\$0.00	\$0.00	Sub Premium	Anheuser-Busch InBev
113	1820011985	Redbridge Lager 6/12B	0.000	\$0.00	\$0.00	Specialty	Anheuser-Busch InBev
114	3410015509	Miller 64 12/12B	0.000	\$0.00	\$0.00	Premium	MillerCoors
115	3061300071	Brooklyn Variety Pack 12/12B	0.000	\$0.00	\$0.00	Micro	Micro Breweries
116	8378322822	Sierra Nevada Seasonal 6/12B	0.000	\$0.00	\$0.00	Micro	Sierra Nevada
117	68715190007	Southampton Double White Ale 6/12B	0.000	\$0.00	\$0.00	Micro	Micro Breweries
118	68715190018	Southampton IPA 6/12B	0.000	\$0.00	\$0.00	Micro	Micro Breweries
119	8992427891	Yuengling Traditional Lager 6/12B	0.000	\$0.00	\$0.00	Premium	DG Yuengling & Sons
120	8769200079	Angry Orchard Seasonal 6/12B	0.000	\$0.00	\$0.00	Cider	Boston Beer
121	85114800506	Great South Bay Seasonal 6/12B	0.000	\$0.00	\$0.00	Micro	Micro Breweries
122	4182700712	Harpoon IPA 12/12B	0.000	\$0.00	\$0.00	Micro	Harpoon
123	8066095401	Coronita Extra 6/7B	0.000	\$0.00	\$0.00	Imports	Crown Imports LLC
124	1820000784	O'Doul's 6/12B	0.000	\$0.00	\$0.00	Non Alcohol	Anheuser-Busch InBev
125	64286090024	Founders All Day IPA 15/12C	0.000	\$0.00	\$0.00	Micro	Micro Breweries
126	8382056793	Red Stripe 6/12B	0.000	\$0.00	\$0.00	Imports	Diageo

UNALLOCATED ITEMS/OPTIONAL ITEMS

5956.psa

UNALLOCATED SKU REPORT

	UPC	NAME	MVMT	Profit	Sales	Category	Manufacturer
127	86273700001	Montauk Summer Ale 6/12C	0.000	\$0.00	\$0.00	Micro	Micro Breweries
128	1820005989	Michelob Ultra 6/12B	0.000	\$0.00	\$0.00	Specialty	Anheuser-Busch InBev
129	73692011439	Goose Island India Pale Ale 4/16C	0.000	\$0.00	\$0.00	Micro	Anheuser-Busch InBev
130	78615000001	Stella Artois 6/11B	0.000	\$0.00	\$0.00	Imports	Anheuser-Busch InBev
131	1820012998	Land Shark Lager 12/12B	0.000	\$0.00	\$0.00	Specialty	Anheuser-Busch InBev
132	7089718331	Fosters Premium Ale 1/25C	0.000	\$0.00	\$0.00	Imports	MillerCoors
133	8769200255	Angry Orchard Hop N Mad 6/12B	0.000	\$0.00	\$0.00	Cider	Boston Beer
134	1820000106	Bud Light 6/12C	0.000	\$0.00	\$0.00	Premium	Anheuser-Busch InBev
135	8857333101	Shiner Bock 6/12B	0.000	\$0.00	\$0.00	Micro	Gambrinus
136	1820097007	Bud Light Lime Lemon-Ade-Rita 12/8C	0.000	\$0.00	\$0.00	FMB	Anheuser-Busch InBev
137	3410008746	Redd's Green Apple 6/12B	0.000	\$0.00	\$0.00	Specialty	MillerCoors
138	7199070002	George Killian's Irish Red 6/12B	0.000	\$0.00	\$0.00	Specialty	MillerCoors
139	8382012368	Guinness Draught 8/15C	0.000	\$0.00	\$0.00	Imports	Diageo
140	7199047712	Keystone Ice 1/24C	0.000	\$0.00	\$0.00	Sub Premium	MillerCoors
141	7289000000	Heineken 6/12C	0.000	\$0.00	\$0.00	Imports	Heineken USA
142	7289000188	Heineken Premium Light 12/12C	0.000	\$0.00	\$0.00	Imports	Heineken USA
143	7199000008	Coors Light 6/12C	0.000	\$0.00	\$0.00	Premium	MillerCoors
144	1820006991	Michelob Ultra 12/12C SC	0.000	\$0.00	\$0.00	Specialty	Anheuser-Busch InBev
145	72383000009	Lagunitas IPA 6/12B	0.000	\$0.00	\$0.00	Micro	Micro Breweries
146	8382023473	Harp Lager 6/12B	0.000	\$0.00	\$0.00	Imports	Diageo
147	7143934450	Rolling Rock 12/12C	0.000	\$0.00	\$0.00	Sub Premium	Anheuser-Busch InBev
148	85909300244	SixPoint The Crisp 6/12C	0.000	\$0.00	\$0.00	Micro	Micro Breweries
149	1820017991	Shock Top Sampler 12/12B	0.000	\$0.00	\$0.00	Specialty	Anheuser-Busch InBev
150	70277008101	Omission Lager 6/12B	0.000	\$0.00	\$0.00	Micro	Anheuser-Busch InBev
151	79837312606	Magic Hat Seasonal 6/12B	0.000	\$0.00	\$0.00	Micro	North American Breweri...
152	88715100195	Coney Island Overpass IPA 6/12B	0.000	\$0.00	\$0.00	Micro	Boston Beer
153	8769200129	Samuel Adams Rebel IPA 12/12B	0.000	\$0.00	\$0.00	Micro	Boston Beer
154	88715100094	Coney Island Mermaid Pilsner 6/12B	0.000	\$0.00	\$0.00	Micro	Boston Beer
155	3410000349	Redd's Wicked Mango 1/24C	0.000	\$0.00	\$0.00	Specialty	MillerCoors
156	85909300242	SixPoint Sweet Action 6/12C	0.000	\$0.00	\$0.00	Micro	Micro Breweries
157	86273700003	Montauk Session IPA 6/12C	0.000	\$0.00	\$0.00	Micro	Micro Breweries
158	64286020007	Founders Dirty Bastard 6/12B	0.000	\$0.00	\$0.00	Micro	Micro Breweries
159	7199017028	Coors 6/12B	0.000	\$0.00	\$0.00	Premium	MillerCoors
160	88715100051	Traveler Seasonal Shandy 6/12B	0.000	\$0.00	\$0.00	Micro	Boston Beer
161	8382010403	Guinness Draught 12/11B	0.000	\$0.00	\$0.00	Imports	Diageo
162	8382012418	Guinness Nitro IPA 6/11C	0.000	\$0.00	\$0.00	Imports	
163	79603011493	Kona Castaway IPA 6/12B	0.000	\$0.00	\$0.00	Micro	Anheuser-Busch InBev
164	68174521122	Blue Point Variety 12/12B	0.000	\$0.00	\$0.00	Micro	Anheuser-Busch InBev
165	1820096721	Michelob Ultra 18/12C SC	0.000	\$0.00	\$0.00	Specialty	Anheuser-Busch InBev
166	79837312123	Magic Hat #9 12/12B	0.000	\$0.00	\$0.00	Micro	North American Breweri...
167	3410008810	Miller Fortune 6/12B	0.000	\$0.00	\$0.00	Specialty	MillerCoors
168	64286020024	Founders All Day IPA 6/12B	0.000	\$0.00	\$0.00	Micro	Micro Breweries
169	3410051607	Leinenkugel Seasonal Shandy 12/12B	0.000	\$0.00	\$0.00	Specialty	MillerCoors
170	8769200149	Angry Orchard Green Apple 6/12B	0.000	\$0.00	\$0.00	Cider	Boston Beer
171	85909300243	SixPoint Bengali 6/12C	0.000	\$0.00	\$0.00	Micro	Micro Breweries
172	1820024008	Stella Artois Gft Pk 1/25B	0.000	\$0.00	\$0.00	Imports	Anheuser-Busch InBev
173	1820023984	Oculito 6/12B	0.000	\$0.00	\$0.00	Micro	Anheuser-Busch InBev
174	1820025005	Budweiser Select 1/25C	0.000	\$0.00	\$0.00	Premium	Anheuser-Busch InBev
175	85998900516	Greenport Harbor Otherside IPA 6/12B	0.000	\$0.00	\$0.00	Micro	Micro Breweries
176	9200002013	Small Town Not Your Fathers Gngr 6/1...	0.000	\$0.00	\$0.00	Micro	Pabst
177	1820002992	O'Doul's Amber 6/12B	0.000	\$0.00	\$0.00	Non Alcohol	Anheuser-Busch InBev
178	7089701331	Fosters Lager 1/25C	0.000	\$0.00	\$0.00	Imports	MillerCoors
179	7199009561	Blue Moon White IPA 6/12B	0.000	\$0.00	\$0.00	Specialty	MillerCoors
180	79837312125	Magic Hat Variety Pack 12/12B	0.000	\$0.00	\$0.00	Micro	North American Breweri...
181	8769259102	Samuel Adams Latitude 48 IPA 6/12B	0.000	\$0.00	\$0.00	Micro	Boston Beer
182	7289000174	Heineken 1/169MBR	0.000	\$0.00	\$0.00	Imports	Heineken USA
183	1820020998	Bud Light 8/16AL	0.000	\$0.00	\$0.00	Premium	Anheuser-Busch InBev
184	7199076400	George Killian's Irish Red 12/12B	0.000	\$0.00	\$0.00	Specialty	MillerCoors
185	60940872979	Port Jeff Party Boat IPA 6/12C	0.000	\$0.00	\$0.00	Micro	Micro Breweries
186	8769275102	Twisted Tea Half & Half 6/12B	0.000	\$0.00	\$0.00	FMB	Boston Beer
187	7248002403	Schaefer 12/12C	0.000	\$0.00	\$0.00	Sub Premium	Pabst
188	4182700012	Harpoon Mix Pack 12/12B	0.000	\$0.00	\$0.00	Micro	Harpoon
189	88573700002	Shiner Family Reunion Mix 6/12B	0.000	\$0.00	\$0.00	Micro	Gambrinus

UNALLOCATED ITEMS/OPTIONAL ITEMS

5956.psa

UNALLOCATED SKU REPORT

	UPC	NAME	MVMT	Profit	Sales	Category	Manufacturer
190	8378322812	Sierra Nevada Seasonal 12/12B	0.000	\$0.00	\$0.00	Micro	Sierra Nevada
191	8797502650	Sapporo Draft 1/22C	0.000	\$0.00	\$0.00	Imports	Import
192	1820079047	O'Doul's 12/12C	0.000	\$0.00	\$0.00	Non Alcohol	Anheuser-Busch InBev
193	63848900137	Dogfish Head Namaste 6/12B	0.000	\$0.00	\$0.00	Micro	Micro Breweries
194	63625177612	Stone IPA 6/12B	0.000	\$0.00	\$0.00	Micro	Micro Breweries
195	4257205715	Clausthaler NA 6/12B	0.000	\$0.00	\$0.00	Non Alcohol	Import
196	8834510151	Strongbow Gold Hard Cider 6/11B	0.000	\$0.00	\$0.00	Cider	Heineken USA
197	7289000158	Heineken Premium Light 6/12B	0.000	\$0.00	\$0.00	Imports	Heineken USA
198	8248812700	Becks NA 6/12B	0.000	\$0.00	\$0.00	Non Alcohol	Anheuser-Busch InBev
199	7289000020	Heineken 12/12C	0.000	\$0.00	\$0.00	Imports	Heineken USA
200	8992495432	Yuengling Black & Tan 6/12B	0.000	\$0.00	\$0.00	Premium	DG Yuengling & Sons
201	8992429386	Yuengling Black & Tan 12/12B	0.000	\$0.00	\$0.00	Premium	DG Yuengling & Sons
202	68174541116	Blue Point Toasted Lager 4/16C	0.000	\$0.00	\$0.00	Micro	Anheuser-Busch InBev
203	4182700146	Harpoon Seasonal 6/12B	0.000	\$0.00	\$0.00	Micro	Harpoon
204	3410008755	Redd's Wicked Black Cherry 12/10C	0.000	\$0.00	\$0.00	Specialty	MillerCoors
205	1820000031	Natural Light 6/12C	0.000	\$0.00	\$0.00	Sub Premium	Anheuser-Busch InBev
206	3410008722	Redd's Apple Ale 12/12B	0.000	\$0.00	\$0.00	Specialty	MillerCoors
207	1820018993	Bud Light Platinum 6/12B	0.000	\$0.00	\$0.00	Specialty	Anheuser-Busch InBev
208	9200002009	Small Town Not Your Fathers RtBr 6/1...	0.000	\$0.00	\$0.00	Micro	Pabst
209	2210000004	Pabst 1/24C	0.000	\$0.00	\$0.00	Sub Premium	Pabst
210	78036980012	Shipyards Seasonal Ale 6/12B	0.000	\$0.00	\$0.00	Micro	Micro Breweries
211	7231163011	Dos Equis Ambar 6/12B	0.000	\$0.00	\$0.00	Imports	Heineken USA
212	9425400015	Post Road Pumpkin Ale 6/12B	0.000	\$0.00	\$0.00	Micro	Micro Breweries
213	7199030078	Coors Light 18/12B	0.000	\$0.00	\$0.00	Premium	MillerCoors
214	1820022992	Bud Light Lime-A-Rita Seasonal 12/8C	0.000	\$0.00	\$0.00	FMB	Anheuser-Busch InBev
215	1820000016	Budweiser 6/12C	0.000	\$0.00	\$0.00	Premium	Anheuser-Busch InBev
216	3410008749	Redd's Wicked Mango 12/10C	0.000	\$0.00	\$0.00	Specialty	MillerCoors
217	8769282102	Angry Orchard Crisp Apple 6/12B	0.000	\$0.00	\$0.00	Cider	Boston Beer
218	85998900504	Greenport Harbor Harbor Ale 6/12B	0.000	\$0.00	\$0.00	Micro	Micro Breweries
219	7167084200	Saranac Adirondack Trail Mix 6/12B	0.000	\$0.00	\$0.00	Micro	FX Matt
220	1820018992	Bud Light Platinum 12/12B	0.000	\$0.00	\$0.00	Specialty	Anheuser-Busch InBev
221	3410008813	Miller Fortune 12/12B	0.000	\$0.00	\$0.00	Specialty	MillerCoors
222	68174511130	Blue Point Blueberry Ale 6/12B	0.000	\$0.00	\$0.00	Micro	Anheuser-Busch InBev
223	7289010016	Amstel Light 12/12B	0.000	\$0.00	\$0.00	Imports	Heineken USA
224	83972800411	Big Flats Lager Beer 6/12C	0.000	\$0.00	\$0.00	Sub Premium	Micro Breweries
225	3410031602	Milwaukee's Best 12/12C	0.000	\$0.00	\$0.00	Sub Premium	MillerCoors
226	1820012982	Land Shark Lager 6/12B	0.000	\$0.00	\$0.00	Specialty	Anheuser-Busch InBev
227	1820021991	Stella Artois Cidre 4/12B	0.000	\$0.00	\$0.00	Cider	Anheuser-Busch InBev
228	3410049805	Leinenkugel Sunset Wheat Ale 6/12B	0.000	\$0.00	\$0.00	Specialty	MillerCoors