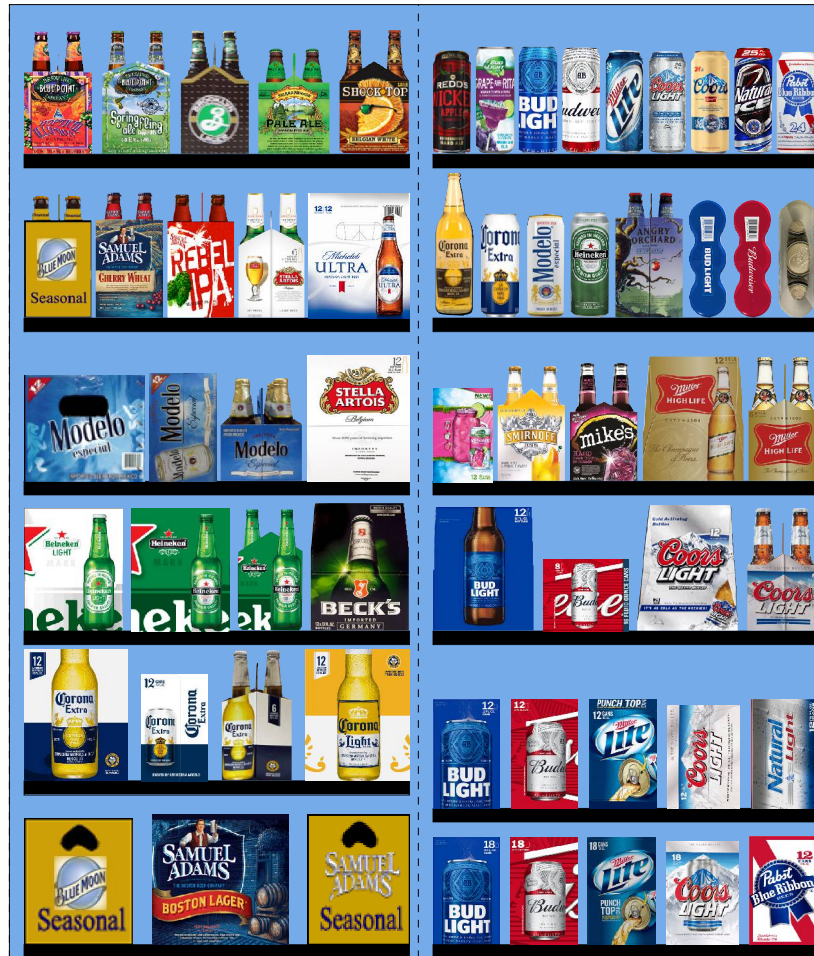


6334.psa For Validation Purposes Only NOT FINAL



Printed: 4/14/2016

Traffic Flow Left-right

POG: 6334.psa



POG Size: 5'0.00

Segments 1 - 2 of 2

Page: 1

## SCHEMATIC BACKING REPORT

6334.psa

### Planogram: 6334.psa

Segment #1 : Shelf #6 DEPTH: 36 in WIDTH: 28 in DISTANCE FROM TOP OF BASE SHELF TO BOTTOM OF SHELF: 0.00 in

POS	# FAC	UPC	ID	NAME	CASES	CAPACITY	UNITS HIGH	DOS	MVMT
23	1	7199009536	7199009536	Blue Moon Seasonal 12/12B	1.5	3	1	42.3	0.5
24	1	8769210014	8769210014	Samuel Adams Boston Lgr 12/12B	2.0	4	1	28.4	1.0
25	1	8769201103	8769201103	Samuel Adams Seasonal 12/12B	1.5	3	1	31.6	0.7

Segment #1 : Shelf #5 DEPTH: 36 in WIDTH: 28 in DISTANCE FROM TOP OF BASE SHELF TO BOTTOM OF SHELF: 12.00 in

POS	# FAC	UPC	ID	NAME	CASES	CAPACITY	UNITS HIGH	DOS	MVMT
19	1	8066095615	8066095615	Corona Extra 12/12B	1.5	3	1	1.5	14.0
20	1	8066095695	8066095695	Corona Extra 12/12C	1.5	3	1	68.2	0.3
21	1	8066095605	8066095605	Corona Extra 6/12B	1.0	4	1	61.4	0.5
22	1	8066095675	8066095675	Corona Light 12/12B	1.5	3	1	6.8	3.1

Segment #1 : Shelf #4 DEPTH: 36 in WIDTH: 28 in DISTANCE FROM TOP OF BASE SHELF TO BOTTOM OF SHELF: 23.00 in

POS	# FAC	UPC	ID	NAME	CASES	CAPACITY	UNITS HIGH	DOS	MVMT
15	1	7289000159	7289000159	Heineken Premium Light 12/12B	1.5	3	1	3.0	7.1
16	1	7289000016	7289000016	Heineken 12/12B	1.5	3	1	1.6	13.4
17	1	7289000011	7289000011	Heineken 6/12B	1.0	4	1	129.0	0.2
18	1	8248812300	8248812300	Becks 12/12B	1.5	3	1	7.6	2.8

Segment #1 : Shelf #3 DEPTH: 36 in WIDTH: 28 in DISTANCE FROM TOP OF BASE SHELF TO BOTTOM OF SHELF: 34.00 in

POS	# FAC	UPC	ID	NAME	CASES	CAPACITY	UNITS HIGH	DOS	MVMT
11	1	8066095757	8066095757	Modelo 12/12B	1.0	2	1	0.0	0.0
12	1	8066095715	8066095715	Modelo 12/12C	1.5	3	1	25.8	0.8
13	1	8066095765	8066095765	Modelo 6/12B	1.0	4	1	0.0	0.0
14	1	78615000014	78615000014	Stella Artois 12/11B	1.5	3	1	10.4	2.0

Segment #1 : Shelf #2 DEPTH: 36 in WIDTH: 28 in DISTANCE FROM TOP OF BASE SHELF TO BOTTOM OF SHELF: 46.00 in

POS	# FAC	UPC	ID	NAME	CASES	CAPACITY	UNITS HIGH	DOS	MVMT
6	1	7199009532	7199009532	Blue Moon Seasonal 6/12B	1.0	4	1	30.3	0.9
7	1	8769227102	8769227102	Samuel Adams Cherry Wht 6/12B	1.0	4	1	24.3	1.2
8	1	8769200127	8769200127	Samuel Adams Rebel IPA 6/12B	1.0	4	1	40.5	0.7
9	1	78615000001	78615000001	Stella Artois 6/11B	1.0	4	1	0.0	0.0
10	1	1820005990	1820005990	Michelob Ultra 12/12B	1.5	3	1	8.8	2.4

Segment #1 : Shelf #1 DEPTH: 36 in WIDTH: 28 in DISTANCE FROM TOP OF BASE SHELF TO BOTTOM OF SHELF: 58.00 in

POS	# FAC	UPC	ID	NAME	CASES	CAPACITY	UNITS HIGH	DOS	MVMT
1	1	68174511102	68174511102	Blue Point Hoptical Illusion 6/12B	1.0	4	1	0.0	0.0
2	1	68174511118	68174511118	Blue Point Seasonal 6/12B	1.0	4	1	37.9	0.7
3	1	3061300001	3061300001	Brooklyn Lager 6/12B	1.0	4	1	30.3	0.9
4	1	8378337521	8378337521	Sierra Nevada Pale Ale 6/12B	1.0	4	1	21.5	1.3
5	1	1820013986	1820013986	Shock Top Belgian White Ale 6/12B	1.0	4	1	30.3	0.9

Segment #2 : Shelf #6 DEPTH: 36 in WIDTH: 28 in DISTANCE FROM TOP OF BASE SHELF TO BOTTOM OF SHELF: 0.00 in

POS	# FAC	UPC	ID	NAME	CASES	CAPACITY	UNITS HIGH	DOS	MVMT
57	1	1820053218	1820053218	Bud Light 18/12C	2.0	2	1	4.4	3.2
58	1	1820011218	1820011218	Budweiser 18/12C	2.0	2	1	6.1	2.3

## SCHEMATIC BACKING REPORT

6334.psa

59	1	3410057340	3410057340	Miller Lite 18/12C	2.0	2	1	7.6	1.8
60	1	7199030017	7199030017	Coors Light 18/12C	2.0	2	1	2.2	6.2
61	1	2210000170	2210000170	Pabst 12/12C	1.5	3	1	21.8	1.0

Segment #2 : Shelf #5 DEPTH: 36 in WIDTH: 28 in DISTANCE FROM TOP OF BASE SHELF TO BOTTOM OF SHELF: 10.00 in

POS	# FAC	UPC	ID	NAME	CASES	CAPACITY	UNITS HIGH	DOS	MVMT
52	1	1820053047	1820053047	Bud Light 12/12C	1.5	3	1	5.2	4.0
53	1	1820011047	1820011047	Budweiser 12/12C	1.5	3	1	8.1	2.6
54	1	3410057636	3410057636	Miller Lite 12/12C	1.5	3	1	10.9	1.9
55	1	7199000048	7199000048	Coors Light 12/12C	1.5	3	1	12.1	1.7
56	1	1820015047	1820015047	Natural Light 12/12C	1.5	3	1	17.3	1.2

Segment #2 : Shelf #4 DEPTH: 36 in WIDTH: 28 in DISTANCE FROM TOP OF BASE SHELF TO BOTTOM OF SHELF: 23.00 in

POS	# FAC	UPC	ID	NAME	CASES	CAPACITY	UNITS HIGH	DOS	MVMT
48	1	1820000769	1820000769	Bud Light 12/12B	1.5	3	1	6.4	3.3
49	1	1820008981	1820008981	Budweiser 8/16C	1.0	3	1	0.0	0.0
50	1	7199030069	7199030069	Coors Light 12/12B	1.5	3	1	28.8	0.7
51	1	7199030005	7199030005	Coors Light 6/12B	1.0	4	1	22.7	1.2

Segment #2 : Shelf #3 DEPTH: 36 in WIDTH: 28 in DISTANCE FROM TOP OF BASE SHELF TO BOTTOM OF SHELF: 34.00 in

POS	# FAC	UPC	ID	NAME	CASES	CAPACITY	UNITS HIGH	DOS	MVMT
43	1	1820022992	1820022992	Bud Light Lime-A-Rita Seasonal 12/8C	1.5	3	1	24.8	0.8
44	1	8200075748	8200075748	Smirnoff Ice Screwdriver 6/11B	1.0	4	1	26.0	1.1
45	1	63598506744	63598506744	Mikes Hard Black Cherry Lemonade 6/11B	1.0	4	1	36.4	0.8
46	1	3410001509	3410001509	Miller High Life 12/12B	1.5	3	1	19.4	1.1
47	1	3410001505	3410001505	Miller High Life 6/12B	1.0	4	1	0.0	0.0

Segment #2 : Shelf #2 DEPTH: 36 in WIDTH: 28 in DISTANCE FROM TOP OF BASE SHELF TO BOTTOM OF SHELF: 46.00 in

POS	# FAC	UPC	ID	NAME	CASES	CAPACITY	UNITS HIGH	DOS	MVMT
35	1	8066095641	8066095641	Corona Extra 1/24B	0.9	11	1	0.0	0.0
36	1	8066095643	8066095643	Corona Extra 1/24C	1.0	12	1	0.0	0.0
37	1	8066095721	8066095721	Modelo 1/24C	1.0	12	1	0.0	0.0
38	1	7289000119	7289000119	Heineken 1/24C	1.0	12	1	0.0	0.0
39	1	8769282102	8769282102	Angry Orchard Crisp Apple 6/12B	1.0	4	1	14.4	1.9
40	1	1820021986	1820021986	Bud Light 3/25C	0.8	4	1	30.3	0.9
41	1	1820021985	1820021985	Budweiser 3/25C	0.8	4	1	16.5	1.7
42	1	7199030120	7199030120	Coors Light 3/24C	0.8	4	1	26.5	1.1

Segment #2 : Shelf #1 DEPTH: 36 in WIDTH: 28 in DISTANCE FROM TOP OF BASE SHELF TO BOTTOM OF SHELF: 58.00 in

POS	# FAC	UPC	ID	NAME	CASES	CAPACITY	UNITS HIGH	DOS	MVMT
26	1	3410000323	3410000323	Redd's Wicked Apple 1/24C	1.0	12	1	0.0	0.0
27	1	1820025833	1820025833	Bud Light Lime Grape-A-Rita 1/25C	0.8	12	1	0.0	0.0
28	1	1820025001	1820025001	Bud Light 1/25C	0.8	12	1	53.0	1.6
29	1	1820025000	1820025000	Budweiser 1/25C	0.8	12	1	86.1	1.0
30	1	3410000355	3410000355	Miller Lite 1/24C	1.0	12	1	0.0	0.0
31	1	7199030065	7199030065	Coors Light 1/24C	1.0	12	1	84.0	1.0
32	1	7199010071	7199010071	Coors 1/24C	1.0	12	1	73.7	1.1
33	1	1820025008	1820025008	Natural Ice 1/25C	0.8	12	1	0.0	0.0
34	1	2210000004	2210000004	Pabst 1/24C	1.0	12	1	0.0	0.0

SKUs on Planogram: 61

**UNALLOCATED ITEMS/OPTIONAL ITEMS**

6334.psa

**UNALLOCATED SKU REPORT**

	<b>UPC</b>	<b>NAME</b>	<b>MVMT</b>	<b>Profit</b>	<b>Sales</b>	<b>Category</b>	<b>Manufacturer</b>
1	1820000964	Natural Ice 12/12C	0.846	\$0.00	\$0.00	Sub Premium	Anheuser-Busch InBev
2	1820000834	Budweiser 6/12B	0.734	\$0.00	\$0.00	Premium	Anheuser-Busch InBev
3	7199009511	Blue Moon Belgian White Ale 6/12B	0.615	\$0.00	\$0.00	Specialty	MillerCoors
4	79837312602	Magic Hat #9 6/12B	0.538	\$0.00	\$0.00	Micro	North American Breweri...
5	63848900029	Dogfish Head 60 Minute IPA 6/12B	0.534	\$0.00	\$0.00	Micro	Micro Breweries
6	8769230050	Samuel Adams Seasonal 6/12B	0.528	\$0.00	\$0.00	Micro	Boston Beer
7	3410051605	Leinenkugel Seasonal Shandy 6/12B	0.462	\$0.00	\$0.00	Specialty	MillerCoors
8	8769200004	Samuel Adams Seasonal Select 6/12B	0.462	\$0.00	\$0.00	Micro	Boston Beer
9	8992427896	Yuengling Traditional Lager 12/12B	0.462	\$0.00	\$0.00	Premium	DG Yuengling & Sons
10	1820000771	Budweiser 12/12B	0.452	\$0.00	\$0.00	Premium	Anheuser-Busch InBev
11	8769200129	Samuel Adams Rebel IPA 12/12B	0.385	\$0.00	\$0.00	Micro	Boston Beer
12	63598510062	Mikes Hard Lemonade 6/11B	0.385	\$0.00	\$0.00	FMB	Mark Anthony Brands
13	8769229103	Samuel Adams Ssnl Variety-Mix Pk 12/...	0.361	\$0.00	\$0.00	Micro	Boston Beer
14	1820024001	Stella Artois Cidre 6/12B	0.339	\$0.00	\$0.00	Cider	Anheuser-Busch InBev
15	7199009516	Blue Moon Belgian White Ale 12/12B	0.339	\$0.00	\$0.00	Specialty	MillerCoors
16	8066095625	Corona Light 6/12B	0.330	\$0.00	\$0.00	Imports	Crown Imports LLC
17	8200072754	Smirnoff Ice Raspberry 6/11B	0.324	\$0.00	\$0.00	FMB	Diageo
18	63598560611	Mikes Hard Cranberry Lemonade 6/11B	0.308	\$0.00	\$0.00	FMB	Mark Anthony Brands
19	8769210012	Samuel Adams Boston Lgr 6/12B	0.297	\$0.00	\$0.00	Micro	Boston Beer
20	1820014991	Bud Light Lime 6/12B	0.277	\$0.00	\$0.00	Specialty	Anheuser-Busch InBev
21	3410057509	Miller Lite 12/12B	0.263	\$0.00	\$0.00	Premium	MillerCoors
22	63598525948	Mikes HARDER BIK Cherry Lemonade ...	0.250	\$0.00	\$0.00	FMB	Mark Anthony Brands
23	8857333101	Shiner Bock 6/12B	0.231	\$0.00	\$0.00	Micro	Gambrinus
24	68174511112	Blue Point Toasted Lager 6/12B	0.219	\$0.00	\$0.00	Micro	Anheuser-Busch InBev
25	1820018992	Bud Light Platinum 12/12B	0.215	\$0.00	\$0.00	Specialty	Anheuser-Busch InBev
26	1820020993	Bud Light Lime Straw-Ber-Rita 12/8C	0.194	\$0.00	\$0.00	FMB	Anheuser-Busch InBev
27	1820019987	Bud Light Lime-A-Rita 12/8C	0.185	\$0.00	\$0.00	FMB	Anheuser-Busch InBev
28	1820015983	Bud Light Lime 12/12C SC	0.170	\$0.00	\$0.00	Specialty	Anheuser-Busch InBev
29	1820022988	Bud Light Lime Raz-Ber-Rita 12/8C	0.154	\$0.00	\$0.00	FMB	Anheuser-Busch InBev
30	3061300071	Brooklyn Variety Pack 12/12B	0.154	\$0.00	\$0.00	Micro	Micro Breweries
31	1820016989	Shock Top Raspberry Wheat 6/12B	0.154	\$0.00	\$0.00	Specialty	Anheuser-Busch InBev
32	7167082201	Saranac Our Adirondack Lager 6/12B	0.154	\$0.00	\$0.00	Micro	FX Matt
33	3410008722	Redd's Apple Ale 12/12B	0.154	\$0.00	\$0.00	Specialty	MillerCoors
34	7199009554	Blue Moon Brewmaster's Sampler 12/1...	0.149	\$0.00	\$0.00	Specialty	MillerCoors
35	8769283102	Twisted Tea 6/12B	0.077	\$0.00	\$0.00	FMB	Boston Beer
36	1820006991	Michelob Ultra 12/12C SC	0.077	\$0.00	\$0.00	Specialty	Anheuser-Busch InBev
37	8769200269	Samuel Adams Rebel Rouser 6/12B	0.077	\$0.00	\$0.00	Micro	Boston Beer
38	3061300053	Brooklyn Seasonal 6/12B	0.073	\$0.00	\$0.00	Micro	Micro Breweries
39	1820014990	Bud Light Lime 12/12B	0.062	\$0.00	\$0.00	Specialty	Anheuser-Busch InBev
40	1820017993	Shock Top Seasonal 6/12B	0.032	\$0.00	\$0.00	Specialty	Anheuser-Busch InBev
41	1820022989	Bud Light Lime Mang-O-Rita 12/8C	0.021	\$0.00	\$0.00	FMB	Anheuser-Busch InBev
42	63598525945	Mikes HARDER Lemonade 12/8C	0.020	\$0.00	\$0.00	FMB	Mark Anthony Brands
43	4182700076	Harpoon IPA 6/12B	0.019	\$0.00	\$0.00	Micro	Harpoon
44	3410008813	Miller Fortune 12/12B	0.012	\$0.00	\$0.00	Specialty	MillerCoors
45	68174511130	Blue Point Blueberry Ale 6/12B	0.009	\$0.00	\$0.00	Micro	Anheuser-Busch InBev
46	63598512998	Mikes Hard Variety Pack 12/11B	0.007	\$0.00	\$0.00	FMB	Mark Anthony Brands
47	3410031602	Milwaukee's Best 12/12C	0.000	\$0.00	\$0.00	Sub Premium	MillerCoors
48	63598506822	Mikes Hard Light Lemonade 6/11B	0.000	\$0.00	\$0.00	FMB	Mark Anthony Brands
49	8382012393	Guinness Extra Stout 6/11B	0.000	\$0.00	\$0.00	Imports	Diageo
50	8382056793	Red Stripe 6/12B	0.000	\$0.00	\$0.00	Imports	Diageo
51	7143934450	Rolling Rock 12/12C	0.000	\$0.00	\$0.00	Sub Premium	Anheuser-Busch InBev
52	7199030104	Coors Light 9/16AL	0.000	\$0.00	\$0.00	Premium	MillerCoors
53	7089718331	Fosters Premium Ale 1/25C	0.000	\$0.00	\$0.00	Imports	MillerCoors
54	81760601000	Captain Lawrence Pale Ale 6/12B	0.000	\$0.00	\$0.00	Micro	Micro Breweries
55	1820005989	Michelob Ultra 6/12B	0.000	\$0.00	\$0.00	Specialty	Anheuser-Busch InBev
56	1820019991	Shock Top Seasonal 12/12B	0.000	\$0.00	\$0.00	Specialty	Anheuser-Busch InBev
57	1820023984	Oculto 6/12B	0.000	\$0.00	\$0.00	Micro	Anheuser-Busch InBev
58	8769259102	Samuel Adams Latitude 48 IPA 6/12B	0.000	\$0.00	\$0.00	Micro	Boston Beer
59	78624311990	Flying Dog Raging Btch Belgn Ale 6/12B	0.000	\$0.00	\$0.00	Micro	Micro Breweries
60	79837312125	Magic Hat Variety Pack 12/12B	0.000	\$0.00	\$0.00	Micro	North American Breweri...
61	8378337512	Sierra Nevada Pale Ale 12/12B	0.000	\$0.00	\$0.00	Micro	Sierra Nevada
62	7289010016	Amstel Light 12/12B	0.000	\$0.00	\$0.00	Imports	Heineken USA
63	9200002000	Small Town Not Your Fathers RtBr 6/1...	0.000	\$0.00	\$0.00	Micro	Pabst

**UNALLOCATED ITEMS/OPTIONAL ITEMS**

6334.psa

**UNALLOCATED SKU REPORT**

	<b>UPC</b>	<b>NAME</b>	<b>MVMT</b>	<b>Profit</b>	<b>Sales</b>	<b>Category</b>	<b>Manufacturer</b>
64	7199048004	Keystone Light 12/12C	0.000	\$0.00	\$0.00	Sub Premium	MillerCoors
65	8200072385	Smirnoff Ice 6/11B	0.000	\$0.00	\$0.00	FMB	Diageo
66	8382010401	Guinness Draught 6/11B	0.000	\$0.00	\$0.00	Imports	Diageo
67	1820021979	Budweiser 8/16AL	0.000	\$0.00	\$0.00	Premium	Anheuser-Busch InBev
68	8382012418	Guinness Nitro IPA 6/11C	0.000	\$0.00	\$0.00	Imports	
69	79837312606	Magic Hat Seasonal 6/12B	0.000	\$0.00	\$0.00	Micro	North American Breweri...
70	85114800500	Great South Bay Blood Orange 6/12B	0.000	\$0.00	\$0.00	Micro	Micro Breweries
71	1820096721	Michelob Ultra 18/12C SC	0.000	\$0.00	\$0.00	Specialty	Anheuser-Busch InBev
72	72383000009	Lagunitas IPA 6/12B	0.000	\$0.00	\$0.00	Micro	Micro Breweries
73	1820000106	Bud Light 6/12C	0.000	\$0.00	\$0.00	Premium	Anheuser-Busch InBev
74	8834510005	Newcastle Brown Ale 6/12B	0.000	\$0.00	\$0.00	Imports	Heineken USA
75	7199000008	Coors Light 6/12C	0.000	\$0.00	\$0.00	Premium	MillerCoors
76	1820020998	Bud Light 8/16AL	0.000	\$0.00	\$0.00	Premium	Anheuser-Busch InBev
77	70277008101	Omission Lager 6/12B	0.000	\$0.00	\$0.00	Micro	Anheuser-Busch InBev
78	85909300244	SixPoint The Crisp 6/12C	0.000	\$0.00	\$0.00	Micro	Micro Breweries
79	8992420111	Yuengling Light Lager 6/12B	0.000	\$0.00	\$0.00	Premium	DG Yuengling & Sons
80	8992427891	Yuengling Traditional Lager 6/12B	0.000	\$0.00	\$0.00	Premium	DG Yuengling & Sons
81	8992429386	Yuengling Black & Tan 12/12B	0.000	\$0.00	\$0.00	Premium	DG Yuengling & Sons
82	4182700712	Harpoon IPA 12/12B	0.000	\$0.00	\$0.00	Micro	Harpoon
83	3410057505	Miller Lite 6/12B	0.000	\$0.00	\$0.00	Premium	MillerCoors
84	8382010403	Guinness Draught 12/11B	0.000	\$0.00	\$0.00	Imports	Diageo
85	3410008730	Redd's Strawberry Ale 6/12B	0.000	\$0.00	\$0.00	Specialty	MillerCoors
86	7289000478	Heineken 1/22B	0.000	\$0.00	\$0.00	Imports	Heineken USA
87	1497450009	Woodchuck Amber 6/12B	0.000	\$0.00	\$0.00	Cider	Vermont Hard Cider Co...
88	8378333100	Sierra Nevada Torpedo Extra IPA 6/12B	0.000	\$0.00	\$0.00	Micro	Sierra Nevada
89	8248812345	Becks 6/12B	0.000	\$0.00	\$0.00	Imports	Anheuser-Busch InBev
90	85909300242	SixPoint Sweet Action 6/12C	0.000	\$0.00	\$0.00	Micro	Micro Breweries
91	88715100213	Coney Island Hard Root Beer 6/12B	0.000	\$0.00	\$0.00	Micro	Boston Beer
92	1820000833	Bud Light 6/12B	0.000	\$0.00	\$0.00	Premium	Anheuser-Busch InBev
93	8992495432	Yuengling Black & Tan 6/12B	0.000	\$0.00	\$0.00	Premium	DG Yuengling & Sons
94	7199076400	George Killian's Irish Red 12/12B	0.000	\$0.00	\$0.00	Specialty	MillerCoors
95	88715100195	Coney Island Overpass IPA 6/12B	0.000	\$0.00	\$0.00	Micro	Boston Beer
96	8769230030	Samuel Adams Boston Ale 6/12B	0.000	\$0.00	\$0.00	Micro	Boston Beer
97	18195400002	Peroni Nastro Azzuro 6/12B	0.000	\$0.00	\$0.00	Imports	MillerCoors
98	8378316000	Sierra Nevada 4 Way IPA Vrtly Pck 12/...	0.000	\$0.00	\$0.00	Micro	Sierra Nevada
99	1820021998	Shock Top Honeycrisp Apple Wheat 6/...	0.000	\$0.00	\$0.00	Specialty	Anheuser-Busch InBev
100	8248812700	Becks NA 6/12B	0.000	\$0.00	\$0.00	Non Alcohol	Anheuser-Busch InBev
101	7289000174	Heineken 1/169MBR	0.000	\$0.00	\$0.00	Imports	Heineken USA
102	8992423040	Yuengling Light Lager 12/12B	0.000	\$0.00	\$0.00	Premium	DG Yuengling & Sons
103	8382023473	Harp Lager 6/12B	0.000	\$0.00	\$0.00	Imports	Diageo
104	1820025505	Bud Light Lime Straw-Ber-Rita 1/25C	0.000	\$0.00	\$0.00	FMB	Anheuser-Busch InBev
105	64286020024	Founders All Day IPA 6/12B	0.000	\$0.00	\$0.00	Micro	Micro Breweries
106	64286090024	Founders All Day IPA 15/12C	0.000	\$0.00	\$0.00	Micro	Micro Breweries
107	63625177612	Stone IPA 6/12B	0.000	\$0.00	\$0.00	Micro	Micro Breweries
108	7248002403	Schaefer 12/12C	0.000	\$0.00	\$0.00	Sub Premium	Pabst
109	1820012982	Land Shark Lager 6/12B	0.000	\$0.00	\$0.00	Specialty	Anheuser-Busch InBev
110	8769275102	Twisted Tea Half & Half 6/12B	0.000	\$0.00	\$0.00	FMB	Boston Beer
111	8066095401	Coronita Extra 6/7B	0.000	\$0.00	\$0.00	Imports	Crown Imports LLC
112	3410008755	Redd's Wicked Black Cherry 12/10C	0.000	\$0.00	\$0.00	Specialty	MillerCoors
113	7289010011	Amstel Light 6/12B	0.000	\$0.00	\$0.00	Imports	Heineken USA
114	3410008716	Redd's Apple Ale 6/12B	0.000	\$0.00	\$0.00	Specialty	MillerCoors
115	8834510151	Strongbow Gold Hard Cider 6/11B	0.000	\$0.00	\$0.00	Cider	Heineken USA
116	3410051607	Leinenkugel Seasonal Shandy 12/12B	0.000	\$0.00	\$0.00	Specialty	MillerCoors
117	8769200109	Samuel Adams Seasonal 12/12C	0.000	\$0.00	\$0.00	Micro	Boston Beer
118	63598506074	Mikes Hard Seasonal 6/11B	0.000	\$0.00	\$0.00	FMB	Mark Anthony Brands
119	8797502650	Sapporo Draft 1/22C	0.000	\$0.00	\$0.00	Imports	Import
120	3410057023	Miller Lite 9/16AL	0.000	\$0.00	\$0.00	Premium	MillerCoors
121	1820015981	Shock Top Belgian White Ale 12/12B	0.000	\$0.00	\$0.00	Specialty	Anheuser-Busch InBev
122	8378322812	Sierra Nevada Seasonal 12/12B	0.000	\$0.00	\$0.00	Micro	Sierra Nevada
123	68715190007	Southampton Double White Ale 6/12B	0.000	\$0.00	\$0.00	Micro	Micro Breweries
124	8382012360	Guinness Draught 4/15C	0.000	\$0.00	\$0.00	Imports	Diageo
125	1820079047	O'Doul's 12/12C	0.000	\$0.00	\$0.00	Non Alcohol	Anheuser-Busch InBev
126	7289000188	Heineken Premium Light 12/12C	0.000	\$0.00	\$0.00	Imports	Heineken USA

**UNALLOCATED ITEMS/OPTIONAL ITEMS**

6334.psa

**UNALLOCATED SKU REPORT**

	<b>UPC</b>	<b>NAME</b>	<b>MVMT</b>	<b>Profit</b>	<b>Sales</b>	<b>Category</b>	<b>Manufacturer</b>
127	9200002013	Small Town Not Your Fathers Gngr 6/1...	0.000	\$0.00	\$0.00	Micro	Pabst
128	1820011985	Redbridge Lager 6/12B	0.000	\$0.00	\$0.00	Specialty	Anheuser-Busch InBev
129	8769200017	Angry Orchard Variety Pack 12/12B	0.000	\$0.00	\$0.00	Cider	Boston Beer
130	4182700146	Harpoon Seasonal 6/12B	0.000	\$0.00	\$0.00	Micro	Harpoon
131	7231163011	Dos Equis Ambar 6/12B	0.000	\$0.00	\$0.00	Imports	Heineken USA
132	3410000340	Redd's Variety Pack 12/12B	0.000	\$0.00	\$0.00	Specialty	MillerCoors
133	7199009561	Blue Moon White IPA 6/12B	0.000	\$0.00	\$0.00	Specialty	MillerCoors
134	7289000000	Heineken 6/12C	0.000	\$0.00	\$0.00	Imports	Heineken USA
135	8382012368	Guinness Draught 8/15C	0.000	\$0.00	\$0.00	Imports	Diageo
136	64286020007	Founders Dirty Bastard 6/12B	0.000	\$0.00	\$0.00	Micro	Micro Breweries
137	8769200033	Angry Orchard Crisp Apple 12/12B	0.000	\$0.00	\$0.00	Cider	Boston Beer
138	86273700001	Montauk Summer Ale 6/12C	0.000	\$0.00	\$0.00	Micro	Micro Breweries
139	1820012998	Land Shark Lager 12/12B	0.000	\$0.00	\$0.00	Specialty	Anheuser-Busch InBev
140	7167007106	Saranac Twelve Beers 12/12B	0.000	\$0.00	\$0.00	Micro	FX Matt
141	4257205715	Clausthaler NA 6/12B	0.000	\$0.00	\$0.00	Non Alcohol	Import
142	7199070002	George Killian's Irish Red 6/12B	0.000	\$0.00	\$0.00	Specialty	MillerCoors
143	1820024008	Stella Artois Gft Pk 1/25B	0.000	\$0.00	\$0.00	Imports	Anheuser-Busch InBev
144	78615000036	Hoegaarden 6/11B	0.000	\$0.00	\$0.00	Imports	Anheuser-Busch InBev
145	1820018993	Bud Light Platinum 6/12B	0.000	\$0.00	\$0.00	Specialty	Anheuser-Busch InBev
146	8200072751	Smirnoff Ice Green Apple 6/11B	0.000	\$0.00	\$0.00	FMB	Diageo
147	1820002992	O'Doul's Amber 6/12B	0.000	\$0.00	\$0.00	Non Alcohol	Anheuser-Busch InBev
148	7231133140	Dos Equis Ambar 12/12B	0.000	\$0.00	\$0.00	Imports	Heineken USA
149	7289000020	Heineken 12/12C	0.000	\$0.00	\$0.00	Imports	Heineken USA
150	8382018132	Guinness Blonde 6/12B	0.000	\$0.00	\$0.00	Imports	Diageo
151	9425400015	Post Road Pumpkin Ale 6/12B	0.000	\$0.00	\$0.00	Micro	Micro Breweries
152	1820000016	Budweiser 6/12C	0.000	\$0.00	\$0.00	Premium	Anheuser-Busch InBev
153	7143934806	Rolling Rock 6/12B	0.000	\$0.00	\$0.00	Sub Premium	Anheuser-Busch InBev
154	8769200079	Angry Orchard Seasonal 6/12B	0.000	\$0.00	\$0.00	Cider	Boston Beer
155	8769200255	Angry Orchard Hop N Mad 6/12B	0.000	\$0.00	\$0.00	Cider	Boston Beer
156	79837312123	Magic Hat #9 12/12B	0.000	\$0.00	\$0.00	Micro	North American Breweri...
157	8769200149	Angry Orchard Green Apple 6/12B	0.000	\$0.00	\$0.00	Cider	Boston Beer
158	1820000784	O'Doul's 6/12B	0.000	\$0.00	\$0.00	Non Alcohol	Anheuser-Busch InBev
159	7289000158	Heineken Premium Light 6/12B	0.000	\$0.00	\$0.00	Imports	Heineken USA
160	8382007152	Smithwicks Irish Ale 6/12B	0.000	\$0.00	\$0.00	Imports	Diageo
161	3410008746	Redd's Green Apple 6/12B	0.000	\$0.00	\$0.00	Specialty	MillerCoors
162	8769284102	Angry Orchard Apple Ginger 6/12B	0.000	\$0.00	\$0.00	Cider	Boston Beer
163	8378322822	Sierra Nevada Seasonal 6/12B	0.000	\$0.00	\$0.00	Micro	Sierra Nevada
164	7199030078	Coors Light 18/12B	0.000	\$0.00	\$0.00	Premium	MillerCoors
165	7199047712	Keystone Ice 1/24C	0.000	\$0.00	\$0.00	Sub Premium	MillerCoors
166	1820017991	Shock Top Sampler 12/12B	0.000	\$0.00	\$0.00	Specialty	Anheuser-Busch InBev
167	72383000020	Lagunitas A Little Sumpin Sumpin 6/12B	0.000	\$0.00	\$0.00	Micro	Micro Breweries
168	85909300243	SixPoint Bengali 6/12C	0.000	\$0.00	\$0.00	Micro	Micro Breweries
169	86273700003	Montauk Session IPA 6/12C	0.000	\$0.00	\$0.00	Micro	Micro Breweries
170	88715100094	Coney Island Mermaid Pilsner 6/12B	0.000	\$0.00	\$0.00	Micro	Boston Beer
171	7089701331	Fosters Lager 1/25C	0.000	\$0.00	\$0.00	Imports	MillerCoors
172	7231163012	Dos Equis Lager 6/12B	0.000	\$0.00	\$0.00	Imports	Heineken USA
173	7231123012	Dos Equis Lager 12/12B	0.000	\$0.00	\$0.00	Imports	Heineken USA
174	83972800411	Big Flats Lager Beer 6/12C	0.000	\$0.00	\$0.00	Sub Premium	Micro Breweries
175	86273700000	Montauk Driftwood Ale 6/12C	0.000	\$0.00	\$0.00	Micro	Micro Breweries
176	1820021991	Stella Artois Cidre 4/12B	0.000	\$0.00	\$0.00	Cider	Anheuser-Busch InBev