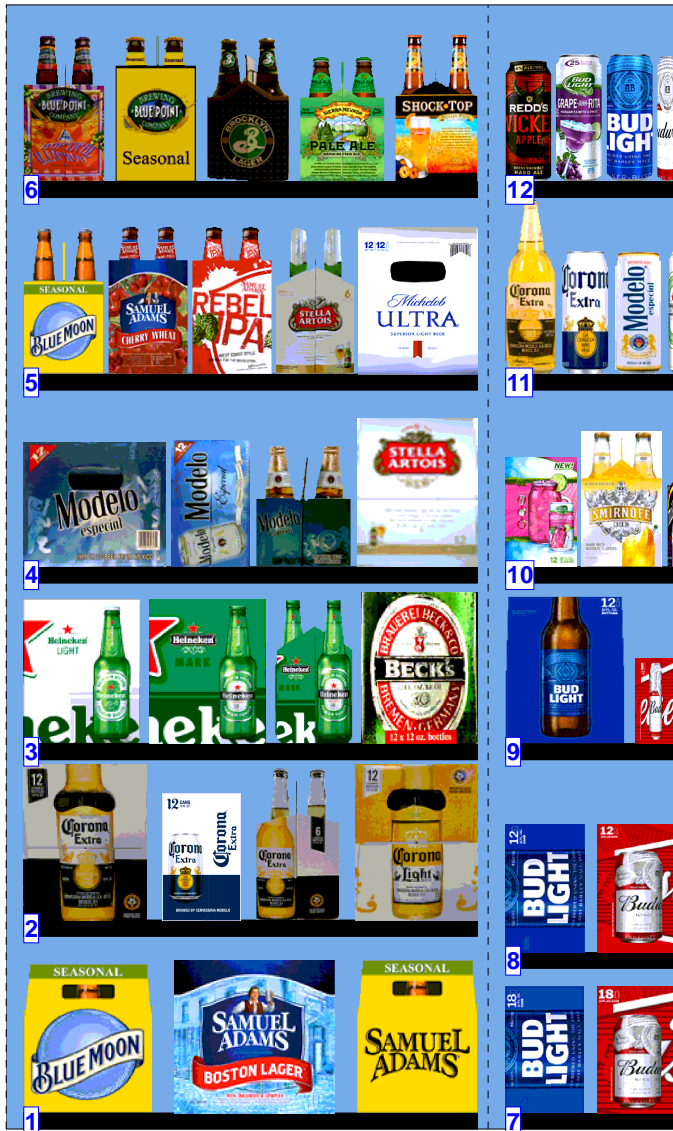




# WALGREENS 6334.psa



Store # 6334 H: 5 ft 10.00 in W: 5 ft D: 2 ft 3.00 in # of segments: 2

| 1          |                                | W:28.25 in | D:36.00 in | Avail Space: 2.73 in |       | Ht Space: 11.00 in |  |
|------------|--------------------------------|------------|------------|----------------------|-------|--------------------|--|
| UPC        | Name                           | Category   | HFacings   | Orientation          | Units |                    |  |
| 7199009536 | Blue Moon Seasonal 12/12B      | Specialty  | 1          | Side                 | 3     |                    |  |
| 8769210014 | Samuel Adams Boston Lgr 12/12B | Micro      | 1          | Front                | 4     |                    |  |
| 8769201103 | Samuel Adams Seasonal 12/12B   | Micro      | 1          | Side                 | 3     |                    |  |

| 2          |                     | W:28.25 in | D:36.00 in | Avail Space: 3.01 in |       | Ht Space: 10.00 in |  |
|------------|---------------------|------------|------------|----------------------|-------|--------------------|--|
| UPC        | Name                | Category   | HFacings   | Orientation          | Units |                    |  |
| 8066095615 | Corona Extra 12/12B | Imports    | 1          | Side                 | 3     |                    |  |
| 8066095695 | Corona Extra 12/12C | Imports    | 1          | Side                 | 3     |                    |  |
| 8066095605 | Corona Extra 6/12B  | Imports    | 1          | Side                 | 4     |                    |  |
| 8066095675 | Corona Light 12/12B | Imports    | 1          | Side                 | 3     |                    |  |

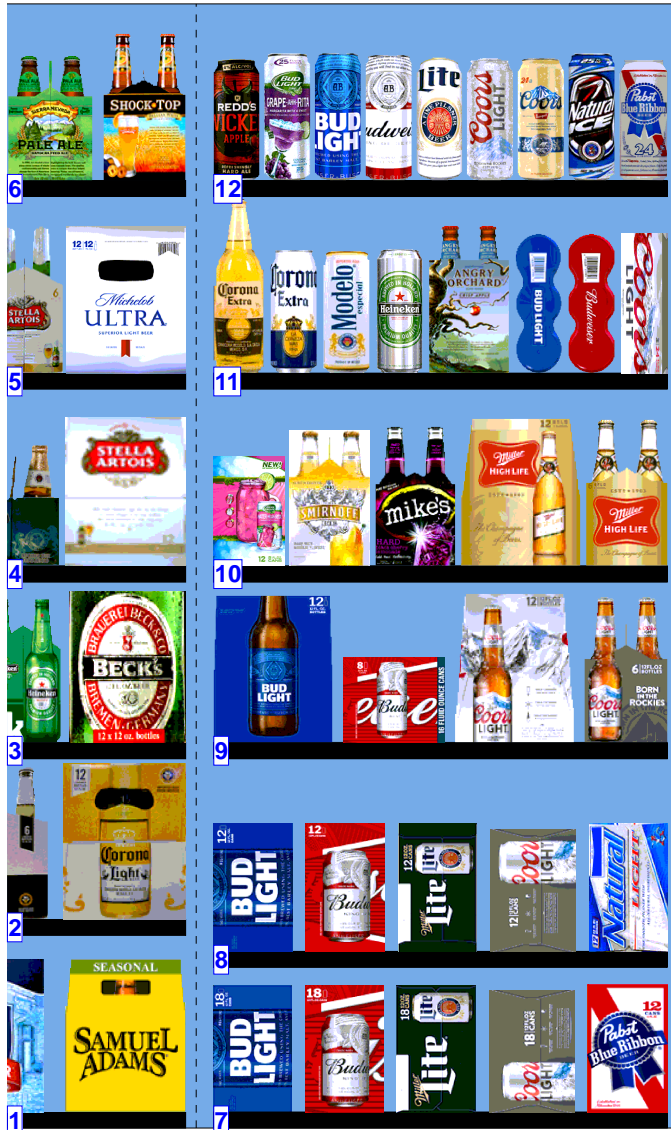
| 3          |                               | W:28.25 in | D:36.00 in | Avail Space: 1.75 in |       | Ht Space: 10.00 in |  |
|------------|-------------------------------|------------|------------|----------------------|-------|--------------------|--|
| UPC        | Name                          | Category   | HFacings   | Orientation          | Units |                    |  |
| 7289000159 | Heineken Premium Light 12/12B | Imports    | 1          | Side                 | 3     |                    |  |
| 7289000016 | Heineken 12/12B               | Imports    | 1          | Side                 | 3     |                    |  |
| 7289000011 | Heineken 6/12B                | Imports    | 1          | Side                 | 4     |                    |  |
| 8248812300 | Becks 12/12B                  | Imports    | 1          | Side                 | 3     |                    |  |

| 4           |                      | W:28.25 in | D:36.00 in | Avail Space: 1.06 in |       | Ht Space: 11.00 in |  |
|-------------|----------------------|------------|------------|----------------------|-------|--------------------|--|
| UPC         | Name                 | Category   | HFacings   | Orientation          | Units |                    |  |
| 8066095757  | Modelo 12/12B        | Imports    | 1          | Side                 | 2     |                    |  |
| 8066095715  | Modelo 12/12C        | Imports    | 1          | Side                 | 3     |                    |  |
| 8066095765  | Modelo 6/12B         | Imports    | 1          | Side                 | 4     |                    |  |
| 78615000014 | Stella Artois 12/11B | Imports    | 1          | Side                 | 3     |                    |  |

| 5           |                               | W:28.25 in | D:36.00 in | Avail Space: 1.07 in |       | Ht Space: 11.00 in |  |
|-------------|-------------------------------|------------|------------|----------------------|-------|--------------------|--|
| UPC         | Name                          | Category   | HFacings   | Orientation          | Units |                    |  |
| 7199009532  | Blue Moon Seasonal 6/12B      | Specialty  | 1          | Side                 | 4     |                    |  |
| 8769227102  | Samuel Adams Cherry Wht 6/12B | Micro      | 1          | Side                 | 4     |                    |  |
| 8769200127  | Samuel Adams Rebel IPA 6/12B  | Micro      | 1          | Side                 | 4     |                    |  |
| 78615000001 | Stella Artois 6/11B           | Imports    | 1          | Side                 | 4     |                    |  |
| 1820005990  | Michelob Ultra 12/12B         | Specialty  | 1          | Side                 | 3     |                    |  |

| 6           |                                    | W:28.25 in | D:36.00 in | Avail Space: 2.76 in |       | Ht Space: 11.00 in |  |
|-------------|------------------------------------|------------|------------|----------------------|-------|--------------------|--|
| UPC         | Name                               | Category   | HFacings   | Orientation          | Units |                    |  |
| 68174511102 | Blue Point Hoptical Illusion 6/12B | Micro      | 1          | Side                 | 4     |                    |  |
| 68174511118 | Blue Point Seasonal 6/12B          | Micro      | 1          | Side                 | 4     |                    |  |
| 3061300001  | Brooklyn Lager 6/12B               | Micro      | 1          | Side                 | 4     |                    |  |
| 8378337521  | Sierra Nevada Pale Ale 6/12B       | Micro      | 1          | Side                 | 4     |                    |  |
| 1820013986  | Shock Top Belgian White Ale 6/12B  | Specialty  | 1          | Side                 | 4     |                    |  |

# WALGREENS 6334.psa



Store # 6334 H: 5 ft 10.00 in W: 5 ft D: 2 ft 3.00 in # of segments: 2

| 7          |                    | W:28.25 in  | D:36.00 in | Avail Space: 3.31 in |       | Ht Space: 9.00 in |  |
|------------|--------------------|-------------|------------|----------------------|-------|-------------------|--|
| UPC        | Name               | Category    | HFacings   | Orientation          | Units |                   |  |
| 1820053218 | Bud Light 18/12C   | Premium     | 1          | Side                 | 2     |                   |  |
| 1820011218 | Budweiser 18/12C   | Premium     | 1          | Side                 | 2     |                   |  |
| 3410057340 | Miller Lite 18/12C | Premium     | 1          | Side                 | 2     |                   |  |
| 7199030017 | Coors Light 18/12C | Premium     | 1          | Side                 | 2     |                   |  |
| 2210000170 | Pabst 12/12C       | Sub Premium | 1          | Side                 | 3     |                   |  |

| 8          |                      | W:28.25 in  | D:36.00 in | Avail Space: 3.42 in |       | Ht Space: 12.00 in |  |
|------------|----------------------|-------------|------------|----------------------|-------|--------------------|--|
| UPC        | Name                 | Category    | HFacings   | Orientation          | Units |                    |  |
| 1820053047 | Bud Light 12/12C     | Premium     | 1          | Side                 | 3     |                    |  |
| 1820011047 | Budweiser 12/12C     | Premium     | 1          | Side                 | 3     |                    |  |
| 3410057636 | Miller Lite 12/12C   | Premium     | 1          | Side                 | 3     |                    |  |
| 7199000048 | Coors Light 12/12C   | Premium     | 1          | Side                 | 3     |                    |  |
| 1820015047 | Natural Light 12/12C | Sub Premium | 1          | Side                 | 3     |                    |  |

| 9          |                    | W:28.25 in | D:36.00 in | Avail Space: 1.99 in |       | Ht Space: 10.00 in |  |
|------------|--------------------|------------|------------|----------------------|-------|--------------------|--|
| UPC        | Name               | Category   | HFacings   | Orientation          | Units |                    |  |
| 1820000769 | Bud Light 12/12B   | Premium    | 1          | Side                 | 3     |                    |  |
| 1820008981 | Budweiser 8/16C    | Premium    | 1          | Side                 | 3     |                    |  |
| 7199030069 | Coors Light 12/12B | Premium    | 1          | Side                 | 3     |                    |  |
| 7199030005 | Coors Light 6/12B  | Premium    | 1          | Side                 | 4     |                    |  |

| 10          |                                       | W:28.25 in  | D:36.00 in | Avail Space: 1.42 in |       | Ht Space: 11.00 in |  |
|-------------|---------------------------------------|-------------|------------|----------------------|-------|--------------------|--|
| UPC         | Name                                  | Category    | HFacings   | Orientation          | Units |                    |  |
| 1820022992  | Bud Light Lime-A-Rita Seasonal 12/... | FMB         | 1          | Side                 | 3     |                    |  |
| 8200075748  | Smirnoff Ice Screwdriver 6/11B        | FMB         | 1          | Side                 | 4     |                    |  |
| 63598506744 | Mikes Hard Black Cherry Lemonad...    | FMB         | 1          | Side                 | 4     |                    |  |
| 3410001509  | Miller High Life 12/12B               | Sub Premium | 1          | Side                 | 3     |                    |  |
| 3410001505  | Miller High Life 6/12B                | Sub Premium | 1          | Side                 | 4     |                    |  |

| 11         |                                 | W:28.25 in | D:36.00 in | Avail Space: 2.95 in |       | Ht Space: 11.00 in |  |
|------------|---------------------------------|------------|------------|----------------------|-------|--------------------|--|
| UPC        | Name                            | Category   | HFacings   | Orientation          | Units |                    |  |
| 8066095641 | Corona Extra 1/24B              | Imports    | 1          | Front                | 11    |                    |  |
| 8066095643 | Corona Extra 1/24C              | Imports    | 1          | Front                | 12    |                    |  |
| 8066095721 | Modelo 1/24C                    | Imports    | 1          | Front                | 12    |                    |  |
| 7289000119 | Heineken 1/24C                  | Imports    | 1          | Front                | 12    |                    |  |
| 8769282102 | Angry Orchard Crisp Apple 6/12B | Cider      | 1          | Side                 | 4     |                    |  |
| 1820021986 | Bud Light 3/25C                 | Premium    | 1          | Top 90               | 4     |                    |  |
| 1820021985 | Budweiser 3/25C                 | Premium    | 1          | Top 90               | 4     |                    |  |
| 7199030120 | Coors Light 3/24C               | Premium    | 1          | Top 90               | 4     |                    |  |

| 12         |                                   | W:28.25 in  | D:36.00 in | Avail Space: 2.31 in |       | Ht Space: 11.00 in |  |
|------------|-----------------------------------|-------------|------------|----------------------|-------|--------------------|--|
| UPC        | Name                              | Category    | HFacings   | Orientation          | Units |                    |  |
| 3410000323 | Redd's Wicked Apple 1/24C         | Specialty   | 1          | Front                | 12    |                    |  |
| 1820025833 | Bud Light Lime Grape-A-Rita 1/25C | FMB         | 1          | Front                | 12    |                    |  |
| 1820025001 | Bud Light 1/25C                   | Premium     | 1          | Front                | 12    |                    |  |
| 1820025000 | Budweiser 1/25C                   | Premium     | 1          | Front                | 12    |                    |  |
| 3410000355 | Miller Lite 1/24C                 | Premium     | 1          | Front                | 12    |                    |  |
| 7199030065 | Coors Light 1/24C                 | Premium     | 1          | Front                | 12    |                    |  |
| 7199010071 | Coors 1/24C                       | Premium     | 1          | Front                | 12    |                    |  |
| 1820025008 | Natural Ice 1/25C                 | Sub Premium | 1          | Front                | 12    |                    |  |
| 2210000004 | Pabst 1/24C                       | Sub Premium | 1          | Front                | 12    |                    |  |