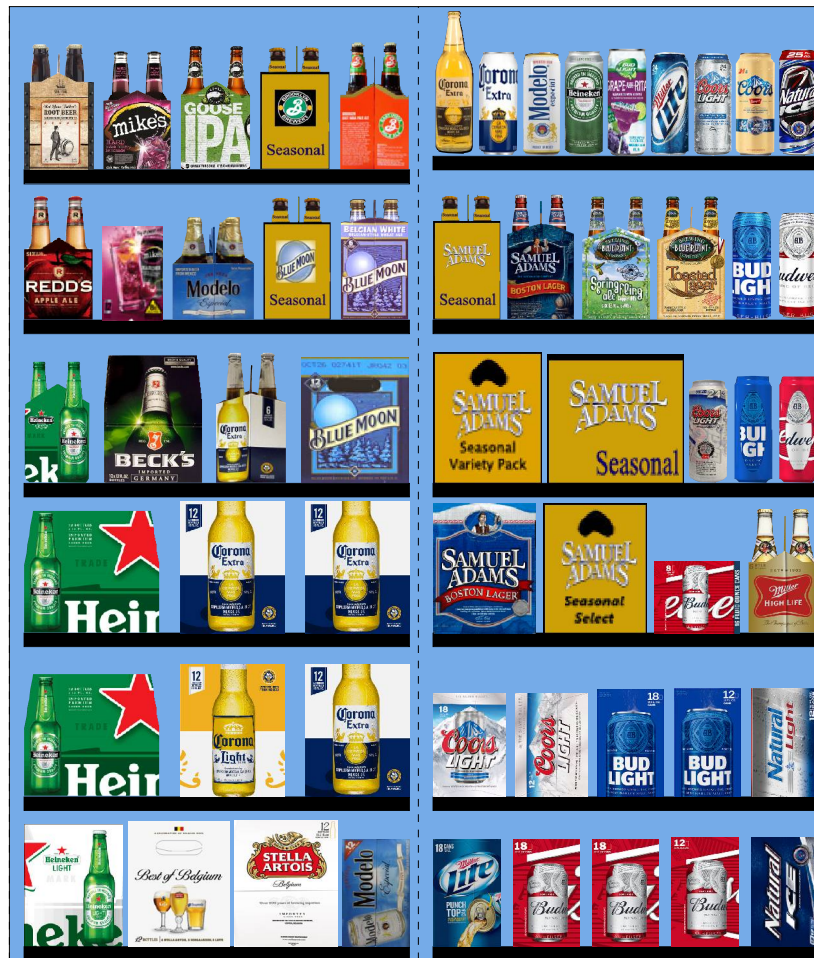


5955.psa For Validation Purposes Only NOT FINAL



Printed: 4/14/2016

Traffic Flow Left-right

POG: 5955.psa



POG Size: 5'0.00

Segments 1 - 2 of 2

Page: 1

SCHEMATIC BACKING REPORT

5955.psa

Planogram: 5955.psa

Segment #1 : Shelf #6 DEPTH: 36 in WIDTH: 28 in DISTANCE FROM TOP OF BASE SHELF TO BOTTOM OF SHELF: 0.00 in

POS	# FAC	UPC	ID	NAME	CASES	CAPACITY	UNITS HIGH	DOS	MVMT
20	1	7289000159	7289000159	Heineken Premium Light 12/12B	1.5	3	1	3.1	6.7
21	1	1820020982	1820020982	Best of Belgium Variety 12/11B	1.5	3	1	8.0	2.6
22	1	78615000014	78615000014	Stella Artois 12/11B	1.5	3	1	8.1	2.6
23	1	8066095715	8066095715	Modelo 12/12C	1.5	3	1	18.2	1.2

Segment #1 : Shelf #5 DEPTH: 36 in WIDTH: 28 in DISTANCE FROM TOP OF BASE SHELF TO BOTTOM OF SHELF: 11.00 in

POS	# FAC	UPC	ID	NAME	CASES	CAPACITY	UNITS HIGH	DOS	MVMT
17	1	7289000016	7289000016	Heineken 12/12B	2.0	4	1	2.3	24.2
18	1	8066095675	8066095675	Corona Light 12/12B	1.5	3	1	7.7	2.7
19	1	8066095615	8066095615	Corona Extra 12/12B	1.5	3	1	1.9	33.4

Segment #1 : Shelf #4 DEPTH: 36 in WIDTH: 28 in DISTANCE FROM TOP OF BASE SHELF TO BOTTOM OF SHELF: 23.00 in

POS	# FAC	UPC	ID	NAME	CASES	CAPACITY	UNITS HIGH	DOS	MVMT
15	1	7289000016	7289000016	Heineken 12/12B	2.0	4	1	2.3	24.2
16	2	8066095615	8066095615	Corona Extra 12/12B	3.0	6	1	1.9	33.4

Segment #1 : Shelf #3 DEPTH: 36 in WIDTH: 28 in DISTANCE FROM TOP OF BASE SHELF TO BOTTOM OF SHELF: 34.00 in

POS	# FAC	UPC	ID	NAME	CASES	CAPACITY	UNITS HIGH	DOS	MVMT
11	1	7289000011	7289000011	Heineken 6/12B	1.0	4	1	18.5	1.5
12	1	8248812300	8248812300	Becks 12/12B	1.5	3	1	4.2	5.0
13	1	8066095605	8066095605	Corona Extra 6/12B	1.0	4	1	17.3	1.6
14	1	7199009516	7199009516	Blue Moon Belgian White Ale 12/12B	1.5	3	1	17.6	1.2

Segment #1 : Shelf #2 DEPTH: 36 in WIDTH: 28 in DISTANCE FROM TOP OF BASE SHELF TO BOTTOM OF SHELF: 46.00 in

POS	# FAC	UPC	ID	NAME	CASES	CAPACITY	UNITS HIGH	DOS	MVMT
6	1	3410008716	3410008716	Redd's Apple Ale 6/12B	1.0	4	1	28.0	1.0
7	1	63598525948	63598525948	Mikes HARDER Blk Cherry Lemonade 12/...	1.5	3	1	17.1	1.2
8	1	8066095765	8066095765	Modelo 6/12B	1.0	4	1	0.0	0.0
9	1	7199009532	7199009532	Blue Moon Seasonal 6/12B	1.0	4	1	17.5	1.6
10	1	7199009511	7199009511	Blue Moon Belgian White Ale 6/12B	1.0	4	1	18.2	1.5

Segment #1 : Shelf #1 DEPTH: 36 in WIDTH: 28 in DISTANCE FROM TOP OF BASE SHELF TO BOTTOM OF SHELF: 57.00 in

POS	# FAC	UPC	ID	NAME	CASES	CAPACITY	UNITS HIGH	DOS	MVMT
1	1	9200002000	9200002000	Small Town Not Your Fathers RtBr 6/12B	1.0	4	1	5.6	5.0
2	1	63598506744	63598506744	Mikes Hard Black Cherry Lemonade 6/11B	1.0	4	1	17.3	1.6
3	1	73692011132	73692011132	Goose Island India Pale Ale 6/12B	1.0	4	1	36.6	0.8
4	1	3061300053	3061300053	Brooklyn Seasonal 6/12B	1.0	4	1	14.0	2.0
5	1	3061300019	3061300019	Brooklyn East India Pale Ale 6/12B	1.0	4	1	28.0	1.0

Segment #2 : Shelf #6 DEPTH: 36 in WIDTH: 28 in DISTANCE FROM TOP OF BASE SHELF TO BOTTOM OF SHELF: 0.00 in

POS	# FAC	UPC	ID	NAME	CASES	CAPACITY	UNITS HIGH	DOS	MVMT
53	1	3410057340	3410057340	Miller Lite 18/12C	2.0	2	1	7.6	1.8
54	2	1820011218	1820011218	Budweiser 18/12C	4.0	4	1	2.0	14.2
55	1	1820011047	1820011047	Budweiser 12/12C	1.5	3	1	3.0	6.9
56	1	1820000964	1820000964	Natural Ice 12/12C	1.5	3	1	5.9	3.5

SCHEMATIC BACKING REPORT

5955.psa

Segment #2 : Shelf #5 DEPTH: 36 in WIDTH: 28 in DISTANCE FROM TOP OF BASE SHELF TO BOTTOM OF SHELF: 11.00 in

POS	# FAC	UPC	ID	NAME	CASES	CAPACITY	UNITS HIGH	DOS	MVMT
48	1	7199030017	7199030017	Coors Light 18/12C	2.0	2	1	1.7	8.4
49	1	7199000048	7199000048	Coors Light 12/12C	1.5	3	1	5.5	3.9
50	1	1820053218	1820053218	Bud Light 18/12C	2.0	2	1	3.4	4.1
51	1	1820053047	1820053047	Bud Light 12/12C	1.5	3	1	2.8	7.5
52	1	1820015047	1820015047	Natural Light 12/12C	1.5	3	1	1.9	11.2

Segment #2 : Shelf #4 DEPTH: 36 in WIDTH: 28 in DISTANCE FROM TOP OF BASE SHELF TO BOTTOM OF SHELF: 23.00 in

POS	# FAC	UPC	ID	NAME	CASES	CAPACITY	UNITS HIGH	DOS	MVMT
44	1	8769210014	8769210014	Samuel Adams Boston Lgr 12/12B	1.5	3	1	45.1	0.5
45	1	8769200037	8769200037	Samuel Adams Seasonal Select 12/12B	1.5	3	1	34.1	0.6
46	1	1820008981	1820008981	Budweiser 8/16C	1.0	3	1	0.0	0.0
47	1	3410001505	3410001505	Miller High Life 6/12B	1.0	4	1	0.0	0.0

Segment #2 : Shelf #3 DEPTH: 36 in WIDTH: 28 in DISTANCE FROM TOP OF BASE SHELF TO BOTTOM OF SHELF: 34.00 in

POS	# FAC	UPC	ID	NAME	CASES	CAPACITY	UNITS HIGH	DOS	MVMT
39	1	8769229103	8769229103	Samuel Adams Ssnl Variety-Mix Pk 12/12B	1.5	3	1	17.1	1.2
40	1	8769201103	8769201103	Samuel Adams Seasonal 12/12B	2.0	4	1	11.0	2.5
41	1	7199030120	7199030120	Coors Light 3/24C	0.8	4	1	0.0	0.0
42	1	1820021986	1820021986	Bud Light 3/25C	0.8	4	1	0.0	0.0
43	1	1820021985	1820021985	Budweiser 3/25C	0.8	4	1	0.0	0.0

Segment #2 : Shelf #2 DEPTH: 36 in WIDTH: 28 in DISTANCE FROM TOP OF BASE SHELF TO BOTTOM OF SHELF: 46.00 in

POS	# FAC	UPC	ID	NAME	CASES	CAPACITY	UNITS HIGH	DOS	MVMT
33	1	8769230050	8769230050	Samuel Adams Seasonal 6/12B	1.0	4	1	14.9	1.9
34	1	8769210012	8769210012	Samuel Adams Boston Lgr 6/12B	1.0	4	1	34.3	0.8
35	1	68174511118	68174511118	Blue Point Seasonal 6/12B	1.0	4	1	13.5	2.1
36	1	68174511112	68174511112	Blue Point Toasted Lager 6/12B	1.0	4	1	30.3	0.9
37	1	1820025001	1820025001	Bud Light 1/25C	0.8	12	1	11.4	7.4
38	1	1820025000	1820025000	Budweiser 1/25C	0.8	12	1	8.5	9.9

Segment #2 : Shelf #1 DEPTH: 36 in WIDTH: 28 in DISTANCE FROM TOP OF BASE SHELF TO BOTTOM OF SHELF: 58.00 in

POS	# FAC	UPC	ID	NAME	CASES	CAPACITY	UNITS HIGH	DOS	MVMT
24	1	8066095641	8066095641	Corona Extra 1/24B	0.9	11	1	0.0	0.0
25	1	8066095643	8066095643	Corona Extra 1/24C	1.0	12	1	33.4	2.5
26	1	8066095721	8066095721	Modelo 1/24C	1.0	12	1	49.6	1.7
27	1	7289000119	7289000119	Heineken 1/24C	1.0	12	1	11.8	7.1
28	1	1820025833	1820025833	Bud Light Lime Grape-A-Rita 1/25C	0.8	12	1	0.0	0.0
29	1	3410000355	3410000355	Miller Lite 1/24C	1.0	12	1	0.0	0.0
30	1	7199030065	7199030065	Coors Light 1/24C	1.0	12	1	18.7	4.5
31	1	7199010071	7199010071	Coors 1/24C	1.0	12	1	25.6	3.3
32	1	1820025008	1820025008	Natural Ice 1/25C	0.8	12	1	0.0	0.0

SKUs on Planogram: 54

UNALLOCATED ITEMS/OPTIONAL ITEMS

5955.psa

UNALLOCATED SKU REPORT

	UPC	NAME	MVMT	Profit	Sales	Category	Manufacturer
1	8797502650	Sapporo Draft 1/22C	2.886	\$0.00	\$0.00	Imports	Import
2	1820025505	Bud Light Lime Straw-Ber-Rita 1/25C	1.692	\$0.00	\$0.00	FMB	Anheuser-Busch InBev
3	7199030069	Coors Light 12/12B	1.644	\$0.00	\$0.00	Premium	MillerCoors
4	3410001509	Miller High Life 12/12B	1.393	\$0.00	\$0.00	Sub Premium	MillerCoors
5	8200072385	Smirnoff Ice 6/11B	1.385	\$0.00	\$0.00	FMB	Diageo
6	3410057509	Miller Lite 12/12B	1.314	\$0.00	\$0.00	Premium	MillerCoors
7	88715100213	Coney Island Hard Root Beer 6/12B	1.308	\$0.00	\$0.00	Micro	Boston Beer
8	8200075748	Smirnoff Ice Screwdriver 6/11B	1.077	\$0.00	\$0.00	FMB	Diageo
9	1820000769	Bud Light 12/12B	1.024	\$0.00	\$0.00	Premium	Anheuser-Busch InBev
10	63598525945	Mikes HARDER Lemonade 12/8C	1.000	\$0.00	\$0.00	FMB	Mark Anthony Brands
11	63598560611	Mikes Hard Cranberry Lemonade 6/11B	0.923	\$0.00	\$0.00	FMB	Mark Anthony Brands
12	8200072751	Smirnoff Ice Green Apple 6/11B	0.846	\$0.00	\$0.00	FMB	Diageo
13	7289000020	Heineken 12/12C	0.846	\$0.00	\$0.00	Imports	Heineken USA
14	3410008730	Redd's Strawberry Ale 6/12B	0.615	\$0.00	\$0.00	Specialty	MillerCoors
15	9200002013	Small Town Not Your Fathers Gngr 6/1...	0.538	\$0.00	\$0.00	Micro	Pabst
16	8066095695	Corona Extra 12/12C	0.538	\$0.00	\$0.00	Imports	Crown Imports LLC
17	3061300001	Brooklyn Lager 6/12B	0.529	\$0.00	\$0.00	Micro	Micro Breweries
18	1820000771	Budweiser 12/12B	0.487	\$0.00	\$0.00	Premium	Anheuser-Busch InBev
19	1820016989	Shock Top Raspberry Wheat 6/12B	0.462	\$0.00	\$0.00	Specialty	Anheuser-Busch InBev
20	3410000340	Redd's Variety Pack 12/12B	0.462	\$0.00	\$0.00	Specialty	MillerCoors
21	3410051607	Leinenkugel Seasonal Shandy 12/12B	0.462	\$0.00	\$0.00	Specialty	MillerCoors
22	73692011118	Goose Island Seasonal 6/12B	0.462	\$0.00	\$0.00	Micro	Anheuser-Busch InBev
23	63598510062	Mikes Hard Lemonade 6/11B	0.427	\$0.00	\$0.00	FMB	Mark Anthony Brands
24	1820020998	Bud Light 8/16AL	0.391	\$0.00	\$0.00	Premium	Anheuser-Busch InBev
25	63848900029	Dogfish Head 60 Minute IPA 6/12B	0.385	\$0.00	\$0.00	Micro	Micro Breweries
26	8769200004	Samuel Adams Seasonal Select 6/12B	0.377	\$0.00	\$0.00	Micro	Boston Beer
27	68174511102	Blue Point Hoptical Illusion 6/12B	0.361	\$0.00	\$0.00	Micro	Anheuser-Busch InBev
28	1820025533	Bud Light Lime Mang-O-Rita 1/25C	0.308	\$0.00	\$0.00	FMB	Anheuser-Busch InBev
29	3410008747	Redd's Green Apple 12/12B	0.308	\$0.00	\$0.00	Specialty	MillerCoors
30	8992427896	Yuengling Traditional Lager 12/12B	0.308	\$0.00	\$0.00	Premium	DG Yuengling & Sons
31	2219800436	McKenzie's Pmpkn Jack Hard Cider 6/...	0.308	\$0.00	\$0.00	Cider	Micro Breweries
32	85114800506	Great South Bay Seasonal 6/12B	0.308	\$0.00	\$0.00	Micro	Micro Breweries
33	8769283102	Twisted Tea 6/12B	0.308	\$0.00	\$0.00	FMB	Boston Beer
34	7199009536	Blue Moon Seasonal 12/12B	0.268	\$0.00	\$0.00	Specialty	MillerCoors
35	85114800500	Great South Bay Blood Orange 6/12B	0.231	\$0.00	\$0.00	Micro	Micro Breweries
36	1497450009	Woodchuck Amber 6/12B	0.231	\$0.00	\$0.00	Cider	Vermont Hard Cider Co...
37	1820024001	Stella Artois Cidre 6/12B	0.212	\$0.00	\$0.00	Cider	Anheuser-Busch InBev
38	1820021979	Budweiser 8/16AL	0.188	\$0.00	\$0.00	Premium	Anheuser-Busch InBev
39	1820005990	Michelob Ultra 12/12B	0.175	\$0.00	\$0.00	Specialty	Anheuser-Busch InBev
40	1820019991	Shock Top Seasonal 12/12B	0.173	\$0.00	\$0.00	Specialty	Anheuser-Busch InBev
41	79837312602	Magic Hat #9 6/12B	0.169	\$0.00	\$0.00	Micro	North American Breweri...
42	8834510151	Strongbow Gold Hard Cider 6/11B	0.160	\$0.00	\$0.00	Cider	Heineken USA
43	9425400015	Post Road Pumpkin Ale 6/12B	0.158	\$0.00	\$0.00	Micro	Micro Breweries
44	8066095621	Corona Light 12/12C	0.154	\$0.00	\$0.00	Imports	Crown Imports LLC
45	8780000049	Smith & Forge Hard Cider 4/16C	0.154	\$0.00	\$0.00	Cider	MillerCoors
46	7289000188	Heineken Premium Light 12/12C	0.154	\$0.00	\$0.00	Imports	Heineken USA
47	1820022989	Bud Light Lime Mang-O-Rita 12/8C	0.154	\$0.00	\$0.00	FMB	Anheuser-Busch InBev
48	1820021998	Shock Top Honeycrisp Apple Wheat 6/...	0.154	\$0.00	\$0.00	Specialty	Anheuser-Busch InBev
49	4182790036	Harpoon UFO White 6/12B	0.154	\$0.00	\$0.00	Micro	Harpoon
50	7199009554	Blue Moon Brewmaster's Sampler 12/1...	0.148	\$0.00	\$0.00	Specialty	MillerCoors
51	8378337512	Sierra Nevada Pale Ale 12/12B	0.138	\$0.00	\$0.00	Micro	Sierra Nevada
52	8378337521	Sierra Nevada Pale Ale 6/12B	0.112	\$0.00	\$0.00	Micro	Sierra Nevada
53	1820020991	Stella Artois Gft Pk 1/25B	0.090	\$0.00	\$0.00	Imports	Anheuser-Busch InBev
54	1820015981	Shock Top Belgian White Ale 12/12B	0.090	\$0.00	\$0.00	Specialty	Anheuser-Busch InBev
55	3410057636	Miller Lite 12/12C	0.089	\$0.00	\$0.00	Premium	MillerCoors
56	8066095625	Corona Light 6/12B	0.082	\$0.00	\$0.00	Imports	Crown Imports LLC
57	8769200109	Samuel Adams Seasonal 12/12C	0.077	\$0.00	\$0.00	Micro	Boston Beer
58	8769200127	Samuel Adams Rebel IPA 6/12B	0.077	\$0.00	\$0.00	Micro	Boston Beer
59	85114800505	Great South Bay Massive IPA 6/12B	0.077	\$0.00	\$0.00	Micro	Micro Breweries
60	8378337531	Sierra Nevada Nooners Pilsner 6/12B	0.077	\$0.00	\$0.00	Micro	Sierra Nevada
61	8200072754	Smirnoff Ice Raspberry 6/11B	0.077	\$0.00	\$0.00	FMB	Diageo
62	64286020001	Founders Pale Ale 6/12B	0.077	\$0.00	\$0.00	Micro	Micro Breweries
63	85998900522	Greenport Harbor Seasonal 6/12B	0.077	\$0.00	\$0.00	Micro	Micro Breweries

UNALLOCATED ITEMS/OPTIONAL ITEMS

5955.psa

UNALLOCATED SKU REPORT

	UPC	NAME	MVMT	Profit	Sales	Category	Manufacturer
64	1820014990	Bud Light Lime 12/12B	0.077	\$0.00	\$0.00	Specialty	Anheuser-Busch InBev
65	81760601001	Captain Lawrence Liquid Gold 6/12B	0.077	\$0.00	\$0.00	Micro	Micro Breweries
66	4182700076	Harpoon IPA 6/12B	0.073	\$0.00	\$0.00	Micro	Harpoon
67	79837312606	Magic Hat Seasonal 6/12B	0.073	\$0.00	\$0.00	Micro	North American Breweri...
68	8769227102	Samuel Adams Cherry Wht 6/12B	0.072	\$0.00	\$0.00	Micro	Boston Beer
69	1820017993	Shock Top Seasonal 6/12B	0.054	\$0.00	\$0.00	Specialty	Anheuser-Busch InBev
70	73692011182	Goose Island 312 Urban Wheat Ale 6/1...	0.047	\$0.00	\$0.00	Micro	Anheuser-Busch InBev
71	1820013986	Shock Top Belgian White Ale 6/12B	0.041	\$0.00	\$0.00	Specialty	Anheuser-Busch InBev
72	1820017991	Shock Top Sampler 12/12B	0.038	\$0.00	\$0.00	Specialty	Anheuser-Busch InBev
73	8769200129	Samuel Adams Rebel IPA 12/12B	0.030	\$0.00	\$0.00	Micro	Boston Beer
74	1820022992	Bud Light Lime-A-Rita Seasonal 12/8C	0.002	\$0.00	\$0.00	FMB	Anheuser-Busch InBev
75	1820096721	Michelob Ultra 18/12C SC	0.000	\$0.00	\$0.00	Specialty	Anheuser-Busch InBev
76	7289000000	Heineken 6/12C	0.000	\$0.00	\$0.00	Imports	Heineken USA
77	8382012418	Guinness Nitro IPA 6/11C	0.000	\$0.00	\$0.00	Imports	
78	1820000833	Bud Light 6/12B	0.000	\$0.00	\$0.00	Premium	Anheuser-Busch InBev
79	86273700003	Montauk Session IPA 6/12C	0.000	\$0.00	\$0.00	Micro	Micro Breweries
80	8382010403	Guinness Draught 12/11B	0.000	\$0.00	\$0.00	Imports	Diageo
81	7231163012	Dos Equis Lager 6/12B	0.000	\$0.00	\$0.00	Imports	Heineken USA
82	7089701331	Fosters Lager 1/25C	0.000	\$0.00	\$0.00	Imports	MillerCoors
83	78624311990	Flying Dog Raging Blch Belgn Ale 6/12B	0.000	\$0.00	\$0.00	Micro	Micro Breweries
84	64286020024	Founders All Day IPA 6/12B	0.000	\$0.00	\$0.00	Micro	Micro Breweries
85	7199048004	Keystone Light 12/12C	0.000	\$0.00	\$0.00	Sub Premium	MillerCoors
86	7199047712	Keystone Ice 1/24C	0.000	\$0.00	\$0.00	Sub Premium	MillerCoors
87	64286020007	Founders Dirty Bastard 6/12B	0.000	\$0.00	\$0.00	Micro	Micro Breweries
88	7199030104	Coors Light 9/16AL	0.000	\$0.00	\$0.00	Premium	MillerCoors
89	18195400002	Peroni Nastro Azzuro 6/12B	0.000	\$0.00	\$0.00	Imports	MillerCoors
90	1820006991	Michelob Ultra 12/12C SC	0.000	\$0.00	\$0.00	Specialty	Anheuser-Busch InBev
91	8066095757	Modelo 12/12B	0.000	\$0.00	\$0.00	Imports	Crown Imports LLC
92	85909300242	SixPoint Sweet Action 6/12C	0.000	\$0.00	\$0.00	Micro	Micro Breweries
93	88715100195	Coney Island Overpass IPA 6/12B	0.000	\$0.00	\$0.00	Micro	Boston Beer
94	8769200255	Angry Orchard Hop N Mad 6/12B	0.000	\$0.00	\$0.00	Cider	Boston Beer
95	3410008746	Redd's Green Apple 6/12B	0.000	\$0.00	\$0.00	Specialty	MillerCoors
96	1820019987	Bud Light Lime-A-Rita 12/8C	0.000	\$0.00	\$0.00	FMB	Anheuser-Busch InBev
97	78615000001	Stella Artois 6/11B	0.000	\$0.00	\$0.00	Imports	Anheuser-Busch InBev
98	7199000008	Coors Light 6/12C	0.000	\$0.00	\$0.00	Premium	MillerCoors
99	8382012360	Guinness Draught 4/15C	0.000	\$0.00	\$0.00	Imports	Diageo
100	64286090024	Founders All Day IPA 15/12C	0.000	\$0.00	\$0.00	Micro	Micro Breweries
101	1820000784	O'Doul's 6/12B	0.000	\$0.00	\$0.00	Non Alcohol	Anheuser-Busch InBev
102	8769200033	Angry Orchard Crisp Apple 12/12B	0.000	\$0.00	\$0.00	Cider	Boston Beer
103	2210000170	Pabst 12/12C	0.000	\$0.00	\$0.00	Sub Premium	Pabst
104	7289000174	Heineken 1/169MBR	0.000	\$0.00	\$0.00	Imports	Heineken USA
105	4182700712	Harpoon IPA 12/12B	0.000	\$0.00	\$0.00	Micro	Harpoon
106	63598512998	Mikes Hard Variety Pack 12/11B	0.000	\$0.00	\$0.00	FMB	Mark Anthony Brands
107	8382023473	Harp Lager 6/12B	0.000	\$0.00	\$0.00	Imports	Diageo
108	3410057023	Miller Lite 9/16AL	0.000	\$0.00	\$0.00	Premium	MillerCoors
109	7289010016	Amstel Light 12/12B	0.000	\$0.00	\$0.00	Imports	Heineken USA
110	88715100094	Coney Island Mermaid Pilsner 6/12B	0.000	\$0.00	\$0.00	Micro	Boston Beer
111	79837312123	Magic Hat #9 12/12B	0.000	\$0.00	\$0.00	Micro	North American Breweri...
112	70277008101	Omission Lager 6/12B	0.000	\$0.00	\$0.00	Micro	Anheuser-Busch InBev
113	7231133140	Dos Equis Ambar 12/12B	0.000	\$0.00	\$0.00	Imports	Heineken USA
114	63598506074	Mikes Hard Seasonal 6/11B	0.000	\$0.00	\$0.00	FMB	Mark Anthony Brands
115	7199009561	Blue Moon White IPA 6/12B	0.000	\$0.00	\$0.00	Specialty	MillerCoors
116	8769275102	Twisted Tea Half & Half 6/12B	0.000	\$0.00	\$0.00	FMB	Boston Beer
117	8248812345	Becks 6/12B	0.000	\$0.00	\$0.00	Imports	Anheuser-Busch InBev
118	1820020993	Bud Light Lime Straw-Ber-Rita 12/8C	0.000	\$0.00	\$0.00	FMB	Anheuser-Busch InBev
119	8382010401	Guinness Draught 6/11B	0.000	\$0.00	\$0.00	Imports	Diageo
120	3410051605	Leinenkugel Seasonal Shandy 6/12B	0.000	\$0.00	\$0.00	Specialty	MillerCoors
121	8382018132	Guinness Blonde 6/12B	0.000	\$0.00	\$0.00	Imports	Diageo
122	63598506822	Mikes Hard Light Lemonade 6/11B	0.000	\$0.00	\$0.00	FMB	Mark Anthony Brands
123	7289000158	Heineken Premium Light 6/12B	0.000	\$0.00	\$0.00	Imports	Heineken USA
124	1820079047	O'Doul's 12/12C	0.000	\$0.00	\$0.00	Non Alcohol	Anheuser-Busch InBev
125	8378322812	Sierra Nevada Seasonal 12/12B	0.000	\$0.00	\$0.00	Micro	Sierra Nevada
126	78615000036	Hoegaarden 6/11B	0.000	\$0.00	\$0.00	Imports	Anheuser-Busch InBev

UNALLOCATED ITEMS/OPTIONAL ITEMS

5955.psa

UNALLOCATED SKU REPORT

	UPC	NAME	MVMT	Profit	Sales	Category	Manufacturer
127	7289010011	Amstel Light 6/12B	0.000	\$0.00	\$0.00	Imports	Heineken USA
128	8834510005	Newcastle Brown Ale 6/12B	0.000	\$0.00	\$0.00	Imports	Heineken USA
129	7167007106	Saranac Twelve Beers 12/12B	0.000	\$0.00	\$0.00	Micro	FX Matt
130	8382007152	Smithwicks Irish Ale 6/12B	0.000	\$0.00	\$0.00	Imports	Diageo
131	8769259102	Samuel Adams Latitude 48 IPA 6/12B	0.000	\$0.00	\$0.00	Micro	Boston Beer
132	1820000016	Budweiser 6/12C	0.000	\$0.00	\$0.00	Premium	Anheuser-Busch InBev
133	1820011985	Redbridge Lager 6/12B	0.000	\$0.00	\$0.00	Specialty	Anheuser-Busch InBev
134	8382012368	Guinness Draught 8/15C	0.000	\$0.00	\$0.00	Imports	Diageo
135	63625177612	Stone IPA 6/12B	0.000	\$0.00	\$0.00	Micro	Micro Breweries
136	68174511130	Blue Point Blueberry Ale 6/12B	0.000	\$0.00	\$0.00	Micro	Anheuser-Busch InBev
137	7231163011	Dos Equis Ambar 6/12B	0.000	\$0.00	\$0.00	Imports	Heineken USA
138	7199076400	George Killian's Irish Red 12/12B	0.000	\$0.00	\$0.00	Specialty	MillerCoors
139	4182700146	Harpoon Seasonal 6/12B	0.000	\$0.00	\$0.00	Micro	Harpoon
140	68715190007	Southampton Double White Ale 6/12B	0.000	\$0.00	\$0.00	Micro	Micro Breweries
141	8992429386	Yuengling Black & Tan 12/12B	0.000	\$0.00	\$0.00	Premium	DG Yuengling & Sons
142	1820012982	Land Shark Lager 6/12B	0.000	\$0.00	\$0.00	Specialty	Anheuser-Busch InBev
143	8769200079	Angry Orchard Seasonal 6/12B	0.000	\$0.00	\$0.00	Cider	Boston Beer
144	8382056793	Red Stripe 6/12B	0.000	\$0.00	\$0.00	Imports	Diageo
145	72383000020	Lagunitas A Little Sumpin Sumpin 6/12B	0.000	\$0.00	\$0.00	Micro	Micro Breweries
146	1820012998	Land Shark Lager 12/12B	0.000	\$0.00	\$0.00	Specialty	Anheuser-Busch InBev
147	7089718331	Fosters Premium Ale 1/25C	0.000	\$0.00	\$0.00	Imports	MillerCoors
148	1820023984	Oculto 6/12B	0.000	\$0.00	\$0.00	Micro	Anheuser-Busch InBev
149	8992427891	Yuengling Traditional Lager 6/12B	0.000	\$0.00	\$0.00	Premium	DG Yuengling & Sons
150	3410000323	Redd's Wicked Apple 1/24C	0.000	\$0.00	\$0.00	Specialty	MillerCoors
151	8378316000	Sierra Nevada 4 Way IPA Vrtly Pck 12/...	0.000	\$0.00	\$0.00	Micro	Sierra Nevada
152	3410008755	Redd's Wicked Black Cherry 12/10C	0.000	\$0.00	\$0.00	Specialty	MillerCoors
153	1820024008	Stella Artois Gft Pk 1/25B	0.000	\$0.00	\$0.00	Imports	Anheuser-Busch InBev
154	8769230030	Samuel Adams Boston Ale 6/12B	0.000	\$0.00	\$0.00	Micro	Boston Beer
155	3061300071	Brooklyn Variety Pack 12/12B	0.000	\$0.00	\$0.00	Micro	Micro Breweries
156	1820018993	Bud Light Platinum 6/12B	0.000	\$0.00	\$0.00	Specialty	Anheuser-Busch InBev
157	79837312125	Magic Hat Variety Pack 12/12B	0.000	\$0.00	\$0.00	Micro	North American Breweri...
158	3410057505	Miller Lite 6/12B	0.000	\$0.00	\$0.00	Premium	MillerCoors
159	3410008722	Redd's Apple Ale 12/12B	0.000	\$0.00	\$0.00	Specialty	MillerCoors
160	7231123012	Dos Equis Lager 12/12B	0.000	\$0.00	\$0.00	Imports	Heineken USA
161	8248812700	Becks NA 6/12B	0.000	\$0.00	\$0.00	Non Alcohol	Anheuser-Busch InBev
162	4257205715	Clausthaler NA 6/12B	0.000	\$0.00	\$0.00	Non Alcohol	Import
163	8992495432	Yuengling Black & Tan 6/12B	0.000	\$0.00	\$0.00	Premium	DG Yuengling & Sons
164	7289000478	Heineken 1/22B	0.000	\$0.00	\$0.00	Imports	Heineken USA
165	8769200269	Samuel Adams Rebel Rouser 6/12B	0.000	\$0.00	\$0.00	Micro	Boston Beer
166	7199070002	George Killian's Irish Red 6/12B	0.000	\$0.00	\$0.00	Specialty	MillerCoors
167	86273700000	Montauk Driftwood Ale 6/12C	0.000	\$0.00	\$0.00	Micro	Micro Breweries
168	8066095401	Coronita Extra 6/7B	0.000	\$0.00	\$0.00	Imports	Crown Imports LLC
169	7248002403	Schaefer 12/12C	0.000	\$0.00	\$0.00	Sub Premium	Pabst
170	3410031602	Milwaukee's Best 12/12C	0.000	\$0.00	\$0.00	Sub Premium	MillerCoors
171	1820022988	Bud Light Lime Raz-Ber-Rita 12/8C	0.000	\$0.00	\$0.00	FMB	Anheuser-Busch InBev
172	1820018992	Bud Light Platinum 12/12B	0.000	\$0.00	\$0.00	Specialty	Anheuser-Busch InBev
173	1820014991	Bud Light Lime 6/12B	0.000	\$0.00	\$0.00	Specialty	Anheuser-Busch InBev
174	8769200149	Angry Orchard Green Apple 6/12B	0.000	\$0.00	\$0.00	Cider	Boston Beer
175	85909300244	SixPoint The Crisp 6/12C	0.000	\$0.00	\$0.00	Micro	Micro Breweries
176	7199030078	Coors Light 18/12B	0.000	\$0.00	\$0.00	Premium	MillerCoors
177	8992423040	Yuengling Light Lager 12/12B	0.000	\$0.00	\$0.00	Premium	DG Yuengling & Sons
178	7143934450	Rolling Rock 12/12C	0.000	\$0.00	\$0.00	Sub Premium	Anheuser-Busch InBev
179	8769200017	Angry Orchard Variety Pack 12/12B	0.000	\$0.00	\$0.00	Cider	Boston Beer
180	7231163001	Pilsner Urquell 6/12B	0.000	\$0.00	\$0.00	Imports	MillerCoors
181	8769282102	Angry Orchard Crisp Apple 6/12B	0.000	\$0.00	\$0.00	Cider	Boston Beer
182	1820023989	Mixx Tail Hurricane 8/11.5AL	0.000	\$0.00	\$0.00	FMB	Anheuser-Busch InBev
183	7143934806	Rolling Rock 6/12B	0.000	\$0.00	\$0.00	Sub Premium	Anheuser-Busch InBev
184	86273700001	Montauk Summer Ale 6/12C	0.000	\$0.00	\$0.00	Micro	Micro Breweries
185	1820000834	Budweiser 6/12B	0.000	\$0.00	\$0.00	Premium	Anheuser-Busch InBev
186	8378322822	Sierra Nevada Seasonal 6/12B	0.000	\$0.00	\$0.00	Micro	Sierra Nevada
187	1820002992	O'Doul's Amber 6/12B	0.000	\$0.00	\$0.00	Non Alcohol	Anheuser-Busch InBev
188	72383000009	Lagunitas IPA 6/12B	0.000	\$0.00	\$0.00	Micro	Micro Breweries
189	1820000106	Bud Light 6/12C	0.000	\$0.00	\$0.00	Premium	Anheuser-Busch InBev

UNALLOCATED ITEMS/OPTIONAL ITEMS

5955.psa

UNALLOCATED SKU REPORT

	UPC	NAME	MVMT	Profit	Sales	Category	Manufacturer
190	81760601000	Captain Lawrence Pale Ale 6/12B	0.000	\$0.00	\$0.00	Micro	Micro Breweries
191	8382012393	Guinness Extra Stout 6/11B	0.000	\$0.00	\$0.00	Imports	Diageo
192	8769284102	Angry Orchard Apple Ginger 6/12B	0.000	\$0.00	\$0.00	Cider	Boston Beer
193	1820000157	O'Doul's 6/12C	0.000	\$0.00	\$0.00	Non Alcohol	Anheuser-Busch InBev
194	83972800411	Big Flats Lager Beer 6/12C	0.000	\$0.00	\$0.00	Sub Premium	Micro Breweries
195	7199030005	Coors Light 6/12B	0.000	\$0.00	\$0.00	Premium	MillerCoors
196	1820005989	Michelob Ultra 6/12B	0.000	\$0.00	\$0.00	Specialty	Anheuser-Busch InBev
197	8769286102	Angry Orchard Traditional Dry 6/12B	0.000	\$0.00	\$0.00	Cider	Boston Beer
198	85909300243	SixPoint Bengali 6/12C	0.000	\$0.00	\$0.00	Micro	Micro Breweries
199	2210000004	Pabst 1/24C	0.000	\$0.00	\$0.00	Sub Premium	Pabst
200	8992420111	Yuengling Light Lager 6/12B	0.000	\$0.00	\$0.00	Premium	DG Yuengling & Sons
201	8378333100	Sierra Nevada Torpedo Extra IPA 6/12B	0.000	\$0.00	\$0.00	Micro	Sierra Nevada
202	8857333101	Shiner Bock 6/12B	0.000	\$0.00	\$0.00	Micro	Gambrinus