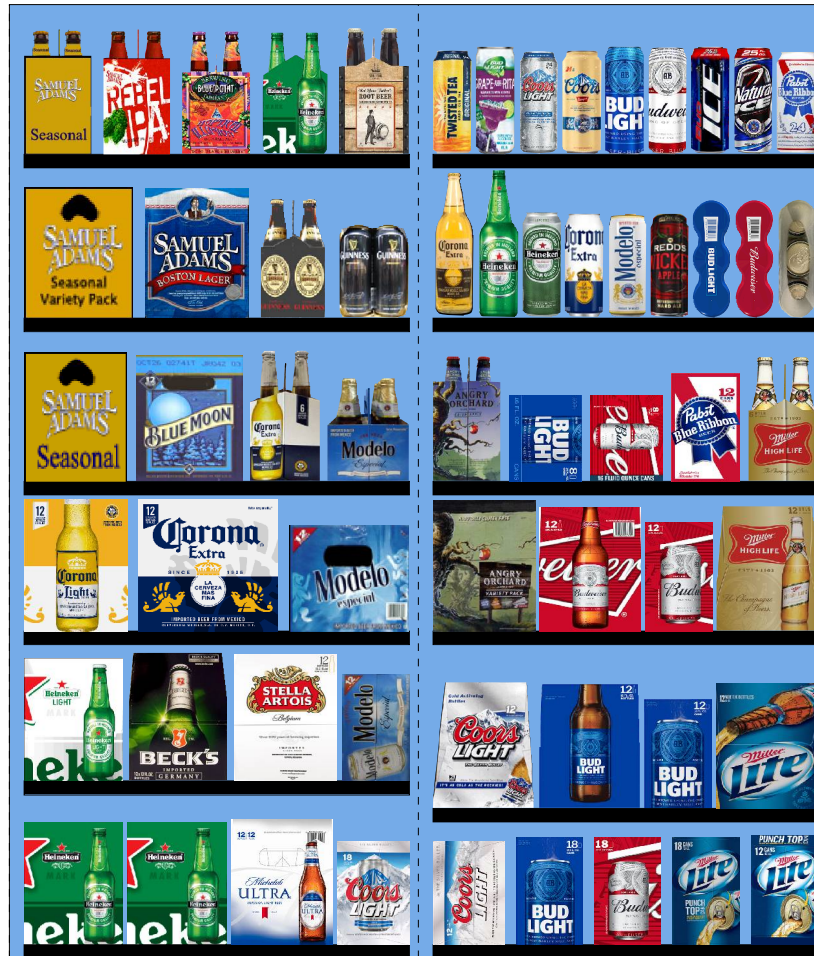


5135.psa For Validation Purposes Only NOT FINAL



Printed: 4/14/2016

Traffic Flow Left-right

POG: 5135.psa



POG Size: 5'0.00

Segments 1 - 2 of 2

Page: 1

SCHEMATIC BACKING REPORT

5135.psa

Planogram: 5135.psa

Segment #1 : Shelf #6 DEPTH: 36 in WIDTH: 28 in DISTANCE FROM TOP OF BASE SHELF TO BOTTOM OF SHELF: 0.00 in

POS	# FAC	UPC	ID	NAME	CASES	CAPACITY	UNITS HIGH	DOS	MVMT
21	2	7289000016	7289000016	Heineken 12/12B	3.0	6	1	1.6	26.5
22	1	1820005990	1820005990	Michelob Ultra 12/12B	1.5	3	1	5.6	3.7
23	1	7199030017	7199030017	Coors Light 18/12C	2.0	2	1	2.4	6.0

Segment #1 : Shelf #5 DEPTH: 36 in WIDTH: 28 in DISTANCE FROM TOP OF BASE SHELF TO BOTTOM OF SHELF: 12.00 in

POS	# FAC	UPC	ID	NAME	CASES	CAPACITY	UNITS HIGH	DOS	MVMT
17	1	7289000159	7289000159	Heineken Premium Light 12/12B	1.5	3	1	5.5	3.8
18	1	8248812300	8248812300	Becks 12/12B	1.5	3	1	1.6	13.5
19	1	78615000014	78615000014	Stella Artois 12/11B	1.5	3	1	7.0	3.0
20	1	8066095715	8066095715	Modelo 12/12C	1.5	3	1	9.7	2.2

Segment #1 : Shelf #4 DEPTH: 36 in WIDTH: 28 in DISTANCE FROM TOP OF BASE SHELF TO BOTTOM OF SHELF: 23.00 in

POS	# FAC	UPC	ID	NAME	CASES	CAPACITY	UNITS HIGH	DOS	MVMT
14	1	8066095675	8066095675	Corona Light 12/12B	1.5	3	1	6.1	3.4
15	1	8066095615	8066095615	Corona Extra 12/12B	2.0	4	1	1.5	18.5
16	1	8066095757	8066095757	Modelo 12/12B	1.0	2	1	45.5	0.3

Segment #1 : Shelf #3 DEPTH: 36 in WIDTH: 28 in DISTANCE FROM TOP OF BASE SHELF TO BOTTOM OF SHELF: 34.00 in

POS	# FAC	UPC	ID	NAME	CASES	CAPACITY	UNITS HIGH	DOS	MVMT
10	1	8769201103	8769201103	Samuel Adams Seasonal 12/12B	1.5	3	1	14.4	1.5
11	1	7199009516	7199009516	Blue Moon Belgian White Ale 12/12B	1.5	3	1	7.4	2.8
12	1	8066095605	8066095605	Corona Extra 6/12B	1.0	4	1	5.1	5.5
13	1	8066095765	8066095765	Modelo 6/12B	1.0	4	1	0.0	0.0

Segment #1 : Shelf #2 DEPTH: 36 in WIDTH: 28 in DISTANCE FROM TOP OF BASE SHELF TO BOTTOM OF SHELF: 46.00 in

POS	# FAC	UPC	ID	NAME	CASES	CAPACITY	UNITS HIGH	DOS	MVMT
6	1	8769229103	8769229103	Samuel Adams Ssnl Variety-Mix Pk 12/12B	1.5	3	1	9.1	2.3
7	1	8769210014	8769210014	Samuel Adams Boston Lgr 12/12B	1.5	3	1	19.3	1.1
8	1	8382012393	8382012393	Guinness Extra Stout 6/11B	1.3	5	1	21.7	1.6
9	1	8382012360	8382012360	Guinness Draught 4/15C	1.0	6	1	27.3	1.5

Segment #1 : Shelf #1 DEPTH: 36 in WIDTH: 28 in DISTANCE FROM TOP OF BASE SHELF TO BOTTOM OF SHELF: 58.00 in

POS	# FAC	UPC	ID	NAME	CASES	CAPACITY	UNITS HIGH	DOS	MVMT
1	1	8769230050	8769230050	Samuel Adams Seasonal 6/12B	1.0	4	1	11.7	2.4
2	1	8769200127	8769200127	Samuel Adams Rebel IPA 6/12B	1.0	4	1	11.4	2.5
3	1	68174511102	68174511102	Blue Point Hoptical Illusion 6/12B	1.0	4	1	0.0	0.0
4	1	7289000011	7289000011	Heineken 6/12B	1.0	4	1	11.6	2.4
5	1	9200002000	9200002000	Small Town Not Your Fathers RtBr 6/12B	1.0	4	1	9.1	3.1

Segment #2 : Shelf #6 DEPTH: 36 in WIDTH: 28 in DISTANCE FROM TOP OF BASE SHELF TO BOTTOM OF SHELF: 0.00 in

POS	# FAC	UPC	ID	NAME	CASES	CAPACITY	UNITS HIGH	DOS	MVMT
55	1	7199000048	7199000048	Coors Light 12/12C	1.5	3	1	9.5	2.2
56	1	1820053218	1820053218	Bud Light 18/12C	2.0	2	1	5.0	2.8
57	1	1820011218	1820011218	Budweiser 18/12C	2.0	2	1	3.2	4.3
58	1	3410057340	3410057340	Miller Lite 18/12C	2.0	2	1	11.3	1.2

SCHEMATIC BACKING REPORT

5135.psa

59 1 3410057636 3410057636 Miller Lite 12/12C 1.5 3 1 18.7 1.1

Segment #2 : Shelf #5 DEPTH: 36 in WIDTH: 28 in DISTANCE FROM TOP OF BASE SHELF TO BOTTOM OF SHELF: 10.00 in

POS	# FAC	UPC	ID	NAME	CASES	CAPACITY	UNITS HIGH	DOS	MVMT
51	1	7199030069	7199030069	Coors Light 12/12B	1.5	3	1	30.0	0.7
52	1	1820000769	1820000769	Bud Light 12/12B	1.5	3	1	4.2	5.0
53	1	1820053047	1820053047	Bud Light 12/12C	1.5	3	1	3.0	7.1
54	1	3410057509	3410057509	Miller Lite 12/12B	1.5	3	1	17.9	1.2

Segment #2 : Shelf #4 DEPTH: 36 in WIDTH: 28 in DISTANCE FROM TOP OF BASE SHELF TO BOTTOM OF SHELF: 23.00 in

POS	# FAC	UPC	ID	NAME	CASES	CAPACITY	UNITS HIGH	DOS	MVMT
47	1	8769200017	8769200017	Angry Orchard Variety Pack 12/12B	1.5	3	1	18.2	1.2
48	1	1820000771	1820000771	Budweiser 12/12B	1.5	3	1	5.1	4.1
49	1	1820011047	1820011047	Budweiser 12/12C	1.5	3	1	3.3	6.5
50	1	3410001509	3410001509	Miller High Life 12/12B	1.5	3	1	3.7	5.7

Segment #2 : Shelf #3 DEPTH: 36 in WIDTH: 28 in DISTANCE FROM TOP OF BASE SHELF TO BOTTOM OF SHELF: 34.00 in

POS	# FAC	UPC	ID	NAME	CASES	CAPACITY	UNITS HIGH	DOS	MVMT
42	1	8769282102	8769282102	Angry Orchard Crisp Apple 6/12B	1.0	4	1	8.5	3.3
43	1	1820008989	1820008989	Bud Light 8/16C	1.0	3	1	0.0	0.0
44	1	1820008981	1820008981	Budweiser 8/16C	1.0	3	1	0.0	0.0
45	1	2210000170	2210000170	Pabst 12/12C	1.5	3	1	5.3	4.0
46	1	3410001505	3410001505	Miller High Life 6/12B	1.0	4	1	0.0	0.0

Segment #2 : Shelf #2 DEPTH: 36 in WIDTH: 28 in DISTANCE FROM TOP OF BASE SHELF TO BOTTOM OF SHELF: 46.00 in

POS	# FAC	UPC	ID	NAME	CASES	CAPACITY	UNITS HIGH	DOS	MVMT
33	1	8066095641	8066095641	Corona Extra 1/24B	0.9	11	1	0.0	0.0
34	1	7289000478	7289000478	Heineken 1/22B	1.0	12	1	0.0	0.0
35	1	7289000119	7289000119	Heineken 1/24C	1.0	12	1	0.0	0.0
36	1	8066095643	8066095643	Corona Extra 1/24C	1.0	12	1	5600.0	0.0
37	1	8066095721	8066095721	Modelo 1/24C	1.0	12	1	0.0	0.0
38	1	3410000323	3410000323	Redd's Wicked Apple 1/24C	1.0	12	1	0.0	0.0
39	1	1820021986	1820021986	Bud Light 3/25C	0.8	4	1	8.1	3.5
40	1	1820021985	1820021985	Budweiser 3/25C	0.8	4	1	4.7	5.9
41	1	7199030120	7199030120	Coors Light 3/24C	0.8	4	1	6.2	4.5

Segment #2 : Shelf #1 DEPTH: 36 in WIDTH: 28 in DISTANCE FROM TOP OF BASE SHELF TO BOTTOM OF SHELF: 58.00 in

POS	# FAC	UPC	ID	NAME	CASES	CAPACITY	UNITS HIGH	DOS	MVMT
24	1	8769283231	8769283231	Twisted Tea 1/24C	1.0	12	1	0.0	0.0
25	1	1820025833	1820025833	Bud Light Lime Grape-A-Rita 1/25C	0.8	12	1	0.0	0.0
26	1	7199030065	7199030065	Coors Light 1/24C	1.0	12	1	3652.2	0.0
27	1	7199010071	7199010071	Coors 1/24C	1.0	12	1	0.0	0.0
28	1	1820025001	1820025001	Bud Light 1/25C	0.8	12	1	0.0	0.0
29	1	1820025000	1820025000	Budweiser 1/25C	0.8	12	1	10.3	8.1
30	1	1820025006	1820025006	Bud Ice 1/25C	0.8	12	1	0.0	0.0
31	1	1820025008	1820025008	Natural Ice 1/25C	0.8	12	1	1866.7	0.0
32	1	2210000004	2210000004	Pabst 1/24C	1.0	12	1	0.0	0.0

SKUs on Planogram: 59

UNALLOCATED ITEMS/OPTIONAL ITEMS

5135.psa

UNALLOCATED SKU REPORT

	UPC	NAME	MVMT	Profit	Sales	Category	Manufacturer
1	8378337521	Sierra Nevada Pale Ale 6/12B	1.692	\$0.00	\$0.00	Micro	Sierra Nevada
2	3410031602	Milwaukee's Best 12/12C	1.308	\$0.00	\$0.00	Sub Premium	MillerCoors
3	3410051605	Leinenkugel Seasonal Shandy 6/12B	1.077	\$0.00	\$0.00	Specialty	MillerCoors
4	1820018993	Bud Light Platinum 6/12B	1.000	\$0.00	\$0.00	Specialty	Anheuser-Busch InBev
5	8200072751	Smirnoff Ice Green Apple 6/11B	1.000	\$0.00	\$0.00	FMB	Diageo
6	1820015047	Natural Light 12/12C	0.923	\$0.00	\$0.00	Sub Premium	Anheuser-Busch InBev
7	8200072754	Smirnoff Ice Raspberry 6/11B	0.923	\$0.00	\$0.00	FMB	Diageo
8	7861500001	Stella Artois 6/11B	0.846	\$0.00	\$0.00	Imports	Anheuser-Busch InBev
9	8834510151	Strongbow Gold Hard Cider 6/11B	0.769	\$0.00	\$0.00	Cider	Heineken USA
10	1820000833	Bud Light 6/12B	0.708	\$0.00	\$0.00	Premium	Anheuser-Busch InBev
11	1820005989	Michelob Ultra 6/12B	0.692	\$0.00	\$0.00	Specialty	Anheuser-Busch InBev
12	63598525945	Mikes HARDER Lemonade 12/8C	0.692	\$0.00	\$0.00	FMB	Mark Anthony Brands
13	1820022988	Bud Light Lime Raz-Ber-Rita 12/8C	0.692	\$0.00	\$0.00	FMB	Anheuser-Busch InBev
14	63598510062	Mikes Hard Lemonade 6/11B	0.692	\$0.00	\$0.00	FMB	Mark Anthony Brands
15	1820000834	Budweiser 6/12B	0.672	\$0.00	\$0.00	Premium	Anheuser-Busch InBev
16	1820000964	Natural Ice 12/12C	0.658	\$0.00	\$0.00	Sub Premium	Anheuser-Busch InBev
17	8769283102	Twisted Tea 6/12B	0.615	\$0.00	\$0.00	FMB	Boston Beer
18	1820014990	Bud Light Lime 12/12B	0.554	\$0.00	\$0.00	Specialty	Anheuser-Busch InBev
19	7199030005	Coors Light 6/12B	0.542	\$0.00	\$0.00	Premium	MillerCoors
20	8200072908	Smirnoff Ice Party Pack 12/11B	0.538	\$0.00	\$0.00	FMB	Diageo
21	63598525948	Mikes HARDER Blk Cherry Lemonade ...	0.538	\$0.00	\$0.00	FMB	Mark Anthony Brands
22	8992427896	Yuengling Traditional Lager 12/12B	0.529	\$0.00	\$0.00	Premium	DG Yuengling & Sons
23	1820018992	Bud Light Platinum 12/12B	0.469	\$0.00	\$0.00	Specialty	Anheuser-Busch InBev
24	1820022992	Bud Light Lime-A-Rita Seasonal 12/8C	0.462	\$0.00	\$0.00	FMB	Anheuser-Busch InBev
25	3410057505	Miller Lite 6/12B	0.462	\$0.00	\$0.00	Premium	MillerCoors
26	8066095625	Corona Light 6/12B	0.385	\$0.00	\$0.00	Imports	Crown Imports LLC
27	63598560611	Mikes Hard Cranberry Lemonade 6/11B	0.385	\$0.00	\$0.00	FMB	Mark Anthony Brands
28	1820017993	Shock Top Seasonal 6/12B	0.385	\$0.00	\$0.00	Specialty	Anheuser-Busch InBev
29	3410051607	Leinenkugel Seasonal Shandy 12/12B	0.385	\$0.00	\$0.00	Specialty	MillerCoors
30	3410008716	Redd's Apple Ale 6/12B	0.337	\$0.00	\$0.00	Specialty	MillerCoors
31	8200075748	Smirnoff Ice Screwdriver 6/11B	0.308	\$0.00	\$0.00	FMB	Diageo
32	8992427891	Yuengling Traditional Lager 6/12B	0.308	\$0.00	\$0.00	Premium	DG Yuengling & Sons
33	1820020994	Bud Light Platinum 12/12C SC	0.308	\$0.00	\$0.00	Specialty	Anheuser-Busch InBev
34	7248002403	Schaefer 12/12C	0.308	\$0.00	\$0.00	Sub Premium	Pabst
35	1820024001	Stella Artois Cidre 6/12B	0.254	\$0.00	\$0.00	Cider	Anheuser-Busch InBev
36	8200072385	Smirnoff Ice 6/11B	0.253	\$0.00	\$0.00	FMB	Diageo
37	1820019987	Bud Light Lime-A-Rita 12/8C	0.237	\$0.00	\$0.00	FMB	Anheuser-Busch InBev
38	1820000016	Budweiser 6/12C	0.231	\$0.00	\$0.00	Premium	Anheuser-Busch InBev
39	8992429386	Yuengling Black & Tan 12/12B	0.231	\$0.00	\$0.00	Premium	DG Yuengling & Sons
40	3410008813	Miller Fortune 12/12B	0.231	\$0.00	\$0.00	Specialty	MillerCoors
41	8248812345	Becks 6/12B	0.231	\$0.00	\$0.00	Imports	Anheuser-Busch InBev
42	8066095695	Corona Extra 12/12C	0.154	\$0.00	\$0.00	Imports	Crown Imports LLC
43	3410058874	Leinenkugel Heritage Seasonal 12/12B	0.154	\$0.00	\$0.00	Specialty	MillerCoors
44	7289000020	Heineken 12/12C	0.154	\$0.00	\$0.00	Imports	Heineken USA
45	7289010011	Amstel Light 6/12B	0.154	\$0.00	\$0.00	Imports	Heineken USA
46	3410000340	Redd's Variety Pack 12/12B	0.154	\$0.00	\$0.00	Specialty	MillerCoors
47	8982690033	Tecate 12/12C	0.154	\$0.00	\$0.00	Imports	Heineken USA
48	7231123012	Dos Equis Lager 12/12B	0.154	\$0.00	\$0.00	Imports	Heineken USA
49	1820022989	Bud Light Lime Mang-O-Rita 12/8C	0.132	\$0.00	\$0.00	FMB	Anheuser-Busch InBev
50	63598506744	Mikes Hard Black Cherry Lemonade 6/...	0.107	\$0.00	\$0.00	FMB	Mark Anthony Brands
51	1820016989	Shock Top Raspberry Wheat 6/12B	0.087	\$0.00	\$0.00	Specialty	Anheuser-Busch InBev
52	1820096721	Michelob Ultra 18/12C SC	0.077	\$0.00	\$0.00	Specialty	Anheuser-Busch InBev
53	1820000106	Bud Light 6/12C	0.077	\$0.00	\$0.00	Premium	Anheuser-Busch InBev
54	3410049805	Leinenkugel Sunset Wheat Ale 6/12B	0.077	\$0.00	\$0.00	Specialty	MillerCoors
55	7289000188	Heineken Premium Light 12/12C	0.077	\$0.00	\$0.00	Imports	Heineken USA
56	7199030104	Coors Light 9/16AL	0.077	\$0.00	\$0.00	Premium	MillerCoors
57	63598506074	Mikes Hard Seasonal 6/11B	0.069	\$0.00	\$0.00	FMB	Mark Anthony Brands
58	3410008730	Redd's Strawberry Ale 6/12B	0.062	\$0.00	\$0.00	Specialty	MillerCoors
59	1497450009	Woodchuck Amber 6/12B	0.038	\$0.00	\$0.00	Cider	Vermont Hard Cider Co...
60	1820025533	Bud Light Lime Mang-O-Rita 1/25C	0.036	\$0.00	\$0.00	FMB	Anheuser-Busch InBev
61	3410000355	Miller Lite 1/24C	0.025	\$0.00	\$0.00	Premium	MillerCoors
62	8769210012	Samuel Adams Boston Lgr 6/12B	0.019	\$0.00	\$0.00	Micro	Boston Beer
63	1820020993	Bud Light Lime Straw-Ber-Rita 12/8C	0.014	\$0.00	\$0.00	FMB	Anheuser-Busch InBev

UNALLOCATED ITEMS/OPTIONAL ITEMS

5135.psa

UNALLOCATED SKU REPORT

	UPC	NAME	MVMT	Profit	Sales	Category	Manufacturer
64	8780000049	Smith & Forge Hard Cider 4/16C	0.006	\$0.00	\$0.00	Cider	MillerCoors
65	7199009511	Blue Moon Belgian White Ale 6/12B	0.004	\$0.00	\$0.00	Specialty	MillerCoors
66	7199047712	Keystone Ice 1/24C	0.004	\$0.00	\$0.00	Sub Premium	MillerCoors
67	1820025538	Bud Light Lime-A-Rita Seasonal 1/25C	0.003	\$0.00	\$0.00	FMB	Anheuser-Busch InBev
68	85998900516	Greenport Harbor Otherside IPA 6/12B	0.000	\$0.00	\$0.00	Micro	Micro Breweries
69	3410008722	Redd's Apple Ale 12/12B	0.000	\$0.00	\$0.00	Specialty	MillerCoors
70	1820012982	Land Shark Lager 6/12B	0.000	\$0.00	\$0.00	Specialty	Anheuser-Busch InBev
71	78036980012	Shipyard Seasonal Ale 6/12B	0.000	\$0.00	\$0.00	Micro	Micro Breweries
72	8769200033	Angry Orchard Crisp Apple 12/12B	0.000	\$0.00	\$0.00	Cider	Boston Beer
73	3410008755	Redd's Wicked Black Cherry 12/10C	0.000	\$0.00	\$0.00	Specialty	MillerCoors
74	7199076400	George Killian's Irish Red 12/12B	0.000	\$0.00	\$0.00	Specialty	MillerCoors
75	8857370002	Shiner Family Reunion Mix 6/12B	0.000	\$0.00	\$0.00	Micro	Gambrinus
76	8769259102	Samuel Adams Latitude 48 IPA 6/12B	0.000	\$0.00	\$0.00	Micro	Boston Beer
77	9200002013	Small Town Not Your Fathers Gngr 6/1...	0.000	\$0.00	\$0.00	Micro	Pabst
78	3061300071	Brooklyn Variety Pack 12/12B	0.000	\$0.00	\$0.00	Micro	Micro Breweries
79	8797502650	Sapporo Draft 1/22C	0.000	\$0.00	\$0.00	Imports	Import
80	85998900504	Greenport Harbor Harbor Ale 6/12B	0.000	\$0.00	\$0.00	Micro	Micro Breweries
81	7199009532	Blue Moon Seasonal 6/12B	0.000	\$0.00	\$0.00	Specialty	MillerCoors
82	7289010016	Amstel Light 12/12B	0.000	\$0.00	\$0.00	Imports	Heineken USA
83	1820021998	Shock Top Honeycrisp Apple Wheat 6/...	0.000	\$0.00	\$0.00	Specialty	Anheuser-Busch InBev
84	76227407131	Bass Pale Ale 6/12B	0.000	\$0.00	\$0.00	Imports	Anheuser-Busch InBev
85	4182700146	Harpoon Seasonal 6/12B	0.000	\$0.00	\$0.00	Micro	Harpoon
86	8769200149	Angry Orchard Green Apple 6/12B	0.000	\$0.00	\$0.00	Cider	Boston Beer
87	7089701331	Fosters Lager 1/25C	0.000	\$0.00	\$0.00	Imports	MillerCoors
88	3410008749	Redd's Wicked Mango 12/10C	0.000	\$0.00	\$0.00	Specialty	MillerCoors
89	60940872979	Port Jeff Party Boat IPA 6/12C	0.000	\$0.00	\$0.00	Micro	Micro Breweries
90	79837312125	Magic Hat Variety Pack 12/12B	0.000	\$0.00	\$0.00	Micro	North American Breweri...
91	3410008810	Miller Fortune 6/12B	0.000	\$0.00	\$0.00	Specialty	MillerCoors
92	1820079047	O'Doul's 12/12C	0.000	\$0.00	\$0.00	Non Alcohol	Anheuser-Busch InBev
93	8378322812	Sierra Nevada Seasonal 12/12B	0.000	\$0.00	\$0.00	Micro	Sierra Nevada
94	4182700712	Harpoon IPA 12/12B	0.000	\$0.00	\$0.00	Micro	Harpoon
95	8382010403	Guinness Draught 12/11B	0.000	\$0.00	\$0.00	Imports	Diageo
96	63598512998	Mikes Hard Variety Pack 12/11B	0.000	\$0.00	\$0.00	FMB	Mark Anthony Brands
97	8378333100	Sierra Nevada Torpedo Extra IPA 6/12B	0.000	\$0.00	\$0.00	Micro	Sierra Nevada
98	3410057023	Miller Lite 9/16AL	0.000	\$0.00	\$0.00	Premium	MillerCoors
99	7199009561	Blue Moon White IPA 6/12B	0.000	\$0.00	\$0.00	Specialty	MillerCoors
100	7199009584	Blue Moon Cinnamon Horchata Ale 6/1...	0.000	\$0.00	\$0.00	Specialty	MillerCoors
101	68715190007	Southampton Double White Ale 6/12B	0.000	\$0.00	\$0.00	Micro	Micro Breweries
102	78615000036	Hoegaarden 6/11B	0.000	\$0.00	\$0.00	Imports	Anheuser-Busch InBev
103	88715100051	Traveler Seasonal Shandy 6/12B	0.000	\$0.00	\$0.00	Micro	Boston Beer
104	1820025505	Bud Light Lime Straw-Ber-Rita 1/25C	0.000	\$0.00	\$0.00	FMB	Anheuser-Busch InBev
105	1820013986	Shock Top Belgian White Ale 6/12B	0.000	\$0.00	\$0.00	Specialty	Anheuser-Busch InBev
106	8769275102	Twisted Tea Half & Half 6/12B	0.000	\$0.00	\$0.00	FMB	Boston Beer
107	1820019991	Shock Top Seasonal 12/12B	0.000	\$0.00	\$0.00	Specialty	Anheuser-Busch InBev
108	7231133140	Dos Equis Ambar 12/12B	0.000	\$0.00	\$0.00	Imports	Heineken USA
109	63848900029	Dogfish Head 60 Minute IPA 6/12B	0.000	\$0.00	\$0.00	Micro	Micro Breweries
110	1820023984	Oculto 6/12B	0.000	\$0.00	\$0.00	Micro	Anheuser-Busch InBev
111	1820021979	Budweiser 8/16AL	0.000	\$0.00	\$0.00	Premium	Anheuser-Busch InBev
112	79837312606	Magic Hat Seasonal 6/12B	0.000	\$0.00	\$0.00	Micro	North American Breweri...
113	7143934450	Rolling Rock 12/12C	0.000	\$0.00	\$0.00	Sub Premium	Anheuser-Busch InBev
114	3410008746	Redd's Green Apple 6/12B	0.000	\$0.00	\$0.00	Specialty	MillerCoors
115	18195400002	Peroni Nastro Azzuro 6/12B	0.000	\$0.00	\$0.00	Imports	MillerCoors
116	1820012998	Land Shark Lager 12/12B	0.000	\$0.00	\$0.00	Specialty	Anheuser-Busch InBev
117	8382023473	Harp Lager 6/12B	0.000	\$0.00	\$0.00	Imports	Diageo
118	8769200255	Angry Orchard Hop N Mad 6/12B	0.000	\$0.00	\$0.00	Cider	Boston Beer
119	86273700001	Montauk Summer Ale 6/12C	0.000	\$0.00	\$0.00	Micro	Micro Breweries
120	73692011439	Goose Island India Pale Ale 4/16C	0.000	\$0.00	\$0.00	Micro	Anheuser-Busch InBev
121	1820017991	Shock Top Sampler 12/12B	0.000	\$0.00	\$0.00	Specialty	Anheuser-Busch InBev
122	1820002992	O'Doul's Amber 6/12B	0.000	\$0.00	\$0.00	Non Alcohol	Anheuser-Busch InBev
123	1820006991	Michelob Ultra 12/12C SC	0.000	\$0.00	\$0.00	Specialty	Anheuser-Busch InBev
124	7231163012	Dos Equis Lager 6/12B	0.000	\$0.00	\$0.00	Imports	Heineken USA
125	8769200129	Samuel Adams Rebel IPA 12/12B	0.000	\$0.00	\$0.00	Micro	Boston Beer
126	7167007106	Saranac Twelve Beers 12/12B	0.000	\$0.00	\$0.00	Micro	FX Matt

UNALLOCATED ITEMS/OPTIONAL ITEMS

5135.psa

UNALLOCATED SKU REPORT

	UPC	NAME	MVMT	Profit	Sales	Category	Manufacturer
127	88715100195	Coney Island Overpass IPA 6/12B	0.000	\$0.00	\$0.00	Micro	Boston Beer
128	68174521122	Blue Point Variety 12/12B	0.000	\$0.00	\$0.00	Micro	Anheuser-Busch InBev
129	8382012368	Guinness Draught 8/15C	0.000	\$0.00	\$0.00	Imports	Diageo
130	8378337512	Sierra Nevada Pale Ale 12/12B	0.000	\$0.00	\$0.00	Micro	Sierra Nevada
131	8769200004	Samuel Adams Seasonal Select 6/12B	0.000	\$0.00	\$0.00	Micro	Boston Beer
132	8769284102	Angry Orchard Apple Ginger 6/12B	0.000	\$0.00	\$0.00	Cider	Boston Beer
133	1820097007	Bud Light Lime Lemon-Ade-Rita 12/8C	0.000	\$0.00	\$0.00	FMB	Anheuser-Busch InBev
134	1820020998	Bud Light 8/16AL	0.000	\$0.00	\$0.00	Premium	Anheuser-Busch InBev
135	8992423040	Yuengling Light Lager 12/12B	0.000	\$0.00	\$0.00	Premium	DG Yuengling & Sons
136	3061300001	Brooklyn Lager 6/12B	0.000	\$0.00	\$0.00	Micro	Micro Breweries
137	88715100213	Coney Island Hard Root Beer 6/12B	0.000	\$0.00	\$0.00	Micro	Boston Beer
138	8769227102	Samuel Adams Cherry Wht 6/12B	0.000	\$0.00	\$0.00	Micro	Boston Beer
139	68174511130	Blue Point Blueberry Ale 6/12B	0.000	\$0.00	\$0.00	Micro	Anheuser-Busch InBev
140	7289000158	Heineken Premium Light 6/12B	0.000	\$0.00	\$0.00	Imports	Heineken USA
141	7167084200	Saranac Adirondack Trail Mix 6/12B	0.000	\$0.00	\$0.00	Micro	FX Matt
142	8382010401	Guinness Draught 6/11B	0.000	\$0.00	\$0.00	Imports	Diageo
143	8382012418	Guinness Nitro IPA 6/11C	0.000	\$0.00	\$0.00	Imports	
144	68174541116	Blue Point Toasted Lager 4/16C	0.000	\$0.00	\$0.00	Micro	Anheuser-Busch InBev
145	85909300243	SixPoint Bengali 6/12C	0.000	\$0.00	\$0.00	Micro	Micro Breweries
146	1820025005	Budweiser Select 1/25C	0.000	\$0.00	\$0.00	Premium	Anheuser-Busch InBev
147	7289000174	Heineken 1/169MBR	0.000	\$0.00	\$0.00	Imports	Heineken USA
148	64286090024	Founders All Day IPA 15/12C	0.000	\$0.00	\$0.00	Micro	Micro Breweries
149	7231163011	Dos Equis Ambar 6/12B	0.000	\$0.00	\$0.00	Imports	Heineken USA
150	88715100094	Coney Island Mermaid Pilsner 6/12B	0.000	\$0.00	\$0.00	Micro	Boston Beer
151	63625177612	Stone IPA 6/12B	0.000	\$0.00	\$0.00	Micro	Micro Breweries
152	9200002009	Small Town Not Your Fathers RtBr 6/1...	0.000	\$0.00	\$0.00	Micro	Pabst
153	1820000031	Natural Light 6/12C	0.000	\$0.00	\$0.00	Sub Premium	Anheuser-Busch InBev
154	4182700076	Harpoon IPA 6/12B	0.000	\$0.00	\$0.00	Micro	Harpoon
155	86273700000	Montauk Driftwood Ale 6/12C	0.000	\$0.00	\$0.00	Micro	Micro Breweries
156	8248812700	Becks NA 6/12B	0.000	\$0.00	\$0.00	Non Alcohol	Anheuser-Busch InBev
157	7143934806	Rolling Rock 6/12B	0.000	\$0.00	\$0.00	Sub Premium	Anheuser-Busch InBev
158	81760601000	Captain Lawrence Pale Ale 6/12B	0.000	\$0.00	\$0.00	Micro	Micro Breweries
159	64286020024	Founders All Day IPA 6/12B	0.000	\$0.00	\$0.00	Micro	Micro Breweries
160	8378322822	Sierra Nevada Seasonal 6/12B	0.000	\$0.00	\$0.00	Micro	Sierra Nevada
161	79837312123	Magic Hat #9 12/12B	0.000	\$0.00	\$0.00	Micro	North American Breweri...
162	3410000349	Redd's Wicked Mango 1/24C	0.000	\$0.00	\$0.00	Specialty	MillerCoors
163	1820024008	Stella Artois Gft Pk 1/25B	0.000	\$0.00	\$0.00	Imports	Anheuser-Busch InBev
164	1820000784	O'Doul's 6/12B	0.000	\$0.00	\$0.00	Non Alcohol	Anheuser-Busch InBev
165	7199000008	Coors Light 6/12C	0.000	\$0.00	\$0.00	Premium	MillerCoors
166	72383000009	Lagunitas IPA 6/12B	0.000	\$0.00	\$0.00	Micro	Micro Breweries
167	4182700012	Harpoon Mix Pack 12/12B	0.000	\$0.00	\$0.00	Micro	Harpoon
168	1820015981	Shock Top Belgian White Ale 12/12B	0.000	\$0.00	\$0.00	Specialty	Anheuser-Busch InBev
169	8834510005	Newcastle Brown Ale 6/12B	0.000	\$0.00	\$0.00	Imports	Heineken USA
170	7089718331	Fosters Premium Ale 1/25C	0.000	\$0.00	\$0.00	Imports	MillerCoors
171	8382056793	Red Stripe 6/12B	0.000	\$0.00	\$0.00	Imports	Diageo
172	8066095401	Coronita Extra 6/7B	0.000	\$0.00	\$0.00	Imports	Crown Imports LLC
173	8769200079	Angry Orchard Seasonal 6/12B	0.000	\$0.00	\$0.00	Cider	Boston Beer
174	85114800500	Great South Bay Blood Orange 6/12B	0.000	\$0.00	\$0.00	Micro	Micro Breweries
175	73692011139	Goose Island Seasonal Sampler 12/12B	0.000	\$0.00	\$0.00	Micro	Anheuser-Busch InBev
176	8857333101	Shiner Bock 6/12B	0.000	\$0.00	\$0.00	Micro	Gambrinus
177	85114800506	Great South Bay Seasonal 6/12B	0.000	\$0.00	\$0.00	Micro	Micro Breweries
178	68174512252	Blue Point Mosaic Session IPA 4/16C	0.000	\$0.00	\$0.00	Micro	Anheuser-Busch InBev
179	86273700003	Montauk Session IPA 6/12C	0.000	\$0.00	\$0.00	Micro	Micro Breweries
180	64286020007	Founders Dirty Bastard 6/12B	0.000	\$0.00	\$0.00	Micro	Micro Breweries
181	72383000020	Lagunitas A Little Sumpin Sumpin 6/12B	0.000	\$0.00	\$0.00	Micro	Micro Breweries
182	79603011493	Kona Castaway IPA 6/12B	0.000	\$0.00	\$0.00	Micro	Anheuser-Busch InBev
183	7199009536	Blue Moon Seasonal 12/12B	0.000	\$0.00	\$0.00	Specialty	MillerCoors
184	3061300053	Brooklyn Seasonal 6/12B	0.000	\$0.00	\$0.00	Micro	Micro Breweries
185	78624311990	Flying Dog Raging Btch Belgn Ale 6/12B	0.000	\$0.00	\$0.00	Micro	Micro Breweries
186	3410058805	Leinenkugel Heritage Seasonal 6/12B	0.000	\$0.00	\$0.00	Specialty	MillerCoors
187	85909300242	SixPoint Sweet Action 6/12C	0.000	\$0.00	\$0.00	Micro	Micro Breweries
188	8992495432	Yuengling Black & Tan 6/12B	0.000	\$0.00	\$0.00	Premium	DG Yuengling & Sons
189	76227407531	Bass Pale Ale 12/12B	0.000	\$0.00	\$0.00	Imports	Anheuser-Busch InBev

UNALLOCATED ITEMS/OPTIONAL ITEMS

5135.psa

UNALLOCATED SKU REPORT

	UPC	NAME	MVMT	Profit	Sales	Category	Manufacturer
190	8382018132	Guinness Blonde 6/12B	0.000	\$0.00	\$0.00	Imports	Diageo
191	79837312602	Magic Hat #9 6/12B	0.000	\$0.00	\$0.00	Micro	North American Breweri...
192	1820014991	Bud Light Lime 6/12B	0.000	\$0.00	\$0.00	Specialty	Anheuser-Busch InBev
193	85998900522	Greenport Harbor Seasonal 6/12B	0.000	\$0.00	\$0.00	Micro	Micro Breweries
194	7289000000	Heineken 6/12C	0.000	\$0.00	\$0.00	Imports	Heineken USA
195	3410015509	Miller 64 12/12B	0.000	\$0.00	\$0.00	Premium	MillerCoors
196	7199017028	Coors 6/12B	0.000	\$0.00	\$0.00	Premium	MillerCoors
197	85909300244	SixPoint The Crisp 6/12C	0.000	\$0.00	\$0.00	Micro	Micro Breweries
198	68174511112	Blue Point Toasted Lager 6/12B	0.000	\$0.00	\$0.00	Micro	Anheuser-Busch InBev
199	68174511118	Blue Point Seasonal 6/12B	0.000	\$0.00	\$0.00	Micro	Anheuser-Busch InBev
200	7199030078	Coors Light 18/12B	0.000	\$0.00	\$0.00	Premium	MillerCoors
201	9425400015	Post Road Pumpkin Ale 6/12B	0.000	\$0.00	\$0.00	Micro	Micro Breweries
202	63848900137	Dogfish Head Namaste 6/12B	0.000	\$0.00	\$0.00	Micro	Micro Breweries
203	1820011985	Redbridge Lager 6/12B	0.000	\$0.00	\$0.00	Specialty	Anheuser-Busch InBev
204	4257205715	Clausthaler NA 6/12B	0.000	\$0.00	\$0.00	Non Alcohol	Import
205	7199070002	George Killian's Irish Red 6/12B	0.000	\$0.00	\$0.00	Specialty	MillerCoors
206	7199009554	Blue Moon Brewmaster's Sampler 12/1...	0.000	\$0.00	\$0.00	Specialty	MillerCoors
207	83972800411	Big Flats Lager Beer 6/12C	0.000	\$0.00	\$0.00	Sub Premium	Micro Breweries
208	68715190018	Southampton IPA 6/12B	0.000	\$0.00	\$0.00	Micro	Micro Breweries
209	70277008101	Omission Lager 6/12B	0.000	\$0.00	\$0.00	Micro	Anheuser-Busch InBev
210	1820021991	Stella Artois Cidre 4/12B	0.000	\$0.00	\$0.00	Cider	Anheuser-Busch InBev
211	8382007152	Smithwicks Irish Ale 6/12B	0.000	\$0.00	\$0.00	Imports	Diageo