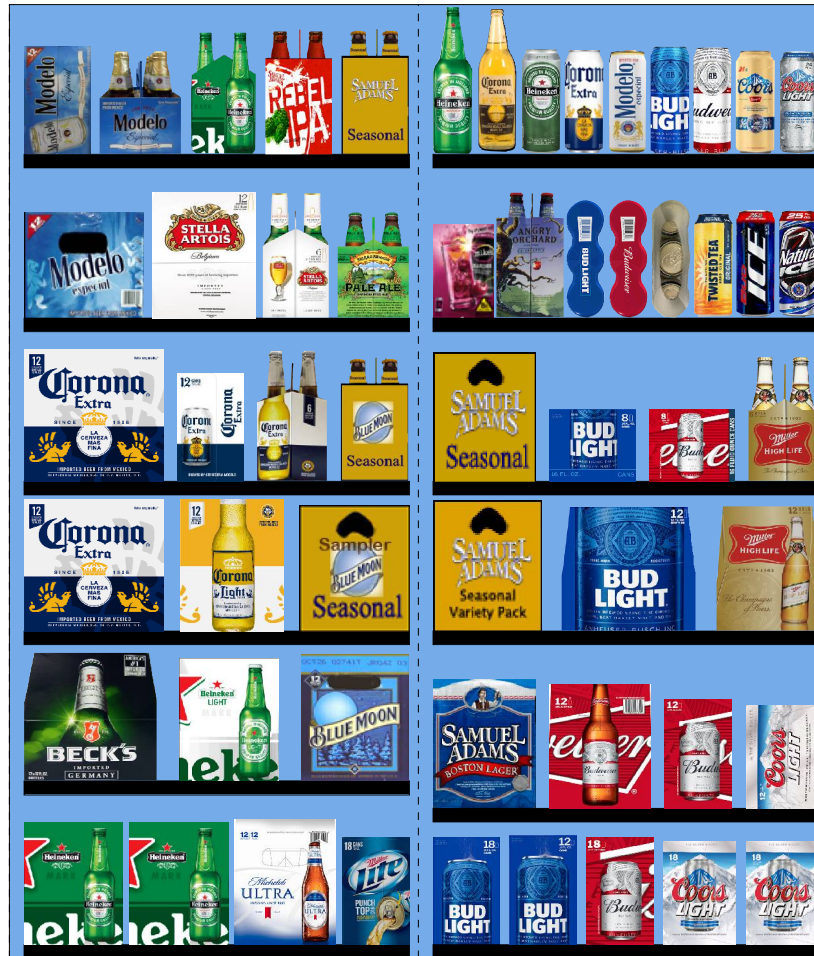


5439.psa For Validation Purposes Only NOT FINAL



Printed: 4/14/2016

Traffic Flow Left-right

POG: 5439.psa



POG Size: 5'0.00

Segments 1 - 2 of 2

Page: 1

SCHEMATIC BACKING REPORT

5439.psa

Planogram: 5439.psa

Segment #1 : Shelf #6 DEPTH: 36 in WIDTH: 28 in DISTANCE FROM TOP OF BASE SHELF TO BOTTOM OF SHELF: 0.00 in

POS	# FAC	UPC	ID	NAME	CASES	CAPACITY	UNITS HIGH	DOS	MVMT
20	2	7289000016	7289000016	Heineken 12/12B	3.0	6	1	1.6	26.1
21	1	1820005990	1820005990	Michelob Ultra 12/12B	1.5	3	1	4.3	4.9
22	1	3410057340	3410057340	Miller Lite 18/12C	2.0	2	1	5.3	2.6

Segment #1 : Shelf #5 DEPTH: 36 in WIDTH: 28 in DISTANCE FROM TOP OF BASE SHELF TO BOTTOM OF SHELF: 12.00 in

POS	# FAC	UPC	ID	NAME	CASES	CAPACITY	UNITS HIGH	DOS	MVMT
17	1	8248812300	8248812300	Becks 12/12B	2.0	4	1	8.4	3.3
18	1	7289000159	7289000159	Heineken Premium Light 12/12B	1.5	3	1	2.2	9.7
19	1	7199009516	7199009516	Blue Moon Belgian White Ale 12/12B	1.5	3	1	5.1	4.2

Segment #1 : Shelf #4 DEPTH: 36 in WIDTH: 28 in DISTANCE FROM TOP OF BASE SHELF TO BOTTOM OF SHELF: 23.00 in

POS	# FAC	UPC	ID	NAME	CASES	CAPACITY	UNITS HIGH	DOS	MVMT
14	1	8066095615	8066095615	Corona Extra 12/12B	2.0	4	1	1.6	34.1
15	1	8066095675	8066095675	Corona Light 12/12B	1.5	3	1	2.6	8.0
16	1	7199009554	7199009554	Blue Moon Brewmaster's Sampler 12/12B	1.5	3	1	33.3	0.6

Segment #1 : Shelf #3 DEPTH: 36 in WIDTH: 28 in DISTANCE FROM TOP OF BASE SHELF TO BOTTOM OF SHELF: 34.00 in

POS	# FAC	UPC	ID	NAME	CASES	CAPACITY	UNITS HIGH	DOS	MVMT
10	1	8066095615	8066095615	Corona Extra 12/12B	2.0	4	1	1.6	34.1
11	1	8066095695	8066095695	Corona Extra 12/12C	1.5	3	1	12.4	1.7
12	1	8066095605	8066095605	Corona Extra 6/12B	1.0	4	1	3.5	8.1
13	1	7199009532	7199009532	Blue Moon Seasonal 6/12B	1.0	4	1	28.0	1.0

Segment #1 : Shelf #2 DEPTH: 36 in WIDTH: 28 in DISTANCE FROM TOP OF BASE SHELF TO BOTTOM OF SHELF: 46.00 in

POS	# FAC	UPC	ID	NAME	CASES	CAPACITY	UNITS HIGH	DOS	MVMT
6	1	8066095757	8066095757	Modelo 12/12B	1.0	2	1	9.9	1.4
7	1	78615000014	78615000014	Stella Artois 12/11B	1.5	3	1	2.5	8.3
8	1	78615000001	78615000001	Stella Artois 6/11B	1.0	4	1	8.1	3.5
9	1	8378337521	8378337521	Sierra Nevada Pale Ale 6/12B	1.0	4	1	17.4	1.6

Segment #1 : Shelf #1 DEPTH: 36 in WIDTH: 28 in DISTANCE FROM TOP OF BASE SHELF TO BOTTOM OF SHELF: 58.00 in

POS	# FAC	UPC	ID	NAME	CASES	CAPACITY	UNITS HIGH	DOS	MVMT
1	1	8066095715	8066095715	Modelo 12/12C	1.5	3	1	3.1	6.8
2	1	8066095765	8066095765	Modelo 6/12B	1.0	4	1	0.0	0.0
3	1	7289000011	7289000011	Heineken 6/12B	1.0	4	1	3.6	7.8
4	1	8769200127	8769200127	Samuel Adams Rebel IPA 6/12B	1.0	4	1	15.2	1.8
5	1	8769230050	8769230050	Samuel Adams Seasonal 6/12B	1.0	4	1	21.4	1.3

Segment #2 : Shelf #6 DEPTH: 36 in WIDTH: 28 in DISTANCE FROM TOP OF BASE SHELF TO BOTTOM OF SHELF: 0.00 in

POS	# FAC	UPC	ID	NAME	CASES	CAPACITY	UNITS HIGH	DOS	MVMT
51	1	1820053218	1820053218	Bud Light 18/12C	2.0	2	1	3.1	4.5
52	1	1820053047	1820053047	Bud Light 12/12C	1.5	3	1	2.5	8.5
53	1	1820011218	1820011218	Budweiser 18/12C	2.0	2	1	2.8	5.1
54	2	7199030017	7199030017	Coors Light 18/12C	4.0	4	1	2.6	10.6

SCHEMATIC BACKING REPORT

5439.psa

Segment #2 : Shelf #5 DEPTH: 36 in WIDTH: 28 in DISTANCE FROM TOP OF BASE SHELF TO BOTTOM OF SHELF: 10.00 in

POS	# FAC	UPC	ID	NAME	CASES	CAPACITY	UNITS HIGH	DOS	MVMT
47	1	8769210014	8769210014	Samuel Adams Boston Lgr 12/12B	1.5	3	1	18.5	1.1
48	1	1820000771	1820000771	Budweiser 12/12B	1.5	3	1	3.2	6.5
49	1	1820011047	1820011047	Budweiser 12/12C	1.5	3	1	1.9	11.3
50	1	7199000048	7199000048	Coors Light 12/12C	1.5	3	1	2.1	10.0

Segment #2 : Shelf #4 DEPTH: 36 in WIDTH: 28 in DISTANCE FROM TOP OF BASE SHELF TO BOTTOM OF SHELF: 23.00 in

POS	# FAC	UPC	ID	NAME	CASES	CAPACITY	UNITS HIGH	DOS	MVMT
44	1	8769229103	8769229103	Samuel Adams Ssnl Variety-Mix Pk 12/12B	1.5	3	1	13.8	1.5
45	1	1820000769	1820000769	Bud Light 12/12B	2.0	4	1	4.5	6.2
46	1	3410001509	3410001509	Miller High Life 12/12B	1.5	3	1	6.5	3.2

Segment #2 : Shelf #3 DEPTH: 36 in WIDTH: 28 in DISTANCE FROM TOP OF BASE SHELF TO BOTTOM OF SHELF: 34.00 in

POS	# FAC	UPC	ID	NAME	CASES	CAPACITY	UNITS HIGH	DOS	MVMT
40	1	8769201103	8769201103	Samuel Adams Seasonal 12/12B	1.5	3	1	13.0	1.6
41	1	1820008989	1820008989	Bud Light 8/16C	1.0	3	1	0.0	0.0
42	1	1820008981	1820008981	Budweiser 8/16C	1.0	3	1	0.0	0.0
43	1	3410001505	3410001505	Miller High Life 6/12B	1.0	4	1	0.0	0.0

Segment #2 : Shelf #2 DEPTH: 36 in WIDTH: 28 in DISTANCE FROM TOP OF BASE SHELF TO BOTTOM OF SHELF: 46.00 in

POS	# FAC	UPC	ID	NAME	CASES	CAPACITY	UNITS HIGH	DOS	MVMT
32	1	63598525948	63598525948	Mikes HARDER Blk Cherry Lemonade 12/...	1.5	3	1	8.0	2.6
33	1	8769282102	8769282102	Angry Orchard Crisp Apple 6/12B	1.0	4	1	9.6	2.9
34	1	1820021986	1820021986	Bud Light 3/25C	0.8	4	1	9.0	3.1
35	1	1820021985	1820021985	Budweiser 3/25C	0.8	4	1	6.3	4.5
36	1	7199030120	7199030120	Coors Light 3/24C	0.8	4	1	4.7	5.9
37	1	8769283231	8769283231	Twisted Tea 1/24C	1.0	12	1	0.0	0.0
38	1	1820025006	1820025006	Bud Ice 1/25C	0.8	12	1	0.0	0.0
39	1	1820025008	1820025008	Natural Ice 1/25C	0.8	12	1	0.0	0.0

Segment #2 : Shelf #1 DEPTH: 36 in WIDTH: 28 in DISTANCE FROM TOP OF BASE SHELF TO BOTTOM OF SHELF: 58.00 in

POS	# FAC	UPC	ID	NAME	CASES	CAPACITY	UNITS HIGH	DOS	MVMT
23	1	7289000478	7289000478	Heineken 1/22B	1.0	12	1	0.0	0.0
24	1	8066095641	8066095641	Corona Extra 1/24B	0.9	11	1	0.0	0.0
25	1	7289000119	7289000119	Heineken 1/24C	1.0	12	1	0.0	0.0
26	1	8066095643	8066095643	Corona Extra 1/24C	1.0	12	1	0.0	0.0
27	1	8066095721	8066095721	Modelo 1/24C	1.0	12	1	13.8	6.1
28	1	1820025001	1820025001	Bud Light 1/25C	0.8	12	1	12.7	6.6
29	1	1820025000	1820025000	Budweiser 1/25C	0.8	12	1	67.1	1.3
30	1	7199010071	7199010071	Coors 1/24C	1.0	12	1	509.1	0.2
31	1	7199030065	7199030065	Coors Light 1/24C	1.0	12	1	6.6	12.7

SKUs on Planogram: 53

UNALLOCATED ITEMS/OPTIONAL ITEMS

5439.psa

UNALLOCATED SKU REPORT

	UPC	NAME	MVMT	Profit	Sales	Category	Manufacturer
1	7199047712	Keystone Ice 1/24C	2.973	\$0.00	\$0.00	Sub Premium	MillerCoors
2	7199030005	Coors Light 6/12B	2.692	\$0.00	\$0.00	Premium	MillerCoors
3	1820015047	Natural Light 12/12C	2.615	\$0.00	\$0.00	Sub Premium	Anheuser-Busch InBev
4	1820000834	Budweiser 6/12B	2.452	\$0.00	\$0.00	Premium	Anheuser-Busch InBev
5	1820000964	Natural Ice 12/12C	2.077	\$0.00	\$0.00	Sub Premium	Anheuser-Busch InBev
6	7199030069	Coors Light 12/12B	1.968	\$0.00	\$0.00	Premium	MillerCoors
7	3410008716	Redd's Apple Ale 6/12B	1.733	\$0.00	\$0.00	Specialty	MillerCoors
8	9200002009	Small Town Not Your Fathers RtBr 6/1...	1.538	\$0.00	\$0.00	Micro	Pabst
9	1820018992	Bud Light Platinum 12/12B	1.527	\$0.00	\$0.00	Specialty	Anheuser-Busch InBev
10	8200072751	Smirnoff Ice Green Apple 6/11B	1.462	\$0.00	\$0.00	FMB	Diageo
11	3410057636	Miller Lite 12/12C	1.458	\$0.00	\$0.00	Premium	MillerCoors
12	9200002000	Small Town Not Your Fathers RtBr 6/1...	1.385	\$0.00	\$0.00	Micro	Pabst
13	1820014990	Bud Light Lime 12/12B	1.299	\$0.00	\$0.00	Specialty	Anheuser-Busch InBev
14	7199048024	Keystone Light 1/24C	1.227	\$0.00	\$0.00	Sub Premium	MillerCoors
15	63598506074	Mikes Hard Seasonal 6/11B	1.038	\$0.00	\$0.00	FMB	Mark Anthony Brands
16	63598506744	Mikes Hard Black Cherry Lemonade 6/...	0.959	\$0.00	\$0.00	FMB	Mark Anthony Brands
17	8769200004	Samuel Adams Seasonal Select 6/12B	0.839	\$0.00	\$0.00	Micro	Boston Beer
18	8200072385	Smirnoff Ice 6/11B	0.769	\$0.00	\$0.00	FMB	Diageo
19	8992427896	Yuengling Traditional Lager 12/12B	0.766	\$0.00	\$0.00	Premium	DG Yuengling & Sons
20	1820021979	Budweiser 8/16AL	0.692	\$0.00	\$0.00	Premium	Anheuser-Busch InBev
21	1820020998	Bud Light 8/16AL	0.538	\$0.00	\$0.00	Premium	Anheuser-Busch InBev
22	8200072754	Smirnoff Ice Raspberry 6/11B	0.530	\$0.00	\$0.00	FMB	Diageo
23	1820020993	Bud Light Lime Straw-Ber-Rita 12/8C	0.500	\$0.00	\$0.00	FMB	Anheuser-Busch InBev
24	3410031602	Milwaukee's Best 12/12C	0.462	\$0.00	\$0.00	Sub Premium	MillerCoors
25	3410057509	Miller Lite 12/12B	0.455	\$0.00	\$0.00	Premium	MillerCoors
26	79837312602	Magic Hat #9 6/12B	0.440	\$0.00	\$0.00	Micro	North American Breweri...
27	7199000047	Coors 12/12C	0.385	\$0.00	\$0.00	Premium	MillerCoors
28	1820019987	Bud Light Lime-A-Rita 12/8C	0.384	\$0.00	\$0.00	FMB	Anheuser-Busch InBev
29	73692011132	Goose Island India Pale Ale 6/12B	0.315	\$0.00	\$0.00	Micro	Anheuser-Busch InBev
30	2210000170	Pabst 12/12C	0.308	\$0.00	\$0.00	Sub Premium	Pabst
31	68174511112	Blue Point Toasted Lager 6/12B	0.291	\$0.00	\$0.00	Micro	Anheuser-Busch InBev
32	8769200109	Samuel Adams Seasonal 12/12C	0.285	\$0.00	\$0.00	Micro	Boston Beer
33	7167007106	Saranac Twelve Beers 12/12B	0.280	\$0.00	\$0.00	Micro	FX Matt
34	7199009511	Blue Moon Belgian White Ale 6/12B	0.277	\$0.00	\$0.00	Specialty	MillerCoors
35	63598525945	Mikes HARDER Lemonade 12/8C	0.241	\$0.00	\$0.00	FMB	Mark Anthony Brands
36	1820022989	Bud Light Lime Mang-O-Rita 12/8C	0.239	\$0.00	\$0.00	FMB	Anheuser-Busch InBev
37	3410058805	Leinenkugel Heritage Seasonal 6/12B	0.231	\$0.00	\$0.00	Specialty	MillerCoors
38	8066095711	Modelo 18/12C	0.231	\$0.00	\$0.00	Imports	Crown Imports LLC
39	8769210012	Samuel Adams Boston Lgr 6/12B	0.222	\$0.00	\$0.00	Micro	Boston Beer
40	7199009536	Blue Moon Seasonal 12/12B	0.218	\$0.00	\$0.00	Specialty	MillerCoors
41	1820022992	Bud Light Lime-A-Rita Seasonal 12/8C	0.200	\$0.00	\$0.00	FMB	Anheuser-Busch InBev
42	63598510062	Mikes Hard Lemonade 6/11B	0.198	\$0.00	\$0.00	FMB	Mark Anthony Brands
43	8200075748	Smirnoff Ice Screwdriver 6/11B	0.195	\$0.00	\$0.00	FMB	Diageo
44	68174511118	Blue Point Seasonal 6/12B	0.194	\$0.00	\$0.00	Micro	Anheuser-Busch InBev
45	8982623010	Beers of Mexico 12/12B	0.191	\$0.00	\$0.00	Imports	Heineken USA
46	3061300001	Brooklyn Lager 6/12B	0.176	\$0.00	\$0.00	Micro	Micro Breweries
47	1820022988	Bud Light Lime Raz-Ber-Rita 12/8C	0.168	\$0.00	\$0.00	FMB	Anheuser-Busch InBev
48	3410008730	Redd's Strawberry Ale 6/12B	0.154	\$0.00	\$0.00	Specialty	MillerCoors
49	3410015509	Miller 64 12/12B	0.154	\$0.00	\$0.00	Premium	MillerCoors
50	3410051607	Leinenkugel Seasonal Shandy 12/12B	0.154	\$0.00	\$0.00	Specialty	MillerCoors
51	7199048004	Keystone Light 12/12C	0.154	\$0.00	\$0.00	Sub Premium	MillerCoors
52	1820097007	Bud Light Lime Lemon-Ade-Rita 12/8C	0.154	\$0.00	\$0.00	FMB	Anheuser-Busch InBev
53	7231123012	Dos Equis Lager 12/12B	0.142	\$0.00	\$0.00	Imports	Heineken USA
54	68174511102	Blue Point Hoptical Illusion 6/12B	0.135	\$0.00	\$0.00	Micro	Anheuser-Busch InBev
55	3410051605	Leinenkugel Seasonal Shandy 6/12B	0.117	\$0.00	\$0.00	Specialty	MillerCoors
56	1820017993	Shock Top Seasonal 6/12B	0.107	\$0.00	\$0.00	Specialty	Anheuser-Busch InBev
57	1497450009	Woodchuck Amber 6/12B	0.088	\$0.00	\$0.00	Cider	Vermont Hard Cider Co...
58	8769275102	Twisted Tea Half & Half 6/12B	0.077	\$0.00	\$0.00	FMB	Boston Beer
59	7289000020	Heineken 12/12C	0.077	\$0.00	\$0.00	Imports	Heineken USA
60	1820013986	Shock Top Belgian White Ale 6/12B	0.069	\$0.00	\$0.00	Specialty	Anheuser-Busch InBev
61	8834510151	Strongbow Gold Hard Cider 6/11B	0.052	\$0.00	\$0.00	Cider	Heineken USA
62	8378337512	Sierra Nevada Pale Ale 12/12B	0.046	\$0.00	\$0.00	Micro	Sierra Nevada
63	8769283102	Twisted Tea 6/12B	0.038	\$0.00	\$0.00	FMB	Boston Beer

UNALLOCATED ITEMS/OPTIONAL ITEMS

5439.psa

UNALLOCATED SKU REPORT

	UPC	NAME	MVMT	Profit	Sales	Category	Manufacturer
64	8769200105	Samuel Adams Boston Lgr 12/12C	0.034	\$0.00	\$0.00	Micro	Boston Beer
65	7143934450	Rolling Rock 12/12C	0.013	\$0.00	\$0.00	Sub Premium	Anheuser-Busch InBev
66	68174511130	Blue Point Blueberry Ale 6/12B	0.012	\$0.00	\$0.00	Micro	Anheuser-Busch InBev
67	3410008813	Miller Fortune 12/12B	0.008	\$0.00	\$0.00	Specialty	MillerCoors
68	3061300053	Brooklyn Seasonal 6/12B	0.003	\$0.00	\$0.00	Micro	Micro Breweries
69	8769200017	Angry Orchard Variety Pack 12/12B	0.002	\$0.00	\$0.00	Cider	Boston Beer
70	1820002992	O'Doul's Amber 6/12B	0.000	\$0.00	\$0.00	Non Alcohol	Anheuser-Busch InBev
71	8769227102	Samuel Adams Cherry Wht 6/12B	0.000	\$0.00	\$0.00	Micro	Boston Beer
72	7289000158	Heineken Premium Light 6/12B	0.000	\$0.00	\$0.00	Imports	Heineken USA
73	18195400002	Peroni Nastro Azzuro 6/12B	0.000	\$0.00	\$0.00	Imports	MillerCoors
74	8382007152	Smithwicks Irish Ale 6/12B	0.000	\$0.00	\$0.00	Imports	Diageo
75	3410057023	Miller Lite 9/16AL	0.000	\$0.00	\$0.00	Premium	MillerCoors
76	7199030104	Coors Light 9/16AL	0.000	\$0.00	\$0.00	Premium	MillerCoors
77	8382012360	Guinness Draught 4/15C	0.000	\$0.00	\$0.00	Imports	Diageo
78	1820079047	O'Doul's 12/12C	0.000	\$0.00	\$0.00	Non Alcohol	Anheuser-Busch InBev
79	8769200255	Angry Orchard Hop N Mad 6/12B	0.000	\$0.00	\$0.00	Cider	Boston Beer
80	88715100195	Coney Island Overpass IPA 6/12B	0.000	\$0.00	\$0.00	Micro	Boston Beer
81	8769284102	Angry Orchard Apple Ginger 6/12B	0.000	\$0.00	\$0.00	Cider	Boston Beer
82	3410008749	Redd's Wicked Mango 12/10C	0.000	\$0.00	\$0.00	Specialty	MillerCoors
83	79837312123	Magic Hat #9 12/12B	0.000	\$0.00	\$0.00	Micro	North American Breweri...
84	8769200149	Angry Orchard Green Apple 6/12B	0.000	\$0.00	\$0.00	Cider	Boston Beer
85	7199009584	Blue Moon Cinnamon Horchata Ale 6/1...	0.000	\$0.00	\$0.00	Specialty	MillerCoors
86	3410008810	Miller Fortune 6/12B	0.000	\$0.00	\$0.00	Specialty	MillerCoors
87	8378322812	Sierra Nevada Seasonal 12/12B	0.000	\$0.00	\$0.00	Micro	Sierra Nevada
88	4182700712	Harpoon IPA 12/12B	0.000	\$0.00	\$0.00	Micro	Harpoon
89	85998900504	Greenport Harbor Harbor Ale 6/12B	0.000	\$0.00	\$0.00	Micro	Micro Breweries
90	63848900029	Dogfish Head 60 Minute IPA 6/12B	0.000	\$0.00	\$0.00	Micro	Micro Breweries
91	7289010016	Amstel Light 12/12B	0.000	\$0.00	\$0.00	Imports	Heineken USA
92	1820012982	Land Shark Lager 6/12B	0.000	\$0.00	\$0.00	Specialty	Anheuser-Busch InBev
93	1820024001	Stella Artois Cidre 6/12B	0.000	\$0.00	\$0.00	Cider	Anheuser-Busch InBev
94	8769200033	Angry Orchard Crisp Apple 12/12B	0.000	\$0.00	\$0.00	Cider	Boston Beer
95	68174541116	Blue Point Toasted Lager 4/16C	0.000	\$0.00	\$0.00	Micro	Anheuser-Busch InBev
96	63625177612	Stone IPA 6/12B	0.000	\$0.00	\$0.00	Micro	Micro Breweries
97	3410049805	Leinenkugel Sunset Wheat Ale 6/12B	0.000	\$0.00	\$0.00	Specialty	MillerCoors
98	3410008722	Redd's Apple Ale 12/12B	0.000	\$0.00	\$0.00	Specialty	MillerCoors
99	8769259102	Samuel Adams Latitude 48 IPA 6/12B	0.000	\$0.00	\$0.00	Micro	Boston Beer
100	8797502650	Sapporo Draft 1/22C	0.000	\$0.00	\$0.00	Imports	Import
101	85998900516	Greenport Harbor Otherside IPA 6/12B	0.000	\$0.00	\$0.00	Micro	Micro Breweries
102	8382012393	Guinness Extra Stout 6/11B	0.000	\$0.00	\$0.00	Imports	Diageo
103	3410000355	Miller Lite 1/24C	0.000	\$0.00	\$0.00	Premium	MillerCoors
104	3410008755	Redd's Wicked Black Cherry 12/10C	0.000	\$0.00	\$0.00	Specialty	MillerCoors
105	8382056793	Red Stripe 6/12B	0.000	\$0.00	\$0.00	Imports	Diageo
106	7089718331	Fosters Premium Ale 1/25C	0.000	\$0.00	\$0.00	Imports	MillerCoors
107	78036980012	Shipyard Seasonal Ale 6/12B	0.000	\$0.00	\$0.00	Micro	Micro Breweries
108	7248002403	Schaefer 12/12C	0.000	\$0.00	\$0.00	Sub Premium	Pabst
109	8382023473	Harp Lager 6/12B	0.000	\$0.00	\$0.00	Imports	Diageo
110	79837312125	Magic Hat Variety Pack 12/12B	0.000	\$0.00	\$0.00	Micro	North American Breweri...
111	9200002013	Small Town Not Your Fathers Gngr 6/1...	0.000	\$0.00	\$0.00	Micro	Pabst
112	64286020007	Founders Dirty Bastard 6/12B	0.000	\$0.00	\$0.00	Micro	Micro Breweries
113	68174512252	Blue Point Mosaic Session IPA 4/16C	0.000	\$0.00	\$0.00	Micro	Anheuser-Busch InBev
114	7231163011	Dos Equis Ambar 6/12B	0.000	\$0.00	\$0.00	Imports	Heineken USA
115	7199070002	George Killian's Irish Red 6/12B	0.000	\$0.00	\$0.00	Specialty	MillerCoors
116	1820025005	Budweiser Select 1/25C	0.000	\$0.00	\$0.00	Premium	Anheuser-Busch InBev
117	60940872979	Port Jeff Party Boat IPA 6/12C	0.000	\$0.00	\$0.00	Micro	Micro Breweries
118	7289010011	Amstel Light 6/12B	0.000	\$0.00	\$0.00	Imports	Heineken USA
119	1820000031	Natural Light 6/12C	0.000	\$0.00	\$0.00	Sub Premium	Anheuser-Busch InBev
120	78615000036	Hoegaarden 6/11B	0.000	\$0.00	\$0.00	Imports	Anheuser-Busch InBev
121	7199017028	Coors 6/12B	0.000	\$0.00	\$0.00	Premium	MillerCoors
122	4257205715	Clausthaler NA 6/12B	0.000	\$0.00	\$0.00	Non Alcohol	Import
123	7167084200	Saranac Adirondack Trail Mix 6/12B	0.000	\$0.00	\$0.00	Micro	FX Matt
124	3410057505	Miller Lite 6/12B	0.000	\$0.00	\$0.00	Premium	MillerCoors
125	9425400015	Post Road Pumpkin Ale 6/12B	0.000	\$0.00	\$0.00	Micro	Micro Breweries
126	8382012418	Guinness Nitro IPA 6/11C	0.000	\$0.00	\$0.00	Imports	

UNALLOCATED ITEMS/OPTIONAL ITEMS

5439.psa

UNALLOCATED SKU REPORT

	UPC	NAME	MVMT	Profit	Sales	Category	Manufacturer
127	8248812700	Becks NA 6/12B	0.000	\$0.00	\$0.00	Non Alcohol	Anheuser-Busch InBev
128	3410000340	Redd's Variety Pack 12/12B	0.000	\$0.00	\$0.00	Specialty	MillerCoors
129	85114800506	Great South Bay Seasonal 6/12B	0.000	\$0.00	\$0.00	Micro	Micro Breweries
130	7231133140	Dos Equis Ambar 12/12B	0.000	\$0.00	\$0.00	Imports	Heineken USA
131	63598512998	Mikes Hard Variety Pack 12/11B	0.000	\$0.00	\$0.00	FMB	Mark Anthony Brands
132	8382010403	Guinness Draught 12/11B	0.000	\$0.00	\$0.00	Imports	Diageo
133	4182700146	Harpoon Seasonal 6/12B	0.000	\$0.00	\$0.00	Micro	Harpoon
134	88715100051	Traveler Seasonal Shandy 6/12B	0.000	\$0.00	\$0.00	Micro	Boston Beer
135	7199076400	George Killian's Irish Red 12/12B	0.000	\$0.00	\$0.00	Specialty	MillerCoors
136	8992427891	Yuengling Traditional Lager 6/12B	0.000	\$0.00	\$0.00	Premium	DG Yuengling & Sons
137	8248812345	Becks 6/12B	0.000	\$0.00	\$0.00	Imports	Anheuser-Busch InBev
138	1820096721	Michelob Ultra 18/12C SC	0.000	\$0.00	\$0.00	Specialty	Anheuser-Busch InBev
139	86273700003	Montauk Session IPA 6/12C	0.000	\$0.00	\$0.00	Micro	Micro Breweries
140	3061300071	Brooklyn Variety Pack 12/12B	0.000	\$0.00	\$0.00	Micro	Micro Breweries
141	1820020994	Bud Light Platinum 12/12C SC	0.000	\$0.00	\$0.00	Specialty	Anheuser-Busch InBev
142	1820021998	Shock Top Honeycrisp Apple Wheat 6/...	0.000	\$0.00	\$0.00	Specialty	Anheuser-Busch InBev
143	8378333100	Sierra Nevada Torpedo Extra IPA 6/12B	0.000	\$0.00	\$0.00	Micro	Sierra Nevada
144	85114800500	Great South Bay Blood Orange 6/12B	0.000	\$0.00	\$0.00	Micro	Micro Breweries
145	81760601000	Captain Lawrence Pale Ale 6/12B	0.000	\$0.00	\$0.00	Micro	Micro Breweries
146	88573700002	Shiner Family Reunion Mix 6/12B	0.000	\$0.00	\$0.00	Micro	Gambrinus
147	76227407531	Bass Pale Ale 12/12B	0.000	\$0.00	\$0.00	Imports	Anheuser-Busch InBev
148	85998900522	Greenport Harbor Seasonal 6/12B	0.000	\$0.00	\$0.00	Micro	Micro Breweries
149	64286020024	Founders All Day IPA 6/12B	0.000	\$0.00	\$0.00	Micro	Micro Breweries
150	85909300242	SixPoint Sweet Action 6/12C	0.000	\$0.00	\$0.00	Micro	Micro Breweries
151	1820025505	Bud Light Lime Straw-Ber-Rita 1/25C	0.000	\$0.00	\$0.00	FMB	Anheuser-Busch InBev
152	1820023984	Oculto 6/12B	0.000	\$0.00	\$0.00	Micro	Anheuser-Busch InBev
153	7143934806	Rolling Rock 6/12B	0.000	\$0.00	\$0.00	Sub Premium	Anheuser-Busch InBev
154	8066095625	Corona Light 6/12B	0.000	\$0.00	\$0.00	Imports	Crown Imports LLC
155	68715190007	Southampton Double White Ale 6/12B	0.000	\$0.00	\$0.00	Micro	Micro Breweries
156	1820005989	Michelob Ultra 6/12B	0.000	\$0.00	\$0.00	Specialty	Anheuser-Busch InBev
157	1820000784	O'Doul's 6/12B	0.000	\$0.00	\$0.00	Non Alcohol	Anheuser-Busch InBev
158	8382010401	Guinness Draught 6/11B	0.000	\$0.00	\$0.00	Imports	Diageo
159	7289000000	Heineken 6/12C	0.000	\$0.00	\$0.00	Imports	Heineken USA
160	8378322822	Sierra Nevada Seasonal 6/12B	0.000	\$0.00	\$0.00	Micro	Sierra Nevada
161	8382018132	Guinness Blonde 6/12B	0.000	\$0.00	\$0.00	Imports	Diageo
162	1820019991	Shock Top Seasonal 12/12B	0.000	\$0.00	\$0.00	Specialty	Anheuser-Busch InBev
163	8066095401	Coronita Extra 6/7B	0.000	\$0.00	\$0.00	Imports	Crown Imports LLC
164	68715190018	Southampton IPA 6/12B	0.000	\$0.00	\$0.00	Micro	Micro Breweries
165	7089701331	Fosters Lager 1/25C	0.000	\$0.00	\$0.00	Imports	MillerCoors
166	8769200129	Samuel Adams Rebel IPA 12/12B	0.000	\$0.00	\$0.00	Micro	Boston Beer
167	76227407131	Bass Pale Ale 6/12B	0.000	\$0.00	\$0.00	Imports	Anheuser-Busch InBev
168	3410008746	Redd's Green Apple 6/12B	0.000	\$0.00	\$0.00	Specialty	MillerCoors
169	1820012998	Land Shark Lager 12/12B	0.000	\$0.00	\$0.00	Specialty	Anheuser-Busch InBev
170	85909300244	SixPoint The Crisp 6/12C	0.000	\$0.00	\$0.00	Micro	Micro Breweries
171	7199000008	Coors Light 6/12C	0.000	\$0.00	\$0.00	Premium	MillerCoors
172	8992429386	Yuengling Black & Tan 12/12B	0.000	\$0.00	\$0.00	Premium	DG Yuengling & Sons
173	88715100094	Coney Island Mermaid Pilsner 6/12B	0.000	\$0.00	\$0.00	Micro	Boston Beer
174	68174521122	Blue Point Variety 12/12B	0.000	\$0.00	\$0.00	Micro	Anheuser-Busch InBev
175	73692011439	Goose Island India Pale Ale 4/16C	0.000	\$0.00	\$0.00	Micro	Anheuser-Busch InBev
176	1820014991	Bud Light Lime 6/12B	0.000	\$0.00	\$0.00	Specialty	Anheuser-Busch InBev
177	7199009561	Blue Moon White IPA 6/12B	0.000	\$0.00	\$0.00	Specialty	MillerCoors
178	3410000349	Redd's Wicked Mango 1/24C	0.000	\$0.00	\$0.00	Specialty	MillerCoors
179	79603011493	Kona Castaway IPA 6/12B	0.000	\$0.00	\$0.00	Micro	Anheuser-Busch InBev
180	1820024008	Stella Artois Gft Pk 1/25B	0.000	\$0.00	\$0.00	Imports	Anheuser-Busch InBev
181	86273700000	Montauk Driftwood Ale 6/12C	0.000	\$0.00	\$0.00	Micro	Micro Breweries
182	3410000323	Redd's Wicked Apple 1/24C	0.000	\$0.00	\$0.00	Specialty	MillerCoors
183	4182700076	Harpoon IPA 6/12B	0.000	\$0.00	\$0.00	Micro	Harpoon
184	78624311990	Flying Dog Raging Btch Belgn Ale 6/12B	0.000	\$0.00	\$0.00	Micro	Micro Breweries
185	72383000009	Lagunitas IPA 6/12B	0.000	\$0.00	\$0.00	Micro	Micro Breweries
186	2210000004	Pabst 1/24C	0.000	\$0.00	\$0.00	Sub Premium	Pabst
187	8992495432	Yuengling Black & Tan 6/12B	0.000	\$0.00	\$0.00	Premium	DG Yuengling & Sons
188	7289000188	Heineken Premium Light 12/12C	0.000	\$0.00	\$0.00	Imports	Heineken USA
189	1820016989	Shock Top Raspberry Wheat 6/12B	0.000	\$0.00	\$0.00	Specialty	Anheuser-Busch InBev

UNALLOCATED ITEMS/OPTIONAL ITEMS

5439.psa

UNALLOCATED SKU REPORT

	UPC	NAME	MVMT	Profit	Sales	Category	Manufacturer
190	7289000174	Heineken 1/169MBR	0.000	\$0.00	\$0.00	Imports	Heineken USA
191	8992423040	Yuengling Light Lager 12/12B	0.000	\$0.00	\$0.00	Premium	DG Yuengling & Sons
192	85909300243	SixPoint Bengali 6/12C	0.000	\$0.00	\$0.00	Micro	Micro Breweries
193	64286090024	Founders All Day IPA 15/12C	0.000	\$0.00	\$0.00	Micro	Micro Breweries
194	1820018993	Bud Light Platinum 6/12B	0.000	\$0.00	\$0.00	Specialty	Anheuser-Busch InBev
195	63848900137	Dogfish Head Namaste 6/12B	0.000	\$0.00	\$0.00	Micro	Micro Breweries
196	63598560611	Mikes Hard Cranberry Lemonade 6/11B	0.000	\$0.00	\$0.00	FMB	Mark Anthony Brands
197	1820011985	Redbridge Lager 6/12B	0.000	\$0.00	\$0.00	Specialty	Anheuser-Busch InBev
198	1820000106	Bud Light 6/12C	0.000	\$0.00	\$0.00	Premium	Anheuser-Busch InBev
199	88715100213	Coney Island Hard Root Beer 6/12B	0.000	\$0.00	\$0.00	Micro	Boston Beer
200	4182700012	Harpoon Mix Pack 12/12B	0.000	\$0.00	\$0.00	Micro	Harpoon
201	1820015981	Shock Top Belgian White Ale 12/12B	0.000	\$0.00	\$0.00	Specialty	Anheuser-Busch InBev
202	73692011139	Goose Island Seasonal Sampler 12/12B	0.000	\$0.00	\$0.00	Micro	Anheuser-Busch InBev
203	8834510005	Newcastle Brown Ale 6/12B	0.000	\$0.00	\$0.00	Imports	Heineken USA
204	7199030078	Coors Light 18/12B	0.000	\$0.00	\$0.00	Premium	MillerCoors
205	70277008101	Omission Lager 6/12B	0.000	\$0.00	\$0.00	Micro	Anheuser-Busch InBev
206	7231163012	Dos Equis Lager 6/12B	0.000	\$0.00	\$0.00	Imports	Heineken USA
207	72383000020	Lagunitas A Little Sumpin Sumpin 6/12B	0.000	\$0.00	\$0.00	Micro	Micro Breweries
208	8857333101	Shiner Bock 6/12B	0.000	\$0.00	\$0.00	Micro	Gambrinus
209	8382012368	Guinness Draught 8/15C	0.000	\$0.00	\$0.00	Imports	Diageo
210	1820000833	Bud Light 6/12B	0.000	\$0.00	\$0.00	Premium	Anheuser-Busch InBev
211	8769200079	Angry Orchard Seasonal 6/12B	0.000	\$0.00	\$0.00	Cider	Boston Beer
212	79837312606	Magic Hat Seasonal 6/12B	0.000	\$0.00	\$0.00	Micro	North American Breweri...
213	1820017991	Shock Top Sampler 12/12B	0.000	\$0.00	\$0.00	Specialty	Anheuser-Busch InBev
214	1820000016	Budweiser 6/12C	0.000	\$0.00	\$0.00	Premium	Anheuser-Busch InBev
215	83972800411	Big Flats Lager Beer 6/12C	0.000	\$0.00	\$0.00	Sub Premium	Micro Breweries
216	1820006991	Michelob Ultra 12/12C SC	0.000	\$0.00	\$0.00	Specialty	Anheuser-Busch InBev
217	86273700001	Montauk Summer Ale 6/12C	0.000	\$0.00	\$0.00	Micro	Micro Breweries
218	1820021991	Stella Artois Cidre 4/12B	0.000	\$0.00	\$0.00	Cider	Anheuser-Busch InBev