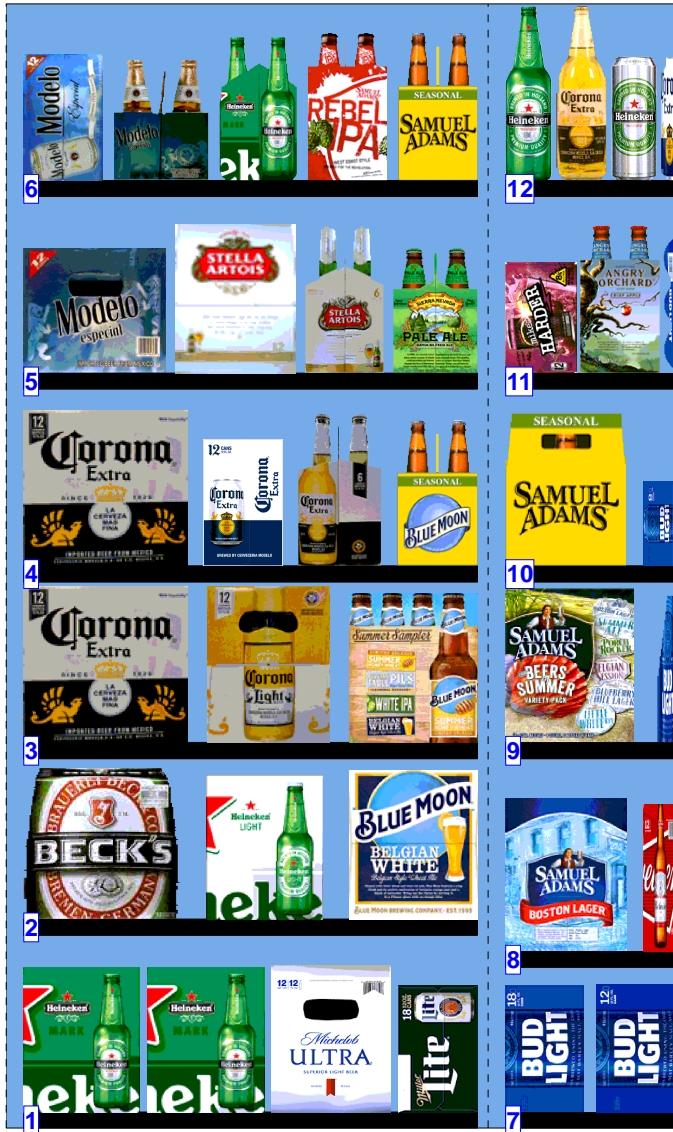




WALGREENS 5439.psa



Store # 5439 H: 5 ft 10.00 in W: 5 ft D: 2 ft 3.00 in # of segments: 2

| 1 | | W:28.25 in | D:36.00 in | Avail Space: 1.47 in | | Ht Space: 11.00 in | |
|------------|-----------------------|------------|------------|----------------------|-------|--------------------|--|
| UPC | Name | Category | HFacings | Orientation | Units | | |
| 728900016 | Heineken 12/12B | Imports | 2 | Side | 6 | | |
| 1820005990 | Michelob Ultra 12/12B | Specialty | 1 | Side | 3 | | |
| 3410057340 | Miller Lite 18/12C | Premium | 1 | Side | 2 | | |

| 2 | | W:28.25 in | D:36.00 in | Avail Space: 3.26 in | | Ht Space: 10.00 in | |
|------------|------------------------------------|------------|------------|----------------------|-------|--------------------|--|
| UPC | Name | Category | HFacings | Orientation | Units | | |
| 8248812300 | Becks 12/12B | Imports | 1 | Front | 4 | | |
| 7289000159 | Heineken Premium Light 12/12B | Imports | 1 | Side | 3 | | |
| 7199009516 | Blue Moon Belgian White Ale 12/12B | Specialty | 1 | Side | 3 | | |

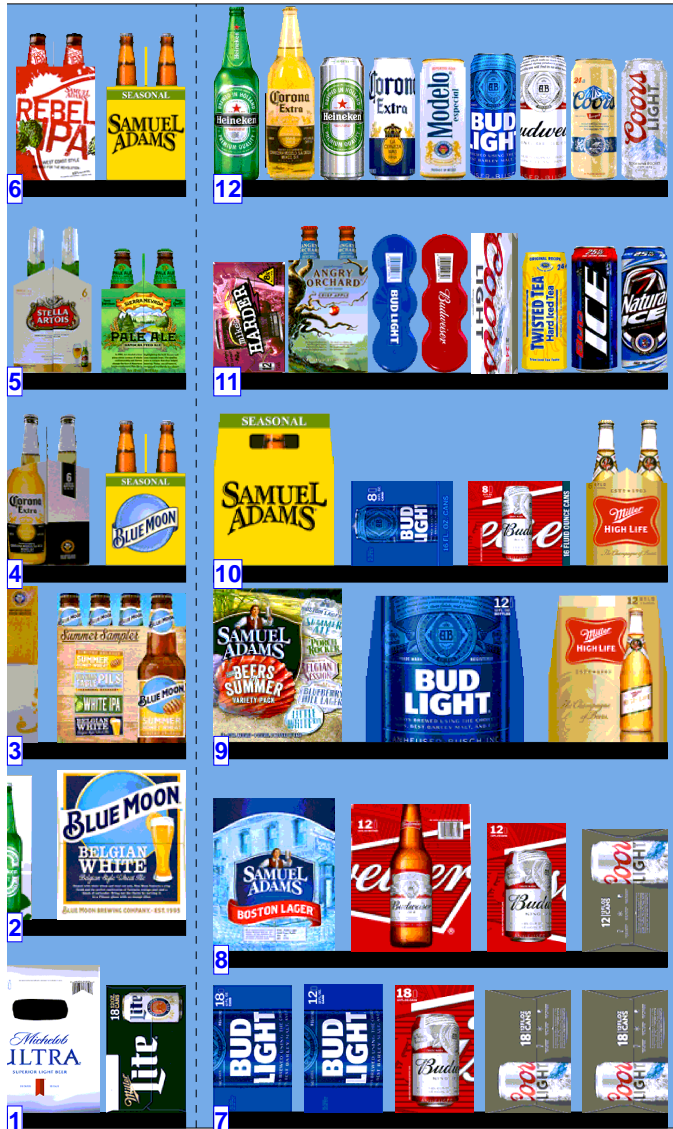
| 3 | | W:28.25 in | D:36.00 in | Avail Space: 2.45 in | | Ht Space: 10.00 in | |
|------------|------------------------------------|------------|------------|----------------------|-------|--------------------|--|
| UPC | Name | Category | HFacings | Orientation | Units | | |
| 8066095615 | Corona Extra 12/12B | Imports | 1 | Front | 4 | | |
| 8066095675 | Corona Light 12/12B | Imports | 1 | Side | 3 | | |
| 7199009554 | Blue Moon Brewmaster's Sampler ... | Specialty | 1 | Side | 3 | | |

| 4 | | W:28.25 in | D:36.00 in | Avail Space: 3.01 in | | Ht Space: 11.00 in | |
|------------|--------------------------|------------|------------|----------------------|-------|--------------------|--|
| UPC | Name | Category | HFacings | Orientation | Units | | |
| 8066095615 | Corona Extra 12/12B | Imports | 1 | Front | 4 | | |
| 8066095695 | Corona Extra 12/12C | Imports | 1 | Side | 3 | | |
| 8066095605 | Corona Extra 6/12B | Imports | 1 | Side | 4 | | |
| 7199009532 | Blue Moon Seasonal 6/12B | Specialty | 1 | Side | 4 | | |

| 5 | | W:28.25 in | D:36.00 in | Avail Space: 1.79 in | | Ht Space: 11.00 in | |
|-------------|------------------------------|------------|------------|----------------------|-------|--------------------|--|
| UPC | Name | Category | HFacings | Orientation | Units | | |
| 8066095757 | Modelo 12/12B | Imports | 1 | Side | 2 | | |
| 78615000014 | Stella Artois 12/11B | Imports | 1 | Side | 3 | | |
| 78615000001 | Stella Artois 6/11B | Imports | 1 | Side | 4 | | |
| 8378337521 | Sierra Nevada Pale Ale 6/12B | Micro | 1 | Side | 4 | | |

| 6 | | W:28.25 in | D:36.00 in | Avail Space: 2.67 in | | Ht Space: 11.00 in | |
|------------|------------------------------|------------|------------|----------------------|-------|--------------------|--|
| UPC | Name | Category | HFacings | Orientation | Units | | |
| 8066095715 | Modelo 12/12C | Imports | 1 | Side | 3 | | |
| 8066095765 | Modelo 6/12B | Imports | 1 | Side | 4 | | |
| 7289000011 | Heineken 6/12B | Imports | 1 | Side | 4 | | |
| 8769200127 | Samuel Adams Rebel IPA 6/12B | Micro | 1 | Side | 4 | | |
| 8769230050 | Samuel Adams Seasonal 6/12B | Micro | 1 | Side | 4 | | |

WALGREENS 5439.psa



Store # 5439 H: 5 ft 10.00 in W: 5 ft D: 2 ft 3.00 in # of segments: 2

| 7 | | W:28.25 in | D:36.00 in | Avail Space: 3.07 in | | Ht Space: 9.00 in | |
|------------|--------------------|------------|------------|----------------------|-------|-------------------|--|
| UPC | Name | Category | HFacings | Orientation | Units | | |
| 1820053218 | Bud Light 18/12C | Premium | 1 | Side | 2 | | |
| 1820053047 | Bud Light 12/12C | Premium | 1 | Side | 3 | | |
| 1820011218 | Budweiser 18/12C | Premium | 1 | Side | 2 | | |
| 7199030017 | Coors Light 18/12C | Premium | 2 | Side | 4 | | |

| 8 | | W:28.25 in | D:36.00 in | Avail Space: 3.17 in | | Ht Space: 12.00 in | |
|------------|--------------------------------|------------|------------|----------------------|-------|--------------------|--|
| UPC | Name | Category | HFacings | Orientation | Units | | |
| 8769210014 | Samuel Adams Boston Lgr 12/12B | Micro | 1 | Side | 3 | | |
| 1820000771 | Budweiser 12/12B | Premium | 1 | Side | 3 | | |
| 1820011047 | Budweiser 12/12C | Premium | 1 | Side | 3 | | |
| 7199000048 | Coors Light 12/12C | Premium | 1 | Side | 3 | | |

| 9 | | W:28.25 in | D:36.00 in | Avail Space: 3.01 in | | Ht Space: 10.00 in | |
|------------|-------------------------------------|-------------|------------|----------------------|-------|--------------------|--|
| UPC | Name | Category | HFacings | Orientation | Units | | |
| 8769229103 | Samuel Adams Ssnl Variety-Mix Pk... | Micro | 1 | Side | 3 | | |
| 1820000769 | Bud Light 12/12B | Premium | 1 | Front | 4 | | |
| 3410001509 | Miller High Life 12/12B | Sub Premium | 1 | Side | 3 | | |

| 10 | | W:28.25 in | D:36.00 in | Avail Space: 3.10 in | | Ht Space: 11.00 in | |
|------------|------------------------------|-------------|------------|----------------------|-------|--------------------|--|
| UPC | Name | Category | HFacings | Orientation | Units | | |
| 8769201103 | Samuel Adams Seasonal 12/12B | Micro | 1 | Side | 3 | | |
| 1820008989 | Bud Light 8/16C | Premium | 1 | Side | 3 | | |
| 1820008981 | Budweiser 8/16C | Premium | 1 | Side | 3 | | |
| 3410001505 | Miller High Life 6/12B | Sub Premium | 1 | Side | 4 | | |

| 11 | | W:28.25 in | D:36.00 in | Avail Space: 1.66 in | | Ht Space: 11.00 in | |
|-------------|----------------------------------|-------------|------------|----------------------|-------|--------------------|--|
| UPC | Name | Category | HFacings | Orientation | Units | | |
| 63598525948 | Mikes HARDER Blk Cherry Lemon... | FMB | 1 | Side | 3 | | |
| 8769282102 | Angry Orchard Crisp Apple 6/12B | Cider | 1 | Side | 4 | | |
| 1820021986 | Bud Light 3/25C | Premium | 1 | Top 90 | 4 | | |
| 1820021985 | Budweiser 3/25C | Premium | 1 | Top 90 | 4 | | |
| 7199030120 | Coors Light 3/24C | Premium | 1 | Top 90 | 4 | | |
| 8769283231 | Twisted Tea 1/24C | FMB | 1 | Front | 12 | | |
| 1820025006 | Bud Ice 1/25C | Sub Premium | 1 | Front | 12 | | |
| 1820025008 | Natural Ice 1/25C | Sub Premium | 1 | Front | 12 | | |

| 12 | | W:28.25 in | D:36.00 in | Avail Space: 2.12 in | | Ht Space: 11.00 in | |
|------------|--------------------|------------|------------|----------------------|-------|--------------------|--|
| UPC | Name | Category | HFacings | Orientation | Units | | |
| 7289000478 | Heineken 1/22B | Imports | 1 | Front | 12 | | |
| 8066095641 | Corona Extra 1/24B | Imports | 1 | Front | 11 | | |
| 7289000119 | Heineken 1/24C | Imports | 1 | Front | 12 | | |
| 8066095643 | Corona Extra 1/24C | Imports | 1 | Front | 12 | | |
| 8066095721 | Modelo 1/24C | Imports | 1 | Front | 12 | | |
| 1820025001 | Bud Light 1/25C | Premium | 1 | Front | 12 | | |
| 1820025000 | Budweiser 1/25C | Premium | 1 | Front | 12 | | |
| 7199010071 | Coors 1/24C | Premium | 1 | Front | 12 | | |
| 7199030065 | Coors Light 1/24C | Premium | 1 | Front | 12 | | |