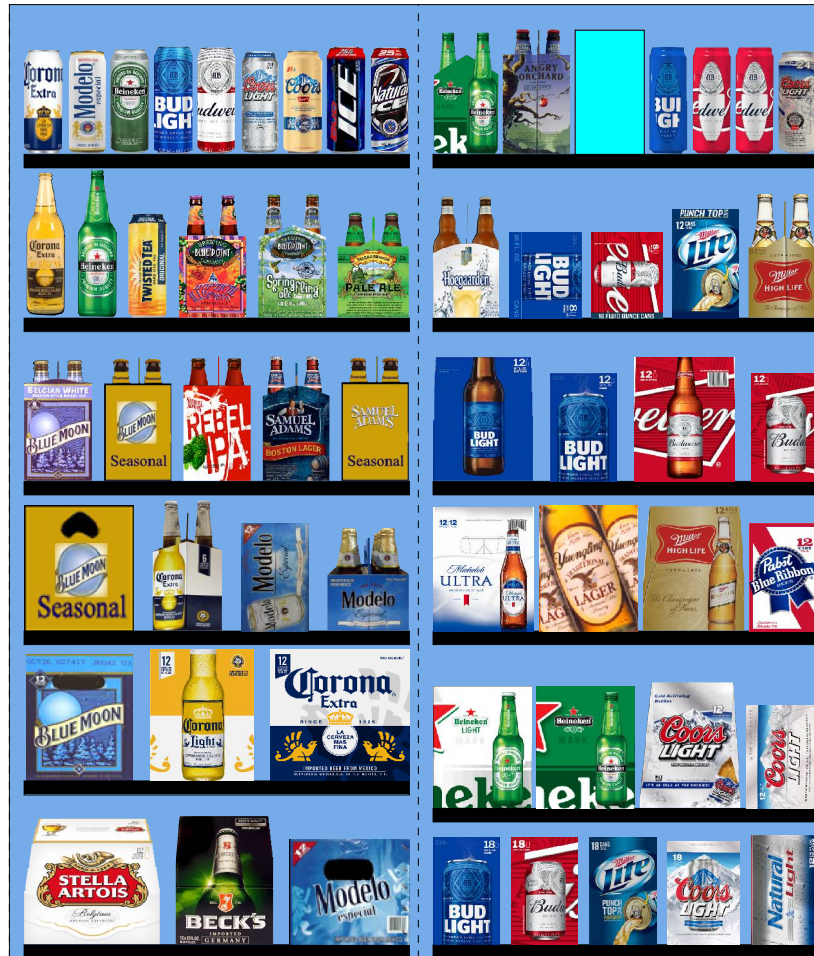


9865.psa For Validation Purposes Only NOT FINAL



Printed: 4/14/2016

Traffic Flow Left-right

POG: 9865.psa



POG Size: 5'0.00

Segments 1 - 2 of 2

Page: 1

SCHEMATIC BACKING REPORT

9865.psa

Planogram: 9865.psa

Segment #1 : Shelf #6 DEPTH: 36 in WIDTH: 28 in DISTANCE FROM TOP OF BASE SHELF TO BOTTOM OF SHELF: 0.00 in

POS	# FAC	UPC	ID	NAME	CASES	CAPACITY	UNITS HIGH	DOS	MVMT
28	1	78615000014	78615000014	Stella Artois 12/11B	2.0	4	1	13.3	2.1
29	1	8248812300	8248812300	Becks 12/12B	1.5	3	1	6.8	3.1
30	1	8066095757	8066095757	Modelo 12/12B	1.0	2	1	0.0	0.0

Segment #1 : Shelf #5 DEPTH: 36 in WIDTH: 28 in DISTANCE FROM TOP OF BASE SHELF TO BOTTOM OF SHELF: 12.00 in

POS	# FAC	UPC	ID	NAME	CASES	CAPACITY	UNITS HIGH	DOS	MVMT
25	1	7199009516	7199009516	Blue Moon Belgian White Ale 12/12B	1.5	3	1	32.7	0.6
26	1	8066095675	8066095675	Corona Light 12/12B	1.5	3	1	6.4	3.3
27	1	8066095615	8066095615	Corona Extra 12/12B	2.0	4	1	5.1	5.4

Segment #1 : Shelf #4 DEPTH: 36 in WIDTH: 28 in DISTANCE FROM TOP OF BASE SHELF TO BOTTOM OF SHELF: 23.00 in

POS	# FAC	UPC	ID	NAME	CASES	CAPACITY	UNITS HIGH	DOS	MVMT
21	1	7199009536	7199009536	Blue Moon Seasonal 12/12B	1.5	3	1	75.0	0.3
22	1	8066095605	8066095605	Corona Extra 6/12B	1.0	4	1	57.7	0.5
23	1	8066095715	8066095715	Modelo 12/12C	1.5	3	1	34.7	0.6
24	1	8066095765	8066095765	Modelo 6/12B	1.0	4	1	0.0	0.0

Segment #1 : Shelf #3 DEPTH: 36 in WIDTH: 28 in DISTANCE FROM TOP OF BASE SHELF TO BOTTOM OF SHELF: 34.00 in

POS	# FAC	UPC	ID	NAME	CASES	CAPACITY	UNITS HIGH	DOS	MVMT
16	1	7199009511	7199009511	Blue Moon Belgian White Ale 6/12B	1.0	4	1	26.0	1.1
17	1	7199009532	7199009532	Blue Moon Seasonal 6/12B	1.0	4	1	40.5	0.7
18	1	8769200127	8769200127	Samuel Adams Rebel IPA 6/12B	1.0	4	1	36.4	0.8
19	1	8769210012	8769210012	Samuel Adams Boston Lgr 6/12B	1.0	4	1	60.6	0.5
20	1	8769230050	8769230050	Samuel Adams Seasonal 6/12B	1.0	4	1	51.8	0.5

Segment #1 : Shelf #2 DEPTH: 36 in WIDTH: 28 in DISTANCE FROM TOP OF BASE SHELF TO BOTTOM OF SHELF: 46.00 in

POS	# FAC	UPC	ID	NAME	CASES	CAPACITY	UNITS HIGH	DOS	MVMT
10	1	8066095641	8066095641	Corona Extra 1/24B	0.9	11	1	0.0	0.0
11	1	7289000478	7289000478	Heineken 1/22B	1.0	12	1	0.0	0.0
12	1	8769283231	8769283231	Twisted Tea 1/24C	1.0	12	1	0.0	0.0
13	1	68174511102	68174511102	Blue Point Hoptical Illusion 6/12B	1.0	4	1	26.0	1.1
14	1	68174511118	68174511118	Blue Point Seasonal 6/12B	1.0	4	1	30.3	0.9
15	1	8378337521	8378337521	Sierra Nevada Pale Ale 6/12B	1.0	4	1	58.2	0.5

Segment #1 : Shelf #1 DEPTH: 36 in WIDTH: 28 in DISTANCE FROM TOP OF BASE SHELF TO BOTTOM OF SHELF: 58.00 in

POS	# FAC	UPC	ID	NAME	CASES	CAPACITY	UNITS HIGH	DOS	MVMT
1	1	8066095643	8066095643	Corona Extra 1/24C	1.0	12	1	68.2	1.2
2	1	8066095721	8066095721	Modelo 1/24C	1.0	12	1	0.0	0.0
3	1	7289000119	7289000119	Heineken 1/24C	1.0	12	1	2896.6	0.0
4	1	1820025001	1820025001	Bud Light 1/25C	0.8	12	1	53.2	1.6
5	1	1820025000	1820025000	Budweiser 1/25C	0.8	12	1	15.6	5.4
6	1	7199030065	7199030065	Coors Light 1/24C	1.0	12	1	29.7	2.8
7	1	7199010071	7199010071	Coors 1/24C	1.0	12	1	8.1	10.4
8	1	1820025006	1820025006	Bud Ice 1/25C	0.8	12	1	0.0	0.0
9	1	1820025008	1820025008	Natural Ice 1/25C	0.8	12	1	0.0	0.0

Segment #2 : Shelf #6 DEPTH: 36 in WIDTH: 28 in DISTANCE FROM TOP OF BASE SHELF TO BOTTOM OF SHELF: 0.00 in

SCHEMATIC BACKING REPORT

9865.psa

POS	# FAC	UPC	ID	NAME	CASES	CAPACITY	UNITS HIGH	DOS	MVMT
54	1	1820053218	1820053218	Bud Light 18/12C	2.0	2	1	2.4	5.8
55	1	1820011218	1820011218	Budweiser 18/12C	2.0	2	1	2.8	4.9
56	1	3410057340	3410057340	Miller Lite 18/12C	2.0	2	1	10.5	1.3
57	1	7199030017	7199030017	Coors Light 18/12C	2.0	2	1	2.7	5.2
58	1	1820015047	1820015047	Natural Light 12/12C	1.5	3	1	10.6	2.0

Segment #2 : Shelf #5 DEPTH: 36 in WIDTH: 28 in DISTANCE FROM TOP OF BASE SHELF TO BOTTOM OF SHELF: 10.00 in

POS	# FAC	UPC	ID	NAME	CASES	CAPACITY	UNITS HIGH	DOS	MVMT
50	1	7289000159	7289000159	Heineken Premium Light 12/12B	1.5	3	1	16.4	1.3
51	1	7289000016	7289000016	Heineken 12/12B	1.5	3	1	4.8	4.4
52	1	7199030069	7199030069	Coors Light 12/12B	1.5	3	1	11.8	1.8
53	1	7199000048	7199000048	Coors Light 12/12C	1.5	3	1	24.9	0.8

Segment #2 : Shelf #4 DEPTH: 36 in WIDTH: 28 in DISTANCE FROM TOP OF BASE SHELF TO BOTTOM OF SHELF: 23.00 in

POS	# FAC	UPC	ID	NAME	CASES	CAPACITY	UNITS HIGH	DOS	MVMT
46	1	1820005990	1820005990	Michelob Ultra 12/12B	1.5	3	1	14.4	1.5
47	1	8992427896	8992427896	Yuengling Traditional Lager 12/12B	1.5	3	1	20.6	1.0
48	1	3410001509	3410001509	Miller High Life 12/12B	1.5	3	1	15.6	1.3
49	1	2210000170	2210000170	Pabst 12/12C	1.5	3	1	11.9	1.8

Segment #2 : Shelf #3 DEPTH: 36 in WIDTH: 28 in DISTANCE FROM TOP OF BASE SHELF TO BOTTOM OF SHELF: 34.00 in

POS	# FAC	UPC	ID	NAME	CASES	CAPACITY	UNITS HIGH	DOS	MVMT
42	1	1820000769	1820000769	Bud Light 12/12B	1.5	3	1	22.6	0.9
43	1	1820053047	1820053047	Bud Light 12/12C	1.5	3	1	5.3	4.0
44	1	1820000771	1820000771	Budweiser 12/12B	1.5	3	1	49.6	0.4
45	1	1820011047	1820011047	Budweiser 12/12C	1.5	3	1	8.6	2.4

Segment #2 : Shelf #2 DEPTH: 36 in WIDTH: 28 in DISTANCE FROM TOP OF BASE SHELF TO BOTTOM OF SHELF: 46.00 in

POS	# FAC	UPC	ID	NAME	CASES	CAPACITY	UNITS HIGH	DOS	MVMT
37	1	78615000036	78615000036	Hoegaarden 6/11B	1.0	4	1	18.2	1.5
38	1	1820008989	1820008989	Bud Light 8/16C	1.0	3	1	0.0	0.0
39	1	1820008981	1820008981	Budweiser 8/16C	1.0	3	1	0.0	0.0
40	1	3410057636	3410057636	Miller Lite 12/12C	1.5	3	1	16.1	1.3
41	1	3410001505	3410001505	Miller High Life 6/12B	1.0	4	1	0.0	0.0

Segment #2 : Shelf #1 DEPTH: 36 in WIDTH: 28 in DISTANCE FROM TOP OF BASE SHELF TO BOTTOM OF SHELF: 58.00 in

POS	# FAC	UPC	ID	NAME	CASES	CAPACITY	UNITS HIGH	DOS	MVMT
31	1	7289000011	7289000011	Heineken 6/12B	1.0	4	1	43.7	0.6
32	1	8769282102	8769282102	Angry Orchard Crisp Apple 6/12B	1.0	4	1	0.0	0.0
33	1	88715100213	88715100213	Coney Island Hard Root Beer 6/12B	1.0	4	1	15.8	1.8
34	1	1820021986	1820021986	Bud Light 3/25C	0.8	4	1	69.5	0.4
35	2	1820021985	1820021985	Budweiser 3/25C	1.6	8	1	22.1	2.5
36	1	7199030120	7199030120	Coors Light 3/24C	0.8	4	1	76.9	0.4

SKUs on Planogram: 58

UNALLOCATED ITEMS/OPTIONAL ITEMS

9865.psa

UNALLOCATED SKU REPORT

	UPC	NAME	MVMT	Profit	Sales	Category	Manufacturer
1	7199047712	Keystone Ice 1/24C	1.000	\$0.00	\$0.00	Sub Premium	MillerCoors
2	3410000355	Miller Lite 1/24C	0.850	\$0.00	\$0.00	Premium	MillerCoors
3	63598510062	Mikes Hard Lemonade 6/11B	0.692	\$0.00	\$0.00	FMB	Mark Anthony Brands
4	8797502650	Sapporo Draft 1/22C	0.628	\$0.00	\$0.00	Imports	Import
5	7289000158	Heineken Premium Light 6/12B	0.462	\$0.00	\$0.00	Imports	Heineken USA
6	68174511112	Blue Point Toasted Lager 6/12B	0.385	\$0.00	\$0.00	Micro	Anheuser-Busch InBev
7	1820014990	Bud Light Lime 12/12B	0.300	\$0.00	\$0.00	Specialty	Anheuser-Busch InBev
8	7289000020	Heineken 12/12C	0.277	\$0.00	\$0.00	Imports	Heineken USA
9	3410057509	Miller Lite 12/12B	0.272	\$0.00	\$0.00	Premium	MillerCoors
10	7199000008	Coors Light 6/12C	0.231	\$0.00	\$0.00	Premium	MillerCoors
11	1820020998	Bud Light 8/16AL	0.231	\$0.00	\$0.00	Premium	Anheuser-Busch InBev
12	3410008813	Miller Fortune 12/12B	0.231	\$0.00	\$0.00	Specialty	MillerCoors
13	8382010401	Guinness Draught 6/11B	0.231	\$0.00	\$0.00	Imports	Diageo
14	1820018992	Bud Light Platinum 12/12B	0.164	\$0.00	\$0.00	Specialty	Anheuser-Busch InBev
15	8992427891	Yuengling Traditional Lager 6/12B	0.154	\$0.00	\$0.00	Premium	DG Yuengling & Sons
16	1820000964	Natural Ice 12/12C	0.154	\$0.00	\$0.00	Sub Premium	Anheuser-Busch InBev
17	8769229103	Samuel Adams Ssnl Variety-Mix Pk 12/...	0.154	\$0.00	\$0.00	Micro	Boston Beer
18	7199048004	Keystone Light 12/12C	0.154	\$0.00	\$0.00	Sub Premium	MillerCoors
19	3410057505	Miller Lite 6/12B	0.149	\$0.00	\$0.00	Premium	MillerCoors
20	8769201103	Samuel Adams Seasonal 12/12B	0.135	\$0.00	\$0.00	Micro	Boston Beer
21	7199030005	Coors Light 6/12B	0.079	\$0.00	\$0.00	Premium	MillerCoors
22	3410051607	Leinenkugel Seasonal Shandy 12/12B	0.077	\$0.00	\$0.00	Specialty	MillerCoors
23	8992429386	Yuengling Black & Tan 12/12B	0.077	\$0.00	\$0.00	Premium	DG Yuengling & Sons
24	1820013986	Shock Top Belgian White Ale 6/12B	0.073	\$0.00	\$0.00	Specialty	Anheuser-Busch InBev
25	8769210014	Samuel Adams Boston Lgr 12/12B	0.051	\$0.00	\$0.00	Micro	Boston Beer
26	7199048024	Keystone Light 1/24C	0.042	\$0.00	\$0.00	Sub Premium	MillerCoors
27	8382012360	Guinness Draught 4/15C	0.038	\$0.00	\$0.00	Imports	Diageo
28	7199009554	Blue Moon Brewmaster's Sampler 12/1...	0.022	\$0.00	\$0.00	Specialty	MillerCoors
29	7289010016	Amstel Light 12/12B	0.019	\$0.00	\$0.00	Imports	Heineken USA
30	1820022992	Bud Light Lime-A-Rita Seasonal 12/8C	0.007	\$0.00	\$0.00	FMB	Anheuser-Busch InBev
31	7199070002	George Killian's Irish Red 6/12B	0.000	\$0.00	\$0.00	Specialty	MillerCoors
32	88715100195	Coney Island Overpass IPA 6/12B	0.000	\$0.00	\$0.00	Micro	Boston Beer
33	8378333100	Sierra Nevada Torpedo Extra IPA 6/12B	0.000	\$0.00	\$0.00	Micro	Sierra Nevada
34	8769200017	Angry Orchard Variety Pack 12/12B	0.000	\$0.00	\$0.00	Cider	Boston Beer
35	63848900029	Dogfish Head 60 Minute IPA 6/12B	0.000	\$0.00	\$0.00	Micro	Micro Breweries
36	7231163012	Dos Equis Lager 6/12B	0.000	\$0.00	\$0.00	Imports	Heineken USA
37	79603011493	Kona Castaway IPA 6/12B	0.000	\$0.00	\$0.00	Micro	Anheuser-Busch InBev
38	18195400002	Peroni Nastro Azzuro 6/12B	0.000	\$0.00	\$0.00	Imports	MillerCoors
39	8834510151	Strongbow Gold Hard Cider 6/11B	0.000	\$0.00	\$0.00	Cider	Heineken USA
40	3410057023	Miller Lite 9/16AL	0.000	\$0.00	\$0.00	Premium	MillerCoors
41	3410031602	Milwaukee's Best 12/12C	0.000	\$0.00	\$0.00	Sub Premium	MillerCoors
42	68174512252	Blue Point Mosaic Session IPA 4/16C	0.000	\$0.00	\$0.00	Micro	Anheuser-Busch InBev
43	8200072385	Smirnoff Ice 6/11B	0.000	\$0.00	\$0.00	FMB	Diageo
44	3410000349	Redd's Wicked Mango 1/24C	0.000	\$0.00	\$0.00	Specialty	MillerCoors
45	78615000001	Stella Artois 6/11B	0.000	\$0.00	\$0.00	Imports	Anheuser-Busch InBev
46	7089718331	Fosters Premium Ale 1/25C	0.000	\$0.00	\$0.00	Imports	MillerCoors
47	3410051605	Leinenkugel Seasonal Shandy 6/12B	0.000	\$0.00	\$0.00	Specialty	MillerCoors
48	8382056793	Red Stripe 6/12B	0.000	\$0.00	\$0.00	Imports	Diageo
49	8769259102	Samuel Adams Latitude 48 IPA 6/12B	0.000	\$0.00	\$0.00	Micro	Boston Beer
50	63598506744	Mikes Hard Black Cherry Lemonade 6/...	0.000	\$0.00	\$0.00	FMB	Mark Anthony Brands
51	79837312125	Magic Hat Variety Pack 12/12B	0.000	\$0.00	\$0.00	Micro	North American Breweri...
52	1820020994	Bud Light Platinum 12/12C SC	0.000	\$0.00	\$0.00	Specialty	Anheuser-Busch InBev
53	76227407531	Bass Pale Ale 12/12B	0.000	\$0.00	\$0.00	Imports	Anheuser-Busch InBev
54	8248812345	Becks 6/12B	0.000	\$0.00	\$0.00	Imports	Anheuser-Busch InBev
55	79837312123	Magic Hat #9 12/12B	0.000	\$0.00	\$0.00	Micro	North American Breweri...
56	1820022988	Bud Light Lime Raz-Ber-Rita 12/8C	0.000	\$0.00	\$0.00	FMB	Anheuser-Busch InBev
57	7231133140	Dos Equis Ambar 12/12B	0.000	\$0.00	\$0.00	Imports	Heineken USA
58	86273700001	Montauk Summer Ale 6/12C	0.000	\$0.00	\$0.00	Micro	Micro Breweries
59	85998900516	Greenport Harbor Otherside IPA 6/12B	0.000	\$0.00	\$0.00	Micro	Micro Breweries
60	8200072751	Smirnoff Ice Green Apple 6/11B	0.000	\$0.00	\$0.00	FMB	Diageo
61	1820096721	Michelob Ultra 18/12C SC	0.000	\$0.00	\$0.00	Specialty	Anheuser-Busch InBev
62	3410008746	Redd's Green Apple 6/12B	0.000	\$0.00	\$0.00	Specialty	MillerCoors
63	8834510005	Newcastle Brown Ale 6/12B	0.000	\$0.00	\$0.00	Imports	Heineken USA

UNALLOCATED ITEMS/OPTIONAL ITEMS

9865.psa

UNALLOCATED SKU REPORT

	UPC	NAME	MVMT	Profit	Sales	Category	Manufacturer
64	8769284102	Angry Orchard Apple Ginger 6/12B	0.000	\$0.00	\$0.00	Cider	Boston Beer
65	8378322822	Sierra Nevada Seasonal 6/12B	0.000	\$0.00	\$0.00	Micro	Sierra Nevada
66	8769200004	Samuel Adams Seasonal Select 6/12B	0.000	\$0.00	\$0.00	Micro	Boston Beer
67	8382012368	Guinness Draught 8/15C	0.000	\$0.00	\$0.00	Imports	Diageo
68	64286020024	Founders All Day IPA 6/12B	0.000	\$0.00	\$0.00	Micro	Micro Breweries
69	7199009561	Blue Moon White IPA 6/12B	0.000	\$0.00	\$0.00	Specialty	MillerCoors
70	3061300071	Brooklyn Variety Pack 12/12B	0.000	\$0.00	\$0.00	Micro	Micro Breweries
71	8382010403	Guinness Draught 12/11B	0.000	\$0.00	\$0.00	Imports	Diageo
72	86273700003	Montauk Session IPA 6/12C	0.000	\$0.00	\$0.00	Micro	Micro Breweries
73	1820023984	Oculto 6/12B	0.000	\$0.00	\$0.00	Micro	Anheuser-Busch InBev
74	8200072754	Smirnoff Ice Raspberry 6/11B	0.000	\$0.00	\$0.00	FMB	Diageo
75	9200002000	Small Town Not Your Fathers RtBr 6/1...	0.000	\$0.00	\$0.00	Micro	Pabst
76	68174521122	Blue Point Variety 12/12B	0.000	\$0.00	\$0.00	Micro	Anheuser-Busch InBev
77	60940872979	Port Jeff Party Boat IPA 6/12C	0.000	\$0.00	\$0.00	Micro	Micro Breweries
78	63598560611	Mikes Hard Cranberry Lemonade 6/11B	0.000	\$0.00	\$0.00	FMB	Mark Anthony Brands
79	7231123012	Dos Equis Lager 12/12B	0.000	\$0.00	\$0.00	Imports	Heineken USA
80	8378337512	Sierra Nevada Pale Ale 12/12B	0.000	\$0.00	\$0.00	Micro	Sierra Nevada
81	63598525948	Mikes HARDER Blk Cherry Lemonade ...	0.000	\$0.00	\$0.00	FMB	Mark Anthony Brands
82	1820021979	Budweiser 8/16AL	0.000	\$0.00	\$0.00	Premium	Anheuser-Busch InBev
83	4182700146	Harpoon Seasonal 6/12B	0.000	\$0.00	\$0.00	Micro	Harpoon
84	1820019987	Bud Light Lime-A-Rita 12/8C	0.000	\$0.00	\$0.00	FMB	Anheuser-Busch InBev
85	81760601000	Captain Lawrence Pale Ale 6/12B	0.000	\$0.00	\$0.00	Micro	Micro Breweries
86	4182700712	Harpoon IPA 12/12B	0.000	\$0.00	\$0.00	Micro	Harpoon
87	85909300244	SixPoint The Crisp 6/12C	0.000	\$0.00	\$0.00	Micro	Micro Breweries
88	1497450009	Woodchuck Amber 6/12B	0.000	\$0.00	\$0.00	Cider	Vermont Hard Cider Co...
89	3410008722	Redd's Apple Ale 12/12B	0.000	\$0.00	\$0.00	Specialty	MillerCoors
90	8992423040	Yuengling Light Lager 12/12B	0.000	\$0.00	\$0.00	Premium	DG Yuengling & Sons
91	85114800506	Great South Bay Seasonal 6/12B	0.000	\$0.00	\$0.00	Micro	Micro Breweries
92	85909300242	SixPoint Sweet Action 6/12C	0.000	\$0.00	\$0.00	Micro	Micro Breweries
93	3410049805	Leinenkugel Sunset Wheat Ale 6/12B	0.000	\$0.00	\$0.00	Specialty	MillerCoors
94	8992495432	Yuengling Black & Tan 6/12B	0.000	\$0.00	\$0.00	Premium	DG Yuengling & Sons
95	2210000004	Pabst 1/24C	0.000	\$0.00	\$0.00	Sub Premium	Pabst
96	3410000323	Redd's Wicked Apple 1/24C	0.000	\$0.00	\$0.00	Specialty	MillerCoors
97	1820011985	Redbridge Lager 6/12B	0.000	\$0.00	\$0.00	Specialty	Anheuser-Busch InBev
98	8382012418	Guinness Nitro IPA 6/11C	0.000	\$0.00	\$0.00	Imports	
99	7199076400	George Killian's Irish Red 12/12B	0.000	\$0.00	\$0.00	Specialty	MillerCoors
100	4182700076	Harpoon IPA 6/12B	0.000	\$0.00	\$0.00	Micro	Harpoon
101	7231163011	Dos Equis Ambar 6/12B	0.000	\$0.00	\$0.00	Imports	Heineken USA
102	85998900522	Greenport Harbor Seasonal 6/12B	0.000	\$0.00	\$0.00	Micro	Micro Breweries
103	85114800500	Great South Bay Blood Orange 6/12B	0.000	\$0.00	\$0.00	Micro	Micro Breweries
104	85998900504	Greenport Harbor Harbor Ale 6/12B	0.000	\$0.00	\$0.00	Micro	Micro Breweries
105	70277008101	Omission Lager 6/12B	0.000	\$0.00	\$0.00	Micro	Anheuser-Busch InBev
106	3061300001	Brooklyn Lager 6/12B	0.000	\$0.00	\$0.00	Micro	Micro Breweries
107	8248812700	Becks NA 6/12B	0.000	\$0.00	\$0.00	Non Alcohol	Anheuser-Busch InBev
108	3410008716	Redd's Apple Ale 6/12B	0.000	\$0.00	\$0.00	Specialty	MillerCoors
109	1820025505	Bud Light Lime Straw-Ber-Rita 1/25C	0.000	\$0.00	\$0.00	FMB	Anheuser-Busch InBev
110	7089701331	Fosters Lager 1/25C	0.000	\$0.00	\$0.00	Imports	MillerCoors
111	1820018993	Bud Light Platinum 6/12B	0.000	\$0.00	\$0.00	Specialty	Anheuser-Busch InBev
112	8769200033	Angry Orchard Crisp Apple 12/12B	0.000	\$0.00	\$0.00	Cider	Boston Beer
113	8382007152	Smithwicks Irish Ale 6/12B	0.000	\$0.00	\$0.00	Imports	Diageo
114	8382012393	Guinness Extra Stout 6/11B	0.000	\$0.00	\$0.00	Imports	Diageo
115	7199030104	Coors Light 9/16AL	0.000	\$0.00	\$0.00	Premium	MillerCoors
116	8066095695	Corona Extra 12/12C	0.000	\$0.00	\$0.00	Imports	Crown Imports LLC
117	1820014991	Bud Light Lime 6/12B	0.000	\$0.00	\$0.00	Specialty	Anheuser-Busch InBev
118	1820000106	Bud Light 6/12C	0.000	\$0.00	\$0.00	Premium	Anheuser-Busch InBev
119	3410008755	Redd's Wicked Black Cherry 12/10C	0.000	\$0.00	\$0.00	Specialty	MillerCoors
120	7248002403	Schaefer 12/12C	0.000	\$0.00	\$0.00	Sub Premium	Pabst
121	9200002009	Small Town Not Your Fathers RtBr 6/1...	0.000	\$0.00	\$0.00	Micro	Pabst
122	1820000833	Bud Light 6/12B	0.000	\$0.00	\$0.00	Premium	Anheuser-Busch InBev
123	3410015509	Miller 64 12/12B	0.000	\$0.00	\$0.00	Premium	MillerCoors
124	1820025005	Budweiser Select 1/25C	0.000	\$0.00	\$0.00	Premium	Anheuser-Busch InBev
125	1820016989	Shock Top Raspberry Wheat 6/12B	0.000	\$0.00	\$0.00	Specialty	Anheuser-Busch InBev
126	86273700000	Montauk Driftwood Ale 6/12C	0.000	\$0.00	\$0.00	Micro	Micro Breweries

UNALLOCATED ITEMS/OPTIONAL ITEMS

9865.psa

UNALLOCATED SKU REPORT

	UPC	NAME	MVMT	Profit	Sales	Category	Manufacturer
127	1820097007	Bud Light Lime Lemon-Ade-Rita 12/8C	0.000	\$0.00	\$0.00	FMB	Anheuser-Busch InBev
128	68174541116	Blue Point Toasted Lager 4/16C	0.000	\$0.00	\$0.00	Micro	Anheuser-Busch InBev
129	8378322812	Sierra Nevada Seasonal 12/12B	0.000	\$0.00	\$0.00	Micro	Sierra Nevada
130	7289010011	Amstel Light 6/12B	0.000	\$0.00	\$0.00	Imports	Heineken USA
131	7199009584	Blue Moon Cinnamon Horchata Ale 6/1...	0.000	\$0.00	\$0.00	Specialty	MillerCoors
132	1820022989	Bud Light Lime Mang-O-Rita 12/8C	0.000	\$0.00	\$0.00	FMB	Anheuser-Busch InBev
133	8066095401	Coronita Extra 6/7B	0.000	\$0.00	\$0.00	Imports	Crown Imports LLC
134	3061300053	Brooklyn Seasonal 6/12B	0.000	\$0.00	\$0.00	Micro	Micro Breweries
135	8769275102	Twisted Tea Half & Half 6/12B	0.000	\$0.00	\$0.00	FMB	Boston Beer
136	76227407131	Bass Pale Ale 6/12B	0.000	\$0.00	\$0.00	Imports	Anheuser-Busch InBev
137	78036980012	Shipyard Seasonal Ale 6/12B	0.000	\$0.00	\$0.00	Micro	Micro Breweries
138	1820079047	O'Doul's 12/12C	0.000	\$0.00	\$0.00	Non Alcohol	Anheuser-Busch InBev
139	1820021998	Shock Top Honeycrisp Apple Wheat 6/...	0.000	\$0.00	\$0.00	Specialty	Anheuser-Busch InBev
140	3410008730	Redd's Strawberry Ale 6/12B	0.000	\$0.00	\$0.00	Specialty	MillerCoors
141	7199017028	Coors 6/12B	0.000	\$0.00	\$0.00	Premium	MillerCoors
142	63598512998	Mikes Hard Variety Pack 12/11B	0.000	\$0.00	\$0.00	FMB	Mark Anthony Brands
143	1820019991	Shock Top Seasonal 12/12B	0.000	\$0.00	\$0.00	Specialty	Anheuser-Busch InBev
144	1820012982	Land Shark Lager 6/12B	0.000	\$0.00	\$0.00	Specialty	Anheuser-Busch InBev
145	73692011439	Goose Island India Pale Ale 4/16C	0.000	\$0.00	\$0.00	Micro	Anheuser-Busch InBev
146	63598506074	Mikes Hard Seasonal 6/11B	0.000	\$0.00	\$0.00	FMB	Mark Anthony Brands
147	8066095625	Corona Light 6/12B	0.000	\$0.00	\$0.00	Imports	Crown Imports LLC
148	68174511130	Blue Point Blueberry Ale 6/12B	0.000	\$0.00	\$0.00	Micro	Anheuser-Busch InBev
149	63848900137	Dogfish Head Namaste 6/12B	0.000	\$0.00	\$0.00	Micro	Micro Breweries
150	4257205715	Clausthaler NA 6/12B	0.000	\$0.00	\$0.00	Non Alcohol	Import
151	8769200149	Angry Orchard Green Apple 6/12B	0.000	\$0.00	\$0.00	Cider	Boston Beer
152	8857370002	Shiner Family Reunion Mix 6/12B	0.000	\$0.00	\$0.00	Micro	Gambrinus
153	63625177612	Stone IPA 6/12B	0.000	\$0.00	\$0.00	Micro	Micro Breweries
154	7167084200	Saranac Adirondack Trail Mix 6/12B	0.000	\$0.00	\$0.00	Micro	FX Matt
155	72383000020	Lagunitas A Little Sumpin Sumpin 6/12B	0.000	\$0.00	\$0.00	Micro	Micro Breweries
156	7167007106	Saranac Twelve Beers 12/12B	0.000	\$0.00	\$0.00	Micro	FX Matt
157	68715190007	Southampton Double White Ale 6/12B	0.000	\$0.00	\$0.00	Micro	Micro Breweries
158	8769200079	Angry Orchard Seasonal 6/12B	0.000	\$0.00	\$0.00	Cider	Boston Beer
159	9200002013	Small Town Not Your Fathers Gngr 6/1...	0.000	\$0.00	\$0.00	Micro	Pabst
160	79837312602	Magic Hat #9 6/12B	0.000	\$0.00	\$0.00	Micro	North American Breweri...
161	64286020007	Founders Dirty Bastard 6/12B	0.000	\$0.00	\$0.00	Micro	Micro Breweries
162	1820012998	Land Shark Lager 12/12B	0.000	\$0.00	\$0.00	Specialty	Anheuser-Busch InBev
163	3410000340	Redd's Variety Pack 12/12B	0.000	\$0.00	\$0.00	Specialty	MillerCoors
164	8769283102	Twisted Tea 6/12B	0.000	\$0.00	\$0.00	FMB	Boston Beer
165	63598525945	Mikes HARDER Lemonade 12/8C	0.000	\$0.00	\$0.00	FMB	Mark Anthony Brands
166	7143934450	Rolling Rock 12/12C	0.000	\$0.00	\$0.00	Sub Premium	Anheuser-Busch InBev
167	7289000174	Heineken 1/169MBR	0.000	\$0.00	\$0.00	Imports	Heineken USA
168	8769200255	Angry Orchard Hop N Mad 6/12B	0.000	\$0.00	\$0.00	Cider	Boston Beer
169	72383000009	Lagunitas IPA 6/12B	0.000	\$0.00	\$0.00	Micro	Micro Breweries
170	8769200129	Samuel Adams Rebel IPA 12/12B	0.000	\$0.00	\$0.00	Micro	Boston Beer
171	1820006991	Michelob Ultra 12/12C SC	0.000	\$0.00	\$0.00	Specialty	Anheuser-Busch InBev
172	7289000000	Heineken 6/12C	0.000	\$0.00	\$0.00	Imports	Heineken USA
173	85909300243	SixPoint Bengali 6/12C	0.000	\$0.00	\$0.00	Micro	Micro Breweries
174	1820002992	O'Doul's Amber 6/12B	0.000	\$0.00	\$0.00	Non Alcohol	Anheuser-Busch InBev
175	8769227102	Samuel Adams Cherry Wht 6/12B	0.000	\$0.00	\$0.00	Micro	Boston Beer
176	1820000031	Natural Light 6/12C	0.000	\$0.00	\$0.00	Sub Premium	Anheuser-Busch InBev
177	8382023473	Harp Lager 6/12B	0.000	\$0.00	\$0.00	Imports	Diageo
178	1820024001	Stella Artois Cidre 6/12B	0.000	\$0.00	\$0.00	Cider	Anheuser-Busch InBev
179	64286090024	Founders All Day IPA 15/12C	0.000	\$0.00	\$0.00	Micro	Micro Breweries
180	9425400015	Post Road Pumpkin Ale 6/12B	0.000	\$0.00	\$0.00	Micro	Micro Breweries
181	1820005989	Michelob Ultra 6/12B	0.000	\$0.00	\$0.00	Specialty	Anheuser-Busch InBev
182	1820000016	Budweiser 6/12C	0.000	\$0.00	\$0.00	Premium	Anheuser-Busch InBev
183	68715190018	Southampton IPA 6/12B	0.000	\$0.00	\$0.00	Micro	Micro Breweries
184	1820000784	O'Doul's 6/12B	0.000	\$0.00	\$0.00	Non Alcohol	Anheuser-Busch InBev
185	8382018132	Guinness Blonde 6/12B	0.000	\$0.00	\$0.00	Imports	Diageo
186	4182700012	Harpoon Mix Pack 12/12B	0.000	\$0.00	\$0.00	Micro	Harpoon
187	1820024008	Stella Artois Gft Pk 1/25B	0.000	\$0.00	\$0.00	Imports	Anheuser-Busch InBev
188	1820015981	Shock Top Belgian White Ale 12/12B	0.000	\$0.00	\$0.00	Specialty	Anheuser-Busch InBev
189	88715100094	Coney Island Mermaid Pilsner 6/12B	0.000	\$0.00	\$0.00	Micro	Boston Beer

UNALLOCATED ITEMS/OPTIONAL ITEMS

9865.psa

UNALLOCATED SKU REPORT

UPC	NAME	MVMT	Profit	Sales	Category	Manufacturer	
190	7143934806	Rolling Rock 6/12B	0.000	\$0.00	\$0.00	Sub Premium	Anheuser-Busch InBev
191	1820017993	Shock Top Seasonal 6/12B	0.000	\$0.00	\$0.00	Specialty	Anheuser-Busch InBev
192	79837312606	Magic Hat Seasonal 6/12B	0.000	\$0.00	\$0.00	Micro	North American Breweri...
193	7199030078	Coors Light 18/12B	0.000	\$0.00	\$0.00	Premium	MillerCoors
194	8857333101	Shiner Bock 6/12B	0.000	\$0.00	\$0.00	Micro	Gambrinus
195	88715100051	Traveler Seasonal Shandy 6/12B	0.000	\$0.00	\$0.00	Micro	Boston Beer
196	3410008749	Redd's Wicked Mango 12/10C	0.000	\$0.00	\$0.00	Specialty	MillerCoors
197	3410008810	Miller Fortune 6/12B	0.000	\$0.00	\$0.00	Specialty	MillerCoors
198	73692011139	Goose Island Seasonal Sampler 12/12B	0.000	\$0.00	\$0.00	Micro	Anheuser-Busch InBev
199	1820017991	Shock Top Sampler 12/12B	0.000	\$0.00	\$0.00	Specialty	Anheuser-Busch InBev
200	78624311990	Flying Dog Raging Btch Belgn Ale 6/12B	0.000	\$0.00	\$0.00	Micro	Micro Breweries
201	1820000834	Budweiser 6/12B	0.000	\$0.00	\$0.00	Premium	Anheuser-Busch InBev
202	3410058805	Leinenkugel Heritage Seasonal 6/12B	0.000	\$0.00	\$0.00	Specialty	MillerCoors
203	83972800411	Big Flats Lager Beer 6/12C	0.000	\$0.00	\$0.00	Sub Premium	Micro Breweries
204	7289000188	Heineken Premium Light 12/12C	0.000	\$0.00	\$0.00	Imports	Heineken USA
205	1820020993	Bud Light Lime Straw-Ber-Rita 12/8C	0.000	\$0.00	\$0.00	FMB	Anheuser-Busch InBev
206	1820021991	Stella Artois Cidre 4/12B	0.000	\$0.00	\$0.00	Cider	Anheuser-Busch InBev