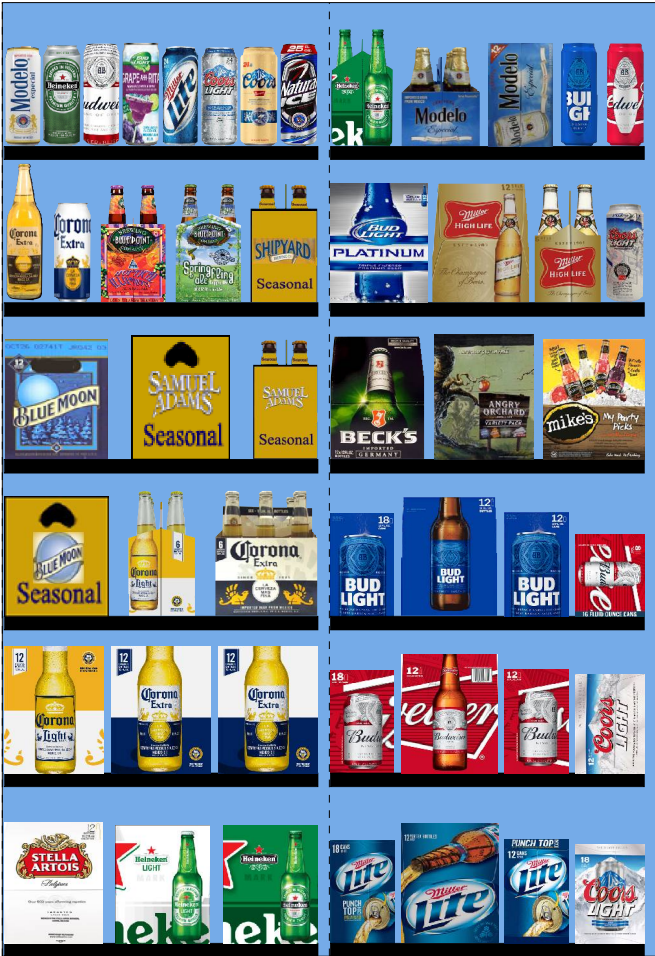


9110.psa For Validation Purposes Only NOT FINAL



Printed: 4/14/2016

Traffic Flow Left-right

POG: 9110.psa



POG Size: 4'2.00

Segments 1 - 2 of 2

Page: 1

# SCHEMATIC BACKING REPORT

9110.psa

## Planogram: 9110.psa

Segment #1 : Shelf #6 DEPTH: 36 in WIDTH: 24 in DISTANCE FROM TOP OF BASE SHELF TO BOTTOM OF SHELF: 0.00 in

POS	# FAC	UPC	ID	NAME	CASES	CAPACITY	UNITS HIGH	DOS	MVMT
22	1	78615000014	78615000014	Stella Artois 12/11B	1.5	3	1	5.8	3.6
23	1	7289000159	7289000159	Heineken Premium Light 12/12B	1.5	3	1	27.7	0.8
24	1	7289000016	7289000016	Heineken 12/12B	1.5	3	1	2.2	9.5

Segment #1 : Shelf #5 DEPTH: 36 in WIDTH: 24 in DISTANCE FROM TOP OF BASE SHELF TO BOTTOM OF SHELF: 13.00 in

POS	# FAC	UPC	ID	NAME	CASES	CAPACITY	UNITS HIGH	DOS	MVMT
20	1	8066095675	8066095675	Corona Light 12/12B	1.5	3	1	15.8	1.3
21	2	8066095615	8066095615	Corona Extra 12/12B	3.0	6	1	2.6	16.0

Segment #1 : Shelf #4 DEPTH: 36 in WIDTH: 24 in DISTANCE FROM TOP OF BASE SHELF TO BOTTOM OF SHELF: 25.00 in

POS	# FAC	UPC	ID	NAME	CASES	CAPACITY	UNITS HIGH	DOS	MVMT
17	1	7199009536	7199009536	Blue Moon Seasonal 12/12B	1.5	3	1	54.5	0.4
18	1	8066095625	8066095625	Corona Light 6/12B	1.0	4	1	36.4	0.8
19	1	8066095605	8066095605	Corona Extra 6/12B	1.5	6	1	13.3	3.2

Segment #1 : Shelf #3 DEPTH: 36 in WIDTH: 24 in DISTANCE FROM TOP OF BASE SHELF TO BOTTOM OF SHELF: 37.00 in

POS	# FAC	UPC	ID	NAME	CASES	CAPACITY	UNITS HIGH	DOS	MVMT
14	1	7199009516	7199009516	Blue Moon Belgian White Ale 12/12B	1.5	3	1	42.2	0.5
15	1	8769201103	8769201103	Samuel Adams Seasonal 12/12B	1.5	3	1	22.1	0.9
16	1	8769230050	8769230050	Samuel Adams Seasonal 6/12B	1.0	4	1	30.3	0.9

Segment #1 : Shelf #2 DEPTH: 36 in WIDTH: 24 in DISTANCE FROM TOP OF BASE SHELF TO BOTTOM OF SHELF: 49.00 in

POS	# FAC	UPC	ID	NAME	CASES	CAPACITY	UNITS HIGH	DOS	MVMT
9	1	8066095641	8066095641	Corona Extra 1/24B	0.9	11	1	0.0	0.0
10	1	8066095643	8066095643	Corona Extra 1/24C	1.0	12	1	0.0	0.0
11	1	68174511102	68174511102	Blue Point Hoptical Illusion 6/12B	1.0	4	1	0.0	0.0
12	1	68174511118	68174511118	Blue Point Seasonal 6/12B	1.0	4	1	74.3	0.4
13	1	78036980012	78036980012	Shipyard Seasonal Ale 6/12B	1.0	4	1	83.8	0.3

Segment #1 : Shelf #1 DEPTH: 36 in WIDTH: 24 in DISTANCE FROM TOP OF BASE SHELF TO BOTTOM OF SHELF: 61.00 in

POS	# FAC	UPC	ID	NAME	CASES	CAPACITY	UNITS HIGH	DOS	MVMT
1	1	8066095721	8066095721	Modelo 1/24C	1.0	12	1	0.0	0.0
2	1	7289000119	7289000119	Heineken 1/24C	1.0	12	1	0.0	0.0
3	1	1820025000	1820025000	Budweiser 1/25C	0.8	12	1	0.0	0.0
4	1	1820025833	1820025833	Bud Light Lime Grape-A-Rita 1/25C	0.8	12	1	0.0	0.0
5	1	3410000355	3410000355	Miller Lite 1/24C	1.0	12	1	0.0	0.0
6	1	7199030065	7199030065	Coors Light 1/24C	1.0	12	1	30.4	2.8
7	1	7199010071	7199010071	Coors 1/24C	1.0	12	1	30.4	2.8
8	1	1820025008	1820025008	Natural Ice 1/25C	0.8	12	1	0.0	0.0

Segment #2 : Shelf #6 DEPTH: 36 in WIDTH: 24 in DISTANCE FROM TOP OF BASE SHELF TO BOTTOM OF SHELF: 0.00 in

POS	# FAC	UPC	ID	NAME	CASES	CAPACITY	UNITS HIGH	DOS	MVMT
45	1	3410057340	3410057340	Miller Lite 18/12C	2.0	2	1	14.0	1.0
46	1	3410057509	3410057509	Miller Lite 12/12B	1.5	3	1	21.0	1.0
47	1	3410057636	3410057636	Miller Lite 12/12C	1.5	3	1	22.9	0.9

## SCHEMATIC BACKING REPORT

9110.psa

48    1    7199030017    7199030017    Coors Light 18/12C    2.0    2    1    10.1    1.4

**Segment #2 : Shelf #5**    DEPTH: 36 in    WIDTH: 24 in    DISTANCE FROM TOP OF BASE SHELF TO BOTTOM OF SHELF: 13.00 in

POS	#	FAC	UPC	ID	NAME	CASES	CAPACITY	UNITS HIGH	DOS	MVMT
41	1		1820011218	1820011218	Budweiser 18/12C	2.0	2	1	4.5	3.1
42	1		1820000771	1820000771	Budweiser 12/12B	1.5	3	1	11.4	1.8
43	1		1820011047	1820011047	Budweiser 12/12C	1.5	3	1	4.1	5.1
44	1		7199000048	7199000048	Coors Light 12/12C	1.5	3	1	91.3	0.2

**Segment #2 : Shelf #4**    DEPTH: 36 in    WIDTH: 24 in    DISTANCE FROM TOP OF BASE SHELF TO BOTTOM OF SHELF: 25.00 in

POS	#	FAC	UPC	ID	NAME	CASES	CAPACITY	UNITS HIGH	DOS	MVMT
37	1		1820053218	1820053218	Bud Light 18/12C	2.0	2	1	7.4	1.9
38	1		1820000769	1820000769	Bud Light 12/12B	1.5	3	1	10.4	2.0
39	1		1820053047	1820053047	Bud Light 12/12C	1.5	3	1	11.6	1.8
40	1		1820008981	1820008981	Budweiser 8/16C	1.0	3	1	0.0	0.0

**Segment #2 : Shelf #3**    DEPTH: 36 in    WIDTH: 24 in    DISTANCE FROM TOP OF BASE SHELF TO BOTTOM OF SHELF: 37.00 in

POS	#	FAC	UPC	ID	NAME	CASES	CAPACITY	UNITS HIGH	DOS	MVMT
34	1		8248812300	8248812300	Becks 12/12B	1.5	3	1	5.3	4.0
35	1		8769200017	8769200017	Angry Orchard Variety Pack 12/12B	1.5	3	1	136.4	0.2
36	1		63598512998	63598512998	Mikes Hard Variety Pack 12/11B	1.5	3	1	68.2	0.3

**Segment #2 : Shelf #2**    DEPTH: 36 in    WIDTH: 24 in    DISTANCE FROM TOP OF BASE SHELF TO BOTTOM OF SHELF: 49.00 in

POS	#	FAC	UPC	ID	NAME	CASES	CAPACITY	UNITS HIGH	DOS	MVMT
30	1		1820018992	1820018992	Bud Light Platinum 12/12B	1.5	3	1	68.6	0.3
31	1		3410001509	3410001509	Miller High Life 12/12B	1.5	3	1	39.4	0.5
32	1		3410001505	3410001505	Miller High Life 6/12B	1.0	4	1	0.0	0.0
33	1		7199030120	7199030120	Coors Light 3/24C	0.8	4	1	91.5	0.3

**Segment #2 : Shelf #1**    DEPTH: 36 in    WIDTH: 24 in    DISTANCE FROM TOP OF BASE SHELF TO BOTTOM OF SHELF: 61.00 in

POS	#	FAC	UPC	ID	NAME	CASES	CAPACITY	UNITS HIGH	DOS	MVMT
25	1		7289000011	7289000011	Heineken 6/12B	1.0	4	1	26.0	1.1
26	1		8066095765	8066095765	Modelo 6/12B	1.0	4	1	0.0	0.0
27	1		8066095715	8066095715	Modelo 12/12C	1.5	3	1	552.6	0.0
28	1		1820021986	1820021986	Bud Light 3/25C	0.8	4	1	0.0	0.0
29	1		1820021985	1820021985	Budweiser 3/25C	0.8	4	1	0.0	0.0

SKUs on Planogram: 48

**UNALLOCATED ITEMS/OPTIONAL ITEMS**

9110.psa

**UNALLOCATED SKU REPORT**

	<b>UPC</b>	<b>NAME</b>	<b>MVMT</b>	<b>Profit</b>	<b>Sales</b>	<b>Category</b>	<b>Manufacturer</b>
1	1820015047	Natural Light 12/12C	0.478	\$0.00	\$0.00	Sub Premium	Anheuser-Busch InBev
2	2210000170	Pabst 12/12C	0.417	\$0.00	\$0.00	Sub Premium	Pabst
3	3410051605	Leinenkugel Seasonal Shandy 6/12B	0.308	\$0.00	\$0.00	Specialty	MillerCoors
4	63598506074	Mikes Hard Seasonal 6/11B	0.308	\$0.00	\$0.00	FMB	Mark Anthony Brands
5	7199030069	Coors Light 12/12B	0.245	\$0.00	\$0.00	Premium	MillerCoors
6	1820005990	Michelob Ultra 12/12B	0.231	\$0.00	\$0.00	Specialty	Anheuser-Busch InBev
7	8769283102	Twisted Tea 6/12B	0.231	\$0.00	\$0.00	FMB	Boston Beer
8	63598506744	Mikes Hard Black Cherry Lemonade 6/...	0.231	\$0.00	\$0.00	FMB	Mark Anthony Brands
9	7199009532	Blue Moon Seasonal 6/12B	0.224	\$0.00	\$0.00	Specialty	MillerCoors
10	7199030005	Coors Light 6/12B	0.158	\$0.00	\$0.00	Premium	MillerCoors
11	1820000964	Natural Ice 12/12C	0.154	\$0.00	\$0.00	Sub Premium	Anheuser-Busch InBev
12	63598525948	Mikes HARDER Blk Cherry Lemonade ...	0.154	\$0.00	\$0.00	FMB	Mark Anthony Brands
13	63598510062	Mikes Hard Lemonade 6/11B	0.154	\$0.00	\$0.00	FMB	Mark Anthony Brands
14	8834510151	Strongbow Gold Hard Cider 6/11B	0.154	\$0.00	\$0.00	Cider	Heineken USA
15	4182790046	Harpoon UFO Seasonal 6/12B	0.154	\$0.00	\$0.00	Micro	Harpoon
16	63598506611	Mikes Hard Cranberry Lemonade 6/11B	0.154	\$0.00	\$0.00	FMB	Mark Anthony Brands
17	3410000340	Redd's Variety Pack 12/12B	0.077	\$0.00	\$0.00	Specialty	MillerCoors
18	7199009691	Smith & Forge Hard Cider 6/12C	0.077	\$0.00	\$0.00	Cider	MillerCoors
19	8200072754	Smirnoff Ice Raspberry 6/11B	0.077	\$0.00	\$0.00	FMB	Diageo
20	8066095757	Modelo 12/12B	0.077	\$0.00	\$0.00	Imports	Crown Imports LLC
21	1820014990	Bud Light Lime 12/12B	0.070	\$0.00	\$0.00	Specialty	Anheuser-Busch InBev
22	8769210014	Samuel Adams Boston Lgr 12/12B	0.069	\$0.00	\$0.00	Micro	Boston Beer
23	7199009511	Blue Moon Belgian White Ale 6/12B	0.051	\$0.00	\$0.00	Specialty	MillerCoors
24	1820022989	Bud Light Lime Mang-O-Rita 12/8C	0.038	\$0.00	\$0.00	FMB	Anheuser-Busch InBev
25	8769282102	Angry Orchard Crisp Apple 6/12B	0.021	\$0.00	\$0.00	Cider	Boston Beer
26	1820025505	Bud Light Lime Straw-Ber-Rita 1/25C	0.020	\$0.00	\$0.00	FMB	Anheuser-Busch InBev
27	1820022992	Bud Light Lime-A-Rita Seasonal 12/8C	0.020	\$0.00	\$0.00	FMB	Anheuser-Busch InBev
28	89968800011	Keegan Ales Old Capital 6/12B	0.019	\$0.00	\$0.00	Micro	Micro Breweries
29	1820020993	Bud Light Lime Straw-Ber-Rita 12/8C	0.014	\$0.00	\$0.00	FMB	Anheuser-Busch InBev
30	1820019987	Bud Light Lime-A-Rita 12/8C	0.013	\$0.00	\$0.00	FMB	Anheuser-Busch InBev
31	7167007106	Saranac Twelve Beers 12/12B	0.012	\$0.00	\$0.00	Micro	FX Matt
32	1820019991	Shock Top Seasonal 12/12B	0.010	\$0.00	\$0.00	Specialty	Anheuser-Busch InBev
33	1820017993	Shock Top Seasonal 6/12B	0.010	\$0.00	\$0.00	Specialty	Anheuser-Busch InBev
34	1820015981	Shock Top Belgian White Ale 12/12B	0.000	\$0.00	\$0.00	Specialty	Anheuser-Busch InBev
35	7289000000	Heineken 6/12C	0.000	\$0.00	\$0.00	Imports	Heineken USA
36	8200072751	Smirnoff Ice Green Apple 6/11B	0.000	\$0.00	\$0.00	FMB	Diageo
37	81760601000	Captain Lawrence Pale Ale 6/12B	0.000	\$0.00	\$0.00	Micro	Micro Breweries
38	18195400002	Peroni Nastro Azzuro 6/12B	0.000	\$0.00	\$0.00	Imports	MillerCoors
39	79837312123	Magic Hat #9 12/12B	0.000	\$0.00	\$0.00	Micro	North American Breweri...
40	72383000009	Lagunitas IPA 6/12B	0.000	\$0.00	\$0.00	Micro	Micro Breweries
41	9425400015	Post Road Pumpkin Ale 6/12B	0.000	\$0.00	\$0.00	Micro	Micro Breweries
42	8382018132	Guinness Blonde 6/12B	0.000	\$0.00	\$0.00	Imports	Diageo
43	1820000016	Budweiser 6/12C	0.000	\$0.00	\$0.00	Premium	Anheuser-Busch InBev
44	1820020998	Bud Light 8/16AL	0.000	\$0.00	\$0.00	Premium	Anheuser-Busch InBev
45	88715100094	Coney Island Mermaid Pilsner 6/12B	0.000	\$0.00	\$0.00	Micro	Boston Beer
46	1820024008	Stella Artois Gft Pk 1/25B	0.000	\$0.00	\$0.00	Imports	Anheuser-Busch InBev
47	7199030104	Coors Light 9/16AL	0.000	\$0.00	\$0.00	Premium	MillerCoors
48	79837312606	Magic Hat Seasonal 6/12B	0.000	\$0.00	\$0.00	Micro	North American Breweri...
49	63848900029	Dogfish Head 60 Minute IPA 6/12B	0.000	\$0.00	\$0.00	Micro	Micro Breweries
50	63598506822	Mikes Hard Light Lemonade 6/11B	0.000	\$0.00	\$0.00	FMB	Mark Anthony Brands
51	1820005989	Michelob Ultra 6/12B	0.000	\$0.00	\$0.00	Specialty	Anheuser-Busch InBev
52	8382010401	Guinness Draught 6/11B	0.000	\$0.00	\$0.00	Imports	Diageo
53	8382012418	Guinness Nitro IPA 6/11C	0.000	\$0.00	\$0.00	Imports	
54	8066095401	Coronita Extra 6/7B	0.000	\$0.00	\$0.00	Imports	Crown Imports LLC
55	88715100195	Coney Island Overpass IPA 6/12B	0.000	\$0.00	\$0.00	Micro	Boston Beer
56	8769200149	Angry Orchard Green Apple 6/12B	0.000	\$0.00	\$0.00	Cider	Boston Beer
57	4182700712	Harpoon IPA 12/12B	0.000	\$0.00	\$0.00	Micro	Harpoon
58	1820021979	Budweiser 8/16AL	0.000	\$0.00	\$0.00	Premium	Anheuser-Busch InBev
59	8382010403	Guinness Draught 12/11B	0.000	\$0.00	\$0.00	Imports	Diageo
60	8382012368	Guinness Draught 8/15C	0.000	\$0.00	\$0.00	Imports	Diageo
61	3061300071	Brooklyn Variety Pack 12/12B	0.000	\$0.00	\$0.00	Micro	Micro Breweries
62	8834510005	Newcastle Brown Ale 6/12B	0.000	\$0.00	\$0.00	Imports	Heineken USA
63	8248812345	Becks 6/12B	0.000	\$0.00	\$0.00	Imports	Anheuser-Busch InBev

**UNALLOCATED ITEMS/OPTIONAL ITEMS**

9110.psa

**UNALLOCATED SKU REPORT**

	<b>UPC</b>	<b>NAME</b>	<b>MVMT</b>	<b>Profit</b>	<b>Sales</b>	<b>Category</b>	<b>Manufacturer</b>
64	1820023984	Oculto 6/12B	0.000	\$0.00	\$0.00	Micro	Anheuser-Busch InBev
65	8378333100	Sierra Nevada Torpedo Extra IPA 6/12B	0.000	\$0.00	\$0.00	Micro	Sierra Nevada
66	7289000188	Heineken Premium Light 12/12C	0.000	\$0.00	\$0.00	Imports	Heineken USA
67	8769259102	Samuel Adams Latitude 48 IPA 6/12B	0.000	\$0.00	\$0.00	Micro	Boston Beer
68	1820013986	Shock Top Belgian White Ale 6/12B	0.000	\$0.00	\$0.00	Specialty	Anheuser-Busch InBev
69	3410031602	Milwaukee's Best 12/12C	0.000	\$0.00	\$0.00	Sub Premium	MillerCoors
70	79837312125	Magic Hat Variety Pack 12/12B	0.000	\$0.00	\$0.00	Micro	North American Breweri...
71	7199048004	Keystone Light 12/12C	0.000	\$0.00	\$0.00	Sub Premium	MillerCoors
72	68715190007	Southampton Double White Ale 6/12B	0.000	\$0.00	\$0.00	Micro	Micro Breweries
73	7199047712	Keystone Ice 1/24C	0.000	\$0.00	\$0.00	Sub Premium	MillerCoors
74	8769200079	Angry Orchard Seasonal 6/12B	0.000	\$0.00	\$0.00	Cider	Boston Beer
75	1820017991	Shock Top Sampler 12/12B	0.000	\$0.00	\$0.00	Specialty	Anheuser-Busch InBev
76	1820024001	Stella Artois Cidre 6/12B	0.000	\$0.00	\$0.00	Cider	Anheuser-Busch InBev
77	64286020024	Founders All Day IPA 6/12B	0.000	\$0.00	\$0.00	Micro	Micro Breweries
78	3410000323	Redd's Wicked Apple 1/24C	0.000	\$0.00	\$0.00	Specialty	MillerCoors
79	4257205715	Clausthaler NA 6/12B	0.000	\$0.00	\$0.00	Non Alcohol	Import
80	68174511130	Blue Point Blueberry Ale 6/12B	0.000	\$0.00	\$0.00	Micro	Anheuser-Busch InBev
81	7289000478	Heineken 1/22B	0.000	\$0.00	\$0.00	Imports	Heineken USA
82	8992495432	Yuengling Black & Tan 6/12B	0.000	\$0.00	\$0.00	Premium	DG Yuengling & Sons
83	1497450009	Woodchuck Amber 6/12B	0.000	\$0.00	\$0.00	Cider	Vermont Hard Cider Co...
84	2210000004	Pabst 1/24C	0.000	\$0.00	\$0.00	Sub Premium	Pabst
85	85909300244	SixPoint The Crisp 6/12C	0.000	\$0.00	\$0.00	Micro	Micro Breweries
86	8992423040	Yuengling Light Lager 12/12B	0.000	\$0.00	\$0.00	Premium	DG Yuengling & Sons
87	8248812700	Becks NA 6/12B	0.000	\$0.00	\$0.00	Non Alcohol	Anheuser-Busch InBev
88	8857333101	Shiner Bock 6/12B	0.000	\$0.00	\$0.00	Micro	Gambrinus
89	7199009554	Blue Moon Brewmaster's Sampler 12/1...	0.000	\$0.00	\$0.00	Specialty	MillerCoors
90	1820011985	Redbridge Lager 6/12B	0.000	\$0.00	\$0.00	Specialty	Anheuser-Busch InBev
91	1820000106	Bud Light 6/12C	0.000	\$0.00	\$0.00	Premium	Anheuser-Busch InBev
92	8992427896	Yuengling Traditional Lager 12/12B	0.000	\$0.00	\$0.00	Premium	DG Yuengling & Sons
93	88715100213	Coney Island Hard Root Beer 6/12B	0.000	\$0.00	\$0.00	Micro	Boston Beer
94	4182700076	Harpoon IPA 6/12B	0.000	\$0.00	\$0.00	Micro	Harpoon
95	78624311990	Flying Dog Raging Btch Belgn Ale 6/12B	0.000	\$0.00	\$0.00	Micro	Micro Breweries
96	8200072385	Smirnoff Ice 6/11B	0.000	\$0.00	\$0.00	FMB	Diageo
97	63625177612	Stone IPA 6/12B	0.000	\$0.00	\$0.00	Micro	Micro Breweries
98	64286090024	Founders All Day IPA 15/12C	0.000	\$0.00	\$0.00	Micro	Micro Breweries
99	7231123012	Dos Equis Lager 12/12B	0.000	\$0.00	\$0.00	Imports	Heineken USA
100	7248002403	Schaefer 12/12C	0.000	\$0.00	\$0.00	Sub Premium	Pabst
101	7143934450	Rolling Rock 12/12C	0.000	\$0.00	\$0.00	Sub Premium	Anheuser-Busch InBev
102	7289010016	Amstel Light 12/12B	0.000	\$0.00	\$0.00	Imports	Heineken USA
103	8769200033	Angry Orchard Crisp Apple 12/12B	0.000	\$0.00	\$0.00	Cider	Boston Beer
104	3410008722	Redd's Apple Ale 12/12B	0.000	\$0.00	\$0.00	Specialty	MillerCoors
105	85909300242	SixPoint Sweet Action 6/12C	0.000	\$0.00	\$0.00	Micro	Micro Breweries
106	7199076400	George Killian's Irish Red 12/12B	0.000	\$0.00	\$0.00	Specialty	MillerCoors
107	86273700000	Montauk Driftwood Ale 6/12C	0.000	\$0.00	\$0.00	Micro	Micro Breweries
108	1820018993	Bud Light Platinum 6/12B	0.000	\$0.00	\$0.00	Specialty	Anheuser-Busch InBev
109	1820014991	Bud Light Lime 6/12B	0.000	\$0.00	\$0.00	Specialty	Anheuser-Busch InBev
110	7199000008	Coors Light 6/12C	0.000	\$0.00	\$0.00	Premium	MillerCoors
111	1820016989	Shock Top Raspberry Wheat 6/12B	0.000	\$0.00	\$0.00	Specialty	Anheuser-Busch InBev
112	3410057505	Miller Lite 6/12B	0.000	\$0.00	\$0.00	Premium	MillerCoors
113	8769200109	Samuel Adams Seasonal 12/12C	0.000	\$0.00	\$0.00	Micro	Boston Beer
114	3410008755	Redd's Wicked Black Cherry 12/10C	0.000	\$0.00	\$0.00	Specialty	MillerCoors
115	8769230030	Samuel Adams Boston Ale 6/12B	0.000	\$0.00	\$0.00	Micro	Boston Beer
116	9200002013	Small Town Not Your Fathers Gngr 6/1...	0.000	\$0.00	\$0.00	Micro	Pabst
117	1820021998	Shock Top Honeycrisp Apple Wheat 6/...	0.000	\$0.00	\$0.00	Specialty	Anheuser-Busch InBev
118	86273700001	Montauk Summer Ale 6/12C	0.000	\$0.00	\$0.00	Micro	Micro Breweries
119	7289010011	Amstel Light 6/12B	0.000	\$0.00	\$0.00	Imports	Heineken USA
120	68174511112	Blue Point Toasted Lager 6/12B	0.000	\$0.00	\$0.00	Micro	Anheuser-Busch InBev
121	79837312602	Magic Hat #9 6/12B	0.000	\$0.00	\$0.00	Micro	North American Breweri...
122	7199009561	Blue Moon White IPA 6/12B	0.000	\$0.00	\$0.00	Specialty	MillerCoors
123	1820012998	Land Shark Lager 12/12B	0.000	\$0.00	\$0.00	Specialty	Anheuser-Busch InBev
124	3410057023	Miller Lite 9/16AL	0.000	\$0.00	\$0.00	Premium	MillerCoors
125	8382012360	Guinness Draught 4/15C	0.000	\$0.00	\$0.00	Imports	Diageo
126	8378316000	Sierra Nevada 4 Way IPA Vrtly Pck 12/...	0.000	\$0.00	\$0.00	Micro	Sierra Nevada

**UNALLOCATED ITEMS/OPTIONAL ITEMS**

9110.psa

**UNALLOCATED SKU REPORT**

	<b>UPC</b>	<b>NAME</b>	<b>MVMT</b>	<b>Profit</b>	<b>Sales</b>	<b>Category</b>	<b>Manufacturer</b>
127	86273700003	Montauk Session IPA 6/12C	0.000	\$0.00	\$0.00	Micro	Micro Breweries
128	1820012982	Land Shark Lager 6/12B	0.000	\$0.00	\$0.00	Specialty	Anheuser-Busch InBev
129	7199070002	George Killian's Irish Red 6/12B	0.000	\$0.00	\$0.00	Specialty	MillerCoors
130	7089701331	Fosters Lager 1/25C	0.000	\$0.00	\$0.00	Imports	MillerCoors
131	72383000020	Lagunitas A Little Sumpin Sumpin 6/12B	0.000	\$0.00	\$0.00	Micro	Micro Breweries
132	64286020007	Founders Dirty Bastard 6/12B	0.000	\$0.00	\$0.00	Micro	Micro Breweries
133	8378322812	Sierra Nevada Seasonal 12/12B	0.000	\$0.00	\$0.00	Micro	Sierra Nevada
134	8066095695	Corona Extra 12/12C	0.000	\$0.00	\$0.00	Imports	Crown Imports LLC
135	70277008101	Omission Lager 6/12B	0.000	\$0.00	\$0.00	Micro	Anheuser-Busch InBev
136	8769200004	Samuel Adams Seasonal Select 6/12B	0.000	\$0.00	\$0.00	Micro	Boston Beer
137	3410008730	Redd's Strawberry Ale 6/12B	0.000	\$0.00	\$0.00	Specialty	MillerCoors
138	8769210012	Samuel Adams Boston Lgr 6/12B	0.000	\$0.00	\$0.00	Micro	Boston Beer
139	78615000036	Hoegaarden 6/11B	0.000	\$0.00	\$0.00	Imports	Anheuser-Busch InBev
140	3410051607	Leinenkugel Seasonal Shandy 12/12B	0.000	\$0.00	\$0.00	Specialty	MillerCoors
141	8769200269	Samuel Adams Rebel Rouser 6/12B	0.000	\$0.00	\$0.00	Micro	Boston Beer
142	4182700146	Harpoon Seasonal 6/12B	0.000	\$0.00	\$0.00	Micro	Harpoon
143	3061300053	Brooklyn Seasonal 6/12B	0.000	\$0.00	\$0.00	Micro	Micro Breweries
144	8769275102	Twisted Tea Half & Half 6/12B	0.000	\$0.00	\$0.00	FMB	Boston Beer
145	7231163012	Dos Equis Lager 6/12B	0.000	\$0.00	\$0.00	Imports	Heineken USA
146	1820079047	O'Doul's 12/12C	0.000	\$0.00	\$0.00	Non Alcohol	Anheuser-Busch InBev
147	8797502650	Sapporo Draft 1/22C	0.000	\$0.00	\$0.00	Imports	Import
148	7231163011	Dos Equis Ambar 6/12B	0.000	\$0.00	\$0.00	Imports	Heineken USA
149	8769200255	Angry Orchard Hop N Mad 6/12B	0.000	\$0.00	\$0.00	Cider	Boston Beer
150	7289000158	Heineken Premium Light 6/12B	0.000	\$0.00	\$0.00	Imports	Heineken USA
151	8769229103	Samuel Adams Ssnl Variety-Mix Pk 12/...	0.000	\$0.00	\$0.00	Micro	Boston Beer
152	7289000174	Heineken 1/169MBR	0.000	\$0.00	\$0.00	Imports	Heineken USA
153	8382023473	Harp Lager 6/12B	0.000	\$0.00	\$0.00	Imports	Diageo
154	8378322822	Sierra Nevada Seasonal 6/12B	0.000	\$0.00	\$0.00	Micro	Sierra Nevada
155	8382007152	Smithwicks Irish Ale 6/12B	0.000	\$0.00	\$0.00	Imports	Diageo
156	3410008746	Redd's Green Apple 6/12B	0.000	\$0.00	\$0.00	Specialty	MillerCoors
157	8769200129	Samuel Adams Rebel IPA 12/12B	0.000	\$0.00	\$0.00	Micro	Boston Beer
158	8769284102	Angry Orchard Apple Ginger 6/12B	0.000	\$0.00	\$0.00	Cider	Boston Beer
159	1820006991	Michelob Ultra 12/12C SC	0.000	\$0.00	\$0.00	Specialty	Anheuser-Busch InBev
160	7289000020	Heineken 12/12C	0.000	\$0.00	\$0.00	Imports	Heineken USA
161	8382056793	Red Stripe 6/12B	0.000	\$0.00	\$0.00	Imports	Diageo
162	1820000784	O'Doul's 6/12B	0.000	\$0.00	\$0.00	Non Alcohol	Anheuser-Busch InBev
163	8378337512	Sierra Nevada Pale Ale 12/12B	0.000	\$0.00	\$0.00	Micro	Sierra Nevada
164	8382012393	Guinness Extra Stout 6/11B	0.000	\$0.00	\$0.00	Imports	Diageo
165	7089718331	Fosters Premium Ale 1/25C	0.000	\$0.00	\$0.00	Imports	MillerCoors
166	78615000001	Stella Artois 6/11B	0.000	\$0.00	\$0.00	Imports	Anheuser-Busch InBev
167	8769227102	Samuel Adams Cherry Wht 6/12B	0.000	\$0.00	\$0.00	Micro	Boston Beer
168	7231133140	Dos Equis Ambar 12/12B	0.000	\$0.00	\$0.00	Imports	Heineken USA
169	63598525945	Mikes HARDER Lemonade 12/8C	0.000	\$0.00	\$0.00	FMB	Mark Anthony Brands
170	1820002992	O'Doul's Amber 6/12B	0.000	\$0.00	\$0.00	Non Alcohol	Anheuser-Busch InBev
171	8992427891	Yuengling Traditional Lager 6/12B	0.000	\$0.00	\$0.00	Premium	DG Yuengling & Sons
172	7143934806	Rolling Rock 6/12B	0.000	\$0.00	\$0.00	Sub Premium	Anheuser-Busch InBev
173	7199030078	Coors Light 18/12B	0.000	\$0.00	\$0.00	Premium	MillerCoors
174	1820000833	Bud Light 6/12B	0.000	\$0.00	\$0.00	Premium	Anheuser-Busch InBev
175	1820096721	Michelob Ultra 18/12C SC	0.000	\$0.00	\$0.00	Specialty	Anheuser-Busch InBev
176	8992420111	Yuengling Light Lager 6/12B	0.000	\$0.00	\$0.00	Premium	DG Yuengling & Sons
177	9200002000	Small Town Not Your Fathers RtBr 6/1...	0.000	\$0.00	\$0.00	Micro	Pabst
178	85909300243	SixPoint Bengali 6/12C	0.000	\$0.00	\$0.00	Micro	Micro Breweries
179	1820025001	Bud Light 1/25C	0.000	\$0.00	\$0.00	Premium	Anheuser-Busch InBev
180	3410008813	Miller Fortune 12/12B	0.000	\$0.00	\$0.00	Specialty	MillerCoors
181	3061300001	Brooklyn Lager 6/12B	0.000	\$0.00	\$0.00	Micro	Micro Breweries
182	1820000834	Budweiser 6/12B	0.000	\$0.00	\$0.00	Premium	Anheuser-Busch InBev
183	85114800500	Great South Bay Blood Orange 6/12B	0.000	\$0.00	\$0.00	Micro	Micro Breweries
184	83972800411	Big Flats Lager Beer 6/12C	0.000	\$0.00	\$0.00	Sub Premium	Micro Breweries
185	1820022988	Bud Light Lime Raz-Ber-Rita 12/8C	0.000	\$0.00	\$0.00	FMB	Anheuser-Busch InBev
186	3410008716	Redd's Apple Ale 6/12B	0.000	\$0.00	\$0.00	Specialty	MillerCoors
187	1820021991	Stella Artois Cidre 4/12B	0.000	\$0.00	\$0.00	Cider	Anheuser-Busch InBev
188	8378337521	Sierra Nevada Pale Ale 6/12B	0.000	\$0.00	\$0.00	Micro	Sierra Nevada
189	8992429386	Yuengling Black & Tan 12/12B	0.000	\$0.00	\$0.00	Premium	DG Yuengling & Sons

UNALLOCATED ITEMS/OPTIONAL ITEMS

9110.psa

UNALLOCATED SKU REPORT

	UPC	NAME	MVMT	Profit	Sales	Category	Manufacturer
190	8769200127	Samuel Adams Rebel IPA 6/12B	0.000	\$0.00	\$0.00	Micro	Boston Beer