

0 12 24 36 48 60 72 84 96 108

60

48

36

24

12

0

60

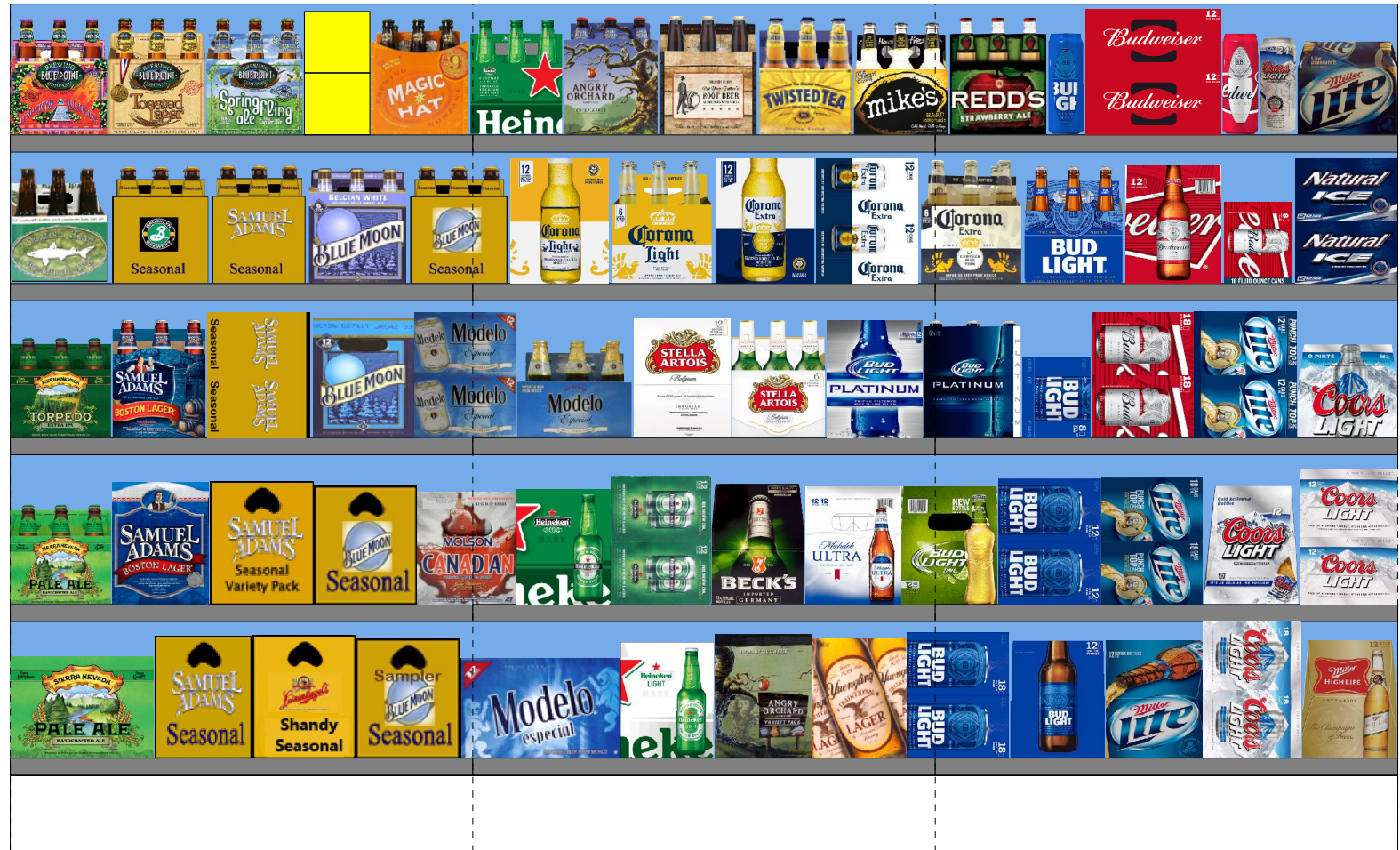
48

36

24

12

0



0 12 24 36 48 60 72 84 96 108



SCHEMATIC BACKING REPORT

Warm10751.psa

Planogram: Warm10751.psa

Segment #1 : Shelf #5 DEPTH: 22 in WIDTH: 36 in DISTANCE FROM TOP OF BASE SHELF TO BOTTOM OF SHELF: 6.00 in

POS	# FAC	UPC	ID	NAME	CASES	CAPACITY	UNITS HIGH	DOS	MVMT
21	1	8378337512	8378337512	Sierra Nevada Pale Ale 12/12B	1.0	2	1	7.3	1.9
22	1	8769201103	8769201103	Samuel Adams Seasonal 12/12B	1.0	2	1	26.0	0.5
23	1	3410051607	3410051607	Leinenkugel Seasonal Shandy 12/12B	1.0	2	1	14.0	1.0
24	1	7199009554	7199009554	Blue Moon Brewmaster's Sampler 12/12B	1.0	2	1	58.8	0.2

Segment #1 : Shelf #4 DEPTH: 22 in WIDTH: 36 in DISTANCE FROM TOP OF BASE SHELF TO BOTTOM OF SHELF: 17.93 in

POS	# FAC	UPC	ID	NAME	CASES	CAPACITY	UNITS HIGH	DOS	MVMT
16	1	8378337521	8378337521	Sierra Nevada Pale Ale 6/12B	1.0	4	1	36.4	0.8
17	1	8769210014	8769210014	Samuel Adams Boston Lgr 12/12B	1.0	2	1	39.4	0.4
18	1	8769229103	8769229103	Samuel Adams Ssnl Variety-Mix Pk 12/12B	1.0	2	1	15.2	0.9
19	1	7199009536	7199009536	Blue Moon Seasonal 12/12B	1.0	2	1	6.9	2.0
20	1	6821303117	6821303117	Molson Canadian 12/12B	1.0	2	1	13.0	1.1

Segment #1 : Shelf #3 DEPTH: 22 in WIDTH: 36 in DISTANCE FROM TOP OF BASE SHELF TO BOTTOM OF SHELF: 30.93 in

POS	# FAC	UPC	ID	NAME	CASES	CAPACITY	UNITS HIGH	DOS	MVMT
11	1	8378333100	8378333100	Sierra Nevada Torpedo Extra IPA 6/12B	1.0	4	1	9.8	2.8
12	1	8769210012	8769210012	Samuel Adams Boston Lgr 6/12B	1.0	4	1	26.0	1.1
13	1	8769200109	8769200109	Samuel Adams Seasonal 12/12C	2.0	4	2	60.5	0.5
14	1	7199009516	7199009516	Blue Moon Belgian White Ale 12/12B	1.0	2	1	12.1	1.2
15	1	8066095715	8066095715	Modelo 12/12C	2.0	4	2	0.0	0.0

Segment #1 : Shelf #2 DEPTH: 22 in WIDTH: 36 in DISTANCE FROM TOP OF BASE SHELF TO BOTTOM OF SHELF: 42.93 in

POS	# FAC	UPC	ID	NAME	CASES	CAPACITY	UNITS HIGH	DOS	MVMT
6	1	63848900029	63848900029	Dogfish Head 60 Minute IPA 6/12B	1.0	4	1	48.1	0.6
7	1	3061300053	3061300053	Brooklyn Seasonal 6/12B	1.0	4	1	60.6	0.5
8	1	8769230050	8769230050	Samuel Adams Seasonal 6/12B	1.0	4	1	15.0	1.9
9	1	7199009511	7199009511	Blue Moon Belgian White Ale 6/12B	1.0	4	1	0.0	0.0
10	1	7199009532	7199009532	Blue Moon Seasonal 6/12B	1.0	4	1	651.2	0.0

Segment #1 : Shelf #1 DEPTH: 22 in WIDTH: 36 in DISTANCE FROM TOP OF BASE SHELF TO BOTTOM OF SHELF: 54.50 in

POS	# FAC	UPC	ID	NAME	CASES	CAPACITY	UNITS HIGH	DOS	MVMT
1	1	68174511102	68174511102	Blue Point Hoptical Illusion 6/12B	1.0	4	1	49.6	0.6
2	1	68174511112	68174511112	Blue Point Toasted Lager 6/12B	1.0	4	1	134.0	0.2
3	1	68174511118	68174511118	Blue Point Seasonal 6/12B	1.0	4	1	21.4	1.3
4	1	86273700003	86273700003	Montauk Session IPA 6/12C	1.0	4	2	0.0	0.0
5	1	79837312602	79837312602	Magic Hat #9 6/12B	1.0	4	1	80.9	0.3

Segment #2 : Shelf #5 DEPTH: 22 in WIDTH: 36 in DISTANCE FROM TOP OF BASE SHELF TO BOTTOM OF SHELF: 6.00 in

POS	# FAC	UPC	ID	NAME	CASES	CAPACITY	UNITS HIGH	DOS	MVMT
42	1	8066095757	8066095757	Modelo 12/12B	1.0	2	1	0.0	0.0
43	1	7289000159	7289000159	Heineken Premium Light 12/12B	1.0	2	1	2.3	6.2
44	1	8769200017	8769200017	Angry Orchard Variety Pack 12/12B	1.0	2	1	12.1	1.2
45	1	8992427896	8992427896	Yuengling Traditional Lager 12/12B	1.0	2	1	31.5	0.4

Segment #2 : Shelf #4 DEPTH: 22 in WIDTH: 36 in DISTANCE FROM TOP OF BASE SHELF TO BOTTOM OF SHELF: 17.93 in

POS	# FAC	UPC	ID	NAME	CASES	CAPACITY	UNITS HIGH	DOS	MVMT
-----	-------	-----	----	------	-------	----------	------------	-----	------

SCHEMATIC BACKING REPORT

Warm10751.psa

POS	# FAC	UPC	ID	NAME	CASES	CAPACITY	UNITS HIGH	DOS	MVMT
38	1	7289000016	7289000016	Heineken 12/12B	1.0	2	1	1.7	8.1
39	1	7289000020	7289000020	Heineken 12/12C	2.0	4	2	0.0	0.0
40	1	8248812300	8248812300	Becks 12/12B	1.0	2	1	4.0	3.5
41	1	1820005990	1820005990	Michelob Ultra 12/12B	1.0	2	1	10.1	1.4

Segment #2 : Shelf #3 DEPTH: 22 in WIDTH: 36 in DISTANCE FROM TOP OF BASE SHELF TO BOTTOM OF SHELF: 30.93 in

POS	# FAC	UPC	ID	NAME	CASES	CAPACITY	UNITS HIGH	DOS	MVMT
34	1	8066095765	8066095765	Modelo 6/12B	0.8	3	1	0.0	0.0
35	1	78615000014	78615000014	Stella Artois 12/11B	1.0	2	1	4.4	3.2
36	1	78615000001	78615000001	Stella Artois 6/11B	1.0	4	1	0.0	0.0
37	1	1820018992	1820018992	Bud Light Platinum 12/12B	1.0	2	1	736.8	0.0

Segment #2 : Shelf #2 DEPTH: 22 in WIDTH: 36 in DISTANCE FROM TOP OF BASE SHELF TO BOTTOM OF SHELF: 42.93 in

POS	# FAC	UPC	ID	NAME	CASES	CAPACITY	UNITS HIGH	DOS	MVMT
30	1	8066095675	8066095675	Corona Light 12/12B	1.0	2	1	2.8	4.9
31	1	8066095625	8066095625	Corona Light 6/12B	1.0	4	1	0.0	0.0
32	1	8066095615	8066095615	Corona Extra 12/12B	1.0	2	1	4.9	2.8
33	1	8066095695	8066095695	Corona Extra 12/12C	2.0	4	2	72.7	0.4

Segment #2 : Shelf #1 DEPTH: 22 in WIDTH: 36 in DISTANCE FROM TOP OF BASE SHELF TO BOTTOM OF SHELF: 54.50 in

POS	# FAC	UPC	ID	NAME	CASES	CAPACITY	UNITS HIGH	DOS	MVMT
25	1	7289000011	7289000011	Heineken 6/12B	1.0	4	1	22.7	1.2
26	1	8769282102	8769282102	Angry Orchard Crisp Apple 6/12B	1.0	4	1	26.0	1.1
27	1	9200002000	9200002000	Small Town Not Your Fathers RtBr 6/12B	1.0	4	1	0.0	0.0
28	1	8769283102	8769283102	Twisted Tea 6/12B	1.0	4	1	28.0	1.0
29	1	63598510062	63598510062	Mikes Hard Lemonade 6/11B	1.0	4	1	48.0	0.6

Segment #3 : Shelf #5 DEPTH: 22 in WIDTH: 36 in DISTANCE FROM TOP OF BASE SHELF TO BOTTOM OF SHELF: 6.00 in

POS	# FAC	UPC	ID	NAME	CASES	CAPACITY	UNITS HIGH	DOS	MVMT
67	1	1820053218	1820053218	Bud Light 18/12C	2.0	2	2	1.7	8.0
68	1	1820000769	1820000769	Bud Light 12/12B	1.0	2	1	388.9	0.0
69	1	3410057509	3410057509	Miller Lite 12/12B	1.0	2	1	4.9	2.8
70	1	7199030017	7199030017	Coors Light 18/12C	2.0	2	2	1.2	11.4
71	1	3410001509	3410001509	Miller High Life 12/12B	1.0	2	1	2.0	7.0

Segment #3 : Shelf #4 DEPTH: 22 in WIDTH: 36 in DISTANCE FROM TOP OF BASE SHELF TO BOTTOM OF SHELF: 17.93 in

POS	# FAC	UPC	ID	NAME	CASES	CAPACITY	UNITS HIGH	DOS	MVMT
62	1	1820014990	1820014990	Bud Light Lime 12/12B	1.0	2	1	8.7	1.6
63	1	1820053047	1820053047	Bud Light 12/12C	2.0	4	2	2.9	9.8
64	1	3410057340	3410057340	Miller Lite 18/12C	2.0	2	2	1.2	11.4
65	1	7199030069	7199030069	Coors Light 12/12B	1.0	2	1	0.0	0.0
66	1	7199000048	7199000048	Coors Light 12/12C	2.0	4	2	5.1	5.4

Segment #3 : Shelf #3 DEPTH: 22 in WIDTH: 36 in DISTANCE FROM TOP OF BASE SHELF TO BOTTOM OF SHELF: 30.93 in

POS	# FAC	UPC	ID	NAME	CASES	CAPACITY	UNITS HIGH	DOS	MVMT
57	1	1820018993	1820018993	Bud Light Platinum 6/12B	1.0	4	1	0.0	0.0
58	1	1820008989	1820008989	Bud Light 8/16C	0.7	2	1	0.0	0.0
59	1	1820011218	1820011218	Budweiser 18/12C	2.0	2	2	2.5	5.6
60	1	3410057636	3410057636	Miller Lite 12/12C	2.0	4	2	12.1	2.3
61	1	7199030104	7199030104	Coors Light 9/16AL	1.0	2	1	0.0	0.0

Segment #3 : Shelf #2 DEPTH: 22 in WIDTH: 36 in DISTANCE FROM TOP OF BASE SHELF TO BOTTOM OF SHELF: 42.93 in

SCHEMATIC BACKING REPORT

Warm10751.psa

POS	# FAC	UPC	ID	NAME	CASES	CAPACITY	UNITS HIGH	DOS	MVMT
52	1	8066095605	8066095605	Corona Extra 6/12B	1.0	4	1	0.0	0.0
53	1	1820000833	1820000833	Bud Light 6/12B	1.0	4	1	0.0	0.0
54	1	1820000771	1820000771	Budweiser 12/12B	1.0	2	1	1555.6	0.0
55	1	1820008981	1820008981	Budweiser 8/16C	0.7	2	1	0.0	0.0
56	1	1820000964	1820000964	Natural Ice 12/12C	2.0	4	2	583.3	0.0

Segment #3 : Shelf #1 DEPTH: 22 in WIDTH: 36 in DISTANCE FROM TOP OF BASE SHELF TO BOTTOM OF SHELF: 54.50 in

POS	# FAC	UPC	ID	NAME	CASES	CAPACITY	UNITS HIGH	DOS	MVMT
46	1	3410008730	3410008730	Redd's Strawberry Ale 6/12B	1.0	4	1	90.9	0.3
47	1	1820021986	1820021986	Bud Light 3/25C	0.4	2	1	0.0	0.0
48	1	1820011047	1820011047	Budweiser 12/12C	2.5	5	2	5.6	6.3
49	1	1820021985	1820021985	Budweiser 3/25C	0.4	2	1	0.0	0.0
50	1	7199030120	7199030120	Coors Light 3/24C	0.4	2	1	0.0	0.0
51	1	3410057023	3410057023	Miller Lite 9/16AL	1.0	2	1	60.6	0.2

SKUs on Planogram: 71

UNALLOCATED ITEMS/OPTIONAL ITEMS

Warm10751.psa

UNALLOCATED SKU REPORT

	UPC	NAME	MVMT	Profit	Sales	Category	Manufacturer
1	8780000049	Smith & Forge Hard Cider 4/16C	0.308	\$0.00	\$0.00	Cider	MillerCoors
2	8769200004	Samuel Adams Seasonal Select 6/12B	0.231	\$0.00	\$0.00	Micro	Boston Beer
3	3410008716	Redd's Apple Ale 6/12B	0.190	\$0.00	\$0.00	Specialty	MillerCoors
4	63598560611	Mikes Hard Cranberry Lemonade 6/11B	0.173	\$0.00	\$0.00	FMB	Mark Anthony Brands
5	8992423040	Yuengling Light Lager 12/12B	0.154	\$0.00	\$0.00	Premium	DG Yuengling & Sons
6	63598525945	Mikes HARDER Lemonade 12/8C	0.154	\$0.00	\$0.00	FMB	Mark Anthony Brands
7	63598506744	Mikes Hard Black Cherry Lemonade 6/...	0.124	\$0.00	\$0.00	FMB	Mark Anthony Brands
8	3061300001	Brooklyn Lager 6/12B	0.123	\$0.00	\$0.00	Micro	Micro Breweries
9	81760601000	Captain Lawrence Pale Ale 6/12B	0.091	\$0.00	\$0.00	Micro	Micro Breweries
10	3410051605	Leinenkugel Seasonal Shandy 6/12B	0.085	\$0.00	\$0.00	Specialty	MillerCoors
11	3410058805	Leinenkugel Heritage Seasonal 6/12B	0.085	\$0.00	\$0.00	Specialty	MillerCoors
12	1820017991	Shock Top Sampler 12/12B	0.077	\$0.00	\$0.00	Specialty	Anheuser-Busch InBev
13	73692011389	Goose Island Green Line PA 6/12B	0.077	\$0.00	\$0.00	Micro	Anheuser-Busch InBev
14	8834510158	Strongbow Honey Apple Cider 6/11B	0.077	\$0.00	\$0.00	Cider	Heineken USA
15	1497450009	Woodchuck Amber 6/12B	0.056	\$0.00	\$0.00	Cider	Vermont Hard Cider Co...
16	3410000340	Redd's Variety Pack 12/12B	0.049	\$0.00	\$0.00	Specialty	MillerCoors
17	8200072385	Smirnoff Ice 6/11B	0.046	\$0.00	\$0.00	FMB	Diageo
18	1820024001	Stella Artois Cidre 6/12B	0.044	\$0.00	\$0.00	Cider	Anheuser-Busch InBev
19	1820015047	Natural Light 12/12C	0.041	\$0.00	\$0.00	Sub Premium	Anheuser-Busch InBev
20	1820022992	Bud Light Lime-A-Rita Seasonal 12/8C	0.038	\$0.00	\$0.00	FMB	Anheuser-Busch InBev
21	63598525948	Mikes HARDER Blk Cherry Lemonade ...	0.038	\$0.00	\$0.00	FMB	Mark Anthony Brands
22	3410008813	Miller Fortune 12/12B	0.033	\$0.00	\$0.00	Specialty	MillerCoors
23	1820020998	Bud Light 8/16AL	0.030	\$0.00	\$0.00	Premium	Anheuser-Busch InBev
24	8200072754	Smirnoff Ice Raspberry 6/11B	0.027	\$0.00	\$0.00	FMB	Diageo
25	2210000170	Pabst 12/12C	0.023	\$0.00	\$0.00	Sub Premium	Pabst
26	8200075748	Smirnoff Ice Screwdriver 6/11B	0.021	\$0.00	\$0.00	FMB	Diageo
27	1820021979	Budweiser 8/16AL	0.011	\$0.00	\$0.00	Premium	Anheuser-Busch InBev
28	7167007106	Saranac Twelve Beers 12/12B	0.009	\$0.00	\$0.00	Micro	FX Matt
29	63598506074	Mikes Hard Seasonal 6/11B	0.000	\$0.00	\$0.00	FMB	Mark Anthony Brands
30	8834510151	Strongbow Gold Hard Cider 6/11B	0.000	\$0.00	\$0.00	Cider	Heineken USA
31	9425400015	Post Road Pumpkin Ale 6/12B	0.000	\$0.00	\$0.00	Micro	Micro Breweries
32	86273700001	Montauk Summer Ale 6/12C	0.000	\$0.00	\$0.00	Micro	Micro Breweries
33	7167084200	Saranac Adirondack Trail Mix 6/12B	0.000	\$0.00	\$0.00	Micro	FX Matt
34	85998900504	Greenport Harbor Harbor Ale 6/12B	0.000	\$0.00	\$0.00	Micro	Micro Breweries
35	8382023473	Harp Lager 6/12B	0.000	\$0.00	\$0.00	Imports	Diageo
36	1820000016	Budweiser 6/12C	0.000	\$0.00	\$0.00	Premium	Anheuser-Busch InBev
37	1820097007	Bud Light Lime Lemon-Ade-Rita 12/8C	0.000	\$0.00	\$0.00	FMB	Anheuser-Busch InBev
38	7289000000	Heineken 6/12C	0.000	\$0.00	\$0.00	Imports	Heineken USA
39	1820006991	Michelob Ultra 12/12C SC	0.000	\$0.00	\$0.00	Specialty	Anheuser-Busch InBev
40	73692011439	Goose Island India Pale Ale 4/16C	0.000	\$0.00	\$0.00	Micro	Anheuser-Busch InBev
41	7289010016	Amstel Light 12/12B	0.000	\$0.00	\$0.00	Imports	Heineken USA
42	8769200129	Samuel Adams Rebel IPA 12/12B	0.000	\$0.00	\$0.00	Micro	Boston Beer
43	88715100094	Coney Island Mermaid Pilsner 6/12B	0.000	\$0.00	\$0.00	Micro	Boston Beer
44	79837312606	Magic Hat Seasonal 6/12B	0.000	\$0.00	\$0.00	Micro	North American Brewer...
45	7143934450	Rolling Rock 12/12C	0.000	\$0.00	\$0.00	Sub Premium	Anheuser-Busch InBev
46	1820012998	Land Shark Lager 12/12B	0.000	\$0.00	\$0.00	Specialty	Anheuser-Busch InBev
47	8769259102	Samuel Adams Latitude 48 IPA 6/12B	0.000	\$0.00	\$0.00	Micro	Boston Beer
48	3410049805	Leinenkugel Sunset Wheat Ale 6/12B	0.000	\$0.00	\$0.00	Specialty	MillerCoors
49	8382010401	Guinness Draught 6/11B	0.000	\$0.00	\$0.00	Imports	Diageo
50	1820020993	Bud Light Lime Straw-Ber-Rita 12/8C	0.000	\$0.00	\$0.00	FMB	Anheuser-Busch InBev
51	68715190018	Southampton IPA 6/12B	0.000	\$0.00	\$0.00	Micro	Micro Breweries
52	7289000188	Heineken Premium Light 12/12C	0.000	\$0.00	\$0.00	Imports	Heineken USA
53	73692011139	Goose Island Seasonal Sampler 12/12B	0.000	\$0.00	\$0.00	Micro	Anheuser-Busch InBev
54	7231163012	Dos Equis Lager 6/12B	0.000	\$0.00	\$0.00	Imports	Heineken USA
55	1820079047	O'Doul's 12/12C	0.000	\$0.00	\$0.00	Non Alcohol	Anheuser-Busch InBev
56	8769200079	Angry Orchard Seasonal 6/12B	0.000	\$0.00	\$0.00	Cider	Boston Beer
57	88715100051	Traveler Seasonal Shandy 6/12B	0.000	\$0.00	\$0.00	Micro	Boston Beer
58	1820019987	Bud Light Lime-A-Rita 12/8C	0.000	\$0.00	\$0.00	FMB	Anheuser-Busch InBev
59	1820096721	Michelob Ultra 18/12C SC	0.000	\$0.00	\$0.00	Specialty	Anheuser-Busch InBev
60	78624311990	Flying Dog Raging Btch Belgn Ale 6/12B	0.000	\$0.00	\$0.00	Micro	Micro Breweries
61	8382010403	Guinness Draught 12/11B	0.000	\$0.00	\$0.00	Imports	Diageo
62	63598512998	Mikes Hard Variety Pack 12/11B	0.000	\$0.00	\$0.00	FMB	Mark Anthony Brands
63	8382012393	Guinness Extra Stout 6/11B	0.000	\$0.00	\$0.00	Imports	Diageo

UNALLOCATED ITEMS/OPTIONAL ITEMS

Warm10751.psa

UNALLOCATED SKU REPORT

	UPC	NAME	MVMT	Profit	Sales	Category	Manufacturer
64	68715190007	Southampton Double White Ale 6/12B	0.000	\$0.00	\$0.00	Micro	Micro Breweries
65	1820022988	Bud Light Lime Raz-Ber-Rita 12/8C	0.000	\$0.00	\$0.00	FMB	Anheuser-Busch InBev
66	76227407131	Bass Pale Ale 6/12B	0.000	\$0.00	\$0.00	Imports	Anheuser-Busch InBev
67	79603011493	Kona Castaway IPA 6/12B	0.000	\$0.00	\$0.00	Micro	Anheuser-Busch InBev
68	7199009584	Blue Moon Cinnamon Horchata Ale 6/1...	0.000	\$0.00	\$0.00	Specialty	MillerCoors
69	1820023984	Oculto 6/12B	0.000	\$0.00	\$0.00	Micro	Anheuser-Busch InBev
70	8769200033	Angry Orchard Crisp Apple 12/12B	0.000	\$0.00	\$0.00	Cider	Boston Beer
71	8378322812	Sierra Nevada Seasonal 12/12B	0.000	\$0.00	\$0.00	Micro	Sierra Nevada
72	8834510005	Newcastle Brown Ale 6/12B	0.000	\$0.00	\$0.00	Imports	Heineken USA
73	7199076400	George Killian's Irish Red 12/12B	0.000	\$0.00	\$0.00	Specialty	MillerCoors
74	85909300242	SixPoint Sweet Action 6/12C	0.000	\$0.00	\$0.00	Micro	Micro Breweries
75	63848900137	Dogfish Head Namaste 6/12B	0.000	\$0.00	\$0.00	Micro	Micro Breweries
76	85998900522	Greenport Harbor Seasonal 6/12B	0.000	\$0.00	\$0.00	Micro	Micro Breweries
77	3410008722	Redd's Apple Ale 12/12B	0.000	\$0.00	\$0.00	Specialty	MillerCoors
78	4182700012	Harpoon Mix Pack 12/12B	0.000	\$0.00	\$0.00	Micro	Harpoon
79	85909300244	SixPoint The Crisp 6/12C	0.000	\$0.00	\$0.00	Micro	Micro Breweries
80	1820011985	Redbridge Lager 6/12B	0.000	\$0.00	\$0.00	Specialty	Anheuser-Busch InBev
81	88715100213	Coney Island Hard Root Beer 6/12B	0.000	\$0.00	\$0.00	Micro	Boston Beer
82	1820014991	Bud Light Lime 6/12B	0.000	\$0.00	\$0.00	Specialty	Anheuser-Busch InBev
83	8382012360	Guinness Draught 4/15C	0.000	\$0.00	\$0.00	Imports	Diageo
84	70277008101	Omission Lager 6/12B	0.000	\$0.00	\$0.00	Micro	Anheuser-Busch InBev
85	7199030005	Coors Light 6/12B	0.000	\$0.00	\$0.00	Premium	MillerCoors
86	78615000036	Hoegaarden 6/11B	0.000	\$0.00	\$0.00	Imports	Anheuser-Busch InBev
87	3410001505	Miller High Life 6/12B	0.000	\$0.00	\$0.00	Sub Premium	MillerCoors
88	8857370002	Shiner Family Reunion Mix 6/12B	0.000	\$0.00	\$0.00	Micro	Gambrinus
89	85114800506	Great South Bay Seasonal 6/12B	0.000	\$0.00	\$0.00	Micro	Micro Breweries
90	63625177612	Stone IPA 6/12B	0.000	\$0.00	\$0.00	Micro	Micro Breweries
91	3410057505	Miller Lite 6/12B	0.000	\$0.00	\$0.00	Premium	MillerCoors
92	79837312125	Magic Hat Variety Pack 12/12B	0.000	\$0.00	\$0.00	Micro	North American Breweri...
93	4182700712	Harpoon IPA 12/12B	0.000	\$0.00	\$0.00	Micro	Harpoon
94	1820016989	Shock Top Raspberry Wheat 6/12B	0.000	\$0.00	\$0.00	Specialty	Anheuser-Busch InBev
95	8769200127	Samuel Adams Rebel IPA 6/12B	0.000	\$0.00	\$0.00	Micro	Boston Beer
96	8248812700	Becks NA 6/12B	0.000	\$0.00	\$0.00	Non Alcohol	Anheuser-Busch InBev
97	1820021998	Shock Top Honeycrisp Apple Wheat 6/...	0.000	\$0.00	\$0.00	Specialty	Anheuser-Busch InBev
98	7199000008	Coors Light 6/12C	0.000	\$0.00	\$0.00	Premium	MillerCoors
99	8382012368	Guinness Draught 8/15C	0.000	\$0.00	\$0.00	Imports	Diageo
100	64286090024	Founders All Day IPA 15/12C	0.000	\$0.00	\$0.00	Micro	Micro Breweries
101	3410031602	Milwaukee's Best 12/12C	0.000	\$0.00	\$0.00	Sub Premium	MillerCoors
102	76227407531	Bass Pale Ale 12/12B	0.000	\$0.00	\$0.00	Imports	Anheuser-Busch InBev
103	1820000031	Natural Light 6/12C	0.000	\$0.00	\$0.00	Sub Premium	Anheuser-Busch InBev
104	7248002403	Schaefer 12/12C	0.000	\$0.00	\$0.00	Sub Premium	Pabst
105	7231163011	Dos Equis Ambar 6/12B	0.000	\$0.00	\$0.00	Imports	Heineken USA
106	4182700146	Harpoon Seasonal 6/12B	0.000	\$0.00	\$0.00	Micro	Harpoon
107	4257205715	Clausthaler NA 6/12B	0.000	\$0.00	\$0.00	Non Alcohol	Import
108	7199009561	Blue Moon White IPA 6/12B	0.000	\$0.00	\$0.00	Specialty	MillerCoors
109	60940872979	Port Jeff Party Boat IPA 6/12C	0.000	\$0.00	\$0.00	Micro	Micro Breweries
110	7199017028	Coors 6/12B	0.000	\$0.00	\$0.00	Premium	MillerCoors
111	9200002013	Small Town Not Your Fathers Gngr 6/1...	0.000	\$0.00	\$0.00	Micro	Pabst
112	8066095401	Coronita Extra 6/7B	0.000	\$0.00	\$0.00	Imports	Crown Imports LLC
113	78036980012	Shipyard Seasonal Ale 6/12B	0.000	\$0.00	\$0.00	Micro	Micro Breweries
114	18195400002	Peroni Nastro Azzuro 6/12B	0.000	\$0.00	\$0.00	Imports	MillerCoors
115	8769275102	Twisted Tea Half & Half 6/12B	0.000	\$0.00	\$0.00	FMB	Boston Beer
116	1820022989	Bud Light Lime Mang-O-Rita 12/8C	0.000	\$0.00	\$0.00	FMB	Anheuser-Busch InBev
117	1820012982	Land Shark Lager 6/12B	0.000	\$0.00	\$0.00	Specialty	Anheuser-Busch InBev
118	3410008755	Redd's Wicked Black Cherry 12/10C	0.000	\$0.00	\$0.00	Specialty	MillerCoors
119	7289010011	Amstel Light 6/12B	0.000	\$0.00	\$0.00	Imports	Heineken USA
120	8992495432	Yuengling Black & Tan 6/12B	0.000	\$0.00	\$0.00	Premium	DG Yuengling & Sons
121	85909300243	SixPoint Bengali 6/12C	0.000	\$0.00	\$0.00	Micro	Micro Breweries
122	1820000106	Bud Light 6/12C	0.000	\$0.00	\$0.00	Premium	Anheuser-Busch InBev
123	8857333101	Shiner Bock 6/12B	0.000	\$0.00	\$0.00	Micro	Gambrinus
124	8992429386	Yuengling Black & Tan 12/12B	0.000	\$0.00	\$0.00	Premium	DG Yuengling & Sons
125	3410015509	Miller 64 12/12B	0.000	\$0.00	\$0.00	Premium	MillerCoors
126	64286020024	Founders All Day IPA 6/12B	0.000	\$0.00	\$0.00	Micro	Micro Breweries

UNALLOCATED ITEMS/OPTIONAL ITEMS

Warm10751.psa

UNALLOCATED SKU REPORT

	UPC	NAME	MVMT	Profit	Sales	Category	Manufacturer
127	86273700000	Montauk Driftwood Ale 6/12C	0.000	\$0.00	\$0.00	Micro	Micro Breweries
128	4182700076	Harpoon IPA 6/12B	0.000	\$0.00	\$0.00	Micro	Harpoon
129	9200002009	Small Town Not Your Fathers RtBr 6/1...	0.000	\$0.00	\$0.00	Micro	Pabst
130	7199070002	George Killian's Irish Red 6/12B	0.000	\$0.00	\$0.00	Specialty	MillerCoors
131	64286020007	Founders Dirty Bastard 6/12B	0.000	\$0.00	\$0.00	Micro	Micro Breweries
132	85114800500	Great South Bay Blood Orange 6/12B	0.000	\$0.00	\$0.00	Micro	Micro Breweries
133	3061300071	Brooklyn Variety Pack 12/12B	0.000	\$0.00	\$0.00	Micro	Micro Breweries
134	68174541116	Blue Point Toasted Lager 4/16C	0.000	\$0.00	\$0.00	Micro	Anheuser-Busch InBev
135	1820020994	Bud Light Platinum 12/12C SC	0.000	\$0.00	\$0.00	Specialty	Anheuser-Busch InBev
136	68174512252	Blue Point Mosaic Session IPA 4/16C	0.000	\$0.00	\$0.00	Micro	Anheuser-Busch InBev
137	68174521122	Blue Point Variety 12/12B	0.000	\$0.00	\$0.00	Micro	Anheuser-Busch InBev
138	1820005989	Michelob Ultra 6/12B	0.000	\$0.00	\$0.00	Specialty	Anheuser-Busch InBev
139	3410008810	Miller Fortune 6/12B	0.000	\$0.00	\$0.00	Specialty	MillerCoors
140	8769284102	Angry Orchard Apple Ginger 6/12B	0.000	\$0.00	\$0.00	Cider	Boston Beer
141	8378322822	Sierra Nevada Seasonal 6/12B	0.000	\$0.00	\$0.00	Micro	Sierra Nevada
142	1820000834	Budweiser 6/12B	0.000	\$0.00	\$0.00	Premium	Anheuser-Busch InBev
143	7143934806	Rolling Rock 6/12B	0.000	\$0.00	\$0.00	Sub Premium	Anheuser-Busch InBev
144	85998900516	Greenport Harbor Otherside IPA 6/12B	0.000	\$0.00	\$0.00	Micro	Micro Breweries
145	3410008746	Redd's Green Apple 6/12B	0.000	\$0.00	\$0.00	Specialty	MillerCoors
146	88715100195	Coney Island Overpass IPA 6/12B	0.000	\$0.00	\$0.00	Micro	Boston Beer
147	8769200255	Angry Orchard Hop N Mad 6/12B	0.000	\$0.00	\$0.00	Cider	Boston Beer
148	8382018132	Guinness Blonde 6/12B	0.000	\$0.00	\$0.00	Imports	Diageo
149	8769227102	Samuel Adams Cherry Wht 6/12B	0.000	\$0.00	\$0.00	Micro	Boston Beer
150	1820002992	O'Doul's Amber 6/12B	0.000	\$0.00	\$0.00	Non Alcohol	Anheuser-Busch InBev
151	7231133140	Dos Equis Ambar 12/12B	0.000	\$0.00	\$0.00	Imports	Heineken USA
152	7289000158	Heineken Premium Light 6/12B	0.000	\$0.00	\$0.00	Imports	Heineken USA
153	8200072751	Smirnoff Ice Green Apple 6/11B	0.000	\$0.00	\$0.00	FMB	Diageo
154	8382007152	Smithwicks Irish Ale 6/12B	0.000	\$0.00	\$0.00	Imports	Diageo
155	1820000784	O'Doul's 6/12B	0.000	\$0.00	\$0.00	Non Alcohol	Anheuser-Busch InBev
156	79837312123	Magic Hat #9 12/12B	0.000	\$0.00	\$0.00	Micro	North American Breweri...
157	3410008749	Redd's Wicked Mango 12/10C	0.000	\$0.00	\$0.00	Specialty	MillerCoors
158	8769200149	Angry Orchard Green Apple 6/12B	0.000	\$0.00	\$0.00	Cider	Boston Beer
159	8382012418	Guinness Nitro IPA 6/11C	0.000	\$0.00	\$0.00	Imports	
160	8382056793	Red Stripe 6/12B	0.000	\$0.00	\$0.00	Imports	Diageo
161	72383000009	Lagunitas IPA 6/12B	0.000	\$0.00	\$0.00	Micro	Micro Breweries
162	73692011118	Goose Island Seasonal 6/12B	0.000	\$0.00	\$0.00	Micro	Anheuser-Busch InBev
163	7231123012	Dos Equis Lager 12/12B	0.000	\$0.00	\$0.00	Imports	Heineken USA
164	1820013986	Shock Top Belgian White Ale 6/12B	0.000	\$0.00	\$0.00	Specialty	Anheuser-Busch InBev
165	72383000020	Lagunitas A Little Sumpin Sumpin 6/12B	0.000	\$0.00	\$0.00	Micro	Micro Breweries
166	1820019991	Shock Top Seasonal 12/12B	0.000	\$0.00	\$0.00	Specialty	Anheuser-Busch InBev
167	1820017993	Shock Top Seasonal 6/12B	0.000	\$0.00	\$0.00	Specialty	Anheuser-Busch InBev
168	1820015981	Shock Top Belgian White Ale 12/12B	0.000	\$0.00	\$0.00	Specialty	Anheuser-Busch InBev
169	8248812345	Becks 6/12B	0.000	\$0.00	\$0.00	Imports	Anheuser-Busch InBev
170	68174511130	Blue Point Blueberry Ale 6/12B	0.000	\$0.00	\$0.00	Micro	Anheuser-Busch InBev
171	8992427891	Yuengling Traditional Lager 6/12B	0.000	\$0.00	\$0.00	Premium	DG Yuengling & Sons
172	3061301136	Brooklyn East India Pale Ale 12/12C	0.000	\$0.00	\$0.00	Micro	Micro Breweries
173	63123430002	Sweetwater 420 Pale 6/12B	0.000	\$0.00	\$0.00	Micro	Micro Breweries