



CVS # 2433 WARM

Address: 2112 WHITE PLAINS RD | City: BRONX | State: NY

Chain/StoreNumer: CVS - EAST 2433

Reset Name: 2019 FALL

Planogram Name: 2433_4ft_WARM

Segment # 1 : 1_5 DEPTH: 23 in WIDTH: 48 in DISTANCE FROM TOP OF BASE SHELF TO BOTTOM OF SHELF:0.00 in

POS #	FAC	UPC	NAME	CASES	CAPACITY	UNITS HIGH	Category
1	1	3410057340	LITE 18/12 CAN	2.0	2	1	PREMIUM
2	1	7199030017	COORS LIGHT 18/12 CAN	3.0	3	1	PREMIUM
3	1	1820053218	BUD LIGHT 18/12 CAN	2.0	2	1	PREMIUM
4	1	1820011218	BUD 18/12 CAN	2.0	2	1	PREMIUM
5	1	3354495042	CORONA PREMIER 12/12 BTL	2.0	4	1	ABOVE PREMIUM
6	1	8066095615	CORONA 12/12 BTL	2.0	4	1	ABOVE PREMIUM
7	1	8066095695	CORONA 12/12 CAN	2.0	4	1	ABOVE PREMIUM
8	1	7289000016	HEINEKEN 12/12 BTL	2.0	4	1	ABOVE PREMIUM

Segment # 1 : 1_4 DEPTH: 23 in WIDTH: 48 in DISTANCE FROM TOP OF BASE SHELF TO BOTTOM OF SHELF:23.00 in

POS #	FAC	UPC	NAME	CASES	CAPACITY	UNITS HIGH	Category
1	1	3410057636	LITE 12/12 CAN	1.0	2	1	PREMIUM
2	1	7199000048	COORS LIGHT 12/12 CAN	1.5	3	1	PREMIUM
3	1	1820053047	BUD LIGHT 12/12 CAN	1.0	2	1	PREMIUM
4	1	1820011047	BUD 12/12 CAN	1.0	2	1	PREMIUM
5	1	8066095715	MODELO ESPECIAL 12/12 CAN	1.0	2	1	ABOVE PREMIUM
6	1	3354495053	CORONA FAMILIAR 12/12 BTL	1.0	2	1	ABOVE PREMIUM
7	1	8066095675	CORONA LIGHT 12/12 BTL	1.0	2	1	ABOVE PREMIUM
8	1	7289000011	HEINEKEN 6/12 BTL	1.0	4	1	ABOVE PREMIUM

Segment # 1 : 1_3 DEPTH: 23 in WIDTH: 48 in DISTANCE FROM TOP OF BASE SHELF TO BOTTOM OF SHELF:36.00 in

POS #	FAC	UPC	NAME	CASES	CAPACITY	UNITS HIGH	Category
1	1	63598554890	WHITE CLAW VARIETY PACK 12/12 CAN	1.5	3	1	ABOVE PREMIUM
2	1	3410001509	HIGH LIFE 12/12 BTL	1.5	3	1	ECONOMY
3	1	7199030005	COORS LIGHT 6/12 BTL	1.0	4	1	PREMIUM
4	1	1820000833	BUD LIGHT 6/12 BTL	1.0	4	1	PREMIUM
5	1	1820005990	MICHELOB ULTRA 12/12 BTL	1.0	2	1	ABOVE PREMIUM
6	1	78615000014	STELLA ARTOIS 12/11.2 BTL	1.0	2	1	ABOVE PREMIUM

Segment # 1 : 1_2 DEPTH: 23 in WIDTH: 48 in DISTANCE FROM TOP OF BASE SHELF TO BOTTOM OF SHELF:48.00 in

POS #	FAC	UPC	NAME	CASES	CAPACITY	UNITS HIGH	Category
1	1	8769282102	ANGRY ORCHARD CRISP APPLE 6/12 BTL	1.0	4	1	ABOVE PREMIUM
2	1	8769200149	ANGRY ORCHARD GREEN APPLE 6/12 BTL	1.0	4	1	ABOVE PREMIUM
3	1	8066095765	MODELO ESPECIAL 6/12 BTL	0.8	3	1	ABOVE PREMIUM
4	1	8066095625	CORONA LIGHT 6/12 BTL	1.0	4	1	ABOVE PREMIUM
5	1	8066095605	CORONA 6/12 BTL	1.0	4	1	ABOVE PREMIUM
6	1	18195400002	PERONI 6/11.2 BTL	1.0	4	1	ABOVE PREMIUM

Segment # 1 : 1_1 DEPTH: 23 in WIDTH: 48 in DISTANCE FROM TOP OF BASE SHELF TO BOTTOM OF SHELF:60.00 in

POS #	FAC	UPC	NAME	CASES	CAPACITY	UNITS HIGH	Category
1	1	3354400013	CORONA REFRESCA VARIETY 12/12 CAN	1.5	3	1	ABOVE PREMIUM
2	1	8769200686	TRULY VARIETY BERRY 12/12 CAN (SLEEK)	1.5	3	1	ABOVE PREMIUM
3	1	3410051681	CAPE LINE VARIETY PACK 12/12 CAN	1.5	3	1	ABOVE PREMIUM
4	1	3061300001	BROOKLYN LAGER 6/12 BTL	1.0	4	1	ABOVE PREMIUM
5	1	7199009511	BLUE MOON BELGIAN WHITE 6/12 BTL	1.0	4	1	ABOVE PREMIUM
6	1	8769210012	SAMUEL ADAMS BOSTON LAGER 6/12 BTL	1.0	4	1	ABOVE PREMIUM



CVS # 2433 WARM

Address: 2112 WHITE PLAINS RD | City: BRONX | State: NY

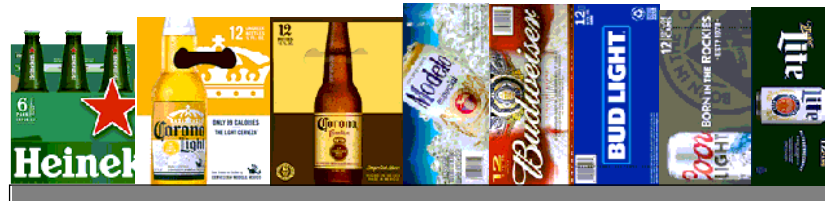
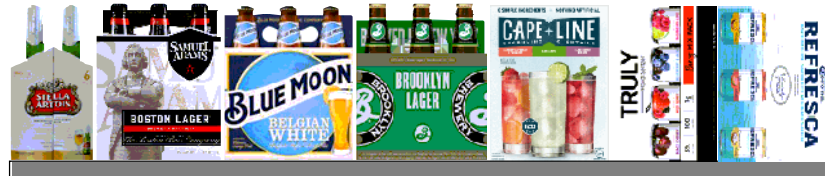
Chain/StoreNumber: CVS - EAST 2433

Reset Name: 2019 FALL

Planogram Name: 2433_4ft_WARM

7	1	7861500001	STELLA ARTOIS 6/11.2 BTL	0.8	3	1	ABOVE PREMIUM
---	---	------------	--------------------------	-----	---	---	---------------

REVERSE VIEW (ONLY IF NEEDED)





CVS # 2433 WARM

Reset Timing 2019 FALL

Address: 2112 WHITE PLAINS RD | City: BRONX | State: NY

REVERSE VIEW (ONLY IF NEEDED)

Segment:
1 of 1



Segment # 1 : 1_5 0.00 In

POS	UPC	NAME
1	3410057340	LITE 18/ 12 CAN
2	7199030017	COORS LIGHT 18/ 12 CAN
3	1820053218	BUD LIGHT 18/ 12 CAN
4	1820011218	BUD 18/ 12 CAN
5	3354495042	CORONA PREMIER 12/ 12 BTL
6	8066095615	CORONA 12/ 12 BTL
7	8066095695	CORONA 12/ 12 CAN
8	7289000016	HEINEKEN 12/ 12 BTL

Segment # 1 : 1_4 23.00 In

POS	UPC	NAME
1	3410057636	LITE 12/ 12 CAN
2	7199000048	COORS LIGHT 12/ 12 CAN
3	1820053047	BUD LIGHT 12/ 12 CAN
4	1820011047	BUD 12/ 12 CAN
5	8066095715	MODELO ESPECIAL 12/ 12 CAN
6	3354495053	CORONA FAMILIAR 12/ 12 BTL
7	8066095675	CORONA LIGHT 12/ 12 BTL
8	7289000011	HEINEKEN 6/ 12 BTL

Segment # 1 : 1_3 36.00 In

POS	UPC	NAME
1	63598554890	WHITE CLAW VARIETY PACK 12/ 12 CAN
2	3410001509	HIGH LIFE 12/ 12 BTL
3	7199030005	COORS LIGHT 6/ 12 BTL
4	1820000833	BUD LIGHT 6/ 12 BTL
5	1820005990	MICHELOB ULTRA 12/ 12 BTL
6	78615000014	STELLA ARTOIS 12/ 11.2 BTL

Segment # 1 : 1_2 48.00 In

POS	UPC	NAME
1	8769282102	ANGRY ORCHARD CRISP APPLE 6/ 12 BTL
2	8769200149	ANGRY ORCHARD GREEN APPLE 6/ 12 BTL
3	8066095765	MODELO ESPECIAL 6/ 12 BTL
4	8066095625	CORONA LIGHT 6/ 12 BTL
5	8066095605	CORONA 6/ 12 BTL
6	18195400002	PERONI 6/ 11.2 BTL

Segment # 1 : 1_1 60.00 In

POS	UPC	NAME
1	3354400013	CORONA REFRESCA VARIETY 12/ 12 CAN
2	8769200686	TRULY VARIETY BERRY 12/ 12 CAN (SLEEK)
3	3410051681	CAPE LINE VARIETY PACK 12/ 12 CAN
4	3061300001	BROOKLYN LAGER 6/ 12 BTL
5	7199009511	BLUE MOON BELGIAN WHITE 6/ 12 BTL
6	8769210012	SAMUEL ADAMS BOSTON LAGER 6/ 12 BTL
7	78615000001	STELLA ARTOIS 6/ 11.2 BTL



CVS # 2433 WARM

Address: 2112 WHITE PLAINS RD | City: BRONX | State: NY

Chain/StoreNumer: CVS - EAST 2433

Reset Name: 2019 FALL

Planogram Name: 2433_4ft_WARM

CVS PHARMA... Store # 2433 H: 6 ft W: 4 ft D: 1 ft 11.00 in # of segments: 1

Name: 1_1 W:48.00 in D:23.00 in Avail Space: 0.96 in Ht Space: 11.00 in

ID	UPC	Barcode	Name	Category	HFacings	Orientation	Units
86777	3354400013	0 33544 00013 7	CORONA REFRESCA VARIETY...	ABOVE PREMIUM	1	Top 90	3
65035	8769200686	0 87692 00686 2	TRULY VARIETY BERRY 12/12 ...	ABOVE PREMIUM	1	Front 90	3
86788	3410051681	0 34100 51681 9	CAPE LINE VARIETY PACK 12/1...	ABOVE PREMIUM	1	Top 90	3
2616	3061300001	0 30613 00001 2	BROOKLYN LAGER 6/12 BTL	ABOVE PREMIUM	1	Front	4
10180	7199009511	0 71990 09511 6	BLUE MOON BELGIAN WHITE 6...	ABOVE PREMIUM	1	Front	4
21956	8769210012	0 87692 10012 6	SAMUEL ADAMS BOSTON LAG...	ABOVE PREMIUM	1	Front	4
14089	78615000001	7 86150 00001 4	STELLA ARTOIS 6/11.2 BTL	ABOVE PREMIUM	1	Side	3

Name: 1_2 W:48.00 in D:23.00 in Avail Space: 1.36 in Ht Space: 11.00 in

ID	UPC	Barcode	Name	Category	HFacings	Orientation	Units
22090	8769282102	0 87692 82102 1	ANGRY ORCHARD CRISP APP...	ABOVE PREMIUM	1	Front	4
21866	8769200149	0 87692 00149 2	ANGRY ORCHARD GREEN AP...	ABOVE PREMIUM	1	Front	4
15442	8066095765	0 80660 95765 4	MODELO ESPECIAL 6/12 BTL	ABOVE PREMIUM	1	Front	3
15408	8066095625	0 80660 95625 1	CORONA LIGHT 6/12 BTL	ABOVE PREMIUM	1	Front	4
15400	8066095605	0 80660 95605 3	CORONA 6/12 BTL	ABOVE PREMIUM	1	Front	4
568	18195400002	1 81954 00002 2	PERONI 6/11.2 BTL	ABOVE PREMIUM	1	Front	4

Name: 1_3 W:48.00 in D:23.00 in Avail Space: 2.09 in Ht Space: 11.00 in

ID	UPC	Barcode	Name	Category	HFacings	Orientation	Units
45151	63598554890	6 35985 54890 4	WHITE CLAW VARIETY PACK 1...	ABOVE PREMIUM	1	Front 90	3



CVS # 2433 WARM

Address: 2112 WHITE PLAINS RD | City: BRONX | State: NY

Chain/StoreNumer: CVS - EAST 2433

Reset Name: 2019 FALL

Planogram Name: 2433_4ft_WARM

3198	3410001509		HIGH LIFE 12/12 BTL	ECONOMY	1	Front	3
10322	7199030005		COORS LIGHT 6/12 BTL	PREMIUM	1	Front	4
1083	182000833		BUD LIGHT 6/12 BTL	PREMIUM	1	Front	4
1228	1820005990		MICHELOB ULTRA 12/12 BTL	ABOVE PREMIUM	1	Side	2
14094	78615000014		STELLA ARTOIS 12/11.2 BTL	ABOVE PREMIUM	1	Side	2

Name: 1_4 W:48.00 in D:23.00 in Avail Space: 0.18 in Ht Space: 12.00 in

ID	UPC	Barcode	Name	Category	HFacings	Orientation	Units
3579	3410057636		LITE 12/12 CAN	PREMIUM	1	Top 90	2
10164	7199000048		COORS LIGHT 12/12 CAN	PREMIUM	1	Top 90	3
1659	1820053047		BUD LIGHT 12/12 CAN	PREMIUM	1	Top 90	2
1297	1820011047		BUD 12/12 CAN	PREMIUM	1	Top 90	2
15429	8066095715		MODELO ESPECIAL 12/12 CAN	ABOVE PREMIUM	1	Top 90	2
51878	3354495053		CORONA FAMILIAR 12/12 BTL	ABOVE PREMIUM	1	Side	2
15416	8066095675		CORONA LIGHT 12/12 BTL	ABOVE PREMIUM	1	Side	2
11298	7289000011		HEINEKEN 6/12 BTL	ABOVE PREMIUM	1	Front	4

Name: 1_5 W:48.00 in D:23.00 in Avail Space: 0.17 in Ht Space: 22.00 in

ID	UPC	Barcode	Name	Category	HFacings	Orientation	Units
3552	3410057340		LITE 18/12 CAN	PREMIUM	1	Top 90	2
10329	7199030017		COORS LIGHT 18/12 CAN	PREMIUM	1	Top 90	3
1667	1820053218		BUD LIGHT 18/12 CAN	PREMIUM	1	Top 90	2






CVS # 2433 WARM

Address: 2112 WHITE PLAINS RD | City: BRONX | State: NY

Chain/StoreNumer: CVS - EAST 2433

Reset Name: 2019 FALL

Planogram Name: 2433_4ft_WARM

1307	1820011218	0		8	BUD 18/12 CAN	PREMIUM	1	Top 90	2
44952	3354495042	0		5	CORONA PREMIER 12/12 BTL	ABOVE PREMIUM	1	Side	4
15403	8066095615	0		2	CORONA 12/12 BTL	ABOVE PREMIUM	1	Side	4
15426	8066095695	0		4	CORONA 12/12 CAN	ABOVE PREMIUM	1	Side	4
11300	7289000016	0		3	HEINEKEN 12/12 BTL	ABOVE PREMIUM	1	Side	4