



CVS # 2551 COLD

Address: 3125 BAINBRIDGE AVE | City: BRONX | State: NY

Chain/StoreNumer: CVS - EAST 2551

Reset Name: 2019 FALL

Planogram Name: 2551\_1\_DOOR\_COLD

**Segment # 1 : 1\_5 DEPTH: 26 in WIDTH: 27 in DISTANCE FROM TOP OF BASE SHELF TO BOTTOM OF SHELF:0.00 in**

POS #	FAC	UPC	NAME	CASES	CAPACITY	UNITS HIGH	Category
1	1	7289000016	HEINEKEN 12/12 BTL	1.0	2	1	ABOVE PREMIUM
2	1	7289000020	HEINEKEN 12/12 CAN	1.5	3	1	ABOVE PREMIUM
3	1	1820011047	BUD 12/12 CAN	1.5	3	1	PREMIUM
4	1	3410001509	HIGH LIFE 12/12 BTL	1.0	2	1	ECONOMY

**Segment # 1 : 1\_4 DEPTH: 26 in WIDTH: 27 in DISTANCE FROM TOP OF BASE SHELF TO BOTTOM OF SHELF:12.00 in**

POS #	FAC	UPC	NAME	CASES	CAPACITY	UNITS HIGH	Category
1	1	8066095765	MODELO ESPECIAL 6/12 BTL	0.5	2	1	ABOVE PREMIUM
2	1	8066095715	MODELO ESPECIAL 12/12 CAN	1.5	3	1	ABOVE PREMIUM
3	1	1820053047	BUD LIGHT 12/12 CAN	1.5	3	1	PREMIUM
4	1	3410057636	LITE 12/12 CAN	1.5	3	1	PREMIUM
5	1	7199000048	COORS LIGHT 12/12 CAN	1.5	3	1	PREMIUM

**Segment # 1 : 1\_3 DEPTH: 26 in WIDTH: 27 in DISTANCE FROM TOP OF BASE SHELF TO BOTTOM OF SHELF:24.00 in**

POS #	FAC	UPC	NAME	CASES	CAPACITY	UNITS HIGH	Category
1	1	8066095615	CORONA 12/12 BTL	1.0	2	1	ABOVE PREMIUM
2	1	8066095605	CORONA 6/12 BTL	0.8	3	1	ABOVE PREMIUM
3	1	8066095625	CORONA LIGHT 6/12 BTL	0.8	3	1	ABOVE PREMIUM
4	1	3354495042	CORONA PREMIER 12/12 BTL	1.0	2	1	ABOVE PREMIUM

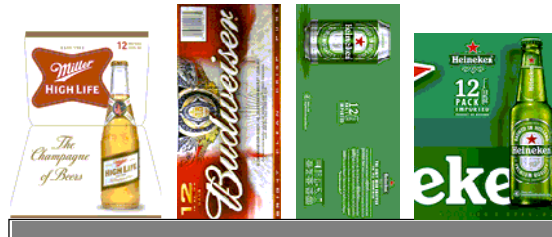
**Segment # 1 : 1\_2 DEPTH: 26 in WIDTH: 27 in DISTANCE FROM TOP OF BASE SHELF TO BOTTOM OF SHELF:36.00 in**

POS #	FAC	UPC	NAME	CASES	CAPACITY	UNITS HIGH	Category
1	1	63598554890	WHITE CLAW VARIETY PACK 12/12 CAN	1.5	3	1	ABOVE PREMIUM
2	1	3354400013	CORONA REFRESCA VARIETY 12/12 CAN	1.5	3	1	ABOVE PREMIUM
3	1	8769200686	TRULY VARIETY BERRY 12/12 CAN (SLEEK)	2.0	4	1	ABOVE PREMIUM
4	1	3410051681	CAPE LINE VARIETY PACK 12/12 CAN	2.0	4	1	ABOVE PREMIUM

**Segment # 1 : 1\_1 DEPTH: 26 in WIDTH: 27 in DISTANCE FROM TOP OF BASE SHELF TO BOTTOM OF SHELF:48.00 in**

POS #	FAC	UPC	NAME	CASES	CAPACITY	UNITS HIGH	Category
1	1	78615000001	STELLA ARTOIS 6/11.2 BTL	0.8	3	1	ABOVE PREMIUM
2	1	7289000011	HEINEKEN 6/12 BTL	0.8	3	1	ABOVE PREMIUM
3	1	8769282102	ANGRY ORCHARD CRISP APPLE 6/12 BTL	0.8	3	1	ABOVE PREMIUM
4	1	7199009532	BLUE MOON SEASONAL 6/12 BTL	0.8	3	1	ABOVE PREMIUM
5	1	7199009511	BLUE MOON BELGIAN WHITE 6/12 BTL	0.8	3	1	ABOVE PREMIUM

# REVERSE VIEW (ONLY IF NEEDED)





CVS # 2551 COLD

Reset Timing 2019 FALL

Address: 3125 BAINBRIDGE AVE | City: BRONX | State: NY

**REVERSE VIEW (ONLY IF NEEDED)**

Segment:  
1 of 1



**Segment # 1 : 1\_5 0.00 In**

POS	UPC	NAME
1	7289000016	HEINEKEN 12/ 12 BTL
2	7289000020	HEINEKEN 12/ 12 CAN
3	1820011047	BUD 12/ 12 CAN
4	3410001509	HIGH LIFE 12/ 12 BTL

**Segment # 1 : 1\_4 12.00 In**

POS	UPC	NAME
1	8066095765	MODELO ESPECIAL 6/ 12 BTL
2	8066095715	MODELO ESPECIAL 12/ 12 CAN
3	1820053047	BUD LIGHT 12/ 12 CAN
4	3410057636	LITE 12/ 12 CAN
5	7199000048	COORS LIGHT 12/ 12 CAN

**Segment # 1 : 1\_3 24.00 In**

POS	UPC	NAME
1	8066095615	CORONA 12/ 12 BTL
2	8066095605	CORONA 6/ 12 BTL
3	8066095625	CORONA LIGHT 6/ 12 BTL
4	3354495042	CORONA PREMIER 12/ 12 BTL

**Segment # 1 : 1\_2 36.00 In**

POS	UPC	NAME
1	63598554890	WHITE CLAW VARIETY PACK 12/ 12 CAN
2	3354400013	CORONA REFRESCA VARIETY 12/ 12 CAN
3	8769200686	TRULY VARIETY BERRY 12/ 12 CAN (SLEEK)
4	3410051681	CAPE LINE VARIETY PACK 12/ 12 CAN

**Segment # 1 : 1\_1 48.00 In**

POS	UPC	NAME
1	78615000001	STELLA ARTOIS 6/ 11.2 BTL
2	7289000011	HEINEKEN 6/ 12 BTL
3	8769282102	ANGRY ORCHARD CRISP APPLE 6/ 12 BTL
4	7199009532	BLUE MOON SEASONAL 6/ 12 BTL
5	7199009511	BLUE MOON BELGIAN WHITE 6/ 12 BTL



CVS # 2551 COLD

Address: 3125 BAINBRIDGE AVE | City: BRONX | State: NY

Chain/StoreNumer: CVS - EAST 2551

Reset Name: 2019 FALL

Planogram Name: 2551\_1\_DOOR\_COLD

CVS PHARMA... Store # 2551 H: 5 ft W: 2 ft 3.00 in D: 1 ft 10.00 in # of segments: 1

Name: 1\_1 W:27.00 in D:26.00 in Avail Space: 2.30 in Ht Space: 11.00 in

ID	UPC	Barcode	Name	Category	HFacings	Orientation	Units
14089	78615000001	7 86150 00001 4	STELLA ARTOIS 6/11.2 BTL	ABOVE PREMIUM	1	Side	3
11298	7289000011	0 72890 00011 8	HEINEKEN 6/12 BTL	ABOVE PREMIUM	1	Side	3
22090	8769282102	0 87692 82102 1	ANGRY ORCHARD CRISP APP...	ABOVE PREMIUM	1	Side	3
10190	7199009532	0 71990 09532 1	BLUE MOON SEASONAL 6/12 B...	ABOVE PREMIUM	1	Side	3
10180	7199009511	0 71990 09511 6	BLUE MOON BELGIAN WHITE 6...	ABOVE PREMIUM	1	Side	3

Name: 1\_2 W:27.00 in D:26.00 in Avail Space: 1.12 in Ht Space: 11.00 in

ID	UPC	Barcode	Name	Category	HFacings	Orientation	Units
45151	63598554890	6 35985 54890 4	WHITE CLAW VARIETY PACK 1...	ABOVE PREMIUM	1	Front 90	3
86777	3354400013	0 33544 00013 7	CORONA REFRESCA VARIETY...	ABOVE PREMIUM	1	Front 90	3
65035	8769200686	0 87692 00686 2	TRULY VARIETY BERRY 12/12 ...	ABOVE PREMIUM	1	Top 90	4
86788	3410051681	0 34100 51681 9	CAPE LINE VARIETY PACK 12/1...	ABOVE PREMIUM	1	Top 90	4

Name: 1\_3 W:27.00 in D:26.00 in Avail Space: 0.86 in Ht Space: 11.00 in

ID	UPC	Barcode	Name	Category	HFacings	Orientation	Units
15403	8066095615	0 80660 95615 2	CORONA 12/12 BTL	ABOVE PREMIUM	1	Side	2
15400	8066095605	0 80660 95605 3	CORONA 6/12 BTL	ABOVE PREMIUM	1	Side	3
15408	8066095625	0 80660 95625 1	CORONA LIGHT 6/12 BTL	ABOVE PREMIUM	1	Side	3
44952	3354495042	0 33544 95042 5	CORONA PREMIER 12/12 BTL	ABOVE PREMIUM	1	Side	2

Name: 1\_4 W:27.00 in D:26.00 in Avail Space: 0.82 in Ht Space: 11.00 in

ID	UPC	Barcode	Name	Category	HFacings	Orientation	Units
15442	8066095765	0 80660 95765 4	MODELO ESPECIAL 6/12 BTL	ABOVE PREMIUM	1	Side	2



CVS # 2551 COLD

Address: 3125 BAINBRIDGE AVE | City: BRONX | State: NY

Chain/StoreNumer: CVS - EAST 2551

Reset Name: 2019 FALL

Planogram Name: 2551\_1\_DOOR\_COLD

15429	8066095715		MODELO ESPECIAL 12/12 CAN	ABOVE PREMIUM	1	Top 90	3
1659	1820053047		BUD LIGHT 12/12 CAN	PREMIUM	1	Top 90	3
3579	3410057636		LITE 12/12 CAN	PREMIUM	1	Top 90	3
10164	7199000048		COORS LIGHT 12/12 CAN	PREMIUM	1	Top 90	3

Name: 1\_5    W:27.00 in    D:26.00 in    Avail Space: 2.39 in    Ht Space: 11.00 in

ID	UPC	Barcode	Name	Category	HFacings	Orientation	Units
11300	7289000016		HEINEKEN 12/12 BTL	ABOVE PREMIUM	1	Side	2
11301	7289000020		HEINEKEN 12/12 CAN	ABOVE PREMIUM	1	Top 90	3
1297	1820011047		BUD 12/12 CAN	PREMIUM	1	Top 90	3
3198	3410001509		HIGH LIFE 12/12 BTL	ECONOMY	1	Side	2