

# Foodtown Jackson Height

Store # JH

76-10 37th Ave Jackson Heights , NY



# Foodtown Jackson Heights

Store # JH

36-10 37th Ave Jackson Heights , NY

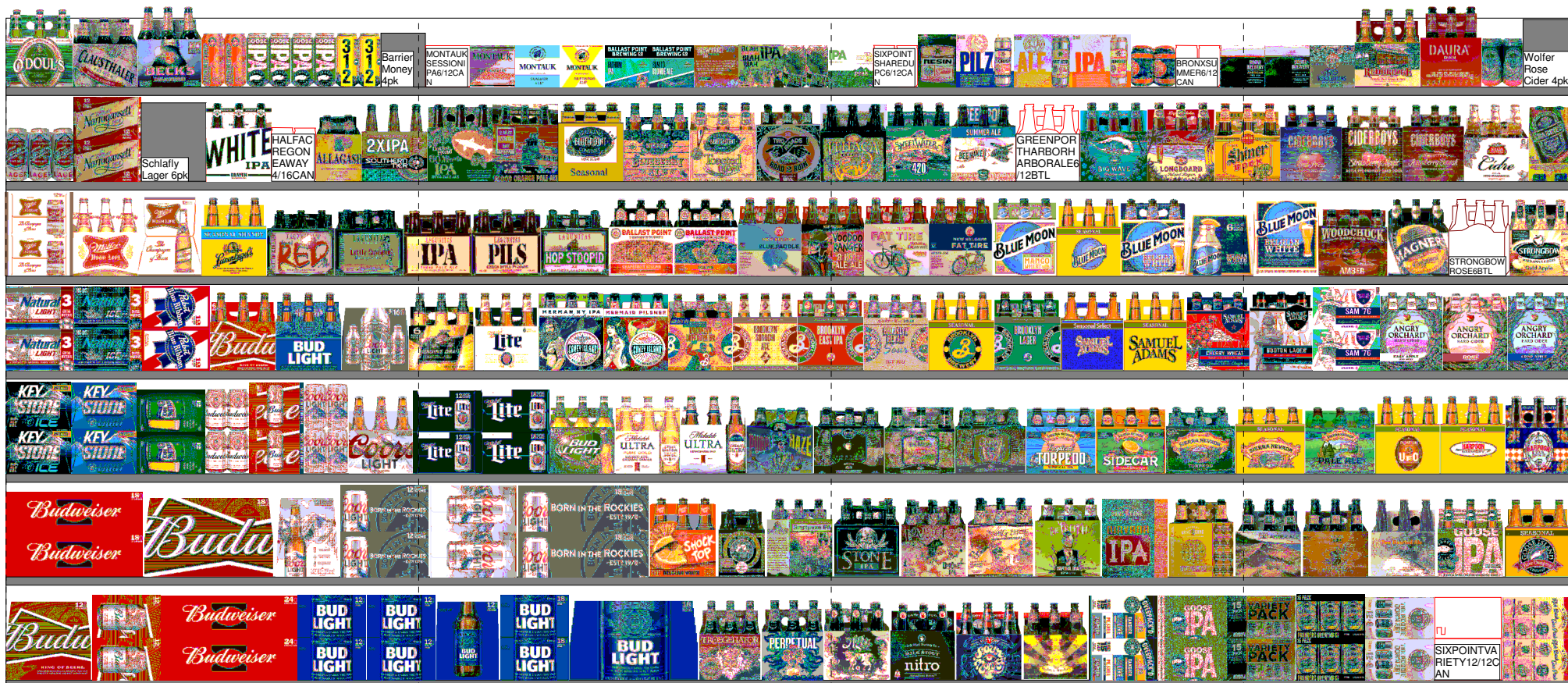




# Foodtown Jackson Heights

Store # JH

36-10 37th Ave Jackson Heights , NY



# Foodtown JacksonHeights

Store # JH

36-10 37th Ave Jackson Heights , NY





# Foodtown Jackson Height

## Store # JH

### 76-10 37th Ave Jackson Heights , NY



Segment/Door: 1	Shelf: 4'	W:38.00 in	D:43.00 in	
Position L-R	Name	Digit 12 UPC	Barcode	
#1	TATRA4/16.9OZCAN	901559846000		
#2	WARKADWUSLODOWY4/16.9OZCAN	902746640135		
#3	KONIG PILSENER 4/16.9 CAN	092824000007		
#4	BITBURGER 4/16.9 CAN	020507000112		
#5	EBPILSNER4/16.9OZCAN	686212700558		
#6	ZYWIEC4/16.9CAN	686212700169		

Segment/Door: 1	Shelf: 4'	W:38.00 in	D:43.00 in	
Position L-R	Name	Digit 12 UPC	Barcode	
#1	WARKARADLER4CAN	902746641361		
#2	OKOCIMFULLPALE4/16.9OZCAN	087600100750		
#3	CARLSBERG CAN AL 4PK 16.9 FLD OZ	087600101153		

Segment/Door: 1	Shelf: 4'	W:38.00 in	D:43.00 in	
Position L-R	Name	Digit 12 UPC	Barcode	
#1	SCHOFFERHOFERGRAPEFRUITFWZN4/16OZ...	042572044044		
#2	BECKS 4/16 CAN	082488123778		
#3	VELTINSPILSENER4CAN	005249004181		

Segment/Door: 1	Shelf: 4'	W:38.00 in	D:43.00 in	
Position L-R	Name	Digit 12 UPC	Barcode	
#1	BECKS 12/12 BTL	082488123006		
#2	STELLA ARTOIS 12/11.2 BTL	786150000144		
#3	HEINEKEN 12/12 BTL	072890000163		
#4	CORONA 12/12 BTL	080660956152		
#5	CORONA 12/12 BTL	080660956152		

# Foodtown Jackson Height

## Store # JH

76-10 37th Ave Jackson Heights , NY



Segment/Door: 2	Shelf: 4'	W:42.00 in	D:14.00 in		
Position L-R	Name	Digit 12 UPC	Barcode		
#1	REDDS 6/12 BTL	034100087166			
#2	TWISTED TEA ORIGINAL 6/12 BTL	087692831020			
#3	KINKYSUNSHINE6/12BTL	084279001104			
#4	KINKYSUNSHINE6/12BTL	084279001104			

Segment/Door: 2	Shelf: 4'	W:42.00 in	D:14.00 in		
Position L-R	Name	Digit 12 UPC	Barcode		
#1	MIKES HARD VARIETY PACK 8/16 CAN	635985260424			
#2	MIKESHARDBLACKCHERRYLEMONADE6/11.2B...	635985060673			
#3	MIKES HARD LEMONADE 6/11.2 BTL	635985100621			

Segment/Door: 2	Shelf: 4'	W:42.00 in	D:14.00 in		
Position L-R	Name	Digit 12 UPC	Barcode		
#1	TRULYGRAPEFRUITANDPOMELO6/12CAN	C			
#2	TRULYPOMEGRANATE6/12CAN	C			
#3	TRULY WILD BERRY 6/12 CAN	087692006787			
#4	TRULY COLIMA LIME 6/12 CAN	087692004172			
#5	SMIRNOFF ICE ORIGINAL 6/11.2 BTL	082000723851			

Segment/Door: 2	Shelf: 4'	W:42.00 in	D:14.00 in		
Position L-R	Name	Digit 12 UPC	Barcode		
#1	WHITE CLAW RUBY GRAPEFRUIT 6/12 CAN	635985200284			
#2	WHITE CLAW BLACK CHERRY 6/12 CAN	635985200253			
#3	WHITE CLAW NATURAL LIME 6/12 CAN	635985025986			
#4	HENRYS HARD SPARKLING PASSION FRUIT 6/1...	034100516659			
#5	HENRYS HARD SPARKLING LEMON LIME 6/12 C...	034100516642			
#6	SPIKESLTZERVEALENCIAORANGE6/12CAN	853897002295			
#7	SPIKESLTZERINDIANRIVERGRAPEFRUIT6/1...	853897002318			

Segment/Door: 2	Shelf: 4'	W:42.00 in	D:14.00 in		
Position L-R	Name	Digit 12 UPC	Barcode		
#1	WHITE CLAW VARIETY PACK 12/12 CAN	635985548904			
#2	TRULY BERRY VARIETY 12/12 CAN	087692006862			
#3	TRULY VARIETY PACK 12/12 CAN	087692004240			
#4	SMIRNOFF SELTZER VARIETY 12/12 CAN	082000781424			
#5	HENRYS HARD SPARKLING VARIETY 12/12 CAN	034100516604			
#6	SPIKED SELTZER VARIETY 12/12 CAN	853897002271			



# Foodtown Jackson Heights

Store # JH

36-10 37th Ave Jackson Heights , NY



Segment/Door: 2	Shelf: 4' SHELF	W:86.00 in	D:23.00 in	
Position L-R	Name	Digit 12 UPC	Barcode	
#1	SCHOFFERHOFERGRAPEFRUITHFVWZ4/16OZ...	042572044044		
#2	BODDINGTONSPUBALE4/16CAN	762274813938		
#3	SAPPORODRAFT6BTL	087975013501		
#4	TSINGTAO6/12BTL	033544944059		
#5	KRONENBOURG1664BLANC6/11.2BTL	851621000050		

Segment/Door: 2	Shelf: 4' SHELF	W:86.00 in	D:23.00 in	
Position L-R	Name	Digit 12 UPC	Barcode	
#1	SCHOFFERHOFERGRPFRT6BTL	042572040060		
#2	SCHOFFERHOFER12/11.2OZCAN	042572044129		
#3	GUINNESS BLONDE AMERICAN LAGER 6/12 BTL	083820181326		
#4	GUINNESS DRAUGHT STOUT 4/14.9 CAN	083820123609		
#5	GUINNESS DRAUGHT STOUT 6/11.2 BTL	083820104011		

Segment/Door: 2	Shelf: 4' SHELF	W:86.00 in	D:23.00 in	
Position L-R	Name	Digit 12 UPC	Barcode	
#1	RADEBERGERPILSNER6/16.9OZCAN	042572050267		
#2	RADEBERGERPILSNER6/11.2OZBTL	042572050069		
#3	MURPHYSIRISHSTOUT4/14.9CAN	088345101408		
#4	WEIHENSTEPHANHEFEWEISSBIER6BTL	752245141504		
#5	RED STRIPE LAGER 6/11.2 BTL	083820567939		

Segment/Door: 2	Shelf: 4' SHELF	W:86.00 in	D:23.00 in	
Position L-R	Name	Digit 12 UPC	Barcode	
#1	BECKS 6/12 BTL	082488123457		
#2	SPATEN PREMIUM LAGER BTL GL 6PK 12 FLD OZ	088394000028		
#3	MODELO ESPECIAL 6/12 CAN	080660957555		
#4	MODELO ESPECIAL 6/12 BTL	080660957654		

Segment/Door: 2	Shelf: 4' SHELF	W:86.00 in	D:23.00 in	
Position L-R	Name	Digit 12 UPC	Barcode	
#1	BECKS12/12CAN	082488123815		
#2	MODELO NEGRA 6/12 BTL	080660957852		
#3	MODELO ESPECIAL 18/12 CAN	080660957111		
#4	MODELO ESPECIAL 12/12 BTL	080660957579		

Segment/Door: 2	Shelf: 4' SHELF	W:86.00 in	D:23.00 in	
Position L-R	Name	Digit 12 UPC	Barcode	
#1	BECKS 12/12 BTL	082488123006		
#2	MODELO NEGRA 12/12 BTL	080660957876		
#3	MODELOESPECIAL24/12CAN	080660957104		
#4	MODELO ESPECIAL 12/12 CAN	080660957159		

# Foodtown Jackson Heights

## Store # JH

### 36-10 37th Ave Jackson Heights , NY



Segment/Door: 2	Shelf: 4' SHELF	W:86.00 in	D:23.00 in	
Position L-R	Name	Digit 12 UPC	Barcode	
#1	KRONENBOURG16646/12BTL	851621000227	8	51621 00022 7
#2	PILSNER URQUELL 6/11.2 BTL	072311630016	0	72311 63001 6
#3	CARLSBERG6/11.2OZBTL	087600100217	0	87600 10021 7
#4	FRANZISKANER HEFEWEISSE BTL GL 6PK 12 FL...	088394000332	0	88394 00033 2
#5	CERVEZAAGUILAPILSNER6/11.2BTL	097549132866	0	97549 13286 6
#6	CRISTAL6/12BTL	088960004955	0	88960 00495 5
#7	CUSQUENA6/11.2BTL	008896001279	0	08896 00127 9

Segment/Door: 2	Shelf: 4' SHELF	W:86.00 in	D:23.00 in	
Position L-R	Name	Digit 12 UPC	Barcode	
#1	GUINNESS EXTRA STOUT 6/12 BTL	083820123937	0	83820 12393 7
#2	MAHOORIGINAL12/8BTL	845664000139	8	45664 00013 9
#3	TECATE6/12CAN	089826000098	0	89826 00009 8
#4	TECATE 12/12 CAN	089826900336	0	89826 90033 6
#5	DOS EQUIS AMBER 6/12 BTL	072311630115	0	72311 63011 5
#6	DOS EQUIS 6/12 BTL	072311630122	0	72311 63012 2
#7	CORONA PREMIER 12/12 CAN	033544950449	0	33544 95044 9

Segment/Door: 2	Shelf: 4' SHELF	W:86.00 in	D:23.00 in	
Position L-R	Name	Digit 12 UPC	Barcode	
#1	PRESIDENTE6/12BTL	719057001310	7	19057 00131 0
#2	PRESIDENTE 12/12 BTL	719057001563	7	19057 00156 3
#3	PACIFICO 6/12 BTL	080660953014	0	80660 95301 4
#4	VICTORIA 6/12 BTL	080660958811	0	80660 95881 1
#5	CORONA PREMIER 6/12 BTL	033544950418	0	33544 95041 8
#6	CORONA PREMIER 12/12 BTL	033544950425	0	33544 95042 5

Segment/Door: 2	Shelf: 4' SHELF	W:86.00 in	D:23.00 in	
Position L-R	Name	Digit 12 UPC	Barcode	
#1	CORONA LIGHT 6/12 BTL	080660956251	0	80660 95625 1
#2	CORONA LIGHT 12/12 BTL	080660956756	0	80660 95675 6
#3	CORONA 6/12 BTL	080660956053	0	80660 95605 3
#4	CORONA 6/7 BTL	080660954011	0	80660 95401 1
#5	CORONA 6/12 CAN	080660956855	0	80660 95685 5

Segment/Door: 2	Shelf: 4' SHELF	W:86.00 in	D:23.00 in	
Position L-R	Name	Digit 12 UPC	Barcode	
#1	CORONA FAMILIAR 6/12 BTL	033544950517	0	33544 95051 7
#2	CORONA 12/12 BTL	080660956152	0	80660 95615 2
#3	CORONA 18/12 BTL	080660956800	0	80660 95680 0
#4	CORONA 12/12 CAN	080660956954	0	80660 95695 4

Segment/Door: 2	Shelf: 4' SHELF	W:86.00 in	D:23.00 in	
Position L-R	Name	Digit 12 UPC	Barcode	
#1	CORONA FAMILIAR 12/12 BTL	033544950531	0	33544 95053 1
#2	CORONA 12/12 BTL	080660956152	0	80660 95615 2
#3	CORONA 24/7 BTL	080660954080	0	80660 95408 0
#4	CORONA24/12BTL(HG)	080660956084	0	80660 95608 4



# Foodtown Jackson Heights

## Store # JH

### 36-10 37th Ave Jackson Heights , NY



Segment/Door: 3	Shelf: 4'	W:34.00 in	D:15.00 in		
Position L-R	Name	Digit 12 UPC	Barcode		
#1	PERONI 6/11.2 BTL	181954000022			
#2	PERONI 6/11.2 CAN	181954001159			
#3	LEFFE BROWN 6/11.2 BTL	786150000762			
#4	LEFFE BLONDE 6/11.2 BTL	786150000304			
#5	HOEGAARDEN WHITE 6/11.2 BTL	786150000366			

Segment/Door: 3	Shelf: 4'	W:34.00 in	D:15.00 in		
Position L-R	Name	Digit 12 UPC	Barcode		
#1	GROLSCH6/11.2BTL	083741000058			
#2	STELLA ARTOIS 12/11.2 CAN	786150000168			
#3	STELLA ARTOIS 6/12 CAN	786150002001			
#4	STELLA ARTOIS 6/11.2 BTL	786150000014			

Segment/Door: 3	Shelf: 4'	W:34.00 in	D:15.00 in		
Position L-R	Name	Digit 12 UPC	Barcode		
#1	HEINEKEN 6/12 BTL	072890000118			
#2	HEINEKEN 4/16 CAN	072890000835			
#3	HEINEKEN LIGHT 6/12 BTL	072890001580			
#4	AMSTEL LIGHT 6/12 BTL	072890100115			

Segment/Door: 3	Shelf: 4'	W:34.00 in	D:15.00 in		
Position L-R	Name	Digit 12 UPC	Barcode		
#1	HEINEKEN 12/12 CAN	072890000200			
#2	HEINEKEN 6/7 BTL	072890000422			
#3	HEINEKEN LIGHT 12/12 BTL	072890001597			
#4	AMSTEL LIGHT 12/12 BTL	072890100160			

Segment/Door: 3	Shelf: 4'	W:34.00 in	D:15.00 in		
Position L-R	Name	Digit 12 UPC	Barcode		
#1	HEINEKEN 12/12 BTL	072890000163			
#2	STELLA ARTOIS 12/11.2 BTL	786150000144			

# Foodtown Jackson Heights

## Store # JH

### 36-10 37th Ave Jackson Heights , NY



Segment/Door: 2	Shelf: 4' SHELF	W:182.00 in	D:23.00 in	Digit 12 UPC	Barcode
Position L-R	Name				
#1	ODOULS NEAR BEER 6/12 BTL			018200007842	0 18200 00784 2
#2	CLAUSTHALER 6BTL			042572057150	0 42572 05715 0
#3	BECK'S NEAR BEER 6/12 BTL			082488127004	0 82488 12700 4
#4	SHOCK TOP BELGIAN WHITE 4/16 CAN			018200009013	0 18200 00901 3
#5	GOOSE ISLAND IPA 4/16 CAN			736920114397	7 36920 11439 7
#6	GOOSEISLAND312URBANWHITEALE4/16CAN			736920113826	7 36920 11382 6
#7	Barrier Money 4pk			0 100000 0	0 100000 0

Segment/Door: 2	Shelf: 4' SHELF	W:182.00 in	D:23.00 in	Digit 12 UPC	Barcode
Position L-R	Name				
#1	NARRAGANSETT6/16CAN			072130550014	0 72130 55001 4
#2	NARRAGANSETT12/12CAN			070310001417	0 70310 00141 7
#3	Schlafly Lager 6pk			0 100000 0	0 100000 0
#4	BRAVENWHITE6/12BTL			869750000017	8 69750 00001 7
#5	HALFACREGONEAWAY4/16CAN			850438002547	8 50438 00254 7
#6	ALLAGASH WHITE 4/12 BTL			603675101821	6 03675 10182 1
#7	SOUTHERN TIER 2XIPA 6/12 BTL			853759000278	8 53759 00027 8

Segment/Door: 2	Shelf: 4' SHELF	W:182.00 in	D:23.00 in	Digit 12 UPC	Barcode
Position L-R	Name				
#1	HIGH LIFE 12/12 CAN			034100016364	0 34100 01636 4
#2	HIGHLIFE6/12BTL			034100015053	0 34100 01505 3
#3	HIGH LIFE 12/12 BTL			034100015091	0 34100 01509 1
#4	LEINIES SEASONAL SHANDY 6/12 BTL			034100516055	0 34100 51605 5
#5	LAGUNITAS SEASONAL 6/12 BTL			7238300000148	7 23830 00001 48
#6	LAGUNITAS LITTLE SUMPIN 6/12 BTL			7238300000209	7 23830 00002 09

Segment/Door: 2	Shelf: 4' SHELF	W:182.00 in	D:23.00 in	Digit 12 UPC	Barcode
Position L-R	Name				
#1	NATURAL LIGHT 15/12 CAN			018200200779	0 18200 20077 9
#2	NATURAL ICE 15/12 CAN			018200284434	0 18200 28443 4
#3	PABST 12/12 CAN			022100001701	0 22100 00170 1
#4	BUD 6/12 BTL			018200008344	0 18200 00834 4
#5	BUD LIGHT 6/12 BTL			018200008337	0 18200 00833 7
#6	COORS LIGHT 9/16 BTL (AL)			071990301040	0 71990 30104 0

Segment/Door: 2	Shelf: 4' SHELF	W:182.00 in	D:23.00 in	Digit 12 UPC	Barcode
Position L-R	Name				
#1	KEYSTONEICE15/12CAN			071990281519	0 71990 28151 9
#2	KEYSTONE LIGHT 15/12 CAN			071990480455	0 71990 48045 5
#3	ROLLING ROCK 12/12 CAN			071439344508	0 71439 34450 8
#4	BUD 6/12 CAN			018200000164	0 18200 00016 4
#5	BUD 8/16 CAN			018200008917	0 18200 00891 7
#6	COORS LIGHT 6/12 CAN			071990000080	0 71990 00008 0
#7	COORS LIGHT 6/12 BTL			071990300050	0 71990 30005 0

Segment/Door: 2	Shelf: 4' SHELF	W:182.00 in	D:23.00 in	Digit 12 UPC	Barcode
Position L-R	Name				
#1	BUD 18/12 CAN			018200112188	0 18200 11218 8
#2	BUD 18/12 BTL			018200113086	0 18200 11308 6
#3	COORS LIGHT 12/12 BTL			071990300692	0 71990 30069 2
#4	COORS LIGHT 12/12 CAN			071990000486	0 71990 00048 6

Segment/Door: 2	Shelf: 4' SHELF	W:182.00 in	D:23.00 in	Digit 12 UPC	Barcode
Position L-R	Name				
#1	BUD 12/12 BTL			018200007712	0 18200 00771 2
#2	BUD 12/12 CAN			018200110474	0 18200 11047 4
#3	BUD 24/12 CAN			018200111686	0 18200 11168 6
#4	BUD LIGHT 12/12 CAN			018200530470	0 18200 53047 0
#5	BUD LIGHT 12/12 CAN			018200530470	0 18200 53047 0



# Foodtown Jackson Heights

## Store # JH

36-10 37th Ave Jackson Heights , NY



Segment/Door	2	Shelf	4	SHELF	W: 182.00 in	D: 23.00 in		
Position L-R	Name					Digit	12	UPC
#1	MONTAUKSESSIONIPA6/12CAN					862737000070	6	862737 00007 0
#2	MONTAUKWAVECHASER6/12CAN					869071000278	8	869071 00027 8
#3	MONTAUKSUMMER6/12CAN					862737000063	5	862737 00006 3
#4	MONTAUKDRIFTWOOD6/12CAN					862737000001	1	862737 00000 1
#5	BALLAST POINT FATHOM IPA 6/12 CAN					672438002002	2	672438 00200 2
#6	BALLAST POINT BONITO BLONE 6/12 CAN					672438001623	3	672438 00162 3
#7	Z1ST AMENDMENT BREW FREE OR DIE 6/12 CAN					859612001031	1	859612 00103 1
#8	Z1ST AMENDMENT BLAH BLAH BLAH 6/12 CAN					859612001307	7	859612 00130 7
#9	REVOLUTION ANTI HERO 6/12 CAN					851464003089	9	851464 00308 9

Segment/Door	2	Shelf	4	SHELF	W: 182.00 in	D: 23.00 in		
Position L-R	Name					Digit	12	UPC
#1	DOG FISH HEAD 60 MINUTE IPA 6/12 BTL					638489000299	9	638489 00029 9
#2	GREATSOUTH BAY BLOOD ORANGE PALE ALE 6/12 BTL					851148005002	2	851148 00500 2
#3	BLUE POINT HOPTICAL ILLUSION IPA 6/12 BTL					681745111185	5	681745 11118 5
#4	BLUE POINT BLUEBERRY ALE 6/12 BTL					681745111307	7	681745 11130 7
#5	BLUE POINT TOASTED LAGER 6/12 BTL					681745111123	2	681745 11112 2
#6	TWO ROADS ROAD 2 RUIN 6/12 BTL					819578010065	5	819578 01006 5

Segment/Door	2	Shelf	4	SHELF	W: 182.00 in	D: 23.00 in		
Position L-R	Name					Digit	12	UPC
#1	LAGUNITAS IPA 6/12 BTL					723830000094	4	723830 00009 4
#2	LAGUNITAS PILSNER 6/12 BTL					723830000117	7	723830 00011 7
#3	LAGUNITAS HOP STOOPID 6/12 BTL					723830100015	5	723830 10001 5
#4	BALLAST POINT GRAPEFRUIT SCULPIN IPA 6/12 BTL					672438000688	8	672438 00068 8
#5	BALLAST POINT SCULPIN IPA 6/12 BTL					672438000244	4	672438 00024 4
#6	NEW BELGIUM PILSNER 6/12 BTL					754527001025	5	754527 00102 5

Segment/Door	2	Shelf	4	SHELF	W: 182.00 in	D: 23.00 in		
Position L-R	Name					Digit	12	UPC
#1	MGD 6/12 BTL					034100175054	4	034100 17505 4
#2	LITE 6/12 BTL					034100575052	2	034100 57505 2
#3	CONEY ISLAND MERMAN PILSNER 6/12 BTL					887151000994	4	887151 00099 4
#4	CONEY ISLAND MERMAID PILSNER 6/12 BTL					887151000949	9	887151 00094 9
#5	BROOKLYN DEFENDER IPA 6/12 BTL					030613112128	8	030613 11212 8
#6	BROOKLYN SORACHI ACE 6/12 BTL					030613107773	3	030613 10777 3
#7	BROOKLYN EAST IPA 6/12 BTL					030613000197	7	030613 00019 7

Segment/Door	2	Shelf	4	SHELF	W: 182.00 in	D: 23.00 in		
Position L-R	Name					Digit	12	UPC
#1	LITE 12/12 CAN					034100573633	3	034100 57363 3
#2	LITE 18/12 CAN					034100573409	9	034100 57340 9
#3	BUD LIGHT LIME 6/12 BTL					018200149917	7	018200 14991 7
#4	MICHELOB ULTRA PURE GOLD 6/12 BTL					018200200823	3	018200 20082 3
#5	MICHELOB ULTRA 6/12 BTL					018200059896	6	018200 05989 6
#6	ABITA PURPLE HAZE 6/12 BTL					080020422303	3	080020 42230 3

Segment/Door	2	Shelf	4	SHELF	W: 182.00 in	D: 23.00 in		
Position L-R	Name					Digit	12	UPC
#1	COORS LIGHT 24/12 CAN					071990316006	6	071990 31600 6
#2	COORS LIGHT 18/12 CAN					071990300173	3	071990 30017 3
#3	SHOCK TOP BELGIAN WHITE 6/12 BTL					018200139864	4	018200 13986 4
#4	NORTHCOAST RASPUTIN 4/12 BTL					727344000236	6	727344 00023 6
#5	SMUTTYNOSE FINEST KIND IPA 6/12 BTL					795563000092	2	795563 00009 2

Segment/Door	2	Shelf	4	SHELF	W: 182.00 in	D: 23.00 in		
Position L-R	Name					Digit	12	UPC
#1	BUD LIGHT 12/12 BTL					01820007899	9	018200 07899 9
#2	BUD LIGHT 18/12 CAN					018200532184	4	018200 53218 4
#3	BUD LIGHT 18/12 BTL					018200533082	2	018200 53308 2
#4	TROEGS TROEGATOR 6/12 BTL					637704000724	4	637704 00072 4
#5	TROEGS PERPETUAL IPA 6/12 BTL					637704062517	7	637704 06251 7

# Foodtown Jackson Heights

## Store # JH

36-10 37th Ave Jackson Heights , NY



Segment	Door	Shelf	4' SHELF	W:182.00 in	D:23.00 in	Name	Digit 12 UPC	Barcode
#1						PEAK ORGANIC IPA 6/12 CAN	78036968061	
#2						SIXPOINT SHARED UPC 6/12 CAN	859093002473	
#3						SIXPOINT RESIN IPA 6/12 CAN	859093002466	
#4						SIXPOINT THE CRISP 6/12 CAN	859093002442	
#5						SIXPOINT SWEET ACTION 6/12 CAN	859093002428	
#6						SIXPOINT BENGALI IPA 6/12 CAN	859093002435	
#7						CIGARCITY JAJA IPA 6/12 CAN	897853002936	
#8						BRONX SUMMER 6/12 CAN	856632004271	
#9						BRONX AMERICAN PALE ALE 6/12 CAN	856632004233	

Segment	Door	Shelf	4' SHELF	W:182.00 in	D:23.00 in	Name	Digit 12 UPC	Barcode
#1						ITHACA FLOWER POWER 6/12 BTL	606905008303	
#2						SWEETWATER 420 6/12 BTL	631234300026	
#3						GREENPORT HARBOR SEASONAL 6/12 BTL	859989005229	
#4						GREENPORT HARBOR HARBOR ALE 6/12 BTL	859989005045	
#5						KONA BIG WAVE GOLDEN ALE 6/12 BTL	796030114960	
#6						KONA LONGBOARD ISLAND LAGER 6/12 BTL	796030114946	

Segment	Door	Shelf	4' SHELF	W:182.00 in	D:23.00 in	Name	Digit 12 UPC	Barcode
#1						NEW BELGIUM VODOO RANGER 8 HOP 6/12	754527007469	
#2						NEW BELGIUM FAT TIRE BELGIAN WHITE 6/12	754527007164	
#3						NEW BELGIUM FAT TIRE 6/12 BTL	754527000226	
#4						BLUE MOON MANGO WHEAT 6/12 BTL	07199095611	
#5						BLUE MOON SEASONAL 6/12 BTL	07199095321	
#6						BLUE MOON BELGIAN WHITE 6/12 BTL	07199095116	
#7						BLUE MOON BELGIAN WHITE 6/16 BTL (AL)	071990170448	

Segment	Door	Shelf	4' SHELF	W:182.00 in	D:23.00 in	Name	Digit 12 UPC	Barcode
#1						BROOKLYN BELAIR SOUR BTL	030613019519	
#2						BROOKLYN SEASONAL 6/12 BTL	030613000531	
#3						BROOKLYN LAGER 6/12 BTL	030613000012	
#4						SAMUEL ADAMS PORCH ROCKER 6/12 BTL	087652000044	
#5						SAMUEL ADAMS SEASONAL 6/12 BTL	087652000502	
#6						SAMUEL ADAMS CHERRY WHEAT ALE 6/12 BTL	087652212024	

Segment	Door	Shelf	4' SHELF	W:182.00 in	D:23.00 in	Name	Digit 12 UPC	Barcode
#1						FOUNDERS AMERICAN PORTER 6/12 BTL	642862002029	
#2						FOUNDERS ALL DAY SESSION IPA 6/12 BTL	642862002046	
#3						FOUNDERS CENTENNIAL IPA 6/12 BTL	642862002055	
#4						SIERRA NEVADA TORPEDO TROPICAL 6/12 BTL	083783375435	
#5						SIERRA NEVADA SIDECAR ORANGE 6/12 BTL	083783375336	
#6						SIERRA NEVADA TORPEDO IPA 6/12 BTL	083783331004	

Segment	Door	Shelf	4' SHELF	W:182.00 in	D:23.00 in	Name	Digit 12 UPC	Barcode
#1						STONE IPA 6/12 BTL	636251776120	
#2						FLYING DOG DOUBLED OG 6/12 BTL	786243560005	
#3						FLYING DOG RAGING BITCH 6/12 BTL	786243119906	
#4						FLYING DOG THE TRUTH 6/12 BTL	786243550143	
#5						OMMEGANG NIRVANA IPA 6/12 BTL	649440998180	
#6						OMMEGANG WITTE 6/12 BTL	649440000654	

Segment	Door	Shelf	4' SHELF	W:182.00 in	D:23.00 in	Name	Digit 12 UPC	Barcode
#1						LEFT HAND MLK STOUT 6/12 BTL	793866360028	
#2						LEFT HAND MLK STOUT NITRO 6/12 BTL	793866530025	
#3						VICTORY SOUR MONKEY 6/12 BTL	63027976063	
#4						VICTORY GOLDEN MONKEY 6/12 BTL	630279485066	
#5						SOUTHERN TIER OVERPACK 15/12 CAN	816014020800	
#6						GOOSE ISLAND IPA 15/12 CAN	736920116513	



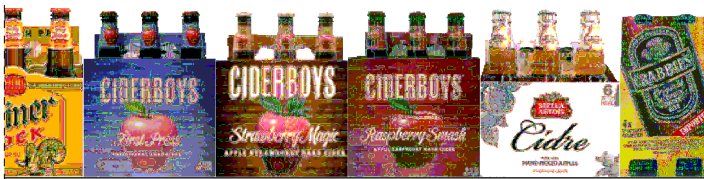
# Foodtown Jackson Heights

## Store # JH

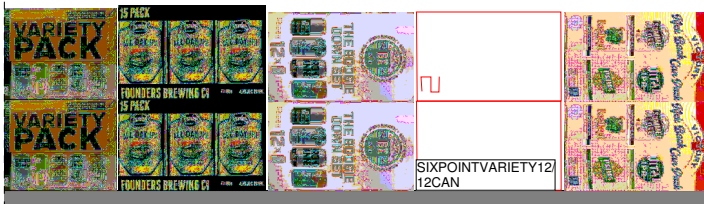
### 36-10 37th Ave Jackson Heights , NY



Wolfers Rose Cider 4pk



Strongbow Rose 6BTL



Sixpoint Variety 12/12CAN

Segment/Door: 2	Shelf: 4' SHELF	W:182.00 in	D:23.00 in		
Position L-R	Name	Digit 12 UPC	Barcode		
#1	BRONXPALAEAL6/12CAN	856632004257	856632004257	7	
#2	BRONXNORESOLUTIONS6/12CAN	856632004332	856632004332	2	
#3	REDBRIDGE 6/12 BTL	018200119859	018200119859	9	
#4	ESTRELLADAMMDAURA6/11.2OZBTL	050648263831	050648263831	1	
#5	DOWNEAST ORIGINAL CIDER 4/12 CAN	858612003052	858612003052	2	
#6	Wolfers Rose Cider 4pk		000000	0	

Segment/Door: 2	Shelf: 4' SHELF	W:182.00 in	D:23.00 in		
Position L-R	Name	Digit 12 UPC	Barcode		
#1	SHINER BOCK 6/12 BTL	088573331011	088573331011	1	
#2	CIDERBOYSFIRSTPRESS6/11.2BTL	088733900026	088733900026	6	
#3	CIDERBOYSMAGICAPPLE6/11.2BTL	088733900125	088733900125	5	
#4	CIDERBOYSCRANBERRYROAD6/11.2BTL	088733900224	088733900224	4	
#5	STELLA ARTOIS CIDRE 6/12 BTL	018200240010	018200240010	0	
#6	CRABBIES GINGER BEER BTL GL 4PK 11.2 FLD OZ	848557000001	848557000001	1	

Segment/Door: 2	Shelf: 4' SHELF	W:182.00 in	D:23.00 in		
Position L-R	Name	Digit 12 UPC	Barcode		
#1	BLUE MOON BELGIAN WHITE 12/12 BTL	071990095161	071990095161	1	
#2	WOODCHUCKAMBER6/12BTL	014974500091	014974500091	1	
#3	MAGNERSIRISHAPPLECIDER6/11.2BTL	815351010369	815351010369	9	
#4	STRONGBOWROSE6BTL	088345102016	088345102016	6	
#5	STRONGBOW GOLD 6/11.2 BTL	088345101514	088345101514	4	

Segment/Door: 2	Shelf: 4' SHELF	W:182.00 in	D:23.00 in		
Position L-R	Name	Digit 12 UPC	Barcode		
#1	SAMUEL ADAMS BOSTON LAGER 6/12 BTL	087692100126	087692100126	6	
#2	SAM ADAMS 76 6/12 CAN	087692006732	087692006732	2	
#3	ANGRY ORCHARD EASY APPLE 6/12 BTL	087692004332	087692004332	2	
#4	ANGRYORCHARDROSE6BTL	087692006602	087692006602	2	
#5	ANGRY ORCHARD CRISP APPLE 6/12 BTL	087692821021	087692821021	1	

Segment/Door: 2	Shelf: 4' SHELF	W:182.00 in	D:23.00 in		
Position L-R	Name	Digit 12 UPC	Barcode		
#1	SIERRA NEVADA SEASONAL 6/12 BTL	083783228229	083783228229	9	
#2	SIERRA NEVADA PALE ALE 6/12 BTL	083783375213	083783375213	3	
#3	HARPOONFOSEASONAL6/12BTL	041827900463	041827900463	3	
#4	HARPOONSEASONAL6/12BTL	041827001467	041827001467	7	
#5	HARPOONIPA6/12BTL	041827000767	041827000767	7	

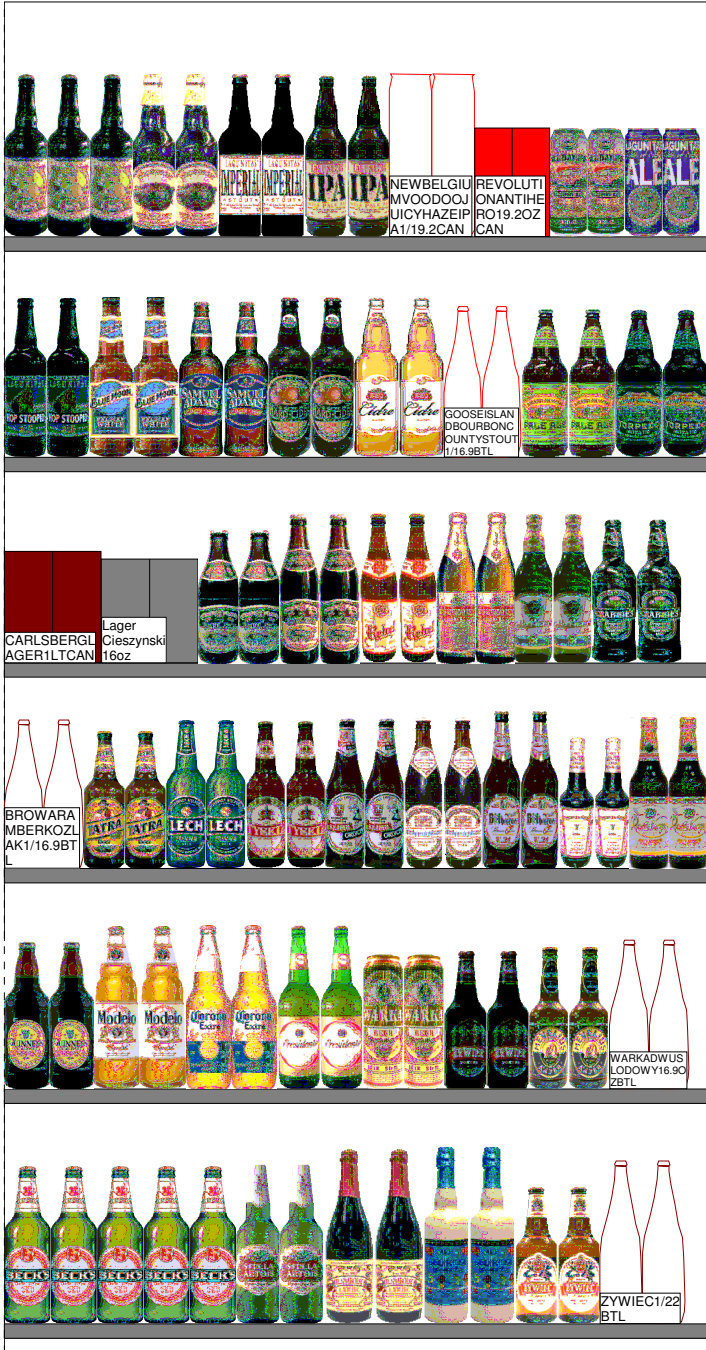
Segment/Door: 2	Shelf: 4' SHELF	W:182.00 in	D:23.00 in		
Position L-R	Name	Digit 12 UPC	Barcode		
#1	BELLS AMBER ALE 6/12 BTL	740522100238	740522100238	8	
#2	BELLS PORTER 6/12 BTL	740522100306	740522100306	6	
#3	BELLS TWO HEARTED ALE 6/12 BTL	740522100832	740522100832	2	
#4	GOOSE ISLAND IPA 6/12 BTL	736920111327	736920111327	7	
#5	GOOSE ISLAND SUMMER ALE 6/12 BTL	736920111181	736920111181	1	

Segment/Door: 2	Shelf: 4' SHELF	W:182.00 in	D:23.00 in		
Position L-R	Name	Digit 12 UPC	Barcode		
#1	21ST AMENDMENT VARIETY PACK 15/12 CAN	859612001345	859612001345	5	
#2	FOUNDERS ALL DAY SESSION IPA 15/12 CAN	642869000245	642869000245	5	
#3	BRONXVARIETYPACK12/12CAN	856632004288	856632004288	8	
#4	SIXPOINTVARIETY12/12CAN	859093002619	859093002619	9	
#5	VICTORYKICKBACK12CAN	630279887127	630279887127	7	

# Foodtown JacksonHeights

## Store # JH

36-10 37th Ave Jackson Heights , NY



Segment	Door	Shelf	4' SHELF	W:48.00 in	D:24.00 in	Digit 12 UPC	Barcode
#1						72383000032	7 23830 00032
#2						653792009302	6 53792 009302
#3						72383000025	7 23830 00025
#4						72383000049	7 23830 00049
#5						75427088571	7 54270 88571
#6						851464003539	8 51464 003539
#7						642860130246	6 42860 130246
#8						723830192478	7 23830 192478
#1						72383000018	7 23830 00018
#2						07190095130	0 71900 95130
#3						087692102007	0 87692 102007
#4						016121022005	0 16121 022005
#5						018200251016	0 18200 251016
#6						739920116148	7 39920 116148
#7						083783375220	0 83783 375220
#8						083783675054	0 83783 675054
#1						087600101399	0 87600 101399
#2							0 00000
#3						805324716015	8 05324 716015
#4						805324716091	8 05324 716091
#5						637866025115	6 37866 025115
#6						182330000018	1 82330 000018
#7						723815400019	7 23815 400019
#8						848557000018	8 48557 000018
#1						686212700787	6 86212 700787
#2						686212700237	6 86212 700237
#3						835609002014	8 35609 002014
#4						835609002014	8 35609 002014
#5						835609001062	8 35609 001062
#6						087600100705	0 87600 100705
#7						752245111507	7 52245 111507
#8						020507000242	0 20507 000242
#9						037028011510	0 37028 011510
#10						042572055019	0 42572 055019
#1						083820234800	0 83820 234800
#2						080660957777	0 80660 957777
#3						080660956411	0 80660 956411
#4						719057001419	7 19057 001419
#5						686212012187	6 86212 012187
#6						68621234128	6 86212 34128
#7						68621212504	6 86212 12504
#8						686212700275	6 86212 700275
#1						082488000062	0 82488 000062
#2						78615000571	7 86150 000571
#3						085725108149	0 85725 108149
#4						60878252008	6 08782 52008
#5						69927813009	6 99278 13009
#6						686212700138	6 86212 700138



# Foodtown JacksonHeights

## Store # JH

36-10 37th Ave Jackson Heights , NY



Segment/Door 2	Shelf 4 SHELVE	W:48.00 in	D:24.00 in	Barcode
Position L-R	Name	Digit 12 UPC		
#1	BECKS125.4CAN	018200250286		
#2	KIRINCHIBAN125CAN	040053148431		
#3	ASAHDRAFT24OZCAN	038766302304		
#4	SAPPORO20OZCAN	087975026561		
#5	SAPPOROBBLACKSTOUTDRAFT22OZCAN	087975265500		
#6	SAPPOROBBLACKBEER20OZCAN	087975265506		
#7	FOSTERSPREMIUM125.4CAN	070897183315		
Segment/Door 2	Shelf 4 SHELVE	W:48.00 in	D:24.00 in	Barcode
Position L-R	Name	Digit 12 UPC		
#1	HEINEKEN 1/24 CAN	072890001191		
#2	CORONA 1/24 CAN	080669556435		
#3	CORONA PREMIER 3.2% 1/24 CAN	033544950470		
#4	MODELO ESPECIAL 1/24 CAN	080669557210		
#5	TECATE LIGHT 1/24 CAN	089826901241		
#6	TECATE 1/24 CAN	089826001422		
#7	FOSTERS 125.4 CAN	070897013315		
Segment/Door 2	Shelf 4 SHELVE	W:48.00 in	D:24.00 in	Barcode
Position L-R	Name	Digit 12 UPC		
#1	MIKES HARDER LEMONADE 1/23.5 CAN	635985245834		
#2	MIKES HARDER CRANBERRY LEMONADE 1/23	635985249856		
#3	TWISTED TEA HALF AND HALF 1/24 CAN	087692752318		
#4	TWISTED TEA ORIGINAL 1/24 CAN	087692823217		
#5	BUD LIGHT LIME 1/25 CAN	018200250595		
#6	BUD LIGHT LIME-LIME-A-RITA 1/25 CAN	018200250149		
#7	BUD LIGHT LIME MANG-O-RITA 1/25 CAN	018200255335		
#8	STELLA ARTOIS 1/19.2 CAN	786150001707		
Segment/Door 2	Shelf 4 SHELVE	W:48.00 in	D:24.00 in	Barcode
Position L-R	Name	Digit 12 UPC		
#1	COORS LIGHT 1/24 CAN	071990300654		
#2	LITE 1/24 CAN	034100003555		
#3	MGD1/24CAN	034100005559		
#4	MICHELOB ULTRA 1/25 CAN	018200250101		
#5	STEEL RESERVE ALLOY SPIKED WATERMELO	078250006189		
#6	STEEL RESERVE ALLOY BLK BERRY 1/24 CAN	078250006059		
#7	WHITECLAWBLACKCHERRY19.2OZCAN	635985260387		
#8	SPKESSELZERINDIANRIVERGRAPEFRUIT1/1	8538970021895		
Segment/Door 2	Shelf 4 SHELVE	W:48.00 in	D:24.00 in	Barcode
Position L-R	Name	Digit 12 UPC		
#1	KEYSTONE LIGHT 1/24 CAN	071990480240		
#2	KEYSTONE ICE 1/24 CAN	071990477127		
#3	COORS BANQUET 1/24 CAN	071990100711		
#4	GENESSEE CREAM ALE 1/24 CAN	070310001509		
#5	MILWAUKEES BEST ICE 1/24 CAN	034100008208		
#6	BUD LIGHT 1/25 CAN	018200250019		
#7	BUD 1/25 CAN	018200250002		
Segment/Door 2	Shelf 4 SHELVE	W:48.00 in	D:24.00 in	Barcode
Position L-R	Name	Digit 12 UPC		
#1	NATURAL LIGHT 1/25 CAN	018200250026		
#2	NATURAL ICE 1/25 CAN	018200250088		
#3	NATTY DADDY 1/25 CAN	018200250132		
#4	ROLLING ROCK 1/25 CAN	071439006017		
#5	NARRAGANSETT 1/24CAN	68907611756		
#6	PABST 1/24CAN	022100000049		
Segment/Door 2	Shelf 4 SHELVE	W:48.00 in	D:24.00 in	Barcode
Position L-R	Name	Digit 12 UPC		
#1	COORSLIGHT 1/18BTL	087800000348		
#2	COORSLIGHT 1/40BTL	071990300425		
#3	BUDLIGHT 1/18BTL(AL)	018200004568		
#4	BUDLIGHT 1/40BTL	018200001604		
#5	BUD1/18BTL	018200004551		
#6	BUD 1/40 BTL	018200001260		