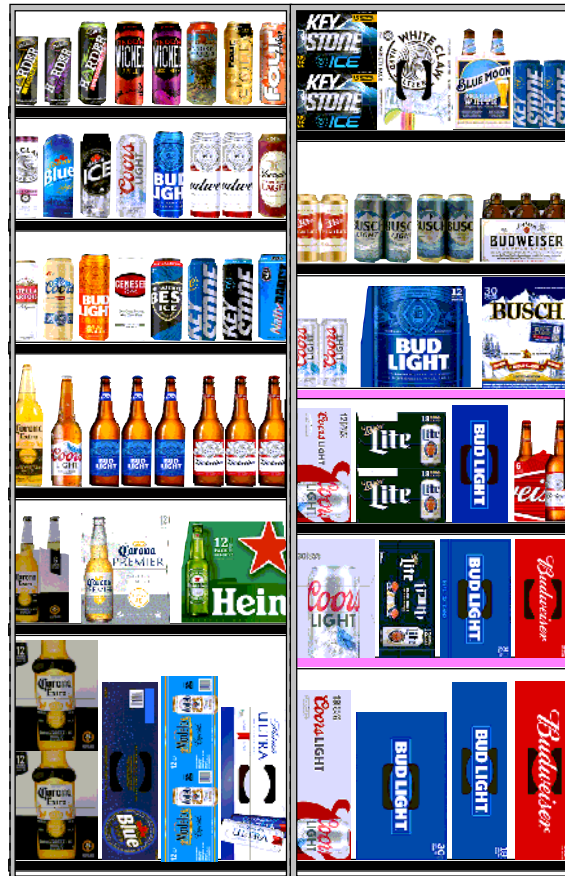




Store # 123

27 MILL ST LIBERTY, NY





Store # 123

27 MILL ST LIBERTY, NY

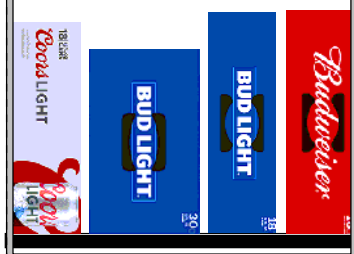
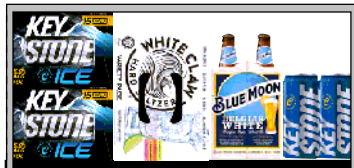


9.0	9999.	D=	\$0.00	\$0.00	
M=	0	9999	999.0	4.3	
(\$0.00)	M=	999.0	D=	4.3	
W=	0.0	M=	0.0	9	
0	W=	0	W=	0	
D=	22.99	D=	29.99	D=	23.00
22.99	M=	0.4	99.99	M=	0.0
M=	0.4	W=	0	W=	0
D=	9.0	D=	9.0	D=	31.15
9.0	M=	0	99.99	M=	0.4
0	W=	0	W=	0	0
D=	9.0	D=	9.0	D=	8.7
9.0	M=	0	99.99	M=	0.0
0	W=	0	W=	0	0
D=	0.0	D=	0.0	D=	0.0
0.0	M=	0	99.99	M=	0.0
0	W=	0	W=	0	0
D=	0.0	D=	0.0	D=	0.0
0.0	M=	0	99.99	M=	0.0
0	W=	0	W=	0	0
D=	11.0	D=	11.0	D=	11.0
11.0	M=	0	99.99	M=	0.0
0	W=	0	W=	0	0
D=	8.0	D=	8.0	D=	8.0
8.0	M=	0	99.99	M=	0.0
0	W=	0	W=	0	0
D=	4.4	D=	4.4	D=	4.3
4.4	M=	38.3	99.99	M=	39.0
0	W=	0	W=	0	0
D=	11.0	D=	11.0	D=	14.6
11.0	M=	0.6	99.99	M=	1.4
1.8	M=	0.0	999.0	M=	1.4
W=	0	W=	0	W=	0
D=	10.4	D=	10.4	D=	10.4
10.4	M=	2.7	99.99	M=	2.7
0	W=	0	W=	0	0



Store # 123

27 MILL ST LIBERTY, NY



9.0	0.0	9.0	3.2	0.4	0.0	0.0
\$0.00	\$0.00	\$0.00	\$0.100	\$0.00	\$0.00	\$0.00
D=	D=	D=	D=	D=	D=	D=
0	0	0	0	0	0	0
0	0	0	0	0	0	0
11.3	11.3	11.3	11.3	11.3	11.3	11.3
M=	M=	M=	M=	M=	M=	M=
0.6	0.6	0.6	0.6	0.6	0.6	0.6
\$0.00	\$0.00	\$0.00	\$0.00	\$0.00	\$0.00	\$0.00
0	0	0	0	0	0	0
0	0	0	0	0	0	0

D=	999999	\$0.00	\$0.00	54.0
M=	0.0	\$0.00	76.9	0.4
W=	0	D=	M= 0.3	W=
D=	11.2	9999	9999	0
M=	1.9	9.0	21.0	D=
\$0.00	\$0.00	\$0.00	1.0	\$0.00
0	0	0	0	M= 0.0
D=	19.0	0	0	W= 0

\$0.00	D=	\$0.00	\$0.00
15.8	999999	17.9	17.9
M=	999.0	M=	\$0.00
1.3	M= 0.0	1.1	1.2
W= 0	W= 0	0	0

D=	\$0.00	D=	\$0.00	D=
999999	999.0	83.1	999999	18.8
M=	0.0	M=	999.0	M=
0.6	W=	0.4	M= 0.0	1.1
0	W= 0	0	W= 0	0

\$0.00	\$0.00	\$0.00	\$0.00
D=	D=	D=	D=
110.5	999999	31.5	52.5
M=	999.0	M=	M=
0.2	M= 0.0	0.7	0.4
W= 0	W= 0	0	0



Store # 123

27 MILL ST LIBERTY , NY



Shelf Schematic Report

*Includes all shelves in the planogram

MIRABITO_123 Store # 123 H: 6 ft 6.00 in W: 4 ft 2.00 in D: 2 ft # of segments: 2

Name	Added Items	W: 38.20 in	D: 24.00 in	Avail Space: 0.00 in	Ht Space: 0.00 in		
UPC	Name	Category	HFacings	Orientation	Units	Unit mo...	Actual ...
1820053030	BUD LIGHT 30/12 CAN	PREMIUM	1	Side	1	0.000	0.0
1820061030	BUSCH 30/12 CAN	ECONOMY	1	Side	1	0.000	0.0
1820096721	MICHELOB ULTRA 18/12 CAN	ABOVE PREMIUM	1	Side	1	0.000	0.0
1820000426	BUSCH LIGHT 6/16 CAN	ECONOMY	1	Side	1	0.000	0.0

Name	Deleted Items	W: 30.38 in	D: 24.00 in	Avail Space: 0.00 in	Ht Space: 14.00 in		
UPC	Name	Category	HFacings	Orientation	Units	Unit mo...	Actual ...
1820025003	BUSCH 1/25 CAN	ECONOMY	1	Side	1	1.417	4.9
1820025505	BUD LIGHT LIME STRAW-BER...	ABOVE PREMIUM	1	Side	1	1.640	4.3
3410000355	LITE 1/24 CAN	PREMIUM	1	Side	1	1.450	4.8
3410008716	REDD'S 6/12 BTL	ABOVE PREMIUM	1	Side	1	0.250	28.0
3410057505	LITE 6/12 BTL	PREMIUM	1	Side	1	0.650	10.8
1820006991	MICHELOB ULTRA 12/12 CAN	ABOVE PREMIUM	1	Side	1	0.400	17.5

Name	1_1	W: 25.00 in	D: 24.00 in	Avail Space: 2.84 in	Ht Space: 12.00 in		
UPC	Name	Category	HFacings	Orientation	Units	Unit mo...	Actual ...
3410000387	REDD'S WICKED BLACK CHERR...	ABOVE PREMIUM	1	Front	8	1.240	45.2
6359850101...	MIKES HARDER BLACK CHERR...	ABOVE PREMIUM	1	Front	9	2.375	29.5
63598520032	MIKES HARDER SEASONAL 1/2...	ABOVE PREMIUM	1	Front	8	2.333	24.0
6359852587...	MIKES HARDER LEMONADE 1/1...	ABOVE PREMIUM	1	Front	9	3.160	22.2
84980600116	FOUR LOKO GOLD 1/23.5 CAN (14)	ABOVE PREMIUM	1	Side	8	3.375	16.6
89521600106	FOUR LOKO PEACH 1/23.5 CAN ...	ABOVE PREMIUM	1	Front	8	7.160	8.8
8769200540	ANGRY ORCHARD CRISP APPL...	ABOVE PREMIUM	1	Front	8	0.000	0.0
3410000323	REDD'S WICKED 1/24 CAN	ABOVE PREMIUM	1	Side	8	2.435	23.0

Name	1_2	W: 25.00 in	D: 24.00 in	Avail Space: 2.37 in	Ht Space: 9.00 in		
UPC	Name	Category	HFacings	Orientation	Units	Unit mo...	Actual ...
1820025901	BUD LIGHT 1/25 CAN	PREMIUM	1	Front	8	3.667	15.3
6206705162	LABATT BLUE 1/24 CAN	ABOVE PREMIUM	1	Front	8	0.000	0.0
6206738862	LABATT ICE 1/24 CAN	ABOVE PREMIUM	1	Front	8	0.000	0.0
7199030965	COORS LIGHT 1/24 CAN	PREMIUM	1	Front	8	1.763	31.4
8992460024	YUENGLING LAGER 1/24 CAN	PREMIUM	1	Front	8	0.000	0.0
63598526038	WHITE CLAW BLACK CHERRY ...	ABOVE PREMIUM	1	Side	9	0.000	0.0
1820025000	BUD 1/25 CAN	PREMIUM	2	Front	16	3.720	30.1

Name	1_3	W: 25.00 in	D: 24.00 in	Avail Space: 2.42 in	Ht Space: 10.00 in		
UPC	Name	Category	HFacings	Orientation	Units	Unit mo...	Actual ...
3410000820	MILWAUKEES BEST ICE 1/24 C...	ECONOMY	1	Front	8	4.840	11.6
7031000146	GENESEE 1/24 CAN	ECONOMY	1	Front	8	0.000	0.0
7199010071	COORS BANQUET 1/24 CAN	PREMIUM	1	Front	8	4.160	13.5
7199047712	KEYSTONE ICE 1/24 CAN	ECONOMY	1	Front	8	16.520	3.4
7199048024	KEYSTONE LIGHT 1/24 CAN	ECONOMY	1	Front	8	1.190	47.1
78615000170	STELLA ARTOIS 1/19.2 CAN	ABOVE PREMIUM	1	Front	9	0.000	0.0
1820025910	BUD LIGHT ORANGE 1/25 CAN	ABOVE PREMIUM	1	Front	8	0.000	0.0
1820025013	NATTY DADDY 1/25 CAN	ECONOMY	1	Front	8	15.800	3.5

Name	1_4	W: 25.00 in	D: 24.00 in	Avail Space: 1.52 in	Ht Space: 12.00 in		
UPC	Name	Category	HFacings	Orientation	Units	Unit mo...	Actual ...
1820000456	BUD LIGHT 1/18 BTL (AL)	PREMIUM	3	Front	24	38.280	4.4
8066095641	CORONA 1/24 BTL	ABOVE PREMIUM	1	Front	7	4.240	11.6
8780000034	COORS LIGHT 1/18 BTL	PREMIUM	1	Front	8	8.320	6.7
1820000455	BUD 1/18 BTL	PREMIUM	3	Front	24	38.960	4.3

Name	1_5	W: 25.00 in	D: 24.00 in	Avail Space: 2.24 in	Ht Space: 11.00 in		
UPC	Name	Category	HFacings	Orientation	Units	Unit mo...	Actual ...
8066095605	CORONA 6/12 BTL	ABOVE PREMIUM	1	Side	3	1.763	11.8
3354495042	CORONA PREMIER 12/12 BTL	ABOVE PREMIUM	1	Side	2	0.000	0.0
7289000016	HEINEKEN 12/12 BTL	ABOVE PREMIUM	1	Front	3	1.438	14.6

Name	1_6	W: 25.00 in	D: 25.00 in	Avail Space: 1.27 in	Ht Space: 20.00 in		
UPC	Name	Category	HFacings	Orientation	Units	Unit mo...	Actual ...
6206705150	LABATT BLUE 18/12 CAN	ABOVE PREMIUM	1	Top 90	3	0.000	0.0
8066095615	CORONA 12/12 BTL	ABOVE PREMIUM	1	Side	4	2.680	10.4
8066095715	MODELO ESPECIAL 12/12 CAN	ABOVE PREMIUM	1	Side	4	1.545	18.1
1820096721	MICHELOB ULTRA 18/12 CAN	ABOVE PREMIUM	1	Top 90	3	0.000	0.0

Name: 1_7 W: 25.00 in D: 24.00 in Avail Space: 25.00 in Ht Space: 0.75 in



Shelf Schematic Report

Includes all orders in the program.

Sheet 1 of 1

UIC	Name	Category	IF Range	Oversize	Units	Use	Act.
34493746	Lite 1812 CAN	PREMIUM	1	Side	1	0.00	0.0
65670762	LABATT BLUE 1812 CAN	ABOVE PREM.	1	Side	1	0.00	0.0
60670762	LABATT BLUE 126 CAN	ABOVE PREM.	1	Side	1	0.00	0.0
60670762	LABATT BLUE 126 CAN	ABOVE PREM.	1	Side	1	0.00	0.0
6256911	IMVES HARDEE BLACK C.	ABOVE PREM.	1	Side	1	2.275	29.5
6256912	IMVES HARDEE LEMONA.	ABOVE PREM.	1	Side	1	3.360	22.7
72616616	GENESSEE 126 CAN	ECONOMY	1	Side	1	0.00	0.0
71860328	COORS LIGHT 3612 CAN	PREMIUM	1	Side	1	0.00	0.0
71860329	KEYSTONE LIGHT 1812 CAN	ECONOMY	1	Side	1	0.00	0.0
8621465	FOUR LOW REACH 12.5 L.	ABOVE PREM.	1	Side	1	7.900	88
86848624	YOUNGLING LAGER 126 C.	PREMIUM	1	Side	1	0.00	0.0
71860310	KEYSTONE CE 1912 CAN	ECONOMY	1	Side	1	0.00	0.0
81802504	ANGRY ORCHARD CRISP.	ABOVE PREM.	1	Side	1	0.00	0.0
81802505	STELLA ARTOIS 1812 CAN	ABOVE PREM.	1	Side	1	0.00	0.0
16030058	BLONDIESSER RESERVE.	PREMIUM	1	Side	1	0.00	0.0
16030059	BUD LIGHT ORANGE 12.5 L.	ABOVE PREM.	1	Side	1	0.00	0.0

UIC	Name	Category	IF Range	Oversize	Units	Use	Act.
78671231	FOSTERS 126 4 CAN	ABOVE PREM.	1	Side	1	0.014	11.3
71436688	BOLLING ROCK 126 CAN	ECONOMY	1	Side	1	1.917	3.7
72680011	HENRIKEN 612 8TL	ABOVE PREM.	1	Side	1	0.696	7.6
72680013	HENRIKEN 126 CAN	ABOVE PREM.	1	Side	1	1.993	4.4
76100100	HENRIKEN 126 8TL	ABOVE PREM.	1	Side	1	2.369	3.2
76100105	STELLA ARTOIS 612 8TL	ABOVE PREM.	1	Side	1	0.000	16.0
86860643	CORONA 126 CAN	ABOVE PREM.	1	Side	1	2.260	3.1
86860657	CORONA LIGHT 126 8TL	ABOVE PREM.	1	Side	1	0.033	6.6
71860494	KEYSTONE LIGHT 912 C.	ECONOMY	1	Side	1	0.220	28.0
76100102	THATCHER'S COUNTRY S.S.	ABOVE PREM.	1	Side	1	0.000	0.0
76100107	STEEL RESERVE ALLOY	ECONOMY	1	Side	1	0.000	0.0
81802506	ANGRY ORCHARD ROSE	ABOVE PREM.	1	Side	1	0.000	0.0
8130874	ARNOLD PALMER SPAKE.	ABOVE PREM.	1	Side	1	0.000	0.0
8130874	ARNOLD PALMER SPAKE.	ABOVE PREM.	1	Side	1	0.000	7.3
81802507	NATIONAL CE 1912 CAN	ECONOMY	1	Side	1	0.000	0.0
16030059	BUD LIGHT ORANGE 612	ABOVE PREM.	1	Side	1	0.420	16.3

UIC	Name	Category	IF Range	Oversize	Units	Use	Act.
71860312	KEYSTONE LIGHT 912 CAN	ECONOMY	1	Side	3	0.000	0.0
6256914	WHITE CLAM VARIETY P.	ABOVE PREM.	1	Top	3	0.275	36.6
71860313	KEYSTONE CE 1912 CAN	ECONOMY	1	Side	2	0.000	0.0
71860311	BLUE MOON BELGIAN WH.	ABOVE PREM.	1	Side	3	0.360	34.0

UIC	Name	Category	IF Range	Oversize	Units	Use	Act.
16030058	BUD LIGHT 616 CAN	ECONOMY	1	Side	3	0.000	0.0
34100007	HIGH LIFE 616 CAN	ECONOMY	1	Side	3	1.860	11.2
16030059	BLONDIESSER RESERVE	PREMIUM	1	Front	4	0.000	0.0
16030058	BUD 616 CAN	ECONOMY	1	Side	3	1.800	21.0

UIC	Name	Category	IF Range	Oversize	Units	Use	Act.
16030112	BUD 3612 CAN	ECONOMY	1	Side	2	0.000	0.0
71860319	COORS LIGHT 616 CAN	PREMIUM	1	Side	3	1.100	16.0
16030119	BUD LIGHT 1212 8TL	PREMIUM	1	Front	3	0.000	40.0

UIC	Name	Category	IF Range	Oversize	Units	Use	Act.
34100248	BUD LIGHT 1212 4WR	PREMIUM	1	Top	3	0.000	16.4
34100249	Lite 1812 CAN	PREMIUM	1	Side	2	0.000	0.0
71860604	COORS LIGHT 1212 CAN	PREMIUM	1	Top	3	1.263	16.8
16030624	BUD 612 8TL	PREMIUM	1	Side	3	1.074	17.9

UIC	Name	Category	IF Range	Oversize	Units	Use	Act.
16030181	BUD 1212 CAN	PREMIUM	1	Top	3	1.000	18.8
34100536	Lite 1212 CAN	PREMIUM	1	Top	3	0.000	37.5
71860312	COORS LIGHT 3612 CAN	PREMIUM	1	Side	2	0.000	0.0
16030059	BUD LIGHT 616 CAN	PREMIUM	1	Top	5	6.471	81.1

UIC	Name	Category	IF Range	Oversize	Units	Use	Act.
16030058	BUD LIGHT 3612 CAN	PREMIUM	1	Top	2	0.000	0.0
16030059	BUD LIGHT 612 CAN	PREMIUM	1	Top	3	0.007	37.5
71860317	COORS LIGHT 612 CAN	PREMIUM	1	Top	3	0.500	13.5
16030128	BUD 1812 CAN	PREMIUM	1	Top	3	0.440	52.5

UIC	Name	Category	IF Range	Oversize	Units	Use	Act.
71860317	COORS LIGHT 612 CAN	PREMIUM	1	Top	3	0.500	13.5
71860317	COORS LIGHT 612 CAN	PREMIUM	1	Top	3	0.500	13.5
16030128	BUD 1812 CAN	PREMIUM	1	Top	3	0.440	52.5