

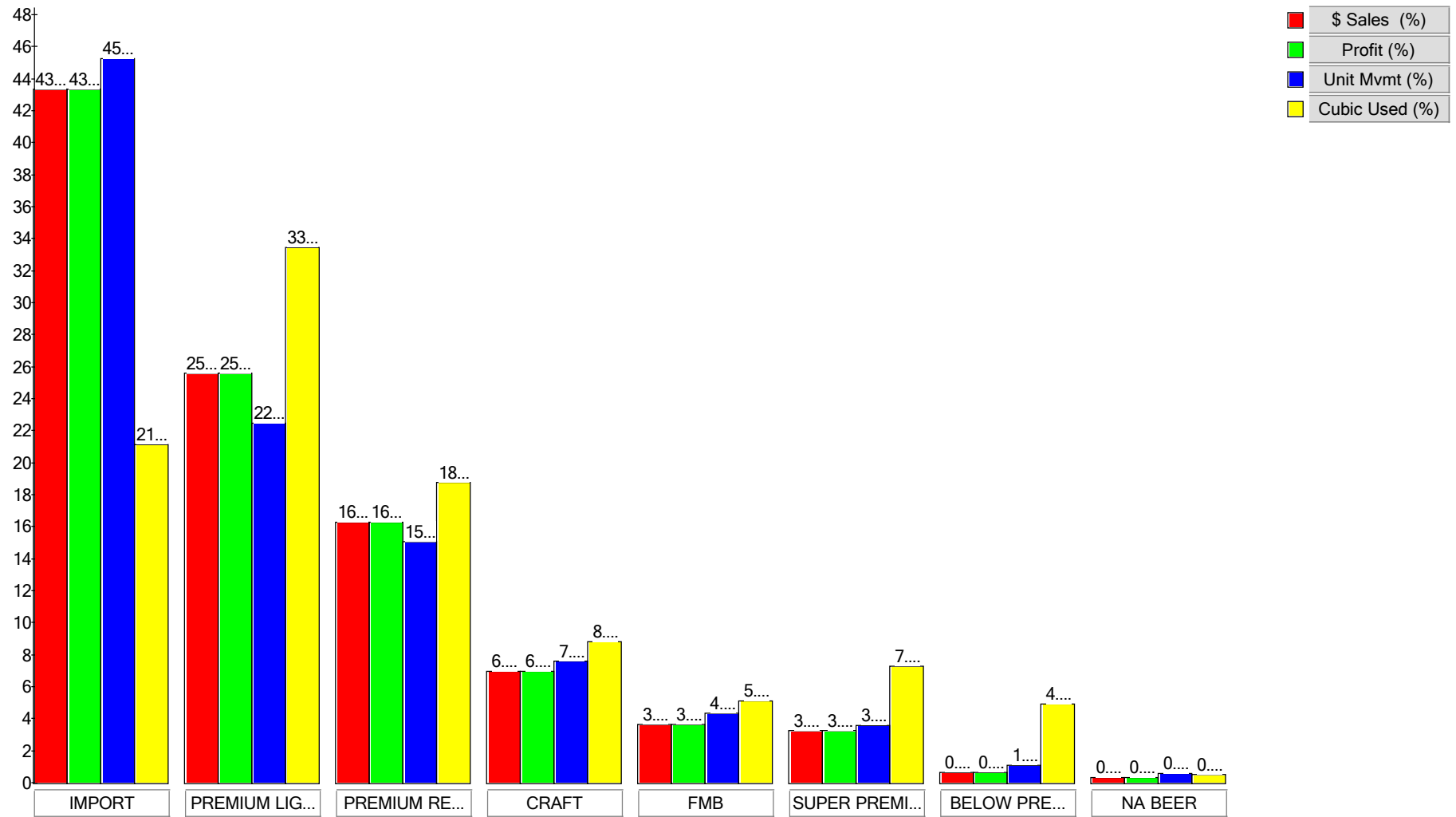


SPRING 2018 Beer Category

Store: 57.psa



Space to Performance Analysis by SubCategory





Subcategory	\$ Sales (%)	Profit (%)	Unit Mvmt ...	Cubic Use...
IMPORT	43.33%	43.33%	45.28%	21.16%
PREMIUM LIGHT	25.59%	25.59%	22.47%	33.47%
PREMIUM REGULAR	16.28%	16.28%	15.10%	18.77%
CRAFT	6.97%	6.97%	7.57%	8.81%
FMB	3.65%	3.65%	4.35%	5.09%
SUPER PREMIUM	3.24%	3.24%	3.56%	7.25%
BELOW PREMIUM	0.62%	0.62%	1.08%	4.91%
NA BEER	0.32%	0.32%	0.60%	0.54%



Added Items

	Manufacturer	Retailer Item #	GTIN	UPC	Name
↑	ANHEUSER-BUSCH IN BEV SA		00018200200816	1820020081	BUDLIGHTLIMEARITAVARIETY12/12.0BTL
↑	ANHEUSER-BUSCH IN BEV SA		00018200200830	1820020083	MICHULTRAGOLD12/12.0BTL
↑	ANHEUSER-BUSCH IN BEV SA	5679091	00018200129896	1820012989	MICHELOBULTRALIMECACTUS6/12BTL
↑	BLUE RIBBON INTER. HOLDIN...		00022100004047	2210000404	PABSTAMERICANPALEALE12/12CAN
↑	BOSTON BEER		00087692006732	8769200673	SAMADAMS766/12CAN
↑	BOSTON BEER COMPANY LTD		00087692006527	8769200652	ANGRYORCHARDKNOTTYPPEAR6BTL
↑	BOSTON BEER COMPANY LTD		00087692006602	8769200660	ANGRYORCHARDROSE6BTL
↑	BOSTON BEER COMPANY LTD		00087692006671	8769200667	SAMUELADAMSREBELANYTIMESESSIO...
↑	BOSTON BEER COMPANY LTD		00087692006787	8769200678	TRULYWILDBERRY6/12CAN
↑	BOSTON BEER COMPANY LTD		00087692751342	8769275134	TWISTEDTEAHALFANDHALF12/12CAN
↑	CONSTELLATION BRANDS INC.		00033544950517	3354495051	CORONAFAMILIAR6/12BTL
↑	CONSTELLATION BRANDS INC.	10255991	00033544950210	3354495021	CORONAPACIFICOVARIETY12/12BTL
↑	CONSTELLATION BRANDS INC.		00033544950418	3354495041	CORONAPREMIER6/12BTL
↑	CONSTELLATION BRANDS INC.		00033544950425	3354495042	CORONAPREMIER12/12BTL
↑	CONSTELLATION BRANDS INC.		00033544950272	3354495027	MODELOESPECIAL18/12BTL
↑	CONSTELLATION BRANDS INC.	3503543	00080660957876	8066095787	MODELONEGRA12/12BTL
↑	MARK ANTHONY INTERNATIO...		00635985260424	63598526042	MIKESHARDVARIETYPACK8/16CAN
↑	MILLERCOORS LLC		00613008748333	61300874833	ARNOLDPALMERSPIKEDHALF&HALF6...
↑	MILLERCOORS LLC		00071990170523	7199017052	BLUEMOONBELGIANWHITE15CAN
↑	MILLERCOORS LLC	9677900	00071990095611	7199009561	BLUEMOONMANGOWHEAT6/12BTL
↑	MILLERCOORS LLC	424986	00071990100742	7199010074	COORSBANQUET12/12BTL
↑	MILLERCOORS LLC		00894137002637	89413700263	CRISPINROSE6/12BTL
↑	MILLERCOORS LLC		00034100516581	3410051658	HENRYSHARDLEMONLIMEBTLGL6PK1...
↑	MILLERCOORS LLC		00034100516642	3410051664	HENRYSHARDSPRKLNGLMNLIME6CAN
↑	MILLERCOORS LLC		00034100516604	3410051660	HENRYSHARDSPARKLINGVARIETY12/1...
↑	MILLERCOORS LLC	4950532	00034100016364	3410001636	HIGHLIFE12/12CAN
↑	MILLERCOORS LLC	10794933	00071990480455	7199048045	KEYSTONELIGHT15/12CAN
↑	MILLERCOORS LLC		00181954001159	18195400115	PERONI6/11.2CAN
↑	MILLERCOORS LLC	8554042	00034100087227	3410008722	REDDS12/12BTL
↑	MILLERCOORS LLC	9310267	00034100003425	3410000342	REDDSWICKED12/10CAN
↑	MILLERCOORS LLC	73031	00072311630214	7231163021	SOL6/12BTL
↑	MILLERCOORS LLC	295242	00072311230216	7231123021	SOL12/12BTL
↑	MILLERCOORS LLC		00034100008406	3410000840	TWOHATSLIME6/16CAN
↑	MILLERCOORS LLC		00034100008413	3410000841	TWOHATSPINEAPPLE6/16OZCAN
↑	SIERRA NEVADA BREWING CO		00083783110104	8378311010	SIERRANEVADAHAZYLITTLETHINGIPA6...



Added Items

↑ SMALL TOWN BREWERY 00092000020980 9200002098 NOTYOURFATHERSFRUITPUNCH6/12B...



Deleted Items

	Manufacturer	Retailer Item #	GTIN	UPC	Avg Weekly Movement	Price
↓	ANHEUSER-BUSCH IN BEV SA	42035	00018200008344	1820000834	0.563	\$7.99
↓	ANHEUSER-BUSCH IN BEV SA	623382	00018200113086	1820011308	1.000	\$14.87
↓	ANHEUSER-BUSCH IN BEV SA	42084	00018200008337	1820000833	1.000	\$7.99
↓	ANHEUSER-BUSCH IN BEV SA	623381	00018200533082	1820053308	0.571	\$14.99
↓	ANHEUSER-BUSCH IN BEV SA	6032891	00018200149917	1820014991	0.000	\$0.00
↓	ANHEUSER-BUSCH IN BEV SA	8013212	00018200189937	1820018993	0.235	\$8.49
↓	ANHEUSER-BUSCH IN BEV SA	9812189	00018200239861	1820023986	0.000	\$0.00
↓	ANHEUSER-BUSCH IN BEV SA	3465044	00018200967214	1820096721	0.000	\$0.00
↓	ANHEUSER-BUSCH IN BEV SA	3812054	00018200967153	1820096715	0.000	\$0.00
↓	ANHEUSER-BUSCH IN BEV SA	4778797	00018200109874	1820010987	0.000	\$0.00
↓	BLUE RIBBON INTER. HOLDIN...	10358268	00092000004010	9200000401	0.000	\$0.00
↓	BLUE RIBBON INTER. HOLDIN...	10775305	00092000014033	9200001403	0.000	\$0.00
↓	BLUE RIBBON INTER. HOLDIN...	45392	00022100001718	2210000171	0.667	\$16.22
↓	BOSTON BEER COMPANY LTD	373684	00087692821021	8769282102	1.000	\$10.99
↓	BOSTON BEER COMPANY LTD		00887151003124	88715100312	0.000	\$0.00
↓	BOSTON BEER COMPANY LTD		00087692003434	8769200343	0.000	\$0.00
↓	BOSTON BEER COMPANY LTD	9094284	00087692001270	8769200127	0.000	\$0.00
↓	BOSTON BEER COMPANY LTD		00087692005063	8769200506	0.000	\$0.00
↓	CONSTELLATION BRANDS INC.	462433	00080660957654	8066095765	0.000	\$0.00
↓	DIAGEO/GUINNESS	716596	00083820104011	8382010401	0.000	\$0.00
↓	DIAGEO/GUINNESS	10627533	00083820181869	8382018186	0.000	\$0.00
↓	DIAGEO/GUINNESS	668103	00082000725183	8200072518	0.750	\$14.99
↓	LAGUNITAS BREWING CO	10522529	00723830300477	72383030047	0.000	\$0.00
↓	LAGUNITAS BREWING CO	8052836	00723830000209	72383000020	0.000	\$0.00
↓	MILLERCOORS LLC		00034100989347	3410098934	0.000	\$0.00
↓	MILLERCOORS LLC		00034100989224	3410098922	0.000	\$0.00
↓	MILLERCOORS LLC	10685179	00034100516215	3410051621	0.667	\$10.49
↓	MILLERCOORS LLC	33161	00034100013066	3410001306	0.000	\$0.00
↓	MILLERCOORS LLC	8716057	00034100786502	3410078650	0.800	\$16.49
↓	MILLERCOORS LLC	291807	00068213031174	6821303117	0.000	\$0.00
↓	MILLERCOORS LLC	9726644	00034100087463	3410008746	1.000	\$9.49
↓	MILLERCOORS LLC	8882287	00034100087302	3410008730	0.000	\$0.00
↓	MILLERCOORS LLC	10597873	00034100989545	3410098954	0.000	\$0.00
↓	MILLERCOORS LLC		00034100087494	3410008749	0.000	\$0.00
↓	MILLERCOORS LLC	10283467	00071990096830	7199009683	0.000	\$0.00



Deleted Items

Name
BUD6/12BTL
BUD18/12BTL
BUDLIGHT6/12BTL
BUDLIGHT18/12BTL
BUDLIGHTLIME6/12BTL
BUDLIGHTPLATINUM6/12BTL
MICHELOBULTRA8/16CAN
MICHELOBULTRA18/12CAN
MICHELOBULTRA24/12CAN
MICHELOBULTRAAMBER12/12BTL
NOTYOURFATHERSVANILLACREAM6/1...
NOTYOURMOMSICETEA6/12BTL
PABST24/12CAN(CUBE)
ANGRYORCHARDCRISPAPPLE6/12BTL
CONEYISLANDHARDORANGECREAM6/...
SAMUELADAMSREBELGRAPEFRUITIPA...
SAMUELADAMSREBELIPA6/12BTL
SAMUELADAMSREBELJUICEDIPA6/12B...
MODELOESPECIAL6/12BTL
GUINNESSDRAUGHTSTOUT6/11.2BTL
GUINNESSRYEPALEALE6/11.2BTL
SMIRNOFFICEORIGINAL12/11.2BTL
LAGUNITAS12THOFNEVERALE12/12CAN
LAGUNITASLITTLESUMPIN6/12BTL
HENRYSHARDCHERRYCOLA6/12BTL
HENRYSHARDGINGERALE6/12BTL
HENRYSHARDGRAPE6/12BTL
HIGHLIFE24/12CAN
LEINIESHANDYSAMPLER12/12CAN
MOLSONCANADIAN12/12BTL
REDDSBLEUBERRY6/12BTL
REDDSPEACH6/12BTL
REDDSWICKEDLIMITED12/10CAN
REDDSWICKEDWATERMELON12/10CAN
SMITHANDFORGE6/12BTL



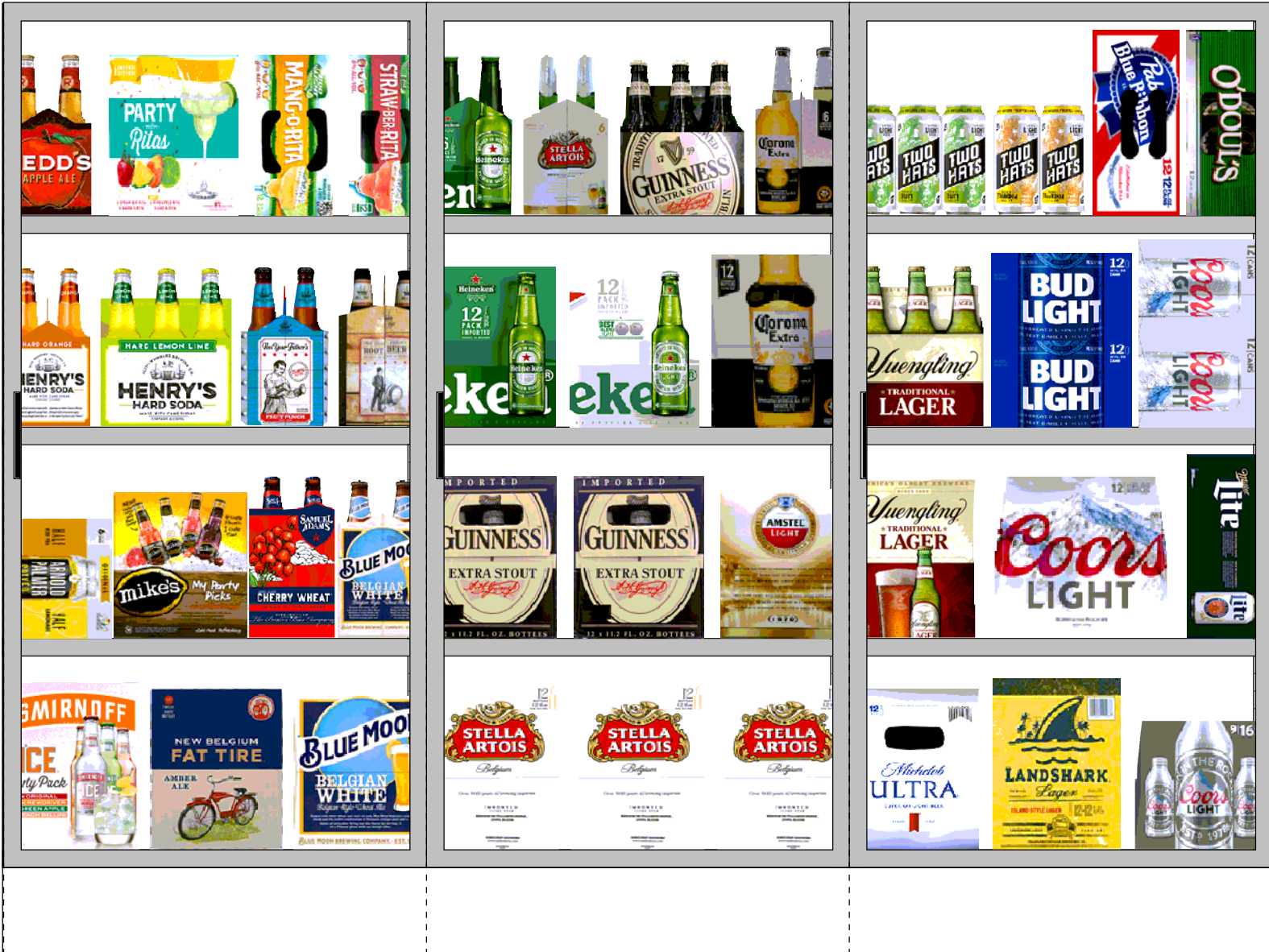
Deleted Items

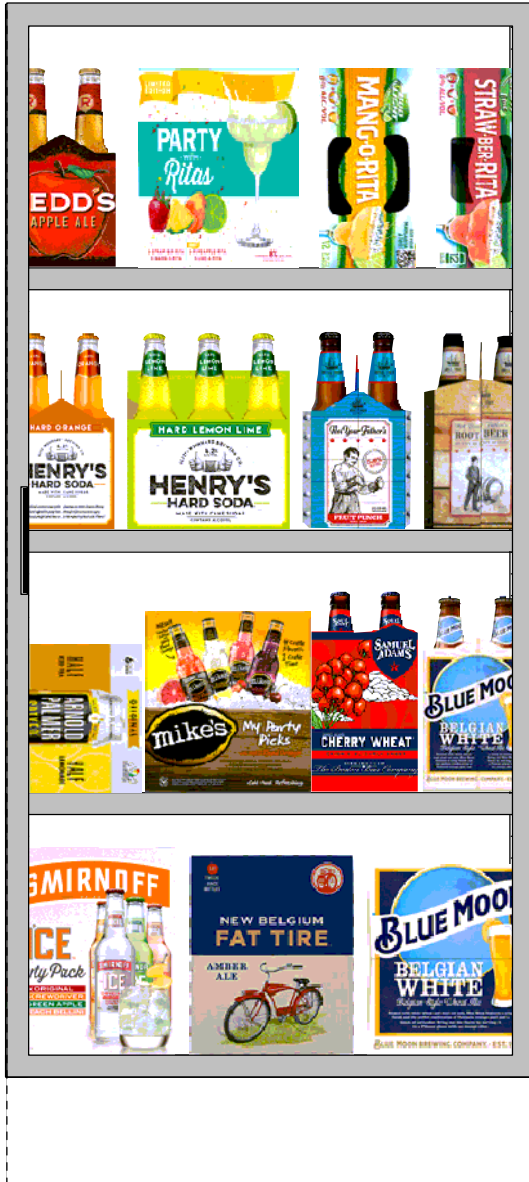
↓	NEW BELGIUM BREWING CM...	10687143	00754527006907	75452700690	0.000	\$0.00
↓	NEW BELGIUM BREWING CM...	7105397	00754527000660	75452700066	0.000	\$0.00
↓	REMAINING DOMESTIC	6125113	00030613000531	3061300053	1.333	\$10.49
↓	REMAINING DOMESTIC		00862737000032	86273700003	0.000	\$0.00
↓	REMAINING DOMESTIC		00862737000018	86273700001	0.000	\$0.00
↓	REMAINING IMPORT	76735	00042572057150	4257205715	0.000	\$0.00
↓	SIERRA NEVADA BREWING CO	42320	00083783375213	8378337521	0.000	\$0.00
↓	SIERRA NEVADA BREWING CO	6517726	00083783331004	8378333100	0.000	\$0.00



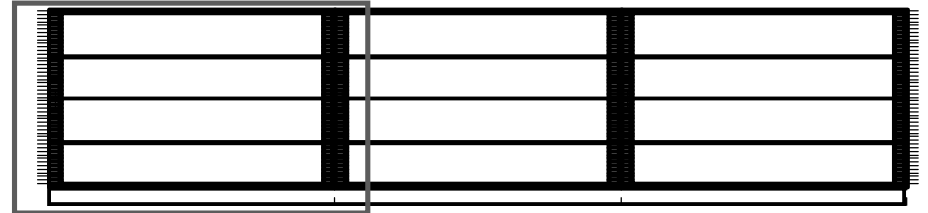
Deleted Items

NEWBELGIUMDAYBLAZER15/12CAN
NEWBELGIUMVOODOORANGERIPA6/1...
BROOKLYNSEASONAL6/12BTL
MONTAUKSESSIONIPA6/12CAN
MONTAUKSUMMER6/12CAN
CLAUSTHALER6BTL
SIERRANEVADAPALEALE6/12BTL
SIERRANEVADATORPEDOIPA6/12BTL

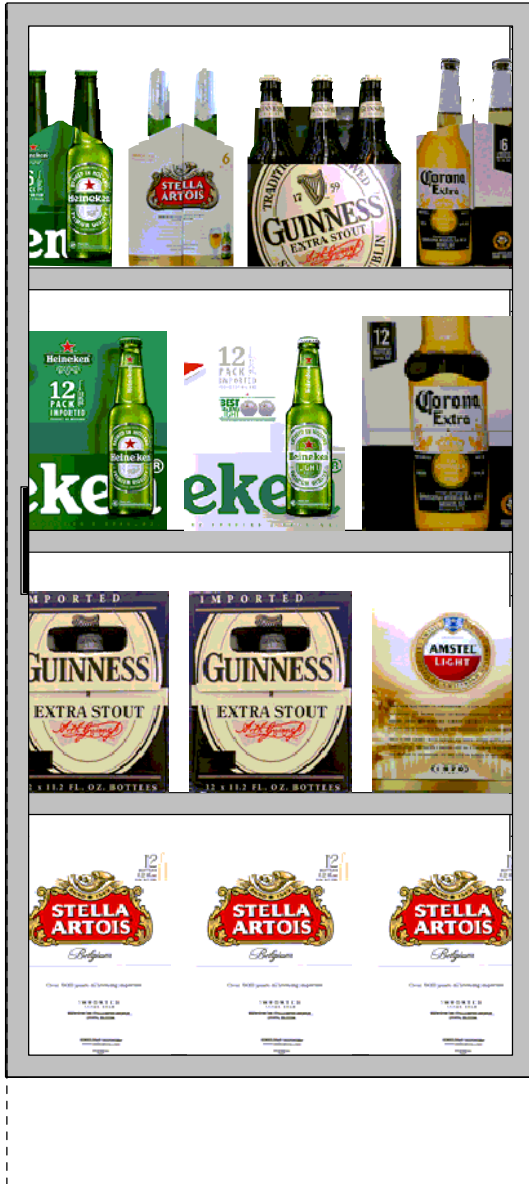




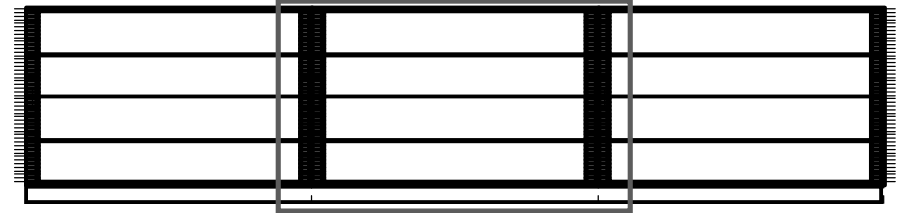
Segment: 1 of 3



Segment: 1	Shelf: 1	W: 24.00... D:22.00 in							
Locat...	Name	RIN	UPC	Fac...	Capa...	MVMT	DOS	Total DOS	ITEM STATUS
1	REDDS 6/12 BTL	8436971	3410008716	1	2	0.143	97.9	97.9	
2	BUD LIGHT LIME A RITA VARIET...		1820020081	1	2	0.000	0.0	0	NEW
3	BUD LIGHT LIME MANG-O-RITA ...	9130048	1820022989	1	3	1.125	18.7	18.7	
4	BUD LIGHT LIME STRAW-BER-R...	8589328	1820020993	1	3	0.833	25.2	42.0	
Segment: 1	Shelf: 2	W: 24.00... D:22.00 in							
Locat...	Name	RIN	UPC	Fac...	Capa...	MVMT	DOS	Total DOS	ITEM STATUS
1	HENRY'S HARD ORANGE 6/12 BTL	10146771	3410098916	1	2	0.667	21.0	21.0	
2	HENRY'S HARD LEMON LIME BT...		3410051658	1	4	0.000	0.0	0	NEW
3	NOT YOUR FATHERS FRUIT PU...		9200002098	1	2	0.000	0.0	0	NEW
4	NOT YOUR FATHERS ROOT BE...	9818433	9200002000	1	2	0.682	20.5	61.6	
Segment: 1	Shelf: 3	W: 24.00... D:22.00 in							
Locat...	Name	RIN	UPC	Fac...	Capa...	MVMT	DOS	Total DOS	ITEM STATUS
1	ARNOLDPALMERSPIKEDHALF&...		613008748...	1	4	0.000	0.0	0	NEW
2	MIKES HARD VARIETY PACK 12/...	4190672	635985129...	1	2	3.625	3.9	11.6	
3	SAMUEL ADAMS CHERRY WHE...	73038	8769227102	1	3	0.583	36.0	60.0	
4	BLUE MOON BELGIAN WHITE 6/...	67062	7199009511	1	2	0.783	17.9	17.9	
Segment: 1	Shelf: 4	W: 24.00... D:22.00 in							
Locat...	Name	RIN	UPC	Fac...	Capa...	MVMT	DOS	Total DOS	ITEM STATUS
1	SMIRNOFF ICE VARIETY PACK 1...	3776409	8200072908	1	2	1.250	11.2	11.2	
2	NEW BELGIUM FAT TIRE 12/12 B...	675596	754527000...	1	2	0.773	18.1	18.1	
3	BLUE MOON BELGIAN WHITE 12...	1022987	7199009516	1	2	4.458	3.1	9.4	CORE



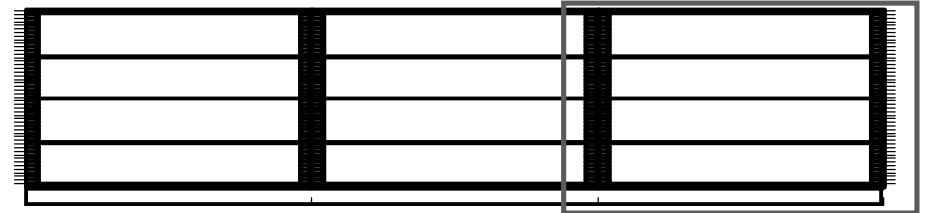
Segment: 2 of 3



Segment: 2		Shelf: 1	W: 24.00	D:22.00 in						
Locat...	Name	RIN	UPC	Fac...	Capa...	MVMT	DOS	Total DOS	ITEM STATUS	
1	HEINEKEN 6/12 BTL	42219	7289000011	1	3	1.000	21.0	21.0		
2	STELLA ARTOIS 6/11.2 BTL	686523	786150000...	1	3	1.174	17.9	41.7		
3	GUINNESS EXTRA STOUT 6/12 B...	45607	8382012393	1	4	1.750	16.0	32.0		
4	CORONA 6/12 BTL	83415	8066095605	1	2	1.458	9.6	9.6		
Segment: 2		Shelf: 2	W: 24.00	D:22.00 in						
Locat...	Name	RIN	UPC	Fac...	Capa...	MVMT	DOS	Total DOS	ITEM STATUS	
1	HEINEKEN 12/12 BTL	42228	7289000016	1	2	38.667	0.4	5.4		
2	HEINEKEN LIGHT 12/12 BTL	4493658	7289000159	1	2	6.458	2.2	10.8		
3	CORONA 12/12 BTL	32758	8066095615	1	2	28.958	0.5	7.7		
Segment: 2		Shelf: 3	W: 24.00	D:22.00 in						
Locat...	Name	RIN	UPC	Fac...	Capa...	MVMT	DOS	Total DOS	ITEM STATUS	
1	GUINNESS EXTRA STOUT 12/12...	6113003	8382023482	2	4	2.750	10.2	10.2		
2	AMSTEL LIGHT 12/12 BTL	32705	7289010016	1	2	2.348	6.0	11.9		
Segment: 2		Shelf: 4	W: 24.00	D:22.00 in						
Locat...	Name	RIN	UPC	Fac...	Capa...	MVMT	DOS	Total DOS	ITEM STATUS	
1	STELLA ARTOIS 12/11.2 BTL	42111	786150000...	3	6	10.565	4.0	9.3		



Segment: 3 of 3



Segment: 3		Shelf: 1		W: 24.00... D:22.00 in						
Locat...	Name	RIN	UPC	Fac...	Capa...	MVMT	DOS	Total DOS	ITEM STATUS	
1	TWO HATS LIME CANAL 6/16 CAN		3410000840	1	4	0.000	0.0	0	NEW	
2	TWO HATS PINEAPPLE CANAL 6...		3410000841	1	2	0.000	0.0	0	NEW	
3	PABST 12/12 CAN	45384	2210000170	1	2	0.737	19.0	57.0		
4	ODOULS NEAR BEER 12/12 CAN	41993	1820079047	1	2	1.565	8.9	62.6		
Segment: 3		Shelf: 2		W: 24.00... D:22.00 in						
Locat...	Name	RIN	UPC	Fac...	Capa...	MVMT	DOS	Total DOS	ITEM STATUS	
1	YUENGLING LAGER 6/12 BTL	77361	8992427891	1	4	0.947	29.6	118.3		
2	BUD LIGHT 12/12 CAN	41879	1820053047	1	4	0.476	58.8	117.6		
3	COORS LIGHT 12/12 CAN	36541	7199000048	1	4	0.913	30.7	122.7	CORE	
Segment: 3		Shelf: 3		W: 24.00... D:22.00 in						
Locat...	Name	RIN	UPC	Fac...	Capa...	MVMT	DOS	Total DOS	ITEM STATUS	
1	YUENGLING LAGER 12/12 BTL	494110	8992427896	1	2	1.292	10.8	65.0		
2	COORS LIGHT 12/12 BTL	706419	7199030069	1	2	0.682	20.5	61.6	CORE	
3	LITE 12/12 CAN	1010204	3410057636	1	2	0.235	59.6	178.7	CORE	
Segment: 3		Shelf: 4		W: 24.00... D:22.00 in						
Locat...	Name	RIN	UPC	Fac...	Capa...	MVMT	DOS	Total DOS	ITEM STATUS	
1	MICHELOB ULTRA 12/12 BTL	799957	1820005990	1	2	2.042	6.9	20.6		
2	LANDSHARK 12/12 BTL	5443936	1820012998	1	2	1.333	10.5	52.5		
3	COORS LIGHT 9/16 BTL (AL)	7327673	7199030104	1	2	0.652	21.5	64.4		



Barcode	Name
0 34100 08716 6	REDDS 6/12 BTL
0 18200 20081 6	BUD LIGHT LIME A RITA VARI...
0 18200 22989 3	BUD LIGHT LIME MANG-O-RIT...
0 18200 20993 2	BUD LIGHT LIME STRAW-BER...
0 34100 98916 3	HENRYS HARD ORANGE 6/12 ...
0 34100 51658 1	HENRYS HARD LEMON LIME ...
0 92000 02098 0	NOT YOUR FATHERS FRUIT P...
0 92000 02000 3	NOT YOUR FATHERS ROOT B...
6 13008 74833 3	ARNOLDPALMERSPIKEDHALF...
6 35985 12998 1	MIKES HARD VARIETY PACK 1...
0 87692 27102 4	SAMUEL ADAMS CHERRY WH...
0 71990 09511 6	BLUE MOON BELGIAN WHITE ...
0 82000 72908 2	SMIRNOFF ICE VARIETY PACK...
7 54527 00024 0	NEW BELGIUM FAT TIRE 12/12...

0 71990 09516 1	BLUE MOON BELGIAN WHITE ...
0 72890 00011 8	HEINEKEN 6/12 BTL
7 86150 00001 4	STELLA ARTOIS 6/11.2 BTL
0 83820 12393 7	GUINNESS EXTRA STOUT 6/12...
0 80660 95605 3	CORONA 6/12 BTL
0 72890 00016 3	HEINEKEN 12/12 BTL
0 72890 00159 7	HEINEKEN LIGHT 12/12 BTL
0 80660 95615 2	CORONA 12/12 BTL
0 83820 23482 4	GUINNESS EXTRA STOUT 12/1...
0 72890 10016 0	AMSTEL LIGHT 12/12 BTL
7 86150 00014 4	STELLA ARTOIS 12/11.2 BTL
0 34100 00840 6	TWO HATS LIME CANAL 6/16 ...
0 34100 00841 3	TWO HATS PINEAPPLE CANA...
0 22100 00170 1	PABST 12/12 CAN

0 18200 79047 8	ODOULS NEAR BEER 12/12 C...
0 89924 27891 7	YUENGLING LAGER 6/12 BTL
0 18200 53047 0	BUD LIGHT 12/12 CAN
0 71990 00048 6	COORS LIGHT 12/12 CAN
0 89924 27896 2	YUENGLING LAGER 12/12 BTL
0 71990 30069 2	COORS LIGHT 12/12 BTL
0 34100 57636 3	LITE 12/12 CAN
0 18200 05990 2	MICHELOB ULTRA 12/12 BTL
0 18200 12998 8	LANDSHARK 12/12 BTL
0 71990 30104 0	COORS LIGHT 9/16 BTL (AL)
0 18200 02992 9	ODOULS AMBER NEAR BEER ...
0 34100 57636 3	LITE 12/12 CAN
0 34100 57505 2	LITE 6/12 BTL
0 18200 00784 2	ODOULS NEAR BEER 6/12 BTL



0 22100 00170 1	PABST 12/12 CAN
0 34100 01636 4	HIGH LIFE 12/12 CAN
0 34100 01636 4	HIGH LIFE 12/12 CAN
0 34100 01636 4	HIGH LIFE 12/12 CAN
0 18200 79047 8	ODOULS NEAR BEER 12/12 C...
0 71990 48045 5	KEYSTONE LIGHT 15/12 CAN
0 34100 01509 1	HIGH LIFE 12/12 BTL
0 18200 79047 8	ODOULS NEAR BEER 12/12 C...
0 34100 01509 1	HIGH LIFE 12/12 BTL
0 34100 01509 1	HIGH LIFE 12/12 BTL
0 34100 57023 1	LITE 9/16 BTL (AL)
0 71990 17028 8	COORS BANQUET 6/12 BTL
0 71990 17028 8	COORS BANQUET 6/12 BTL
0 34100 57256 3	LITE 18/12 BTL

0 34100 57509 0	LITE 12/12 BTL
0 71990 10074 2	COORS BANQUET 12/12 BTL
0 34100 57243 3	LITE 24/12 BTL (HG)
0 34100 57340 9	LITE 18/12 CAN
0 34100 57243 3	LITE 24/12 BTL (HG)
0 34100 57306 5	LITE 24/12 CAN
0 89924 27898 6	YUENGLING LAGER 12/12 CAN
0 89924 27891 7	YUENGLING LAGER 6/12 BTL
0 89924 29386 6	YUENGLING BLACK AND TAN ...
0 89924 23040 3	YUENGLING LIGHT 12/12 BTL
0 89924 27896 2	YUENGLING LAGER 12/12 BTL
0 71990 00047 9	COORS BANQUET 12/12 CAN
0 89924 41003 4	YUENGLING LAGER 24/12 BTL
0 89924 88007 3	YUENGLING LAGER 24/12 CAN

0 89924 88007 3	YUENGLING LAGER 24/12 CAN
0 71990 17038 7	COORS BANQUET 18/12 BTL (...)
0 71990 17038 7	COORS BANQUET 18/12 BTL (...)
0 89924 41003 4	YUENGLING LAGER 24/12 BTL
0 89924 27896 2	YUENGLING LAGER 12/12 BTL
0 82488 12345 7	BECKS 6/12 BTL
0 83820 12360 9	GUINNESS DRAUGHT STOUT ...
0 83820 12393 7	GUINNESS EXTRA STOUT 6/12...
7 86150 00001 4	STELLA ARTOIS 6/11.2 BTL
1 81954 00115 9	PERONI 6/11.2 CAN
1 81954 00002 2	PERONI 6/11.2 BTL
8 94137 00263 7	CRISPIN ROSE 6/12 BTL
0 72890 00159 7	HEINEKEN LIGHT 12/12 BTL
0 83820 13894 8	RED STRIPE LAGER 12/11.2 BTL



0 82488 12300 6	BECKS 12/12 BTL
0 72890 10016 0	AMSTEL LIGHT 12/12 BTL
0 80660 95757 9	MODELO ESPECIAL 12/12 BTL
0 72890 00159 7	HEINEKEN LIGHT 12/12 BTL
0 72890 00016 3	HEINEKEN 12/12 BTL
0 33544 95027 2	MODELO ESPECIAL 18/12 BTL
0 80660 95787 6	MODELO NEGRA 12/12 BTL
0 80660 95408 0	CORONA 24/7 BTL
7 86150 00014 4	STELLA ARTOIS 12/11.2 BTL
0 72890 00016 3	HEINEKEN 12/12 BTL
0 87692 00652 7	ANGRYORCHARDPEAR6BTL
0 87692 00660 2	ANGRYORCHARDROSE6BTL
0 34100 51664 2	HENRYS HARD SPARKLING L...
0 34100 51660 4	HENRYS HARD SPARKLING V...

0 87692 00678 7	TRULY WILD BERRY 6/12 CAN
6 35985 10062 1	MIKES HARD LEMONADE 6/11....
0 33544 95051 7	CORONA FAMILIAR 6/12 BTL
0 33544 95041 8	CORONA PREMIER 6/12 BTL
0 80660 95695 4	CORONA 12/12 CAN
0 80660 95625 1	CORONA LIGHT 6/12 BTL
0 80660 95401 1	CORONA 6/7 BTL
0 72311 63021 4	SOL 6/12 BTL
0 80660 95615 2	CORONA 12/12 BTL
0 80660 95615 2	CORONA 12/12 BTL
0 33544 95042 5	CORONA PREMIER 12/12 BTL
0 72311 23021 6	SOL 12/12 BTL
0 80660 95675 6	CORONA LIGHT 12/12 BTL
6 35985 06744 3	MIKES HARD BLACK CHERRY ...

6 35985 26042 4	MIKES HARD VARIETY PACK 8...
0 92000 02000 3	NOT YOUR FATHERS ROOT B...
0 92000 02013 3	NOT YOUR FATHERS GINGER ...
8 87151 00213 4	CONEY ISLAND HARD ROOT ...
0 34100 00342 5	REDD'S WICKED 12/10 CAN
0 72311 33140 1	DOS EQUIS AMBER 12/12 BTL
0 72311 33140 1	DOS EQUIS AMBER 12/12 BTL
0 83783 11010 4	SIERRANEVADAHAZYLITTLET...
0 71990 09532 1	BLUE MOON SEASONAL 6/12 ...
0 71990 09561 1	BLUE MOON MANGO WHEAT ...
0 18200 15981 7	SHOCK TOP BELGIAN WHITE ...
0 33544 95021 0	CORONA PACIFICO VARIETY 1...
0 72311 23012 4	DOS EQUIS 12/12 BTL
0 71990 17052 3	BLUE MOON BELGIAN WHITE ...



0 80660 95615 2	CORONA 12/12 BTL
0 80660 95680 0	CORONA 18/12 BTL
0 71990 09516 1	BLUE MOON BELGIAN WHITE ...
0 18200 19987 5	BUD LIGHT LIME LIME-A-RITA ...
0 18200 20993 2	BUD LIGHT LIME STRAW-BER...
6 13008 74833 3	ARNOLDPALMERSPIKEDHALF...
0 87692 75134 2	TWISTED TEA HALF AND HAL...
0 99999 99962 4	MANAGER OPTION 6/12 BTL
0 99999 99962 4	MANAGER OPTION 6/12 BTL
0 34100 51605 5	LEINIES SEASONAL SHANDY ...
0 22100 00404 7	PABST AMERICAN PALE ALE 1...
0 87692 27102 4	SAMUEL ADAMS CHERRY WH...
8 62737 00000 1	MONTAUK DRIFTWOOD 6/12 C...
0 34100 08722 7	REDDS 12/12 BTL

0 99999 99962 4	MANAGER OPTION 6/12 BTL
0 99999 99962 4	MANAGER OPTION 6/12 BTL
0 71990 09554 3	BLUE MOON BREWMASTER V...
0 87692 00673 2	SAM ADAMS 76 6/12 CAN
0 87692 00667 1	SAMUEL ADAMS REBEL ANYT...
6 35985 12998 1	MIKES HARD VARIETY PACK 1...
0 99999 00113 6	MANAGER OPTION 12/12 BTL
0 87692 01103 3	SAMUEL ADAMS SEASONAL 1...
0 87692 29103 9	SAMUEL ADAMS VARIETY PA...
0 87692 10014 0	SAMUEL ADAMS BOSTON LA...
0 99999 00113 6	MANAGER OPTION 12/12 BTL
0 18200 05989 6	MICHELOB ULTRA 6/12 BTL
0 18200 12989 6	MICHELOB ULTRA LIME CACT...
0 18200 06991 8	MICHELOB ULTRA 12/12 CAN

0 18200 20083 0	MICH ULTRA GOLD 12/12.0 BTL
0 82488 12300 6	BECKS 12/12 BTL
0 71990 76400 5	KILLIANS IRISH RED 12/12 BTL
0 18200 18992 0	BUD LIGHT PLATINUM 12/12 B...
0 18200 14990 0	BUD LIGHT LIME 12/12 BTL
0 18200 05990 2	MICHELOB ULTRA 12/12 BTL
0 18200 12998 8	LANDSHARK 12/12 BTL
0 18200 18992 0	BUD LIGHT PLATINUM 12/12 B...
0 18200 14990 0	BUD LIGHT LIME 12/12 BTL
0 18200 96624 8	MICHELOB ULTRA 18/12 BTL
0 18200 00769 9	BUD LIGHT 12/12 BTL
0 18200 20998 7	BUD LIGHT 8/16 BTL (AL)
0 18200 20998 7	BUD LIGHT 8/16 BTL (AL)
0 18200 53349 5	BUD LIGHT 24/12 BTL (HG)



0 18200 53349 5	BUD LIGHT 24/12 BTL (HG)
0 18200 12998 8	LANDSHARK 12/12 BTL
0 18200 53168 2	BUD LIGHT 24/12 CAN
0 18200 53349 5	BUD LIGHT 24/12 BTL (HG)
0 18200 00106 2	BUD LIGHT 6/12 CAN
0 18200 53047 0	BUD LIGHT 12/12 CAN
0 18200 53218 4	BUD LIGHT 18/12 CAN
0 18200 53030 2	BUD LIGHT 30/12 CAN
0 18200 53030 2	BUD LIGHT 30/12 CAN
0 18200 53030 2	BUD LIGHT 30/12 CAN
0 18200 53030 2	BUD LIGHT 30/12 CAN
0 18200 11218 8	BUD 18/12 CAN
0 18200 00771 2	BUD 12/12 BTL
0 18200 00771 2	BUD 12/12 BTL
0 18200 11030 6	BUD 30/12 CAN

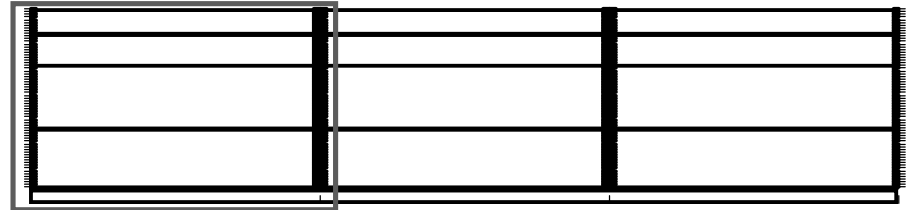
0 18200 11349 9	BUD 24/12 BTL (HG)
0 18200 11349 9	BUD 24/12 BTL (HG)
0 18200 11349 9	BUD 24/12 BTL (HG)
0 18200 11349 9	BUD 24/12 BTL (HG)
0 18200 00771 2	BUD 12/12 BTL
0 71990 30069 2	COORS LIGHT 12/12 BTL
0 71990 30017 3	COORS LIGHT 18/12 CAN
0 71990 31600 6	COORS LIGHT 24/12 CAN
0 18200 11168 6	BUD 24/12 CAN
0 71990 30079 1	COORS LIGHT 24/12 BTL (HG)
0 18200 11349 9	BUD 24/12 BTL (HG)
0 71990 30079 1	COORS LIGHT 24/12 BTL (HG)
0 71990 30079 1	COORS LIGHT 24/12 BTL (HG)
0 71990 30079 1	COORS LIGHT 24/12 BTL (HG)
0 71990 00048 6	COORS LIGHT 12/12 CAN

0 71990 30104 0	COORS LIGHT 9/16 BTL (AL)
0 71990 00008 0	COORS LIGHT 6/12 CAN
0 71990 30005 0	COORS LIGHT 6/12 BTL
0 71990 30030 2	COORS LIGHT 30/12 CAN
0 71990 30030 2	COORS LIGHT 30/12 CAN
0 71990 30030 2	COORS LIGHT 30/12 CAN
0 71990 30079 1	COORS LIGHT 24/12 BTL (HG)
0 71990 30030 2	COORS LIGHT 30/12 CAN
0 71990 30079 1	COORS LIGHT 24/12 BTL (HG)
0 71990 30079 1	COORS LIGHT 24/12 BTL (HG)
0 71990 30079 1	COORS LIGHT 24/12 BTL (HG)
0 71990 30078 4	COORS LIGHT 18/12 BTL

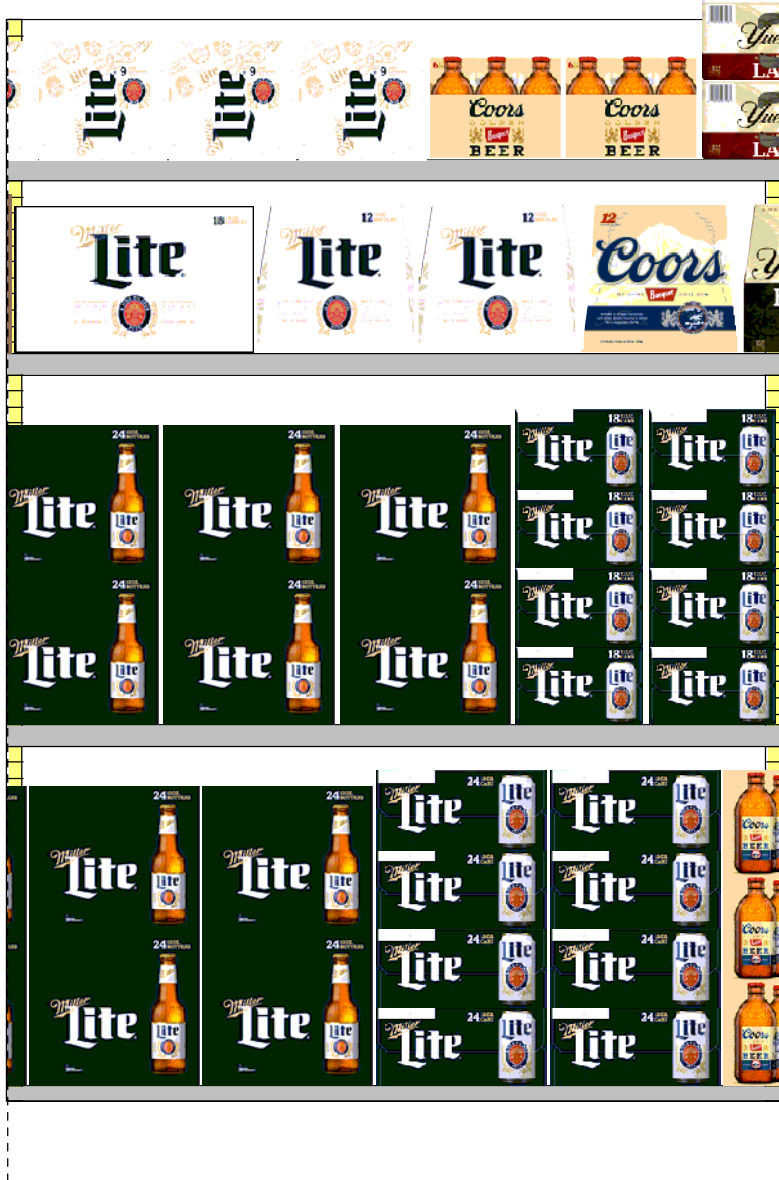




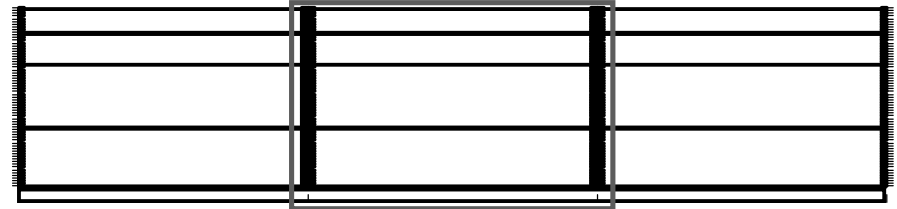
Segment: 1 of 3



Segment: 2	Shelf: 1	W: 144.0	D:20.00 in						
Locat...	Name	RIN	UPC	Fac...	Capa...	MVMT	DOS	Total DOS	ITEM STATUS
1	ODOULS AMBER NEAR BEER 6/...	184276	1820002992	2	6	0.571	73.6	73.6	
2	LITE 12/12 CAN	1010204	3410057636	1	4	0.235	119.1	178.7	CORE
3	LITE 6/12 BTL	234389	3410057506	2	8	0.286	195.8	195.8	
Segment: 2	Shelf: 2	W: 144.0	D:20.00 in						
Locat...	Name	RIN	UPC	Fac...	Capa...	MVMT	DOS	Total DOS	ITEM STATUS
1	ODOULS NEAR BEER 6/12 BTL	41972	1820000784	1	3	1.125	18.7	18.7	
2	PABST 12/12 CAN	45384	2210000170	1	4	0.737	38.0	57.0	
3	HIGH LIFE 12/12 CAN	4950532	3410001636	3	10	0.000	0.0	0	CORE
4	HIGH LIFE 12/12 CAN	4950532	3410001636	3	10	0.000	0.0	0	CORE
5	HIGH LIFE 12/12 CAN	4950532	3410001636	3	10	0.000	0.0	0	CORE
Segment: 2	Shelf: 3	W: 144.0	D:20.00 in						
Locat...	Name	RIN	UPC	Fac...	Capa...	MVMT	DOS	Total DOS	ITEM STATUS
1	ODOULS NEAR BEER 12/12 CAN	41993	1820079047	2	12	1.565	53.7	62.6	
2	KEYSTONE LIGHT 15/12 CAN	10794933	7199048045	1	4	0.000	0.0	0	CORE
3	HIGH LIFE 12/12 BTL	228393	3410001509	7	28	2.333	84.0	84.0	CORE
Segment: 2	Shelf: 4	W: 144.0	D:24.00 in						
Locat...	Name	RIN	UPC	Fac...	Capa...	MVMT	DOS	Total DOS	ITEM STATUS
1	ODOULS NEAR BEER 12/12 CAN	41993	1820079047	2	12	1.565	53.7	62.6	
2	HIGH LIFE 12/12 BTL	228393	3410001509	7	28	2.333	84.0	84.0	CORE
3	HIGH LIFE 12/12 BTL	228393	3410001509	7	28	2.333	84.0	84.0	CORE



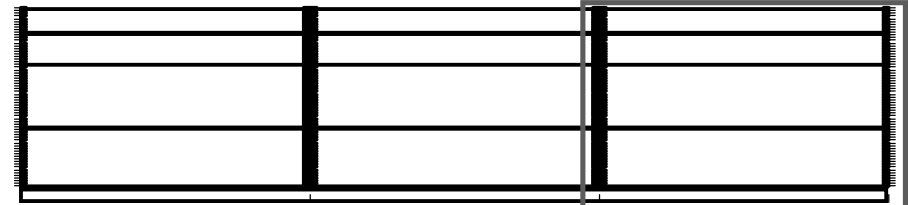
Segment: 2 of 3



Segment: 2		Shelf: 1		W: 144.0... D:20.00 in					
Locat...	Name	RIN	UPC	Fac...	Capa...	MVMT	DOS	Total DOS	ITEM STATUS
1	LITE 9/16 BTL (AL)	6354677	3410057023	4	8	0.474	118.1	118.1	
2	COORS BANQUET 6/12 BTL	36340	7199017028	2	6	0.368	114.1	114.1	PROTECT
3	COORS BANQUET 6/12 BTL	36340	7199017028	2	6	0.368	114.1	114.1	PROTECT
Segment: 2		Shelf: 2		W: 144.0... D:20.00 in					
Locat...	Name	RIN	UPC	Fac...	Capa...	MVMT	DOS	Total DOS	ITEM STATUS
1	LITE 18/12 BTL	259201	3410057256	1	2	0.200	70.0	70.0	
2	LITE 12/12 BTL	365302	3410057509	2	4	0.682	41.1	41.1	CORE
3	COORS BANQUET 12/12 BTL	424986	7199010074	1	2	1.000	14.0	14.0	CORE
Segment: 2		Shelf: 3		W: 144.0... D:20.00 in					
Locat...	Name	RIN	UPC	Fac...	Capa...	MVMT	DOS	Total DOS	ITEM STATUS
1	LITE 24/12 BTL (HG)	430660	3410057243	6	12	3.542	23.7	23.7	
2	LITE 18/12 CAN	98600	3410057340	2	8	0.238	235.3	235.3	
Segment: 2		Shelf: 4		W: 144.0... D:24.00 in					
Locat...	Name	RIN	UPC	Fac...	Capa...	MVMT	DOS	Total DOS	ITEM STATUS
1	LITE 24/12 BTL (HG)	430660	3410057243	6	12	3.542	23.7	23.7	
2	LITE 24/12 CAN	41797	3410057306	2	8	1.348	41.5	41.5	



Segment: 3 of 3



Segment: 2		Shelf: 1		W: 144.0... D:20.00 in						
Locat...	Name	RIN	UPC	Fac...	Capa...	MVMT	DOS	Total DOS	ITEM STATUS	
1	YUENGLING LAGER 12/12 CAN	532432	8992427898	2	8	0.600	93.3	93.3		
2	YUENGLING LAGER 6/12 BTL	77361	8992427891	4	12	0.947	88.7	118.3		
Segment: 2		Shelf: 2		W: 144.0... D:20.00 in						
Locat...	Name	RIN	UPC	Fac...	Capa...	MVMT	DOS	Total DOS	ITEM STATUS	
1	YUENGLING BLACK AND TAN 12...	494120	8992429386	1	2	1.000	14.0	14.0		
2	YUENGLING LIGHT 12/12 BTL	2130468	8992423040	2	4	0.571	49.0	49.0		
3	YUENGLING LAGER 12/12 BTL	494110	8992427896	3	10	1.292	54.2	65.0		
Segment: 2		Shelf: 3		W: 144.0... D:20.00 in						
Locat...	Name	RIN	UPC	Fac...	Capa...	MVMT	DOS	Total DOS	ITEM STATUS	
1	COORS BANQUET 12/12 CAN	36347	7199000047	1	8	0.000	0.0	0	CORE	
2	YUENGLING LAGER 24/12 BTL	751418	8992441003	2	6	1.000	42.0	42.0		
3	YUENGLING LAGER 24/12 CAN	123679	8992488007	2	8	1.292	43.3	43.3		
4	YUENGLING LAGER 24/12 CAN	123679	8992488007	2	8	1.292	43.3	43.3		
Segment: 2		Shelf: 4		W: 144.0... D:24.00 in						
Locat...	Name	RIN	UPC	Fac...	Capa...	MVMT	DOS	Total DOS	ITEM STATUS	
1	COORS BANQUET 18/12 BTL (ST...	750535	7199017038	2	9	2.833	22.2	22.2		
2	COORS BANQUET 18/12 BTL (ST...	750535	7199017038	2	9	2.833	22.2	22.2		
3	YUENGLING LAGER 24/12 BTL	751418	8992441003	2	6	1.000	42.0	42.0		
4	YUENGLING LAGER 12/12 BTL	494110	8992427896	3	10	1.292	54.2	65.0		

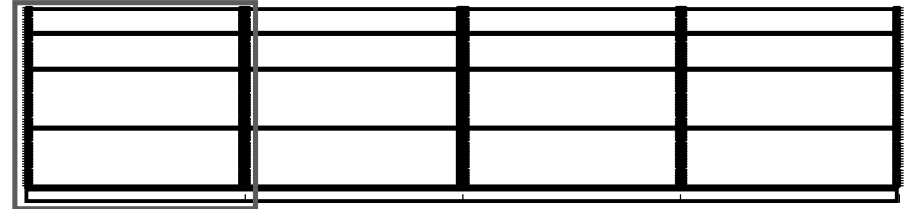
16' Back Wall

Craft Flex Space





Segment: 1 of 4

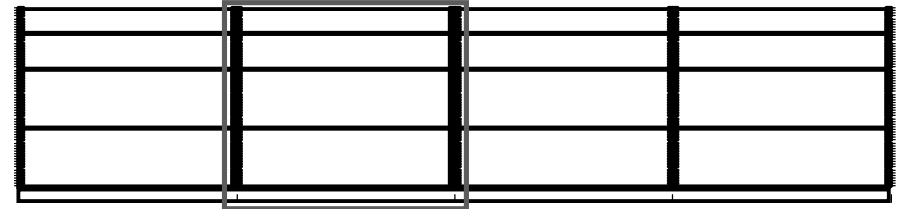


Segment: 2	Shelf: 1	W: 192.0...	D:20.00 in						
Locals...	Name	RIN	UPC	Fac...	Capa...	MVMT	DOS	Total DOS	ITEM STATUS
1	BECKS 6/12 BTL	36245	8248812345	1	4	0.500	56.0	56.0	
2	GUINNESS DRAUGHT STOUT 4/...	45603	8382012360	1	3	1.042	20.2	20.2	
3	GUINNESS EXTRA STOUT 6/12 B...	45607	8382012393	1	4	1.750	16.0	32.0	
4	STELLA ARTOIS 6/11.2 BTL	689523	786150000...	1	4	1.174	23.9	41.7	
5	PERONI 6/11.2 CAN		181954001...	1	8	0.000	0.0	0	NEW
6	PERONI 6/11.2 BTL	201628	181954000...	1	4	1.000	28.0	28.0	
7	CRISPIN ROSE 6/12 BTL		894137002...	1	4	0.000	0.0	0	NEW
Segment: 2	Shelf: 2	W: 192.0...	D:20.00 in						
Locals...	Name	RIN	UPC	Fac...	Capa...	MVMT	DOS	Total DOS	ITEM STATUS
1	HEINEKEN LIGHT 12/12 BTL	4493668	7289000159	3	8	6.458	8.7	10.8	
2	RED STRIPE LAGER 12/11.2 BTL	537490	8382013894	1	1	1.125	6.2	6.2	
3	BECKS 12/12 BTL	76212	8248812300	1	2	1.130	12.4	37.2	
4	AMSTEL LIGHT 12/12 BTL	32705	7289010016	1	2	2.348	6.0	11.9	
5	MODELO ESPECIAL 12/12 BTL	3465395	8066095757	2	4	3.826	7.3	7.3	
Segment: 2	Shelf: 3	W: 192.0...	D:20.00 in						
Locals...	Name	RIN	UPC	Fac...	Capa...	MVMT	DOS	Total DOS	ITEM STATUS
1	HEINEKEN LIGHT 12/12 BTL	4493668	7289000159	3	8	6.458	8.7	10.8	
2	HEINEKEN 12/12 BTL	42228	7289000016	7	28	38.667	5.1	5.4	
3	MODELO ESPECIAL 18/12 BTL	NA_RIN	3354495027	1	2	0.000	0.0	0	NEW
4	MODELO NEGRA 12/12 BTL	3503543	8066095787	1	2	1.773	7.9	7.9	
5	CORONA 24/7 BTL	4979546	8066095408	3	6	5.625	7.5	7.5	
Segment: 2	Shelf: 4	W: 192.0...	D:24.00 in						
Locals...	Name	RIN	UPC	Fac...	Capa...	MVMT	DOS	Total DOS	ITEM STATUS
1	STELLA ARTOIS 12/11.2 BTL	42111	786150000...	2	8	10.565	5.3	9.3	
2	HEINEKEN 12/12 BTL	42228	7289000016	7	28	38.667	5.1	5.4	

16' Back



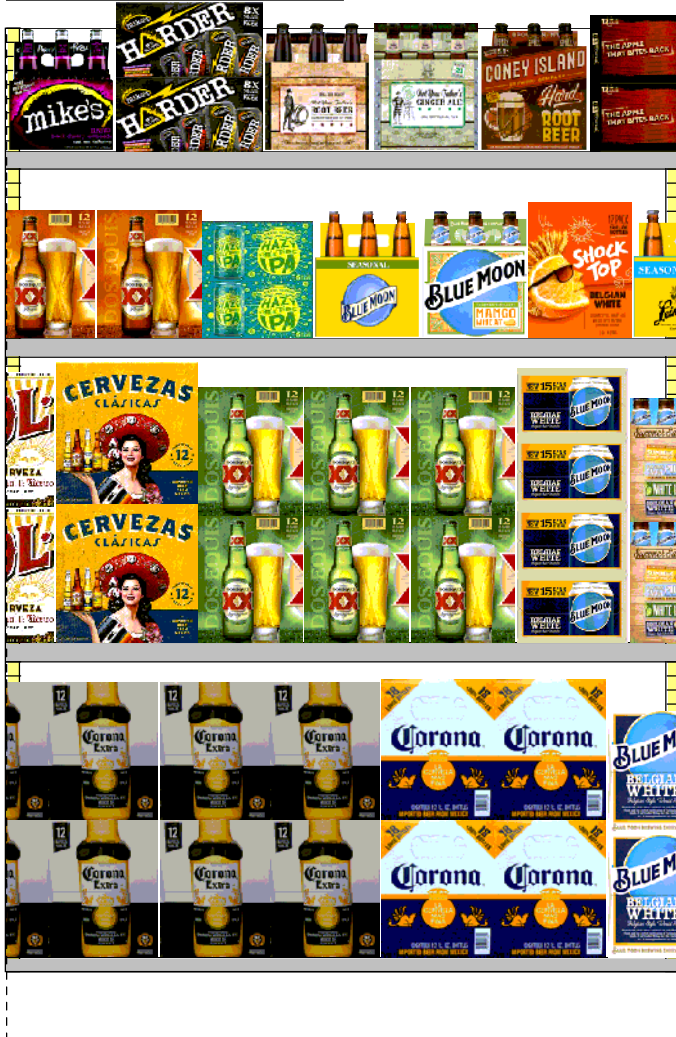
Segment: 2 of 4



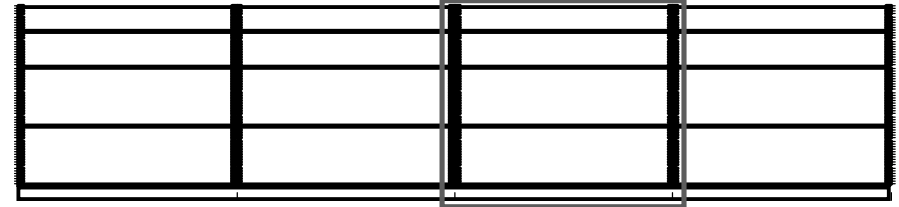
Segment: 2		Shelf: 1	W: 192.0...	D:20.00 in					
Local...	Name	RIN	UPC	Fac...	Capa...	MVMT	DOS	Total DOS	ITEM STATUS
1	ANGRYORCHARDPEAR6BTL		8769200652	1	4	0.000	0.0	0	NEW
2	ANGRYORCHARDROSE6BTL		8769200660	1	4	0.000	0.0	0	NEW
3	HENRY'S HARD SPARKLING LE...		3410051664	1	4	0.000	0.0	0	NEW
4	HENRY'S HARD SPARKLING VA...		3410051660	1	4	0.000	0.0	0	NEW
5	TRULY WILD BERRY 6/12 CAN		8769200678	1	8	0.000	0.0	0	NEW
6	MIKES HARD LEMONADE 6/11.2 ...	371122	635985100...	1	4	0.409		68.5	
Segment: 2		Shelf: 2	W: 192.0...	D:20.00 in					
Local...	Name	RIN	UPC	Fac...	Capa...	MVMT	DOS	Total DOS	ITEM STATUS
1	CORONA FAMILIAR 6/12 BTL		3354495051	1	3	0.000	0.0	0	NEW
2	CORONA PREMIER 6/12 BTL	10844402	3354495041	1	3	0.000	0.0	0	NEW
3	CORONA 12/12 CAN	5896490	8066095695	1	2	1.542	9.1	9.1	
4	CORONA LIGHT 6/12 BTL	78555	8066095625	1	2	0.696	20.1	20.1	
5	CORONA 6/7 BTL	137010	8066095401	1	3	0.750	28.0	28.0	
6	SOL 6/12 BTL	73031	7231163021	1	4	0.000	0.0	0	NEW
Segment: 2		Shelf: 3	W: 192.0...	D:20.00 in					
Local...	Name	RIN	UPC	Fac...	Capa...	MVMT	DOS	Total DOS	ITEM STATUS
1	CORONA 12/12 BTL	32758	8066095615	8	30	28.958	7.3	7.7	
2	CORONA 12/12 BTL	32758	8066095615	8	30	28.958	7.3	7.7	
3	CORONA PREMIER 12/12 BTL	10969690	3354495042	1	4	0.000	0.0	0	NEW
4	SOL 12/12 BTL	295242	7231123021	1	4	0.000	0.0	0	NEW
Segment: 2		Shelf: 4	W: 192.0...	D:24.00 in					
Local...	Name	RIN	UPC	Fac...	Capa...	MVMT	DOS	Total DOS	ITEM STATUS
1	CORONA LIGHT 12/12 BTL	32762	8066095675	2	8	3.625	15.4	15.4	



k Wall



Segment: 3 of 4



Segment: 2	Shelf: 1	W: 192.0...	D:20.00 in							
Local...	Name	RIN	UPC	Fac...	Capa...	MVMT	DOS	Total DOS	ITEM STATUS	
1	MIKES HARD BLACK CHERRY L...	4159862	635985067...	1	4	0.389	72.0	72.0		
2	MIKES HARD VARIETY PACK 8/1...		635985260...	1	4	0.000	0.0	0	NEW	
3	NOT YOUR FATHERS ROOT BE...	9818433	920002000	1	4	0.682	41.1	61.6		
4	NOT YOUR FATHERS GINGER A...	10070711	920002013	1	4	1.000	28.0	28.0		
5	CONEY ISLAND HARD ROOT BE...	9885577	887151002...	1	4	0.667	42.0	42.0		
6	REDD'S WICKED 12/10 CAN	9310267	3410000342	1	4	0.348	80.5	80.5	CORE	

Segment: 2	Shelf: 2	W: 192.0...	D:20.00 in							
Local...	Name	RIN	UPC	Fac...	Capa...	MVMT	DOS	Total DOS	ITEM STATUS	
1	DOS EQUIS AMBER 12/12 BTL	143507	7231133140	2	2	1.684	8.3	8.3		
2	DOS EQUIS AMBER 12/12 BTL	143507	7231133140	2	2	1.684	8.3	8.3		
3	SIERRANEVADAHAZYLITTLETH...		8378311010	1	6	0.000	0.0	0	NEW	
4	BLUE MOON SEASONAL 6/12 BTL	2115242	7199009532	1	4	0.619	45.2	45.2		
5	BLUE MOON MANGO WHEAT 6/...	9677900	7199009561	1	4	1.750	16.0	16.0	NEW	
6	SHOCK TOP BELGIAN WHITE 12/...	6479233	1820015981	1	2	0.591	23.7	23.7		

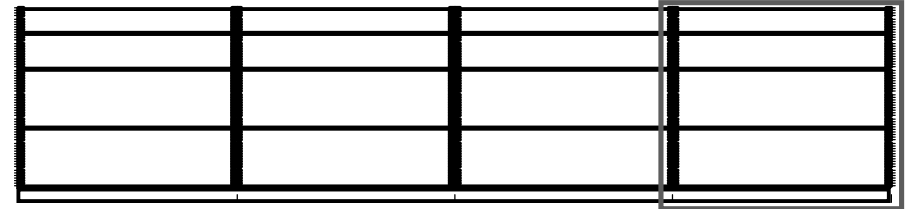
Segment: 2	Shelf: 3	W: 192.0...	D:20.00 in							
Local...	Name	RIN	UPC	Fac...	Capa...	MVMT	DOS	Total DOS	ITEM STATUS	
1	CORONA PACIFICO VARIETY 12/...	1025991	3354495021	1	4	0.000	0.0	0	NEW	
2	DOS EQUIS 12/12 BTL	234745	7231123012	3	6	4.684	9.0	9.0		
3	BLUE MOON BELGIAN WHITE 15...		7199017052	1	4	0.000	0.0	0	NEW	

Segment: 2	Shelf: 4	W: 192.0...	D:24.00 in							
Local...	Name	RIN	UPC	Fac...	Capa...	MVMT	DOS	Total DOS	ITEM STATUS	
1	CORONA 12/12 BTL	32758	8066095615	8	30	28.958	7.3	7.7		
2	CORONA 18/12 BTL	6511044	8066095680	2	4	4.375	6.4	6.4		
3	BLUE MOON BELGIAN WHITE 12...	1022987	7199009516	1	4	4.458	6.3	9.4	CORE	



Craft Flex Space

Segment: 4 of 4

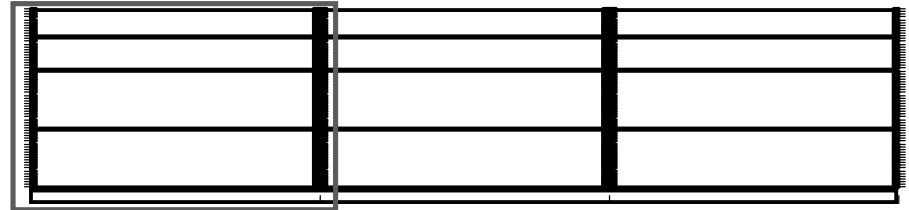


Segment: 2		Shelf: 1	W: 192.0... D:20.00 in							
Local...	Name	RIN	UPC	Fac...	Capa...	MVMT	DOS	Total DOS	ITEM STATUS	
1	BUD LIGHT LIME-LIME-A-RITA 12...	8146969	1820019887	1	2	0.591	23.7	23.7		
2	BUD LIGHT LIME STRAW-BER-R...	8589328	1820020993	1	2	0.833	16.8	42.0		
3	ARNOLDPALMERSPIKEDHALF&...		613008748...	1	6	0.000	0.0	0	NEW	
4	TWISTED TEA HALF AND HALF ...	11025048	8769275134	1	4	0.000	0.0	0	NEW	
5	MANAGER OPTION 6/12 BTL		9999999962	6	16	0.000	0.0	0		
6	MANAGER OPTION 6/12 BTL		9999999962	6	16	0.000	0.0	0		
Segment: 2		Shelf: 2	W: 192.0... D:20.00 in							
Local...	Name	RIN	UPC	Fac...	Capa...	MVMT	DOS	Total DOS	ITEM STATUS	
1	LEINIES SEASONAL SHANDY 6/1...	4497954	3410051605	1	3	1.000	21.0	21.0		
2	PABST AMERICAN PALE ALE 12/...		2210000404	1	1	0.000	0.0	0	NEW	
3	SAMUEL ADAMS CHERRY WHE...	73038	8769227102	1	2	0.583	24.0	60.0		
4	MONTAUK DRIFTWOOD 6/12 CAN	10968371	862737000...	1	4	1.000	28.0	28.0		
5	REDD'S 12/12 BTL	8554042	3410008722	1	1	0.625	11.2	11.2	CORE	
6	MANAGER OPTION 6/12 BTL		9999999962	6	16	0.000	0.0	0		
7	MANAGER OPTION 6/12 BTL		9999999962	6	16	0.000	0.0	0		
Segment: 2		Shelf: 3	W: 192.0... D:20.00 in							
Local...	Name	RIN	UPC	Fac...	Capa...	MVMT	DOS	Total DOS	ITEM STATUS	
1	BLUE MOON BREWMASTER VA...	6371531	7199009554	1	4	1.682	16.6	16.6		
2	SAM ADAMS 76 6/12 CAN		8769200673	1	8	0.000	0.0	0	NEW	
3	SAMUEL ADAMS REBEL ANYTIM...		8769200667	1	4	0.000	0.0	0	NEW	
4	MIKES HARD VARIETY PACK 12/...	4190672	635985129...	1	4	3.625	7.7	11.6		
5	MANAGER OPTION 12/12 BTL		9999900113	6	18	0.000	0.0	0		
Segment: 2		Shelf: 4	W: 192.0... D:24.00 in							
Local...	Name	RIN	UPC	Fac...	Capa...	MVMT	DOS	Total DOS	ITEM STATUS	
1	SAMUEL ADAMS SEASONAL 12/1...	160623	8769201103	1	4	2.696	10.4	10.4		
2	SAMUEL ADAMS VARIETY PACK...	73023	8769229103	1	4	2.130	13.1	13.1		
3	SAMUEL ADAMS BOSTON LAGE...	198053	8769210014	1	4	2.870	9.8	9.8		
4	MANAGER OPTION 12/12 BTL		9999900113	6	18	0.000	0.0	0		





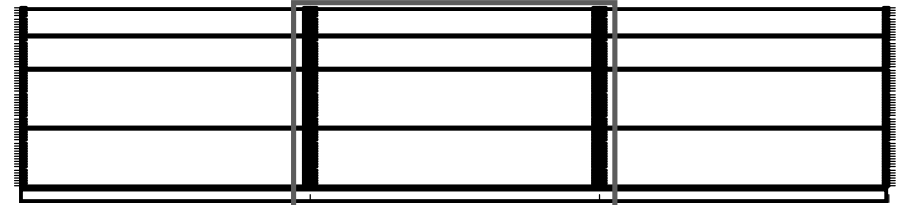
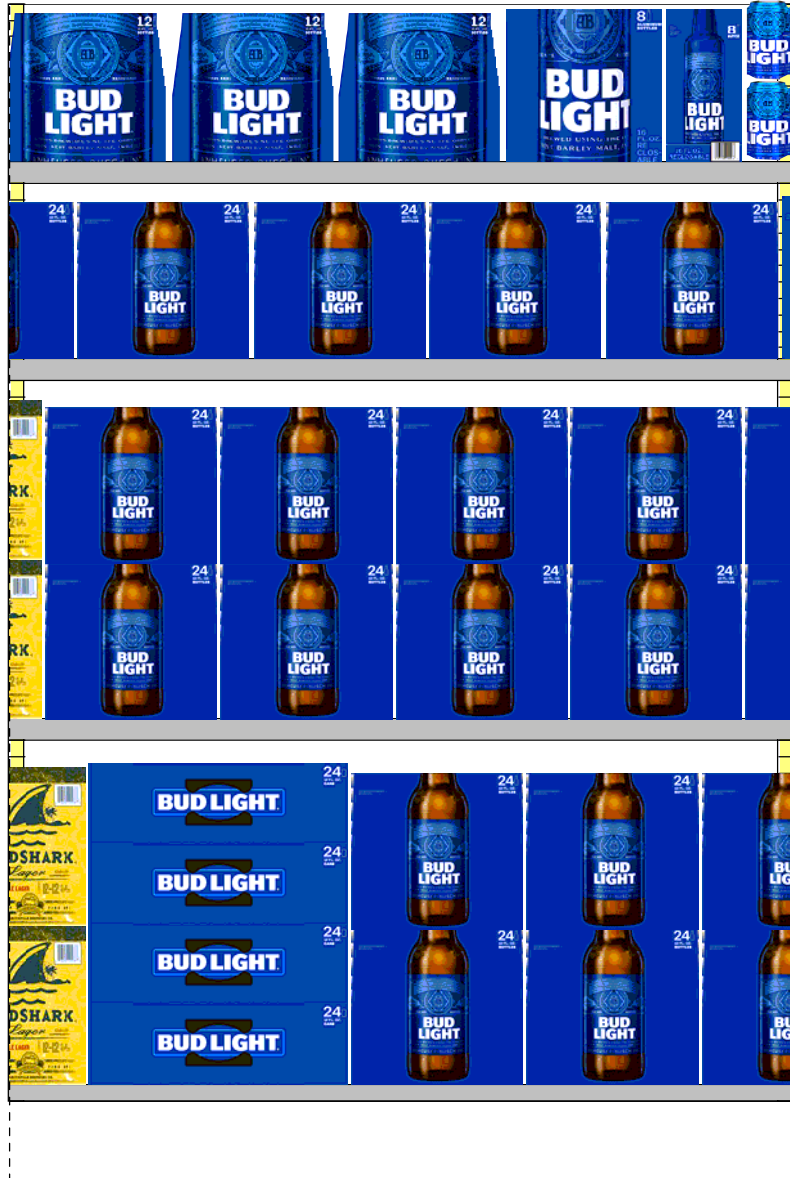
Segment: 1 of 3



Segment: 2		Shelf: 1		W: 144.0... D:20.00 in						
Locat...	Name	RIN	UPC	Fac...	Capa...	MVMT	DOS	Total DOS	ITEM STATUS	
1	MICHELOB ULTRA 6/12 BTL	799955	1820005989	3	9	0.500	126.0	126.0		
2	MICHELOB ULTRA LIME CACTU...	5679091	1820012989	3	12	0.000	0.0	0	NEW	
Segment: 2		Shelf: 2		W: 144.0... D:20.00 in						
Locat...	Name	RIN	UPC	Fac...	Capa...	MVMT	DOS	Total DOS	ITEM STATUS	
1	MICHELOB ULTRA 12/12 CAN	3465058	1820006991	3	9	2.000	31.5	31.5		
2	MICH ULTRA GOLD 12/12.0 BTL		1820020083	2	4	0.000	0.0	0	NEW	
Segment: 2		Shelf: 3		W: 144.0... D:20.00 in						
Locat...	Name	RIN	UPC	Fac...	Capa...	MVMT	DOS	Total DOS	ITEM STATUS	
1	BECKS 12/12 BTL	76212	8248812300	1	4	1.130	24.8	37.2		
2	KILLIANS IRISH RED 12/12 BTL	76228	7199076400	1	4	0.550	50.9	50.9		
3	BUD LIGHT PLATINUM 12/12 BTL	8013231	1820018992	2	8	0.391	143.2	143.2		
4	BUD LIGHT LIME 12/12 BTL	6032802	1820014990	2	8	1.000	56.0	56.0		
5	MICHELOB ULTRA 12/12 BTL	799957	1820005990	1	4	2.042	13.7	20.6		
6	LANDSHARK 12/12 BTL	5443936	1820012998	2	8	1.333	42.0	52.5		
Segment: 2		Shelf: 4		W: 144.0... D:24.00 in						
Locat...	Name	RIN	UPC	Fac...	Capa...	MVMT	DOS	Total DOS	ITEM STATUS	
1	BUD LIGHT PLATINUM 12/12 BTL	8013231	1820018992	2	8	0.391	143.2	143.2		
2	BUD LIGHT LIME 12/12 BTL	6032802	1820014990	2	8	1.000	56.0	56.0		
3	MICHELOB ULTRA 18/12 BTL	4542888	1820096624	4	8	2.826	19.8	19.8		



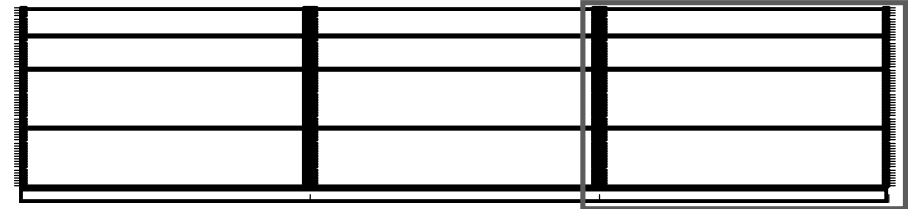
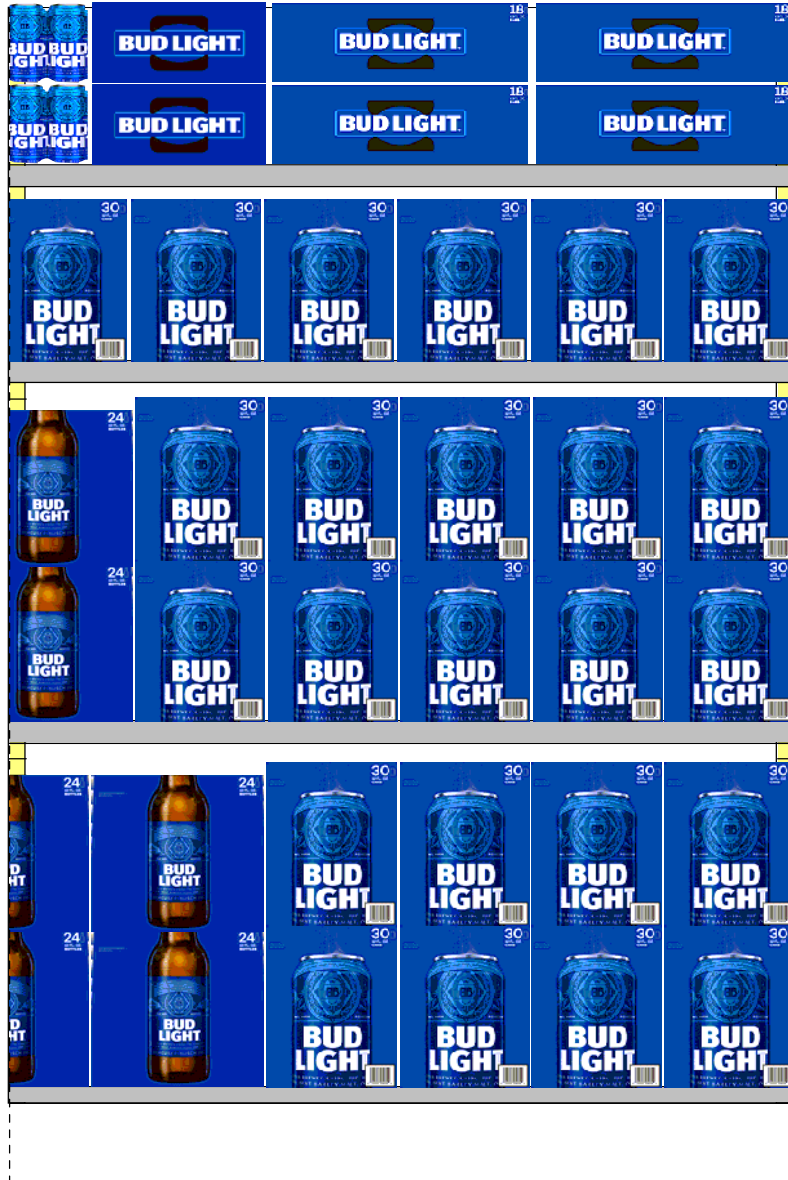
Segment: 2 of 3



Segment: 2		Shelf: 1	W: 144.0...	D:20.00 in					
Locat...	Name	RIN	UPC	Fac...	Capa...	MVMT	DOS	Total DOS	ITEM STATUS
1	BUD LIGHT 12/12 BTL	238518	1820000769	3	6	0.652	64.4	64.4	
2	BUD LIGHT 8/16 BTL (AL)	8961184	1820020998	2	6	0.231	181.8	181.8	
3	BUD LIGHT 8/16 BTL (AL)	8961184	1820020998	2	6	0.231	181.8	181.8	
Segment: 2		Shelf: 2	W: 144.0...	D:20.00 in					
Locat...	Name	RIN	UPC	Fac...	Capa...	MVMT	DOS	Total DOS	ITEM STATUS
1	BUD LIGHT 24/12 BTL (HG)	615368	1820053349	14	23	9.833	16.4	16.4	
Segment: 2		Shelf: 3	W: 144.0...	D:20.00 in					
Locat...	Name	RIN	UPC	Fac...	Capa...	MVMT	DOS	Total DOS	ITEM STATUS
1	BUD LIGHT 24/12 BTL (HG)	615368	1820053349	14	23	9.833	16.4	16.4	
Segment: 2		Shelf: 4	W: 144.0...	D:24.00 in					
Locat...	Name	RIN	UPC	Fac...	Capa...	MVMT	DOS	Total DOS	ITEM STATUS
1	LANDSHARK 12/12 BTL	5443936	1820012998	2	8	1.333	42.0	52.5	
2	BUD LIGHT 24/12 CAN	42123	1820053168	1	8	1.042	53.7	53.7	
3	BUD LIGHT 24/12 BTL (HG)	615368	1820053349	14	23	9.833	16.4	16.4	

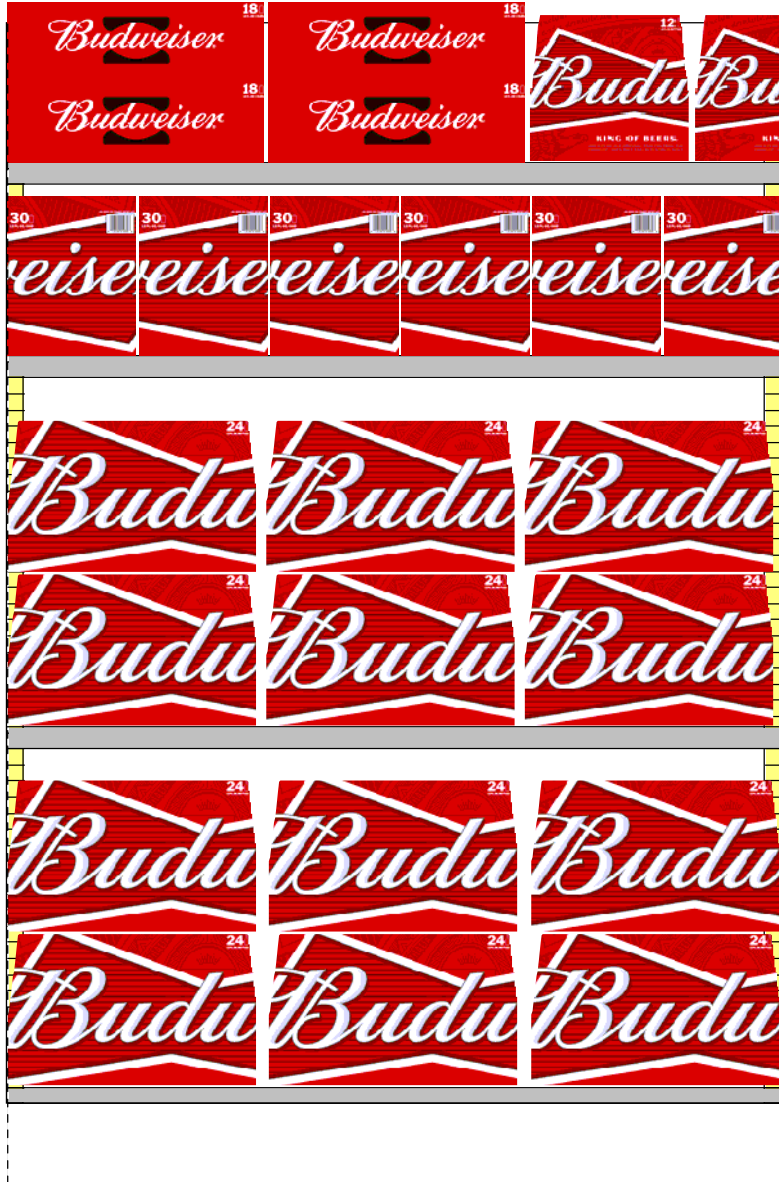


Segment: 3 of 3

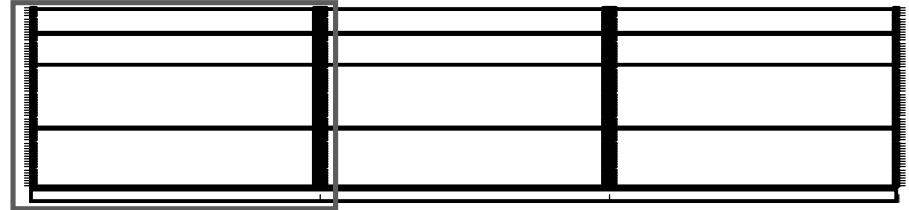


Segment: 2		Shelf: 1		W: 144.0... D:20.00 in						
Locat...	Name	RIN	UPC	Fact...	Capa...	MVMT	DOS	Total DOS	ITEM STATUS	
1	BUD LIGHT 6/12 CAN	41725	182000106	1	6	0.143	293.7	293.7		
2	BUD LIGHT 12/12 CAN	41879	1820053047	1	4	0.476	58.8	117.6		
3	BUD LIGHT 18/12 CAN	41947	1820053218	2	8	0.611	91.7	91.7		
Segment: 2		Shelf: 2		W: 144.0... D:20.00 in						
Locat...	Name	RIN	UPC	Fact...	Capa...	MVMT	DOS	Total DOS	ITEM STATUS	
1	BUD LIGHT 30/12 CAN	123292	1820053030	15	24	8.458	19.9	19.9		
Segment: 2		Shelf: 3		W: 144.0... D:20.00 in						
Locat...	Name	RIN	UPC	Fact...	Capa...	MVMT	DOS	Total DOS	ITEM STATUS	
1	BUD LIGHT 30/12 CAN	123292	1820053030	15	24	8.458	19.9	19.9		
Segment: 2		Shelf: 4		W: 144.0... D:24.00 in						
Locat...	Name	RIN	UPC	Fact...	Capa...	MVMT	DOS	Total DOS	ITEM STATUS	
1	BUD LIGHT 30/12 CAN	123292	1820053030	15	24	8.458	19.9	19.9		





Segment: 1 of 3

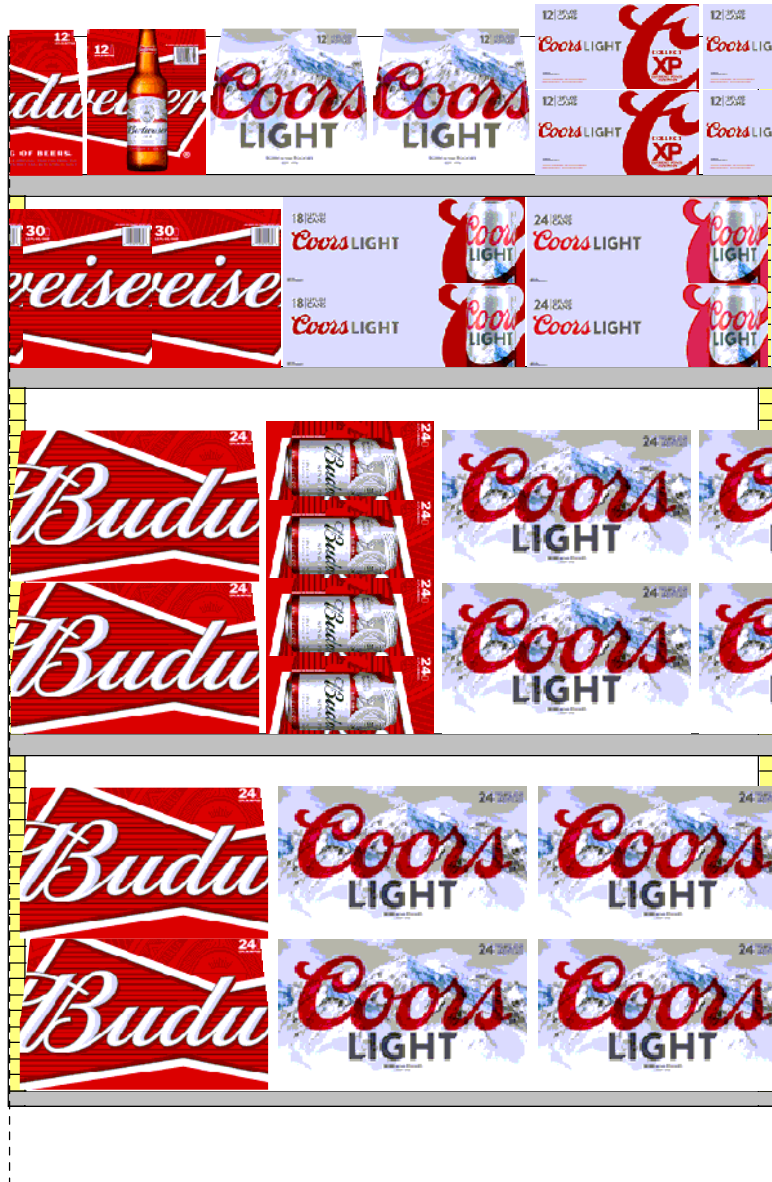


Segment: 2 Shelf: 1 W: 144.0... D:20.00 in									
Locat...	Name	RIN	UPC	Fac...	Capa...	MVMT	DOS	Total DOS	ITEM STATUS
1	BUD 18/12 CAN	41899	1820011218	2	8	0.368	152.2	152.2	
2	BUD 12/12 BTL	238509	1820000771	3	6	0.579	72.5	72.5	
3	BUD 12/12 BTL	238509	1820000771	3	6	0.579	72.5	72.5	

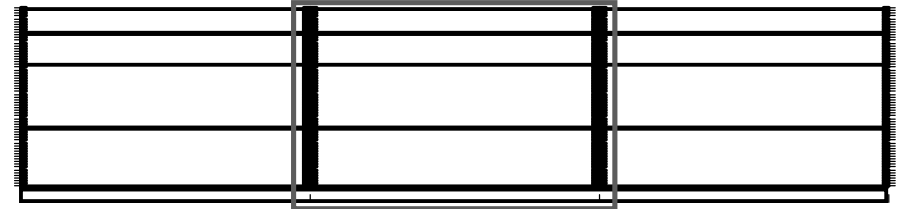
Segment: 2 Shelf: 2 W: 144.0... D:20.00 in									
Locat...	Name	RIN	UPC	Fac...	Capa...	MVMT	DOS	Total DOS	ITEM STATUS
1	BUD 30/12 CAN	122917	1820011030	8	8	6.875	8.1	8.1	

Segment: 2 Shelf: 3 W: 144.0... D:20.00 in									
Locat...	Name	RIN	UPC	Fac...	Capa...	MVMT	DOS	Total DOS	ITEM STATUS
1	BUD 24/12 BTL (HG)	612489	1820011349	8	24	20.958	8.0	8.0	

Segment: 2 Shelf: 4 W: 144.0... D:24.00 in									
Locat...	Name	RIN	UPC	Fac...	Capa...	MVMT	DOS	Total DOS	ITEM STATUS
1	BUD 24/12 BTL (HG)	612489	1820011349	8	24	20.958	8.0	8.0	
2	BUD 24/12 BTL (HG)	612489	1820011349	8	24	20.958	8.0	8.0	
3	BUD 24/12 BTL (HG)	612489	1820011349	8	24	20.958	8.0	8.0	



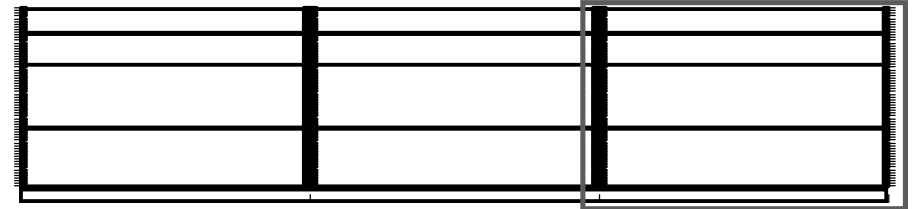
Segment: 2 of 3



Segment: 2		Shelf: 1	W: 144.0...	D:20.00 in						
Locat...	Name	RIN	UPC	Fac...	Capa...	MVMT	DOS	Total DOS	ITEM STATUS	
1	BUD 12/12 BTL	238509	1820000771	3	6	0.579	72.5	72.5		
2	COORS LIGHT 12/12 BTL	706419	7199030069	2	4	0.682	41.1	61.6	CORE	
Segment: 2		Shelf: 2	W: 144.0...	D:20.00 in						
Locat...	Name	RIN	UPC	Fac...	Capa...	MVMT	DOS	Total DOS	ITEM STATUS	
1	COORS LIGHT 18/12 CAN	122973	7199030017	1	4	0.400	70.0	70.0		
2	COORS LIGHT 24/12 CAN	36556	7199031600	2	4	3.208	8.7	8.7		
Segment: 2		Shelf: 3	W: 144.0...	D:20.00 in						
Locat...	Name	RIN	UPC	Fac...	Capa...	MVMT	DOS	Total DOS	ITEM STATUS	
1	BUD 24/12 CAN	41903	1820011168	1	4	2.167	12.9	12.9		
2	COORS LIGHT 24/12 BTL (HG)	4681645	7199030079	8	22	21.250	7.2	7.2		
Segment: 2		Shelf: 4	W: 144.0...	D:24.00 in						
Locat...	Name	RIN	UPC	Fac...	Capa...	MVMT	DOS	Total DOS	ITEM STATUS	
1	BUD 24/12 BTL (HG)	612489	1820011349	8	24	20.958	8.0	8.0		
2	COORS LIGHT 24/12 BTL (HG)	4681645	7199030079	8	22	21.250	7.2	7.2		
3	COORS LIGHT 24/12 BTL (HG)	4681645	7199030079	8	22	21.250	7.2	7.2		



Segment: 3 of 3



Segment: 2		Shelf: 1		W: 144.0... D:20.00 in						
Locat...	Name	RIN	UPC	Fac...	Capa...	MVMT	DOS	Total DOS	ITEM STATUS	
1	COORS LIGHT 12/12 CAN	36541	7199000048	3	12	0.913	92.0	122.7	CORE	
2	COORS LIGHT 9/16 BTL (AL)	7327673	7199030104	2	4	0.652	42.9	64.4		
3	COORS LIGHT 6/12 CAN	36511	7199000008	1	6	0.750	56.0	56.0		
4	COORS LIGHT 6/12 BTL	36533	7199030005	1	4	0.391	71.6	71.6		
Segment: 2		Shelf: 2		W: 144.0... D:20.00 in						
Locat...	Name	RIN	UPC	Fac...	Capa...	MVMT	DOS	Total DOS	ITEM STATUS	
1	COORS LIGHT 30/12 CAN	123783	7199030030	5	13	6.348	14.3	14.3		
2	COORS LIGHT 30/12 CAN	123783	7199030030	5	13	6.348	14.3	14.3		
3	COORS LIGHT 30/12 CAN	123783	7199030030	5	13	6.348	14.3	14.3		
Segment: 2		Shelf: 3		W: 144.0... D:20.00 in						
Locat...	Name	RIN	UPC	Fac...	Capa...	MVMT	DOS	Total DOS	ITEM STATUS	
1	COORS LIGHT 24/12 BTL (HG)	4681645	7199030079	8	22	21.250	7.2	7.2		
2	COORS LIGHT 30/12 CAN	123783	7199030030	5	13	6.348	14.3	14.3		
Segment: 2		Shelf: 4		W: 144.0... D:24.00 in						
Locat...	Name	RIN	UPC	Fac...	Capa...	MVMT	DOS	Total DOS	ITEM STATUS	
1	COORS LIGHT 24/12 BTL (HG)	4681645	7199030079	8	22	21.250	7.2	7.2		
2	COORS LIGHT 24/12 BTL (HG)	4681645	7199030079	8	22	21.250	7.2	7.2		
3	COORS LIGHT 24/12 BTL (HG)	4681645	7199030079	8	22	21.250	7.2	7.2		
4	COORS LIGHT 18/12 BTL	724076	7199030078	1	2	0.143	97.9	97.9		