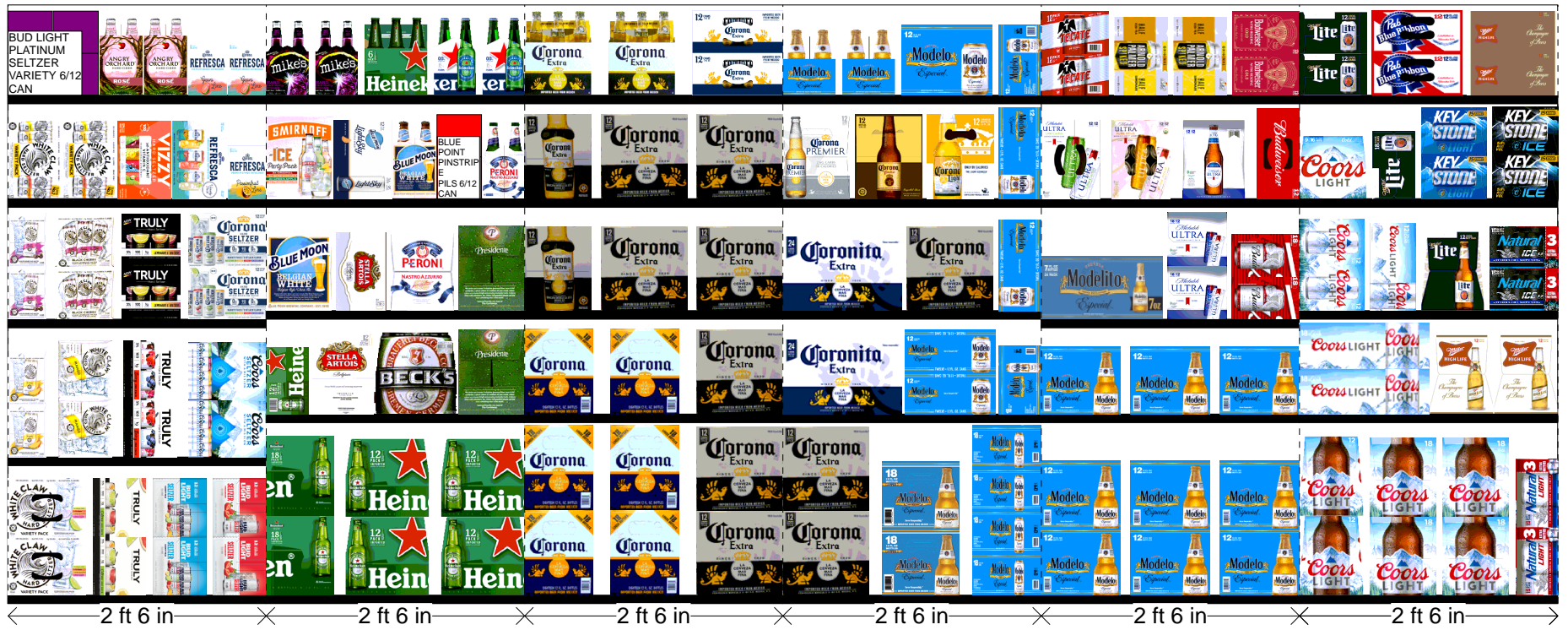


Rite Aid  
Store# 3844  
BRONX , NY

Cold

FMB always lead flow in relation to store traffic flow.  
Open a support ticket if planogram flow shown is reversed from actual store traffic flow



**Rite Aid**  
**Store# 3844**  
**BRONX , NY**

FINAL

Cold

FMB always lead flow in relation to store traffic flow.  
 Open a support ticket if planogram flow shown is reversed from actual store traffic flow

Segment 1 of 6 starting view

## Shelf Schematic Report

RITE AID\_3844 Store # 3844 # of segments: 6



Name: 1_1		W:30.00 in	D:22.00 in		
UPC (12 Digit)	Name	Ast	HFaci...	Orientat...	
635985548904	WHITECLAWVARIETYPACK12/...	Core	1	Top	
087692004240	TRULYVARIETYCITRUS12/12C...		1	Side 90	
018200202087	BUDLIGHTSELTZERVARIETY1...	PRO...	1	Side 90	
018200202179	BUDLIGHTSELTZERVARIETYR...	New	1	Side 90	

Name: 1_2		W:30.00 in	D:22.00 in		
UPC (12 Digit)	Name	Ast	HFaci...	Orientat...	
635985260875	WHITECLAWMANGO6/12CAN		1	Side	
635985100331	WHITECLAWMANGO12/12CAN		1	Side 90	
087692006862	TRULYVARIETYBERRY12/12C...	Core	1	Side 90	
071990000158	COORSHARDELTZERVARIET...	New	1	Top	

Name: 1_3		W:30.00 in	D:22.00 in		
UPC (12 Digit)	Name	Ast	HFaci...	Orientat...	
635985260875	WHITECLAWBLACKCHERRY6/...		1	Side	
635985260899	WHITECLAWBLACKCHERRY12...		1	Side	
087692009917	TRULYLEMONADEVARIETY12/...	PRO...	1	Side	
033544000434	CORONASELTZERVARIETY12/...	PRO...	1	Front	

Name: 1_4		W:30.00 in	D:22.00 in		
UPC (12 Digit)	Name	Ast	HFaci...	Orientat...	
635985800064	WHITECLAWVARIETYPACK12/...	PRO...	2	Front 90	
034100012328	VIZZYVARIETY12/12CAN	PRO...	1	Front 90	
033544000137	CORONAREFRESCAVARIETY1...		1	Front 90	
033544950630	CORONAREFRESCAPASSION...		1	Side	

Name: 1_5		W:30.00 in	D:12.00 in		
UPC (12 Digit)	Name	Ast	HFaci...	Orientat...	
018200202506	BUDLIGHTPLATINUMSELTZER...	New	2	Side	
087692006602	ANGRYORCHARDROSE6/12BTL		2	Side	
033544950678	CORONAREFRESCAGUAVALI...		2	Side	

Name: 2_1		W:30.00 in	D:22.00 in		
UPC (12 Digit)	Name	Ast	HFaci...	Orientat...	
072890001528	HEINEKEN18/12BTL	New	1	Side	
072890000163	HEINEKEN12/12BTL	Core	2	Front	

Name: 2\_2 W:30.00 in D:22.00 in

**Rite Aid**  
**Store# 3844**  
**BRONX , NY**

FINAL

Cold

FMB always lead flow in relation to store traffic flow.  
 Open a support ticket if planogram flow shown is reversed from actual store traffic flow

Segment 1 of 6 starting view

## Shelf Schematic Report

UPC (12 Digit)	Name	Ast	HFaci...	Orientat...
07289000200	HEINEKEN12/12CAN	Core	1	Side
786150000144	STELLAARTOIS12/11.2BTL	Core	1	Side
082488123006	BECKS12/12BTL	Core	1	Front
719057001563	PRESIDENTE12/12BTL		1	Side

Name: 2_3		W:30.00 in	D:22.00 in		
UPC (12 Digit)	Name	Ast	HFaci...	Orientat...	
071990095161	BLUEMOONBELGIANWHITE12/...	Core	1	Side	
786150000168	STELLAARTOIS12/11.2CAN	Core	1	Front 90	
181954000046	PERONI12/11.2BTL		1	Side	
719057001563	PRESIDENTE12/12BTL		1	Side	

Name: 2_4		W:30.00 in	D:22.00 in		
UPC (12 Digit)	Name	Ast	HFaci...	Orientat...	
082000729082	SMIRNOFFICEVARIETYPACK1...	PRO...	1	Side	
071990095925	BLUEMOONLIGHTSKY12/12CAN	PRO...	1	Top 90	
071990095116	BLUEMOONBELGIANWHITE6/1...		1	Side	
681745002513	BLUEPOINTPINSTRIPEPILS6/1...	PRO...	1	Side	
181954000022	PERONI6/11.2BTL		1	Side	

Name: 2_5		W:30.00 in	D:12.00 in		
UPC (12 Digit)	Name	Ast	HFaci...	Orientat...	
635985067443	MIKESHARDBLACKCHERRYLE...		2	Side	
072890000118	HEINEKEN6/12BTL	Core	1	Front	
072890006219	HEINEKEN0.0NEARBEER6/12B...		2	Side	





**Rite Aid**  
**Store# 3844**  
**BRONX , NY**

FINAL

Cold

FMB always lead flow in relation to store traffic flow.  
 Open a support ticket if planogram flow shown is reversed from actual store traffic flow

Segment 3 of 6 starting view

## Shelf Schematic Report

RITE AID\_3844 Store # 3844 # of segments: 6



Name: 3_1	W:30.00 in	D:22.00 in			
UPC (12 Digit)	Name	Ast	HFaci...	Orientat...	
080660956800	CORONA18/12BTL	Core	2	Side	
080660956152	CORONA12/12BTL	Core	1	Front	

Name: 3_2	W:30.00 in	D:22.00 in			
UPC (12 Digit)	Name	Ast	HFaci...	Orientat...	
080660956800	CORONA18/12BTL	Core	2	Side	
080660956152	CORONA12/12BTL	Core	1	Front	

Name: 3_3	W:30.00 in	D:22.00 in			
UPC (12 Digit)	Name	Ast	HFaci...	Orientat...	
080660956152	CORONA12/12BTL	Core	1	Side	
080660956152	CORONA12/12BTL	Core	2	Front	

Name: 3_4	W:30.00 in	D:22.00 in			
UPC (12 Digit)	Name	Ast	HFaci...	Orientat...	
080660956152	CORONA12/12BTL	Core	1	Side	
080660956152	CORONA12/12BTL	Core	2	Front	

Name: 3_5	W:30.00 in	D:12.00 in			
UPC (12 Digit)	Name	Ast	HFaci...	Orientat...	
080660956053	CORONA6/12BTL	Core	2	Front	
080660956954	CORONA12/12CAN	Core	1	Top	

Name: 4_1	W:30.00 in	D:22.00 in			
UPC (12 Digit)	Name	Ast	HFaci...	Orientat...	
080660956152	CORONA12/12BTL	Core	1	Front	
033544950272	MODELOESPECIAL18/12BTL	Core	1	Side	
080660957111	MODELOESPECIAL18/12CAN	Core	1	Side 90	

Name: 4_2	W:30.00 in	D:22.00 in			
UPC (12 Digit)	Name	Ast	HFaci...	Orientat...	
080660954080	CORONA24/7BTL	Core	1	Front	
080660957159	MODELOESPECIAL12/12CAN	Core	1	Top	
080660957111	MODELOESPECIAL18/12CAN	Core	1	Side	

Name: 4_3	W:30.00 in	D:22.00 in			
UPC (12 Digit)	Name	Ast	HFaci...	Orientat...	
080660954080	CORONA24/7BTL	Core	1	Front	

**Rite Aid**  
**Store# 3844**  
**BRONX , NY**

FINAL

Cold

FMB always lead flow in relation to store traffic flow.  
 Open a support ticket if planogram flow shown is reversed from actual store traffic flow

Segment 3 of 6 starting view

## Shelf Schematic Report

RITE AID 3844	Store # 3844	# of segments: 6			
080660956152	CORONA12/12BTL	Core	1	Front	
080660957159	MODELOESPECIAL12/12CAN	Core	1	Top 90	

Name: 4 4	W:30.00 in	D:22.00 in		
UPC (12 Digit)	Name	Ast	HFaci...	Orientat...
033544950425	CORONAPREMIER12/12BTL	Core	1	Side
033544950531	CORONAFAMILIAR12/12BTL		1	Side
080660956756	CORONALIGHT12/12BTL	Core	1	Side
080660957159	MODELOESPECIAL12/12CAN	Core	1	Top 90

Name: 4 5	W:30.00 in	D:12.00 in		
UPC (12 Digit)	Name	Ast	HFaci...	Orientat...
080660957654	MODELOESPECIAL6/12BTL		2	Side
080660957159	MODELOESPECIAL12/12CAN	Core	1	Front
080660957159	MODELOESPECIAL12/12CAN	Core	1	Side



**Rite Aid**  
**Store# 3844**  
**BRONX , NY**

FINAL

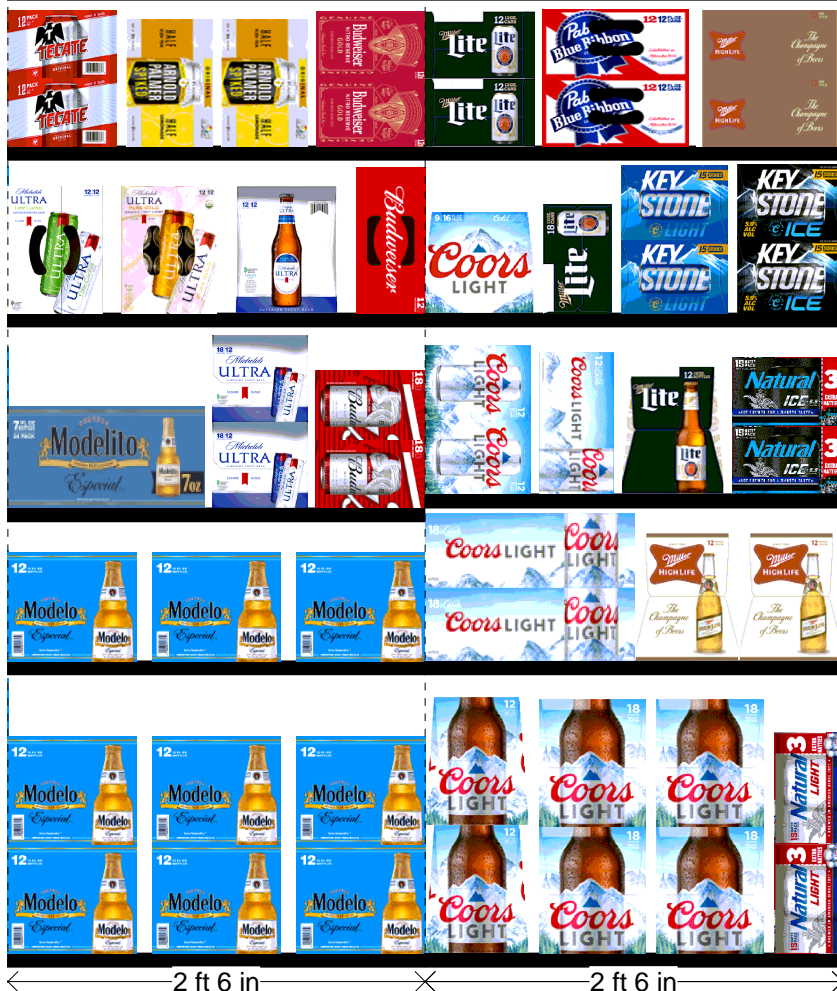
Cold

FMB always lead flow in relation to store traffic flow.  
 Open a support ticket if planogram flow shown is reversed from actual store traffic flow

Segment 5 of 6 starting view

## Shelf Schematic Report

RITE AID\_3844 Store # 3844 # of segments: 6



Name: 5_1	W:30.00 in	D:22.00 in			
UPC (12 Digit)	Name	Ast	HFaci...	Orientat...	
080660957579	MODELOESPECIAL12/12BTL	Core	3	Side	

Name: 5_2	W:30.00 in	D:22.00 in			
UPC (12 Digit)	Name	Ast	HFaci...	Orientat...	
080660957579	MODELOESPECIAL12/12BTL	Core	3	Side	

Name: 5_3	W:30.00 in	D:22.00 in			
UPC (12 Digit)	Name	Ast	HFaci...	Orientat...	
033544000212	MODELOESPECIAL24/7BTL	PRO...	1	Front	
018200967214	MICHELOBULTRA18/12CAN		1	Side 90	
018200112188	BUD18/12CAN	Core	1	Side 90	

Name: 5_4	W:30.00 in	D:22.00 in			
UPC (12 Digit)	Name	Ast	HFaci...	Orientat...	
018200169847	MICHELOBULTRALIMECACTU...	PRO...	1	Top 90	
018200201448	MICHELOBULTRAPUREGOLD1...	PRO...	1	Top 90	
018200059902	MICHELOBULTRA12/12BTL		1	Side	
018200110474	BUD12/12CAN	Core	1	Top 90	

Name: 5_5	W:30.00 in	D:12.00 in			
UPC (12 Digit)	Name	Ast	HFaci...	Orientat...	
089826900336	TECATE12/12CAN		1	Side 90	
613008752200	ARNOLDPALMERSPIKEDHALF...	New	2	Front 90	
018200202018	BUDWEISERNITROGOLD12/12...	PRO...	1	Side 90	

Name: 6_1	W:30.00 in	D:22.00 in			
UPC (12 Digit)	Name	Ast	HFaci...	Orientat...	
071990300692	COORSLIGHT12/12BTL	Core	1	Side	
071990300784	COORSLIGHT18/12BTL	Core	2	Side	
018200200779	NATURALLIGHT15/12CAN	Core	1	Side	

Name: 6_2	W:30.00 in	D:22.00 in			
UPC (12 Digit)	Name	Ast	HFaci...	Orientat...	
071990300173	COORSLIGHT18/12CAN	Core	1	Top	
034100015091	HIGHLIFE12/12BTL	Core	2	Side	

Name: 6_3	W:30.00 in	D:22.00 in			
UPC (12 Digit)	Name	Ast	HFaci...	Orientat...	

**Rite Aid**  
**Store# 3844**  
**BRONX , NY**

FINAL

Cold

FMB always lead flow in relation to store traffic flow.  
 Open a support ticket if planogram flow shown is reversed from actual store traffic flow

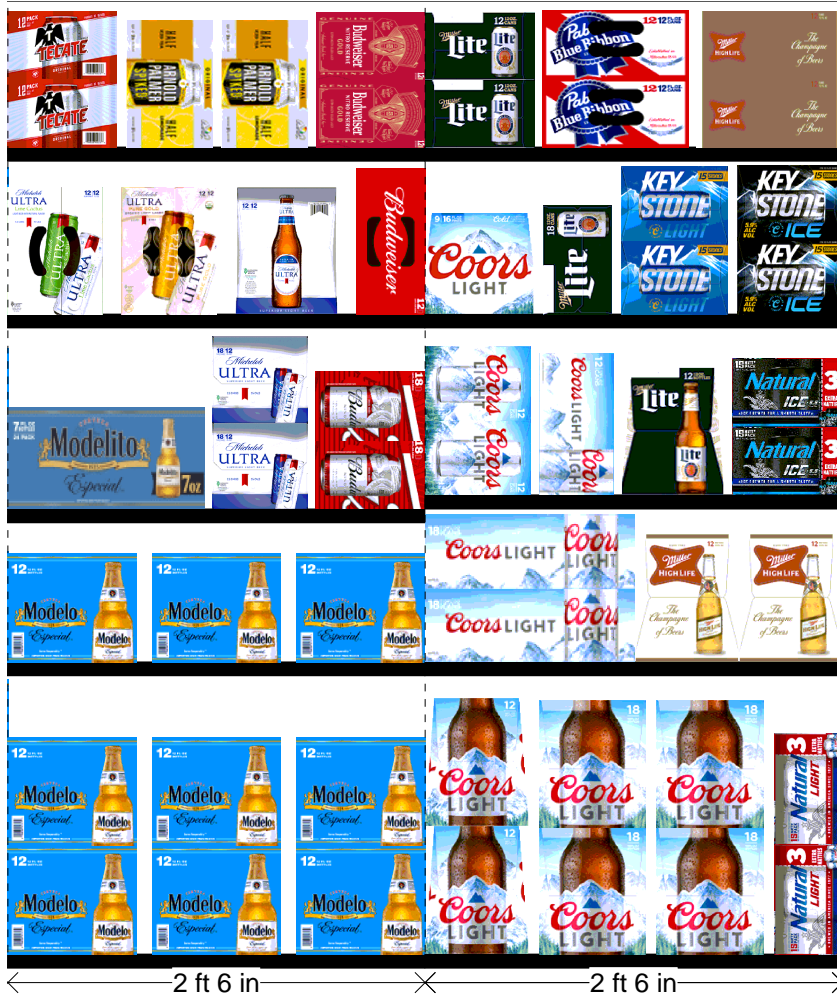
Segment 5 of 6 starting view

## Shelf Schematic Report

RITE AID_3844 Store # 3844		# of segments: 6			
071990000486	COORSLIGHT12/12CAN	New	1	Side	90
071990000486	COORSLIGHT12/12CAN	New	1	Top	90
034100575090	LITE12/12BTL		1	Side	
018200284434	NATURALICE15/12CAN	Core	1	Side	90

Name: 6_4		W:30.00 in		D:22.00 in	
UPC (12 Digit)	Name	Ast	HFaci...	Orientat...	
071990301040	COORSLIGHT9/16BTL(AL)		1	Front	
034100573409	LITE18/12CAN	Core	1	Side	
071990480455	KEYSTONELIGHT15/12CAN		1	Side 90	
071990281519	KEYSTONEICE15/12CAN		1	Side 90	

Name: 6_5		W:30.00 in		D:12.00 in	
UPC (12 Digit)	Name	Ast	HFaci...	Orientat...	
034100576363	LITE12/12CAN		1	Side 90	
022100001701	PABST12/12CAN		1	Top	
034100016364	HIGHLIFE12/12CAN		1	Top	





Rite Aid  
Store# 3844  
BRONX, NY

OPEN

FMB always lead flow in relation to store traffic flow.  
Open a support ticket if planogram flow shown is reversed from actual store traffic flow





**Rite Aid**  
**Store# 3844**  
**BRONX , NY**

FINAL

OPEN

FMB always lead flow in relation to store traffic flow.  
 Open a support ticket if planogram flow shown is reversed from actual store traffic flow

Segment 1 of 2 starting view

## Shelf Schematic Report

RITE AID\_3844 Store # 3844 # of segments: 2



Name: 1_1		W:72.00 in	D:18.00 in		
UPC (12 Digit)	Name	Ast	HFaci...	Orientat...	
072890001528	HEINEKEN18/12BTL	New	1	Side	
719057001563	PRESIDENTE12/12BTL		1	Side	
082488123006	BECKS12/12BTL	Core	1	Side	
786150000144	STELLAARTOIS12/11.2BTL	Core	1	Side	
080660954080	CORONA24/7BTL	Core	1	Side	
080660957111	MODELOESPECIAL18/12CAN	Core	1	Side 90	
080660957579	MODELOESPECIAL12/12BTL	Core	1	Side	
071990300173	COORSLIGHT18/12CAN	Core	1	Side 90	
071990300784	COORSLIGHT18/12BTL	Core	1	Side	

Name: 1_2		W:72.00 in	D:18.00 in		
UPC (12 Digit)	Name	Ast	HFaci...	Orientat...	
635985260899	WHITECLAWBLACKCHERRY12...		1	Top 90	
072890000200	HEINEKEN12/12CAN	Core	1	Top 90	
080660956954	CORONA12/12CAN	Core	1	Side 90	
033544000182	CORONAPREMIER18/12BTL		1	Side	
080660957111	MODELOESPECIAL18/12CAN	Core	1	Side 90	
018200530470	BUDLIGHT12/12CAN	Core	1	Top 90	
071990300692	COORSLIGHT12/12BTL	Core	2	Side	
071990000486	COORSLIGHT12/12CAN	New	1	Side 90	
018200200779	NATURALLIGHT15/12CAN	Core	1	Side 90	

Name: 1_3		W:72.00 in	D:18.00 in		
UPC (12 Digit)	Name	Ast	HFaci...	Orientat...	
635985200253	WHITECLAWBLACKCHERRY6/...		1	Side 90	
635985548904	WHITECLAWVARIETYPACK12/...	Core	1	Front 90	
635985100331	WHITECLAWMANGO12/12CAN		1	Front 90	
087692004240	TRULYVARIETYCITRUS12/12C...		1	Front 90	
087692006862	TRULYVARIETYBERRY12/12C...	Core	1	Front 90	
071990000158	COORSHARDSLTZERVARIET...	New	1	Front 90	
034100012328	VIZZYVARIETY12/12CAN	PRO...	1	Front 90	
041827701121	ARCTICSUMMERSPIKEDVARI...	PRO...	1	Front 90	
071990000486	COORSLIGHT12/12CAN	New	1	Side 90	
034100573409	LITE18/12CAN	Core	1	Side 90	
034100015091	HIGHLIFE12/12BTL	Core	1	Side	

Name: 1_4		W:72.00 in	D:18.00 in		
UPC (12 Digit)	Name	Ast	HFaci...	Orientat...	

**Rite Aid**  
**Store# 3844**  
**BRONX , NY**

FINAL

OPEN

FMB always lead flow in relation to store traffic flow.  
 Open a support ticket if planogram flow shown is reversed from actual store traffic flow

Segment 1 of 2 starting view

## Shelf Schematic Report

RITE AID 3844	Store # 3844	# of segments: 2		
635985025986	WHITECLAWNATURALLIME6/1...		1	Side
635985260875	WHITECLAWMANGO6/12CAN		1	Side
033544950630	CORONAREFRESCAPASSION...		1	Side
033544950678	CORONAREFRESCAGUAVALI...		1	Side
033544000137	CORONAREFRESCAVARIETY1...		1	Top 90
082000781424	SMIRNOFFSPIKEDSPARKLING...		1	Top 90
613008748333	ARNOLDPALMERSPIKEDHALF...		1	Side
786150002001	STELLAARTOIS6/12CAN		1	Front 90
083820123937	GUINNESSEXTRASTOUT6/12B...	Core	2	Side
071439344508	ROLLINGROCK12/12CAN		1	Top 90
034100016364	HIGHLIFE12/12CAN		1	Top 90
034100015091	HIGHLIFE12/12BTL	Core	1	Front

