

Rite Aid
Store# 3363
BRONX, NY

FINAL

Cold

FMB always lead flow in relation to store traffic flow.
Open a support ticket if planogram flow shown is reversed from actual store traffic flow

Segment 1 of 6 starting view

Shelf Schematic Report

RITE AID_3363 Store # 3363 # of segments: 6



Name: 1_1		W:30.00 in	D:27.00 in		
UPC (12 Digit)	Name	Ast	HFaci...	Orientat...	
635985548904	WHITECLAWVARIETY12/12CA...	Core	1	Top	
087692009917	TRULYLEMONADEVARIETY12/...	PRO...	1	Side 90	
087692004240	TRULYVARIETYCITRUS12/12C...		1	Side 90	
018200202087	BUDLIGHTSELTZERVARIETY1...	PRO...	1	Side 90	

Name: 1_2		W:30.00 in	D:22.00 in		
UPC (12 Digit)	Name	Ast	HFaci...	Orientat...	
635985800064	WHITECLAWVARIETY12/12CA...	PRO...	1	Top	
087692008040	TRULYVARIETYTROPICAL12/1...		1	Side 90	
033544000434	CORONASELTZERVARIETY12/...	PRO...	1	Side 90	
018200202179	BUDLIGHTSELTZERVARIETYR...	New	1	Side 90	

Name: 1_3		W:30.00 in	D:22.00 in		
UPC (12 Digit)	Name	Ast	HFaci...	Orientat...	
635985260899	WHITECLAWBLACKCHERRY12...		1	Front	
034100012328	VIZZYVARIETY12/12CAN(A)	PRO...	1	Side	
071990000158	COORSHARDSELTZERVARIET...	New	1	Side	
034100012229	MOVOVARIETY4/8.4CAN		1	Front 90	

Name: 1_4		W:30.00 in	D:22.00 in		
UPC (12 Digit)	Name	Ast	HFaci...	Orientat...	
635985200284	WHITECLAWRUBYGRAPEFRUI...		1	Top 90	
087692004172	TRULYCOLIMALIME6/12CAN		1	Top 90	
041827701121	ARCTICCHILLHARDSELTZERV...	PRO...	1	Side 90	
033544000137	CORONAVARIETYREFRESCA1...		1	Side	
635985067443	MIKESHARDBLACKCHERRYLE...		1	Side	

Name: 1_5		W:30.00 in	D:12.00 in		
UPC (12 Digit)	Name	Ast	HFaci...	Orientat...	
018200202506	BUDLIGHTPLATINUMSELTZER...	New	1	Front	
087692821021	ANGRYORCHARDCRISPAPPL...		1	Front	
087692006602	ANGRYORCHARDROSE6/12BTL		1	Front	
018200209932	BUDLIGHTLIMESTRAW-BER-RI...		1	Side 90	

Name: 2_1		W:30.00 in	D:27.00 in		
UPC (12 Digit)	Name	Ast	HFaci...	Orientat...	
072890001528	HEINEKEN18/12BTL	New	1	Side	
072890000163	HEINEKEN12/12BTL	Core	2	Side	

Rite Aid
Store# 3363
BRONX , NY

FINAL

Cold

FMB always lead flow in relation to store traffic flow.
 Open a support ticket if planogram flow shown is reversed from actual store traffic flow

Segment 1 of 6 starting view

Shelf Schematic Report

RITE AID_3363 Store # 3363 # of segments: 6
 07289000163 HEINEKEN12/12BTL Core 1 Side

Name: 2_2		W:30.00 in	D:22.00 in		
UPC (12 Digit)	Name	Ast	HFaci...	Orientat...	
786150001493	STELLAARTOIS18/11.2BTL		1	Side	
072890000200	HEINEKEN12/12CAN	Core	1	Top 90	
072890001528	HEINEKEN18/12BTL	New	1	Side	
072890001597	HEINEKENLIGHT12/12BTL	Core	1	Side	

Name: 2_3		W:30.00 in	D:22.00 in		
UPC (12 Digit)	Name	Ast	HFaci...	Orientat...	
786150000168	STELLAARTOIS12/11.2CAN	Core	1	Front 90	
786150000014	STELLAARTOIS6/11.2BTL	Core	1	Front	
072890000118	HEINEKEN6/12BTL	Core	1	Side	
072890006219	HEINEKEN0.0NEARBEER6/12B...		1	Side	
072890001580	HEINEKENLIGHT6/12BTL		1	Side	

Name: 2_4		W:30.00 in	D:22.00 in		
UPC (12 Digit)	Name	Ast	HFaci...	Orientat...	
786150000144	STELLAARTOIS12/11.2BTL	Core	2	Front	
719057001563	PRESIDENTE12/12BTL		1	Front	

Name: 2_5		W:30.00 in	D:12.00 in		
UPC (12 Digit)	Name	Ast	HFaci...	Orientat...	
083820123937	GUINNESSEXTRASTOUT6/12B...	Core	2	Front	
181954000022	PERONI6/11.2BTL		2	Front	



Rite Aid
Store# 3363
BRONX , NY

FINAL

Cold

FMB always lead flow in relation to store traffic flow.
 Open a support ticket if planogram flow shown is reversed from actual store traffic flow

Segment 3 of 6 starting view

Shelf Schematic Report

RITE AID_3363	Store # 3363	# of segments: 6		
Name: 4_3	W:30.00 in	D:22.00 in		
UPC (12 Digit)	Name	Ast	HFaci...	Orientat...
080660954080	CORONA24/7BTL	Core	1	Front
033544000212	MODELOESPECIAL24/7BTL	PRO...	1	Front

Name: 4_4	W:30.00 in	D:22.00 in		
UPC (12 Digit)	Name	Ast	HFaci...	Orientat...
080660956053	CORONA6/12BTL	Core	1	Side
033544950418	CORONAPREMIER6/12BTL		1	Side
033544950449	CORONAPREMIER12/12CAN		1	Side
080660957876	MODELONEGRA12/12BTL		1	Front

Name: 4_5	W:30.00 in	D:12.00 in		
UPC (12 Digit)	Name	Ast	HFaci...	Orientat...
613008752200	ARNOLDPALMERSPIKEDHALF...	New	2	Front 90
080660957654	MODELOESPECIAL6/12BTL		1	Side
080660957654	MODELOESPECIAL6/12BTL		1	Front



Rite Aid
Store# 3363
BRONX, NY

FINAL

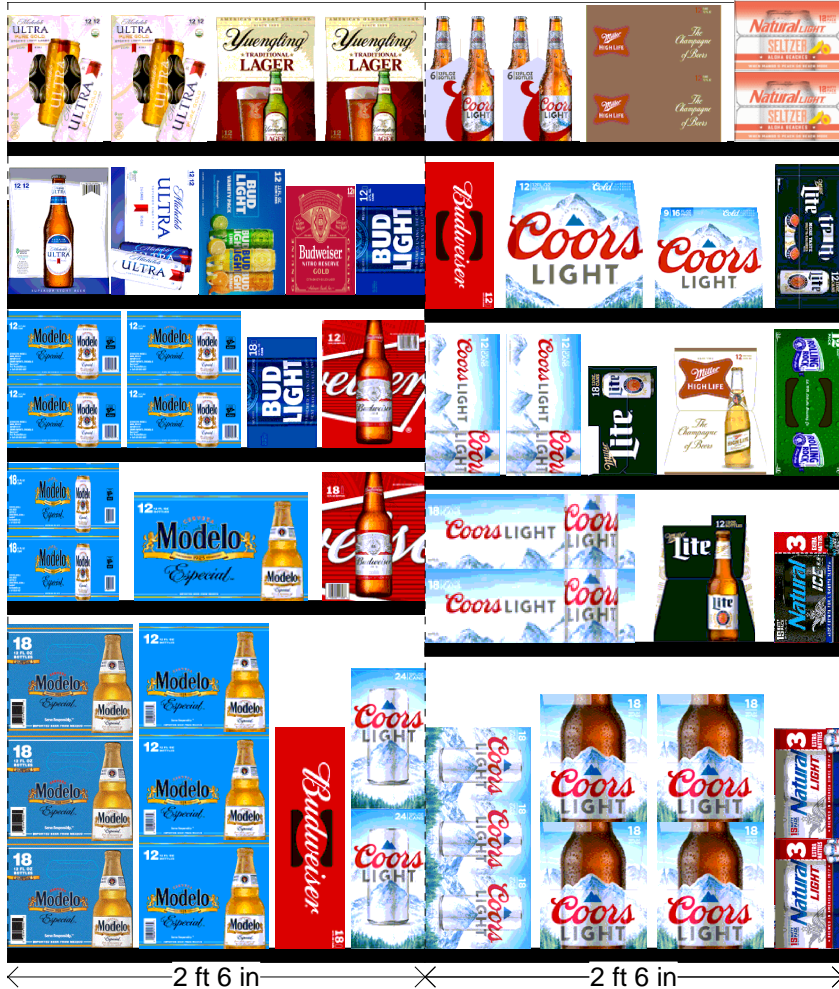
Cold

FMB always lead flow in relation to store traffic flow.
Open a support ticket if planogram flow shown is reversed from actual store traffic flow

Segment 5 of 6 starting view

Shelf Schematic Report

RITE AID_3363 Store # 3363 # of segments: 6



Name: 5_1		W:30.00 in	D:27.00 in		
UPC (12 Digit)	Name	Ast	HFaci...	Orientat...	
033544950272	MODELOESPECIAL18/12BTL	Core	1	Side	
080660957579	MODELOESPECIAL12/12BTL	Core	1	Side	
018200112188	BUD18/12CAN	Core	1	Top 90	
071990316006	COORSLIGHT24/12CAN		1	Side	

Name: 5_2		W:30.00 in	D:22.00 in		
UPC (12 Digit)	Name	Ast	HFaci...	Orientat...	
080660957111	MODELOESPECIAL18/12CAN	Core	1	Side 90	
080660957579	MODELOESPECIAL12/12BTL	Core	1	Front	
018200113086	BUD18/12BTL		1	Side	

Name: 5_3		W:30.00 in	D:22.00 in		
UPC (12 Digit)	Name	Ast	HFaci...	Orientat...	
080660957159	MODELOESPECIAL12/12CAN	Core	2	Side 90	
018200532184	BUDLIGHT18/12CAN	Core	1	Side	
018200007712	BUD12/12BTL		1	Side	

Name: 5_4		W:30.00 in	D:22.00 in		
UPC (12 Digit)	Name	Ast	HFaci...	Orientat...	
018200059902	MICHELOBULTRA12/12BTL		1	Side	
018200069918	MICHELOBULTRA12/12CAN		1	Front 90	
018200202100	BUDLIGHTPEELSVARIETY12/1...	PRO...	1	Front 90	
018200202018	BUDWEISERNITROGOLD12/12...	PRO...	1	Side	
018200530470	BUDLIGHT12/12CAN	Core	1	Side	

Name: 5_5		W:30.00 in	D:12.00 in		
UPC (12 Digit)	Name	Ast	HFaci...	Orientat...	
018200201448	MICHELOBULTRAPUREGOLD1...	PRO...	2	Top 90	
089924278962	YUENGLINGLAGER12/12BTL		2	Side	

Name: 6_1		W:30.00 in	D:27.00 in		
UPC (12 Digit)	Name	Ast	HFaci...	Orientat...	
071990300173	COORSLIGHT18/12CAN	Core	1	Side 90	
071990300784	COORSLIGHT18/12BTL	Core	2	Side	
018200200779	NATURALLIGHT15/12CAN	Core	1	Side	

Name: 6_2		W:30.00 in	D:22.00 in		
UPC (12 Digit)	Name	Ast	HFaci...	Orientat...	

Rite Aid
Store# 3363
BRONX , NY

FINAL

Cold

FMB always lead flow in relation to store traffic flow.
 Open a support ticket if planogram flow shown is reversed from actual store traffic flow

Segment 5 of 6 starting view

Shelf Schematic Report

RITE AID_3363	Store # 3363	# of segments: 6			
071990300173	COORSLIGHT18/12CAN	Core	1	Top	
034100575090	LITE12/12BTL		1	Side	
018200284434	NATURALICE15/12CAN	Core	1	Side	

Name: 6_3	W:30.00 in	D:22.00 in			
UPC (12 Digit)	Name	Ast	HFaci...	Orientat...	
071990000486	COORSLIGHT12/12CAN	New	2	Top 90	
034100573409	LITE18/12CAN	Core	1	Side	
034100015091	HIGHLIFE12/12BTL	Core	1	Side	
071439344508	ROLLINGROCK12/12CAN		1	Top 90	

Name: 6_4	W:30.00 in	D:22.00 in			
UPC (12 Digit)	Name	Ast	HFaci...	Orientat...	
018200110474	BUD12/12CAN	Core	1	Top 90	
071990300692	COORSLIGHT12/12BTL	Core	1	Front	
071990301040	COORSLIGHT9/16BTL(AL)		1	Front	
034100576363	LITE12/12CAN		1	Top 90	

Name: 6_5	W:30.00 in	D:12.00 in			
UPC (12 Digit)	Name	Ast	HFaci...	Orientat...	
071990300050	COORSLIGHT6/12BTL		2	Side	
034100016364	HIGHLIFE12/12CAN		1	Top	
018200201790	NATURALLIGHTSELTZERVARI...	PRO...	1	Side 90	



Rite Aid
Store# 3363
BRONX, NY

Warm

FMB always lead flow in relation to store traffic flow.
Open a support ticket if planogram flow shown is reversed from actual store traffic flow



Rite Aid
Store# 3363
BRONX , NY

FINAL

Warm

FMB always lead flow in relation to store traffic flow.
 Open a support ticket if planogram flow shown is reversed from actual store traffic flow

Segment 1 of 4 starting view

Shelf Schematic Report

RITE AID_3363 Store # 3363 # of segments: 4

Name: 2_1		W:192.00 in	D:14.50 in		
UPC (12 Digit)	Name	Ast	HFaci...	Orientat...	
071990300784	COORSLIGHT18/12BTL	Core	2	Side	
018200007712	BUD12/12BTL		2	Side	
033544950272	MODELOESPECIAL18/12BTL	Core	1	Side	
080660957579	MODELOESPECIAL12/12BTL	Core	1	Side	
080660956152	CORONA12/12BTL	Core	3	Front	
080660954080	CORONA24/7BTL	Core	1	Side	
080660956800	CORONA18/12BTL	Core	2	Side	

Name: 2_2		W:192.00 in	D:14.50 in		
UPC (12 Digit)	Name	Ast	HFaci...	Orientat...	
018200200779	NATURALLIGHT15/12CAN	Core	1	Side 90	
071990300692	COORSLIGHT12/12BTL	Core	2	Side	
018200112188	BUD18/12CAN	Core	1	Side 90	
033544950272	MODELOESPECIAL18/12BTL	Core	1	Side	
080660957579	MODELOESPECIAL12/12BTL	Core	1	Side	
080660956152	CORONA12/12BTL	Core	3	Front	
080660954080	CORONA24/7BTL	Core	1	Side	

Name: 2_3		W:192.00 in	D:14.50 in		
UPC (12 Digit)	Name	Ast	HFaci...	Orientat...	
071990480455	KEYSTONELIGHT15/12CAN		1	Side 90	
071990300173	COORSLIGHT18/12CAN	Core	2	Side 90	
071990000486	COORSLIGHT12/12CAN	New	1	Top	
071990301040	COORSLIGHT9/16BTL(AL)		1	Front	
080660957159	MODELOESPECIAL12/12CAN	Core	1	Top	
080660957111	MODELOESPECIAL18/12CAN	Core	1	Side 90	
080660956954	CORONA12/12CAN	Core	1	Side 90	
080660956053	CORONA6/12BTL	Core	2	Side	
033544950418	CORONAPREMIER6/12BTL		2	Side	

Name: 2_4		W:192.00 in	D:14.50 in		
UPC (12 Digit)	Name	Ast	HFaci...	Orientat...	
034100015091	HIGHLIFE12/12BTL	Core	1	Front	
034100576363	LITE12/12CAN		1	Top 90	
034100575090	LITE12/12BTL		1	Front	
089924278962	YUENGLINGLAGER12/12BTL		1	Front	
018200967214	MICHELOBULTRA18/12CAN		1	Side 90	
080660957852	MODELONEGRA6/12BTL		2	Side	



Rite Aid
Store# 3363
BRONX , NY

FINAL

Warm

FMB always lead flow in relation to store traffic flow.
 Open a support ticket if planogram flow shown is reversed from actual store traffic flow

Segment 1 of 4 starting view

Shelf Schematic Report

RITE AID_3363	Store # 3363	# of segments: 4		
080660957876	MODELONEGRA12/12BTL		1	Side
089826900336	TECATE12/12CAN		1	Top 90
089826900206	TECATELIGHT12/12CAN		1	Top 90
072311230216	SOL12/12BTL		1	Front
719057001563	PRESIDENTE12/12BTL		1	Front

Name: 2_5		W:192.00 in	D:14.50 in		
UPC (12 Digit)	Name	Ast	HFaci...	Orientat...	
018200284434	NATURALICE15/12CAN	Core	1	Side 90	
034100016364	HIGHLIFE12/12CAN		1	Side 90	
022100001701	PABST12/12CAN		1	Side 90	
034100570231	LITE9/16BTL(AL)		1	Front	
071990300050	COORSLIGHT6/12BTL		2	Side	
018200169847	MICHELOBULTRALIMECACTU...	PRO...	1	Top 90	
018200149900	BUDLIGHTLIME12/12BTL		2	Side	
723830212121	LAGUNITASIPA12/12CAN		1	Top 90	
723830000094	LAGUNITASIPA6/12BTL		2	Side	
071990095369	BLUEMOONSEASONAL12/12BTL		2	Side	



Rite Aid
Store# 3363
BRONX , NY

FINAL

Warm

FMB always lead flow in relation to store traffic flow.
 Open a support ticket if planogram flow shown is reversed from actual store traffic flow

Segment 3 of 4 starting view

Shelf Schematic Report

RITE AID_3363 Store # 3363 # of segments: 4

Name: 2_1		W:192.00 in	D:14.50 in		
UPC (12 Digit)	Name	Ast	HFaci...	Orientat...	
033544000182	CORONAPREMIER18/12BTL		1	Side	
080660956237	CORONALIGHT18/12BTL		1	Side	
072890001597	HEINEKENLIGHT12/12BTL	Core	1	Side	
072890001528	HEINEKEN18/12BTL	New	3	Side	
018200202087	BUDLIGHTSELTZERVARIETY1...	PRO...	2	Front 90	
087692009917	TRULYLEMONADEVARIETY12/...	PRO...	1	Front 90	
087692006862	TRULYVARIETYBERRY12/12C...	Core	1	Front 90	
635985800064	WHITECLAWVARIETY12/12CA...	PRO...	2	Front 90	
635985548904	WHITECLAWVARIETY12/12CA...	Core	1	Front 90	

Name: 2_2		W:192.00 in	D:14.50 in		
UPC (12 Digit)	Name	Ast	HFaci...	Orientat...	
080660956800	CORONA18/12BTL	Core	2	Side	
033544000182	CORONAPREMIER18/12BTL		1	Side	
080660956237	CORONALIGHT18/12BTL		1	Side	
072890001597	HEINEKENLIGHT12/12BTL	Core	1	Side	
072890000163	HEINEKEN12/12BTL	Core	3	Side	
082000781424	SMIRNOFFSPIKEDSPARKLING...		1	Front 90	
033544000434	CORONASELTZERVARIETY12/...	PRO...	2	Front 90	
087692008040	TRULYVARIETYTROPICAL12/1...		1	Front 90	
087692004240	TRULYVARIETYCITRUS12/12C...		1	Front 90	
635985100331	WHITECLAWMANGO12/12CAN		1	Front 90	
635985260899	WHITECLAWBLACKCHERRY12...		1	Front 90	

Name: 2_3		W:192.00 in	D:14.50 in		
UPC (12 Digit)	Name	Ast	HFaci...	Orientat...	
033544950425	CORONAPREMIER12/12BTL	Core	1	Side	
080660956756	CORONALIGHT12/12BTL	Core	1	Side	
072890001580	HEINEKENLIGHT6/12BTL		2	Side	
072890000163	HEINEKEN12/12BTL	Core	3	Side	
853897002271	BONANDVIVSPIKEDSELTZERV...	Move	1	Front 90	
018200202179	BUDLIGHTSELTZERVARIETYR...	New	1	Front 90	
071990000158	COORSHARDSELTZERVARIET...	New	1	Front 90	
087692007814	TRULYROSE6/12CAN		1	Side 90	
087692006787	TRULYWILDBERRY6/12CAN		1	Side 90	
635985260660	WHITECLAWRASPBERRY6/12...		1	Side 90	
635985025986	WHITECLAWNATURALLIME6/1...		1	Side 90	



Rite Aid
Store# 3363
BRONX , NY

FINAL

Warm

FMB always lead flow in relation to store traffic flow.
 Open a support ticket if planogram flow shown is reversed from actual store traffic flow

Segment 3 of 4 starting view

Shelf Schematic Report

RITE AID_3363 Store # 3363 # of segments: 4				
Name: 2_4		W:192.00 in	D:14.50 in	
UPC (12 Digit)	Name	Ast	HFaci...	Orientat...
082488123006	BECKS12/12BTL	Core	2	Side
786150000144	STELLAARTOIS12/11.2BTL	Core	2	Side
072890000118	HEINEKEN6/12BTL	Core	2	Side
072890005298	HEINEKEN12/8CAN		1	Side 90
072890000200	HEINEKEN12/12CAN	Core	1	Top 90
034100012229	MOVVARIETY4/8.4CAN		1	Front 90
033544000137	CORONAVARIETYREFRESCA1...		1	Front 90
033544950678	CORONAREFRESCAGUAVALLI...		1	Side 90
033544950630	CORONAREFRESCAPASSION...		1	Side 90
018200202506	BUDLIGHTPLATINUMSELTZER...	New	1	Side
034100012328	VIZZYVARIETY12/12CAN(A)	PRO...	1	Front 90
635985200284	WHITECLAWRUBYGRAPEFRUI...		1	Top
635985200253	WHITECLAWBLACKCHERRY6/...		1	Top

Name: 2_5		W:192.00 in	D:14.50 in	
UPC (12 Digit)	Name	Ast	HFaci...	Orientat...
071990095161	BLUEMOONBELGIANWHITE12/...	Core	2	Side
071990170523	BLUEMOONBELGIANWHITE15...		1	Side 90
071990095116	BLUEMOONBELGIANWHITE6/1...		2	Side
754527009946	NEWBELGIUMVOODOOROTAT...		1	Side
856632004271	BRONXSUMMER6/12CAN		1	Side
030613000302	BROOKLYNLAGER6/12CAN		1	Side
859093002466	SIXPOINTRESINIIPA6/12CAN		1	Side
851464003089	REVOLUTIONANTHERO6/12C...		1	Side
087692831020	TWISTEDTEAORIGINAL6/12BTL		2	Side
635985100621	MIKESHARDLEMONADE6/11.2...		2	Side
018200201325	STELLAARTOISSPRITZER6/12...		1	Side 90
087692004172	TRULYCOLIMALIME6/12CAN		1	Side 90
635985260875	WHITECLAWMANGO6/12CAN		1	Top

