

Rite Aid
Store# 10577
BROOKLYN , NY

Cold

FMB always lead flow in relation to store traffic flow.
Open a support ticket if planogram flow shown is reversed from actual store traffic flow



Rite Aid
Store# 10577
BROOKLYN , NY

FINAL

Cold

FMB always lead flow in relation to store traffic flow.
 Open a support ticket if planogram flow shown is reversed from actual store traffic flow

Segment 1 of 5 starting view

Shelf Schematic Report

RITE AID_10577 Store # 10577 # of segments: 5



Name: 1_1		W:30.00 in	D:26.00 in		
UPC (12 Digit)	Name	Ast	HFaci...	Orientat...	
071990300173	COORSLIGHT18/12CAN	Core	1	Top 90	
071990300784	COORSLIGHT18/12BTL	Core	1	Side	
018200113086	BUD18/12BTL		2	Side	

Name: 1_2		W:30.00 in	D:22.00 in		
UPC (12 Digit)	Name	Ast	HFaci...	Orientat...	
071439344508	ROLLINGROCK12/12CAN		1	Side 90	
034100573409	LITE18/12CAN	Core	1	Side	
071990300692	COORSLIGHT12/12BTL	Core	1	Side	
018200007712	BUD12/12BTL		1	Side	

Name: 1_3		W:30.00 in	D:22.00 in		
UPC (12 Digit)	Name	Ast	HFaci...	Orientat...	
034100576363	LITE12/12CAN		1	Top 90	
071990000486	COORSLIGHT12/12CAN	New	1	Top 90	
018200089817	BUD8/16CAN		1	Front 90	
018200110474	BUD12/12CAN	Core	1	Top 90	
018200201448	MICHELOBULTRAPUREGOLD1...	PRO...	1	Front 90	

Name: 1_4		W:30.00 in	D:22.00 in		
UPC (12 Digit)	Name	Ast	HFaci...	Orientat...	
089924278962	YUENGLINGLAGER12/12BTL		1	Side	
018200112188	BUD18/12CAN	Core	1	Side 90	
018200069918	MICHELOBULTRA12/12CAN	PRO...	1	Front 90	
613008752200	ARNOLDPALMERSPIKEDHALF...	New	1	Front 90	

Name: 1_5		W:30.00 in	D:12.00 in		
UPC (12 Digit)	Name	Ast	HFaci...	Orientat...	
022100001701	PABST12/12CAN		1	Top	
034100016364	HIGHLIFE12/12CAN		1	Top	
018200202100	BUDLIGHTPEELSVARIETY12/1...	PRO...	1	Top 90	

Name: 2_1		W:30.00 in	D:26.00 in		
UPC (12 Digit)	Name	Ast	HFaci...	Orientat...	
080660957579	MODELOESPECIAL12/12BTL	Core	1	Front	
080660957579	MODELOESPECIAL12/12BTL	Core	1	Side	
080660957159	MODELOESPECIAL12/12CAN	Core	1	Side 90	

Rite Aid
Store# 10577
BROOKLYN , NY

FINAL

Cold

FMB always lead flow in relation to store traffic flow.
 Open a support ticket if planogram flow shown is reversed from actual store traffic flow

Segment 1 of 5 starting view

Shelf Schematic Report



RITE AID_10577 Store # 10577 # of segments: 5					
Name: 2_2		W:30.00 in	D:22.00 in		
UPC (12 Digit)	Name	Ast	HFaci...	Orientat...	
018200533082	BUDLIGHT18/12BTL		1	Side	
018200532184	BUDLIGHT18/12CAN	Core	1	Side	
080660957111	MODELOESPECIAL18/12CAN	Core	1	Top	
Name: 2_3		W:30.00 in	D:22.00 in		
UPC (12 Digit)	Name	Ast	HFaci...	Orientat...	
018200533082	BUDLIGHT18/12BTL		1	Side	
018200532184	BUDLIGHT18/12CAN	Core	1	Side	
080660957159	MODELOESPECIAL12/12CAN	Core	1	Side 90	
080660957111	MODELOESPECIAL18/12CAN	Core	1	Side 90	
Name: 2_4		W:30.00 in	D:22.00 in		
UPC (12 Digit)	Name	Ast	HFaci...	Orientat...	
018200007699	BUDLIGHT12/12BTL		1	Side	
033544000212	MODELOESPECIAL24/7BTL	PRO...	1	Front	
033544950425	CORONAPREMIER12/12BTL	Core	1	Side	
Name: 2_5		W:30.00 in	D:12.00 in		
UPC (12 Digit)	Name	Ast	HFaci...	Orientat...	
018200530470	BUDLIGHT12/12CAN	Core	1	Top	
072311630214	SOL6/12BTL		1	Front	
033544950418	CORONAPREMIER6/12BTL		1	Front	

Rite Aid
Store# 10577
BROOKLYN , NY

FINAL

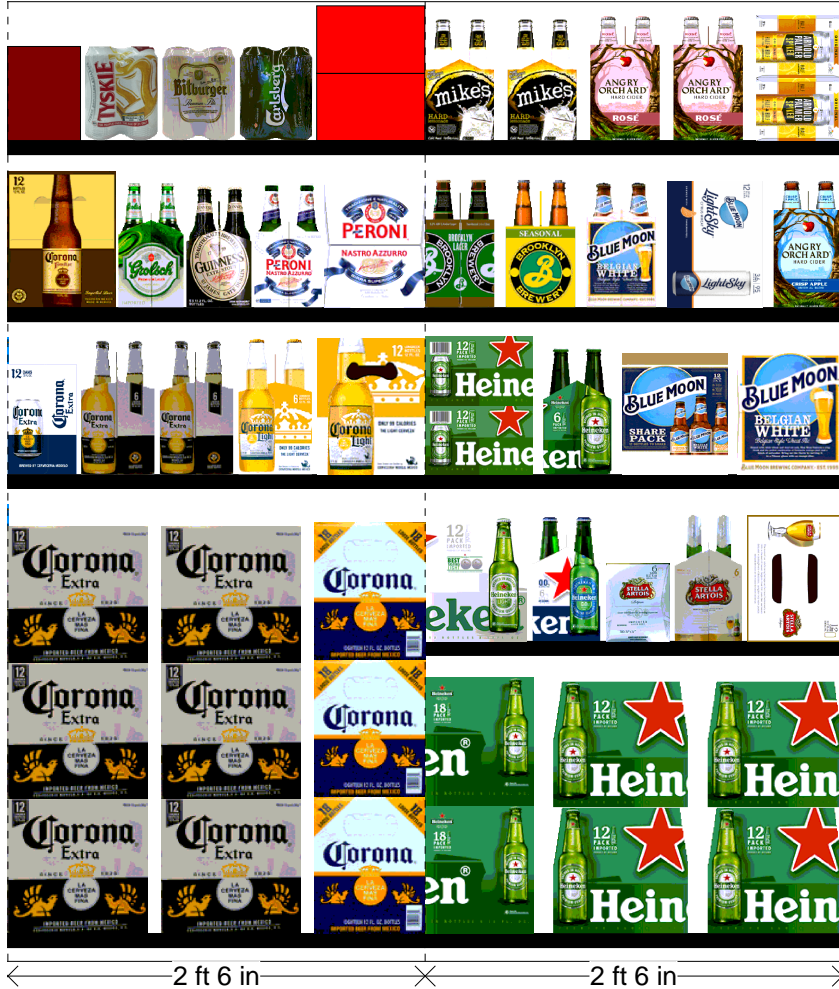
Cold

FMB always lead flow in relation to store traffic flow.
 Open a support ticket if planogram flow shown is reversed from actual store traffic flow

Segment 3 of 5 starting view

Shelf Schematic Report

RITE AID_10577 Store # 10577 # of segments: 5



Name: 3_1	W:30.00 in	D:26.00 in			
UPC (12 Digit)	Name	Ast	HFaci...	Orientat...	
080660956152	CORONA12/12BTL	Core	2	Front	
080660956800	CORONA18/12BTL	Core	1	Side	

Name: 3_2	W:30.00 in	D:22.00 in			
UPC (12 Digit)	Name	Ast	HFaci...	Orientat...	
080660956954	CORONA12/12CAN	Core	1	Side	
080660956053	CORONA6/12BTL	Core	2	Side	
080660956251	CORONALIGHT6/12BTL		1	Side	
080660956756	CORONALIGHT12/12BTL	Core	1	Side	

Name: 3_3	W:30.00 in	D:22.00 in			
UPC (12 Digit)	Name	Ast	HFaci...	Orientat...	
033544950531	CORONAFAMILIAR12/12BTL		1	Side	
083741000058	GROLSCH6/11.2BTL		1	Side	
083820123937	GUINNESSEXTRASTOUT6/12B...	Core	1	Side	
181954000022	PERONI6/11.2BTL		1	Side	
181954000046	PERONI12/11.2BTL		1	Side	

Name: 3_4	W:30.00 in	D:12.00 in			
UPC (12 Digit)	Name	Ast	HFaci...	Orientat...	
4005249004181	VELTINPILSENER4/16.9CAN		1	Front	
835609001116	TYSKIE4/16.9CAN		1	Front	
020507000112	BITBURGER4/16.9CAN(WRAP)		1	Front	
087600101153	CARLSBERG4/16.9CAN		1	Front	
869071000278	MONTAUKWAVECHASER4/6/1...		1	Front	

Name: 4_1	W:30.00 in	D:26.00 in			
UPC (12 Digit)	Name	Ast	HFaci...	Orientat...	
072890001528	HEINEKEN18/12BTL	New	1	Side	
072890000163	HEINEKEN12/12BTL	Core	2	Front	

Name: 4_2	W:30.00 in	D:22.00 in			
UPC (12 Digit)	Name	Ast	HFaci...	Orientat...	
072890001597	HEINEKENLIGHT12/12BTL	Core	1	Side	
072890006219	HEINEKEN0.0NEARBEER6/12B...		1	Side	
786150002001	STELLAARTOIS6/12CAN		1	Side	
786150000014	STELLAARTOIS6/11.2BTL	Core	1	Side	
786150000168	STELLAARTOIS12/11.2CAN	Core	1	Top 90	

Rite Aid
Store# 10577
BROOKLYN , NY

FINAL

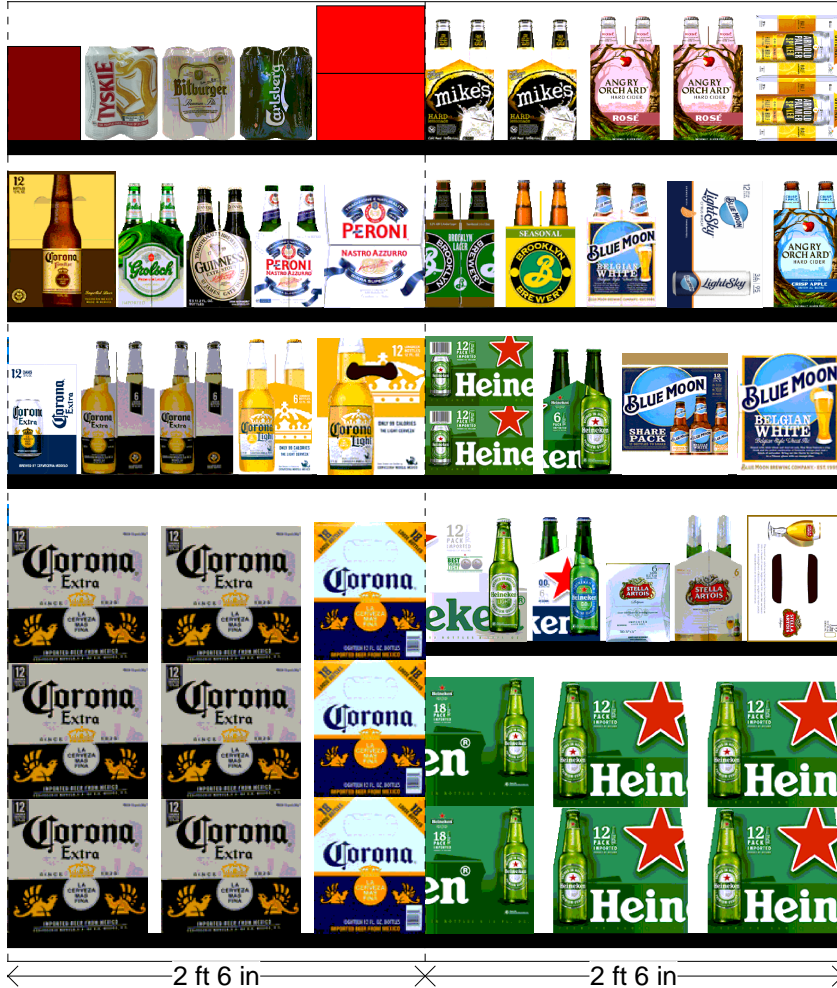
Cold

FMB always lead flow in relation to store traffic flow.
 Open a support ticket if planogram flow shown is reversed from actual store traffic flow

Segment 3 of 5 starting view

Shelf Schematic Report

RITE AID_10577 Store # 10577 # of segments: 5



Name: 4_3		W:30.00 in	D:22.00 in		
UPC (12 Digit)	Name	Ast	HFaci...	Orientat...	
072890000200	HEINEKEN12/12CAN	Core	1	Side 90	
072890000118	HEINEKEN6/12BTL	Core	1	Side	
071990095543	BLUEMOONBREWMASTERSVA...		1	Side	
071990095161	BLUEMOONBELGIANWHITE12/...	Core	1	Side	

Name: 4_4		W:30.00 in	D:22.00 in		
UPC (12 Digit)	Name	Ast	HFaci...	Orientat...	
030613000012	BROOKLYNLAGER6/12BTL		1	Side	
030613000531	BROOKLYNSEASONAL6/12BTL		1	Side	
071990095116	BLUEMOONBELGIANWHITE6/1...		1	Side	
071990095925	BLUEMOONLIGHTSKY12/12CAN	PRO...	1	Top 90	
087692821021	ANGRYORCHARDCRISPAPPL...		1	Side	

Name: 4_5		W:30.00 in	D:12.00 in		
UPC (12 Digit)	Name	Ast	HFaci...	Orientat...	
635985100621	MIKESHARDLEMONADE6/11.2...		2	Side	
087692006602	ANGRYORCHARDROSE6/12BTL		2	Side	
613008748333	ARNOLDPALMERSPIKEDHALF...		1	Side 90	

Rite Aid
Store# 10577
BROOKLYN , NY

FINAL

Cold

FMB always lead flow in relation to store traffic flow.
 Open a support ticket if planogram flow shown is reversed from actual store traffic flow

Segment 5 of 5 starting view

Shelf Schematic Report

RITE AID_10577 Store # 10577 # of segments: 5

Name: 5_1		W:30.00 in	D:26.00 in		
UPC (12 Digit)	Name	Ast	HFaci...	Orientat...	
786150000144	STELLAARTOIS12/11.2BTL	Core	1	Front	
082488123006	BECKS12/12BTL	Core	2	Front	

Name: 5_2		W:30.00 in	D:22.00 in		
UPC (12 Digit)	Name	Ast	HFaci...	Orientat...	
018200202506	BUDLIGHTPLATINUMSELTZER...	New	1	Side	
018200202087	BUDLIGHTSELTZERVARIETY1...	PRO...	1	Front 90	
635985800064	WHITECLAWVARIETY12/12CA...	PRO...	1	Front 90	
635985548904	WHITECLAWVARIETY12/12CA...	Core	2	Front 90	

Name: 5_3		W:30.00 in	D:22.00 in		
UPC (12 Digit)	Name	Ast	HFaci...	Orientat...	
071990000158	COORSHARDSELTZERVARIET...	New	1	Top 90	
033544000434	CORONASELTZERVARIETY12/...	PRO...	1	Front 90	
087692009917	TRULYLEMONADEVARIETY12/...	PRO...	1	Front 90	
087692006862	TRULYVARIETYBERRY12/12C...	Core	1	Front 90	
635985200253	WHITECLAWBLACKCHERRY6/...		1	Side	

Name: 5_4		W:30.00 in	D:22.00 in		
UPC (12 Digit)	Name	Ast	HFaci...	Orientat...	
018200250132	NATTYDADDY1/25CAN		1	Front	
071990100711	COORSBANQUET1/24CAN		1	Front	
071990300654	COORSLIGHT1/24CAN		1	Front	
018200250002	BUD1/25CAN		1	Front	
018200250019	BUDLIGHT1/25CAN		1	Front	
080660957210	MODELOESPECIAL1/24CAN		1	Front	
080660956435	CORONA1/24CAN		1	Front	
070897183315	FOSTERSPREMIUM1/25.4CAN		1	Front	
070897013315	FOSTERS1/25.4CAN		1	Front	

Name: 5_5		W:30.00 in	D:12.00 in		
UPC (12 Digit)	Name	Ast	HFaci...	Orientat...	
033544000137	CORONAVARIETYREFRESCA1...		2	Top 90	
034100012328	VIZZYVARIETY12/12CAN(A)	PRO...	2	Front 90	



2 ft 6 in

Rite Aid
Store# 10577
BROOKLYN , NY

Warm

FMB always lead flow in relation to store traffic flow.
Open a support ticket if planogram flow shown is reversed from actual store traffic flow



Rite Aid
Store# 10577
BROOKLYN , NY

FINAL

Warm

FMB always lead flow in relation to store traffic flow.
 Open a support ticket if planogram flow shown is reversed from actual store traffic flow

Segment 1 of 4 starting view

Shelf Schematic Report

RITE AID_10577 Store # 10577 # of segments: 4



Name: 2_1		W:144.00 in	D:18.50 in		
UPC (12 Digit)	Name	Ast	HFaci...	Orientat...	
022100001701	PABST12/12CAN		1	Side 90	
071990300173	COORSLIGHT18/12CAN	Core	1	Side 90	
071990300784	COORSLIGHT18/12BTL	Core	1	Side	
018200113086	BUD18/12BTL		2	Side	
080660957579	MODELOESPECIAL12/12BTL	Core	2	Side	
080660957159	MODELOESPECIAL12/12CAN	Core	1	Side 90	
033544950272	MODELOESPECIAL18/12BTL	Core	1	Side	

Name: 2_2		W:144.00 in	D:18.50 in		
UPC (12 Digit)	Name	Ast	HFaci...	Orientat...	
018200284434	NATURALLICE15/12CAN	Core	1	Side 90	
034100573409	LITE18/12CAN	Core	1	Side 90	
071990300692	COORSLIGHT12/12BTL	Core	1	Side	
071990000486	COORSLIGHT12/12CAN	New	1	Side 90	
018200112188	BUD18/12CAN	Core	1	Side 90	
018200532184	BUDLIGHT18/12CAN	Core	1	Side 90	
080660957111	MODELOESPECIAL18/12CAN	Core	1	Side 90	
080660957159	MODELOESPECIAL12/12CAN	Core	1	Side 90	
033544950449	CORONAPREMIER12/12CAN		1	Front 90	

Name: 2_3		W:144.00 in	D:18.50 in		
UPC (12 Digit)	Name	Ast	HFaci...	Orientat...	
018200200779	NATURALLIGHT15/12CAN	Core	1	Side 90	
071990480455	KEYSTONELIGHT15/12CAN		1	Side 90	
089924278962	YUENGLINGLAGER12/12BTL		1	Side	
018200007712	BUD12/12BTL		1	Side	
018200110474	BUD12/12CAN	Core	1	Top 90	
018200202018	BUDWEISERNITROGOLD12/12...	PRO...	1	Top 90	
018200530470	BUDLIGHT12/12CAN	Core	1	Top 90	
018200089893	BUDLIGHT8/16CAN		1	Top 90	
018200533082	BUDLIGHT18/12BTL		1	Side	
030613000746	BROOKLYNVARIETY12/12CAN		1	Top 90	
856632004288	BRONXVARIETY12/12CAN		1	Top 90	

Name: 2_4		W:144.00 in	D:18.50 in		
UPC (12 Digit)	Name	Ast	HFaci...	Orientat...	
071439344508	ROLLINGROCK12/12CAN		1	Side 90	
034100015091	HIGHLIFE12/12BTL	Core	1	Side	

Rite Aid
Store# 10577
BROOKLYN , NY

FINAL

Warm

FMB always lead flow in relation to store traffic flow.
 Open a support ticket if planogram flow shown is reversed from actual store traffic flow

Segment 1 of 4 starting view

Shelf Schematic Report

RITE AID_10577 Store # 10577		# of segments: 4	
034100576363	LITE12/12CAN	1	Top 90
034100575090	LITE12/12BTL	1	Side
754527009946	NEWBELGIUMVOODOOROTAT...	1	Side
856632004332	BRONXNORESOLUTIONS6/12...	1	Side
859093002435	SIXPOINTBENGALIIPA6/12CAN	1	Side
869071000278	MONTAUKWAVECHASER4/6/1...	1	Side
681745111123	BLUEPOINTTOASTEDLAGER6/...	2	Side
736920111327	GOOSEISLANDIPA6/12BTL	2	Side
071990095116	BLUEMOONBELGIANWHITE6/1...	1	Side

Name: 2_5		W:144.00 in		D:18.50 in	
UPC (12 Digit)	Name	Ast	HFaci...	Orientat...	
071439457123	ROLLINGROCK12/12BTL		1	Side	
034100016364	HIGHLIFE12/12CAN		1	Top 90	
087600101153	CARLSBERG4/16.9CAN		1	Side	
835609001116	TYSKIE4/16.9CAN		1	Front	
020507000112	BITBURGER4/16.9CAN(WRAP)		1	Front	
4005249004181	VELTINSPILSENER4/16.9CAN		1	Front	
752245141504	WEIHENSTEPHANHEFEWEISS...		2	Side	
018200199875	BUDLIGHTLIMELIME-A-RITA12/...		1	Top 90	
087692821021	ANGRYORCHARDCRISPAPPL...		2	Side	
087692006602	ANGRYORCHARDROSE6/12BTL		2	Side	



Rite Aid
Store# 10577
BROOKLYN , NY

FINAL

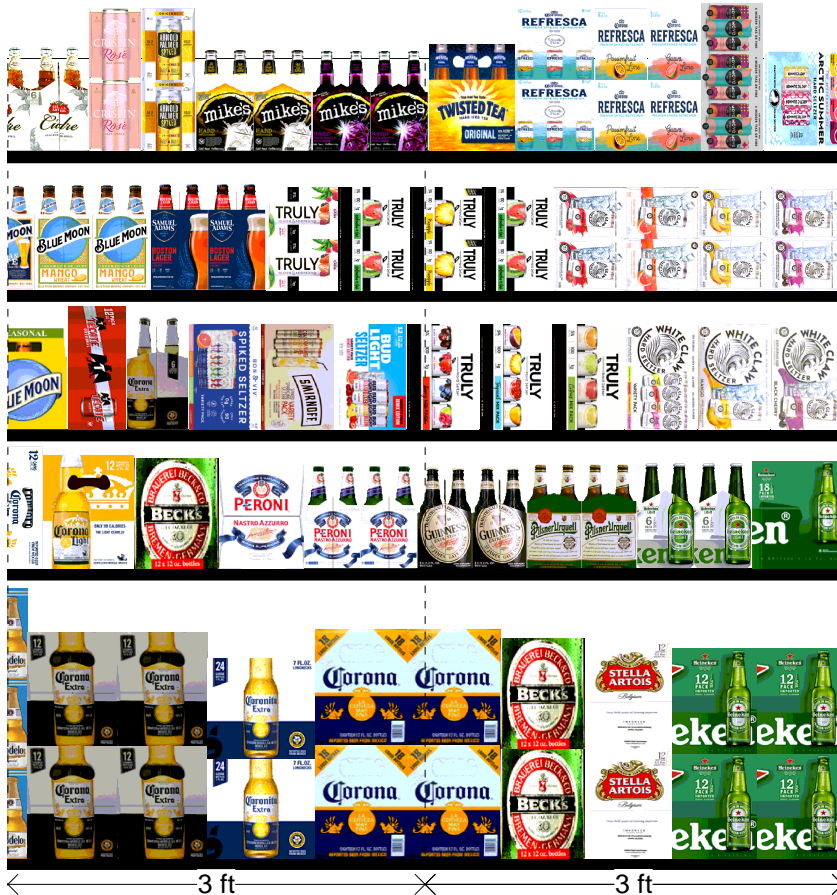
Warm

FMB always lead flow in relation to store traffic flow.
 Open a support ticket if planogram flow shown is reversed from actual store traffic flow

Segment 3 of 4 starting view

Shelf Schematic Report

RITE AID_10577 Store # 10577 # of segments: 4



Name: 2_1		W:144.00 in	D:18.50 in		
UPC (12 Digit)	Name	Ast	HFaci...	Orientat...	
080660956152	CORONA12/12BTL	Core	2	Side	
080660954080	CORONA24/7BTL	Core	1	Side	
080660956800	CORONA18/12BTL	Core	2	Side	
082488123006	BECKS12/12BTL	Core	1	Side	
786150000144	STELLAARTOIS12/11.2BTL	Core	1	Side	
072890000163	HEINEKEN12/12BTL	Core	2	Side	

Name: 2_2		W:144.00 in	D:18.50 in		
UPC (12 Digit)	Name	Ast	HFaci...	Orientat...	
080660956954	CORONA12/12CAN	Core	1	Top 90	
080660956756	CORONALIGHT12/12BTL	Core	1	Side	
082488123006	BECKS12/12BTL	Core	1	Side	
181954000046	PERONI12/11.2BTL		1	Side	
181954000022	PERONI6/11.2BTL		2	Side	
083820123937	GUINNESSEXTRASTOUT6/12B...	Core	2	Side	
072311630016	PILSNERURQUELL6/11.2BTL		2	Side	
072890001580	HEINEKENLIGHT6/12BTL		2	Side	
072890001528	HEINEKEN18/12BTL	New	1	Side	

Name: 2_3		W:144.00 in	D:18.50 in		
UPC (12 Digit)	Name	Ast	HFaci...	Orientat...	
071990095369	BLUEMOONSEASONAL12/12BTL		1	Side	
089826900336	TECATE12/12CAN		1	Top 90	
080660956053	CORONA6/12BTL	Core	1	Side	
853897002271	BONANDVIVSPIKEDSELTZERV...	Move	1	Front 90	
082000781424	SMIRNOFFSPIKEDSPARKLING...		1	Front 90	
018200202179	BUDLIGHTSELTZERVARIETYR...	New	1	Front 90	
087692006862	TRULYVARIETYBERRY12/12C...	Core	1	Front 90	
087692008040	TRULYVARIETYTROPICAL12/1...		1	Front 90	
087692004240	TRULYVARIETYCITRUS12/12C...		1	Front 90	
635985548904	WHITECLAWVARIETY12/12CA...	Core	1	Front 90	
635985100331	WHITECLAWMANGO12/12CAN		1	Front 90	
635985260899	WHITECLAWBLACKCHERRY12...		1	Front 90	

Name: 2_4		W:144.00 in	D:18.50 in		
UPC (12 Digit)	Name	Ast	HFaci...	Orientat...	
071990095611	BLUEMOONMANGOWHEAT6/1...		2	Side	
087692100126	SAMUELADAMS BOSTON LAGE...		2	Side	

Rite Aid
Store# 10577
BROOKLYN , NY

FINAL

Warm

FMB always lead flow in relation to store traffic flow.
 Open a support ticket if planogram flow shown is reversed from actual store traffic flow

Segment 3 of 4 starting view

Shelf Schematic Report

RITE AID_10577 Store # 10577		# of segments: 4	
087692006787	TRULYWILDBERRY6/12CAN	1	Side 90
087692009894	TRULYWATERMELONKIWI6/12...	PRO...	Side 90
087692009658	TRULYPINEAPPLE6/12CAN	PRO...	Side 90
087692009894	TRULYWATERMELONKIWI6/12...	PRO...	Side 90
635985260660	WHITECLAWRASPBERRY6/12...	1	Side 90
635985200284	WHITECLAWRUBYGRAPEFRUI...	1	Side 90
635985260875	WHITECLAWMANGO6/12CAN	1	Side 90
635985200253	WHITECLAWBLACKCHERRY6/...	1	Side 90

Name: 2_5		W:144.00 in	D:18.50 in		
UPC (12 Digit)	Name	Ast	HFaci...	Orientat...	
018200240010	STELLAARTOISCIDRE6/12BTL		2	Side	
894137002712	CRISPINROSE6/12CAN		1	Side	
613008748333	ARNOLDPALMERSPIKEDHALF...		1	Side	
635985100621	MIKESHARDLEMONADE6/11.2...		2	Side	
635985067443	MIKESHARDBLACKCHERRYLE...		2	Side	
087692831020	TWISTEDTEAORIGINAL6/12BTL		1	Front	
033544000137	CORONAVARIETYREFRESCA1...		1	Side	
033544950630	CORONAREFRESCAPASSION...		1	Side	
033544950678	CORONAREFRESCAGUAVALI...		1	Side	
034100012229	MOVOVARIETY4/8.4CAN		1	Side 90	
041827701121	ARCTICCHILLHARDSELTZERV...	PRO...	1	Top 90	

