

Rite Aid

Store# 4782

BROOKLYN , NY

Cold

FMB always lead flow in relation to store traffic flow.
Open a support ticket if planogram flow shown is reversed from actual store traffic flow



Rite Aid
Store# 4782
BROOKLYN , NY

FINAL

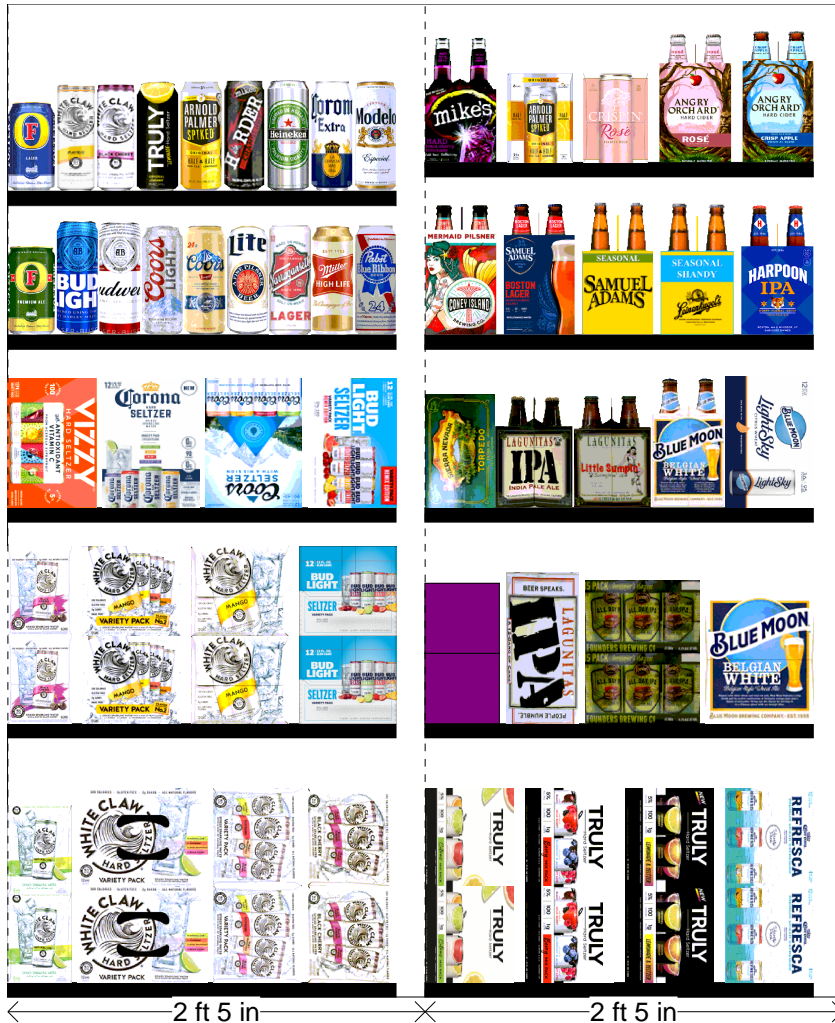
Cold

FMB always lead flow in relation to store traffic flow.
 Open a support ticket if planogram flow shown is reversed from actual store traffic flow

Segment 1 of 7 starting view

Shelf Schematic Report

RITE AID_4782 Store # 4782 # of segments: 7



| Name: 1_1 | | W:27.00 in | D:24.00 in | | |
|----------------|----------------------------|------------|------------|-------------|--|
| UPC (12 Digit) | Name | Ast | HFaci... | Orientat... | |
| 635985025986 | WHITECLAWNATURALLIME6/1... | | 1 | Side | |
| 63598548904 | WHITECLAWVARIETY12/12CA... | Core | 1 | Top | |
| 63598548904 | WHITECLAWVARIETY12/12CA... | Core | 1 | Side 90 | |
| 635985260899 | WHITECLAWBLACKCHERRY12... | | 1 | Side 90 | |

| Name: 1_2 | | W:27.00 in | D:24.00 in | | |
|----------------|----------------------------|------------|------------|-------------|--|
| UPC (12 Digit) | Name | Ast | HFaci... | Orientat... | |
| 635985200253 | WHITECLAWBLACKCHERRY6/... | | 1 | Side | |
| 635985800064 | WHITECLAWVARIETY12/12CA... | PRO... | 1 | Side | |
| 635985100331 | WHITECLAWMANGO12/12CAN | | 1 | Side | |
| 018200202087 | BUDLIGHTSELTZERVARIETY1... | PRO... | 1 | Side | |

| Name: 1_3 | | W:27.00 in | D:24.00 in | | |
|----------------|----------------------------|------------|------------|-------------|--|
| UPC (12 Digit) | Name | Ast | HFaci... | Orientat... | |
| 034100012328 | VIZZYVARIETY12/12CAN(A) | PRO... | 1 | Front 90 | |
| 033544000434 | CORONASELTZERVARIETY12/... | PRO... | 1 | Top 90 | |
| 071990000158 | COORSHARDSELTZERVARIET... | New | 1 | Top 90 | |
| 018200202179 | BUDLIGHTSELTZERVARIETYR... | New | 1 | Front 90 | |

| Name: 1_4 | | W:27.00 in | D:24.00 in | | |
|----------------|-------------------------|------------|------------|-------------|--|
| UPC (12 Digit) | Name | Ast | HFaci... | Orientat... | |
| 070897183315 | FOSTERSPREMIUM1/25.4CAN | | 1 | Front | |
| 018200250019 | BUDLIGHT1/25CAN | | 1 | Front | |
| 018200250002 | BUD1/25CAN | | 1 | Front | |
| 071990300654 | COORSLIGHT1/24CAN | | 1 | Front | |
| 071990100711 | COORSBANQUET1/24CAN | | 1 | Front | |
| 034100003555 | LITE1/24CAN | | 1 | Front | |
| 689076611756 | NARRAGANSETT1/24CAN | | 1 | Front | |
| 034100000059 | HIGHLIFE1/24CAN | | 1 | Front | |
| 022100000049 | PABST1/24CAN | | 1 | Front | |

| Name: 1_5 | | W:27.00 in | D:24.00 in | | |
|----------------|---------------------------|------------|------------|-------------|--|
| UPC (12 Digit) | Name | Ast | HFaci... | Orientat... | |
| 070897013315 | FOSTERS1/25.4CAN | | 1 | Front | |
| 635985260394 | WHITECLAWMANGO1/19.2CAN | PRO... | 1 | Front | |
| 635985260387 | WHITECLAWBLACKCHERRY1/... | | 1 | Front | |
| 087692010142 | TRULYLEMONADE1/24CAN | PRO... | 1 | Front | |
| 613008748296 | ARNOLDPALMERSPIKEDHALF... | | 1 | Front | |

Rite Aid

Store# 4782

BROOKLYN , NY

FINAL

Cold

FMB always lead flow in relation to store traffic flow.
Open a support ticket if planogram flow shown is reversed from actual store traffic flow

Segment 1 of 7 starting view

Shelf Schematic Report

| RITE AID_4782 | Store # 4782 | # of segments: 7 | | | |
|---------------|---------------------------|------------------|---|-------|--|
| 635985249856 | MIKESHARDERC Cranberry... | PRO... | 1 | Front | |
| 072890001191 | HEINEKEN 1/24CAN | | 1 | Front | |
| 080660956435 | CORONA 1/24CAN | | 1 | Front | |
| 080660957210 | MODELO ESPECIAL 1/24CAN | | 1 | Front | |

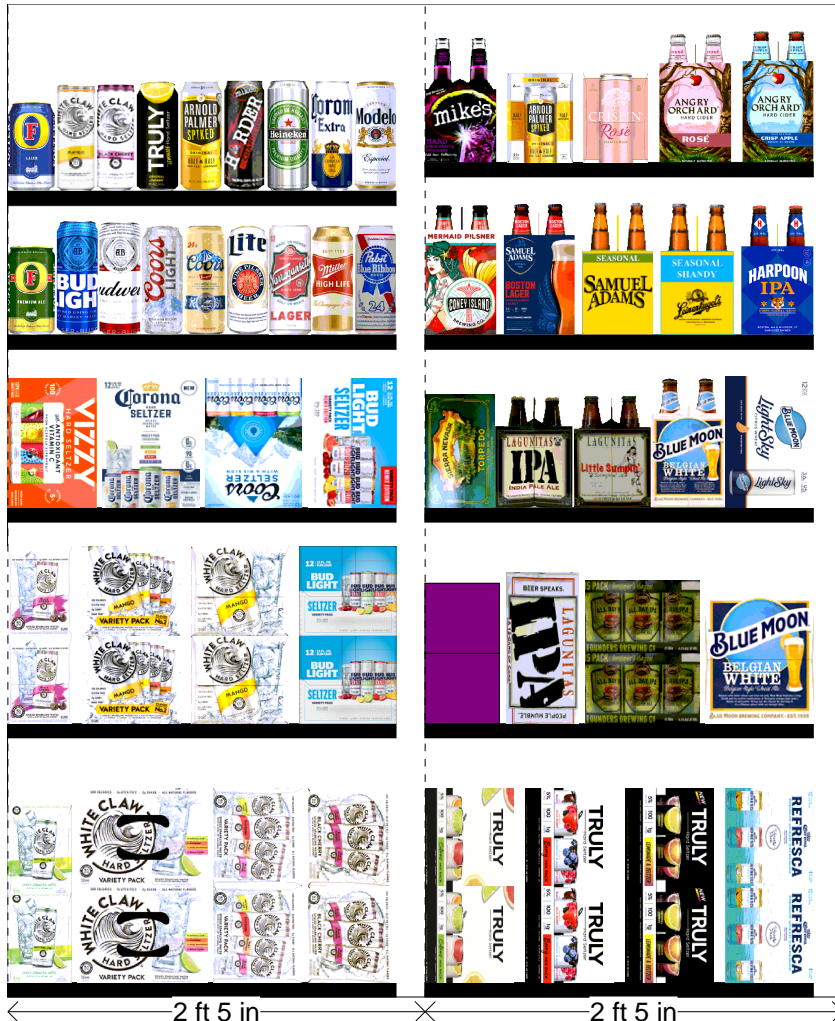
| Name: 2_1 | W:27.00 in | D:24.00 in | | | |
|----------------|--------------------------------|------------|----------|-------------|--|
| UPC (12 Digit) | Name | Ast | HFaci... | Orientat... | |
| 087692004240 | TRULY VARIETY CITRUS 12/12C... | | 1 | Side 90 | |
| 087692006862 | TRULY VARIETY BERRY 12/12C... | Core | 1 | Side 90 | |
| 087692009917 | TRULY LEMONADE VARIETY 12/... | PRO... | 1 | Side 90 | |
| 033544000137 | CORONA VARIETY REFRESCA 1... | | 1 | Side 90 | |

| Name: 2_2 | W:27.00 in | D:24.00 in | | | |
|----------------|--------------------------------|------------|----------|-------------|--|
| UPC (12 Digit) | Name | Ast | HFaci... | Orientat... | |
| 018200202506 | BUD LIGHT PLATINUM SELTZER... | New | 1 | Side | |
| 723830212121 | LAGUNITAS IPA 12/12CAN | | 1 | Top 90 | |
| 642860900245 | FOUNDERS ALL DAY SESSION I... | | 1 | Side 90 | |
| 071990095161 | BLUE MOON BELGIAN WHITE 12/... | Core | 1 | Side | |

| Name: 2_3 | W:27.00 in | D:24.00 in | | | |
|----------------|--------------------------------|------------|----------|-------------|--|
| UPC (12 Digit) | Name | Ast | HFaci... | Orientat... | |
| 083783381023 | SIERRA NEVADA TORPEDO IPA... | | 1 | Side | |
| 723830000094 | LAGUNITAS IPA 6/12BTL | | 1 | Side | |
| 723830000209 | LAGUNITAS LITTLE SUMPIN 6/1... | | 1 | Side | |
| 071990095116 | BLUE MOON BELGIAN WHITE 6/1... | | 1 | Side | |
| 071990095925 | BLUE MOON LIGHT SKY 12/12CAN | PRO... | 1 | Front 90 | |

| Name: 2_4 | W:27.00 in | D:24.00 in | | | |
|----------------|---------------------------------|------------|----------|-------------|--|
| UPC (12 Digit) | Name | Ast | HFaci... | Orientat... | |
| 887151000949 | CONEY ISLAND MERMAID PILS... | | 1 | Side | |
| 087692100126 | SAMUEL ADAMS BOSTON LAGE... | | 1 | Side | |
| 087692300502 | SAMUEL ADAMS SEASONAL 6/1... | | 1 | Side | |
| 034100516055 | LEINIESE SEASONAL PRIMARY 6/... | | 1 | Side | |
| 041827000767 | HARPOON IPA 6/12BTL | | 1 | Side | |

| Name: 2_5 | W:27.00 in | D:24.00 in | | | |
|----------------|------------------------------|------------|----------|-------------|--|
| UPC (12 Digit) | Name | Ast | HFaci... | Orientat... | |
| 635985067443 | MIKESHARD BLACK CHERRY LE... | | 1 | Side | |
| 613008748333 | ARNOLD PALMER SPIKED HALF... | | 1 | Side | |
| 894137002712 | CRISP IN ROSE 6/12CAN | | 1 | Side | |
| 087692006602 | ANGRY ORCHARD ROSE 6/12BTL | | 1 | Side | |



← 2 ft 5 in

→ 2 ft 5 in

Rite Aid
Store# 4782
BROOKLYN , NY

FINAL Cold FMB always lead flow in relation to store traffic flow.
Open a support ticket if planogram flow shown is reversed from actual store traffic flow Segment 1 of 7 starting view

Shelf Schematic Report

RITE AID_4782 Store # 4782 # of segments: 7
 087692821021 ANGRYORCHARDCRISPAPPL... 1 Side



Rite Aid
Store# 4782
BROOKLYN , NY

FINAL

Cold

FMB always lead flow in relation to store traffic flow.
 Open a support ticket if planogram flow shown is reversed from actual store traffic flow

Segment 3 of 7 starting view

Shelf Schematic Report

RITE AID_4782 Store # 4782 # of segments: 7



| Name: 3_1 | | W:27.00 in | D:24.00 in | | |
|----------------|------------------|------------|------------|-------------|--|
| UPC (12 Digit) | Name | Ast | HFaci... | Orientat... | |
| 072890001528 | HEINEKEN18/12BTL | New | 1 | Side | |
| 072890000163 | HEINEKEN12/12BTL | Core | 1 | Front | |
| 082488123006 | BECKS12/12BTL | Core | 1 | Side | |

| Name: 3_2 | | W:27.00 in | D:24.00 in | | |
|----------------|-----------------------------|------------|------------|-------------|--|
| UPC (12 Digit) | Name | Ast | HFaci... | Orientat... | |
| 072890000200 | HEINEKEN12/12CAN | Core | 1 | Side | |
| 072890000422 | HEINEKEN6/7BTL | | 1 | Side | |
| 072890000118 | HEINEKEN6/12BTL | Core | 1 | Side | |
| 072890006219 | HEINEKEN0.0NEARBEER6/12B... | | 1 | Side | |
| 181954000046 | PERONI12/11.2BTL | | 1 | Side | |

| Name: 3_3 | | W:27.00 in | D:24.00 in | | |
|----------------|----------------------------|------------|------------|-------------|--|
| UPC (12 Digit) | Name | Ast | HFaci... | Orientat... | |
| 030613040667 | BROOKLYNSPECIALEFFECTS... | PRO... | 1 | Side | |
| 030613000746 | BROOKLYNVARIETY12/12CAN | | 1 | Top 90 | |
| 856632004288 | BRONXVARIETY12/12CAN | | 1 | Top 90 | |
| 740522100832 | BELLSTWOHEARTEDALE6/12B... | | 1 | Side | |
| 181954000022 | PERONI6/11.2BTL | | 1 | Side | |

| Name: 3_4 | | W:27.00 in | D:24.00 in | | |
|----------------|------------------------------|------------|------------|-------------|--|
| UPC (12 Digit) | Name | Ast | HFaci... | Orientat... | |
| 030613000531 | BROOKLYNSEASONAL6/12BTL | | 1 | Side | |
| 030613000012 | BROOKLYNLAGER6/12BTL | | 1 | Side | |
| 859093002428 | SIXPOINTSWEEETACTION6/12C... | | 1 | Side | |
| 859093002442 | SIXPOINTTHECRISP6/12CAN | | 1 | Side | |
| 859093002435 | SIXPOINTBENGALIIPA6/12CAN | | 1 | Side | |

| Name: 3_5 | | W:27.00 in | D:24.00 in | | |
|----------------|----------------------------|------------|------------|-------------|--|
| UPC (12 Digit) | Name | Ast | HFaci... | Orientat... | |
| 862737000063 | MONTAUKSUMMER6/12CAN(W... | | 1 | Side | |
| 862737000070 | MONTAUKSESSIONIPA6/12CA... | | 1 | Side | |
| 869071000278 | MONTAUKWAVECHASER4/6/1... | | 1 | Side | |
| 856632004332 | BRONXNORESOLUTIONS6/12... | | 1 | Side | |
| 859612001031 | 21STAMENDMENTBREWFREE... | | 1 | Side | |

| Name: 4_1 | | W:27.00 in | D:24.00 in | | |
|----------------|------|------------|------------|-------------|--|
| UPC (12 Digit) | Name | Ast | HFaci... | Orientat... | |

Rite Aid
Store# 4782
BROOKLYN , NY

FINAL

Cold

FMB always lead flow in relation to store traffic flow.
 Open a support ticket if planogram flow shown is reversed from actual store traffic flow

Segment 3 of 7 starting view

Shelf Schematic Report

| RITE AID_4782 | Store # 4782 | # of segments: 7 | | | |
|---------------|------------------------|------------------|---|-------|--|
| 786150000144 | STELLAARTOIS12/11.2BTL | Core | 1 | Side | |
| 080660956152 | CORONA12/12BTL | Core | 1 | Front | |
| 080660956152 | CORONA12/12BTL | Core | 1 | Side | |

| Name: 4 2 | | W:27.00 in | D:24.00 in | | | |
|----------------|----------------------------|------------|------------|-------------|--|--|
| UPC (12 Digit) | Name | Ast | HFaci... | Orientat... | | |
| 786150000168 | STELLAARTOIS12/11.2CAN | Core | 1 | Front 90 | | |
| 083820123937 | GUINNESSEXTRASTOUT6/12B... | Core | 1 | Side | | |
| 083820104011 | GUINNESSDRAUGHTSTOUT6/... | | 1 | Side | | |
| 080660956954 | CORONA12/12CAN | Core | 1 | Top 90 | | |
| 080660956053 | CORONA6/12BTL | Core | 1 | Side | | |

| Name: 4 3 | | W:27.00 in | D:24.00 in | | | |
|----------------|--------------------------|------------|------------|-------------|--|--|
| UPC (12 Digit) | Name | Ast | HFaci... | Orientat... | | |
| 736920111327 | GOOSEISLANDIPA6/12BTL | | 1 | Side | | |
| 786150000014 | STELLAARTOIS6/11.2BTL | Core | 1 | Side | | |
| 786150002001 | STELLAARTOIS6/12CAN | | 1 | Side | | |
| 083820567939 | REDSTRIPELAGER6/11.2BTL | New | 1 | Side | | |
| 042572040060 | SCHOFFERHOFERGRAPEFRU... | | 1 | Side | | |

| Name: 4 4 | | W:27.00 in | D:24.00 in | | | |
|----------------|--------------------------|------------|------------|-------------|--|--|
| UPC (12 Digit) | Name | Ast | HFaci... | Orientat... | | |
| 087600101153 | CARLSBERG4/16.9CAN | | 1 | Front | | |
| 020507000112 | BITBURGER4/16.9CAN(WRAP) | | 1 | Front | | |
| 4005249004181 | VELTINSPILSENER4/16.9CAN | | 1 | Front | | |
| 087600100750 | OKOCIMFULLPALE4/16.9CAN | | 1 | Front | | |
| 835609001116 | TYSKIE4/16.9CAN | | 1 | Front | | |



Rite Aid
Store# 4782
BROOKLYN , NY

FINAL

Cold

FMB always lead flow in relation to store traffic flow.
 Open a support ticket if planogram flow shown is reversed from actual store traffic flow

Segment 5 of 7 starting view

Shelf Schematic Report

RITE AID_4782 Store # 4782 # of segments: 7



| Name: 5_1 | W:27.00 in | D:24.00 in | | | |
|----------------|----------------|------------|----------|-------------|--|
| UPC (12 Digit) | Name | Ast | HFaci... | Orientat... | |
| 080660956800 | CORONA18/12BTL | Core | 2 | Side | |
| 080660954080 | CORONA24/7BTL | Core | 1 | Side | |

| Name: 5_2 | W:27.00 in | D:24.00 in | | | |
|----------------|------------------------|------------|----------|-------------|--|
| UPC (12 Digit) | Name | Ast | HFaci... | Orientat... | |
| 080660956756 | CORONALIGHT12/12BTL | Core | 1 | Side | |
| 033544000182 | CORONAPREMIER18/12BTL | | 1 | Side | |
| 033544950272 | MODELOESPECIAL18/12BTL | Core | 1 | Side | |

| Name: 5_3 | W:27.00 in | D:24.00 in | | | |
|----------------|------------------------|------------|----------|-------------|--|
| UPC (12 Digit) | Name | Ast | HFaci... | Orientat... | |
| 080660956251 | CORONALIGHT6/12BTL | | 1 | Side | |
| 033544950425 | CORONAPREMIER12/12BTL | Core | 1 | Side | |
| 080660957579 | MODELOESPECIAL12/12BTL | Core | 1 | Front | |

| Name: 5_4 | W:27.00 in | D:24.00 in | | | |
|----------------|------------------------|------------|----------|-------------|--|
| UPC (12 Digit) | Name | Ast | HFaci... | Orientat... | |
| 080660956213 | CORONALIGHT12/12CAN | | 1 | Top 90 | |
| 033544950449 | CORONAPREMIER12/12CAN | | 1 | Top 90 | |
| 033544950418 | CORONAPREMIER6/12BTL | | 1 | Side | |
| 033544950531 | CORONAFAMILIAR12/12BTL | | 1 | Side | |

| Name: 5_5 | W:27.00 in | D:24.00 in | | | |
|----------------|----------------------------|------------|----------|-------------|--|
| UPC (12 Digit) | Name | Ast | HFaci... | Orientat... | |
| 082054104545 | WARSTEINERPREMIUM6/11.2... | | 1 | Side | |
| 089826900336 | TECATE12/12CAN | | 1 | Top | |
| 080660958811 | VICTORIA6/12BTL | | 1 | Side | |
| 080660953014 | PACIFICO6/12BTL | | 1 | Side | |

| Name: 6_1 | W:27.00 in | D:24.00 in | | | |
|----------------|------------------------|------------|----------|-------------|--|
| UPC (12 Digit) | Name | Ast | HFaci... | Orientat... | |
| 080660957159 | MODELOESPECIAL12/12CAN | Core | 1 | Side 90 | |
| 080660957111 | MODELOESPECIAL18/12CAN | Core | 1 | Side 90 | |
| 018200532184 | BUDLIGHT18/12CAN | Core | 1 | Side | |
| 018200112188 | BUD18/12CAN | Core | 1 | Side | |

| Name: 6_2 | W:27.00 in | D:24.00 in | | | |
|----------------|------------|------------|----------|-------------|--|
| UPC (12 Digit) | Name | Ast | HFaci... | Orientat... | |
| | | | | | |

Rite Aid
Store# 4782
BROOKLYN , NY

FINAL

Cold

FMB always lead flow in relation to store traffic flow.
 Open a support ticket if planogram flow shown is reversed from actual store traffic flow

Segment 5 of 7 starting view

Shelf Schematic Report

| RITE AID_4782 Store # 4782 # of segments: 7 | | | | |
|---|------------------------|------|---|----------|
| 033544950272 | MODELOESPECIAL18/12BTL | Core | 1 | Side |
| 018200967214 | MICHELOBULTRA18/12CAN | | 1 | Side |
| 018200089893 | BUDLIGHT8/16CAN | | 1 | Front 90 |
| 018200089817 | BUD8/16CAN | | 1 | Front 90 |

| Name: 6_3 W:27.00 in D:24.00 in | | | | |
|---------------------------------|-----------------------|--------|----------|-------------|
| UPC (12 Digit) | Name | Ast | HFaci... | Orientat... |
| 033544000212 | MODELOESPECIAL24/7BTL | PRO... | 1 | Front |
| 018200530470 | BUDLIGHT12/12CAN | Core | 1 | Top 90 |
| 018200110474 | BUD12/12CAN | Core | 1 | Top 90 |

| Name: 6_4 W:27.00 in D:24.00 in | | | | |
|---------------------------------|---------------------------|--------|----------|-------------|
| UPC (12 Digit) | Name | Ast | HFaci... | Orientat... |
| 080660957654 | MODELOESPECIAL6/12BTL | | 1 | Side |
| 613008752200 | ARNOLDPALMERSPIKEDHALF... | New | 1 | Front 90 |
| 018200059902 | MICHELOBULTRA12/12BTL | | 1 | Side |
| 018200201448 | MICHELOBULTRAPUREGOLD1... | PRO... | 1 | Front 90 |

| Name: 6_5 W:27.00 in D:24.00 in | | | | |
|---------------------------------|-----------------------------|--------|----------|-------------|
| UPC (12 Digit) | Name | Ast | HFaci... | Orientat... |
| 080660957555 | MODELOESPECIAL6/12CAN | | 1 | Side |
| 018200069918 | MICHELOBULTRA12/12CAN | PRO... | 1 | Front |
| 018200202100 | BUDLIGHTPEELSVARIETY12/1... | PRO... | 1 | Front 90 |
| 089924278986 | YUENGLINGLAGER12/12CAN | | 1 | Top 90 |



Rite Aid
Store# 4782
BROOKLYN , NY

FINAL

Cold

FMB always lead flow in relation to store traffic flow.
 Open a support ticket if planogram flow shown is reversed from actual store traffic flow

Segment 7 of 7 starting view

Shelf Schematic Report

RITE AID_4782 Store # 4782 # of segments: 7

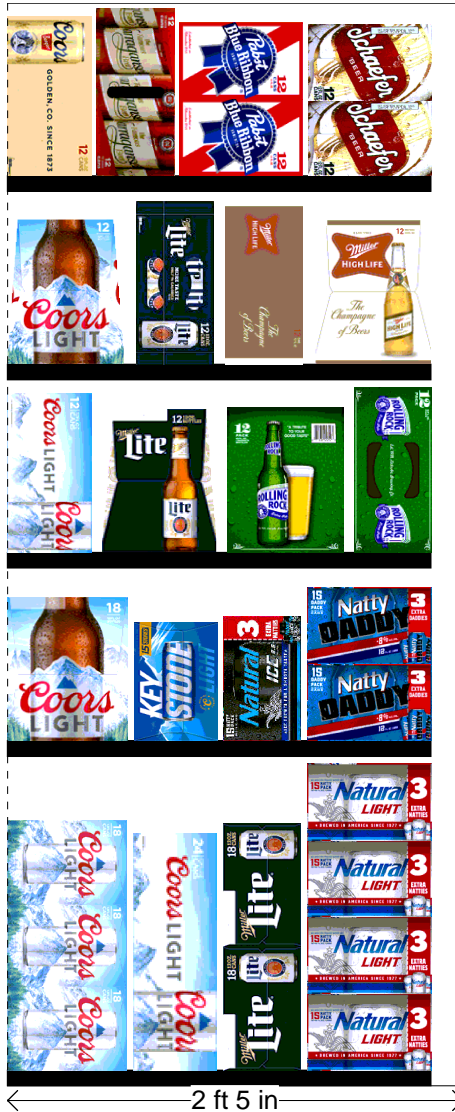
| Name: 7_1 | | W:27.00 in | D:24.00 in | | |
|----------------|----------------------|------------|------------|-------------|--|
| UPC (12 Digit) | Name | Ast | HFaci... | Orientat... | |
| 071990300173 | COORSLIGHT18/12CAN | Core | 1 | Side 90 | |
| 071990316006 | COORSLIGHT24/12CAN | | 1 | Top 90 | |
| 034100573409 | LITE18/12CAN | Core | 1 | Side | |
| 018200200779 | NATURALLIGHT15/12CAN | Core | 1 | Side 90 | |

| Name: 7_2 | | W:27.00 in | D:24.00 in | | |
|----------------|-----------------------|------------|------------|-------------|--|
| UPC (12 Digit) | Name | Ast | HFaci... | Orientat... | |
| 071990300784 | COORSLIGHT18/12BTL | Core | 1 | Side | |
| 071990480455 | KEYSTONELIGHT15/12CAN | | 1 | Side | |
| 018200284434 | NATURALICE15/12CAN | Core | 1 | Side | |
| 018200200786 | NATTYDADDY15/12CAN | | 1 | Side 90 | |

| Name: 7_3 | | W:27.00 in | D:24.00 in | | |
|----------------|---------------------|------------|------------|-------------|--|
| UPC (12 Digit) | Name | Ast | HFaci... | Orientat... | |
| 071990000486 | COORSLIGHT12/12CAN | New | 1 | Top 90 | |
| 034100575090 | LITE12/12BTL | | 1 | Side | |
| 071439457123 | ROLLINGROCK12/12BTL | | 1 | Side | |
| 071439344508 | ROLLINGROCK12/12CAN | | 1 | Top 90 | |

| Name: 7_4 | | W:27.00 in | D:24.00 in | | |
|----------------|--------------------|------------|------------|-------------|--|
| UPC (12 Digit) | Name | Ast | HFaci... | Orientat... | |
| 071990300692 | COORSLIGHT12/12BTL | Core | 1 | Side | |
| 034100576363 | LITE12/12CAN | | 1 | Top 90 | |
| 034100016364 | HIGHLIFE12/12CAN | | 1 | Top 90 | |
| 034100015091 | HIGHLIFE12/12BTL | Core | 1 | Side | |

| Name: 7_5 | | W:27.00 in | D:24.00 in | | |
|----------------|----------------------|------------|------------|-------------|--|
| UPC (12 Digit) | Name | Ast | HFaci... | Orientat... | |
| 071990000479 | COORSBANQUET12/12CAN | | 1 | Top 90 | |
| 070310001417 | NARRAGANSETT12/12CAN | | 1 | Top 90 | |
| 022100001701 | PABST12/12CAN | | 1 | Side 90 | |
| 072480024036 | SCHAEFER12/12CAN | | 1 | Side 90 | |



2 ft 5 in

Rite Aid
Store# 4782
BROOKLYN , NY

FINAL

Cold;Warm

FMB always lead flow in relation to store traffic flow.
 Open a support ticket if planogram flow shown is reversed from actual store traffic flow

Segment 1 of 3 starting view

Shelf Schematic Report

RITE AID_4782 Store # 4782 # of segments: 3



| Name: 1_1 | | W:144.00 in | D:14.00 in | | |
|----------------|----------------------------|-------------|------------|-------------|--|
| UPC (12 Digit) | Name | Ast | HFaci... | Orientat... | |
| 635985548904 | WHITECLAWVARIETY12/12CA... | Core | 1 | Side 90 | |
| 635985800064 | WHITECLAWVARIETY12/12CA... | PRO... | 2 | Side 90 | |
| 087692009917 | TRULYLEMONADEVARIETY12/... | PRO... | 1 | Side 90 | |
| 087692006862 | TRULYVARIETYBERRY12/12C... | Core | 1 | Front 90 | |
| 033544000434 | CORONASELTZERVARIETY12/... | PRO... | 1 | Side 90 | |
| 018200202087 | BUDLIGHTSELTZERVARIETY1... | PRO... | 1 | Side 90 | |
| 018200202179 | BUDLIGHTSELTZERVARIETYR... | New | 1 | Side 90 | |
| 072890000163 | HEINEKEN12/12BTL | Core | 1 | Side | |
| 786150000144 | STELLAARTOIS12/11.2BTL | Core | 1 | Side | |
| 080660956152 | CORONA12/12BTL | Core | 1 | Front | |
| 080660954080 | CORONA24/7BTL | Core | 1 | Side | |
| 080660956756 | CORONALIGHT12/12BTL | Core | 1 | Side | |

| Name: 2_5 | | W:48.00 in | D:14.00 in | | |
|----------------|-----------------------------|------------|------------|-------------|--|
| UPC (12 Digit) | Name | Ast | HFaci... | Orientat... | |
| 635985100331 | WHITECLAWMANGO12/12CAN | | 2 | Top 90 | |
| 087692004240 | TRULYVARIETYCITRUS12/12C... | | 2 | Top 90 | |
| 071990000158 | COORSHARDSELTZERVARIET... | New | 1 | Front 90 | |
| 853897002271 | BONANDVIVSPIKEDSELTZERV... | Move | 1 | Front 90 | |
| 034100012229 | MOVOVARIETY4/8.4CAN | | 2 | Side | |

| Name: 2_4 | | W:144.00 in | D:14.00 in | | |
|----------------|-----------------------------|-------------|------------|-------------|--|
| UPC (12 Digit) | Name | Ast | HFaci... | Orientat... | |
| 635985260899 | WHITECLAWBLACKCHERRY12... | | 2 | Top 90 | |
| 087692008040 | TRULYVARIETYTROPICAL12/1... | | 2 | Top 90 | |
| 034100012328 | VIZZYVARIETY12/12CAN(A) | PRO... | 2 | Front 90 | |
| 033544000137 | CORONAVARIETYREFRESCA1... | | 1 | Front 90 | |
| 083820567939 | REDSTRIPELAGER6/11.2BTL | New | 2 | Front | |
| 723830212121 | LAGUNITASIPA12/12CAN | | 1 | Side 90 | |
| 642860900245 | FOUNDERSALLDAYSESSIONI... | | 1 | Side 90 | |
| 859989005168 | GREENPORTHARBOROTHERS... | | 2 | Side | |
| 071990095925 | BLUEMOONLIGHTSKY12/12CAN | PRO... | 1 | Front 90 | |

| Name: 2_1 | | W:144.00 in | D:14.00 in | | |
|----------------|---------------------------|-------------|------------|-------------|--|
| UPC (12 Digit) | Name | Ast | HFaci... | Orientat... | |
| 635985200284 | WHITECLAWRUBYGRAPEFRUI... | | 1 | Top 90 | |
| 635985260875 | WHITECLAWMANGO6/12CAN | | 1 | Top 90 | |
| 635985260660 | WHITECLAWRASPBERRY6/12... | | 1 | Top 90 | |

Rite Aid
Store# 4782
BROOKLYN , NY

FINAL

Cold;Warm

FMB always lead flow in relation to store traffic flow.
 Open a support ticket if planogram flow shown is reversed from actual store traffic flow

Segment 1 of 3 starting view

Shelf Schematic Report

| RITE AID_4782 | Store # 4782 | # of segments: 3 | | |
|---------------|----------------------------|------------------|---|--------|
| 635985025986 | WHITECLAWNATURALLIME6/1... | | 1 | Top 90 |
| 635985200253 | WHITECLAWBLACKCHERRY6/... | | 1 | Top 90 |
| 087692004172 | TRULYCOLIMALIME6/12CAN | | 1 | Top 90 |
| 087692009658 | TRULYPINEAPPLE6/12CAN | PRO... | 1 | Side |
| 087692006787 | TRULYWILDBERRY6/12CAN | | 1 | Top 90 |
| 033544950678 | CORONAREFRESGUAVALI... | | 1 | Top 90 |
| 033544950630 | CORONAREFRESCAPASSION... | | 1 | Top 90 |
| 851464003089 | REVOLUTIONANTIHERO6/12C... | | 1 | Side |
| 030613000302 | BROOKLYNLAGER6/12CAN | | 1 | Side |
| 754527009946 | NEWBELGIUMWOODOOROTAT... | | 1 | Side |
| 859093002466 | SIXPOINTRESINIIPA6/12CAN | | 1 | Side |
| 859093002442 | SIXPOINTTHECRISP6/12CAN | | 1 | Side |
| 859093002435 | SIXPOINTBENGALIIPA6/12CAN | | 1 | Side |
| 636251740947 | STONEIPA12/12CAN | | 1 | Top 90 |
| 030613000388 | BROOKLYNLAGER12/12CAN | | 1 | Top 90 |
| 030613000746 | BROOKLYNVARIETY12/12CAN | | 1 | Top 90 |
| 887151000949 | CONEYISLANDMERMAIDPILS... | | 1 | Side |

| Name: 2_2 | | W:96.00 in | D:14.00 in | | |
|----------------|---------------------------|------------|------------|-------------|--|
| UPC (12 Digit) | Name | Ast | HFaci... | Orientat... | |
| 072890001597 | HEINEKENLIGHT12/12BTL | Core | 1 | Side | |
| 786150000014 | STELLAARTOIS6/11.2BTL | Core | 1 | Front | |
| 080660956152 | CORONA12/12BTL | Core | 1 | Front | |
| 080660956954 | CORONA12/12CAN | Core | 1 | Side 90 | |
| 080660957159 | MODELOESPECIAL12/12CAN | Core | 1 | Side 90 | |
| 018200201448 | MICHELOBULTRAPUREGOLD1... | PRO... | 1 | Front 90 | |

| Name: 2_3 | | W:96.00 in | D:14.00 in | | |
|----------------|-----------------------|------------|------------|-------------|--|
| UPC (12 Digit) | Name | Ast | HFaci... | Orientat... | |
| 072890001597 | HEINEKENLIGHT12/12BTL | Core | 1 | Side | |
| 786150000014 | STELLAARTOIS6/11.2BTL | Core | 1 | Front | |
| 080660956053 | CORONA6/12BTL | Core | 2 | Front | |
| 080660957654 | MODELOESPECIAL6/12BTL | | 1 | Front | |
| 080660957654 | MODELOESPECIAL6/12BTL | | 1 | Side | |



Rite Aid
Store# 4782
BROOKLYN , NY

FINAL

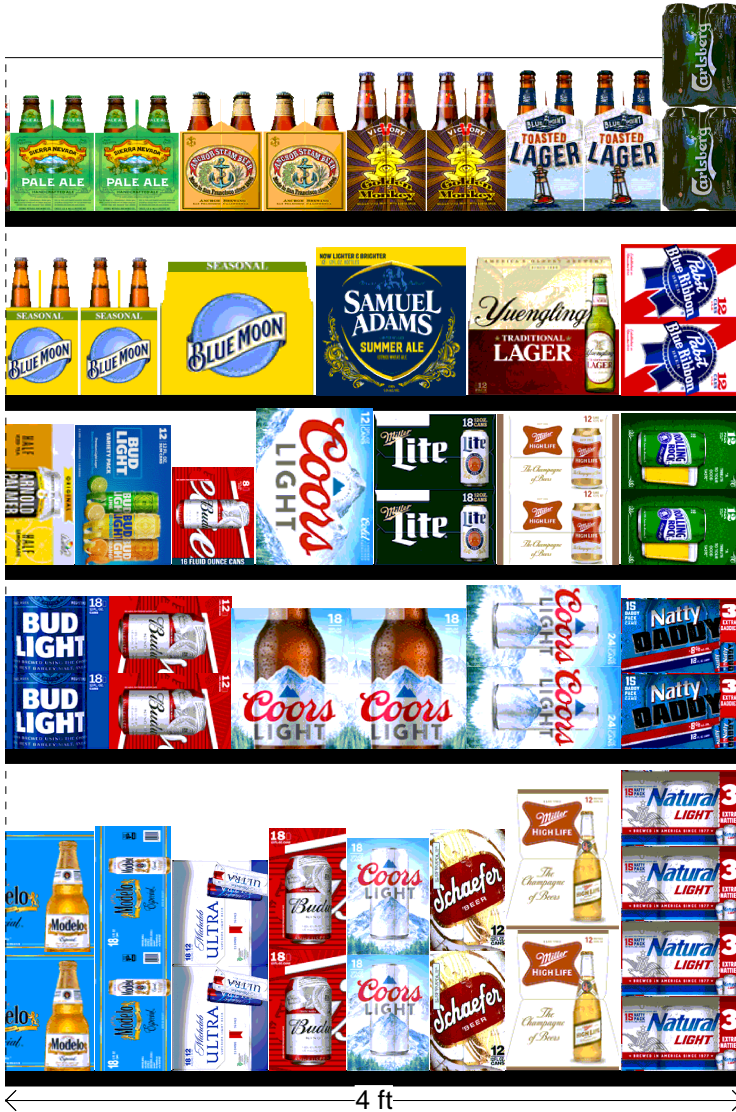
Cold;Warm

FMB always lead flow in relation to store traffic flow.
 Open a support ticket if planogram flow shown is reversed from actual store traffic flow

Segment 3 of 3 starting view

Shelf Schematic Report

RITE AID_4782 Store # 4782 # of segments: 3



| Name: 1_1 | | W:144.00 in | D:14.00 in | | |
|----------------|------------------------|-------------|------------|-------------|--|
| UPC (12 Digit) | Name | Ast | HFaci... | Orientat... | |
| 080660957579 | MODELOESPECIAL12/12BTL | Core | 1 | Side | |
| 080660957111 | MODELOESPECIAL18/12CAN | Core | 1 | Side | |
| 018200967214 | MICHELOBULTRA18/12CAN | | 1 | Side | |
| 018200112188 | BUD18/12CAN | Core | 1 | Side | |
| 071990300173 | COORSLIGHT18/12CAN | Core | 1 | Side | |
| 072480024036 | SCHAEFER12/12CAN | | 1 | Side | |
| 034100015091 | HIGHLIFE12/12BTL | Core | 1 | Side | |
| 018200200779 | NATURALLIGHT15/12CAN | Core | 1 | Side 90 | |

| Name: 2_4 | | W:144.00 in | D:14.00 in | | |
|----------------|---------------------------|-------------|------------|-------------|--|
| UPC (12 Digit) | Name | Ast | HFaci... | Orientat... | |
| 071990095321 | BLUEMOONSEASONAL6/12BTL | | 2 | Side | |
| 071990095369 | BLUEMOONSEASONAL12/12BTL | | 1 | Front | |
| 087692011033 | SAMUELADAMSSEASONAL12/... | | 1 | Front | |
| 089924278962 | YUENGLINGLAGER12/12BTL | | 1 | Front | |
| 022100001701 | PABST12/12CAN | | 1 | Side 90 | |

| Name: 2_1 | | W:144.00 in | D:14.00 in | | |
|----------------|----------------------------|-------------|------------|-------------|--|
| UPC (12 Digit) | Name | Ast | HFaci... | Orientat... | |
| 083783375213 | SIERRANEVADAPALEALE6/12... | | 2 | Side | |
| 072783001000 | ANCHORSTEAMBEER6/12BTL | | 2 | Side | |
| 630279465066 | VICTORYGOLDENMONKEY6/1... | | 2 | Side | |
| 681745111123 | BLUEPOINTTOASTEDLAGER6/... | | 2 | Side | |
| 087600101153 | CARLSBERG4/16.9CAN | | 1 | Front | |

| Name: 2_2 | | W:96.00 in | D:14.00 in | | |
|----------------|--------------------|------------|------------|-------------|--|
| UPC (12 Digit) | Name | Ast | HFaci... | Orientat... | |
| 018200532184 | BUDLIGHT18/12CAN | Core | 1 | Side 90 | |
| 018200110474 | BUD12/12CAN | Core | 1 | Side 90 | |
| 071990300784 | COORSLIGHT18/12BTL | Core | 2 | Side | |
| 071990316006 | COORSLIGHT24/12CAN | | 1 | Side 90 | |
| 018200200786 | NATTYDADDY15/12CAN | | 1 | Side 90 | |

| Name: 2_3 | | W:96.00 in | D:14.00 in | | |
|----------------|-----------------------------|------------|------------|-------------|--|
| UPC (12 Digit) | Name | Ast | HFaci... | Orientat... | |
| 613008752200 | ARNOLDPALMERSPIKEDHALF... | New | 1 | Front 90 | |
| 018200202100 | BUDLIGHTPEELSVARIETY12/1... | PRO... | 1 | Front 90 | |
| 018200089817 | BUD8/16CAN | | 1 | Side 90 | |

Rite Aid
Store# 4782
BROOKLYN , NY

FINAL

Cold;Warm

FMB always lead flow in relation to store traffic flow.
 Open a support ticket if planogram flow shown is reversed from actual store traffic flow

Segment 3 of 3 starting view

Shelf Schematic Report

| RITE AID_4782 Store # 4782 | | # of segments: 3 | | |
|----------------------------|---------------------|------------------|---|----------|
| 071990000486 | COORSLIGHT12/12CAN | New | 1 | Front 90 |
| 034100573409 | LITE18/12CAN | Core | 1 | Side 90 |
| 034100016364 | HIGHLIFE12/12CAN | | 1 | Side 90 |
| 071439344508 | ROLLINGROCK12/12CAN | | 1 | Side 90 |

