

Rite Aid  
Store# 4738  
BROOKLYN , NY

Cold

FMB always lead flow in relation to store traffic flow.  
Open a support ticket if planogram flow shown is reversed from actual store traffic flow



**Rite Aid**  
**Store# 4738**  
**BROOKLYN , NY**

FINAL

Cold

FMB always lead flow in relation to store traffic flow.  
 Open a support ticket if planogram flow shown is reversed from actual store traffic flow

Segment 1 of 3 starting view

## Shelf Schematic Report

RITE AID\_4738 Store # 4738 # of segments: 3



Name: 1_1		W:23.00 in	D:24.00 in		
UPC (12 Digit)	Name	Ast	HFaci...	Orientat...	
071990300784	COORSLIGHT18/12BTL	Core	1	Side	
071990300173	COORSLIGHT18/12CAN	Core	1	Side	
080660954080	CORONA24/7BTL	Core	1	Side	

Name: 1_2		W:23.00 in	D:24.00 in		
UPC (12 Digit)	Name	Ast	HFaci...	Orientat...	
071990000486	COORSLIGHT12/12CAN	New	1	Side	
034100573409	LITE18/12CAN	Core	1	Side	
018200530470	BUDLIGHT12/12CAN	Core	1	Side	
018200110474	BUD12/12CAN	Core	1	Side	

Name: 1_3		W:23.00 in	D:24.00 in		
UPC (12 Digit)	Name	Ast	HFaci...	Orientat...	
034100015091	HIGHLIFE12/12BTL	Core	1	Side	
071990300692	COORSLIGHT12/12BTL	Core	1	Side	
018200112188	BUD18/12CAN	Core	1	Side 90	

Name: 1_4		W:23.00 in	D:24.00 in		
UPC (12 Digit)	Name	Ast	HFaci...	Orientat...	
018200200779	NATURALLIGHT15/12CAN	Core	1	Side	
071990480455	KEYSTONELIGHT15/12CAN		1	Side	
034100576363	LITE12/12CAN		1	Side	
719057001563	PRESIDENTE12/12BTL		1	Side	

Name: 2_1		W:23.00 in	D:24.00 in		
UPC (12 Digit)	Name	Ast	HFaci...	Orientat...	
080660956152	CORONA12/12BTL	Core	1	Front	
080660956800	CORONA18/12BTL	Core	1	Side	
080660957159	MODELOESPECIAL12/12CAN	Core	1	Side	

Name: 2_2		W:23.00 in	D:24.00 in		
UPC (12 Digit)	Name	Ast	HFaci...	Orientat...	
033544950425	CORONAPREMIER12/12BTL	Core	1	Front	
080660957579	MODELOESPECIAL12/12BTL	Core	1	Front	

Name: 2_3		W:23.00 in	D:24.00 in		
UPC (12 Digit)	Name	Ast	HFaci...	Orientat...	
080660956053	CORONA6/12BTL	Core	1	Side	

**Rite Aid**  
**Store# 4738**  
**BROOKLYN , NY**

FINAL

Cold

FMB always lead flow in relation to store traffic flow.  
 Open a support ticket if planogram flow shown is reversed from actual store traffic flow

Segment 1 of 3 starting view

## Shelf Schematic Report

RITE AID_4738	Store # 4738	# of segments: 3		
083820123937	GUINNESSEXTRASTOUT6/12B...	Core	1	Side
071990095116	BLUEMOONBELGIANWHITE6/1...		1	Side
071990095925	BLUEMOONLIGHTSKY12/12CAN	PRO...	1	Top 90



**Rite Aid**  
**Store# 4738**  
**BROOKLYN , NY**

FINAL

Cold

FMB always lead flow in relation to store traffic flow.  
 Open a support ticket if planogram flow shown is reversed from actual store traffic flow

Segment 3 of 3 starting view

## Shelf Schematic Report

RITE AID\_4738 Store # 4738 # of segments: 3

Name: 3_1		W:23.00 in	D:24.00 in		
UPC (12 Digit)	Name	Ast	HFaci...	Orientat...	
082488123006	BECKS12/12BTL	Core	1	Side	
072890001528	HEINEKEN18/12BTL	New	1	Side	
072890000163	HEINEKEN12/12BTL	Core	1	Side	

Name: 3_2		W:23.00 in	D:24.00 in		
UPC (12 Digit)	Name	Ast	HFaci...	Orientat...	
786150000144	STELLAARTOIS12/11.2BTL	Core	1	Side	
181954000022	PERONI6/11.2BTL		1	Side	
072890000118	HEINEKEN6/12BTL	Core	1	Side	
072890000200	HEINEKEN12/12CAN	Core	1	Side	

Name: 3_3		W:23.00 in	D:24.00 in		
UPC (12 Digit)	Name	Ast	HFaci...	Orientat...	
033544000434	CORONASELTZERVARIETY12/...	PRO...	1	Front 90	
018200202087	BUDLIGHTSELTZERVARIETY1...	PRO...	1	Front 90	
635985800064	WHITECLAWVARIETY12/12CA...	PRO...	1	Front 90	
635985200253	WHITECLAWBLACKCHERRY6/...		1	Side	

Name: 3_4		W:23.00 in	D:24.00 in		
UPC (12 Digit)	Name	Ast	HFaci...	Orientat...	
033544000137	CORONAVARIETYREFRESCA1...		1	Front 90	
034100012328	VIZZYVARIETY12/12CAN(A)	PRO...	1	Front 90	
087692009917	TRULYLEMONADEVARIETY12/...	PRO...	1	Front 90	
087692004172	TRULYCOLIMALIME6/12CAN		1	Side	



1 ft 11 in

# Rite Aid Store# 4738 BROOKLYN , NY

Warm

FMB always lead flow in relation to store traffic flow.  
Open a support ticket if planogram flow shown is reversed from actual store traffic flow



**Rite Aid**  
**Store# 4738**  
**BROOKLYN , NY**

FINAL

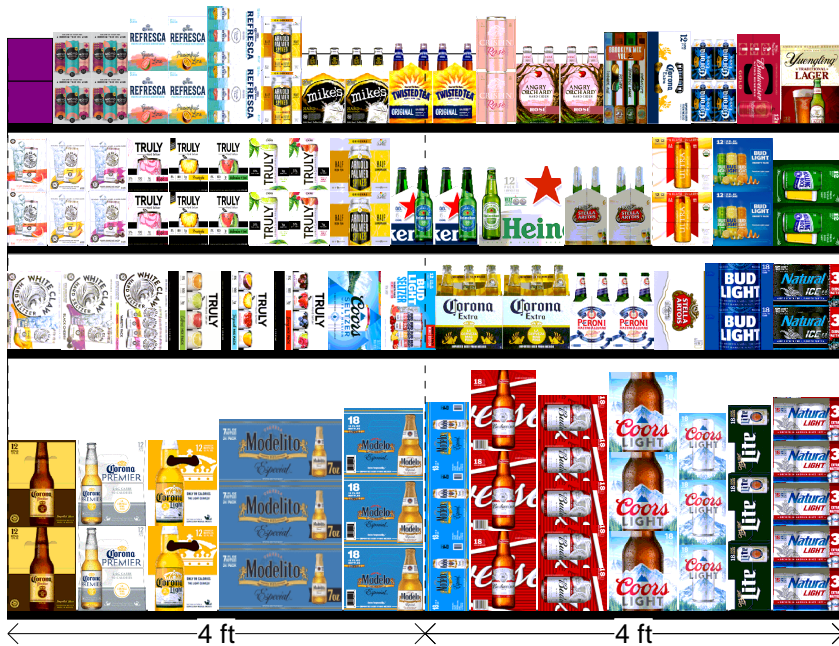
Warm

FMB always lead flow in relation to store traffic flow.  
 Open a support ticket if planogram flow shown is reversed from actual store traffic flow

Segment 1 of 2 starting view

## Shelf Schematic Report

RITE AID\_4738 Store # 4738 # of segments: 2



Name: 1_1		W:96.00 in	D:14.00 in		
UPC (12 Digit)	Name	Ast	HFaci...	Orientat...	
033544950531	CORONAFAMILIAR12/12BTL		1	Side	
033544950425	CORONAPREMIER12/12BTL	Core	1	Side	
080660956756	CORONALIGHT12/12BTL	Core	1	Side	
033544000212	MODELOESPECIAL24/7BTL	PRO...	1	Front	
033544950272	MODELOESPECIAL18/12BTL	Core	1	Side	
080660957111	MODELOESPECIAL18/12CAN	Core	1	Side	
018200113086	BUD18/12BTL		1	Side	
018200112188	BUD18/12CAN	Core	1	Side 90	
071990300784	COORSLIGHT18/12BTL	Core	1	Side	
071990300173	COORSLIGHT18/12CAN	Core	1	Side	
034100573409	LITE18/12CAN	Core	1	Side	
018200200779	NATURALLIGHT15/12CAN	Core	1	Side 90	

Name: 1_2		W:96.00 in	D:14.00 in		
UPC (12 Digit)	Name	Ast	HFaci...	Orientat...	
635985100331	WHITECLAWMANGO12/12CAN		1	Front 90	
635985260899	WHITECLAWBLACKCHERRY12...		1	Front 90	
635985548904	WHITECLAWVARIETY12/12CA...	Core	1	Front 90	
087692004240	TRULYVARIETYCITRUS12/12C...		1	Front 90	
087692008040	TRULYVARIETYTROPICAL12/1...		1	Front 90	
087692006862	TRULYVARIETYBERRY12/12C...	Core	1	Front 90	
071990000158	COORSHARDSELTZERVARIET...	New	1	Front 90	
018200202179	BUDLIGHTSELTZERVARIETYR...	New	1	Front 90	
080660956053	CORONA6/12BTL	Core	2	Front	
181954000022	PERONI6/11.2BTL		2	Side	
786150000168	STELLAARTOIS12/11.2CAN	Core	1	Front 90	
018200532184	BUDLIGHT18/12CAN	Core	1	Side 90	
018200284434	NATURALICE15/12CAN	Core	1	Side 90	

Name: 1_3		W:96.00 in	D:14.00 in		
UPC (12 Digit)	Name	Ast	HFaci...	Orientat...	
635985200284	WHITECLAWRUBYGRAPEFRUI...		1	Side	
635985260875	WHITECLAWMANGO6/12CAN		1	Side	
635985200253	WHITECLAWBLACKCHERRY6/...		1	Side	
087692007814	TRULYROSE6/12CAN		1	Side	
087692009658	TRULYPINEAPPLE6/12CAN	PRO...	1	Side	
087692009894	TRULYWATERMELONKIWI6/12...	PRO...	1	Side	
087692004172	TRULYCOLIMALIME6/12CAN		1	Side	

**Rite Aid**  
**Store# 4738**  
**BROOKLYN, NY**

FINAL

Warm

FMB always lead flow in relation to store traffic flow.  
 Open a support ticket if planogram flow shown is reversed from actual store traffic flow

Segment 1 of 2 starting view

## Shelf Schematic Report

RITE AID_4738	Store # 4738	# of segments: 2		
087692006787	TRULYWILDBERRY6/12CAN		1	Side
613008752200	ARNOLDPALMERSPIKEDHALF...	New	1	Side
072890006219	HEINEKEN0.0NEARBEER6/12B...		2	Side
072890001597	HEINEKENLIGHT12/12BTL	Core	1	Front
786150000014	STELLAARTOIS6/11.2BTL	Core	2	Side
018200201448	MICHELOBULTRAPUREGOLD1...	PRO...	1	Side
018200202100	BUDLIGHTPEELSVARIETY12/1...	PRO...	1	Side
071439344508	ROLLINGROCK12/12CAN		1	Side 90

Name: 1_4	W:96.00 in	D:14.00 in		
UPC (12 Digit)	Name	Ast	HFaci...	Orientat...
018200202506	BUDLIGHTPLATINUMSELTZER...	New	1	Side
034100012229	MOVVARIETY4/8.4CAN		2	Side
033544950678	CORONAREFRESGUAVALI...		1	Side
033544950630	CORONAREFRESCAPASSION...		1	Side
033544000137	CORONAVARIETYREFRESCA1...		1	Side 90
613008748333	ARNOLDPALMERSPIKEDHALF...		1	Side
635985100621	MIKESHARDLEMONADE6/11.2...		2	Side
087692831020	TWISTEDTEAORIGINAL6/12BTL		2	Side
894137002712	CRISPINROSE6/12CAN		1	Side
087692006602	ANGRYORCHARDROSE6/12BTL		2	Side
030613000746	BROOKLYNVARIETY12/12CAN	PRO...	1	Top 90
080660956954	CORONA12/12CAN	Core	1	Top 90
080660956855	CORONA6/12CAN		1	Side
018200202018	BUDWEISERNITROGOLD12/12...	PRO...	1	Top 90
089924278962	YUENGLINGLAGER12/12BTL		1	Side

