

Rite Aid
Store# 4185
NEW YORK , NY

FINAL

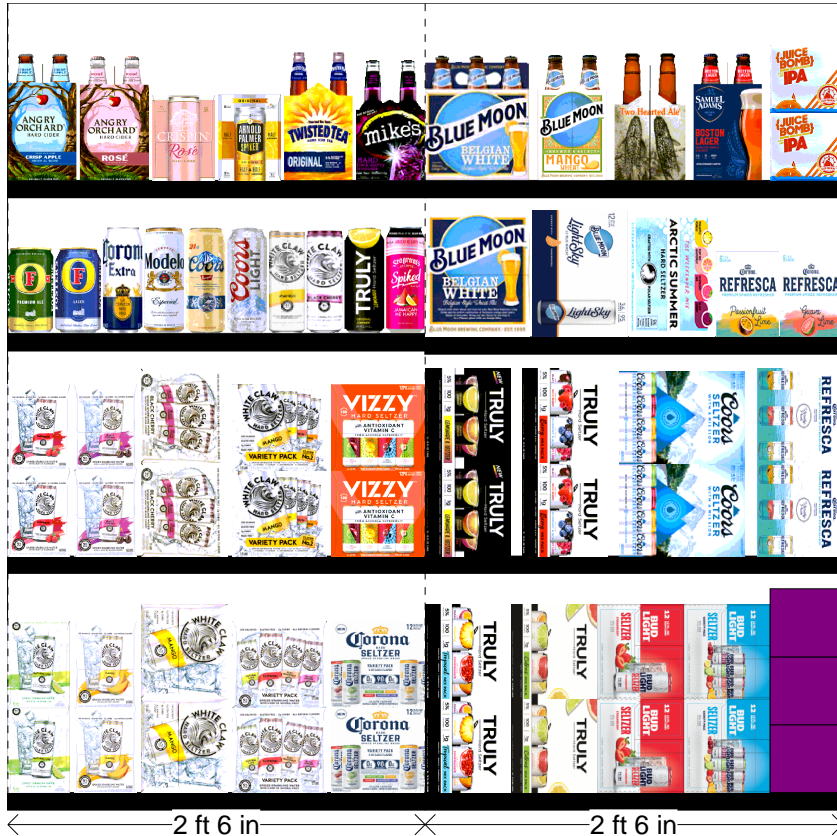
Cold

FMB always lead flow in relation to store traffic flow.
 Open a support ticket if planogram flow shown is reversed from actual store traffic flow

Segment 1 of 8 starting view

Shelf Schematic Report

RITE AID_4185 Store # 4185 # of segments: 8



Name: 1_1		W:30.00 in	D:20.00 in		
UPC (12 Digit)	Name	Ast	HFaci...	Orientat...	
635985025986	WHITECLAWNATURALLIME6/1...		1	Side	
635985260875	WHITECLAWMANGO6/12CAN		1	Side	
635985100331	WHITECLAWMANGO12/12CAN		1	Side 90	
635985548904	WHITECLAWVARIETYPACK12/...	Core	1	Side	
033544000434	CORONASELTZERVARIETY12/...	PRO...	1	Side	

Name: 1_2		W:30.00 in	D:20.00 in		
UPC (12 Digit)	Name	Ast	HFaci...	Orientat...	
635985260660	WHITECLAWRASPBERRY6/12...		1	Side	
635985200253	WHITECLAWBLACKCHERRY6/...		1	Side	
635985260899	WHITECLAWBLACKCHERRY12...		1	Side 90	
635985800064	WHITECLAWVARIETYPACK12/...	PRO...	1	Side	
034100012328	VIZZYVARIETY12/12CAN	PRO...	1	Side	

Name: 1_3		W:30.00 in	D:20.00 in		
UPC (12 Digit)	Name	Ast	HFaci...	Orientat...	
070897183315	FOSTERSPREMIUM1/25.4CAN		1	Front	
070897013315	FOSTERS1/25.4CAN		1	Front	
080660956435	CORONA1/24CAN		1	Front	
080660957210	MODELOESPECIAL1/24CAN		1	Front	
071990100711	COORSBANQUET1/24CAN		1	Front	
071990300654	COORSLIGHT1/24CAN		1	Front	
635985260394	WHITECLAWMANGO1/19.2CAN	PRO...	1	Front	
635985260387	WHITECLAWBLACKCHERRY1/...		1	Front	
087692010425	TRULYLEMONADE1/24CAN		1	Front	
070310014837	SEGRAMSESCAPESSPIKEDJ...		1	Front	

Name: 1_4		W:30.00 in	D:20.00 in		
UPC (12 Digit)	Name	Ast	HFaci...	Orientat...	
087692821021	ANGRYORCHARDCRISPAPPL...		1	Side	
087692006602	ANGRYORCHARDROSE6/12BTL		1	Side	
894137002712	CRISPINROSE6/12CAN		1	Side	
613008748333	ARNOLDPALMERSPIKEDHALF...		1	Side	
087692831020	TWISTEDTEAORIGINAL6/12BTL		1	Side	
635985067443	MIKESHARDBLACKCHERRYLE...		1	Side	

Name: 2_1		W:30.00 in	D:20.00 in		
UPC (12 Digit)	Name	Ast	HFaci...	Orientat...	

Rite Aid
Store# 4185
NEW YORK, NY

FINAL

Cold

FMB always lead flow in relation to store traffic flow.
 Open a support ticket if planogram flow shown is reversed from actual store traffic flow

Segment 1 of 8 starting view

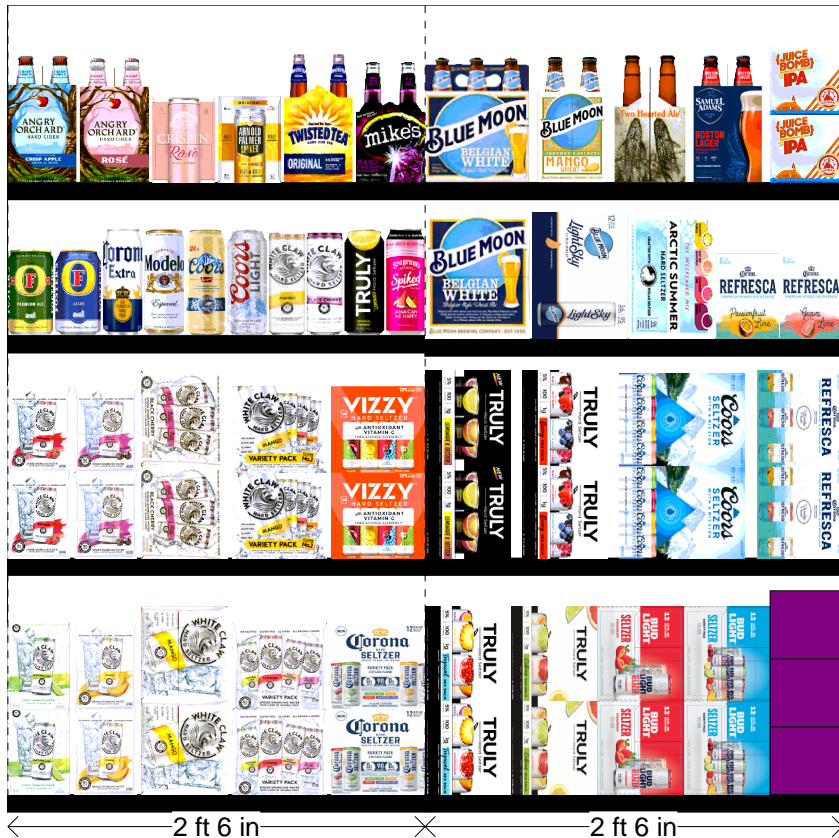
Shelf Schematic Report

RITE AID_4185	Store # 4185	# of segments: 8		
087692008040	TRULYVARIETYTROPICAL12/1...		1	Side 90
087692004240	TRULYVARIETYCITRUS12/12C...		1	Side 90
018200202179	BUDLIGHTSELTZERVARIETYR...	New	1	Side 90
018200202087	BUDLIGHTSELTZERVARIETY1...	PRO...	1	Side 90
018200202506	BUDLIGHTPLATINUMSELTZER...	New	1	Side

Name: 2_2		W:30.00 in	D:20.00 in		
UPC (12 Digit)	Name	Ast	HFaci...	Orientat...	
087692009917	TRULYLEMONADEVARIETY12/...	PRO...	1	Side 90	
087692006862	TRULYVARIETYBERRY12/12C...	Core	1	Side 90	
071990000158	COORSHARDSELTZERVARIET...	New	1	Top	
033544000137	CORONAREFRESCAVARIETY1...		1	Side 90	

Name: 2_3		W:30.00 in	D:20.00 in		
UPC (12 Digit)	Name	Ast	HFaci...	Orientat...	
071990095161	BLUEMOONBELGIANWHITE12/...	Core	1	Side	
071990095925	BLUEMOONLIGHTSKY12/12CAN	PRO...	1	Top 90	
041827701121	ARCTICSUMMERSPIKEDVARI...	PRO...	1	Front 90	
033544950630	CORONAREFRESCAPASSION...		1	Side	
033544950678	CORONAREFRESCAQUAVALI...		1	Side	

Name: 2_4		W:30.00 in	D:20.00 in		
UPC (12 Digit)	Name	Ast	HFaci...	Orientat...	
071990095116	BLUEMOONBELGIANWHITE6/1...		1	Front	
071990095611	BLUEMOONMANGOWHEAT6/1...		1	Side	
740522100832	BELLSTWOHEARTEDALE6/12B...		1	Side	
087692100126	SAMUELADAMS BOSTON LAGE...		1	Side	
860367000729	SLOOPJUICEBOMBIPA6/12CAN	PRO...	1	Side	



Rite Aid
Store# 4185
NEW YORK, NY

FINAL

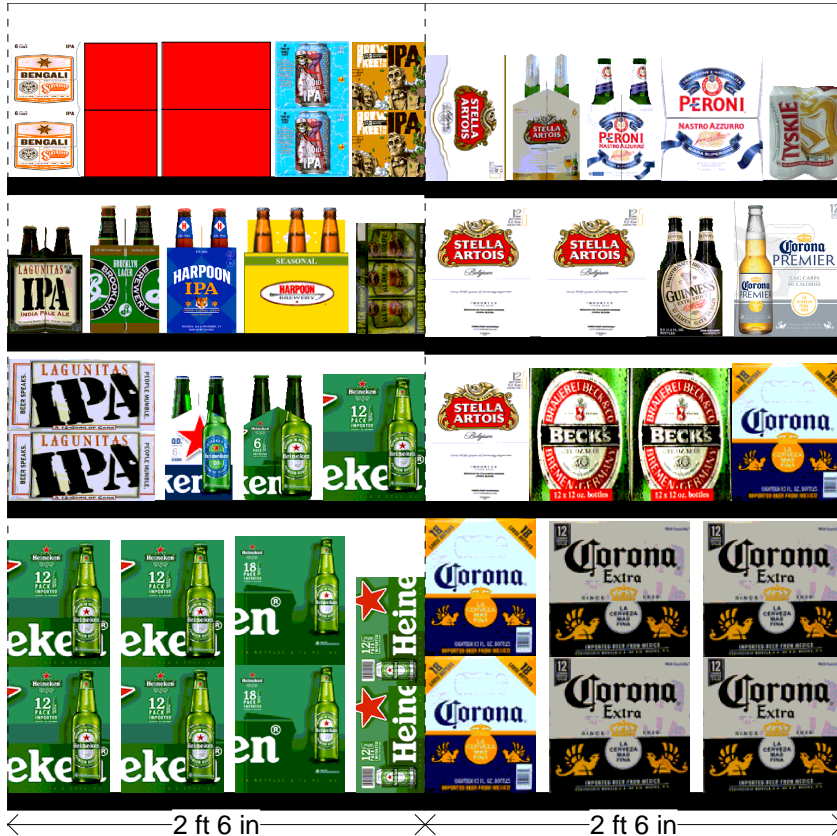
Cold

FMB always lead flow in relation to store traffic flow.
 Open a support ticket if planogram flow shown is reversed from actual store traffic flow

Segment 3 of 8 starting view

Shelf Schematic Report

RITE AID_4185 Store # 4185 # of segments: 8



Name: 3_1		W:30.00 in	D:20.00 in		
UPC (12 Digit)	Name	Ast	HFaci...	Orientat...	
07289000163	HEINEKEN12/12BTL	Core	2	Side	
072890001528	HEINEKEN18/12BTL	New	1	Side	
072890000200	HEINEKEN12/12CAN	Core	1	Side	

Name: 3_2		W:30.00 in	D:20.00 in		
UPC (12 Digit)	Name	Ast	HFaci...	Orientat...	
723830212121	LAGUNITASIPA12/12CAN		1	Top	
072890006219	HEINEKEN0.0NEARBEER6/12B...		1	Side	
072890000118	HEINEKEN6/12BTL	Core	1	Side	
072890000163	HEINEKEN12/12BTL	Core	1	Side	

Name: 3_3		W:30.00 in	D:20.00 in		
UPC (12 Digit)	Name	Ast	HFaci...	Orientat...	
723830000094	LAGUNITASIPA6/12BTL		1	Side	
030613000012	BROOKLYNLAGER6/12BTL		1	Side	
041827000767	HARPOONIPA6/12BTL		1	Side	
041827001467	HARPOONSEASONAL6/12BTL		1	Front	
642860900245	FOUNDERSALLDAYSESSIONI...		1	Side	

Name: 3_4		W:30.00 in	D:20.00 in		
UPC (12 Digit)	Name	Ast	HFaci...	Orientat...	
859093002435	SIXPOINTBENGALIIPA6/12CAN		1	Side	
862737000063	MONTAUKSUMMER6/12CAN(W...		1	Side	
869071000278	MONTAUKWAVECHASER4/6/1...		1	Front	
754527009946	NEWBELGIUMVOODOOROTAT...		1	Side	
859612001031	21STAMENDMENTBREWFREE...		1	Side	

Name: 4_1		W:30.00 in	D:20.00 in		
UPC (12 Digit)	Name	Ast	HFaci...	Orientat...	
080660956800	CORONA18/12BTL	Core	1	Side	
080660956152	CORONA12/12BTL	Core	2	Front	

Name: 4_2		W:30.00 in	D:20.00 in		
UPC (12 Digit)	Name	Ast	HFaci...	Orientat...	
786150000144	STELLAARTOIS12/11.2BTL	Core	1	Side	
082488123006	BECKS12/12BTL	Core	2	Side	
080660956800	CORONA18/12BTL	Core	1	Side	

Rite Aid
Store# 4185
NEW YORK, NY

FINAL

Cold

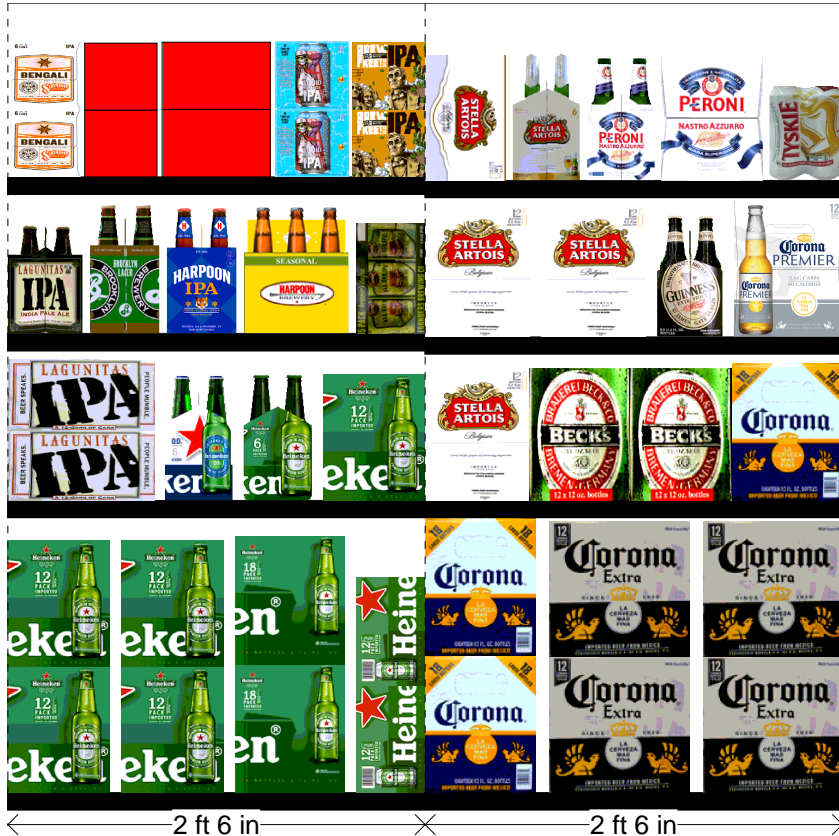
FMB always lead flow in relation to store traffic flow.
 Open a support ticket if planogram flow shown is reversed from actual store traffic flow

Segment 3 of 8 starting view

Shelf Schematic Report

RITE AID_4185	Store # 4185	# of segments: 8		
Name: 4_3	W:30.00 in	D:20.00 in		
UPC (12 Digit)	Name	Ast	HFaci...	Orientat...
786150000144	STELLAARTOIS12/11.2BTL	Core	2	Side
083820123937	GUINNESSEXTRASTOUT6/12B...	Core	1	Side
033544950425	CORONAPREMIER12/12BTL	Core	1	Side

Name: 4_4	W:30.00 in	D:20.00 in		
UPC (12 Digit)	Name	Ast	HFaci...	Orientat...
786150000168	STELLAARTOIS12/11.2CAN	Core	1	Front 90
786150000014	STELLAARTOIS6/11.2BTL	Core	1	Side
181954000022	PERONI6/11.2BTL		1	Side
181954000046	PERONI12/11.2BTL		1	Side
835609001116	TYSKIE4/16.9CAN		1	Front



Rite Aid
Store# 4185
NEW YORK , NY

FINAL

Cold

FMB always lead flow in relation to store traffic flow.
 Open a support ticket if planogram flow shown is reversed from actual store traffic flow

Segment 5 of 8 starting view

Shelf Schematic Report

RITE AID_4185 Store # 4185 # of segments: 8



Name: 5_1		W:30.00 in	D:20.00 in		
UPC (12 Digit)	Name	Ast	HFaci...	Orientat...	
080660956152	CORONA12/12BTL	Core	2	Front	
080660956152	CORONA12/12BTL	Core	1	Side	

Name: 5_2		W:30.00 in	D:20.00 in		
UPC (12 Digit)	Name	Ast	HFaci...	Orientat...	
080660956152	CORONA12/12BTL	Core	2	Front	
080660956152	CORONA12/12BTL	Core	1	Side	

Name: 5_3		W:30.00 in	D:20.00 in		
UPC (12 Digit)	Name	Ast	HFaci...	Orientat...	
080660956152	CORONA12/12BTL	Core	2	Front	
080660956152	CORONA12/12BTL	Core	1	Side	

Name: 6_1		W:30.00 in	D:20.00 in		
UPC (12 Digit)	Name	Ast	HFaci...	Orientat...	
080660957159	MODELOESPECIAL12/12CAN	Core	1	Top	
080660957159	MODELOESPECIAL12/12CAN	Core	1	Side 90	
080660957579	MODELOESPECIAL12/12BTL	Core	1	Side	

Name: 6_2		W:30.00 in	D:20.00 in		
UPC (12 Digit)	Name	Ast	HFaci...	Orientat...	
080660954080	CORONA24/7BTL	Core	1	Front	
080660954080	CORONA24/7BTL	Core	1	Side	
080660956251	CORONALIGHT6/12BTL		1	Side	

Name: 6_3		W:30.00 in	D:20.00 in		
UPC (12 Digit)	Name	Ast	HFaci...	Orientat...	
080660956152	CORONA12/12BTL	Core	1	Front	
080660956152	CORONA12/12BTL	Core	1	Side	
080660956954	CORONA12/12CAN	Core	1	Top 90	
080660956053	CORONA6/12BTL	Core	1	Side	

Rite Aid
Store# 4185
NEW YORK, NY

FINAL

Cold

FMB always lead flow in relation to store traffic flow.
 Open a support ticket if planogram flow shown is reversed from actual store traffic flow

Segment 7 of 8 starting view

Shelf Schematic Report

RITE AID_4185 Store # 4185 # of segments: 8

Name: 7_1		W:30.00 in	D:20.00 in		
UPC (12 Digit)	Name	Ast	HFaci...	Orientat...	
080660957111	MODELOESPECIAL18/12CAN	Core	1	Side	
071990300784	COORSLIGHT18/12BTL	Core	2	Side	
071990300173	COORSLIGHT18/12CAN	Core	1	Side 90	

Name: 7_2		W:30.00 in	D:20.00 in		
UPC (12 Digit)	Name	Ast	HFaci...	Orientat...	
033544950272	MODELOESPECIAL18/12BTL	Core	1	Front	
018200967214	MICHELOBULTRA18/12CAN		1	Side	
018200530470	BUDLIGHT12/12CAN	Core	1	Top 90	

Name: 7_3		W:30.00 in	D:20.00 in		
UPC (12 Digit)	Name	Ast	HFaci...	Orientat...	
080660956756	CORONALIGHT12/12BTL	Core	1	Side	
033544000212	MODELOESPECIAL24/7BTL	PRO...	1	Front	
018200201448	MICHELOBULTRAPUREGOLD1...	PRO...	1	Top 90	

Name: 7_4		W:30.00 in	D:20.00 in		
UPC (12 Digit)	Name	Ast	HFaci...	Orientat...	
080660957555	MODELOESPECIAL6/12CAN		1	Side	
080660957654	MODELOESPECIAL6/12BTL		1	Front	
719057001310	PRESIDENTE6/12BTL		1	Side	
719057001563	PRESIDENTE12/12BTL		1	Front	

Name: 8_1		W:30.00 in	D:20.00 in		
UPC (12 Digit)	Name	Ast	HFaci...	Orientat...	
034100573409	LITE18/12CAN	Core	1	Top 90	
034100015091	HIGHLIFE12/12BTL	Core	1	Side	
018200200779	NATURALLIGHT15/12CAN	Core	1	Side 90	
022100001701	PABST12/12CAN		1	Side 90	

Name: 8_2		W:30.00 in	D:20.00 in		
UPC (12 Digit)	Name	Ast	HFaci...	Orientat...	
018200532184	BUDLIGHT18/12CAN	Core	1	Side 90	
018200110474	BUD12/12CAN	Core	1	Top 90	
071990000486	COORSLIGHT12/12CAN	New	1	Top 90	
034100576363	LITE12/12CAN		1	Top 90	
018200284434	NATURALLICE15/12CAN	Core	1	Side	



Rite Aid
Store# 4185
NEW YORK, NY

FINAL

Cold

FMB always lead flow in relation to store traffic flow.
 Open a support ticket if planogram flow shown is reversed from actual store traffic flow

Segment 7 of 8 starting view

Shelf Schematic Report

RITE AID_4185	Store # 4185	# of segments: 8		
Name: 8_3	W:30.00 in	D:20.00 in		
UPC (12 Digit)	Name	Ast	HFaci...	Orientat...
018200112188	BUD18/12CAN	Core	1	Side 90
034100575090	LITE12/12BTL		1	Side
071990300692	COORSLIGHT12/12BTL	Core	1	Side
071439344508	ROLLINGROCK12/12CAN		1	Top 90

Name: 8_4	W:30.00 in	D:20.00 in		
UPC (12 Digit)	Name	Ast	HFaci...	Orientat...
613008752200	ARNOLDPALMERSPIKEDHALF...	New	1	Front 90
089924278962	YUENGLINGLAGER12/12BTL		1	Side
034100015053	HIGHLIFE6/12BTL		1	Front
034100016364	HIGHLIFE12/12CAN		1	Side 90



Rite Aid
Store# 4185
NEW YORK, NY

Warm

FMB always lead flow in relation to store traffic flow.
Open a support ticket if planogram flow shown is reversed from actual store traffic flow



Rite Aid
Store# 4185
NEW YORK , NY

FINAL

Warm

FMB always lead flow in relation to store traffic flow.
 Open a support ticket if planogram flow shown is reversed from actual store traffic flow

Segment 1 of 1 starting view

Shelf Schematic Report



RITE AID_4185	Store # 4185	# of segments: 1		
613008748333	ARNOLDPALMERSPIKEDHALF...		1	Side
071990095925	BLUEMOONLIGHTSKY12/12CAN PRO...		1	Top 90
672438002002	BALLASTPOINTFATHOMIPA6/1...		1	Side
859612001581	21STAMENDMENTSPARKLING...		1	Side
869071000278	MONTAUKWAVECHASER4/6/1...		1	Side
786150000014	STELLAARTOIS6/11.2BTL	Core	1	Side
080660956053	CORONA6/12BTL	Core	1	Side
033544950418	CORONAPREMIER6/12BTL		1	Side
034100015053	HIGHLIFE6/12BTL		1	Side