

**Rite Aid**  
**Store# 4856**  
**SOUTH RICHMOND HILL , NY**

Cold

FMB always lead flow in relation to store traffic flow.  
 Open a support ticket if planogram flow shown is reversed from actual store traffic flow



**Rite Aid**  
**Store# 4856**  
**SOUTH RICHMOND HILL , NY**

FINAL

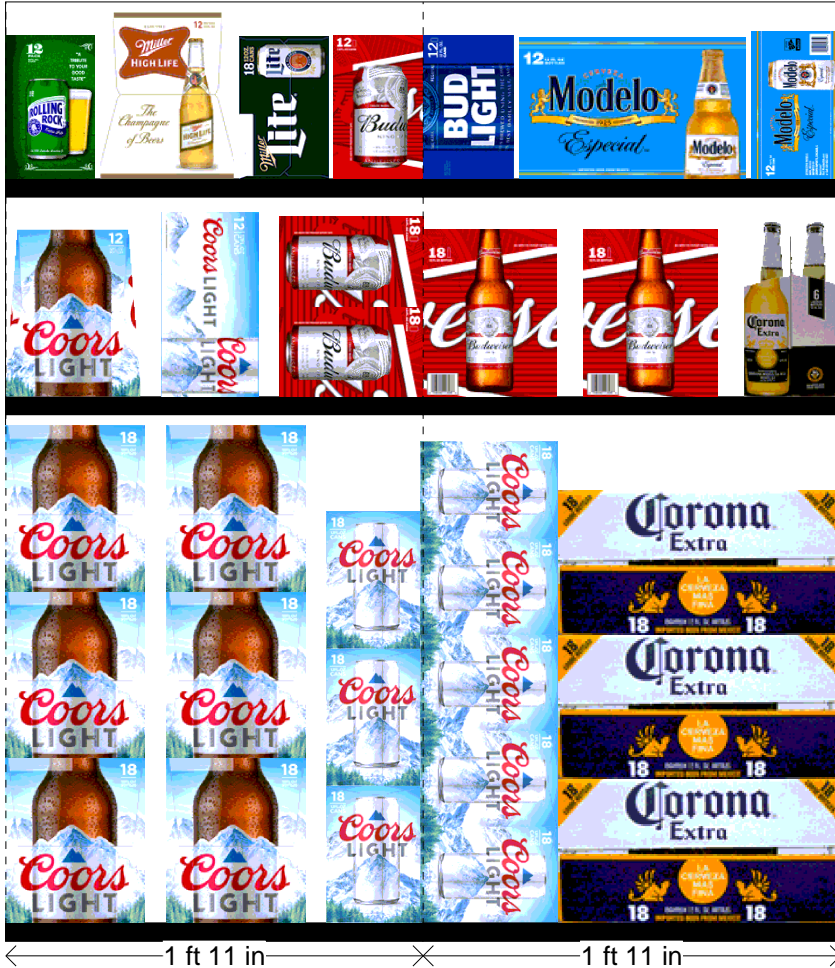
Cold

FMB always lead flow in relation to store traffic flow.  
 Open a support ticket if planogram flow shown is reversed from actual store traffic flow

Segment 1 of 5 starting view

## Shelf Schematic Report

RITE AID\_4856 Store # 4856 # of segments: 5



Name: 1_1		W:23.00 in	D:22.00 in		
UPC (12 Digit)	Name	Ast	HFaci...	Orientat...	
071990300784	COORSLIGHT18/12BTL	Core	2	Side	
071990300173	COORSLIGHT18/12CAN	Core	1	Side	

Name: 1_2		W:23.00 in	D:22.00 in		
UPC (12 Digit)	Name	Ast	HFaci...	Orientat...	
071990300692	COORSLIGHT12/12BTL	Core	1	Side	
071990000486	COORSLIGHT12/12CAN	New	1	Top 90	
018200112188	BUD18/12CAN	Core	1	Side 90	

Name: 1_3		W:23.00 in	D:22.00 in		
UPC (12 Digit)	Name	Ast	HFaci...	Orientat...	
071439344508	ROLLINGROCK12/12CAN		1	Side	
034100015091	HIGHLIFE12/12BTL	Core	1	Side	
034100573409	LITE18/12CAN	Core	1	Side	
018200110474	BUD12/12CAN	Core	1	Side	

Name: 2_1		W:23.00 in	D:22.00 in		
UPC (12 Digit)	Name	Ast	HFaci...	Orientat...	
071990300173	COORSLIGHT18/12CAN	Core	1	Side 90	
080660956800	CORONA18/12BTL	Core	1	Top	

Name: 2_2		W:23.00 in	D:22.00 in		
UPC (12 Digit)	Name	Ast	HFaci...	Orientat...	
018200113086	BUD18/12BTL		2	Side	
080660956053	CORONA6/12BTL	Core	1	Side	

Name: 2_3		W:23.00 in	D:22.00 in		
UPC (12 Digit)	Name	Ast	HFaci...	Orientat...	
018200530470	BUDLIGHT12/12CAN	Core	1	Side	
080660957579	MODELOESPECIAL12/12BTL	Core	1	Front	
080660957159	MODELOESPECIAL12/12CAN	Core	1	Side	

**Rite Aid**  
**Store# 4856**  
**SOUTH RICHMOND HILL , NY**

FINAL

Cold

FMB always lead flow in relation to store traffic flow.  
 Open a support ticket if planogram flow shown is reversed from actual store traffic flow

Segment 3 of 5 starting view

## Shelf Schematic Report

RITE AID\_4856 Store # 4856 # of segments: 5



Name: 3_1	W:23.00 in	D:22.00 in			
UPC (12 Digit)	Name	Ast	HFaci...	Orientat...	
080660956954	CORONA12/12CAN	Core	1	Side	
080660956152	CORONA12/12BTL	Core	2	Side	

Name: 3_2	W:23.00 in	D:22.00 in			
UPC (12 Digit)	Name	Ast	HFaci...	Orientat...	
033544950425	CORONAPREMIER12/12BTL	Core	1	Side	
080660956756	CORONALIGHT12/12BTL	Core	1	Side	
033544000137	CORONAREFRESCAVARIETY1...		1	Front 90	

Name: 4_1	W:23.00 in	D:22.00 in			
UPC (12 Digit)	Name	Ast	HFaci...	Orientat...	
080660956152	CORONA12/12BTL	Core	1	Side	
072890000163	HEINEKEN12/12BTL	Core	2	Side	

Name: 4_2	W:23.00 in	D:22.00 in			
UPC (12 Digit)	Name	Ast	HFaci...	Orientat...	
083820123937	GUINNESSEXTRASTOUT6/12B...	Core	1	Side	
071990095161	BLUEMOONBELGIANWHITE12/...	Core	1	Side	
072890001597	HEINEKENLIGHT12/12BTL	Core	1	Front	

**Rite Aid**  
**Store# 4856**  
**SOUTH RICHMOND HILL , NY**

FINAL

Cold

FMB always lead flow in relation to store traffic flow.  
 Open a support ticket if planogram flow shown is reversed from actual store traffic flow

Segment 5 of 5 starting view

## Shelf Schematic Report

RITE AID\_4856 Store # 4856 # of segments: 5

Name: 5_1	W:23.00 in	D:22.00 in			
UPC (12 Digit)	Name	Ast	HFaci...	Orientat...	
072890001528	HEINEKEN18/12BTL	New	1	Top	
635985548904	WHITECLAWVARIETYPACK12/...	Core	1	Side	

Name: 5_2	W:23.00 in	D:22.00 in			
UPC (12 Digit)	Name	Ast	HFaci...	Orientat...	
082488123006	BECKS12/12BTL	Core	2	Side	
635985800064	WHITECLAWVARIETYPACK12/...	PRO...	1	Top 90	

Name: 5_3	W:23.00 in	D:22.00 in			
UPC (12 Digit)	Name	Ast	HFaci...	Orientat...	
082488123006	BECKS12/12BTL	Core	1	Front	
018200202087	BUDLIGHTSELTZERVARIETY1...	PRO...	1	Front 90	
087692006862	TRULYVARIETYBERRY12/12C...	Core	1	Front 90	

Name: 5_4	W:23.00 in	D:22.00 in			
UPC (12 Digit)	Name	Ast	HFaci...	Orientat...	
786150000144	STELLAARTOIS12/11.2BTL	Core	1	Front	
033544000434	CORONASELTZERVARIETY12/...	PRO...	1	Front 90	
034100012328	VIZZYVARIETY12/12CAN	PRO...	1	Front 90	

