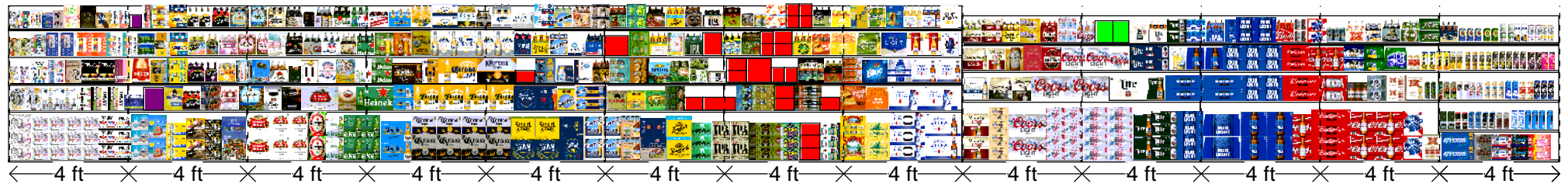


Small Shoprite Wakefern Food Corporate



# SHOPRITE\_244

Cooler Size: WAKEFERN FOOD CORP/HQ

## Store # 244

Address: 1643 ROUTE 82

LAGRANGEVILLE , NY



|              |             |                 |          |         |                   |
|--------------|-------------|-----------------|----------|---------|-------------------|
| SHOPRITE_244 | Store # 244 | H: 5 ft 3.00 in | W: 52 ft | D: 2 ft | # of segments: 13 |
|--------------|-------------|-----------------|----------|---------|-------------------|

| Name: 5_1 - 1 |             | W:384.00 in                     | D:30.00 in    | Avail Space: 0.52 in |             | Ht Space: 19.00 in |  |
|---------------|-------------|---------------------------------|---------------|----------------------|-------------|--------------------|--|
| ID            | UPC         | Name                            | Category      | HFacings             | Orientation | Units              |  |
| 83125         | 63598526089 | WHITE CLAW BLACK CHERRY 1...    | ABOVE PREMIUM | 1                    | Front       | 12                 |  |
| 45151         | 63598554890 | WHITE CLAW VARIETY PACK 12...   | ABOVE PREMIUM | 4                    | Side        | 36                 |  |
| 65035         | 8769200686  | TRULY VARIETY BERRY 12/ 12 C... | ABOVE PREMIUM | 1                    | Side        | 9                  |  |
| 87955         | 8769200804  | TRULY VARIETY TROPICAL 12/ 1... | ABOVE PREMIUM | 1                    | Side        | 9                  |  |
| 105977        | 1820020208  | BUD LIGHT SELTZER VARIETY ...   | ABOVE PREMIUM | 1                    | Side        | 9                  |  |
| 15329         | 8043280290  | SEAGRAMS ESCAPES VARIETY ...    | ABOVE PREMIUM | 1                    | Side        | 6                  |  |
| 22096         | 8769283134  | TWISTED TEA ORIGINAL 12/ 12 ... | ABOVE PREMIUM | 1                    | Side 90     | 9                  |  |
| 6433          | 63598512998 | MIKES HARD VARIETY PACK 12/ ... | ABOVE PREMIUM | 1                    | Side        | 6                  |  |
| 65025         | 63598526042 | MIKES HARDER VARIETY PACK ...   | ABOVE PREMIUM | 1                    | Side 90     | 9                  |  |
| 21815         | 8769200017  | ANGRY ORCHARD EXPLORER P...     | ABOVE PREMIUM | 1                    | Front       | 7                  |  |

| Name: 5_2 - 1 |             | W:384.00 in                       | D:24.00 in    | Avail Space: 2.41 in |             | Ht Space: 10.00 in |  |
|---------------|-------------|-----------------------------------|---------------|----------------------|-------------|--------------------|--|
| ID            | UPC         | Name                              | Category      | HFacings             | Orientation | Units              |  |
| 106595        | 63598580006 | WHITE CLAW VARIETY PACK 12...     | ABOVE PREMIUM | 1                    | Top 90      | 3                  |  |
| 93496         | 63598510033 | WHITE CLAW MANGO 12/ 12 CAN       | ABOVE PREMIUM | 1                    | Top 90      | 3                  |  |
| 104728        | 3354400043  | CORONA SELTZER VARIETY 12/ ...    | ABOVE PREMIUM | 2                    | Top 90      | 6                  |  |
| 68882         | 8769200678  | TRULY WILD BERRY 6/12 CAN         | ABOVE PREMIUM | 1                    | Side 90     | 6                  |  |
| 43031         | 8769200424  | TRULY VARIETY CITRUS 12/ 12 ...   | ABOVE PREMIUM | 2                    | Top 90      | 6                  |  |
| 15832         | 81582901006 | CAYMAN JACK MARGARITA 6/ 11...    | ABOVE PREMIUM | 1                    | Front       | 4                  |  |
| 107115        | 7031001647  | SEAGRAMS ESCAPE ITALIAN IC...     | ABOVE PREMIUM | 1                    | Side        | 2                  |  |
| 22093         | 8769283103  | TWISTED TEA ORIGINAL 12/ 12 ...   | ABOVE PREMIUM | 1                    | Side        | 2                  |  |
| 6444          | 63598522413 | MIKES HARD STRAWBERRY LE...       | ABOVE PREMIUM | 1                    | Front       | 4                  |  |
| 6515          | 63598526001 | MIKES HARD VARIETY PACK 12/ ...   | ABOVE PREMIUM | 1                    | Side 90     | 4                  |  |
| 16265         | 8200072385  | SMIRNOFF ICE ORIGINAL 6/ 11.2 ... | ABOVE PREMIUM | 1                    | Front       | 4                  |  |

| Name: 5_3 - 1 |             | W:384.00 in                   | D:24.00 in    | Avail Space: 0.83 in |             | Ht Space: 10.00 in |  |
|---------------|-------------|-------------------------------|---------------|----------------------|-------------|--------------------|--|
| ID            | UPC         | Name                          | Category      | HFacings             | Orientation | Units              |  |
| 83884         | 63598526087 | WHITE CLAW MANGO 6/ 12 CAN    | ABOVE PREMIUM | 1                    | Top 90      | 3                  |  |
| 6441          | 63598520025 | WHITE CLAW BLACK CHERRY 6...  | ABOVE PREMIUM | 1                    | Top 90      | 3                  |  |
| 63326         | 3410051660  | HENRYS HARD SPARKLING VA...   | ABOVE PREMIUM | 1                    | Top 90      | 3                  |  |
| 106991        | 8200079257  | SMIRNOFF SPIKED SPARKLING ... | ABOVE PREMIUM | 1                    | Top 90      | 3                  |  |
| 45535         | 8200078142  | SMIRNOFF SPIKED SPARKLING ... | ABOVE PREMIUM | 1                    | Top 90      | 3                  |  |
| 104272        | 8769200991  | TRULY LEMONADE VARIETY 12...  | ABOVE PREMIUM | 2                    | Top 90      | 6                  |  |
| 97735         | 4182770112  | ARCTIC SUMMER SPIKED VARIE... | ABOVE PREMIUM | 1                    | Top 90      | 3                  |  |
| 3257          | 3410008722  | REDD'S 12/ 12 BTL             | ABOVE PREMIUM | 1                    | Side        | 2                  |  |
| 107183        | 61300875550 | ARNOLD PALMER SPIKED LEMO...  | ABOVE PREMIUM | 1                    | Top 90      | 3                  |  |
| 22076         | 8769275134  | TWISTED TEA HALF AND HALF ... | ABOVE PREMIUM | 1                    | Side 90     | 4                  |  |
| 6402          | 63598506744 | MIKES HARD BLACK CHERRY L...  | ABOVE PREMIUM | 1                    | Front       | 4                  |  |
| 6402          | 63598506744 | MIKES HARD BLACK CHERRY L...  | ABOVE PREMIUM | 1                    | Side        | 3                  |  |
| 16384         | 8200075748  | SMIRNOFF ICE SCREWDRIVER ...  | ABOVE PREMIUM | 1                    | Front       | 4                  |  |
| 89797         | 8769200821  | ANGRY ORCHARD EXPLORER P...   | ABOVE PREMIUM | 1                    | Top 90      | 3                  |  |

| Name: 5_4 - 1 |             | W:384.00 in                      | D:24.00 in    | Avail Space: 1.50 in |             | Ht Space: 10.00 in |  |
|---------------|-------------|----------------------------------|---------------|----------------------|-------------|--------------------|--|
| ID            | UPC         | Name                             | Category      | HFacings             | Orientation | Units              |  |
| 6442          | 63598520028 | WHITE CLAW RUBY GRAPEFRU...      | ABOVE PREMIUM | 1                    | Top 90      | 3                  |  |
| 6380          | 63598502598 | WHITE CLAW NATURAL LIME 6/ ...   | ABOVE PREMIUM | 1                    | Top 90      | 3                  |  |
| 86788         | 3410051681  | CAPE LINE VARIETY PACK 12/ 12... | ABOVE PREMIUM | 1                    | Front 90    | 3                  |  |
| 19178         | 85389700227 | BON AND VIV SPIKED SELTZER ...   | ABOVE PREMIUM | 2                    | Front 90    | 6                  |  |
| 105038        | 3410001232  | VIZZY VARIETY 12/ 12 CAN         | ABOVE PREMIUM | 2                    | Front 90    | 6                  |  |
| 86777         | 3354400013  | CORONA REFRESCA VARIETY 1...     | ABOVE PREMIUM | 2                    | Front 90    | 6                  |  |
| 1440          | 1820019987  | BUD LIGHT LIME LIME-A-RITA 12... | ABOVE PREMIUM | 1                    | Side 90     | 4                  |  |
| 68928         | 61300875220 | ARNOLD PALMER SPIKED HALF ...    | ABOVE PREMIUM | 1                    | Front 90    | 3                  |  |

Cooler Size: WAKEFERN FOOD CORP/HQ

Address: 1643 ROUTE 82

LAGRANGEVILLE , NY

|       |             |                                 |               |   |       |   |
|-------|-------------|---------------------------------|---------------|---|-------|---|
| 22074 | 8769275102  | TWISTED TEA HALF AND HALF ...   | ABOVE PREMIUM | 1 | Front | 4 |
| 6398  | 63598506074 | MIKES HARD SEASONAL 6/ 11.2 ... | ABOVE PREMIUM | 1 | Front | 4 |
| 6398  | 63598506074 | MIKES HARD SEASONAL 6/ 11.2 ... | ABOVE PREMIUM | 1 | Side  | 3 |
| 16283 | 8200072754  | SMIRNOFF ICE RASPBERRY BU...    | ABOVE PREMIUM | 1 | Front | 4 |
| 65019 | 8769200660  | ANGRY ORCHARD ROSE 6/ 12 B...   | ABOVE PREMIUM | 1 | Front | 4 |

| Name: 5_5 - 1 |             | W:384.00 in                      | D:24.00 in    | Avail Space: 2.09 in |             | Ht Space: 9.00 in |
|---------------|-------------|----------------------------------|---------------|----------------------|-------------|-------------------|
| ID            | UPC         | Name                             | Category      | HFacings             | Orientation | Units             |
| 104752        | 63598500021 | WHITE CLAW 70 PINEAPPLE 6/ 1...  | ABOVE PREMIUM | 1                    | Top 90      | 3                 |
| 89569         | 3410051680  | CAPE LINE VARIETY PACK 6/ 12 ... | ABOVE PREMIUM | 1                    | Top 90      | 3                 |
| 79757         | 3410098959  | HENRYS HARD SPARKLING VA...      | ABOVE PREMIUM | 1                    | Top 90      | 3                 |
| 89831         | 1820028548  | BON AND VIV SPIKED SELTZER ...   | ABOVE PREMIUM | 1                    | Side        | 3                 |
| 19179         | 85389700228 | BON AND VIV SPIKED SELTZER ...   | ABOVE PREMIUM | 1                    | Top 90      | 3                 |
| 86818         | 1820020130  | RITAS SPRITZ VARIETY PACK 1...   | ABOVE PREMIUM | 1                    | Front 90    | 3                 |
| 89835         | 85231300483 | PRESS VARIETY 12/ 12 CAN         | ABOVE PREMIUM | 1                    | Top 90      | 3                 |
| 103099        | 2210005002  | PABST HARD COFFEE 4/ 11 CAN      | ABOVE PREMIUM | 1                    | Front       | 4                 |
| 69621         | 3354495063  | CORONA REFRESCA PASSIONF...      | ABOVE PREMIUM | 1                    | Top 90      | 3                 |
| 69622         | 3354495067  | CORONA REFRESCA GUAVA LIM...     | ABOVE PREMIUM | 1                    | Top 90      | 3                 |
| 107020        | 7031001632  | SEAGRAMS ESCAPE TROPICAL ...     | ABOVE PREMIUM | 1                    | Front       | 4                 |
| 1464          | 1820020993  | BUD LIGHT LIME STRAW-BER-R...    | ABOVE PREMIUM | 1                    | Top 90      | 3                 |
| 65020         | 61300874833 | ARNOLD PALMER SPIKED HALF ...    | ABOVE PREMIUM | 1                    | Side 90     | 6                 |
| 22092         | 8769283102  | TWISTED TEA ORIGINAL 6/ 12 B...  | ABOVE PREMIUM | 1                    | Front       | 4                 |
| 6413          | 63598510062 | MIKES HARD LEMONADE 6/ 11.2...   | ABOVE PREMIUM | 1                    | Side        | 3                 |
| 6413          | 63598510062 | MIKES HARD LEMONADE 6/ 11.2...   | ABOVE PREMIUM | 1                    | Side        | 3                 |
| 6535          | 63598560611 | MIKES HARD CRANBERRY PAS...      | ABOVE PREMIUM | 1                    | Front       | 4                 |
| 99509         | 8769200838  | ANGRY ORCHARD UNFILTERED...      | ABOVE PREMIUM | 1                    | Front       | 4                 |



# SHOPRITE\_244

Cooler Size: WAKEFERN FOOD CORP/HQ

Store # 244

Address: 1643 ROUTE 82

LAGRANGEVILLE , NY



|              |             |                 |          |         |                   |
|--------------|-------------|-----------------|----------|---------|-------------------|
| SHOPRITE_244 | Store # 244 | H: 5 ft 3.00 in | W: 52 ft | D: 2 ft | # of segments: 13 |
|--------------|-------------|-----------------|----------|---------|-------------------|

| Name: 5_1 - 1 |             | W:384.00 in                | D:30.00 in    | Avail Space: 0.52 in |             | Ht Space: 19.00 in |  |
|---------------|-------------|----------------------------|---------------|----------------------|-------------|--------------------|--|
| ID            | UPC         | Name                       | Category      | HFacings             | Orientation | Units              |  |
| 14094         | 78615000014 | STELLA ARTOIS 12/ 11.2 BTL | ABOVE PREMIUM | 1                    | Front       | 8                  |  |
| 14094         | 78615000014 | STELLA ARTOIS 12/ 11.2 BTL | ABOVE PREMIUM | 2                    | Side        | 12                 |  |
| 16691         | 8248812300  | BECKS 12/ 12 BTL           | ABOVE PREMIUM | 1                    | Side        | 6                  |  |
| 11342         | 7289000159  | HEINEKEN LIGHT 12/ 12 BTL  | ABOVE PREMIUM | 1                    | Side        | 6                  |  |
| 11300         | 7289000016  | HEINEKEN 12/ 12 BTL        | ABOVE PREMIUM | 1                    | Side        | 6                  |  |
| 11300         | 7289000016  | HEINEKEN 12/ 12 BTL        | ABOVE PREMIUM | 1                    | Side        | 6                  |  |
| 15436         | 8066095757  | MODELO ESPECIAL 12/ 12 BTL | ABOVE PREMIUM | 1                    | Front       | 6                  |  |
| 15403         | 8066095615  | CORONA 12/ 12 BTL          | ABOVE PREMIUM | 3                    | Front       | 21                 |  |

| Name: 5_2 - 1 |             | W:384.00 in                    | D:24.00 in    | Avail Space: 2.41 in |             | Ht Space: 10.00 in |  |
|---------------|-------------|--------------------------------|---------------|----------------------|-------------|--------------------|--|
| ID            | UPC         | Name                           | Category      | HFacings             | Orientation | Units              |  |
| 21823         | 8769200033  | ANGRY ORCHARD CRISP APPLE...   | ABOVE PREMIUM | 1                    | Front       | 3                  |  |
| 1514          | 1820023997  | STELLA ARTOIS CIDRE 12/ 12 BTL | ABOVE PREMIUM | 1                    | Side        | 2                  |  |
| 17286         | 8382010403  | GUINNESS DRAUGHT STOUT 1...    | ABOVE PREMIUM | 1                    | Side        | 2                  |  |
| 61628         | 78615000149 | STELLA ARTOIS 18/ 11.2 BTL     | ABOVE PREMIUM | 1                    | Front       | 3                  |  |
| 11384         | 7289010016  | AMSTEL LIGHT 12/ 12 BTL        | ABOVE PREMIUM | 1                    | Side        | 2                  |  |
| 11338         | 7289000152  | HEINEKEN 18/ 12 BTL            | ABOVE PREMIUM | 1                    | Front       | 3                  |  |
| 15429         | 8066095715  | MODELO ESPECIAL 12/ 12 CAN     | ABOVE PREMIUM | 1                    | Side 90     | 4                  |  |
| 15416         | 8066095675  | CORONA LIGHT 12/ 12 BTL        | ABOVE PREMIUM | 4                    | Front       | 12                 |  |

| Name: 5_3 - 1 |             | W:384.00 in                   | D:24.00 in    | Avail Space: 0.83 in |             | Ht Space: 10.00 in |  |
|---------------|-------------|-------------------------------|---------------|----------------------|-------------|--------------------|--|
| ID            | UPC         | Name                          | Category      | HFacings             | Orientation | Units              |  |
| 21843         | 8769200083  | ANGRY ORCHARD CRISP APPLE...  | ABOVE PREMIUM | 1                    | Top 90      | 3                  |  |
| 1517          | 1820024001  | STELLA ARTOIS CIDRE 6/ 12 BTL | ABOVE PREMIUM | 1                    | Front       | 4                  |  |
| 17299         | 8382012368  | GUINNESS DRAUGHT STOUT 8/ ... | ABOVE PREMIUM | 1                    | Side        | 2                  |  |
| 14096         | 78615000016 | STELLA ARTOIS 12/ 11.2 CAN    | ABOVE PREMIUM | 1                    | Top 90      | 4                  |  |
| 570           | 18195400004 | PERONI 12/ 11.2 BTL           | ABOVE PREMIUM | 1                    | Side        | 2                  |  |
| 16496         | 8205480751  | WARSTEINER OKTOBERFEST 1...   | ABOVE PREMIUM | 1                    | Side        | 2                  |  |
| 11348         | 7289000188  | HEINEKEN LIGHT 12/ 12 CAN     | ABOVE PREMIUM | 1                    | Side 90     | 2                  |  |
| 11301         | 7289000020  | HEINEKEN 12/ 12 CAN           | ABOVE PREMIUM | 1                    | Side 90     | 4                  |  |
| 15449         | 8066095787  | MODELO NEGRA 12/ 12 BTL       | ABOVE PREMIUM | 1                    | Front       | 2                  |  |
| 15406         | 8066095621  | CORONA LIGHT 12/ 12 CAN       | ABOVE PREMIUM | 1                    | Top 90      | 3                  |  |
| 15407         | 8066095623  | CORONA LIGHT 18/ 12 BTL       | ABOVE PREMIUM | 1                    | Front       | 3                  |  |

| Name: 5_4 - 1 |             | W:384.00 in                      | D:24.00 in    | Avail Space: 1.50 in |             | Ht Space: 10.00 in |  |
|---------------|-------------|----------------------------------|---------------|----------------------|-------------|--------------------|--|
| ID            | UPC         | Name                             | Category      | HFacings             | Orientation | Units              |  |
| 65019         | 8769200660  | ANGRY ORCHARD ROSE 6/ 12 B...    | ABOVE PREMIUM | 1                    | Side        | 3                  |  |
| 84117         | 89413700268 | CRISPIN VARIETY PACK 12/ 12 C... | ABOVE PREMIUM | 1                    | Top 90      | 3                  |  |
| 17284         | 8382010401  | GUINNESS DRAUGHT STOUT 6/ ...    | ABOVE PREMIUM | 1                    | Front       | 4                  |  |
| 14089         | 78615000001 | STELLA ARTOIS 6/ 11.2 BTL        | ABOVE PREMIUM | 1                    | Front       | 4                  |  |
| 568           | 18195400002 | PERONI 6/ 11.2 BTL               | ABOVE PREMIUM | 1                    | Front       | 4                  |  |
| 16463         | 8205410454  | WARSTEINER PREMIUM 6/ 11.2 ...   | ABOVE PREMIUM | 1                    | Front       | 5                  |  |
| 11298         | 7289000011  | HEINEKEN 6/ 12 BTL               | ABOVE PREMIUM | 1                    | Front       | 4                  |  |
| 10788         | 7231123012  | DOS EQUIS 12/ 12 BTL             | ABOVE PREMIUM | 1                    | Side        | 2                  |  |
| 10803         | 7231133140  | DOS EQUIS AMBER 12/ 12 BTL       | ABOVE PREMIUM | 1                    | Side        | 2                  |  |
| 15390         | 8066095315  | PACIFICO 12/ 12 BTL              | ABOVE PREMIUM | 1                    | Side        | 2                  |  |
| 44952         | 3354495042  | CORONA PREMIER 12/ 12 BTL        | ABOVE PREMIUM | 1                    | Side        | 2                  |  |
| 44952         | 3354495042  | CORONA PREMIER 12/ 12 BTL        | ABOVE PREMIUM | 1                    | Front       | 3                  |  |

| Name: 5_5 - 1 |            | W:384.00 in                  | D:24.00 in    | Avail Space: 2.09 in |             | Ht Space: 9.00 in |  |
|---------------|------------|------------------------------|---------------|----------------------|-------------|-------------------|--|
| ID            | UPC        | Name                         | Category      | HFacings             | Orientation | Units             |  |
| 22090         | 8769282102 | ANGRY ORCHARD CRISP APPLE... | ABOVE PREMIUM | 1                    | Front       | 4                 |  |



Cooler Size: WAKEFERN FOOD CORP/HQ

Address: 1643 ROUTE 82

LAGRANGEVILLE , NY

|       |            |                                  |               |   |       |   |
|-------|------------|----------------------------------|---------------|---|-------|---|
| 22457 | 8834510151 | STRONGBOW GOLD 6/ 11.2 BTL       | ABOVE PREMIUM | 1 | Front | 5 |
| 17305 | 8382012393 | GUINNESS EXTRA STOUT 6/ 12 ...   | ABOVE PREMIUM | 1 | Front | 5 |
| 17293 | 8382012360 | GUINNESS DRAUGHT STOUT 4/ ...    | ABOVE PREMIUM | 1 | Side  | 4 |
| 16497 | 8205480754 | WARSTEINER OKTOBERFEST 6...      | ABOVE PREMIUM | 1 | Front | 5 |
| 10808 | 7231163001 | PILSNER URQUELL 6/ 11.2 BTL      | ABOVE PREMIUM | 1 | Front | 5 |
| 89681 | 7289000621 | HEINEKEN 0.0 NEAR BEER 6/ 12 ... | ABOVE PREMIUM | 1 | Front | 4 |
| 17348 | 8382056793 | RED STRIPE LAGER 6/ 11.2 BTL     | ABOVE PREMIUM | 1 | Front | 4 |
| 15442 | 8066095765 | MODELO ESPECIAL 6/ 12 BTL        | ABOVE PREMIUM | 1 | Front | 3 |
| 15408 | 8066095625 | CORONA LIGHT 6/ 12 BTL           | ABOVE PREMIUM | 1 | Front | 4 |
| 15426 | 8066095695 | CORONA 12/ 12 CAN                | ABOVE PREMIUM | 1 | Top   | 6 |
| 15400 | 8066095605 | CORONA 6/ 12 BTL                 | ABOVE PREMIUM | 1 | Front | 4 |
| 15393 | 8066095401 | CORONA 6/ 7 BTL                  | ABOVE PREMIUM | 1 | Front | 5 |



# SHOPRITE\_244

Cooler Size: WAKEFERN FOOD CORP/HQ



## Store # 244

Address: 1643 ROUTE 82

LAGRANGEVILLE , NY

|              |             |                 |          |         |                   |
|--------------|-------------|-----------------|----------|---------|-------------------|
| SHOPRITE_244 | Store # 244 | H: 5 ft 3.00 in | W: 52 ft | D: 2 ft | # of segments: 13 |
|--------------|-------------|-----------------|----------|---------|-------------------|

| Name: 5_1 - 1 |             | W:384.00 in                     | D:30.00 in    | Avail Space: 0.52 in |             | Ht Space: 19.00 in |  |
|---------------|-------------|---------------------------------|---------------|----------------------|-------------|--------------------|--|
| ID            | UPC         | Name                            | Category      | HFacings             | Orientation | Units              |  |
| 15403         | 8066095615  | CORONA 12/ 12 BTL               | ABOVE PREMIUM | 1                    | Front       | 7                  |  |
| 21940         | 8769201103  | SAMUEL ADAMS SEASONAL 12/ ...   | ABOVE PREMIUM | 2                    | Front       | 14                 |  |
| 21988         | 8769229103  | SAMUEL ADAMS VARIETY PACK...    | ABOVE PREMIUM | 1                    | Front       | 7                  |  |
| 10183         | 7199009516  | BLUE MOON BELGIAN WHITE 12...   | ABOVE PREMIUM | 2                    | Side        | 12                 |  |
| 10202         | 7199009554  | BLUE MOON BREWMASTER VA...      | ABOVE PREMIUM | 1                    | Side        | 6                  |  |
| 13010         | 75452700024 | NEW BELGIUM FAT TIRE 12/ 12 ... | ABOVE PREMIUM | 1                    | Front       | 7                  |  |
| 3494          | 3410051607  | LEINIES SEASONAL PRIMARY 1...   | ABOVE PREMIUM | 1                    | Front       | 6                  |  |
| 58827         | 73692011651 | GOOSE ISLAND IPA 15/ 12 CAN     | ABOVE PREMIUM | 1                    | Side 90     | 6                  |  |

| Name: 5_2 - 1 |             | W:384.00 in                      | D:24.00 in    | Avail Space: 2.41 in |             | Ht Space: 10.00 in |  |
|---------------|-------------|----------------------------------|---------------|----------------------|-------------|--------------------|--|
| ID            | UPC         | Name                             | Category      | HFacings             | Orientation | Units              |  |
| 21957         | 8769210014  | SAMUEL ADAMS BOSTON LAGE...      | ABOVE PREMIUM | 1                    | Front       | 3                  |  |
| 21957         | 8769210014  | SAMUEL ADAMS BOSTON LAGE...      | ABOVE PREMIUM | 1                    | Side        | 2                  |  |
| 10192         | 7199009536  | BLUE MOON SEASONAL 12/ 12 B...   | ABOVE PREMIUM | 1                    | Side        | 2                  |  |
| 63851         | 7199017052  | BLUE MOON BELGIAN WHITE 15...    | ABOVE PREMIUM | 1                    | Top         | 6                  |  |
| 10872         | 72383010012 | LAGUNITAS LITTLE SUMPIN 12/ ...  | ABOVE PREMIUM | 1                    | Side        | 2                  |  |
| 17200         | 8378322812  | SIERRA NEVADA SEASONAL 12/ ...   | ABOVE PREMIUM | 1                    | Side        | 2                  |  |
| 17211         | 8378337512  | SIERRA NEVADA PALE ALE 12/ 1...  | ABOVE PREMIUM | 1                    | Side        | 2                  |  |
| 45591         | 63848900189 | DOGFISH HEAD 60 MINUTE IPA ...   | ABOVE PREMIUM | 1                    | Side 90     | 4                  |  |
| 88312         | 63848900196 | DOGFISH HEAD SEA QUENCH A...     | ABOVE PREMIUM | 1                    | Side 90     | 2                  |  |
| 107006        | 73692011926 | GOOSE ISLAND SO-LO IPA 15/ 12... | ABOVE PREMIUM | 1                    | Top         | 3                  |  |

| Name: 5_3 - 1 |             | W:384.00 in                     | D:24.00 in    | Avail Space: 0.83 in |             | Ht Space: 10.00 in |  |
|---------------|-------------|---------------------------------|---------------|----------------------|-------------|--------------------|--|
| ID            | UPC         | Name                            | Category      | HFacings             | Orientation | Units              |  |
| 15417         | 8066095680  | CORONA 18/ 12 BTL               | ABOVE PREMIUM | 1                    | Front       | 3                  |  |
| 85046         | 8769200788  | SAMUEL ADAMS NEW ENGLAN...      | ABOVE PREMIUM | 1                    | Side 90     | 2                  |  |
| 65030         | 8769200497  | SAMUEL ADAMS 76 12/ 12 CAN      | ABOVE PREMIUM | 1                    | Side 90     | 4                  |  |
| 45526         | 7199017044  | BLUE MOON BELGIAN WHITE 6/ ...  | ABOVE PREMIUM | 1                    | Front       | 4                  |  |
| 99754         | 7199009592  | BLUE MOON LIGHT SKY 12/ 12 C... | ABOVE PREMIUM | 1                    | Top 90      | 3                  |  |
| 13018         | 75452700066 | NEW BELGIUM VODOO RANG...       | ABOVE PREMIUM | 1                    | Front       | 4                  |  |
| 13068         | 75452700470 | NEW BELGIUM VARIETY PACK 1...   | ABOVE PREMIUM | 1                    | Side 90     | 4                  |  |
| 13047         | 75452700362 | NEW BELGIUM VODOO RANG...       | ABOVE PREMIUM | 1                    | Side 90     | 4                  |  |
| 17190         | 8378316000  | SIERRA NEVADA 4 WAY IPA VA...   | ABOVE PREMIUM | 1                    | Side        | 2                  |  |
| 6748          | 63848900029 | DOGFISH HEAD 60 MINUTE IPA ...  | ABOVE PREMIUM | 1                    | Front       | 4                  |  |
| 11969         | 73692011180 | GOOSE ISLAND IPA 12/ 12 BTL     | ABOVE PREMIUM | 1                    | Side        | 2                  |  |
| 99516         | 72383021212 | LAGUNITAS IPA 12/ 12 CAN        | ABOVE PREMIUM | 1                    | Side 90     | 2                  |  |

| Name: 5_4 - 1 |             | W:384.00 in                      | D:24.00 in    | Avail Space: 1.50 in |             | Ht Space: 10.00 in |  |
|---------------|-------------|----------------------------------|---------------|----------------------|-------------|--------------------|--|
| ID            | UPC         | Name                             | Category      | HFacings             | Orientation | Units              |  |
| 44952         | 3354495042  | CORONA PREMIER 12/ 12 BTL        | ABOVE PREMIUM | 2                    | Side        | 4                  |  |
| 21956         | 8769210012  | SAMUEL ADAMS BOSTON LAGE...      | ABOVE PREMIUM | 1                    | Front       | 4                  |  |
| 21995         | 8769230050  | SAMUEL ADAMS SEASONAL 6/ 1...    | ABOVE PREMIUM | 1                    | Front       | 4                  |  |
| 10180         | 7199009511  | BLUE MOON BELGIAN WHITE 6/ ...   | ABOVE PREMIUM | 1                    | Front       | 4                  |  |
| 99757         | 7199009591  | BLUE MOON LIGHT SKY 6/ 12 CAN    | ABOVE PREMIUM | 1                    | Front       | 5                  |  |
| 13009         | 75452700022 | NEW BELGIUM FAT TIRE 6/ 12 B...  | ABOVE PREMIUM | 1                    | Front       | 4                  |  |
| 104756        | 75452799992 | NEW BELGIUM MURAL VARIETY...     | ABOVE PREMIUM | 1                    | Front       | 4                  |  |
| 17198         | 8378322200  | SIERRA NEVADA PALE ALE 12/ 1...  | ABOVE PREMIUM | 1                    | Side 90     | 4                  |  |
| 46558         | 63848900188 | DOGFISH HEAD SEASONAL C 6/ ...   | ABOVE PREMIUM | 1                    | Front       | 4                  |  |
| 104227        | 3410001533  | LEINIES SPRITZEN VARIETY 12/ ... | ABOVE PREMIUM | 1                    | Top 90      | 3                  |  |
| 11951         | 73692011132 | GOOSE ISLAND IPA 6/ 12 BTL       | ABOVE PREMIUM | 1                    | Front       | 4                  |  |
| 107008        | 72383010612 | LAGUNITAS HAZY MEMORY 6/ 1...    | ABOVE PREMIUM | 1                    | Front       | 4                  |  |

Cooler Size: WAKEFERN FOOD CORP/HQ

Address: 1643 ROUTE 82

LAGRANGEVILLE , NY

| Name: 5_5 - 1 |             | W:384.00 in                     | D:24.00 in    | Avail Space: 2.09 in |             | Ht Space: 9.00 in |  |
|---------------|-------------|---------------------------------|---------------|----------------------|-------------|-------------------|--|
| ID            | UPC         | Name                            | Category      | HFacings             | Orientation | Units             |  |
| 44964         | 3354495041  | CORONA PREMIER 6/ 12 BTL        | ABOVE PREMIUM | 1                    | Front       | 4                 |  |
| 44966         | 3354495044  | CORONA PREMIER 12/ 12 CAN       | ABOVE PREMIUM | 1                    | Front       | 3                 |  |
| 66072         | 8769200673  | SAMUEL ADAMS 76 6/ 12 CAN       | ABOVE PREMIUM | 1                    | Front       | 8                 |  |
| 62048         | 7199009561  | BLUE MOON MANGO WHEAT 6/ ...    | ABOVE PREMIUM | 1                    | Front       | 4                 |  |
| 14141         | 78624311990 | FLYING DOG RAGING BITCH 6/ 1... | ABOVE PREMIUM | 1                    | Front       | 4                 |  |
| 65038         | 75452700885 | NEW BELGIUM VODOO JUICY ...     | ABOVE PREMIUM | 1                    | Front       | 8                 |  |
| 13060         | 75452700421 | NEW BELGIUM VODOO RANG...       | ABOVE PREMIUM | 1                    | Front       | 4                 |  |
| 65032         | 8378311010  | SIERRA NEVADA HAZY LITTLE ...   | ABOVE PREMIUM | 1                    | Front       | 8                 |  |
| 61673         | 63848900312 | DOGFISH HEAD 90 MINUTE IMP...   | ABOVE PREMIUM | 1                    | Front       | 4                 |  |
| 3492          | 3410051605  | LEINIES SEASONAL PRIMARY 6/ ... | ABOVE PREMIUM | 1                    | Front       | 4                 |  |
| 16140         | 81957801006 | TWO ROADS ROAD 2 RUIN 6/ 12...  | ABOVE PREMIUM | 1                    | Front       | 4                 |  |
| 10845         | 72383000009 | LAGUNITAS IPA 6/ 12 BTL         | ABOVE PREMIUM | 1                    | Front       | 4                 |  |



# SHOPRITE\_244

Cooler Size: WAKEFERN FOOD CORP/HQ



# Store # 244

Address: 1643 ROUTE 82

LAGRANGEVILLE , NY

|              |             |                 |          |         |                   |
|--------------|-------------|-----------------|----------|---------|-------------------|
| SHOPRITE_244 | Store # 244 | H: 5 ft 3.00 in | W: 52 ft | D: 2 ft | # of segments: 13 |
|--------------|-------------|-----------------|----------|---------|-------------------|

| Name: 5_1 - 1 |             | W:384.00 in                       | D:30.00 in    | Avail Space: 0.52 in |             | Ht Space: 19.00 in |  |
|---------------|-------------|-----------------------------------|---------------|----------------------|-------------|--------------------|--|
| ID            | UPC         | Name                              | Category      | HFacings             | Orientation | Units              |  |
| 10870         | 72383010009 | LAGUNITAS IPA 12/ 12 BTL          | ABOVE PREMIUM | 2                    | Side        | 9                  |  |
| 7044          | 64286090024 | FOUNDERS ALL DAY SESSION I...     | ABOVE PREMIUM | 1                    | Top         | 9                  |  |
| 54416         | 79837330085 | MAGIC HAT IPA PLATLIST 15/ 12 ... | ABOVE PREMIUM | 1                    | Side 90     | 6                  |  |
| 75134         | 68174500134 | BLUE POINT TOASTED LAGER 1...     | ABOVE PREMIUM | 1                    | Side 90     | 3                  |  |
| 52926         | 81601402080 | SOUTHERN TIER OVERPACKD 1...      | ABOVE PREMIUM | 1                    | Side 90     | 6                  |  |
| 10031         | 7167007106  | SARANAC 12 BEERS 12/ 12 BTL       | ABOVE PREMIUM | 1                    | Front       | 6                  |  |
| 1341          | 1820012998  | LANDSHARK 12/ 12 BTL              | ABOVE PREMIUM | 1                    | Top         | 6                  |  |
| 1850          | 1820096721  | MICHELOB ULTRA 18/ 12 CAN         | ABOVE PREMIUM | 1                    | Top         | 12                 |  |
| 1830          | 1820096624  | MICHELOB ULTRA 18/ 12 BTL         | ABOVE PREMIUM | 1                    | Front       | 8                  |  |

| Name: 5_2 - 1 |             | W:384.00 in                     | D:24.00 in    | Avail Space: 2.41 in |             | Ht Space: 10.00 in |  |
|---------------|-------------|---------------------------------|---------------|----------------------|-------------|--------------------|--|
| ID            | UPC         | Name                            | Category      | HFacings             | Orientation | Units              |  |
| 51729         | 85689500374 | GOLDEN ROAD WOLF PUP SES...     | ABOVE PREMIUM | 1                    | Side 90     | 2                  |  |
| 59698         | 64286090005 | FOUNDERS CENTENNIAL IPA 15...   | ABOVE PREMIUM | 1                    | Side 90     | 2                  |  |
| 85112         | 68174500145 | BLUE POINT SEASONAL 18/ 12 C... | ABOVE PREMIUM | 1                    | Side 90     | 2                  |  |
| 61483         | 3061300074  | BROOKLYN VARIETY PACK 12/ 1...  | ABOVE PREMIUM | 1                    | Top         | 6                  |  |
| 90200         | 7167009298  | SARANAC 100 IPA 12/ 12 CAN      | ABOVE PREMIUM | 1                    | Side 90     | 2                  |  |
| 1376          | 1820015981  | SHOCK TOP BELGIAN WHITE 12...   | ABOVE PREMIUM | 1                    | Front       | 3                  |  |
| 69618         | 1820020080  | BUD LIGHT ORANGE 12/ 12 BTL     | ABOVE PREMIUM | 1                    | Front       | 3                  |  |
| 1849          | 1820096715  | MICHELOB ULTRA 24/ 12 CAN       | ABOVE PREMIUM | 2                    | Front       | 6                  |  |

| Name: 5_3 - 1 |             | W:384.00 in                     | D:24.00 in    | Avail Space: 0.83 in |             | Ht Space: 10.00 in |  |
|---------------|-------------|---------------------------------|---------------|----------------------|-------------|--------------------|--|
| ID            | UPC         | Name                            | Category      | HFacings             | Orientation | Units              |  |
| 48655         | 85961200129 | 21ST AMENDMENT VARIETY PA...    | ABOVE PREMIUM | 1                    | Side 90     | 4                  |  |
| 15963         | 81760601028 | CAPTAIN LAWRENCE IPA 12/ 12 ... | ABOVE PREMIUM | 1                    | Front       | 3                  |  |
| 107049        | 81760601029 | CAPTAIN LAWRENCE CITRA DR...    | ABOVE PREMIUM | 1                    | Front       | 4                  |  |
| 107050        | 81760601085 | CAPTAIN LAWRENCE CLASSIC L...   | ABOVE PREMIUM | 1                    | Front       | 4                  |  |
| 19137         | 85375900031 | SOUTHERN TIER PACK OF PALE...   | ABOVE PREMIUM | 1                    | Front       | 3                  |  |
| 138           | 0945001150  | SARANAC IPA 6/ 12 BTL           | ABOVE PREMIUM | 1                    | Front       | 4                  |  |
| 1620          | 1820028156  | SHOCK TOP BELGIAN WHITE 15...   | ABOVE PREMIUM | 1                    | Side 90     | 2                  |  |
| 5922          | 6206705155  | LABATT BLUE 12/ 11.5 BTL        | ABOVE PREMIUM | 1                    | Front       | 3                  |  |
| 1428          | 1820018992  | BUD LIGHT PLATINUM 12/ 12 BTL   | ABOVE PREMIUM | 1                    | Front       | 3                  |  |
| 1228          | 1820005990  | MICHELOB ULTRA 12/ 12 BTL       | ABOVE PREMIUM | 2                    | Front       | 6                  |  |

| Name: 5_4 - 1 |             | W:384.00 in                     | D:24.00 in    | Avail Space: 1.50 in |             | Ht Space: 10.00 in |  |
|---------------|-------------|---------------------------------|---------------|----------------------|-------------|--------------------|--|
| ID            | UPC         | Name                            | Category      | HFacings             | Orientation | Units              |  |
| 6158          | 63123440003 | SWEETWATER IPA 6/12 BTL         | ABOVE PREMIUM | 1                    | Front       | 4                  |  |
| 15961         | 81760601020 | CAPTAIN LAWRENCE IPA 6/ 12 B... | ABOVE PREMIUM | 1                    | Front       | 4                  |  |
| 75138         | 81760601076 | CAPTAIN LAWRENCE HOP COM...     | ABOVE PREMIUM | 1                    | Side        | 6                  |  |
| 107122        | 3061300051  | BROOKLYN SEASONAL 6/ 12 CAN     | ABOVE PREMIUM | 1                    | Front       | 8                  |  |
| 2638          | 3061300053  | BROOKLYN SEASONAL 6/ 12 BTL     | ABOVE PREMIUM | 1                    | Front       | 4                  |  |
| 1345          | 1820013986  | SHOCK TOP BELGIAN WHITE 6/ ...  | ABOVE PREMIUM | 1                    | Front       | 4                  |  |
| 89759         | 1820020139  | BUD LIGHT LEMON TEA SEASO...    | ABOVE PREMIUM | 1                    | Front       | 3                  |  |
| 1356          | 1820014990  | BUD LIGHT LIME 12/ 12 BTL       | ABOVE PREMIUM | 1                    | Front       | 3                  |  |
| 1121          | 1820000884  | MICHELOB LIGHT 12/ 12 BTL       | ABOVE PREMIUM | 1                    | Front       | 3                  |  |
| 65828         | 1820020083  | MICHELOB ULTRA PURE GOLD ...    | ABOVE PREMIUM | 2                    | Side        | 4                  |  |
| 1241          | 1820006991  | MICHELOB ULTRA 12/ 12 CAN       | ABOVE PREMIUM | 1                    | Top 90      | 3                  |  |

| Name: 5_5 - 1 |             | W:384.00 in                   | D:24.00 in    | Avail Space: 2.09 in |             | Ht Space: 9.00 in |  |
|---------------|-------------|-------------------------------|---------------|----------------------|-------------|-------------------|--|
| ID            | UPC         | Name                          | Category      | HFacings             | Orientation | Units             |  |
| 5177          | 60690500830 | ITHACA FLOWER POWER 6/ 12 ... | ABOVE PREMIUM | 1                    | Front       | 4                 |  |
| 52893         | 85155900701 | MILLHOUSE KOLD ONE 4/ 16 CAN  | ABOVE PREMIUM | 1                    | Front       | 4                 |  |



Cooler Size: WAKEFERN FOOD CORP/HQ

Address: 1643 ROUTE 82

LAGRANGEVILLE , NY

|        |             |                                 |               |   |        |   |
|--------|-------------|---------------------------------|---------------|---|--------|---|
| 52632  | 86326700005 | NEWBURGH MEGA BOSS 4/ 16 C...   | ABOVE PREMIUM | 1 | Front  | 4 |
| 90228  | 86036700072 | SLOOP JUICE BOMB IPA 6/ 12 CAN  | ABOVE PREMIUM | 1 | Front  | 8 |
| 75140  | 81760601081 | CAPTAIN LAWRENCE SEASONA...     | ABOVE PREMIUM | 1 | Side   | 6 |
| 92006  | 68174500215 | BLUE POINT THE IPA 6/ 12 CAN    | ABOVE PREMIUM | 1 | Side   | 6 |
| 19135  | 85375900027 | SOUTHERN TIER 2XIPA 6/ 12 BTL   | ABOVE PREMIUM | 1 | Front  | 4 |
| 89758  | 1820020140  | BUD LIGHT LEMON TEA SEASO...    | ABOVE PREMIUM | 1 | Front  | 4 |
| 107322 | 1820020209  | BUD LIGHT LEMONADE 12/ 12 C...  | ABOVE PREMIUM | 1 | Top 90 | 3 |
| 1357   | 1820014991  | BUD LIGHT LIME 6/ 12 BTL        | ABOVE PREMIUM | 1 | Front  | 4 |
| 104747 | 1820020210  | BUD LIGHT PEELS VARIETY 12/ ... | ABOVE PREMIUM | 1 | Top 90 | 3 |
| 65024  | 1820020082  | MICHELOB ULTRA PURE GOLD ...    | ABOVE PREMIUM | 1 | Front  | 4 |
| 1227   | 1820005989  | MICHELOB ULTRA 6/ 12 BTL        | ABOVE PREMIUM | 1 | Front  | 4 |
| 86792  | 85777500729 | SAINT ARCHER GOLD 12/ 12 CAN    | ABOVE PREMIUM | 1 | Top 90 | 3 |



# SHOPRITE\_244

Cooler Size: WAKEFERN FOOD CORP/HQ



## Store # 244

Address: 1643 ROUTE 82

LAGRANGEVILLE , NY

|              |             |                 |          |         |                   |
|--------------|-------------|-----------------|----------|---------|-------------------|
| SHOPRITE_244 | Store # 244 | H: 5 ft 3.00 in | W: 52 ft | D: 2 ft | # of segments: 13 |
|--------------|-------------|-----------------|----------|---------|-------------------|

| Name: 12_6 |            | W:240.00 in                | D:31.00 in | Avail Space: 3.21 in |             | Ht Space: 11.00 in |    |
|------------|------------|----------------------------|------------|----------------------|-------------|--------------------|----|
| ID         | UPC        | Name                       | Category   | HFacings             | Orientation | Units              |    |
| 23915      | 8992441003 | YUENGLING LAGER 24/ 12 BTL | PREMIUM    | 1                    | Side        |                    | 2  |
| 10234      | 7199010020 | COORS BANQUET 18/ 12 CAN   | PREMIUM    | 1                    | Side 90     |                    | 8  |
| 10352      | 7199030078 | COORS LIGHT 18/ 12 BTL     | PREMIUM    | 1                    | Front       |                    | 8  |
| 10329      | 7199030017 | COORS LIGHT 18/ 12 CAN     | PREMIUM    | 2                    | Side 90     |                    | 12 |
| 10380      | 7199031600 | COORS LIGHT 24/ 12 CAN     | PREMIUM    | 2                    | Side 90     |                    | 14 |
| 3532       | 3410057256 | LITE 18/ 12 BTL            | PREMIUM    | 1                    | Side        |                    | 4  |
| 3541       | 3410057306 | LITE 24/ 12 CAN            | PREMIUM    | 1                    | Side 90     |                    | 4  |
| 1664       | 1820053168 | BUD LIGHT 24/ 12 CAN       | PREMIUM    | 1                    | Side 90     |                    | 4  |

| Name: 12_8 |            | W:240.00 in                   | D:22.00 in | Avail Space: 1.68 in |             | Ht Space: 11.00 in |   |
|------------|------------|-------------------------------|------------|----------------------|-------------|--------------------|---|
| ID         | UPC        | Name                          | Category   | HFacings             | Orientation | Units              |   |
| 107121     | 8992477013 | YUENGLING FLIGHT 12/ 12 BTL   | PREMIUM    | 1                    | Front       |                    | 2 |
| 23909      | 8992429386 | YUENGLING BLACK AND TAN 12... | PREMIUM    | 1                    | Front       |                    | 2 |
| 23909      | 8992429386 | YUENGLING BLACK AND TAN 12... | PREMIUM    | 1                    | Side        |                    | 2 |
| 10353      | 7199030079 | COORS LIGHT 24/ 12 BTL (HG)   | PREMIUM    | 2                    | Front       |                    | 4 |
| 3531       | 3410057243 | LITE 24/ 12 BTL (HG)          | PREMIUM    | 1                    | Front       |                    | 2 |
| 3565       | 3410057509 | LITE 12/ 12 BTL               | PREMIUM    | 1                    | Side        |                    | 2 |

| Name: 12_9 |            | W:240.00 in                    | D:22.00 in    | Avail Space: 1.50 in |             | Ht Space: 10.00 in |   |
|------------|------------|--------------------------------|---------------|----------------------|-------------|--------------------|---|
| ID         | UPC        | Name                           | Category      | HFacings             | Orientation | Units              |   |
| 23902      | 8992427896 | YUENGLING LAGER 12/ 12 BTL     | PREMIUM       | 1                    | Front       |                    | 3 |
| 23902      | 8992427896 | YUENGLING LAGER 12/ 12 BTL     | PREMIUM       | 1                    | Side        |                    | 2 |
| 68457      | 8992433125 | YUENGLING GOLDEN PILSNER ...   | PREMIUM       | 1                    | Side        |                    | 2 |
| 105972     | 1820020202 | BUDWEISER NITRO GOLD 6/ 12 ... | PREMIUM       | 1                    | Front       |                    | 8 |
| 10471      | 7199076400 | KILLIANS IRISH RED 12/ 12 BTL  | ABOVE PREMIUM | 1                    | Side        |                    | 2 |
| 10348      | 7199030069 | COORS LIGHT 12/ 12 BTL         | PREMIUM       | 2                    | Front       |                    | 4 |
| 10367      | 7199030104 | COORS LIGHT 9/ 16 BTL (AL)     | PREMIUM       | 1                    | Front       |                    | 2 |
| 3552       | 3410057340 | LITE 18/ 12 CAN                | PREMIUM       | 1                    | Top         |                    | 4 |
| 3305       | 3410015509 | MILLER 64 12/ 12 BTL           | PREMIUM       | 1                    | Side        |                    | 2 |

| Name: 12_10 |            | W:240.00 in                    | D:22.00 in    | Avail Space: 2.10 in |             | Ht Space: 15.00 in |   |
|-------------|------------|--------------------------------|---------------|----------------------|-------------|--------------------|---|
| ID          | UPC        | Name                           | Category      | HFacings             | Orientation | Units              |   |
| 23900       | 8992427891 | YUENGLING LAGER 6/ 12 BTL      | PREMIUM       | 1                    | Front       |                    | 4 |
| 23903       | 8992427898 | YUENGLING LAGER 12/ 12 CAN     | PREMIUM       | 1                    | Side 90     |                    | 4 |
| 69239       | 8992433567 | YUENGLING GOLDEN PILSNER ...   | PREMIUM       | 1                    | Front       |                    | 4 |
| 73080       | 8992433481 | YUENGLING GOLDEN PILSNER ...   | PREMIUM       | 1                    | Side 90     |                    | 4 |
| 10452       | 7199070002 | KILLIANS IRISH RED 6/ 12 BTL   | ABOVE PREMIUM | 1                    | Front       |                    | 4 |
| 10155       | 7199000008 | COORS LIGHT 6/ 12 CAN          | PREMIUM       | 1                    | Front       |                    | 8 |
| 10322       | 7199030005 | COORS LIGHT 6/ 12 BTL          | PREMIUM       | 1                    | Front       |                    | 4 |
| 107283      | 7199070028 | COORS LIGHT 12/ 12 CAN (SLEEK) | PREMIUM       | 2                    | Top 90      |                    | 6 |
| 3514        | 3410057023 | LITE 9/ 16 BTL (AL)            | PREMIUM       | 1                    | Front       |                    | 2 |
| 3564        | 3410057505 | LITE 6/ 12 BTL                 | PREMIUM       | 1                    | Front       |                    | 4 |
| 3579        | 3410057636 | LITE 12/ 12 CAN                | PREMIUM       | 1                    | Side 90     |                    | 4 |
| 651         | 1820000106 | BUD LIGHT 6/ 12 CAN            | PREMIUM       | 1                    | Front       |                    | 8 |

# SHOPRITE\_244

## Store # 244

Cooler Size: WAKEFERN FOOD CORP/HQ

Address: 1643 ROUTE 82

LAGRANGEVILLE , NY



|              |             |                 |          |         |                   |
|--------------|-------------|-----------------|----------|---------|-------------------|
| SHOPRITE_244 | Store # 244 | H: 5 ft 3.00 in | W: 52 ft | D: 2 ft | # of segments: 13 |
|--------------|-------------|-----------------|----------|---------|-------------------|

| Name: 12_6 |            | W:240.00 in               | D:31.00 in | Avail Space: 3.21 in |             | Ht Space: 11.00 in |  |
|------------|------------|---------------------------|------------|----------------------|-------------|--------------------|--|
| ID         | UPC        | Name                      | Category   | HFacings             | Orientation | Units              |  |
| 1670       | 1820053308 | BUD LIGHT 18/ 12 BTL      | PREMIUM    | 1                    | Front       | 8                  |  |
| 1672       | 1820053349 | BUD LIGHT 24/ 12 BTL (HG) | PREMIUM    | 1                    | Side        | 4                  |  |
| 1672       | 1820053349 | BUD LIGHT 24/ 12 BTL (HG) | PREMIUM    | 1                    | Side        | 4                  |  |
| 1310       | 1820011308 | BUD 18/ 12 BTL            | PREMIUM    | 1                    | Side        | 4                  |  |
| 1307       | 1820011218 | BUD 18/ 12 CAN            | PREMIUM    | 1                    | Top         | 12                 |  |
| 1312       | 1820011349 | BUD 24/ 12 BTL (HG)       | PREMIUM    | 2                    | Side        | 8                  |  |
| 2326       | 2210011219 | PABST 30/ 12 CAN          | ECONOMY    | 1                    | Side        | 4                  |  |
| 3193       | 3410001341 | HIGH LIFE 30/ 12 CAN      | ECONOMY    | 1                    | Side        | 2                  |  |

| Name: 12_8 |             | W:240.00 in                    | D:22.00 in    | Avail Space: 1.68 in |             | Ht Space: 11.00 in |  |
|------------|-------------|--------------------------------|---------------|----------------------|-------------|--------------------|--|
| ID         | UPC         | Name                           | Category      | HFacings             | Orientation | Units              |  |
| 1664       | 1820053168  | BUD LIGHT 24/ 12 CAN           | PREMIUM       | 2                    | Top         | 8                  |  |
| 1667       | 1820053218  | BUD LIGHT 18/ 12 CAN           | PREMIUM       | 2                    | Side 90     | 4                  |  |
| 1304       | 1820011168  | BUD 24/ 12 CAN                 | PREMIUM       | 1                    | Top         | 4                  |  |
| 1304       | 1820011168  | BUD 24/ 12 CAN                 | PREMIUM       | 1                    | Side 90     | 2                  |  |
| 68563      | 1820020068  | BUDWEISER RESERVE SEASON...    | PREMIUM       | 1                    | Side        | 2                  |  |
| 1071       | 1820000801  | BUSCH LIGHT 12/ 12 CAN         | ECONOMY       | 1                    | Side 90     | 4                  |  |
| 3202       | 3410001636  | HIGH LIFE 12/ 12 CAN           | ECONOMY       | 1                    | Side 90     | 4                  |  |
| 3198       | 3410001509  | HIGH LIFE 12/ 12 BTL           | ECONOMY       | 1                    | Side        | 2                  |  |
| 58705      | 63848900306 | DOGFISH HEAD 60 MINUTE IPA ... | ABOVE PREMIUM | 2                    | Front       | 16                 |  |

| Name: 12_9 |            | W:240.00 in                    | D:22.00 in    | Avail Space: 1.50 in |             | Ht Space: 10.00 in |  |
|------------|------------|--------------------------------|---------------|----------------------|-------------|--------------------|--|
| ID         | UPC        | Name                           | Category      | HFacings             | Orientation | Units              |  |
| 1056       | 1820000769 | BUD LIGHT 12/ 12 BTL           | PREMIUM       | 2                    | Side        | 4                  |  |
| 1667       | 1820053218 | BUD LIGHT 18/ 12 CAN           | PREMIUM       | 3                    | Side 90     | 6                  |  |
| 1297       | 1820011047 | BUD 12/ 12 CAN                 | PREMIUM       | 1                    | Top         | 4                  |  |
| 1058       | 1820000771 | BUD 12/ 12 BTL                 | PREMIUM       | 1                    | Side        | 2                  |  |
| 1058       | 1820000771 | BUD 12/ 12 BTL                 | PREMIUM       | 1                    | Side        | 2                  |  |
| 1684       | 1820061047 | BUSCH 12/ 12 CAN               | ECONOMY       | 1                    | Side 90     | 4                  |  |
| 9886       | 7143934450 | ROLLING ROCK 12/ 12 CAN        | ECONOMY       | 1                    | Side 90     | 4                  |  |
| 9905       | 7143945712 | ROLLING ROCK 12/ 12 BTL        | ECONOMY       | 1                    | Front       | 2                  |  |
| 2763       | 3410000007 | HIGH LIFE 6/ 16 CAN            | ECONOMY       | 1                    | Side        | 2                  |  |
| 22099      | 8769283201 | TWISTED TEA ORIGINAL 1/24 C... | ABOVE PREMIUM | 2                    | Front       | 14                 |  |

| Name: 12_10 |            | W:240.00 in                 | D:22.00 in    | Avail Space: 2.10 in |             | Ht Space: 15.00 in |  |
|-------------|------------|-----------------------------|---------------|----------------------|-------------|--------------------|--|
| ID          | UPC        | Name                        | Category      | HFacings             | Orientation | Units              |  |
| 1083        | 1820000833 | BUD LIGHT 6/ 12 BTL         | PREMIUM       | 1                    | Front       | 4                  |  |
| 1469        | 1820020998 | BUD LIGHT 8/ 16 BTL (AL)    | PREMIUM       | 1                    | Side        | 2                  |  |
| 1659        | 1820053047 | BUD LIGHT 12/ 12 CAN        | PREMIUM       | 2                    | Side 90     | 8                  |  |
| 1084        | 1820000834 | BUD 6/ 12 BTL               | PREMIUM       | 1                    | Front       | 4                  |  |
| 587         | 1820000016 | BUD 6/ 12 CAN               | PREMIUM       | 1                    | Side        | 4                  |  |
| 2241        | 2210000170 | PABST 12/ 12 CAN            | ECONOMY       | 1                    | Side 90     | 4                  |  |
| 624         | 1820000063 | BUSCH 6/ 16 CAN             | ECONOMY       | 1                    | Front       | 4                  |  |
| 3197        | 3410001505 | HIGH LIFE 6/ 12 BTL         | ECONOMY       | 1                    | Front       | 4                  |  |
| 11307       | 7289000030 | BUCKLER NEAR BEER 6/ 12 BTL | ABOVE PREMIUM | 1                    | Front       | 3                  |  |
| 16707       | 8248812700 | BECKS NEAR BEER 6/ 12 BTL   | NA BEER       | 1                    | Front       | 4                  |  |
| 1065        | 1820000784 | ODOULS NEAR BEER 6/ 12 BTL  | NA BEER       | 1                    | Front       | 4                  |  |
| 1705        | 1820079047 | ODOULS NEAR BEER 12/ 12 CAN | NA BEER       | 1                    | Side 90     | 4                  |  |

# SHOPRITE\_244

Store # 244

Cooler Size: WAKEFERN FOOD CORP/HQ

Address: 1643 ROUTE 82

LAGRANGEVILLE , NY

|              |             |                 |          |         |                   |
|--------------|-------------|-----------------|----------|---------|-------------------|
| SHOPRITE_244 | Store # 244 | H: 5 ft 3.00 in | W: 52 ft | D: 2 ft | # of segments: 13 |
|--------------|-------------|-----------------|----------|---------|-------------------|

| Name: 12_6 |            | W:240.00 in                  | D:31.00 in | Avail Space: 3.21 in |             | Ht Space: 11.00 in |  |
|------------|------------|------------------------------|------------|----------------------|-------------|--------------------|--|
| ID         | UPC        | Name                         | Category   | HFacings             | Orientation | Units              |  |
| 45405      | 7199048045 | KEYSTONE LIGHT 15/ 12 CAN    | ECONOMY    | 1                    | Top         | 8                  |  |
| 13892      | 7825000382 | STEEL RESERVE 211 12/ 12 CAN | ECONOMY    | 1                    | Side 90     | 4                  |  |
| 61975      | 1820020077 | NATURAL LIGHT 15/ 12 CAN     | ECONOMY    | 1                    | Side 90     | 4                  |  |
| 66288      | 1820028443 | NATURAL ICE 15/ 12 CAN       | ECONOMY    | 1                    | Side 90     | 4                  |  |
| 92510      | 1820020133 | NATURDAYS 12/ 12 CAN         | ECONOMY    | 1                    | Side 90     | 4                  |  |

| Name: 12_8 |             | W:240.00 in                   | D:22.00 in    | Avail Space: 1.68 in |             | Ht Space: 11.00 in |  |
|------------|-------------|-------------------------------|---------------|----------------------|-------------|--------------------|--|
| ID         | UPC         | Name                          | Category      | HFacings             | Orientation | Units              |  |
| 89768      | 75452701021 | NEW BELGIUM VODOO RANG...     | ABOVE PREMIUM | 1                    | Front       | 8                  |  |
| 43248      | 64286013024 | FOUNDERS ALL DAY SESSION I... | ABOVE PREMIUM | 2                    | Front       | 16                 |  |
| 89609      | 72383001192 | LAGUNITAS IPA 1/ 19.2 CAN     | ABOVE PREMIUM | 2                    | Front       | 16                 |  |
| 10346      | 7199030065  | COORS LIGHT 1/24 CAN          | PREMIUM       | 2                    | Front       | 14                 |  |
| 10243      | 7199010071  | COORS BANQUET 1/24 CAN        | PREMIUM       | 3                    | Front       | 21                 |  |
| 1521       | 1820025001  | BUD LIGHT 1/25 CAN            | PREMIUM       | 2                    | Front       | 14                 |  |
| 2761       | 3410000005  | HIGH LIFE 1/24 CAN            | ECONOMY       | 2                    | Front       | 14                 |  |
| 1528       | 1820025008  | NATURAL ICE 1/25 CAN          | ECONOMY       | 3                    | Front       | 21                 |  |

| Name: 12_9 |             | W:240.00 in                   | D:22.00 in    | Avail Space: 1.50 in |             | Ht Space: 10.00 in |  |
|------------|-------------|-------------------------------|---------------|----------------------|-------------|--------------------|--|
| ID         | UPC         | Name                          | Category      | HFacings             | Orientation | Units              |  |
| 22077      | 8769275231  | TWISTED TEA HALF AND HALF ... | ABOVE PREMIUM | 2                    | Front       | 14                 |  |
| 66064      | 61300874829 | ARNOLD PALMER SPIKED HALF ... | ABOVE PREMIUM | 2                    | Front       | 14                 |  |
| 98777      | 61300875404 | ARNOLD PALMER SPIKED ICED ... | ABOVE PREMIUM | 2                    | Front       | 14                 |  |
| 98779      | 61300875407 | ARNOLD PALMER SPIKED LEMO...  | ABOVE PREMIUM | 2                    | Front       | 14                 |  |
| 6462       | 63598524583 | MIKES HARDER LEMONADE 1/2...  | ABOVE PREMIUM | 3                    | Front       | 21                 |  |
| 6470       | 63598524985 | MIKES HARDER CRANBERRY L...   | ABOVE PREMIUM | 2                    | Front       | 14                 |  |
| 6435       | 63598513215 | MIKES HARDER BLACKCHERRY ...  | ABOVE PREMIUM | 2                    | Front       | 14                 |  |
| 56771      | 7031001483  | SEAGRAMS ESCAPES SPIKED J...  | ABOVE PREMIUM | 2                    | Front       | 14                 |  |

| Name: 12_10 |             | W:240.00 in                  | D:22.00 in    | Avail Space: 2.10 in |             | Ht Space: 15.00 in |  |
|-------------|-------------|------------------------------|---------------|----------------------|-------------|--------------------|--|
| ID          | UPC         | Name                         | Category      | HFacings             | Orientation | Units              |  |
| 10478       | 7199077005  | COORS EDGE NA 6/ 12 BTL      | NA BEER       | 1                    | Front       | 4                  |  |
| 9452        | 7089701331  | FOSTERS 1/25.4 CAN           | ABOVE PREMIUM | 3                    | Front       | 18                 |  |
| 9488        | 7089718331  | FOSTERS PREMIUM 1/25.4 CAN   | ABOVE PREMIUM | 2                    | Front       | 12                 |  |
| 11327       | 7289000119  | HEINEKEN 1/24 CAN            | ABOVE PREMIUM | 2                    | Front       | 14                 |  |
| 15415       | 8066095643  | CORONA 1/24 CAN              | ABOVE PREMIUM | 2                    | Front       | 14                 |  |
| 63674       | 63598526038 | WHITE CLAW BLACK CHERRY 1... | ABOVE PREMIUM | 2                    | Front       | 16                 |  |
| 97015       | 63598526039 | WHITE CLAW MANGO 1/19.2 CAN  | ABOVE PREMIUM | 2                    | Front       | 16                 |  |

| Name: 12_7 |            | W:48.00 in                 | D:22.00 in    | Avail Space: 2.32 in |             | Ht Space: 11.00 in |  |
|------------|------------|----------------------------|---------------|----------------------|-------------|--------------------|--|
| ID         | UPC        | Name                       | Category      | HFacings             | Orientation | Units              |  |
| 8973       | 7031000150 | GENESEE CREAM ALE 1/24 CAN | ECONOMY       | 2                    | Front       | 14                 |  |
| 75033      | 7031001532 | GENESEE BLACK 1/24 CAN     | ABOVE PREMIUM | 2                    | Front       | 14                 |  |
| 10436      | 7199048024 | KEYSTONE LIGHT 1/24 CAN    | ECONOMY       | 2                    | Front       | 14                 |  |
| 10412      | 7199047712 | KEYSTONE ICE 1/24 CAN      | ECONOMY       | 2                    | Front       | 14                 |  |
| 13877      | 7825000328 | STEEL RESERVE 211 1/24 CAN | ECONOMY       | 2                    | Front       | 14                 |  |
| 1522       | 1820025002 | NATURAL LIGHT 1/25 CAN     | ECONOMY       | 2                    | Front       | 14                 |  |
| 1533       | 1820025013 | NATTY DADDY 1/25 CAN       | ECONOMY       | 4                    | Front       | 28                 |  |





# SHOPRITE\_244

Store # 244

|              |             |                 |          |         |                   |
|--------------|-------------|-----------------|----------|---------|-------------------|
| SHOPRITE_244 | Store # 244 | H: 5 ft 3.00 in | W: 52 ft | D: 2 ft | # of segments: 13 |
|--------------|-------------|-----------------|----------|---------|-------------------|

|               |             |            |                      |                    |
|---------------|-------------|------------|----------------------|--------------------|
| Name: 5_1 - 1 | W:384.00 in | D:30.00 in | Avail Space: 0.52 in | Ht Space: 19.00 in |
|---------------|-------------|------------|----------------------|--------------------|

| ID     | UPC         | Name                            | Category      | HFacings | Orientation | Units |
|--------|-------------|---------------------------------|---------------|----------|-------------|-------|
| 83125  | 63598526089 | WHITE CLAW BLACK CHERRY ...     | ABOVE PREMIUM | 1        | Front       | 12    |
| 45151  | 63598554890 | WHITE CLAW VARIETY PACK 12...   | ABOVE PREMIUM | 4        | Side        | 36    |
| 65035  | 8769200686  | TRULY VARIETY BERRY 12/12 C...  | ABOVE PREMIUM | 1        | Side        | 9     |
| 87955  | 8769200804  | TRULY VARIETY TROPICAL 12/1...  | ABOVE PREMIUM | 1        | Side        | 9     |
| 105977 | 1820020208  | BUD LIGHT SELTZER VARIETY ...   | ABOVE PREMIUM | 1        | Side        | 9     |
| 15329  | 8043280290  | SEAGRAMS ESCAPES VARIETY...     | ABOVE PREMIUM | 1        | Side        | 6     |
| 22096  | 8769283134  | TWISTED TEA ORIGINAL 12/12 ...  | ABOVE PREMIUM | 1        | Side 90     | 9     |
| 6433   | 63598512998 | MIKES HARD VARIETY PACK 12...   | ABOVE PREMIUM | 1        | Side        | 6     |
| 65025  | 63598526042 | MIKES HARDER VARIETY PACK...    | ABOVE PREMIUM | 1        | Side 90     | 9     |
| 21815  | 8769200017  | ANGRY ORCHARD EXPLORER ...      | ABOVE PREMIUM | 1        | Front       | 7     |
| 14094  | 78615000014 | STELLA ARTOIS 12/11.2 BTL       | ABOVE PREMIUM | 1        | Front       | 8     |
| 14094  | 78615000014 | STELLA ARTOIS 12/11.2 BTL       | ABOVE PREMIUM | 2        | Side        | 12    |
| 16691  | 8248812300  | BECKS 12/12 BTL                 | ABOVE PREMIUM | 1        | Side        | 6     |
| 11342  | 7289000159  | HEINEKEN LIGHT 12/12 BTL        | ABOVE PREMIUM | 1        | Side        | 6     |
| 11300  | 7289000016  | HEINEKEN 12/12 BTL              | ABOVE PREMIUM | 1        | Side        | 6     |
| 11300  | 7289000016  | HEINEKEN 12/12 BTL              | ABOVE PREMIUM | 1        | Side        | 6     |
| 15436  | 8066095757  | MODELO ESPECIAL 12/12 BTL       | ABOVE PREMIUM | 1        | Front       | 6     |
| 15403  | 8066095615  | CORONA 12/12 BTL                | ABOVE PREMIUM | 3        | Front       | 21    |
| 15403  | 8066095615  | CORONA 12/12 BTL                | ABOVE PREMIUM | 1        | Front       | 7     |
| 21940  | 8769201103  | SAMUEL ADAMS SEASONAL 12...     | ABOVE PREMIUM | 2        | Front       | 14    |
| 21988  | 8769229103  | SAMUEL ADAMS VARIETY PAC...     | ABOVE PREMIUM | 1        | Front       | 7     |
| 10183  | 7199009516  | BLUE MOON BELGIAN WHITE 1...    | ABOVE PREMIUM | 2        | Side        | 12    |
| 10202  | 7199009554  | BLUE MOON BREWMASTER VA...      | ABOVE PREMIUM | 1        | Side        | 6     |
| 13010  | 75452700024 | NEW BELGIUM FAT TIRE 12/12 ...  | ABOVE PREMIUM | 1        | Front       | 7     |
| 3494   | 3410051607  | LEINIES SEASONAL PRIMARY 1...   | ABOVE PREMIUM | 1        | Front       | 6     |
| 58827  | 73692011651 | GOOSE ISLAND IPA 15/12 CAN      | ABOVE PREMIUM | 1        | Side 90     | 6     |
| 10870  | 72383010009 | LAGUNITAS IPA 12/12 BTL         | ABOVE PREMIUM | 2        | Side        | 9     |
| 7044   | 64286090024 | FOUNDERS ALL DAY SESSION ...    | ABOVE PREMIUM | 1        | Top         | 9     |
| 54416  | 79837330085 | MAGIC HAT IPA PLATLIST 15/12... | ABOVE PREMIUM | 1        | Side 90     | 6     |
| 75134  | 68174500134 | BLUE POINT TOASTED LAGER ...    | ABOVE PREMIUM | 1        | Side 90     | 3     |
| 52926  | 81601402080 | SOUTHERN TIER OVERPACKD ...     | ABOVE PREMIUM | 1        | Side 90     | 6     |
| 10031  | 7167007106  | SARANAC 12 BEERS 12/12 BTL      | ABOVE PREMIUM | 1        | Front       | 6     |
| 1341   | 1820012998  | LANDSHARK 12/12 BTL             | ABOVE PREMIUM | 1        | Top         | 6     |
| 1850   | 1820096721  | MICHELOB ULTRA 18/12 CAN        | ABOVE PREMIUM | 1        | Top         | 12    |
| 1830   | 1820096624  | MICHELOB ULTRA 18/12 BTL        | ABOVE PREMIUM | 1        | Front       | 8     |

|               |             |            |                      |                    |
|---------------|-------------|------------|----------------------|--------------------|
| Name: 5_2 - 1 | W:384.00 in | D:24.00 in | Avail Space: 2.41 in | Ht Space: 10.00 in |
|---------------|-------------|------------|----------------------|--------------------|

| ID     | UPC         | Name                            | Category      | HFacings | Orientation | Units |
|--------|-------------|---------------------------------|---------------|----------|-------------|-------|
| 106595 | 63598580006 | WHITE CLAW VARIETY PACK 12...   | ABOVE PREMIUM | 1        | Top 90      | 3     |
| 93496  | 63598510033 | WHITE CLAW MANGO 12/12 CAN      | ABOVE PREMIUM | 1        | Top 90      | 3     |
| 104728 | 3354400043  | CORONA SELTZER VARIETY 12/...   | ABOVE PREMIUM | 2        | Top 90      | 6     |
| 68882  | 8769200678  | TRULY WILD BERRY 6/12 CAN       | ABOVE PREMIUM | 1        | Side 90     | 6     |
| 43031  | 8769200424  | TRULY VARIETY CITRUS 12/12 ...  | ABOVE PREMIUM | 2        | Top 90      | 6     |
| 15832  | 81582901006 | CAYMAN JACK MARGARITA 6/1...    | ABOVE PREMIUM | 1        | Front       | 4     |
| 107115 | 7031001647  | SEAGRAMS ESCAPE ITALIAN IC...   | ABOVE PREMIUM | 1        | Side        | 2     |
| 22093  | 8769283103  | TWISTED TEA ORIGINAL 12/12 ...  | ABOVE PREMIUM | 1        | Side        | 2     |
| 6444   | 63598522413 | MIKES HARD STRAWBERRY LE...     | ABOVE PREMIUM | 1        | Front       | 4     |
| 6515   | 63598526001 | MIKES HARD VARIETY PACK 12...   | ABOVE PREMIUM | 1        | Side 90     | 4     |
| 16265  | 8200072385  | SMIRNOFF ICE ORIGINAL 6/11.2... | ABOVE PREMIUM | 1        | Front       | 4     |
| 21823  | 8769200033  | ANGRY ORCHARD CRISP APPL...     | ABOVE PREMIUM | 1        | Front       | 3     |
| 1514   | 1820023997  | STELLA ARTOIS CIDRE 12/12 B...  | ABOVE PREMIUM | 1        | Side        | 2     |
| 17286  | 8382010403  | GUINNESS DRAUGHT STOUT 1...     | ABOVE PREMIUM | 1        | Side        | 2     |
| 61628  | 78615000149 | STELLA ARTOIS 18/11.2 BTL       | ABOVE PREMIUM | 1        | Front       | 3     |

# SHOPRITE\_244

Store # 244

|        |             |                                |               |   |         |    |
|--------|-------------|--------------------------------|---------------|---|---------|----|
| 11384  | 7289010016  | AMSTEL LIGHT 12/12 BTL         | ABOVE PREMIUM | 1 | Side    | 2  |
| 11338  | 7289000152  | HEINEKEN 18/12 BTL             | ABOVE PREMIUM | 1 | Front   | 3  |
| 15429  | 8066095715  | MODELO ESPECIAL 12/12 CAN      | ABOVE PREMIUM | 1 | Side 90 | 4  |
| 15416  | 8066095675  | CORONA LIGHT 12/12 BTL         | ABOVE PREMIUM | 4 | Front   | 12 |
| 21957  | 8769210014  | SAMUEL ADAMS BOSTON LAG...     | ABOVE PREMIUM | 1 | Front   | 3  |
| 21957  | 8769210014  | SAMUEL ADAMS BOSTON LAG...     | ABOVE PREMIUM | 1 | Side    | 2  |
| 10192  | 7199009536  | BLUE MOON SEASONAL 12/12 ...   | ABOVE PREMIUM | 1 | Side    | 2  |
| 63851  | 7199017052  | BLUE MOON BELGIAN WHITE 1...   | ABOVE PREMIUM | 1 | Top     | 6  |
| 10872  | 72383010012 | LAGUNITAS LITTLE SUMPIN 12/... | ABOVE PREMIUM | 1 | Side    | 2  |
| 17200  | 8378322812  | SIERRA NEVADA SEASONAL 12...   | ABOVE PREMIUM | 1 | Side    | 2  |
| 17211  | 8378337512  | SIERRA NEVADA PALE ALE 12/...  | ABOVE PREMIUM | 1 | Side    | 2  |
| 45591  | 63848900189 | DOGFISH HEAD 60 MINUTE IPA...  | ABOVE PREMIUM | 1 | Side 90 | 4  |
| 88312  | 63848900196 | DOGFISH HEAD SEA QUENCH ...    | ABOVE PREMIUM | 1 | Side 90 | 2  |
| 107006 | 73692011926 | GOOSE ISLAND SO-LO IPA 15/1... | ABOVE PREMIUM | 1 | Top     | 3  |
| 51729  | 85689500374 | GOLDEN ROAD WOLF PUP SE...     | ABOVE PREMIUM | 1 | Side 90 | 2  |
| 59698  | 64286090005 | FOUNDERS CENTENNIAL IPA 1...   | ABOVE PREMIUM | 1 | Side 90 | 2  |
| 85112  | 68174500145 | BLUE POINT SEASONAL 18/12 ...  | ABOVE PREMIUM | 1 | Side 90 | 2  |
| 61483  | 3061300074  | BROOKLYN VARIETY PACK 12/1...  | ABOVE PREMIUM | 1 | Top     | 6  |
| 90200  | 7167009298  | SARANAC 100 IPA 12/12 CAN      | ABOVE PREMIUM | 1 | Side 90 | 2  |
| 1376   | 1820015981  | SHOCK TOP BELGIAN WHITE 1...   | ABOVE PREMIUM | 1 | Front   | 3  |
| 69618  | 1820020080  | BUD LIGHT ORANGE 12/12 BTL     | ABOVE PREMIUM | 1 | Front   | 3  |
| 1849   | 1820096715  | MICHELOB ULTRA 24/12 CAN       | ABOVE PREMIUM | 2 | Front   | 6  |

| Name: 5_3 - 1 |             | W:384.00 in                   | D:24.00 in    | Avail Space: 0.83 in | Ht Space: 10.00 in |       |
|---------------|-------------|-------------------------------|---------------|----------------------|--------------------|-------|
| ID            | UPC         | Name                          | Category      | HFacings             | Orientation        | Units |
| 83884         | 63598526087 | WHITE CLAW MANGO 6/12 CAN     | ABOVE PREMIUM | 1                    | Top 90             | 3     |
| 6441          | 63598520025 | WHITE CLAW BLACK CHERRY ...   | ABOVE PREMIUM | 1                    | Top 90             | 3     |
| 63326         | 3410051660  | HENRYS HARD SPARKLING VA...   | ABOVE PREMIUM | 1                    | Top 90             | 3     |
| 106991        | 8200079257  | SMIRNOFF SPIKED SPARKLING...  | ABOVE PREMIUM | 1                    | Top 90             | 3     |
| 45535         | 8200078142  | SMIRNOFF SPIKED SPARKLING...  | ABOVE PREMIUM | 1                    | Top 90             | 3     |
| 104272        | 8769200991  | TRULY LEMONADE VARIETY 12...  | ABOVE PREMIUM | 2                    | Top 90             | 6     |
| 97735         | 4182770112  | ARCTIC SUMMER SPIKED VARI...  | ABOVE PREMIUM | 1                    | Top 90             | 3     |
| 3257          | 3410008722  | REDDS 12/12 BTL               | ABOVE PREMIUM | 1                    | Side               | 2     |
| 107183        | 61300875550 | ARNOLD PALMER SPIKED LEM...   | ABOVE PREMIUM | 1                    | Top 90             | 3     |
| 22076         | 8769275134  | TWISTED TEA HALF AND HALF...  | ABOVE PREMIUM | 1                    | Side 90            | 4     |
| 6402          | 63598506744 | MIKES HARD BLACK CHERRY ...   | ABOVE PREMIUM | 1                    | Front              | 4     |
| 6402          | 63598506744 | MIKES HARD BLACK CHERRY ...   | ABOVE PREMIUM | 1                    | Side               | 3     |
| 16384         | 8200075748  | SMIRNOFF ICE SCREWDRIVER ...  | ABOVE PREMIUM | 1                    | Front              | 4     |
| 89797         | 8769200821  | ANGRY ORCHARD EXPLORER ...    | ABOVE PREMIUM | 1                    | Top 90             | 3     |
| 21843         | 8769200083  | ANGRY ORCHARD CRISP APPL...   | ABOVE PREMIUM | 1                    | Top 90             | 3     |
| 1517          | 1820024001  | STELLA ARTOIS CIDRE 6/12 BTL  | ABOVE PREMIUM | 1                    | Front              | 4     |
| 17299         | 8382012368  | GUINNESS DRAUGHT STOUT 8/...  | ABOVE PREMIUM | 1                    | Side               | 2     |
| 14096         | 78615000016 | STELLA ARTOIS 12/11.2 CAN     | ABOVE PREMIUM | 1                    | Top 90             | 4     |
| 570           | 18195400004 | PERONI 12/11.2 BTL            | ABOVE PREMIUM | 1                    | Side               | 2     |
| 16496         | 8205480751  | WARSTEINER OKTOBERFEST 1...   | ABOVE PREMIUM | 1                    | Side               | 2     |
| 11348         | 7289000188  | HEINEKEN LIGHT 12/12 CAN      | ABOVE PREMIUM | 1                    | Side 90            | 2     |
| 11301         | 7289000020  | HEINEKEN 12/12 CAN            | ABOVE PREMIUM | 1                    | Side 90            | 4     |
| 15449         | 8066095787  | MODELO NEGRA 12/12 BTL        | ABOVE PREMIUM | 1                    | Front              | 2     |
| 15406         | 8066095621  | CORONA LIGHT 12/12 CAN        | ABOVE PREMIUM | 1                    | Top 90             | 3     |
| 15407         | 8066095623  | CORONA LIGHT 18/12 BTL        | ABOVE PREMIUM | 1                    | Front              | 3     |
| 15417         | 8066095680  | CORONA 18/12 BTL              | ABOVE PREMIUM | 1                    | Front              | 3     |
| 85046         | 8769200788  | SAMUEL ADAMS NEW ENGLAN...    | ABOVE PREMIUM | 1                    | Side 90            | 2     |
| 65030         | 8769200497  | SAMUEL ADAMS 76 12/12 CAN     | ABOVE PREMIUM | 1                    | Side 90            | 4     |
| 45526         | 7199017044  | BLUE MOON BELGIAN WHITE 6...  | ABOVE PREMIUM | 1                    | Front              | 4     |
| 99754         | 7199009592  | BLUE MOON LIGHT SKY 12/12 ... | ABOVE PREMIUM | 1                    | Top 90             | 3     |
| 13018         | 75452700066 | NEW BELGIUM VODOO RANG...     | ABOVE PREMIUM | 1                    | Front              | 4     |
| 13068         | 75452700470 | NEW BELGIUM VARIETY PACK ...  | ABOVE PREMIUM | 1                    | Side 90            | 4     |
| 13047         | 75452700362 | NEW BELGIUM VODOO RANG...     | ABOVE PREMIUM | 1                    | Side 90            | 4     |

# SHOPRITE\_244

Store # 244

|        |             |                                |               |   |         |   |
|--------|-------------|--------------------------------|---------------|---|---------|---|
| 17190  | 8378316000  | SIERRA NEVADA 4 WAY IPA VA...  | ABOVE PREMIUM | 1 | Side    | 2 |
| 6748   | 63848900029 | DOGFISH HEAD 60 MINUTE IPA...  | ABOVE PREMIUM | 1 | Front   | 4 |
| 11969  | 73692011180 | GOOSE ISLAND IPA 12/12 BTL     | ABOVE PREMIUM | 1 | Side    | 2 |
| 99516  | 72383021212 | LAGUNITAS IPA 12/12 CAN        | ABOVE PREMIUM | 1 | Side 90 | 2 |
| 48655  | 85961200129 | 21ST AMENDMENT VARIETY PA...   | ABOVE PREMIUM | 1 | Side 90 | 4 |
| 15963  | 81760601028 | CAPTAIN LAWRENCE IPA 12/12 ... | ABOVE PREMIUM | 1 | Front   | 3 |
| 107049 | 81760601029 | CAPTAIN LAWRENCE CITRA DR...   | ABOVE PREMIUM | 1 | Front   | 4 |
| 107050 | 81760601085 | CAPTAIN LAWRENCE CLASSIC ...   | ABOVE PREMIUM | 1 | Front   | 4 |
| 19137  | 85375900031 | SOUTHERN TIER PACK OF PAL...   | ABOVE PREMIUM | 1 | Front   | 3 |
| 138    | 0945001150  | SARANAC IPA 6/12 BTL           | ABOVE PREMIUM | 1 | Front   | 4 |
| 1620   | 1820028156  | SHOCK TOP BELGIAN WHITE 1...   | ABOVE PREMIUM | 1 | Side 90 | 2 |
| 5922   | 6206705155  | LABATT BLUE 12/11.5 BTL        | ABOVE PREMIUM | 1 | Front   | 3 |
| 1428   | 1820018992  | BUD LIGHT PLATINUM 12/12 BTL   | ABOVE PREMIUM | 1 | Front   | 3 |
| 1228   | 1820005990  | MICHELOB ULTRA 12/12 BTL       | ABOVE PREMIUM | 2 | Front   | 6 |

| Name: 5_4 - 1 |             | W:384.00 in                     | D:24.00 in    | Avail Space: 1.50 in | Ht Space: 10.00 in |       |
|---------------|-------------|---------------------------------|---------------|----------------------|--------------------|-------|
| ID            | UPC         | Name                            | Category      | HFacings             | Orientation        | Units |
| 6442          | 63598520028 | WHITE CLAW RUBY GRAPEFR...      | ABOVE PREMIUM | 1                    | Top 90             | 3     |
| 6380          | 63598502598 | WHITE CLAW NATURAL LIME 6/...   | ABOVE PREMIUM | 1                    | Top 90             | 3     |
| 86788         | 3410051681  | CAPE LINE VARIETY PACK 12/1...  | ABOVE PREMIUM | 1                    | Front 90           | 3     |
| 19178         | 85389700227 | BON AND VIV SPIKED SELTZER...   | ABOVE PREMIUM | 2                    | Front 90           | 6     |
| 105038        | 3410001232  | VIZZY VARIETY 12/12 CAN         | ABOVE PREMIUM | 2                    | Front 90           | 6     |
| 86777         | 3354400013  | CORONA REFRESCA VARIETY ...     | ABOVE PREMIUM | 2                    | Front 90           | 6     |
| 1440          | 1820019987  | BUD LIGHT LIME LIME-A-RITA 1... | ABOVE PREMIUM | 1                    | Side 90            | 4     |
| 68928         | 61300875220 | ARNOLD PALMER SPIKED HAL...     | ABOVE PREMIUM | 1                    | Front 90           | 3     |
| 22074         | 8769275102  | TWISTED TEA HALF AND HALF...    | ABOVE PREMIUM | 1                    | Front              | 4     |
| 6398          | 63598506074 | MIKES HARD SEASONAL 6/11.2 ...  | ABOVE PREMIUM | 1                    | Front              | 4     |
| 6398          | 63598506074 | MIKES HARD SEASONAL 6/11.2 ...  | ABOVE PREMIUM | 1                    | Side               | 3     |
| 16283         | 8200072754  | SMIRNOFF ICE RASPBERRY BU...    | ABOVE PREMIUM | 1                    | Front              | 4     |
| 65019         | 8769200660  | ANGRY ORCHARD ROSE 6/12 B...    | ABOVE PREMIUM | 1                    | Front              | 4     |
| 65019         | 8769200660  | ANGRY ORCHARD ROSE 6/12 B...    | ABOVE PREMIUM | 1                    | Side               | 3     |
| 84117         | 89413700268 | CRISPIN VARIETY PACK 12/12 C... | ABOVE PREMIUM | 1                    | Top 90             | 3     |
| 17284         | 8382010401  | GUINNESS DRAUGHT STOUT 6/...    | ABOVE PREMIUM | 1                    | Front              | 4     |
| 14089         | 78615000001 | STELLA ARTOIS 6/11.2 BTL        | ABOVE PREMIUM | 1                    | Front              | 4     |
| 568           | 18195400002 | PERONI 6/11.2 BTL               | ABOVE PREMIUM | 1                    | Front              | 4     |
| 16463         | 8205410454  | WARSTEINER PREMIUM 6/11.2 ...   | ABOVE PREMIUM | 1                    | Front              | 5     |
| 11298         | 7289000011  | HEINEKEN 6/12 BTL               | ABOVE PREMIUM | 1                    | Front              | 4     |
| 10788         | 7231123012  | DOS EQUIS 12/12 BTL             | ABOVE PREMIUM | 1                    | Side               | 2     |
| 10803         | 7231133140  | DOS EQUIS AMBER 12/12 BTL       | ABOVE PREMIUM | 1                    | Side               | 2     |
| 15390         | 8066095315  | PACIFICO 12/12 BTL              | ABOVE PREMIUM | 1                    | Side               | 2     |
| 44952         | 3354495042  | CORONA PREMIER 12/12 BTL        | ABOVE PREMIUM | 1                    | Side               | 2     |
| 44952         | 3354495042  | CORONA PREMIER 12/12 BTL        | ABOVE PREMIUM | 1                    | Front              | 3     |
| 44952         | 3354495042  | CORONA PREMIER 12/12 BTL        | ABOVE PREMIUM | 2                    | Side               | 4     |
| 21956         | 8769210012  | SAMUEL ADAMS BOSTON LAG...      | ABOVE PREMIUM | 1                    | Front              | 4     |
| 21995         | 8769230050  | SAMUEL ADAMS SEASONAL 6/...     | ABOVE PREMIUM | 1                    | Front              | 4     |
| 10180         | 7199009511  | BLUE MOON BELGIAN WHITE 6...    | ABOVE PREMIUM | 1                    | Front              | 4     |
| 99757         | 7199009591  | BLUE MOON LIGHT SKY 6/12 C...   | ABOVE PREMIUM | 1                    | Front              | 5     |
| 13009         | 75452700022 | NEW BELGIUM FAT TIRE 6/12 B...  | ABOVE PREMIUM | 1                    | Front              | 4     |
| 104756        | 75452799992 | NEW BELGIUM MURAL VARIET...     | ABOVE PREMIUM | 1                    | Front              | 4     |
| 17198         | 8378322200  | SIERRA NEVADA PALE ALE 12/...   | ABOVE PREMIUM | 1                    | Side 90            | 4     |
| 46558         | 63848900188 | DOGFISH HEAD SEASONAL C ...     | ABOVE PREMIUM | 1                    | Front              | 4     |
| 104227        | 3410001533  | LEINIES SPRITZEN VARIETY 12/... | ABOVE PREMIUM | 1                    | Top 90             | 3     |
| 11951         | 73692011132 | GOOSE ISLAND IPA 6/12 BTL       | ABOVE PREMIUM | 1                    | Front              | 4     |
| 107008        | 72383010612 | LAGUNITAS HAZY MEMORY 6/1...    | ABOVE PREMIUM | 1                    | Front              | 4     |
| 6158          | 63123440003 | SWEETWATER IPA 6/12 BTL         | ABOVE PREMIUM | 1                    | Front              | 4     |
| 15961         | 81760601020 | CAPTAIN LAWRENCE IPA 6/12 ...   | ABOVE PREMIUM | 1                    | Front              | 4     |
| 75138         | 81760601076 | CAPTAIN LAWRENCE HOP CO...      | ABOVE PREMIUM | 1                    | Side               | 6     |
| 107122        | 3061300051  | BROOKLYN SEASONAL 6/12 CAN      | ABOVE PREMIUM | 1                    | Front              | 8     |

# SHOPRITE\_244

Store # 244

|       |            |                               |               |   |        |   |
|-------|------------|-------------------------------|---------------|---|--------|---|
| 2638  | 3061300053 | BROOKLYN SEASONAL 6/12 BTL    | ABOVE PREMIUM | 1 | Front  | 4 |
| 1345  | 1820013986 | SHOCK TOP BELGIAN WHITE 6/... | ABOVE PREMIUM | 1 | Front  | 4 |
| 89759 | 1820020139 | BUD LIGHT LEMON TEA SEAS...   | ABOVE PREMIUM | 1 | Front  | 3 |
| 1356  | 1820014990 | BUD LIGHT LIME 12/12 BTL      | ABOVE PREMIUM | 1 | Front  | 3 |
| 1121  | 1820000884 | MICHELOB LIGHT 12/12 BTL      | ABOVE PREMIUM | 1 | Front  | 3 |
| 65828 | 1820020083 | MICHELOB ULTRA PURE GOLD...   | ABOVE PREMIUM | 2 | Side   | 4 |
| 1241  | 1820006991 | MICHELOB ULTRA 12/12 CAN      | ABOVE PREMIUM | 1 | Top 90 | 3 |

| Name: 5_5 - 1 |             | W:384.00 in                     | D:24.00 in    | Avail Space: 2.09 in | Ht Space: 9.00 in |       |
|---------------|-------------|---------------------------------|---------------|----------------------|-------------------|-------|
| ID            | UPC         | Name                            | Category      | HFacings             | Orientation       | Units |
| 104752        | 63598500021 | WHITE CLAW 70 PINEAPPLE 6/...   | ABOVE PREMIUM | 1                    | Top 90            | 3     |
| 89569         | 3410051680  | CAPE LINE VARIETY PACK 6/12 ... | ABOVE PREMIUM | 1                    | Top 90            | 3     |
| 79757         | 3410098959  | HENRYS HARD SPARKLING VA...     | ABOVE PREMIUM | 1                    | Top 90            | 3     |
| 89831         | 1820028548  | BON AND VIV SPIKED SELTZER...   | ABOVE PREMIUM | 1                    | Side              | 3     |
| 19179         | 85389700228 | BON AND VIV SPIKED SELTZER...   | ABOVE PREMIUM | 1                    | Top 90            | 3     |
| 86818         | 1820020130  | RITAS SPRITZ VARIETY PACK 1...  | ABOVE PREMIUM | 1                    | Front 90          | 3     |
| 89835         | 85231300483 | PRESS VARIETY 12/12 CAN         | ABOVE PREMIUM | 1                    | Top 90            | 3     |
| 103099        | 2210005002  | PABST HARD COFFEE 4/11 CAN      | ABOVE PREMIUM | 1                    | Front             | 4     |
| 69621         | 3354495063  | CORONA REFRESCA PASSION...      | ABOVE PREMIUM | 1                    | Top 90            | 3     |
| 69622         | 3354495067  | CORONA REFRESCA GUAVA LI...     | ABOVE PREMIUM | 1                    | Top 90            | 3     |
| 107020        | 7031001632  | SEAGRAMS ESCAPE TROPICAL...     | ABOVE PREMIUM | 1                    | Front             | 4     |
| 1464          | 1820020993  | BUD LIGHT LIME STRAW-BER-...    | ABOVE PREMIUM | 1                    | Top 90            | 3     |
| 65020         | 61300874833 | ARNOLD PALMER SPIKED HAL...     | ABOVE PREMIUM | 1                    | Side 90           | 6     |
| 22092         | 8769283102  | TWISTED TEA ORIGINAL 6/12 B...  | ABOVE PREMIUM | 1                    | Front             | 4     |
| 6413          | 63598510062 | MIKES HARD LEMONADE 6/11.2...   | ABOVE PREMIUM | 1                    | Side              | 3     |
| 6413          | 63598510062 | MIKES HARD LEMONADE 6/11.2...   | ABOVE PREMIUM | 1                    | Side              | 3     |
| 6535          | 63598560611 | MIKES HARD CRANBERRY PAS...     | ABOVE PREMIUM | 1                    | Front             | 4     |
| 99509         | 8769200838  | ANGRY ORCHARD UNFILTERE...      | ABOVE PREMIUM | 1                    | Front             | 4     |
| 22090         | 8769282102  | ANGRY ORCHARD CRISP APPL...     | ABOVE PREMIUM | 1                    | Front             | 4     |
| 22457         | 8834510151  | STRONGBOW GOLD 6/11.2 BTL       | ABOVE PREMIUM | 1                    | Front             | 5     |
| 17305         | 8382012393  | GUINNESS EXTRA STOUT 6/12 ...   | ABOVE PREMIUM | 1                    | Front             | 5     |
| 17293         | 8382012360  | GUINNESS DRAUGHT STOUT 4/...    | ABOVE PREMIUM | 1                    | Side              | 4     |
| 16497         | 8205480754  | WARSTEINER OKTOBERFEST 6...     | ABOVE PREMIUM | 1                    | Front             | 5     |
| 10808         | 7231163001  | PILSNER URQUELL 6/11.2 BTL      | ABOVE PREMIUM | 1                    | Front             | 5     |
| 89681         | 7289000621  | HEINEKEN 0.0 NEAR BEER 6/12...  | ABOVE PREMIUM | 1                    | Front             | 4     |
| 17348         | 8382056793  | RED STRIPE LAGER 6/11.2 BTL     | ABOVE PREMIUM | 1                    | Front             | 4     |
| 15442         | 8066095765  | MODELO ESPECIAL 6/12 BTL        | ABOVE PREMIUM | 1                    | Front             | 3     |
| 15408         | 8066095625  | CORONA LIGHT 6/12 BTL           | ABOVE PREMIUM | 1                    | Front             | 4     |
| 15426         | 8066095695  | CORONA 12/12 CAN                | ABOVE PREMIUM | 1                    | Top               | 6     |
| 15400         | 8066095605  | CORONA 6/12 BTL                 | ABOVE PREMIUM | 1                    | Front             | 4     |
| 15393         | 8066095401  | CORONA 6/7 BTL                  | ABOVE PREMIUM | 1                    | Front             | 5     |
| 44964         | 3354495041  | CORONA PREMIER 6/12 BTL         | ABOVE PREMIUM | 1                    | Front             | 4     |
| 44966         | 3354495044  | CORONA PREMIER 12/12 CAN        | ABOVE PREMIUM | 1                    | Front             | 3     |
| 66072         | 8769200673  | SAMUEL ADAMS 76 6/12 CAN        | ABOVE PREMIUM | 1                    | Front             | 8     |
| 62048         | 7199009561  | BLUE MOON MANGO WHEAT 6/...     | ABOVE PREMIUM | 1                    | Front             | 4     |
| 14141         | 78624311990 | FLYING DOG RAGING BITCH 6/...   | ABOVE PREMIUM | 1                    | Front             | 4     |
| 65038         | 75452700885 | NEW BELGIUM VODOO JUICY...      | ABOVE PREMIUM | 1                    | Front             | 8     |
| 13060         | 75452700421 | NEW BELGIUM VODOO RANG...       | ABOVE PREMIUM | 1                    | Front             | 4     |
| 65032         | 8378311010  | SIERRA NEVADA HAZY LITTLE ...   | ABOVE PREMIUM | 1                    | Front             | 8     |
| 61673         | 63848900312 | DOGFISH HEAD 90 MINUTE IMP...   | ABOVE PREMIUM | 1                    | Front             | 4     |
| 3492          | 3410051605  | LEINIES SEASONAL PRIMARY 6...   | ABOVE PREMIUM | 1                    | Front             | 4     |
| 16140         | 81957801006 | TWO ROADS ROAD 2 RUIN 6/12...   | ABOVE PREMIUM | 1                    | Front             | 4     |
| 10845         | 72383000009 | LAGUNITAS IPA 6/12 BTL          | ABOVE PREMIUM | 1                    | Front             | 4     |
| 5177          | 60690500830 | ITHACA FLOWER POWER 6/12 ...    | ABOVE PREMIUM | 1                    | Front             | 4     |
| 52893         | 85155900701 | MILLHOUSE KOLD ONE 4/16 C...    | ABOVE PREMIUM | 1                    | Front             | 4     |
| 52632         | 86326700005 | NEWBURGH MEGA BOSS 4/16 ...     | ABOVE PREMIUM | 1                    | Front             | 4     |
| 90228         | 86036700072 | SLOOP JUICE BOMB IPA 6/12 C...  | ABOVE PREMIUM | 1                    | Front             | 8     |
| 75140         | 81760601081 | CAPTAIN LAWRENCE SEASON...      | ABOVE PREMIUM | 1                    | Side              | 6     |



# SHOPRITE\_244

Store # 244

|        |             |                                |               |   |        |   |
|--------|-------------|--------------------------------|---------------|---|--------|---|
| 92006  | 68174500215 | BLUE POINT THE IPA 6/12 CAN    | ABOVE PREMIUM | 1 | Side   | 6 |
| 19135  | 85375900027 | SOUTHERN TIER 2XIPA 6/12 BTL   | ABOVE PREMIUM | 1 | Front  | 4 |
| 89758  | 1820020140  | BUD LIGHT LEMON TEA SEAS...    | ABOVE PREMIUM | 1 | Front  | 4 |
| 107322 | 1820020209  | BUD LIGHT LEMONADE 12/12 C...  | ABOVE PREMIUM | 1 | Top 90 | 3 |
| 1357   | 1820014991  | BUD LIGHT LIME 6/12 BTL        | ABOVE PREMIUM | 1 | Front  | 4 |
| 104747 | 1820020210  | BUD LIGHT PEELS VARIETY 12/... | ABOVE PREMIUM | 1 | Top 90 | 3 |
| 65024  | 1820020082  | MICHELOB ULTRA PURE GOLD...    | ABOVE PREMIUM | 1 | Front  | 4 |
| 1227   | 1820005989  | MICHELOB ULTRA 6/12 BTL        | ABOVE PREMIUM | 1 | Front  | 4 |
| 86792  | 85777500729 | SAINT ARCHER GOLD 12/12 CAN    | ABOVE PREMIUM | 1 | Top 90 | 3 |

| Name: 12_6 |            | W:240.00 in                 | D:31.00 in | Avail Space: 3.21 in | Ht Space: 11.00 in |       |
|------------|------------|-----------------------------|------------|----------------------|--------------------|-------|
| ID         | UPC        | Name                        | Category   | HFacings             | Orientation        | Units |
| 23915      | 8992441003 | YUENGLING LAGER 24/12 BTL   | PREMIUM    | 1                    | Side               | 2     |
| 10234      | 7199010020 | COORS BANQUET 18/12 CAN     | PREMIUM    | 1                    | Side 90            | 8     |
| 10352      | 7199030078 | COORS LIGHT 18/12 BTL       | PREMIUM    | 1                    | Front              | 8     |
| 10329      | 7199030017 | COORS LIGHT 18/12 CAN       | PREMIUM    | 2                    | Side 90            | 12    |
| 10380      | 7199031600 | COORS LIGHT 24/12 CAN       | PREMIUM    | 2                    | Side 90            | 14    |
| 3532       | 3410057256 | LITE 18/12 BTL              | PREMIUM    | 1                    | Side               | 4     |
| 3541       | 3410057306 | LITE 24/12 CAN              | PREMIUM    | 1                    | Side 90            | 4     |
| 1664       | 1820053168 | BUD LIGHT 24/12 CAN         | PREMIUM    | 1                    | Side 90            | 4     |
| 1670       | 1820053308 | BUD LIGHT 18/12 BTL         | PREMIUM    | 1                    | Front              | 8     |
| 1672       | 1820053349 | BUD LIGHT 24/12 BTL (HG)    | PREMIUM    | 1                    | Side               | 4     |
| 1672       | 1820053349 | BUD LIGHT 24/12 BTL (HG)    | PREMIUM    | 1                    | Side               | 4     |
| 1310       | 1820011308 | BUD 18/12 BTL               | PREMIUM    | 1                    | Side               | 4     |
| 1307       | 1820011218 | BUD 18/12 CAN               | PREMIUM    | 1                    | Top                | 12    |
| 1312       | 1820011349 | BUD 24/12 BTL (HG)          | PREMIUM    | 2                    | Side               | 8     |
| 2326       | 2210011219 | PABST 30/12 CAN             | ECONOMY    | 1                    | Side               | 4     |
| 3193       | 3410001341 | HIGH LIFE 30/12 CAN         | ECONOMY    | 1                    | Side               | 2     |
| 45405      | 7199048045 | KEYSTONE LIGHT 15/12 CAN    | ECONOMY    | 1                    | Top                | 8     |
| 13892      | 7825000382 | STEEL RESERVE 211 12/12 CAN | ECONOMY    | 1                    | Side 90            | 4     |
| 61975      | 1820020077 | NATURAL LIGHT 15/12 CAN     | ECONOMY    | 1                    | Side 90            | 4     |
| 66288      | 1820028443 | NATURAL ICE 15/12 CAN       | ECONOMY    | 1                    | Side 90            | 4     |
| 92510      | 1820020133 | NATURDAYS 12/12 CAN         | ECONOMY    | 1                    | Side 90            | 4     |

| Name: 12_8 |             | W:240.00 in                   | D:22.00 in    | Avail Space: 1.68 in | Ht Space: 11.00 in |       |
|------------|-------------|-------------------------------|---------------|----------------------|--------------------|-------|
| ID         | UPC         | Name                          | Category      | HFacings             | Orientation        | Units |
| 107121     | 8992477013  | YUENGLING FLIGHT 12/12 BTL    | PREMIUM       | 1                    | Front              | 2     |
| 23909      | 8992429386  | YUENGLING BLACK AND TAN 1...  | PREMIUM       | 1                    | Front              | 2     |
| 23909      | 8992429386  | YUENGLING BLACK AND TAN 1...  | PREMIUM       | 1                    | Side               | 2     |
| 10353      | 7199030079  | COORS LIGHT 24/12 BTL (HG)    | PREMIUM       | 2                    | Front              | 4     |
| 3531       | 3410057243  | LITE 24/12 BTL (HG)           | PREMIUM       | 1                    | Front              | 2     |
| 3565       | 3410057509  | LITE 12/12 BTL                | PREMIUM       | 1                    | Side               | 2     |
| 1664       | 1820053168  | BUD LIGHT 24/12 CAN           | PREMIUM       | 2                    | Top                | 8     |
| 1667       | 1820053218  | BUD LIGHT 18/12 CAN           | PREMIUM       | 2                    | Side 90            | 4     |
| 1304       | 1820011168  | BUD 24/12 CAN                 | PREMIUM       | 1                    | Top                | 4     |
| 1304       | 1820011168  | BUD 24/12 CAN                 | PREMIUM       | 1                    | Side 90            | 2     |
| 68563      | 1820020068  | BUDWEISER RESERVE SEASO...    | PREMIUM       | 1                    | Side               | 2     |
| 1071       | 1820000801  | BUSCH LIGHT 12/12 CAN         | ECONOMY       | 1                    | Side 90            | 4     |
| 3202       | 3410001636  | HIGH LIFE 12/12 CAN           | ECONOMY       | 1                    | Side 90            | 4     |
| 3198       | 3410001509  | HIGH LIFE 12/12 BTL           | ECONOMY       | 1                    | Side               | 2     |
| 58705      | 63848900306 | DOGFISH HEAD 60 MINUTE IPA... | ABOVE PREMIUM | 2                    | Front              | 16    |
| 89768      | 75452701021 | NEW BELGIUM VODOO RANG...     | ABOVE PREMIUM | 1                    | Front              | 8     |
| 43248      | 64286013024 | FOUNDERS ALL DAY SESSION ...  | ABOVE PREMIUM | 2                    | Front              | 16    |
| 89609      | 72383001192 | LAGUNITAS IPA 1/19.2 CAN      | ABOVE PREMIUM | 2                    | Front              | 16    |
| 10346      | 7199030065  | COORS LIGHT 1/24 CAN          | PREMIUM       | 2                    | Front              | 14    |
| 10243      | 7199010071  | COORS BANQUET 1/24 CAN        | PREMIUM       | 3                    | Front              | 21    |
| 1521       | 1820025001  | BUD LIGHT 1/25 CAN            | PREMIUM       | 2                    | Front              | 14    |
| 2761       | 3410000005  | HIGH LIFE 1/24 CAN            | ECONOMY       | 2                    | Front              | 14    |

# SHOPRITE\_244

Store # 244

|      |            |                      |         |   |       |    |
|------|------------|----------------------|---------|---|-------|----|
| 1528 | 1820025008 | NATURAL ICE 1/25 CAN | ECONOMY | 3 | Front | 21 |
|------|------------|----------------------|---------|---|-------|----|

| Name: 12_9 |             | W:240.00 in                    | D:22.00 in    | Avail Space: 1.50 in | Ht Space: 10.00 in |       |
|------------|-------------|--------------------------------|---------------|----------------------|--------------------|-------|
| ID         | UPC         | Name                           | Category      | HFacings             | Orientation        | Units |
| 23902      | 8992427896  | YUENGLING LAGER 12/12 BTL      | PREMIUM       | 1                    | Front              | 3     |
| 23902      | 8992427896  | YUENGLING LAGER 12/12 BTL      | PREMIUM       | 1                    | Side               | 2     |
| 68457      | 8992433125  | YUENGLING GOLDEN PILSNER ...   | PREMIUM       | 1                    | Side               | 2     |
| 105972     | 1820020202  | BUDWEISER NITRO GOLD 6/12 ...  | PREMIUM       | 1                    | Front              | 8     |
| 10471      | 7199076400  | KILLIANS IRISH RED 12/12 BTL   | ABOVE PREMIUM | 1                    | Side               | 2     |
| 10348      | 7199030069  | COORS LIGHT 12/12 BTL          | PREMIUM       | 2                    | Front              | 4     |
| 10367      | 7199030104  | COORS LIGHT 9/16 BTL (AL)      | PREMIUM       | 1                    | Front              | 2     |
| 3552       | 3410057340  | LITE 18/12 CAN                 | PREMIUM       | 1                    | Top                | 4     |
| 3305       | 3410015509  | MILLER 64 12/12 BTL            | PREMIUM       | 1                    | Side               | 2     |
| 1056       | 1820000769  | BUD LIGHT 12/12 BTL            | PREMIUM       | 2                    | Side               | 4     |
| 1667       | 1820053218  | BUD LIGHT 18/12 CAN            | PREMIUM       | 3                    | Side 90            | 6     |
| 1297       | 1820011047  | BUD 12/12 CAN                  | PREMIUM       | 1                    | Top                | 4     |
| 1058       | 1820000771  | BUD 12/12 BTL                  | PREMIUM       | 1                    | Side               | 2     |
| 1058       | 1820000771  | BUD 12/12 BTL                  | PREMIUM       | 1                    | Side               | 2     |
| 1684       | 1820061047  | BUSCH 12/12 CAN                | ECONOMY       | 1                    | Side 90            | 4     |
| 9886       | 7143934450  | ROLLING ROCK 12/12 CAN         | ECONOMY       | 1                    | Side 90            | 4     |
| 9905       | 7143945712  | ROLLING ROCK 12/12 BTL         | ECONOMY       | 1                    | Front              | 2     |
| 2763       | 3410000007  | HIGH LIFE 6/16 CAN             | ECONOMY       | 1                    | Side               | 2     |
| 22099      | 8769283231  | TWISTED TEA ORIGINAL 1/24 C... | ABOVE PREMIUM | 2                    | Front              | 14    |
| 22077      | 8769275231  | TWISTED TEA HALF AND HALF...   | ABOVE PREMIUM | 2                    | Front              | 14    |
| 66064      | 61300874829 | ARNOLD PALMER SPIKED HAL...    | ABOVE PREMIUM | 2                    | Front              | 14    |
| 98777      | 61300875404 | ARNOLD PALMER SPIKED ICE...    | ABOVE PREMIUM | 2                    | Front              | 14    |
| 98779      | 61300875407 | ARNOLD PALMER SPIKED LEM...    | ABOVE PREMIUM | 2                    | Front              | 14    |
| 6462       | 63598524583 | MIKES HARDER LEMONADE 1/...    | ABOVE PREMIUM | 3                    | Front              | 21    |
| 6470       | 63598524985 | MIKES HARDER CRANBERRY L...    | ABOVE PREMIUM | 2                    | Front              | 14    |
| 6435       | 63598513215 | MIKES HARDER BLACKCHERR...     | ABOVE PREMIUM | 2                    | Front              | 14    |
| 56771      | 7031001483  | SEAGRAMS ESCAPES SPIKED ...    | ABOVE PREMIUM | 2                    | Front              | 14    |

| Name: 12_10 |            | W:240.00 in                   | D:22.00 in    | Avail Space: 2.10 in | Ht Space: 15.00 in |       |
|-------------|------------|-------------------------------|---------------|----------------------|--------------------|-------|
| ID          | UPC        | Name                          | Category      | HFacings             | Orientation        | Units |
| 23900       | 8992427891 | YUENGLING LAGER 6/12 BTL      | PREMIUM       | 1                    | Front              | 4     |
| 23903       | 8992427898 | YUENGLING LAGER 12/12 CAN     | PREMIUM       | 1                    | Side 90            | 4     |
| 69239       | 8992433567 | YUENGLING GOLDEN PILSNER ...  | PREMIUM       | 1                    | Front              | 4     |
| 73080       | 8992433481 | YUENGLING GOLDEN PILSNER ...  | PREMIUM       | 1                    | Side 90            | 4     |
| 10452       | 7199070002 | KILLIANS IRISH RED 6/12 BTL   | ABOVE PREMIUM | 1                    | Front              | 4     |
| 10155       | 7199000008 | COORS LIGHT 6/12 CAN          | PREMIUM       | 1                    | Front              | 8     |
| 10322       | 7199030005 | COORS LIGHT 6/12 BTL          | PREMIUM       | 1                    | Front              | 4     |
| 107283      | 7199070028 | COORS LIGHT 12/12 CAN (SLE... | PREMIUM       | 2                    | Top 90             | 6     |
| 3514        | 3410057023 | LITE 9/16 BTL (AL)            | PREMIUM       | 1                    | Front              | 2     |
| 3564        | 3410057505 | LITE 6/12 BTL                 | PREMIUM       | 1                    | Front              | 4     |
| 3579        | 3410057636 | LITE 12/12 CAN                | PREMIUM       | 1                    | Side 90            | 4     |
| 651         | 1820000106 | BUD LIGHT 6/12 CAN            | PREMIUM       | 1                    | Front              | 8     |
| 1083        | 1820000833 | BUD LIGHT 6/12 BTL            | PREMIUM       | 1                    | Front              | 4     |
| 1469        | 1820020998 | BUD LIGHT 8/16 BTL (AL)       | PREMIUM       | 1                    | Side               | 2     |
| 1659        | 1820053047 | BUD LIGHT 12/12 CAN           | PREMIUM       | 2                    | Side 90            | 8     |
| 1084        | 1820000834 | BUD 6/12 BTL                  | PREMIUM       | 1                    | Front              | 4     |
| 587         | 1820000016 | BUD 6/12 CAN                  | PREMIUM       | 1                    | Side               | 4     |
| 2241        | 2210000170 | PABST 12/12 CAN               | ECONOMY       | 1                    | Side 90            | 4     |
| 624         | 1820000063 | BUSCH 6/16 CAN                | ECONOMY       | 1                    | Front              | 4     |
| 3197        | 3410001505 | HIGH LIFE 6/12 BTL            | ECONOMY       | 1                    | Front              | 4     |
| 11307       | 7289000030 | BUCKLER NEAR BEER 6/12 BTL    | ABOVE PREMIUM | 1                    | Front              | 3     |
| 16707       | 8248812700 | BECKS NEAR BEER 6/12 BTL      | NA BEER       | 1                    | Front              | 4     |
| 1065        | 1820000784 | ODOULS NEAR BEER 6/12 BTL     | NA BEER       | 1                    | Front              | 4     |
| 1705        | 1820079047 | ODOULS NEAR BEER 12/12 CAN    | NA BEER       | 1                    | Side 90            | 4     |

# SHOPRITE\_244

Store # 244

|       |             |                             |               |   |       |    |
|-------|-------------|-----------------------------|---------------|---|-------|----|
| 10478 | 7199077005  | COORS EDGE NA 6/12 BTL      | NA BEER       | 1 | Front | 4  |
| 9452  | 7089701331  | FOSTERS 1/25.4 CAN          | ABOVE PREMIUM | 3 | Front | 18 |
| 9488  | 7089718331  | FOSTERS PREMIUM 1/25.4 CAN  | ABOVE PREMIUM | 2 | Front | 12 |
| 11327 | 7289000119  | HEINEKEN 1/24 CAN           | ABOVE PREMIUM | 2 | Front | 14 |
| 15415 | 8066095643  | CORONA 1/24 CAN             | ABOVE PREMIUM | 2 | Front | 14 |
| 63674 | 63598526038 | WHITE CLAW BLACK CHERRY ... | ABOVE PREMIUM | 2 | Front | 16 |
| 97015 | 63598526039 | WHITE CLAW MANGO 1/19.2 CAN | ABOVE PREMIUM | 2 | Front | 16 |

| Name: 12_7 |            | W:48.00 in                 | D:22.00 in    | Avail Space: 2.32 in | Ht Space: 11.00 in |       |
|------------|------------|----------------------------|---------------|----------------------|--------------------|-------|
| ID         | UPC        | Name                       | Category      | HFacings             | Orientation        | Units |
| 8973       | 7031000150 | GENESEE CREAM ALE 1/24 CAN | ECONOMY       | 2                    | Front              | 14    |
| 75033      | 7031001532 | GENESEE BLACK 1/24 CAN     | ABOVE PREMIUM | 2                    | Front              | 14    |
| 10436      | 7199048024 | KEYSTONE LIGHT 1/24 CAN    | ECONOMY       | 2                    | Front              | 14    |
| 10412      | 7199047712 | KEYSTONE ICE 1/24 CAN      | ECONOMY       | 2                    | Front              | 14    |
| 13877      | 7825000328 | STEEL RESERVE 211 1/24 CAN | ECONOMY       | 2                    | Front              | 14    |
| 1522       | 1820025002 | NATURAL LIGHT 1/25 CAN     | ECONOMY       | 2                    | Front              | 14    |
| 1533       | 1820025013 | NATTY DADDY 1/25 CAN       | ECONOMY       | 4                    | Front              | 28    |

Shop Rite Assortment Worksheet

Name: 244\_56ft\_OPEN\_COLD





# SHOPRITE\_244

Cooler Size: WAKEFERN FOOD CORP/HQ



4 ft 4 ft

## Store # 244

Address: 1643 ROUTE 82

LAGRANGEVILLE , NY

|              |             |                 |         |         |                  |
|--------------|-------------|-----------------|---------|---------|------------------|
| SHOPRITE_244 | Store # 244 | H: 5 ft 4.00 in | W: 8 ft | D: 2 ft | # of segments: 2 |
|--------------|-------------|-----------------|---------|---------|------------------|

| Name: 1_1 |             | W:96.00 in                     | D:24.00 in    | Avail Space: 11.45 in |             | Ht Space: 11.00 in |  |
|-----------|-------------|--------------------------------|---------------|-----------------------|-------------|--------------------|--|
| ID        | UPC         | Name                           | Category      | HFacings              | Orientation | Units              |  |
| 5199      | 60875200501 | RIVER HORSE HOP HAZARD 1/...   | ABOVE PREMIUM | 2                     | Front       | 18                 |  |
| 6558      | 63625177012 | STONE IPA 1/12 BTL             | ABOVE PREMIUM | 1                     | Front       | 10                 |  |
| 2427      | 2486662092  | FULL SAIL SEASONAL 1/12 BTL    | ABOVE PREMIUM | 2                     | Front       | 18                 |  |
| 17177     | 8378300008  | SIERRA NEVADA TORPEDO IPA ...  | ABOVE PREMIUM | 2                     | Front       | 18                 |  |
| 17174     | 8378300005  | SIERRA NEVADA PALE ALE 1/12... | ABOVE PREMIUM | 2                     | Front       | 18                 |  |
| 6         | 0015000002  | SIERRA NEVADA SEASONAL 1/1...  | ABOVE PREMIUM | 2                     | Front       | 18                 |  |
| 17180     | 8378300012  | SIERRA NEVADA HOP HUNTER ...   | ABOVE PREMIUM | 2                     | Front       | 18                 |  |
| 10856     | 72383000021 | LAGUNITAS LITTLE SUMPIN 1/1... | ABOVE PREMIUM | 2                     | Front       | 18                 |  |
| 10846     | 72383000010 | LAGUNITAS IPA 1/12 BTL         | ABOVE PREMIUM | 2                     | Front       | 18                 |  |
| 10848     | 72383000012 | LAGUNITAS PILSNER 1/12 BTL     | ABOVE PREMIUM | 1                     | Front       | 9                  |  |
| 10850     | 72383000015 | LAGUNITAS SEASONAL 1/12 BTL    | ABOVE PREMIUM | 1                     | Front       | 9                  |  |
| 4935      | 60275500601 | FIRESTONE UNION JACK 1/12 B... | ABOVE PREMIUM | 1                     | Front       | 9                  |  |
| 4952      | 60275500700 | FIRESTONE EASY JACK 1/12 BTL   | ABOVE PREMIUM | 1                     | Front       | 9                  |  |
| 21237     | 85961200100 | 21ST AMENDMENT HELL OR HI...   | ABOVE PREMIUM | 1                     | Front       | 18                 |  |
| 21238     | 85961200101 | 21ST AMENDMENT BREW FREE...    | ABOVE PREMIUM | 1                     | Front       | 18                 |  |
| 1108      | 1820000867  | SHOCK TOP BELGIAN WHITE 1/...  | ABOVE PREMIUM | 1                     | Front       | 9                  |  |
| 1869      | 1820096908  | SHOCK TOP TWISTED PRETZEL...   | ABOVE PREMIUM | 1                     | Front       | 9                  |  |
| 24248     | 9200000240  | NOT YOUR FATHERS ROOT BE...    | ABOVE PREMIUM | 1                     | Front       | 9                  |  |
| 24253     | 9200000244  | NOT YOUR FATHERS GINGER A...   | ABOVE PREMIUM | 1                     | Front       | 9                  |  |
| 91758     | 7031001541  | PURA STILL BLACKBERRY 1/12 ... | ABOVE PREMIUM | 1                     | Front       | 9                  |  |
| 45485     | 3410000397  | HENRY'S HARD GRAPE 1/12 BTL    | ABOVE PREMIUM | 1                     | Front       | 9                  |  |
| 3122      | 3410000795  | HENRY'S HARD ORANGE 1/12 B...  | ABOVE PREMIUM | 1                     | Front       | 9                  |  |
| 1591      | 1820025801  | BEST DAMN ROOT BEER 1/12 B...  | ABOVE PREMIUM | 1                     | Front       | 9                  |  |
| 58065     | 1820025817  | BEST DAMN CHERRY COLA 1/1...   | ABOVE PREMIUM | 1                     | Front       | 9                  |  |
| 12317     | 73929500700 | ORIGINAL SIN HARD CIDER 1/1... | ABOVE PREMIUM | 2                     | Front       | 20                 |  |

| Name: 1_2 |              | W:96.00 in                     | D:24.00 in    | Avail Space: 12.54 in |             | Ht Space: 11.00 in |  |
|-----------|--------------|--------------------------------|---------------|-----------------------|-------------|--------------------|--|
| ID        | UPC          | Name                           | Category      | HFacings              | Orientation | Units              |  |
| 11213     | 72783000005  | ANCHOR STEAM BEER 1/12 BTL     | ABOVE PREMIUM | 1                     | Front       | 9                  |  |
| 11950     | 73692011131  | GOOSE ISLAND IPA 1/12 BTL      | ABOVE PREMIUM | 2                     | Front       | 18                 |  |
| 12054     | 73692011501  | GOOSE ISLAND FOUR STAR PIL...  | ABOVE PREMIUM | 2                     | Front       | 18                 |  |
| 3106      | 3410000774   | LEINIES SEASONAL PRIMARY 1/... | ABOVE PREMIUM | 2                     | Front       | 18                 |  |
| 2915      | 3410000274   | LEINIES SEASONAL SECONDAR...   | ABOVE PREMIUM | 2                     | Front       | 18                 |  |
| 12355     | 74052210061  | BELLS SEASONAL 1/12 BTL (B)    | ABOVE PREMIUM | 2                     | Front       | 18                 |  |
| 12361     | 74052210081  | BELLS TWO HEARTED ALE 1/12...  | ABOVE PREMIUM | 2                     | Front       | 18                 |  |
| 12344     | 74052210021  | BELLS AMBER ALE 1/12 BTL       | ABOVE PREMIUM | 1                     | Front       | 9                  |  |
| 16204     | 81994200011S | OSKAR BLUES MAMAS LITTLE Y...  | ABOVE PREMIUM | 2                     | Front       | 36                 |  |
| 16193     | 81994200003S | OSKAR BLUES DALES 1/12 CAN     | ABOVE PREMIUM | 1                     | Front       | 18                 |  |
| 16218     | 81994200332S | OSKAR BLUES ONE Y 1/12 CAN     | ABOVE PREMIUM | 1                     | Front       | 9                  |  |
| 14701     | 79386653001  | LEFT HAND MILK STOUT NITRO...  | ABOVE PREMIUM | 1                     | Front       | 9                  |  |
| 70594     | 7199009560   | BLUE MOON MANGO WHEAT 1/...    | ABOVE PREMIUM | 2                     | Front       | 18                 |  |
| 22197     | 8780000073   | BLUE MOON BELGIAN WHITE 1/...  | ABOVE PREMIUM | 2                     | Front       | 18                 |  |
| 10189     | 7199009531   | BLUE MOON SEASONAL 1/12 BTL    | ABOVE PREMIUM | 2                     | Front       | 18                 |  |
| 13008     | 75452700021  | NEW BELGIUM FAT TIRE 1/12 B... | ABOVE PREMIUM | 2                     | Front       | 20                 |  |
| 13061     | 75452700422  | NEW BELGIUM VODOO RANG...      | ABOVE PREMIUM | 2                     | Front       | 20                 |  |
| 13014     | 75452700047  | NEW BELGIUM VODOO RANG...      | ABOVE PREMIUM | 2                     | Front       | 20                 |  |
| 13081     | 75452700607  | NEW BELGIUM GLUTINY PALE A...  | ABOVE PREMIUM | 1                     | Front       | 9                  |  |
| 1041      | 1820000729   | REDBRIDGE 1/12 BTL             | ABOVE PREMIUM | 1                     | Front       | 9                  |  |
| 1926      | 18260800003  | BARDS TALE BEER DRAGONS G...   | ABOVE PREMIUM | 1                     | Front       | 10                 |  |

| Name: 1_3 |     | W:96.00 in | D:24.00 in | Avail Space: 12.93 in |             | Ht Space: 11.00 in |  |
|-----------|-----|------------|------------|-----------------------|-------------|--------------------|--|
| ID        | UPC | Name       | Category   | HFacings              | Orientation | Units              |  |

# SHOPRITE\_244

Store # 244

Cooler Size: WAKEFERN FOOD CORP/HQ

Address: 1643 ROUTE 82

LAGRANGEVILLE , NY



|       |              |                                |               |   |       |    |
|-------|--------------|--------------------------------|---------------|---|-------|----|
| 135   | 0945000009   | SARANAC SEASONS BEST 1/12 ...  | ABOVE PREMIUM | 1 | Front | 9  |
| 10021 | 7167000005   | SARANAC LEGACY IPA 1/12 BTL    | ABOVE PREMIUM | 1 | Front | 9  |
| 68303 | 86021800021S | SMART BEER ORGANIC GOLDE...    | ABOVE PREMIUM | 1 | Front | 9  |
| 29246 | 85721700209  | ADIRONDACK BEAVER TAIL BR...   | ABOVE PREMIUM | 1 | Front | 9  |
| 92398 | 86547400000  | YONKERS VIENNA LAGER 1/12 ...  | ABOVE PREMIUM | 1 | Front | 9  |
| 69524 | 86326700001S | NEWBURGH BROWN SESSION ...     | ABOVE PREMIUM | 1 | Front | 9  |
| 85647 | 86326700000S | NEWBURGH CREAM ALE 1/16 C...   | ABOVE PREMIUM | 1 | Front | 9  |
| 21060 | 85909300205  | SIXPOINT BENGALI IPA 1/16 CAN  | ABOVE PREMIUM | 1 | Front | 9  |
| 21063 | 85909300208  | SIXPOINT THE CRISP 1/16 CAN    | ABOVE PREMIUM | 1 | Front | 9  |
| 21062 | 85909300207  | SIXPOINT SWEET ACTION 1/16 ... | ABOVE PREMIUM | 1 | Front | 9  |
| 68304 | 69685912934S | KELSO NUT BROWN LAGER 1/1...   | ABOVE PREMIUM | 2 | Front | 18 |
| 92399 | 85663600100S | BUTTERNUTS PORKSLAP PALE ...   | ABOVE PREMIUM | 2 | Front | 18 |
| 92400 | 85663600101S | BUTTERNUTS HEINNIWEISSE ...    | ABOVE PREMIUM | 2 | Front | 18 |
| 6672  | 63770400081  | TROEGS HOP BACK 1/12 BTL       | ABOVE PREMIUM | 1 | Front | 9  |
| 6022  | 63027946701  | VICTORY HOP DEVIL 1/12 BTL     | ABOVE PREMIUM | 1 | Front | 10 |
| 7014  | 64286030007  | FOUNDERS DIRTY BASTARD SC...   | ABOVE PREMIUM | 1 | Front | 9  |
| 7039  | 64286070024  | FOUNDERS ALL DAY SESSION I...  | ABOVE PREMIUM | 2 | Front | 18 |
| 14142 | 78624311991  | FLYING DOG RAGING BITCH 1/1... | ABOVE PREMIUM | 1 | Front | 9  |
| 14124 | 78624311102  | FLYING DOG DOGGIE STYLE 1/1... | ABOVE PREMIUM | 1 | Front | 10 |
| 6758  | 63848900055  | DOGFISH HEAD 60 MINUTE IPA ... | ABOVE PREMIUM | 1 | Front | 9  |
| 6793  | 63848900136  | DOGFISH HEAD NAMASTE 1/12 ...  | ABOVE PREMIUM | 1 | Front | 9  |
| 61828 | 63848900113  | DOGFISH HEAD SEASONAL 1/12...  | ABOVE PREMIUM | 1 | Front | 9  |
| 6148  | 63123420003  | SWEETWATER IPA 1/12 BTL        | ABOVE PREMIUM | 1 | Front | 9  |
| 6151  | 63123430001  | SWEETWATER 420 1/12 BTL        | ABOVE PREMIUM | 1 | Front | 10 |
| 15172 | 80020000005  | ABITA PURPLE HAZE 1/12 BTL     | ABOVE PREMIUM | 1 | Front | 9  |
| 15171 | 80020000004  | ABITA SEERSUCKER SUMMER ...    | ABOVE PREMIUM | 1 | Front | 9  |
| 22533 | 8857333100   | SHINER BOCK 1/12 BTL           | ABOVE PREMIUM | 1 | Front | 9  |
| 22520 | 8857300074   | SHINER SEASONAL A 1/12 BTL     | ABOVE PREMIUM | 2 | Front | 18 |

| Name: 1_4 |             | W:96.00 in                     | D:24.00 in    | Avail Space: 10.08 in |             | Ht Space: 11.00 in |
|-----------|-------------|--------------------------------|---------------|-----------------------|-------------|--------------------|
| ID        | UPC         | Name                           | Category      | HFacings              | Orientation | Units              |
| 5174      | 60690500520 | ITHACA APRICOT WHEAT 1/12 ...  | ABOVE PREMIUM | 1                     | Front       | 9                  |
| 29958     | 89968800030 | KEEGAN MOTHERS MILK 1/12 B...  | ABOVE PREMIUM | 1                     | Front       | 9                  |
| 29957     | 89968800020 | KEEGAN HURRICANE KITTY 1/1...  | ABOVE PREMIUM | 1                     | Front       | 9                  |
| 28003     | 81760601019 | CAPTAIN LAWRENCE IPA 1/12 B... | ABOVE PREMIUM | 2                     | Front       | 18                 |
| 15959     | 81760601004 | CAPTAIN LAWRENCE FRESHCH...    | ABOVE PREMIUM | 2                     | Front       | 18                 |
| 28001     | 81760601015 | CAPTAIN LAWRENCE PUMPKIN ...   | ABOVE PREMIUM | 1                     | Front       | 9                  |
| 27998     | 81760601005 | CAPTAIN LAWRENCE LIQUID G...   | ABOVE PREMIUM | 2                     | Front       | 18                 |
| 2637      | 30613000050 | BROOKLYN SEASONAL 1/12 BTL     | ABOVE PREMIUM | 1                     | Front       | 9                  |
| 2612      | 3020000613  | BROOKLYN LAGER 1/12 BTL        | ABOVE PREMIUM | 2                     | Front       | 18                 |
| 2619      | 30613000007 | BROOKLYN EAST IPA 1/12 BTL     | ABOVE PREMIUM | 1                     | Front       | 9                  |
| 2620      | 30613000008 | BROOKLYN CHOCOLATE STOUT...    | ABOVE PREMIUM | 1                     | Front       | 9                  |
| 19149     | 85375900065 | SOUTHERN TIER 2XIPA 1/12 BTL   | ABOVE PREMIUM | 2                     | Front       | 20                 |
| 19123     | 85375900011 | SOUTHERN TIER IPA 1/12 BTL     | ABOVE PREMIUM | 1                     | Front       | 10                 |
| 19133     | 85375900025 | SOUTHERN TIER SEASONAL 1/...   | ABOVE PREMIUM | 1                     | Front       | 10                 |
| 7901      | 68174511111 | BLUE POINT TOASTED LAGER 1...  | ABOVE PREMIUM | 2                     | Front       | 18                 |
| 7915      | 68174512252 | BLUE POINT MOSAIC SESSION I... | ABOVE PREMIUM | 1                     | Front       | 4                  |
| 7899      | 68174511101 | BLUE POINT HOPTICAL ILLUSIO... | ABOVE PREMIUM | 1                     | Front       | 9                  |
| 15882     | 81624600520 | BLUCREEK BLUEBERRY ALE 1/...   | ABOVE PREMIUM | 2                     | Front       | 18                 |
| 7909      | 68174511119 | BLUE POINT SEASONAL 1/12 BTL   | ABOVE PREMIUM | 2                     | Front       | 18                 |
| 48881     | 88715100194 | CONEY ISLAND OVERPASS IPA ...  | ABOVE PREMIUM | 2                     | Front       | 18                 |
| 46014     | 88715100096 | CONEY ISLAND MERMAID PILSN...  | ABOVE PREMIUM | 2                     | Front       | 18                 |
| 29752     | 88715100101 | CONEY ISLAND THE PLUNGE 1/...  | ABOVE PREMIUM | 1                     | Front       | 9                  |
| 7180      | 64944000015 | OMMEGANG WITTE 1/12 BTL        | ABOVE PREMIUM | 1                     | Front       | 9                  |
| 7223      | 64944099817 | OMMEGANG NIRVANA IPA 1/12 ...  | ABOVE PREMIUM | 1                     | Front       | 9                  |

| Name: 1_5 |     | W:96.00 in | D:24.00 in | Avail Space: 13.19 in |             | Ht Space: 15.00 in |
|-----------|-----|------------|------------|-----------------------|-------------|--------------------|
| ID        | UPC | Name       | Category   | HFacings              | Orientation | Units              |



Cooler Size: WAKEFERN FOOD CORP/HQ

Address: 1643 ROUTE 82

LAGRANGEVILLE , NY



|       |             |                                |               |   |       |    |
|-------|-------------|--------------------------------|---------------|---|-------|----|
| 28113 | 81957801001 | TWO ROADS ROAD 2 RUIN 1/12...  | ABOVE PREMIUM | 1 | Front | 9  |
| 28112 | 81957801000 | TWO ROADS OL FACTORY 1/12 ...  | ABOVE PREMIUM | 1 | Front | 9  |
| 21902 | 8769200268  | SAMUEL ADAMS REBEL ROUSE...    | ABOVE PREMIUM | 1 | Front | 9  |
| 21859 | 8769200126  | SAMUEL ADAMS REBEL IPA 1/1...  | ABOVE PREMIUM | 1 | Front | 9  |
| 21925 | 8769200342  | SAMUEL ADAMS REBEL GRAPE...    | ABOVE PREMIUM | 1 | Front | 9  |
| 21809 | 8769200005  | SAMUEL ADAMS BOSTON LAGE...    | ABOVE PREMIUM | 2 | Front | 20 |
| 21997 | 8769230053  | SAMUEL ADAMS SEASONAL 1/1...   | ABOVE PREMIUM | 2 | Front | 18 |
| 21807 | 8769200003  | SAMUEL ADAMS PORCH ROCKE...    | ABOVE PREMIUM | 2 | Front | 20 |
| 21983 | 8769227100  | SAMUEL ADAMS CHERRY WHE...     | ABOVE PREMIUM | 1 | Front | 9  |
| 22056 | 8769259100  | SAMUEL ADAMS LATITUDE 48 I...  | ABOVE PREMIUM | 2 | Front | 18 |
| 4142  | 4182700007  | HARPOON IPA 1/12 BTL           | ABOVE PREMIUM | 2 | Front | 18 |
| 25844 | 4182700014  | HARPOON SEASONAL 1/12 BTL      | ABOVE PREMIUM | 2 | Front | 18 |
| 4202  | 4182790003  | HARPOON UFO WHITE 1/12 BTL     | ABOVE PREMIUM | 1 | Front | 9  |
| 4203  | 4182790004  | HARPOON UFO SEASONAL 1/12...   | ABOVE PREMIUM | 1 | Front | 9  |
| 10102 | 71925600027 | LONG TRAIL AMBER ALE 1/12 B... | ABOVE PREMIUM | 1 | Front | 9  |
| 10119 | 71925600078 | LONG TRAIL IPA 1/12 BTL        | ABOVE PREMIUM | 1 | Front | 9  |
| 10123 | 71925600100 | LONG TRAIL HIBERNATOR 1/12 ... | ABOVE PREMIUM | 1 | Front | 9  |
| 15018 | 79837300006 | MAGIC HAT SEASONAL 1/12 BTL    | ABOVE PREMIUM | 1 | Front | 9  |
| 15017 | 79837300002 | MAGIC HAT 9 NOT QUITE PALE ... | ABOVE PREMIUM | 1 | Front | 9  |
| 14809 | 79556310009 | SMUTTYNOSE FINESTKIND IPA ...  | ABOVE PREMIUM | 2 | Front | 18 |
| 27719 | 79556310024 | SMUTTYNOSE HAYSEED 1/12 B...   | ABOVE PREMIUM | 1 | Front | 9  |
| 4981  | 60367510187 | ALLAGASH WHITE 1/12 BTL        | ABOVE PREMIUM | 2 | Front | 18 |
| 5006  | 60367512887 | ALLAGASH SAISON 1/12 BTL       | ABOVE PREMIUM | 1 | Front | 9  |
| 27557 | 78036921212 | SHIPYARD MONKEY FIST IPA 1/... | ABOVE PREMIUM | 1 | Front | 9  |
| 13769 | 78036980006 | SHIPYARD SEASONAL 1/12 BTL     | ABOVE PREMIUM | 2 | Front | 20 |



# SHOPRITE\_244

Store # 244

|              |             |                 |         |         |                  |
|--------------|-------------|-----------------|---------|---------|------------------|
| SHOPRITE_244 | Store # 244 | H: 5 ft 4.00 in | W: 8 ft | D: 2 ft | # of segments: 2 |
|--------------|-------------|-----------------|---------|---------|------------------|

| Name: 1_1 |             | W:96.00 in                     | D:24.00 in    | Avail Space: 11.45 in | Ht Space: 11.00 in |       |
|-----------|-------------|--------------------------------|---------------|-----------------------|--------------------|-------|
| ID        | UPC         | Name                           | Category      | HFacings              | Orientation        | Units |
| 5199      | 60875200501 | RIVER HORSE HOP HAZARD 1/...   | ABOVE PREMIUM | 2                     | Front              | 18    |
| 6558      | 63625177012 | STONE IPA 1/12 BTL             | ABOVE PREMIUM | 1                     | Front              | 10    |
| 2427      | 2486662092  | FULL SAIL SEASONAL 1/12 BTL    | ABOVE PREMIUM | 2                     | Front              | 18    |
| 17177     | 83783000008 | SIERRA NEVADA TORPEDO IPA...   | ABOVE PREMIUM | 2                     | Front              | 18    |
| 17174     | 83783000005 | SIERRA NEVADA PALE ALE 1/1...  | ABOVE PREMIUM | 2                     | Front              | 18    |
| 6         | 00150000002 | SIERRA NEVADA SEASONAL 1/...   | ABOVE PREMIUM | 2                     | Front              | 18    |
| 17180     | 83783000012 | SIERRA NEVADA HOP HUNTER...    | ABOVE PREMIUM | 2                     | Front              | 18    |
| 10856     | 72383000021 | LAGUNITAS LITTLE SUMPIN 1/1... | ABOVE PREMIUM | 2                     | Front              | 18    |
| 10846     | 72383000010 | LAGUNITAS IPA 1/12 BTL         | ABOVE PREMIUM | 2                     | Front              | 18    |
| 10848     | 72383000012 | LAGUNITAS PILSNER 1/12 BTL     | ABOVE PREMIUM | 1                     | Front              | 9     |
| 10850     | 72383000015 | LAGUNITAS SEASONAL 1/12 BTL    | ABOVE PREMIUM | 1                     | Front              | 9     |
| 4935      | 60275500601 | FIRESTONE UNION JACK 1/12 B... | ABOVE PREMIUM | 1                     | Front              | 9     |
| 4952      | 60275500700 | FIRESTONE EASY JACK 1/12 BTL   | ABOVE PREMIUM | 1                     | Front              | 9     |
| 21237     | 85961200100 | 21ST AMENDMENT HELL OR HI...   | ABOVE PREMIUM | 1                     | Front              | 18    |
| 21238     | 85961200101 | 21ST AMENDMENT BREW FRE...     | ABOVE PREMIUM | 1                     | Front              | 18    |
| 1108      | 1820000867  | SHOCK TOP BELGIAN WHITE 1/...  | ABOVE PREMIUM | 1                     | Front              | 9     |
| 1869      | 1820096908  | SHOCK TOP TWISTED PRETZE...    | ABOVE PREMIUM | 1                     | Front              | 9     |
| 24248     | 9200000240  | NOT YOUR FATHERS ROOT BE...    | ABOVE PREMIUM | 1                     | Front              | 9     |
| 24253     | 9200000244  | NOT YOUR FATHERS GINGER ...    | ABOVE PREMIUM | 1                     | Front              | 9     |
| 91758     | 7031001541  | PURA STILL BLACKBERRY 1/12...  | ABOVE PREMIUM | 1                     | Front              | 9     |
| 45485     | 3410000397  | HENRYS HARD GRAPE 1/12 BTL     | ABOVE PREMIUM | 1                     | Front              | 9     |
| 3122      | 3410000795  | HENRYS HARD ORANGE 1/12 B...   | ABOVE PREMIUM | 1                     | Front              | 9     |
| 1591      | 1820025801  | BEST DAMN ROOT BEER 1/12 ...   | ABOVE PREMIUM | 1                     | Front              | 9     |
| 58065     | 1820025817  | BEST DAMN CHERRY COLA 1/1...   | ABOVE PREMIUM | 1                     | Front              | 9     |
| 12317     | 73929500700 | ORIGINAL SIN HARD CIDER 1/1... | ABOVE PREMIUM | 2                     | Front              | 20    |

| Name: 1_2 |              | W:96.00 in                     | D:24.00 in    | Avail Space: 12.54 in | Ht Space: 11.00 in |       |
|-----------|--------------|--------------------------------|---------------|-----------------------|--------------------|-------|
| ID        | UPC          | Name                           | Category      | HFacings              | Orientation        | Units |
| 11213     | 72783000005  | ANCHOR STEAM BEER 1/12 BTL     | ABOVE PREMIUM | 1                     | Front              | 9     |
| 11950     | 73692011131  | GOOSE ISLAND IPA 1/12 BTL      | ABOVE PREMIUM | 2                     | Front              | 18    |
| 12054     | 73692011501  | GOOSE ISLAND FOUR STAR PI...   | ABOVE PREMIUM | 2                     | Front              | 18    |
| 3106      | 3410000774   | LEINIES SEASONAL PRIMARY 1...  | ABOVE PREMIUM | 2                     | Front              | 18    |
| 2915      | 3410000274   | LEINIES SEASONAL SECONDA...    | ABOVE PREMIUM | 2                     | Front              | 18    |
| 12355     | 74052210061  | BELLS SEASONAL 1/12 BTL (B)    | ABOVE PREMIUM | 2                     | Front              | 18    |
| 12361     | 74052210081  | BELLS TWO HEARTED ALE 1/1...   | ABOVE PREMIUM | 2                     | Front              | 18    |
| 12344     | 74052210021  | BELLS AMBER ALE 1/12 BTL       | ABOVE PREMIUM | 1                     | Front              | 9     |
| 16204     | 81994200011S | OSKAR BLUES MAMAS LITTLE ...   | ABOVE PREMIUM | 2                     | Front              | 36    |
| 16193     | 81994200003S | OSKAR BLUES DALES 1/12 CAN     | ABOVE PREMIUM | 1                     | Front              | 18    |
| 16218     | 81994200332S | OSKAR BLUES ONE Y 1/12 CAN     | ABOVE PREMIUM | 1                     | Front              | 9     |
| 14701     | 79386653001  | LEFT HAND MILK STOUT NITR...   | ABOVE PREMIUM | 1                     | Front              | 9     |
| 70594     | 7199009560   | BLUE MOON MANGO WHEAT 1/...    | ABOVE PREMIUM | 2                     | Front              | 18    |
| 22197     | 8780000073   | BLUE MOON BELGIAN WHITE 1...   | ABOVE PREMIUM | 2                     | Front              | 18    |
| 10189     | 7199009531   | BLUE MOON SEASONAL 1/12 B...   | ABOVE PREMIUM | 2                     | Front              | 18    |
| 13008     | 75452700021  | NEW BELGIUM FAT TIRE 1/12 B... | ABOVE PREMIUM | 2                     | Front              | 20    |
| 13061     | 75452700422  | NEW BELGIUM VODOO RANG...      | ABOVE PREMIUM | 2                     | Front              | 20    |
| 13014     | 75452700047  | NEW BELGIUM VODOO RANG...      | ABOVE PREMIUM | 2                     | Front              | 20    |
| 13081     | 75452700607  | NEW BELGIUM GLUTINY PALE ...   | ABOVE PREMIUM | 1                     | Front              | 9     |
| 1041      | 1820000729   | REDBRIDGE 1/12 BTL             | ABOVE PREMIUM | 1                     | Front              | 9     |
| 1926      | 18260800003  | BARDS TALE BEER DRAGONS ...    | ABOVE PREMIUM | 1                     | Front              | 10    |

| Name: 1_3 |             | W:96.00 in                   | D:24.00 in    | Avail Space: 12.93 in | Ht Space: 11.00 in |       |
|-----------|-------------|------------------------------|---------------|-----------------------|--------------------|-------|
| ID        | UPC         | Name                         | Category      | HFacings              | Orientation        | Units |
| 135       | 09450000009 | SARANAC SEASONS BEST 1/12... | ABOVE PREMIUM | 1                     | Front              | 9     |

# SHOPRITE\_244

Store # 244

|       |              |                                |               |   |       |    |
|-------|--------------|--------------------------------|---------------|---|-------|----|
| 10021 | 7167000005   | SARANAC LEGACY IPA 1/12 BTL    | ABOVE PREMIUM | 1 | Front | 9  |
| 68303 | 86021800021S | SMART BEER ORGANIC GOLD...     | ABOVE PREMIUM | 1 | Front | 9  |
| 29246 | 85721700209  | ADIRONDACK BEAVER TAIL BR...   | ABOVE PREMIUM | 1 | Front | 9  |
| 92398 | 86547400000  | YONKERS VIENNA LAGER 1/12 ...  | ABOVE PREMIUM | 1 | Front | 9  |
| 69524 | 86326700001S | NEWBURGH BROWN SESSION ...     | ABOVE PREMIUM | 1 | Front | 9  |
| 85647 | 86326700000S | NEWBURGH CREAM ALE 1/16 ...    | ABOVE PREMIUM | 1 | Front | 9  |
| 21060 | 85909300205  | SIXPOINT BENGALI IPA 1/16 CAN  | ABOVE PREMIUM | 1 | Front | 9  |
| 21063 | 85909300208  | SIXPOINT THE CRISP 1/16 CAN    | ABOVE PREMIUM | 1 | Front | 9  |
| 21062 | 85909300207  | SIXPOINT SWEET ACTION 1/16 ... | ABOVE PREMIUM | 1 | Front | 9  |
| 68304 | 69685912934S | KELSO NUT BROWN LAGER 1/1...   | ABOVE PREMIUM | 2 | Front | 18 |
| 92399 | 85663600100S | BUTTERNUTS PORKSLAP PALE...    | ABOVE PREMIUM | 2 | Front | 18 |
| 92400 | 85663600101S | BUTTERNUTS HEINNIEWEISSE ...   | ABOVE PREMIUM | 2 | Front | 18 |
| 6672  | 63770400081  | TROEGS HOP BACK 1/12 BTL       | ABOVE PREMIUM | 1 | Front | 9  |
| 6022  | 63027946701  | VICTORY HOP DEVIL 1/12 BTL     | ABOVE PREMIUM | 1 | Front | 10 |
| 7014  | 64286030007  | FOUNDERS DIRTY BASTARD S...    | ABOVE PREMIUM | 1 | Front | 9  |
| 7039  | 64286070024  | FOUNDERS ALL DAY SESSION ...   | ABOVE PREMIUM | 2 | Front | 18 |
| 14142 | 78624311991  | FLYING DOG RAGING BITCH 1/...  | ABOVE PREMIUM | 1 | Front | 9  |
| 14124 | 78624311102  | FLYING DOG DOGGIE STYLE 1/...  | ABOVE PREMIUM | 1 | Front | 10 |
| 6758  | 63848900055  | DOGFISH HEAD 60 MINUTE IPA...  | ABOVE PREMIUM | 1 | Front | 9  |
| 6793  | 63848900136  | DOGFISH HEAD NAMASTE 1/12...   | ABOVE PREMIUM | 1 | Front | 9  |
| 61828 | 63848900113  | DOGFISH HEAD SEASONAL 1/1...   | ABOVE PREMIUM | 1 | Front | 9  |
| 6148  | 63123420003  | SWEETWATER IPA 1/12 BTL        | ABOVE PREMIUM | 1 | Front | 9  |
| 6151  | 63123430001  | SWEETWATER 420 1/12 BTL        | ABOVE PREMIUM | 1 | Front | 10 |
| 15172 | 80020000005  | ABITA PURPLE HAZE 1/12 BTL     | ABOVE PREMIUM | 1 | Front | 9  |
| 15171 | 80020000004  | ABITA SEERSUCKER SUMMER ...    | ABOVE PREMIUM | 1 | Front | 9  |
| 22533 | 8857333100   | SHINER BOCK 1/12 BTL           | ABOVE PREMIUM | 1 | Front | 9  |
| 22520 | 8857300074   | SHINER SEASONAL A 1/12 BTL     | ABOVE PREMIUM | 2 | Front | 18 |

| Name: 1_4 |             | W:96.00 in                    | D:24.00 in    | Avail Space: 10.08 in | Ht Space: 11.00 in |       |
|-----------|-------------|-------------------------------|---------------|-----------------------|--------------------|-------|
| ID        | UPC         | Name                          | Category      | HFacings              | Orientation        | Units |
| 5174      | 60690500520 | ITHACA APRICOT WHEAT 1/12 ... | ABOVE PREMIUM | 1                     | Front              | 9     |
| 29958     | 89968800030 | KEEGAN MOTHERS MILK 1/12 ...  | ABOVE PREMIUM | 1                     | Front              | 9     |
| 29957     | 89968800020 | KEEGAN HURRICANE KITTY 1/1... | ABOVE PREMIUM | 1                     | Front              | 9     |
| 28003     | 81760601019 | CAPTAIN LAWRENCE IPA 1/12 ... | ABOVE PREMIUM | 2                     | Front              | 18    |
| 15959     | 81760601004 | CAPTAIN LAWRENCE FRESHC...    | ABOVE PREMIUM | 2                     | Front              | 18    |
| 28001     | 81760601015 | CAPTAIN LAWRENCE PUMPKIN...   | ABOVE PREMIUM | 1                     | Front              | 9     |
| 27998     | 81760601005 | CAPTAIN LAWRENCE LIQUID G...  | ABOVE PREMIUM | 2                     | Front              | 18    |
| 2637      | 3061300050  | BROOKLYN SEASONAL 1/12 BTL    | ABOVE PREMIUM | 1                     | Front              | 9     |
| 2612      | 3020000613  | BROOKLYN LAGER 1/12 BTL       | ABOVE PREMIUM | 2                     | Front              | 18    |
| 2619      | 3061300007  | BROOKLYN EAST IPA 1/12 BTL    | ABOVE PREMIUM | 1                     | Front              | 9     |
| 2620      | 3061300008  | BROOKLYN CHOCOLATE STOU...    | ABOVE PREMIUM | 1                     | Front              | 9     |
| 19149     | 85375900065 | SOUTHERN TIER 2XIPA 1/12 BTL  | ABOVE PREMIUM | 2                     | Front              | 20    |
| 19123     | 85375900011 | SOUTHERN TIER IPA 1/12 BTL    | ABOVE PREMIUM | 1                     | Front              | 10    |
| 19133     | 85375900025 | SOUTHERN TIER SEASONAL 1/...  | ABOVE PREMIUM | 1                     | Front              | 10    |
| 7901      | 68174511111 | BLUE POINT TOASTED LAGER ...  | ABOVE PREMIUM | 2                     | Front              | 18    |
| 7915      | 68174512252 | BLUE POINT MOSAIC SESSION ... | ABOVE PREMIUM | 1                     | Front              | 4     |
| 7899      | 68174511101 | BLUE POINT HOPTICAL ILLUSI... | ABOVE PREMIUM | 1                     | Front              | 9     |
| 15882     | 81624600520 | BLUCREEK BLUEBERRY ALE 1/...  | ABOVE PREMIUM | 2                     | Front              | 18    |
| 7909      | 68174511119 | BLUE POINT SEASONAL 1/12 B... | ABOVE PREMIUM | 2                     | Front              | 18    |
| 48881     | 88715100194 | CONEY ISLAND OVERPASS IPA...  | ABOVE PREMIUM | 2                     | Front              | 18    |
| 46014     | 88715100096 | CONEY ISLAND MERMAID PILS...  | ABOVE PREMIUM | 2                     | Front              | 18    |
| 29752     | 88715100101 | CONEY ISLAND THE PLUNGE 1...  | ABOVE PREMIUM | 1                     | Front              | 9     |
| 7180      | 64944000015 | OMMEGANG WITTE 1/12 BTL       | ABOVE PREMIUM | 1                     | Front              | 9     |
| 7223      | 64944099817 | OMMEGANG NIRVANA IPA 1/12 ... | ABOVE PREMIUM | 1                     | Front              | 9     |

| Name: 1_5 |             | W:96.00 in                    | D:24.00 in    | Avail Space: 13.19 in | Ht Space: 15.00 in |       |
|-----------|-------------|-------------------------------|---------------|-----------------------|--------------------|-------|
| ID        | UPC         | Name                          | Category      | HFacings              | Orientation        | Units |
| 28113     | 81957801001 | TWO ROADS ROAD 2 RUIN 1/12... | ABOVE PREMIUM | 1                     | Front              | 9     |

# SHOPRITE\_244

## Store # 244

|       |             |                                |               |   |       |    |
|-------|-------------|--------------------------------|---------------|---|-------|----|
| 28112 | 81957801000 | TWO ROADS OL FACTORY 1/12...   | ABOVE PREMIUM | 1 | Front | 9  |
| 21902 | 8769200268  | SAMUEL ADAMS REBEL ROUS...     | ABOVE PREMIUM | 1 | Front | 9  |
| 21859 | 8769200126  | SAMUEL ADAMS REBEL IPA 1/1...  | ABOVE PREMIUM | 1 | Front | 9  |
| 21925 | 8769200342  | SAMUEL ADAMS REBEL GRAP...     | ABOVE PREMIUM | 1 | Front | 9  |
| 21809 | 8769200005  | SAMUEL ADAMS BOSTON LAG...     | ABOVE PREMIUM | 2 | Front | 20 |
| 21997 | 8769230053  | SAMUEL ADAMS SEASONAL 1/...    | ABOVE PREMIUM | 2 | Front | 18 |
| 21807 | 8769200003  | SAMUEL ADAMS PORCH ROCK...     | ABOVE PREMIUM | 2 | Front | 20 |
| 21983 | 8769227100  | SAMUEL ADAMS CHERRY WHE...     | ABOVE PREMIUM | 1 | Front | 9  |
| 22056 | 8769259100  | SAMUEL ADAMS LATITUDE 48 I...  | ABOVE PREMIUM | 2 | Front | 18 |
| 4142  | 4182700007  | HARPOON IPA 1/12 BTL           | ABOVE PREMIUM | 2 | Front | 18 |
| 25844 | 4182700014  | HARPOON SEASONAL 1/12 BTL      | ABOVE PREMIUM | 2 | Front | 18 |
| 4202  | 4182790003  | HARPOON UFO WHITE 1/12 BTL     | ABOVE PREMIUM | 1 | Front | 9  |
| 4203  | 4182790004  | HARPOON UFO SEASONAL 1/1...    | ABOVE PREMIUM | 1 | Front | 9  |
| 10102 | 71925600027 | LONG TRAIL AMBER ALE 1/12 ...  | ABOVE PREMIUM | 1 | Front | 9  |
| 10119 | 71925600078 | LONG TRAIL IPA 1/12 BTL        | ABOVE PREMIUM | 1 | Front | 9  |
| 10123 | 71925600100 | LONG TRAIL HIBERNATOR 1/12...  | ABOVE PREMIUM | 1 | Front | 9  |
| 15018 | 79837300006 | MAGIC HAT SEASONAL 1/12 BTL    | ABOVE PREMIUM | 1 | Front | 9  |
| 15017 | 79837300002 | MAGIC HAT 9 NOT QUITE PALE ... | ABOVE PREMIUM | 1 | Front | 9  |
| 14809 | 79556310009 | SMUTTYNOSE FINESTKIND IPA ...  | ABOVE PREMIUM | 2 | Front | 18 |
| 27719 | 79556310024 | SMUTTYNOSE HAYSEED 1/12 B...   | ABOVE PREMIUM | 1 | Front | 9  |
| 4981  | 60367510187 | ALLAGASH WHITE 1/12 BTL        | ABOVE PREMIUM | 2 | Front | 18 |
| 5006  | 60367512887 | ALLAGASH SAISON 1/12 BTL       | ABOVE PREMIUM | 1 | Front | 9  |
| 27557 | 78036921212 | SHIPYARD MONKEY FIST IPA 1/... | ABOVE PREMIUM | 1 | Front | 9  |
| 13769 | 78036980006 | SHIPYARD SEASONAL 1/12 BTL     | ABOVE PREMIUM | 2 | Front | 20 |

Shop Rite Assortment Worksheet

Name: 244\_8ft\_OPEN\_WARM