

CALL CENTER/KEEPER/FOOD/CORONA



SHOPRITE_241

Cooler Size: WAKEFERN FOOD CORP/HQ



Store # 241

Address: 801 MIRON LN

KINGSTON, NY

| | | | | | |
|--------------|-------------|------------------|----------|---------|-------------------|
| SHOPRITE_241 | Store # 241 | H: 4 ft 10.00 in | W: 44 ft | D: 2 ft | # of segments: 11 |
|--------------|-------------|------------------|----------|---------|-------------------|

| Name: 1_1 | | W:528.00 in | D:30.00 in | Avail Space: 2.89 in | | Ht Space: 11.00 in |
|-----------|-------------|--------------------------------|---------------|----------------------|-------------|--------------------|
| ID | UPC | Name | Category | HFacings | Orientation | Units |
| 45151 | 63598554890 | WHITE CLAW VARIETY PACK 12... | ABOVE PREMIUM | 2 | Side | 18 |
| 106595 | 63598580006 | WHITE CLAW VARIETY PACK 12... | ABOVE PREMIUM | 1 | Side | 9 |
| 65035 | 8769200686 | TRULY VARIETY BERRY 12/12 C... | ABOVE PREMIUM | 1 | Side | 9 |
| 87955 | 8769200804 | TRULY VARIETY TROPICAL 12/1... | ABOVE PREMIUM | 1 | Side | 9 |
| 105977 | 1820020208 | BUD LIGHT SELTZER VARIETY ... | ABOVE PREMIUM | 1 | Side | 9 |
| 105038 | 3410001232 | VIZZY VARIETY 12/12 CAN | ABOVE PREMIUM | 1 | Side | 9 |
| 104728 | 3354400043 | CORONA SELTZER VARIETY 12/ ... | ABOVE PREMIUM | 1 | Top 90 | 8 |
| 15329 | 8043280290 | SEAGRAMS ESCAPES VARIETY ... | ABOVE PREMIUM | 1 | Side | 6 |
| 6414 | 63598512001 | MIKES HARD LEMONADE 12/11... | ABOVE PREMIUM | 1 | Side | 6 |
| 6433 | 63598512998 | MIKES HARD VARIETY PACK 12/... | ABOVE PREMIUM | 1 | Side | 6 |
| 21815 | 8769200017 | ANGRY ORCHARD EXPLORER P... | ABOVE PREMIUM | 1 | Side | 6 |
| 21823 | 8769200033 | ANGRY ORCHARD CRISP APPLE... | ABOVE PREMIUM | 1 | Side | 6 |
| 1514 | 1820023997 | STELLA ARTOIS CIDRE 12/12 BTL | ABOVE PREMIUM | 1 | Side | 4 |

| Name: 6_7 | | W:528.00 in | D:22.00 in | Avail Space: 1.78 in | | Ht Space: 11.00 in |
|-----------|-------------|--------------------------------|---------------|----------------------|-------------|--------------------|
| ID | UPC | Name | Category | HFacings | Orientation | Units |
| 83125 | 63598526089 | WHITE CLAW BLACK CHERRY 1... | ABOVE PREMIUM | 2 | Top 90 | 6 |
| 104272 | 8769200991 | TRULY LEMONADE VARIETY 12... | ABOVE PREMIUM | 2 | Top 90 | 6 |
| 43031 | 8769200424 | TRULY VARIETY CITRUS 12/12 ... | ABOVE PREMIUM | 1 | Top 90 | 3 |
| 45535 | 8200078142 | SMIRNOFF SPIKED SPARKLING ... | ABOVE PREMIUM | 1 | Top 90 | 3 |
| 89835 | 85231300483 | PRESS VARIETY 12/12 CAN | ABOVE PREMIUM | 1 | Top 90 | 3 |
| 86777 | 3354400013 | CORONA REFRESCA VARIETY 1... | ABOVE PREMIUM | 1 | Top 90 | 3 |
| 107115 | 7031001647 | SEAGRAMS ESCAPE ITALIAN IC... | ABOVE PREMIUM | 1 | Side | 2 |
| 6515 | 63598526001 | MIKES HARD VARIETY PACK 12/... | ABOVE PREMIUM | 1 | Side 90 | 4 |
| 65025 | 63598526042 | MIKES HARDER VARIETY PACK ... | ABOVE PREMIUM | 1 | Side 90 | 4 |
| 85041 | 8769200754 | ANGRY ORCHARD ROSE 12/12 ... | ABOVE PREMIUM | 1 | Top 90 | 3 |
| 99509 | 8769200838 | ANGRY ORCHARD UNFILTERED... | ABOVE PREMIUM | 1 | Front | 4 |
| 17286 | 8382010403 | GUINNESS DRAUGHT STOUT 1... | ABOVE PREMIUM | 1 | Side | 2 |

| Name: 6_8 | | W:528.00 in | D:22.00 in | Avail Space: 2.35 in | | Ht Space: 11.00 in |
|-----------|-------------|---------------------------------|---------------|----------------------|-------------|--------------------|
| ID | UPC | Name | Category | HFacings | Orientation | Units |
| 93496 | 63598510033 | WHITE CLAW MANGO 12/12 CAN | ABOVE PREMIUM | 1 | Top 90 | 3 |
| 73277 | 3354495076 | SVEDKA SPARKLING SELTZER ... | ABOVE PREMIUM | 1 | Top 90 | 3 |
| 97735 | 4182770112 | ARCTIC SUMMER SPIKED VARIE... | ABOVE PREMIUM | 1 | Front 90 | 3 |
| 86788 | 3410051681 | CAPE LINE VARIETY PACK 12/12... | ABOVE PREMIUM | 1 | Front 90 | 3 |
| 86818 | 1820020130 | RITAS SPRITZ VARIETY PACK 1... | ABOVE PREMIUM | 1 | Top 90 | 3 |
| 106991 | 8200079257 | SMIRNOFF SPIKED SPARKLING ... | ABOVE PREMIUM | 1 | Top 90 | 3 |
| 19178 | 85389700227 | BON AND VIV SPIKED SELTZER ... | ABOVE PREMIUM | 1 | Top 90 | 3 |
| 6535 | 63598560611 | MIKES HARD CRANBERRY PAS... | ABOVE PREMIUM | 1 | Front | 4 |
| 6398 | 63598506074 | MIKES HARD SEASONAL 6/11.2 ... | ABOVE PREMIUM | 1 | Front | 4 |
| 6391 | 63598506064 | MIKES HARD BLACK RASPBERR... | ABOVE PREMIUM | 1 | Front | 4 |
| 22096 | 8769283134 | TWISTED TEA ORIGINAL 12/12 ... | ABOVE PREMIUM | 1 | Top 90 | 2 |
| 22076 | 8769275134 | TWISTED TEA HALF AND HALF ... | ABOVE PREMIUM | 1 | Top 90 | 2 |
| 68928 | 61300875220 | ARNOLD PALMER SPIKED HALF ... | ABOVE PREMIUM | 1 | Front 90 | 3 |
| 22090 | 8769282102 | ANGRY ORCHARD CRISP APPLE... | ABOVE PREMIUM | 1 | Front | 4 |
| 17305 | 8382012393 | GUINNESS EXTRA STOUT 6/12 ... | ABOVE PREMIUM | 1 | Front | 4 |

| Name: 6_9 | | W:528.00 in | D:22.00 in | Avail Space: 1.97 in | | Ht Space: 11.00 in |
|-----------|-------------|--------------------------------|---------------|----------------------|-------------|--------------------|
| ID | UPC | Name | Category | HFacings | Orientation | Units |
| 6441 | 63598520025 | WHITE CLAW BLACK CHERRY 6... | ABOVE PREMIUM | 1 | Top 90 | 3 |
| 104752 | 63598500021 | WHITE CLAW 70 PINEAPPLE 6/1... | ABOVE PREMIUM | 1 | Top 90 | 3 |
| 83884 | 63598526087 | WHITE CLAW MANGO 6/12 CAN | ABOVE PREMIUM | 1 | Top 90 | 3 |

SHOPRITE_241

Store # 241

Cooler Size: WAKEFERN FOOD CORP/HQ

Address: 801 MIRON LN

KINGSTON , NY

| | | | | | | |
|--------|-------------|--------------------------------|---------------|---|--------|---|
| 68882 | 8769200678 | TRULY WILD BERRY 6/12 CAN | ABOVE PREMIUM | 1 | Top 90 | 3 |
| 104273 | 8769200989 | TRULY WATERMELON KIWI 6/1... | ABOVE PREMIUM | 1 | Side | 3 |
| 63326 | 3410051660 | HENRY'S HARD SPARKLING VA... | ABOVE PREMIUM | 1 | Top 90 | 3 |
| 79757 | 3410098959 | HENRY'S HARD SPARKLING VA... | ABOVE PREMIUM | 1 | Top 90 | 3 |
| 89831 | 1820028548 | BON AND VIV SPIKED SELTZER ... | ABOVE PREMIUM | 1 | Top 90 | 3 |
| 15832 | 81582901006 | CAYMAN JACK MARGARITA 6/ 11... | ABOVE PREMIUM | 1 | Front | 4 |
| 6444 | 63598522413 | MIKES HARD STRAWBERRY LE... | ABOVE PREMIUM | 1 | Front | 4 |
| 6413 | 63598510062 | MIKES HARD LEMONADE 6/ 11.2... | ABOVE PREMIUM | 1 | Front | 4 |
| 6402 | 63598506744 | MIKES HARD BLACK CHERRY L... | ABOVE PREMIUM | 1 | Front | 4 |
| 6402 | 63598506744 | MIKES HARD BLACK CHERRY L... | ABOVE PREMIUM | 1 | Side | 2 |
| 103099 | 2210005002 | PABST HARD COFFEE 4/ 11 CAN | ABOVE PREMIUM | 1 | Front | 4 |
| 107183 | 61300875550 | ARNOLD PALMER SPIKED LEMO... | ABOVE PREMIUM | 1 | Top 90 | 3 |
| 65019 | 8769200660 | ANGRY ORCHARD ROSE 6/ 12 B... | ABOVE PREMIUM | 1 | Front | 4 |



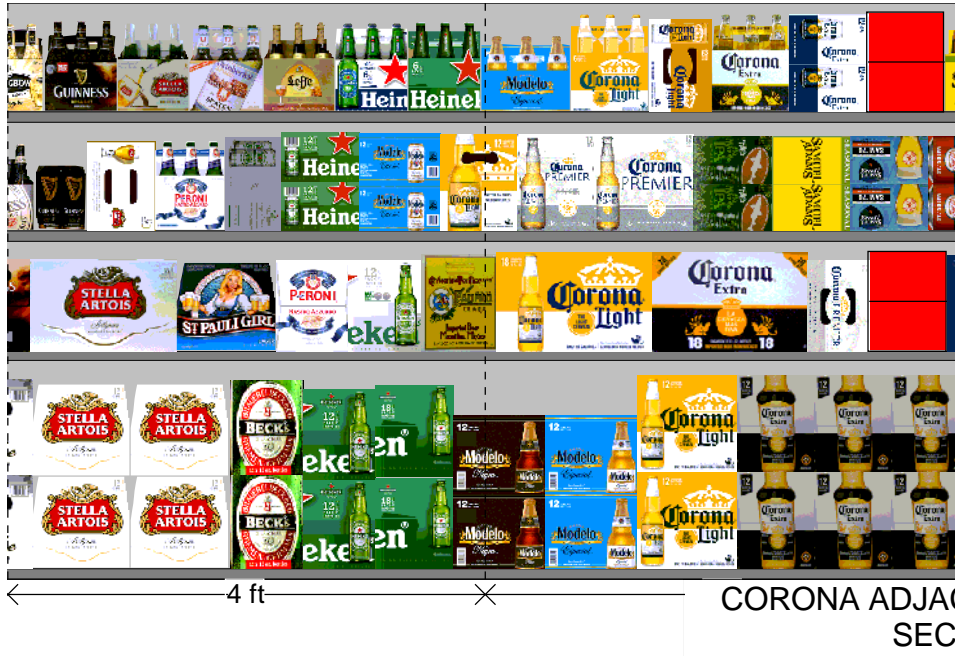
SHOPRITE_241

Store # 241

Cooler Size: WAKEFERN FOOD CORP/HQ

Address: 801 MIRON LN

KINGSTON , NY



| | | | | | |
|--------------|-------------|------------------|----------|---------|-------------------|
| SHOPRITE_241 | Store # 241 | H: 4 ft 10.00 in | W: 44 ft | D: 2 ft | # of segments: 11 |
|--------------|-------------|------------------|----------|---------|-------------------|

| Name: 1_1 | | W:528.00 in | D:30.00 in | Avail Space: 2.89 in | | Ht Space: 11.00 in |
|-----------|-------------|----------------------------|---------------|----------------------|-------------|--------------------|
| ID | UPC | Name | Category | HFacings | Orientation | Units |
| 14094 | 78615000014 | STELLA ARTOIS 12/ 11.2 BTL | ABOVE PREMIUM | 1 | Front | 8 |
| 14094 | 78615000014 | STELLA ARTOIS 12/ 11.2 BTL | ABOVE PREMIUM | 1 | Front | 8 |
| 16691 | 8248812300 | BECKS 12/ 12 BTL | ABOVE PREMIUM | 1 | Side | 6 |
| 11300 | 728900016 | HEINEKEN 12/ 12 BTL | ABOVE PREMIUM | 1 | Side | 6 |
| 11338 | 7289000152 | HEINEKEN 18/ 12 BTL | ABOVE PREMIUM | 1 | Side | 2 |
| 15449 | 8066095787 | MODELO NEGRA 12/ 12 BTL | ABOVE PREMIUM | 1 | Side | 4 |
| 15436 | 8066095757 | MODELO ESPECIAL 12/ 12 BTL | ABOVE PREMIUM | 1 | Side | 4 |
| 15416 | 8066095675 | CORONA LIGHT 12/ 12 BTL | ABOVE PREMIUM | 1 | Front | 6 |
| 15403 | 8066095615 | CORONA 12/ 12 BTL | ABOVE PREMIUM | 3 | Side | 12 |

| Name: 6_7 | | W:528.00 in | D:22.00 in | Avail Space: 1.78 in | | Ht Space: 11.00 in |
|-----------|-------------|--------------------------------|---------------|----------------------|-------------|--------------------|
| ID | UPC | Name | Category | HFacings | Orientation | Units |
| 61628 | 78615000149 | STELLA ARTOIS 18/ 11.2 BTL | ABOVE PREMIUM | 1 | Front | 3 |
| 15464 | 8066095937 | ST PAULI GIRL LAGER 12/ 12 BTL | ABOVE PREMIUM | 1 | Front | 3 |
| 570 | 18195400004 | PERONI 12/ 11.2 BTL | ABOVE PREMIUM | 1 | Side | 2 |
| 11342 | 7289000159 | HEINEKEN LIGHT 12/ 12 BTL | ABOVE PREMIUM | 1 | Side | 2 |
| 15390 | 8066095315 | PACIFICO 12/ 12 BTL | ABOVE PREMIUM | 1 | Side | 2 |
| 15407 | 8066095623 | CORONA LIGHT 18/ 12 BTL | ABOVE PREMIUM | 1 | Front | 2 |
| 15417 | 8066095680 | CORONA 18/ 12 BTL | ABOVE PREMIUM | 1 | Front | 2 |
| 44966 | 3354495044 | CORONA PREMIER 12/ 12 CAN | ABOVE PREMIUM | 1 | Top 90 | 3 |
| 85046 | 8769200788 | SAMUEL ADAMS NEW ENGLAN... | ABOVE PREMIUM | 1 | Side 90 | 4 |

| Name: 6_8 | | W:528.00 in | D:22.00 in | Avail Space: 2.35 in | | Ht Space: 11.00 in |
|-----------|-------------|--------------------------------|---------------|----------------------|-------------|--------------------|
| ID | UPC | Name | Category | HFacings | Orientation | Units |
| 17293 | 8382012360 | GUINNESS DRAUGHT STOUT 4/ ... | ABOVE PREMIUM | 1 | Side | 4 |
| 14096 | 78615000016 | STELLA ARTOIS 12/ 11.2 CAN | ABOVE PREMIUM | 1 | Top 90 | 3 |
| 568 | 18195400002 | PERONI 6/ 11.2 BTL | ABOVE PREMIUM | 1 | Front | 4 |
| 11348 | 7289000188 | HEINEKEN LIGHT 12/ 12 CAN | ABOVE PREMIUM | 1 | Top 90 | 3 |
| 11301 | 7289000020 | HEINEKEN 12/ 12 CAN | ABOVE PREMIUM | 1 | Side 90 | 4 |
| 15429 | 8066095715 | MODELO ESPECIAL 12/ 12 CAN | ABOVE PREMIUM | 1 | Side 90 | 4 |
| 15416 | 8066095675 | CORONA LIGHT 12/ 12 BTL | ABOVE PREMIUM | 1 | Side | 2 |
| 44952 | 3354495042 | CORONA PREMIER 12/ 12 BTL | ABOVE PREMIUM | 1 | Side | 2 |
| 44952 | 3354495042 | CORONA PREMIER 12/ 12 BTL | ABOVE PREMIUM | 1 | Front | 2 |
| 45591 | 63848900189 | DOGFISH HEAD 60 MINUTE IPA ... | ABOVE PREMIUM | 1 | Side 90 | 4 |
| 21856 | 8769200109 | SAMUEL ADAMS SEASONAL 12/ ... | ABOVE PREMIUM | 1 | Side 90 | 4 |
| 65030 | 8769200497 | SAMUEL ADAMS 76 12/ 12 CAN | ABOVE PREMIUM | 1 | Side 90 | 4 |

| Name: 6_9 | | W:528.00 in | D:22.00 in | Avail Space: 1.97 in | | Ht Space: 11.00 in |
|-----------|-------------|----------------------------------|---------------|----------------------|-------------|--------------------|
| ID | UPC | Name | Category | HFacings | Orientation | Units |
| 22457 | 8834510151 | STRONGBOW GOLD 6/ 11.2 BTL | ABOVE PREMIUM | 1 | Front | 4 |
| 17284 | 8382010401 | GUINNESS DRAUGHT STOUT 6/ ... | ABOVE PREMIUM | 1 | Front | 4 |
| 14089 | 78615000001 | STELLA ARTOIS 6/ 11.2 BTL | ABOVE PREMIUM | 1 | Front | 4 |
| 22477 | 8839400006 | SPATEN OKTOBERFEST 6/ 12 BTL | ABOVE PREMIUM | 1 | Front | 4 |
| 14098 | 78615000030 | LEFFE BLONDE 6/ 11.2 BTL | ABOVE PREMIUM | 1 | Front | 4 |
| 89681 | 7289000621 | HEINEKEN 0.0 NEAR BEER 6/ 12 ... | ABOVE PREMIUM | 1 | Front | 4 |
| 11298 | 7289000011 | HEINEKEN 6/ 12 BTL | ABOVE PREMIUM | 1 | Front | 4 |
| 15442 | 8066095765 | MODELO ESPECIAL 6/ 12 BTL | ABOVE PREMIUM | 1 | Front | 3 |
| 15408 | 8066095625 | CORONA LIGHT 6/ 12 BTL | ABOVE PREMIUM | 1 | Front | 4 |
| 15406 | 8066095621 | CORONA LIGHT 12/ 12 CAN | ABOVE PREMIUM | 1 | Top 90 | 3 |
| 15400 | 8066095605 | CORONA 6/ 12 BTL | ABOVE PREMIUM | 1 | Front | 4 |
| 15426 | 8066095695 | CORONA 12/ 12 CAN | ABOVE PREMIUM | 1 | Side 90 | 4 |
| 88312 | 63848900196 | DOGFISH HEAD SEA QUENCH A... | ABOVE PREMIUM | 1 | Side 90 | 4 |

SHOPRITE_241

Store # 241

Cooler Size: WAKEFERN FOOD CORP/HQ

Address: 801 MIRON LN

KINGSTON , NY



| | | | | | |
|--------------|-------------|------------------|----------|---------|-------------------|
| SHOPRITE_241 | Store # 241 | H: 4 ft 10.00 in | W: 44 ft | D: 2 ft | # of segments: 11 |
|--------------|-------------|------------------|----------|---------|-------------------|

| Name: 1_1 | | W:528.00 in | D:30.00 in | Avail Space: 2.89 in | | Ht Space: 11.00 in | |
|-----------|-------------|-------------------------------|---------------|----------------------|-------------|--------------------|--|
| ID | UPC | Name | Category | HFacings | Orientation | Units | |
| 21940 | 8769201103 | SAMUEL ADAMS SEASONAL 12/... | ABOVE PREMIUM | 1 | Front | 8 | |
| 21957 | 8769210014 | SAMUEL ADAMS BOSTON LAGE... | ABOVE PREMIUM | 1 | Side | 6 | |
| 10183 | 7199009516 | BLUE MOON BELGIAN WHITE 12... | ABOVE PREMIUM | 2 | Side | 12 | |
| 10870 | 72383010009 | LAGUNITAS IPA 12/ 12 BTL | ABOVE PREMIUM | 1 | Front | 6 | |
| 3494 | 3410051607 | LEINIES SEASONAL PRIMARY 1... | ABOVE PREMIUM | 1 | Side | 4 | |
| 7044 | 64286090024 | FOUNDERS ALL DAY SESSION 1... | ABOVE PREMIUM | 1 | Side 90 | 8 | |
| 58827 | 73692011651 | GOOSE ISLAND IPA 15/ 12 CAN | ABOVE PREMIUM | 1 | Side 90 | 8 | |
| 52926 | 81601402080 | SOUTHERN TIER OVERPACKD 1... | ABOVE PREMIUM | 1 | Side 90 | 8 | |
| 10031 | 7167007106 | SARANAC 12 BEERS 12/ 12 BTL | ABOVE PREMIUM | 1 | Side | 4 | |
| 1620 | 1820028156 | SHOCK TOP BELGIAN WHITE 15... | ABOVE PREMIUM | 1 | Side 90 | 8 | |
| 1376 | 1820015981 | SHOCK TOP BELGIAN WHITE 12... | ABOVE PREMIUM | 1 | Side | 6 | |

| Name: 6_7 | | W:528.00 in | D:22.00 in | Avail Space: 1.78 in | | Ht Space: 11.00 in | |
|-----------|-------------|-----------------------------------|---------------|----------------------|-------------|--------------------|--|
| ID | UPC | Name | Category | HFacings | Orientation | Units | |
| 21988 | 8769229103 | SAMUEL ADAMS VARIETY PACK... | ABOVE PREMIUM | 1 | Front | 3 | |
| 13068 | 75452700470 | NEW BELGIUM VARIETY PACK 1... | ABOVE PREMIUM | 1 | Side 90 | 4 | |
| 63851 | 7199017052 | BLUE MOON BELGIAN WHITE 15... | ABOVE PREMIUM | 1 | Top | 4 | |
| 17211 | 8378337512 | SIERRA NEVADA PALE ALE 12/ 1... | ABOVE PREMIUM | 1 | Side | 2 | |
| 10872 | 72383010012 | LAGUNITAS LITTLE SUMPIN 12/... | ABOVE PREMIUM | 1 | Front | 3 | |
| 104227 | 3410001533 | LEINIES SPRITZEN VARIETY 12/... | ABOVE PREMIUM | 1 | Top 90 | 3 | |
| 46118 | 63123467112 | SWEETWATER HOP HASH SES... | ABOVE PREMIUM | 1 | Side 90 | 2 | |
| 59698 | 64286090005 | FOUNDERS CENTENNIAL IPA 15... | ABOVE PREMIUM | 1 | Side 90 | 2 | |
| 107006 | 73692011926 | GOOSE ISLAND SO-LO IPA 15/ 12... | ABOVE PREMIUM | 1 | Side 90 | 2 | |
| 54416 | 79837330085 | MAGIC HAT IPA PLATLIST 15/ 12 ... | ABOVE PREMIUM | 1 | Side 90 | 2 | |
| 75134 | 68174500134 | BLUE POINT TOASTED LAGER 1... | ABOVE PREMIUM | 1 | Side 90 | 2 | |

| Name: 6_8 | | W:528.00 in | D:22.00 in | Avail Space: 2.35 in | | Ht Space: 11.00 in | |
|-----------|-------------|---------------------------------|---------------|----------------------|-------------|--------------------|--|
| ID | UPC | Name | Category | HFacings | Orientation | Units | |
| 13037 | 75452700161 | NEW BELGIUM FAT TIRE 12/ 12 ... | ABOVE PREMIUM | 1 | Side 90 | 4 | |
| 10202 | 7199009554 | BLUE MOON BREWMASTER VA... | ABOVE PREMIUM | 1 | Side | 2 | |
| 10192 | 7199009536 | BLUE MOON SEASONAL 12/ 12 B... | ABOVE PREMIUM | 1 | Side | 2 | |
| 69223 | 72383010045 | LAGUNITAS SUMPIN EASY 12/ 1... | ABOVE PREMIUM | 1 | Side 90 | 4 | |
| 99516 | 72383021212 | LAGUNITAS IPA 12/ 12 CAN | ABOVE PREMIUM | 1 | Side 90 | 4 | |
| 11943 | 73692011118 | GOOSE ISLAND SUMMER ALE 6... | ABOVE PREMIUM | 1 | Front | 4 | |
| 2631 | 3061300031 | BROOKLYN LAGER 12/ 12 BTL | ABOVE PREMIUM | 1 | Side | 2 | |
| 24113 | 89968800031 | KEEGAN MOTHERS MILK 6/ 12 B... | ABOVE PREMIUM | 1 | Front | 4 | |
| 90200 | 7167009298 | SARANAC 100 IPA 12/ 12 CAN | ABOVE PREMIUM | 1 | Side 90 | 4 | |
| 10471 | 7199076400 | KILLIANS IRISH RED 12/ 12 BTL | ABOVE PREMIUM | 1 | Side | 2 | |
| 65828 | 1820020083 | MICHELOB ULTRA PURE GOLD ... | ABOVE PREMIUM | 1 | Front | 3 | |
| 1228 | 1820005990 | MICHELOB ULTRA 12/ 12 BTL | ABOVE PREMIUM | 1 | Front | 3 | |

| Name: 6_9 | | W:528.00 in | D:22.00 in | Avail Space: 1.97 in | | Ht Space: 11.00 in | |
|-----------|-------------|---------------------------------|---------------|----------------------|-------------|--------------------|--|
| ID | UPC | Name | Category | HFacings | Orientation | Units | |
| 21995 | 8769230050 | SAMUEL ADAMS SEASONAL 6/ 1... | ABOVE PREMIUM | 1 | Front | 4 | |
| 13009 | 75452700022 | NEW BELGIUM FAT TIRE 6/ 12 B... | ABOVE PREMIUM | 1 | Front | 4 | |
| 48655 | 85961200129 | 21ST AMENDMENT VARIETY PA... | ABOVE PREMIUM | 1 | Side 90 | 4 | |
| 99754 | 7199009592 | BLUE MOON LIGHT SKY 12/ 12 C... | ABOVE PREMIUM | 1 | Top 90 | 3 | |
| 10180 | 7199009511 | BLUE MOON BELGIAN WHITE 6/ ... | ABOVE PREMIUM | 1 | Front | 4 | |
| 107008 | 72383010612 | LAGUNITAS HAZY MEMORY 6/ 1... | ABOVE PREMIUM | 1 | Front | 4 | |
| 3492 | 3410051605 | LEINIES SEASONAL PRIMARY 6/ ... | ABOVE PREMIUM | 1 | Front | 4 | |
| 14141 | 78624311990 | FLYING DOG RAGING BITCH 6/ 1... | ABOVE PREMIUM | 1 | Front | 4 | |
| 90228 | 86036700072 | SLOOP JUICE BOMB IPA 6/ 12 CAN | ABOVE PREMIUM | 1 | Front | 8 | |

Cooler Size: WAKEFERN FOOD CORP/HQ

Address: 801 MIRON LN

KINGSTON , NY

| | | | | | | |
|-------|-------------|--------------------------------|---------------|---|-------|---|
| 75140 | 81760601081 | CAPTAIN LAWRENCE SEASONA... | ABOVE PREMIUM | 1 | Side | 4 |
| 138 | 0945001150 | SARANAC IPA 6/ 12 BTL | ABOVE PREMIUM | 1 | Front | 4 |
| 52632 | 86326700005 | NEWBURGH MEGA BOSS 4/ 16 C... | ABOVE PREMIUM | 1 | Front | 4 |
| 1345 | 1820013986 | SHOCK TOP BELGIAN WHITE 6/ ... | ABOVE PREMIUM | 1 | Front | 4 |
| 65024 | 1820020082 | MICHELOB ULTRA PURE GOLD ... | ABOVE PREMIUM | 1 | Front | 4 |



SHOPRITE_241

Store # 241

Cooler Size: WAKEFERN FOOD CORP/HQ

Address: 801 MIRON LN

KINGSTON , NY



| | | | | | |
|--------------|-------------|------------------|----------|---------|-------------------|
| SHOPRITE_241 | Store # 241 | H: 4 ft 10.00 in | W: 44 ft | D: 2 ft | # of segments: 11 |
|--------------|-------------|------------------|----------|---------|-------------------|

| Name: 1_1 | | W:528.00 in | D:30.00 in | Avail Space: 2.89 in | | Ht Space: 11.00 in |
|-----------|------------|-----------------------------|---------------|----------------------|-------------|--------------------|
| ID | UPC | Name | Category | HFacings | Orientation | Units |
| 1850 | 1820096721 | MICHELOB ULTRA 18/ 12 CAN | ABOVE PREMIUM | 1 | Side 90 | 6 |
| 1830 | 1820096624 | MICHELOB ULTRA 18/ 12 BTL | ABOVE PREMIUM | 1 | Side | 4 |
| 1849 | 1820096715 | MICHELOB ULTRA 24/ 12 CAN | ABOVE PREMIUM | 1 | Side 90 | 6 |
| 1341 | 1820012998 | LANDSHARK 12/ 12 BTL | ABOVE PREMIUM | 1 | Side | 6 |
| 23902 | 8992427896 | YUENGLING LAGER 12/ 12 BTL | PREMIUM | 1 | Side | 6 |
| 23928 | 8992488007 | YUENGLING LAGER 24/ 12 CAN | PREMIUM | 1 | Side 90 | 4 |
| 10329 | 7199030017 | COORS LIGHT 18/ 12 CAN | PREMIUM | 1 | Front | 13 |
| 10353 | 7199030079 | COORS LIGHT 24/ 12 BTL (HG) | PREMIUM | 1 | Front | 4 |
| 10352 | 7199030078 | COORS LIGHT 18/ 12 BTL | PREMIUM | 1 | Side | 4 |
| 3541 | 3410057306 | LITE 24/ 12 CAN | PREMIUM | 1 | Side 90 | 4 |

| Name: 6_7 | | W:528.00 in | D:22.00 in | Avail Space: 1.78 in | | Ht Space: 11.00 in |
|-----------|------------|------------------------------|---------------|----------------------|-------------|--------------------|
| ID | UPC | Name | Category | HFacings | Orientation | Units |
| 1849 | 1820096715 | MICHELOB ULTRA 24/ 12 CAN | ABOVE PREMIUM | 1 | Front | 3 |
| 1849 | 1820096715 | MICHELOB ULTRA 24/ 12 CAN | ABOVE PREMIUM | 1 | Front | 3 |
| 1849 | 1820096715 | MICHELOB ULTRA 24/ 12 CAN | ABOVE PREMIUM | 1 | Side | 1 |
| 1646 | 1820043381 | MICHELOB LIGHT 18/ 12 BTL | ABOVE PREMIUM | 1 | Side | 1 |
| 89759 | 1820020139 | BUD LIGHT LEMON TEA SEASO... | ABOVE PREMIUM | 1 | Side | 2 |
| 23915 | 8992441003 | YUENGLING LAGER 24/ 12 BTL | PREMIUM | 1 | Front | 2 |
| 10380 | 7199031600 | COORS LIGHT 24/ 12 CAN | PREMIUM | 2 | Top | 8 |

| Name: 6_8 | | W:528.00 in | D:22.00 in | Avail Space: 2.35 in | | Ht Space: 11.00 in |
|-----------|------------|--------------------------------|---------------|----------------------|-------------|--------------------|
| ID | UPC | Name | Category | HFacings | Orientation | Units |
| 1241 | 1820006991 | MICHELOB ULTRA 12/ 12 CAN | ABOVE PREMIUM | 1 | Top 90 | 3 |
| 1428 | 1820018992 | BUD LIGHT PLATINUM 12/ 12 BTL | ABOVE PREMIUM | 1 | Side | 2 |
| 1356 | 1820014990 | BUD LIGHT LIME 12/ 12 BTL | ABOVE PREMIUM | 1 | Side | 2 |
| 69618 | 1820020080 | BUD LIGHT ORANGE 12/ 12 BTL | ABOVE PREMIUM | 1 | Side | 2 |
| 23909 | 8992429386 | YUENGLING BLACK AND TAN 12... | PREMIUM | 1 | Front | 2 |
| 107121 | 8992477013 | YUENGLING FLIGHT 12/ 12 BTL | PREMIUM | 1 | Side | 2 |
| 5922 | 6206705155 | LABATT BLUE 12/ 11.5 BTL | ABOVE PREMIUM | 1 | Side | 2 |
| 10348 | 7199030069 | COORS LIGHT 12/ 12 BTL | PREMIUM | 1 | Front | 2 |
| 10234 | 7199010020 | COORS BANQUET 18/ 12 CAN | PREMIUM | 1 | Side 90 | 2 |
| 10284 | 7199017038 | COORS BANQUET 18/ 12 BTL (S... | PREMIUM | 1 | Front | 2 |
| 3552 | 3410057340 | LITE 18/ 12 CAN | PREMIUM | 1 | Top | 4 |

| Name: 6_9 | | W:528.00 in | D:22.00 in | Avail Space: 1.97 in | | Ht Space: 11.00 in |
|-----------|-------------|---------------------------------|---------------|----------------------|-------------|--------------------|
| ID | UPC | Name | Category | HFacings | Orientation | Units |
| 1227 | 1820005989 | MICHELOB ULTRA 6/ 12 BTL | ABOVE PREMIUM | 1 | Front | 4 |
| 86792 | 85777500729 | SAINT ARCHER GOLD 12/ 12 CAN | ABOVE PREMIUM | 1 | Top 90 | 3 |
| 107322 | 1820020209 | BUD LIGHT LEMONADE 12/ 12 C... | ABOVE PREMIUM | 1 | Top 90 | 3 |
| 104747 | 1820020210 | BUD LIGHT PEELS VARIETY 12/ ... | ABOVE PREMIUM | 1 | Top 90 | 3 |
| 73080 | 8992433481 | YUENGLING GOLDEN PILSNER ... | PREMIUM | 1 | Side 90 | 4 |
| 23900 | 8992427891 | YUENGLING LAGER 6/ 12 BTL | PREMIUM | 1 | Front | 4 |
| 23903 | 8992427898 | YUENGLING LAGER 12/ 12 CAN | PREMIUM | 1 | Top | 4 |
| 10155 | 7199000008 | COORS LIGHT 6/ 12 CAN | PREMIUM | 1 | Front | 8 |
| 10322 | 7199030005 | COORS LIGHT 6/ 12 BTL | PREMIUM | 1 | Front | 4 |
| 107283 | 7199070028 | COORS LIGHT 12/ 12 CAN (SLEEK) | PREMIUM | 3 | Top 90 | 9 |

SHOPRITE_241

Store # 241

Cooler Size: WAKEFERN FOOD CORP/HQ

Address: 801 MIRON LN

KINGSTON , NY



| | | | | | |
|--------------|-------------|------------------|----------|---------|-------------------|
| SHOPRITE_241 | Store # 241 | H: 4 ft 10.00 in | W: 44 ft | D: 2 ft | # of segments: 11 |
|--------------|-------------|------------------|----------|---------|-------------------|

| Name: 1_1 | | W:528.00 in | D:30.00 in | Avail Space: 2.89 in | | Ht Space: 11.00 in |
|-----------|------------|---------------------------|------------|----------------------|-------------|--------------------|
| ID | UPC | Name | Category | HFacings | Orientation | Units |
| 3519 | 3410057215 | LITE 24/ 12 BTL | PREMIUM | 1 | Side | 2 |
| 1664 | 1820053168 | BUD LIGHT 24/ 12 CAN | PREMIUM | 1 | Top | 8 |
| 1672 | 1820053349 | BUD LIGHT 24/ 12 BTL (HG) | PREMIUM | 1 | Side | 2 |
| 1304 | 1820011168 | BUD 24/ 12 CAN | PREMIUM | 1 | Side 90 | 4 |
| 1312 | 1820011349 | BUD 24/ 12 BTL (HG) | PREMIUM | 1 | Side | 2 |
| 3198 | 3410001509 | HIGH LIFE 12/ 12 BTL | ECONOMY | 1 | Side | 6 |
| 3193 | 3410001341 | HIGH LIFE 30/ 12 CAN | ECONOMY | 1 | Side | 4 |
| 2241 | 2210000170 | PABST 12/ 12 CAN | ECONOMY | 1 | Side 90 | 8 |
| 9886 | 7143934450 | ROLLING ROCK 12/ 12 CAN | ECONOMY | 1 | Side 90 | 8 |
| 66288 | 1820028443 | NATURAL ICE 15/ 12 CAN | ECONOMY | 1 | Side 90 | 4 |

| Name: 6_7 | | W:528.00 in | D:22.00 in | Avail Space: 1.78 in | | Ht Space: 11.00 in |
|-----------|------------|-----------------------------|------------|----------------------|-------------|--------------------|
| ID | UPC | Name | Category | HFacings | Orientation | Units |
| 10380 | 7199031600 | COORS LIGHT 24/ 12 CAN | PREMIUM | 1 | Top | 4 |
| 3532 | 3410057256 | LITE 18/ 12 BTL | PREMIUM | 1 | Front | 3 |
| 1670 | 1820053308 | BUD LIGHT 18/ 12 BTL | PREMIUM | 1 | Front | 3 |
| 1056 | 1820000769 | BUD LIGHT 12/ 12 BTL | PREMIUM | 1 | Front | 3 |
| 1310 | 1820011308 | BUD 18/ 12 BTL | PREMIUM | 2 | Side | 2 |
| 1058 | 1820000771 | BUD 12/ 12 BTL | PREMIUM | 1 | Side | 2 |
| 2763 | 3410000007 | HIGH LIFE 6/ 16 CAN | ECONOMY | 1 | Front | 4 |
| 61975 | 1820020077 | NATURAL LIGHT 15/ 12 CAN | ECONOMY | 1 | Side 90 | 2 |
| 8926 | 7031000040 | GENESEE CREAM ALE 6/ 12 BTL | ECONOMY | 1 | Front | 4 |

| Name: 6_8 | | W:528.00 in | D:22.00 in | Avail Space: 2.35 in | | Ht Space: 11.00 in |
|-----------|------------|-----------------------------|---------------|----------------------|-------------|--------------------|
| ID | UPC | Name | Category | HFacings | Orientation | Units |
| 3565 | 3410057509 | LITE 12/ 12 BTL | PREMIUM | 1 | Front | 3 |
| 1667 | 1820053218 | BUD LIGHT 18/ 12 CAN | PREMIUM | 1 | Top | 4 |
| 1667 | 1820053218 | BUD LIGHT 18/ 12 CAN | PREMIUM | 1 | Side 90 | 2 |
| 1307 | 1820011218 | BUD 18/ 12 CAN | PREMIUM | 1 | Top | 4 |
| 624 | 1820000063 | BUSCH 6/ 16 CAN | ECONOMY | 1 | Front | 4 |
| 3135 | 3410000882 | ICEHOUSE 6/ 16 CAN | ECONOMY | 1 | Front | 4 |
| 11307 | 7289000030 | BUCKLER NEAR BEER 6/ 12 BTL | ABOVE PREMIUM | 1 | Side | 3 |
| 11307 | 7289000030 | BUCKLER NEAR BEER 6/ 12 BTL | ABOVE PREMIUM | 1 | Side | 3 |
| 1705 | 1820079047 | ODOULS NEAR BEER 12/ 12 CAN | NA BEER | 1 | Side 90 | 4 |
| 15415 | 8066095643 | CORONA 1/ 24 CAN | ABOVE PREMIUM | 2 | Front | 14 |

| Name: 6_9 | | W:528.00 in | D:22.00 in | Avail Space: 1.97 in | | Ht Space: 11.00 in |
|-----------|-------------|-------------------------------|---------------|----------------------|-------------|--------------------|
| ID | UPC | Name | Category | HFacings | Orientation | Units |
| 10163 | 7199000047 | COORS BANQUET 12/ 12 CAN | PREMIUM | 1 | Top | 4 |
| 3579 | 3410057636 | LITE 12/ 12 CAN | PREMIUM | 1 | Side 90 | 4 |
| 1083 | 1820000833 | BUD LIGHT 6/ 12 BTL | PREMIUM | 1 | Front | 4 |
| 1659 | 1820053047 | BUD LIGHT 12/ 12 CAN | PREMIUM | 1 | Side 90 | 4 |
| 1084 | 1820000834 | BUD 6/ 12 BTL | PREMIUM | 1 | Front | 4 |
| 1297 | 1820011047 | BUD 12/ 12 CAN | PREMIUM | 1 | Side 90 | 4 |
| 16707 | 8248812700 | BECKS NEAR BEER 6/ 12 BTL | NA BEER | 1 | Front | 4 |
| 16707 | 8248812700 | BECKS NEAR BEER 6/ 12 BTL | NA BEER | 1 | Side | 2 |
| 4263 | 4257205715 | CLAUSTHALER PREMIUM 6/ 12 ... | ABOVE PREMIUM | 1 | Front | 4 |
| 1065 | 1820000784 | ODOULS NEAR BEER 6/ 12 BTL | NA BEER | 1 | Front | 4 |
| 63674 | 63598526038 | WHITE CLAW BLACK CHERRY 1... | ABOVE PREMIUM | 2 | Front | 16 |
| 97015 | 63598526039 | WHITE CLAW MANGO 1/ 19.2 CAN | ABOVE PREMIUM | 2 | Front | 16 |
| 106350 | 8769201014 | TRULY LEMONADE 1/24 CAN | ABOVE PREMIUM | 2 | Front | 14 |
| 6470 | 63598524985 | MIKES HARDER CRANBERRY L... | ABOVE PREMIUM | 2 | Front | 14 |

Cooler Size: WAKEFERN FOOD CORP/HQ

Address: 801 MIRON LN

KINGSTON , NY



| | | | | | |
|--------------|-------------|------------------|----------|---------|-------------------|
| SHOPRITE_241 | Store # 241 | H: 4 ft 10.00 in | W: 44 ft | D: 2 ft | # of segments: 11 |
|--------------|-------------|------------------|----------|---------|-------------------|

| Name: 1_1 | | W:528.00 in | D:30.00 in | Avail Space: 2.89 in | | Ht Space: 11.00 in |
|-----------|------------|---------------------------|------------|----------------------|-------------|--------------------|
| ID | UPC | Name | Category | HFacings | Orientation | Units |
| 1071 | 1820000801 | BUSCH LIGHT 12/ 12 CAN | ECONOMY | 1 | Side 90 | 4 |
| 1684 | 1820061047 | BUSCH 12/ 12 CAN | ECONOMY | 1 | Side 90 | 4 |
| 1681 | 1820061030 | BUSCH 30/ 12 CAN | ECONOMY | 1 | Front | 3 |
| 45405 | 7199048045 | KEYSTONE LIGHT 15/ 12 CAN | ECONOMY | 1 | Top | 6 |

| Name: 6_7 | | W:528.00 in | D:22.00 in | Avail Space: 1.78 in | | Ht Space: 11.00 in |
|-----------|------------|------------------------------|---------------|----------------------|-------------|--------------------|
| ID | UPC | Name | Category | HFacings | Orientation | Units |
| 10346 | 7199030065 | COORS LIGHT 1/24 CAN | PREMIUM | 3 | Front | 24 |
| 1521 | 1820025001 | BUD LIGHT 1/25 CAN | PREMIUM | 2 | Front | 16 |
| 1520 | 1820025000 | BUD 1/25 CAN | PREMIUM | 2 | Front | 16 |
| 75033 | 7031001532 | GENESEE BLACK 1/24 CAN | ABOVE PREMIUM | 3 | Front | 24 |
| 8969 | 7031000146 | GENESEE 1/24 CAN | ECONOMY | 2 | Front | 16 |
| 8973 | 7031000150 | GENESEE CREAM ALE 1/24 CAN | ECONOMY | 2 | Front | 16 |
| 3128 | 3410000820 | MILWAUKEES BEST ICE 1/24 CAN | ECONOMY | 2 | Front | 16 |

| Name: 6_8 | | W:528.00 in | D:22.00 in | Avail Space: 2.35 in | | Ht Space: 11.00 in |
|-----------|-------------|---------------------------------|---------------|----------------------|-------------|--------------------|
| ID | UPC | Name | Category | HFacings | Orientation | Units |
| 11327 | 7289000119 | HEINEKEN 1/24 CAN | ABOVE PREMIUM | 2 | Front | 14 |
| 66037 | 78615000170 | STELLA ARTOIS 1/19.2 CAN | ABOVE PREMIUM | 2 | Front | 16 |
| 43248 | 64286013024 | FOUNDERS ALL DAY SESSION L... | ABOVE PREMIUM | 2 | Front | 16 |
| 89768 | 75452701021 | NEW BELGIUM VODOO RANG... | ABOVE PREMIUM | 1 | Front | 8 |
| 89609 | 72383001192 | LAGUNITAS IPA 1/19.2 CAN | ABOVE PREMIUM | 2 | Front | 16 |
| 62882 | 85146400357 | REVOLUTION ANTI HERO 1/19.2... | ABOVE PREMIUM | 2 | Front | 16 |
| 58705 | 63848900306 | DOG FISH HEAD 60 MINUTE IPA ... | ABOVE PREMIUM | 2 | Front | 16 |
| 1530 | 1820025010 | MICHELOB ULTRA 1/25 CAN | ABOVE PREMIUM | 2 | Front | 14 |
| 10243 | 7199010071 | COORS BANQUET 1/24 CAN | PREMIUM | 2 | Front | 14 |

| Name: 6_9 | | W:528.00 in | D:22.00 in | Avail Space: 1.97 in | | Ht Space: 11.00 in |
|-----------|-------------|--------------------------------|---------------|----------------------|-------------|--------------------|
| ID | UPC | Name | Category | HFacings | Orientation | Units |
| 6462 | 63598524583 | MIKES HARDER LEMONADE 1/2... | ABOVE PREMIUM | 2 | Front | 14 |
| 56771 | 7031001483 | SEAGRAMS ESCAPES SPIKED J... | ABOVE PREMIUM | 2 | Front | 14 |
| 1565 | 1820025538 | BUD LIGHT LIME SEASONAL RIT... | ABOVE PREMIUM | 2 | Front | 14 |
| 66064 | 61300874829 | ARNOLD PALMER SPIKED HALF ... | ABOVE PREMIUM | 2 | Front | 14 |
| 22099 | 8769283231 | TWISTED TEA ORIGINAL 1/24 C... | ABOVE PREMIUM | 2 | Front | 14 |
| 22077 | 8769275231 | TWISTED TEA HALF AND HALF ... | ABOVE PREMIUM | 2 | Front | 14 |
| 9452 | 7089701331 | FOSTERS 1/25.4 CAN | ABOVE PREMIUM | 2 | Front | 12 |
| 9488 | 7089718331 | FOSTERS PREMIUM 1/25.4 CAN | ABOVE PREMIUM | 2 | Front | 12 |

| Name: 11_14 | | W:48.00 in | D:22.00 in | Avail Space: 2.26 in | | Ht Space: 9.00 in |
|-------------|------------|-------------------------------|------------|----------------------|-------------|-------------------|
| ID | UPC | Name | Category | HFacings | Orientation | Units |
| 13978 | 7825000605 | STEEL RESERVE ALLOY BLK BE... | ECONOMY | 2 | Front | 14 |
| 13877 | 7825000328 | STEEL RESERVE 211 1/24 CAN | ECONOMY | 2 | Front | 14 |
| 10436 | 7199048024 | KEYSTONE LIGHT 1/24 CAN | ECONOMY | 2 | Front | 14 |
| 10412 | 7199047712 | KEYSTONE ICE 1/24 CAN | ECONOMY | 2 | Front | 14 |
| 1522 | 1820025002 | NATURAL LIGHT 1/25 CAN | ECONOMY | 2 | Front | 14 |
| 1533 | 1820025013 | NATTY DADDY 1/25 CAN | ECONOMY | 4 | Front | 28 |
| 1528 | 1820025008 | NATURAL ICE 1/25 CAN | ECONOMY | 2 | Front | 14 |

SHOPRITE_241

Store # 241

SHOPRITE_241 Store # 241 H: 4 ft 10.00 in W: 44 ft D: 2 ft # of segments: 11

Name: 1_1 W:528.00 in D:30.00 in Avail Space: 2.89 in Ht Space: 11.00 in

| ID | UPC | Name | Category | HFacings | Orientation | Units |
|--------|-------------|--------------------------------|---------------|----------|-------------|-------|
| 45151 | 63598554890 | WHITE CLAW VARIETY PACK 12... | ABOVE PREMIUM | 2 | Side | 18 |
| 106595 | 63598580006 | WHITE CLAW VARIETY PACK 12... | ABOVE PREMIUM | 1 | Side | 9 |
| 65035 | 8769200686 | TRULY VARIETY BERRY 12/12 C... | ABOVE PREMIUM | 1 | Side | 9 |
| 87955 | 8769200804 | TRULY VARIETY TROPICAL 12/1... | ABOVE PREMIUM | 1 | Side | 9 |
| 105977 | 1820020208 | BUD LIGHT SELTZER VARIETY ... | ABOVE PREMIUM | 1 | Side | 9 |
| 105038 | 3410001232 | VIZZY VARIETY 12/12 CAN | ABOVE PREMIUM | 1 | Side | 9 |
| 104728 | 3354400043 | CORONA SELTZER VARIETY 12/... | ABOVE PREMIUM | 1 | Top 90 | 8 |
| 15329 | 8043280290 | SEAGRAMS ESCAPES VARIETY... | ABOVE PREMIUM | 1 | Side | 6 |
| 6414 | 63598512001 | MIKES HARD LEMONADE 12/11... | ABOVE PREMIUM | 1 | Side | 6 |
| 6433 | 63598512998 | MIKES HARD VARIETY PACK 12... | ABOVE PREMIUM | 1 | Side | 6 |
| 21815 | 8769200017 | ANGRY ORCHARD EXPLORER ... | ABOVE PREMIUM | 1 | Side | 6 |
| 21823 | 8769200033 | ANGRY ORCHARD CRISP APPL... | ABOVE PREMIUM | 1 | Side | 6 |
| 1514 | 1820023997 | STELLA ARTOIS CIDRE 12/12 B... | ABOVE PREMIUM | 1 | Side | 4 |
| 14094 | 78615000014 | STELLA ARTOIS 12/11.2 BTL | ABOVE PREMIUM | 1 | Front | 8 |
| 14094 | 78615000014 | STELLA ARTOIS 12/11.2 BTL | ABOVE PREMIUM | 1 | Front | 8 |
| 16691 | 8248812300 | BECKS 12/12 BTL | ABOVE PREMIUM | 1 | Side | 6 |
| 11300 | 7289000016 | HEINEKEN 12/12 BTL | ABOVE PREMIUM | 1 | Side | 6 |
| 11338 | 7289000152 | HEINEKEN 18/12 BTL | ABOVE PREMIUM | 1 | Side | 2 |
| 15449 | 8066095787 | MODELO NEGRA 12/12 BTL | ABOVE PREMIUM | 1 | Side | 4 |
| 15436 | 8066095757 | MODELO ESPECIAL 12/12 BTL | ABOVE PREMIUM | 1 | Side | 4 |
| 15416 | 8066095675 | CORONA LIGHT 12/12 BTL | ABOVE PREMIUM | 1 | Front | 6 |
| 15403 | 8066095615 | CORONA 12/12 BTL | ABOVE PREMIUM | 3 | Side | 12 |
| 21940 | 8769201103 | SAMUEL ADAMS SEASONAL 12... | ABOVE PREMIUM | 1 | Front | 8 |
| 21957 | 8769210014 | SAMUEL ADAMS BOSTON LAG... | ABOVE PREMIUM | 1 | Side | 6 |
| 10183 | 7199009516 | BLUE MOON BELGIAN WHITE 1... | ABOVE PREMIUM | 2 | Side | 12 |
| 10870 | 72383010009 | LAGUNITAS IPA 12/12 BTL | ABOVE PREMIUM | 1 | Front | 6 |
| 3494 | 3410051607 | LEINIES SEASONAL PRIMARY 1... | ABOVE PREMIUM | 1 | Side | 4 |
| 7044 | 64286090024 | FOUNDERS ALL DAY SESSION ... | ABOVE PREMIUM | 1 | Side 90 | 8 |
| 58827 | 73692011651 | GOOSE ISLAND IPA 15/12 CAN | ABOVE PREMIUM | 1 | Side 90 | 8 |
| 52926 | 81601402080 | SOUTHERN TIER OVERPACKD ... | ABOVE PREMIUM | 1 | Side 90 | 8 |
| 10031 | 7167007106 | SARANAC 12 BEERS 12/12 BTL | ABOVE PREMIUM | 1 | Side | 4 |
| 1620 | 1820028156 | SHOCK TOP BELGIAN WHITE 1... | ABOVE PREMIUM | 1 | Side 90 | 8 |
| 1376 | 1820015981 | SHOCK TOP BELGIAN WHITE 1... | ABOVE PREMIUM | 1 | Side | 6 |
| 1850 | 1820096721 | MICHELOB ULTRA 18/12 CAN | ABOVE PREMIUM | 1 | Side 90 | 6 |
| 1830 | 1820096624 | MICHELOB ULTRA 18/12 BTL | ABOVE PREMIUM | 1 | Side | 4 |
| 1849 | 1820096715 | MICHELOB ULTRA 24/12 CAN | ABOVE PREMIUM | 1 | Side 90 | 6 |
| 1341 | 1820012998 | LANDSHARK 12/12 BTL | ABOVE PREMIUM | 1 | Side | 6 |
| 23902 | 8992427896 | YUENGLING LAGER 12/12 BTL | PREMIUM | 1 | Side | 6 |
| 23928 | 8992488007 | YUENGLING LAGER 24/12 CAN | PREMIUM | 1 | Side 90 | 4 |
| 10329 | 7199030017 | COORS LIGHT 18/12 CAN | PREMIUM | 1 | Front | 13 |
| 10353 | 7199030079 | COORS LIGHT 24/12 BTL (HG) | PREMIUM | 1 | Front | 4 |
| 10352 | 7199030078 | COORS LIGHT 18/12 BTL | PREMIUM | 1 | Side | 4 |
| 3541 | 3410057306 | LITE 24/12 CAN | PREMIUM | 1 | Side 90 | 4 |
| 3519 | 3410057215 | LITE 24/12 BTL | PREMIUM | 1 | Side | 2 |
| 1664 | 1820053168 | BUD LIGHT 24/12 CAN | PREMIUM | 1 | Top | 8 |
| 1672 | 1820053349 | BUD LIGHT 24/12 BTL (HG) | PREMIUM | 1 | Side | 2 |
| 1304 | 1820011168 | BUD 24/12 CAN | PREMIUM | 1 | Side 90 | 4 |
| 1312 | 1820011349 | BUD 24/12 BTL (HG) | PREMIUM | 1 | Side | 2 |
| 3198 | 3410001509 | HIGH LIFE 12/12 BTL | ECONOMY | 1 | Side | 6 |
| 3193 | 3410001341 | HIGH LIFE 30/12 CAN | ECONOMY | 1 | Side | 4 |
| 2241 | 2210000170 | PABST 12/12 CAN | ECONOMY | 1 | Side 90 | 8 |
| 9886 | 7143934450 | ROLLING ROCK 12/12 CAN | ECONOMY | 1 | Side 90 | 8 |
| 66288 | 1820028443 | NATURAL ICE 15/12 CAN | ECONOMY | 1 | Side 90 | 4 |

SHOPRITE_241

Store # 241

| | | | | | | |
|-------|------------|--------------------------|---------|---|---------|---|
| 1071 | 182000801 | BUSCH LIGHT 12/12 CAN | ECONOMY | 1 | Side 90 | 4 |
| 1684 | 1820061047 | BUSCH 12/12 CAN | ECONOMY | 1 | Side 90 | 4 |
| 1681 | 1820061030 | BUSCH 30/12 CAN | ECONOMY | 1 | Front | 3 |
| 45405 | 7199048045 | KEYSTONE LIGHT 15/12 CAN | ECONOMY | 1 | Top | 6 |

| Name: 6_7 | | W:528.00 in | D:22.00 in | Avail Space: 1.78 in | Ht Space: 11.00 in | |
|-----------|-------------|---------------------------------|---------------|----------------------|--------------------|-------|
| ID | UPC | Name | Category | HFacings | Orientation | Units |
| 83125 | 63598526089 | WHITE CLAW BLACK CHERRY ... | ABOVE PREMIUM | 2 | Top 90 | 6 |
| 104272 | 8769200991 | TRULY LEMONADE VARIETY 12... | ABOVE PREMIUM | 2 | Top 90 | 6 |
| 43031 | 8769200424 | TRULY VARIETY CITRUS 12/12 ... | ABOVE PREMIUM | 1 | Top 90 | 3 |
| 45535 | 8200078142 | SMIRNOFF SPIKED SPARKLING... | ABOVE PREMIUM | 1 | Top 90 | 3 |
| 89835 | 85231300483 | PRESS VARIETY 12/12 CAN | ABOVE PREMIUM | 1 | Top 90 | 3 |
| 86777 | 3354400013 | CORONA REFRESCA VARIETY ... | ABOVE PREMIUM | 1 | Top 90 | 3 |
| 107115 | 7031001647 | SEAGRAMS ESCAPE ITALIAN IC... | ABOVE PREMIUM | 1 | Side | 2 |
| 6515 | 63598526001 | MIKES HARD VARIETY PACK 12... | ABOVE PREMIUM | 1 | Side 90 | 4 |
| 65025 | 63598526042 | MIKES HARDER VARIETY PACK... | ABOVE PREMIUM | 1 | Side 90 | 4 |
| 85041 | 8769200754 | ANGRY ORCHARD ROSE 12/12 ... | ABOVE PREMIUM | 1 | Top 90 | 3 |
| 99509 | 8769200838 | ANGRY ORCHARD UNFILTERE... | ABOVE PREMIUM | 1 | Front | 4 |
| 17286 | 8382010403 | GUINNESS DRAUGHT STOUT 1... | ABOVE PREMIUM | 1 | Side | 2 |
| 61628 | 78615000149 | STELLA ARTOIS 18/11.2 BTL | ABOVE PREMIUM | 1 | Front | 3 |
| 15464 | 8066095937 | ST PAULI GIRL LAGER 12/12 BTL | ABOVE PREMIUM | 1 | Front | 3 |
| 570 | 18195400004 | PERONI 12/11.2 BTL | ABOVE PREMIUM | 1 | Side | 2 |
| 11342 | 7289000159 | HEINEKEN LIGHT 12/12 BTL | ABOVE PREMIUM | 1 | Side | 2 |
| 15390 | 8066095315 | PACIFICO 12/12 BTL | ABOVE PREMIUM | 1 | Side | 2 |
| 15407 | 8066095623 | CORONA LIGHT 18/12 BTL | ABOVE PREMIUM | 1 | Front | 2 |
| 15417 | 8066095680 | CORONA 18/12 BTL | ABOVE PREMIUM | 1 | Front | 2 |
| 44966 | 3354495044 | CORONA PREMIER 12/12 CAN | ABOVE PREMIUM | 1 | Top 90 | 3 |
| 85046 | 8769200788 | SAMUEL ADAMS NEW ENGLAN... | ABOVE PREMIUM | 1 | Side 90 | 4 |
| 21988 | 8769229103 | SAMUEL ADAMS VARIETY PAC... | ABOVE PREMIUM | 1 | Front | 3 |
| 13068 | 75452700470 | NEW BELGIUM VARIETY PACK ... | ABOVE PREMIUM | 1 | Side 90 | 4 |
| 63851 | 7199017052 | BLUE MOON BELGIAN WHITE 1... | ABOVE PREMIUM | 1 | Top | 4 |
| 17211 | 8378337512 | SIERRA NEVADA PALE ALE 12/... | ABOVE PREMIUM | 1 | Side | 2 |
| 10872 | 72383010012 | LAGUNITAS LITTLE SUMPIN 12/... | ABOVE PREMIUM | 1 | Front | 3 |
| 104227 | 3410001533 | LEINIES SPRITZEN VARIETY 12/... | ABOVE PREMIUM | 1 | Top 90 | 3 |
| 46118 | 63123467112 | SWEETWATER HOP HASH SES... | ABOVE PREMIUM | 1 | Side 90 | 2 |
| 59698 | 64286090005 | FOUNDERS CENTENNIAL IPA 1... | ABOVE PREMIUM | 1 | Side 90 | 2 |
| 107006 | 73692011926 | GOOSE ISLAND SO-LO IPA 15/1... | ABOVE PREMIUM | 1 | Side 90 | 2 |
| 54416 | 79837330085 | MAGIC HAT IPA PLATLIST 15/12... | ABOVE PREMIUM | 1 | Side 90 | 2 |
| 75134 | 68174500134 | BLUE POINT TOASTED LAGER ... | ABOVE PREMIUM | 1 | Side 90 | 2 |
| 1849 | 1820096715 | MICHELOB ULTRA 24/12 CAN | ABOVE PREMIUM | 1 | Front | 3 |
| 1849 | 1820096715 | MICHELOB ULTRA 24/12 CAN | ABOVE PREMIUM | 1 | Front | 3 |
| 1849 | 1820096715 | MICHELOB ULTRA 24/12 CAN | ABOVE PREMIUM | 1 | Side | 1 |
| 1646 | 1820043381 | MICHELOB LIGHT 18/12 BTL | ABOVE PREMIUM | 1 | Side | 1 |
| 89759 | 1820020139 | BUD LIGHT LEMON TEA SEAS... | ABOVE PREMIUM | 1 | Side | 2 |
| 23915 | 8992441003 | YUENGLING LAGER 24/12 BTL | PREMIUM | 1 | Front | 2 |
| 10380 | 7199031600 | COORS LIGHT 24/12 CAN | PREMIUM | 2 | Top | 8 |
| 10380 | 7199031600 | COORS LIGHT 24/12 CAN | PREMIUM | 1 | Top | 4 |
| 3532 | 3410057256 | LITE 18/12 BTL | PREMIUM | 1 | Front | 3 |
| 1670 | 1820053308 | BUD LIGHT 18/12 BTL | PREMIUM | 1 | Front | 3 |
| 1056 | 1820000769 | BUD LIGHT 12/12 BTL | PREMIUM | 1 | Front | 3 |
| 1310 | 1820011308 | BUD 18/12 BTL | PREMIUM | 2 | Side | 2 |
| 1058 | 1820000771 | BUD 12/12 BTL | PREMIUM | 1 | Side | 2 |
| 2763 | 3410000007 | HIGH LIFE 6/16 CAN | ECONOMY | 1 | Front | 4 |
| 61975 | 1820020077 | NATURAL LIGHT 15/12 CAN | ECONOMY | 1 | Side 90 | 2 |
| 8926 | 7031000040 | GENESEE CREAM ALE 6/12 BTL | ECONOMY | 1 | Front | 4 |
| 10346 | 7199030065 | COORS LIGHT 1/24 CAN | PREMIUM | 3 | Front | 24 |
| 1521 | 1820025001 | BUD LIGHT 1/25 CAN | PREMIUM | 2 | Front | 16 |
| 1520 | 1820025000 | BUD 1/25 CAN | PREMIUM | 2 | Front | 16 |

SHOPRITE_241

Store # 241

| | | | | | | |
|-------|------------|-------------------------------|---------------|---|-------|----|
| 75033 | 7031001532 | GENESEE BLACK 1/24 CAN | ABOVE PREMIUM | 3 | Front | 24 |
| 8969 | 7031000146 | GENESEE 1/24 CAN | ECONOMY | 2 | Front | 16 |
| 8973 | 7031000150 | GENESEE CREAM ALE 1/24 CAN | ECONOMY | 2 | Front | 16 |
| 3128 | 3410000820 | MILWAUKEES BEST ICE 1/24 C... | ECONOMY | 2 | Front | 16 |

| Name: 6_8 | | W:528.00 in | D:22.00 in | Avail Space: 2.35 in | Ht Space: 11.00 in | | |
|-----------|-------------|--------------------------------|---------------|----------------------|--------------------|-------|--|
| ID | UPC | Name | Category | HFacings | Orientation | Units | |
| 93496 | 63598510033 | WHITE CLAW MANGO 12/12 CAN | ABOVE PREMIUM | 1 | Top 90 | 3 | |
| 73277 | 3354495076 | SVEDKA SPARKLING SELTZER ... | ABOVE PREMIUM | 1 | Top 90 | 3 | |
| 97735 | 4182770112 | ARCTIC SUMMER SPIKED VARI... | ABOVE PREMIUM | 1 | Front 90 | 3 | |
| 86788 | 3410051681 | CAPE LINE VARIETY PACK 12/1... | ABOVE PREMIUM | 1 | Front 90 | 3 | |
| 86818 | 1820020130 | RITAS SPRITZ VARIETY PACK 1... | ABOVE PREMIUM | 1 | Top 90 | 3 | |
| 106991 | 8200079257 | SMIRNOFF SPIKED SPARKLING... | ABOVE PREMIUM | 1 | Top 90 | 3 | |
| 19178 | 85389700227 | BON AND VIV SPIKED SELTZER... | ABOVE PREMIUM | 1 | Top 90 | 3 | |
| 6535 | 63598560611 | MIKES HARD CRANBERRY PAS... | ABOVE PREMIUM | 1 | Front | 4 | |
| 6398 | 63598506074 | MIKES HARD SEASONAL 6/11.2 ... | ABOVE PREMIUM | 1 | Front | 4 | |
| 6391 | 63598506064 | MIKES HARD BLACK RASPBER... | ABOVE PREMIUM | 1 | Front | 4 | |
| 22096 | 8769283134 | TWISTED TEA ORIGINAL 12/12 ... | ABOVE PREMIUM | 1 | Top 90 | 2 | |
| 22076 | 8769275134 | TWISTED TEA HALF AND HALF ... | ABOVE PREMIUM | 1 | Top 90 | 2 | |
| 68928 | 61300875220 | ARNOLD PALMER SPIKED HAL... | ABOVE PREMIUM | 1 | Front 90 | 3 | |
| 22090 | 8769282102 | ANGRY ORCHARD CRISP APPL... | ABOVE PREMIUM | 1 | Front | 4 | |
| 17305 | 8382012393 | GUINNESS EXTRA STOUT 6/12 ... | ABOVE PREMIUM | 1 | Front | 4 | |
| 17293 | 8382012360 | GUINNESS DRAUGHT STOUT 4/... | ABOVE PREMIUM | 1 | Side | 4 | |
| 14096 | 78615000016 | STELLA ARTOIS 12/11.2 CAN | ABOVE PREMIUM | 1 | Top 90 | 3 | |
| 568 | 18195400002 | PERONI 6/11.2 BTL | ABOVE PREMIUM | 1 | Front | 4 | |
| 11348 | 7289000188 | HEINEKEN LIGHT 12/12 CAN | ABOVE PREMIUM | 1 | Top 90 | 3 | |
| 11301 | 7289000020 | HEINEKEN 12/12 CAN | ABOVE PREMIUM | 1 | Side 90 | 4 | |
| 15429 | 8066095715 | MODELO ESPECIAL 12/12 CAN | ABOVE PREMIUM | 1 | Side 90 | 4 | |
| 15416 | 8066095675 | CORONA LIGHT 12/12 BTL | ABOVE PREMIUM | 1 | Side | 2 | |
| 44952 | 3354495042 | CORONA PREMIER 12/12 BTL | ABOVE PREMIUM | 1 | Side | 2 | |
| 44952 | 3354495042 | CORONA PREMIER 12/12 BTL | ABOVE PREMIUM | 1 | Front | 2 | |
| 45591 | 63848900189 | DOGFISH HEAD 60 MINUTE IPA... | ABOVE PREMIUM | 1 | Side 90 | 4 | |
| 21856 | 8769200109 | SAMUEL ADAMS SEASONAL 12... | ABOVE PREMIUM | 1 | Side 90 | 4 | |
| 65030 | 8769200497 | SAMUEL ADAMS 76 12/12 CAN | ABOVE PREMIUM | 1 | Side 90 | 4 | |
| 13037 | 75452700161 | NEW BELGIUM FAT TIRE 12/12 ... | ABOVE PREMIUM | 1 | Side 90 | 4 | |
| 10202 | 7199009554 | BLUE MOON BREWMASTER VA... | ABOVE PREMIUM | 1 | Side | 2 | |
| 10192 | 7199009536 | BLUE MOON SEASONAL 12/12 ... | ABOVE PREMIUM | 1 | Side | 2 | |
| 69223 | 72383010045 | LAGUNITAS SUMPIN EASY 12/1... | ABOVE PREMIUM | 1 | Side 90 | 4 | |
| 99516 | 72383021212 | LAGUNITAS IPA 12/12 CAN | ABOVE PREMIUM | 1 | Side 90 | 4 | |
| 11943 | 73692011118 | GOOSE ISLAND SUMMER ALE ... | ABOVE PREMIUM | 1 | Front | 4 | |
| 2631 | 3061300031 | BROOKLYN LAGER 12/12 BTL | ABOVE PREMIUM | 1 | Side | 2 | |
| 24113 | 89968800031 | KEEGAN MOTHERS MILK 6/12 ... | ABOVE PREMIUM | 1 | Front | 4 | |
| 90200 | 7167009298 | SARANAC 100 IPA 12/12 CAN | ABOVE PREMIUM | 1 | Side 90 | 4 | |
| 10471 | 7199076400 | KILLIANS IRISH RED 12/12 BTL | ABOVE PREMIUM | 1 | Side | 2 | |
| 65828 | 1820020083 | MICHELOB ULTRA PURE GOLD... | ABOVE PREMIUM | 1 | Front | 3 | |
| 1228 | 1820005990 | MICHELOB ULTRA 12/12 BTL | ABOVE PREMIUM | 1 | Front | 3 | |
| 1241 | 1820006991 | MICHELOB ULTRA 12/12 CAN | ABOVE PREMIUM | 1 | Top 90 | 3 | |
| 1428 | 1820018992 | BUD LIGHT PLATINUM 12/12 BTL | ABOVE PREMIUM | 1 | Side | 2 | |
| 1356 | 1820014990 | BUD LIGHT LIME 12/12 BTL | ABOVE PREMIUM | 1 | Side | 2 | |
| 69618 | 1820020080 | BUD LIGHT ORANGE 12/12 BTL | ABOVE PREMIUM | 1 | Side | 2 | |
| 23909 | 8992429386 | YUENGLING BLACK AND TAN 1... | PREMIUM | 1 | Front | 2 | |
| 107121 | 8992477013 | YUENGLING FLIGHT 12/12 BTL | PREMIUM | 1 | Side | 2 | |
| 5922 | 6206705155 | LABATT BLUE 12/11.5 BTL | ABOVE PREMIUM | 1 | Side | 2 | |
| 10348 | 7199030069 | COORS LIGHT 12/12 BTL | PREMIUM | 1 | Front | 2 | |
| 10234 | 7199010020 | COORS BANQUET 18/12 CAN | PREMIUM | 1 | Side 90 | 2 | |
| 10284 | 7199017038 | COORS BANQUET 18/12 BTL (S... | PREMIUM | 1 | Front | 2 | |
| 3552 | 3410057340 | LITE 18/12 CAN | PREMIUM | 1 | Top | 4 | |
| 3565 | 3410057509 | LITE 12/12 BTL | PREMIUM | 1 | Front | 3 | |

SHOPRITE_241

Store # 241

| | | | | | | |
|-------|-------------|--------------------------------|---------------|---|---------|----|
| 1667 | 1820053218 | BUD LIGHT 18/12 CAN | PREMIUM | 1 | Top | 4 |
| 1667 | 1820053218 | BUD LIGHT 18/12 CAN | PREMIUM | 1 | Side 90 | 2 |
| 1307 | 1820011218 | BUD 18/12 CAN | PREMIUM | 1 | Top | 4 |
| 624 | 1820000063 | BUSCH 6/16 CAN | ECONOMY | 1 | Front | 4 |
| 3135 | 3410000882 | ICEHOUSE 6/16 CAN | ECONOMY | 1 | Front | 4 |
| 11307 | 7289000030 | BUCKLER NEAR BEER 6/12 BTL | ABOVE PREMIUM | 1 | Side | 3 |
| 11307 | 7289000030 | BUCKLER NEAR BEER 6/12 BTL | ABOVE PREMIUM | 1 | Side | 3 |
| 1705 | 1820079047 | ODOULS NEAR BEER 12/12 CAN | NA BEER | 1 | Side 90 | 4 |
| 15415 | 8066095643 | CORONA 1/24 CAN | ABOVE PREMIUM | 2 | Front | 14 |
| 11327 | 7289000119 | HEINEKEN 1/24 CAN | ABOVE PREMIUM | 2 | Front | 14 |
| 66037 | 78615000170 | STELLA ARTOIS 1/19.2 CAN | ABOVE PREMIUM | 2 | Front | 16 |
| 43248 | 64286013024 | FOUNDERS ALL DAY SESSION ... | ABOVE PREMIUM | 2 | Front | 16 |
| 89768 | 75452701021 | NEW BELGIUM VOODOO RANG... | ABOVE PREMIUM | 1 | Front | 8 |
| 89609 | 72383001192 | LAGUNITAS IPA 1/19.2 CAN | ABOVE PREMIUM | 2 | Front | 16 |
| 62882 | 85146400357 | REVOLUTION ANTI HERO 1/19.2... | ABOVE PREMIUM | 2 | Front | 16 |
| 58705 | 63848900306 | DOGFISH HEAD 60 MINUTE IPA... | ABOVE PREMIUM | 2 | Front | 16 |
| 1530 | 1820025010 | MICHELOB ULTRA 1/25 CAN | ABOVE PREMIUM | 2 | Front | 14 |
| 10243 | 7199010071 | COORS BANQUET 1/24 CAN | PREMIUM | 2 | Front | 14 |

| Name: 6_9 | | W:528.00 in | D:22.00 in | Avail Space: 1.97 in | Ht Space: 11.00 in | |
|-----------|-------------|--------------------------------|---------------|----------------------|--------------------|-------|
| ID | UPC | Name | Category | HFacings | Orientation | Units |
| 6441 | 63598520025 | WHITE CLAW BLACK CHERRY ... | ABOVE PREMIUM | 1 | Top 90 | 3 |
| 104752 | 63598500021 | WHITE CLAW 70 PINEAPPLE 6/... | ABOVE PREMIUM | 1 | Top 90 | 3 |
| 83884 | 63598526087 | WHITE CLAW MANGO 6/12 CAN | ABOVE PREMIUM | 1 | Top 90 | 3 |
| 68882 | 8769200678 | TRULY WILD BERRY 6/12 CAN | ABOVE PREMIUM | 1 | Top 90 | 3 |
| 104273 | 8769200989 | TRULY WATERMELON KIWI 6/1... | ABOVE PREMIUM | 1 | Side | 3 |
| 63326 | 3410051660 | HENRYS HARD SPARKLING VA... | ABOVE PREMIUM | 1 | Top 90 | 3 |
| 79757 | 3410098959 | HENRYS HARD SPARKLING VA... | ABOVE PREMIUM | 1 | Top 90 | 3 |
| 89831 | 1820028548 | BON AND VIV SPIKED SELTZER... | ABOVE PREMIUM | 1 | Top 90 | 3 |
| 15832 | 81582901006 | CAYMAN JACK MARGARITA 6/1... | ABOVE PREMIUM | 1 | Front | 4 |
| 6444 | 63598522413 | MIKES HARD STRAWBERRY LE... | ABOVE PREMIUM | 1 | Front | 4 |
| 6413 | 63598510062 | MIKES HARD LEMONADE 6/11.2... | ABOVE PREMIUM | 1 | Front | 4 |
| 6402 | 63598506744 | MIKES HARD BLACK CHERRY ... | ABOVE PREMIUM | 1 | Front | 4 |
| 6402 | 63598506744 | MIKES HARD BLACK CHERRY ... | ABOVE PREMIUM | 1 | Side | 2 |
| 103099 | 2210005002 | PABST HARD COFFEE 4/11 CAN | ABOVE PREMIUM | 1 | Front | 4 |
| 107183 | 61300875550 | ARNOLD PALMER SPIKED LEM... | ABOVE PREMIUM | 1 | Top 90 | 3 |
| 65019 | 8769200660 | ANGRY ORCHARD ROSE 6/12 B... | ABOVE PREMIUM | 1 | Front | 4 |
| 22457 | 8834510151 | STRONGBOW GOLD 6/11.2 BTL | ABOVE PREMIUM | 1 | Front | 4 |
| 17284 | 8382010401 | GUINNESS DRAUGHT STOUT 6/... | ABOVE PREMIUM | 1 | Front | 4 |
| 14089 | 78615000001 | STELLA ARTOIS 6/11.2 BTL | ABOVE PREMIUM | 1 | Front | 4 |
| 22477 | 88394000006 | SPATEN OKTOBERFEST 6/12 B... | ABOVE PREMIUM | 1 | Front | 4 |
| 14098 | 78615000030 | LEFFE BLONDE 6/11.2 BTL | ABOVE PREMIUM | 1 | Front | 4 |
| 89681 | 7289000621 | HEINEKEN 0.0 NEAR BEER 6/12... | ABOVE PREMIUM | 1 | Front | 4 |
| 11298 | 7289000011 | HEINEKEN 6/12 BTL | ABOVE PREMIUM | 1 | Front | 4 |
| 15442 | 8066095765 | MODELO ESPECIAL 6/12 BTL | ABOVE PREMIUM | 1 | Front | 3 |
| 15408 | 8066095625 | CORONA LIGHT 6/12 BTL | ABOVE PREMIUM | 1 | Front | 4 |
| 15406 | 8066095621 | CORONA LIGHT 12/12 CAN | ABOVE PREMIUM | 1 | Top 90 | 3 |
| 15400 | 8066095605 | CORONA 6/12 BTL | ABOVE PREMIUM | 1 | Front | 4 |
| 15426 | 8066095695 | CORONA 12/12 CAN | ABOVE PREMIUM | 1 | Side 90 | 4 |
| 88312 | 63848900196 | DOGFISH HEAD SEA QUENCH ... | ABOVE PREMIUM | 1 | Side 90 | 4 |
| 21995 | 8769230050 | SAMUEL ADAMS SEASONAL 6/... | ABOVE PREMIUM | 1 | Front | 4 |
| 13009 | 75452700022 | NEW BELGIUM FAT TIRE 6/12 B... | ABOVE PREMIUM | 1 | Front | 4 |
| 48655 | 85961200129 | 21ST AMENDMENT VARIETY PA... | ABOVE PREMIUM | 1 | Side 90 | 4 |
| 99754 | 7199009592 | BLUE MOON LIGHT SKY 12/12 ... | ABOVE PREMIUM | 1 | Top 90 | 3 |
| 10180 | 7199009511 | BLUE MOON BELGIAN WHITE 6... | ABOVE PREMIUM | 1 | Front | 4 |
| 107008 | 72383010612 | LAGUNITAS HAZY MEMORY 6/1... | ABOVE PREMIUM | 1 | Front | 4 |
| 3492 | 3410051605 | LEINIES SEASONAL PRIMARY 6... | ABOVE PREMIUM | 1 | Front | 4 |
| 14141 | 78624311990 | FLYING DOG RAGING BITCH 6/... | ABOVE PREMIUM | 1 | Front | 4 |

SHOPRITE_241

Store # 241

| | | | | | | |
|--------|-------------|--------------------------------|---------------|---|---------|----|
| 90228 | 86036700072 | SLOOP JUICE BOMB IPA 6/12 C... | ABOVE PREMIUM | 1 | Front | 8 |
| 75140 | 81760601081 | CAPTAIN LAWRENCE SEASON... | ABOVE PREMIUM | 1 | Side | 4 |
| 138 | 0945001150 | SARANAC IPA 6/12 BTL | ABOVE PREMIUM | 1 | Front | 4 |
| 52632 | 86326700005 | NEWBURGH MEGA BOSS 4/16 ... | ABOVE PREMIUM | 1 | Front | 4 |
| 1345 | 1820013986 | SHOCK TOP BELGIAN WHITE 6/... | ABOVE PREMIUM | 1 | Front | 4 |
| 65024 | 1820020082 | MICHELOB ULTRA PURE GOLD... | ABOVE PREMIUM | 1 | Front | 4 |
| 1227 | 1820005989 | MICHELOB ULTRA 6/12 BTL | ABOVE PREMIUM | 1 | Front | 4 |
| 86792 | 85777500729 | SAINT ARCHER GOLD 12/12 CAN | ABOVE PREMIUM | 1 | Top 90 | 3 |
| 107322 | 1820020209 | BUD LIGHT LEMONADE 12/12 C... | ABOVE PREMIUM | 1 | Top 90 | 3 |
| 104747 | 1820020210 | BUD LIGHT PEELS VARIETY 12/... | ABOVE PREMIUM | 1 | Top 90 | 3 |
| 73080 | 8992433481 | YUENGLING GOLDEN PILSNER ... | PREMIUM | 1 | Side 90 | 4 |
| 23900 | 8992427891 | YUENGLING LAGER 6/12 BTL | PREMIUM | 1 | Front | 4 |
| 23903 | 8992427898 | YUENGLING LAGER 12/12 CAN | PREMIUM | 1 | Top | 4 |
| 10155 | 7199000008 | COORS LIGHT 6/12 CAN | PREMIUM | 1 | Front | 8 |
| 10322 | 7199030005 | COORS LIGHT 6/12 BTL | PREMIUM | 1 | Front | 4 |
| 107283 | 7199070028 | COORS LIGHT 12/12 CAN (SLE... | PREMIUM | 3 | Top 90 | 9 |
| 10163 | 7199000047 | COORS BANQUET 12/12 CAN | PREMIUM | 1 | Top | 4 |
| 3579 | 3410057636 | LITE 12/12 CAN | PREMIUM | 1 | Side 90 | 4 |
| 1083 | 1820000833 | BUD LIGHT 6/12 BTL | PREMIUM | 1 | Front | 4 |
| 1659 | 1820053047 | BUD LIGHT 12/12 CAN | PREMIUM | 1 | Side 90 | 4 |
| 1084 | 1820000834 | BUD 6/12 BTL | PREMIUM | 1 | Front | 4 |
| 1297 | 1820011047 | BUD 12/12 CAN | PREMIUM | 1 | Side 90 | 4 |
| 16707 | 8248812700 | BECKS NEAR BEER 6/12 BTL | NA BEER | 1 | Front | 4 |
| 16707 | 8248812700 | BECKS NEAR BEER 6/12 BTL | NA BEER | 1 | Side | 2 |
| 4263 | 4257205715 | CLAUSTHALER PREMIUM 6/12 ... | ABOVE PREMIUM | 1 | Front | 4 |
| 1065 | 1820000784 | ODOULS NEAR BEER 6/12 BTL | NA BEER | 1 | Front | 4 |
| 63674 | 63598526038 | WHITE CLAW BLACK CHERRY ... | ABOVE PREMIUM | 2 | Front | 16 |
| 97015 | 63598526039 | WHITE CLAW MANGO 1/19.2 CAN | ABOVE PREMIUM | 2 | Front | 16 |
| 106350 | 8769201014 | TRULY LEMONADE 1/24 CAN | ABOVE PREMIUM | 2 | Front | 14 |
| 6470 | 63598524985 | MIKES HARDER CRANBERRY L... | ABOVE PREMIUM | 2 | Front | 14 |
| 6462 | 63598524583 | MIKES HARDER LEMONADE 1/... | ABOVE PREMIUM | 2 | Front | 14 |
| 56771 | 7031001483 | SEAGRAMS ESCAPES SPIKED ... | ABOVE PREMIUM | 2 | Front | 14 |
| 1565 | 1820025538 | BUD LIGHT LIME SEASONAL RI... | ABOVE PREMIUM | 2 | Front | 14 |
| 66064 | 61300874829 | ARNOLD PALMER SPIKED HAL... | ABOVE PREMIUM | 2 | Front | 14 |
| 22099 | 8769283231 | TWISTED TEA ORIGINAL 1/24 C... | ABOVE PREMIUM | 2 | Front | 14 |
| 22077 | 8769275231 | TWISTED TEA HALF AND HALF... | ABOVE PREMIUM | 2 | Front | 14 |
| 9452 | 7089701331 | FOSTERS 1/25.4 CAN | ABOVE PREMIUM | 2 | Front | 12 |
| 9488 | 7089718331 | FOSTERS PREMIUM 1/25.4 CAN | ABOVE PREMIUM | 2 | Front | 12 |

| Name: 11_14 | | W:48.00 in | D:22.00 in | Avail Space: 2.26 in | Ht Space: 9.00 in | | |
|-------------|------------|------------------------------|------------|----------------------|-------------------|-------|--|
| ID | UPC | Name | Category | HFacings | Orientation | Units | |
| 13978 | 7825000605 | STEEL RESERVE ALLOY BLK B... | ECONOMY | 2 | Front | 14 | |
| 13877 | 7825000328 | STEEL RESERVE 211 1/24 CAN | ECONOMY | 2 | Front | 14 | |
| 10436 | 7199048024 | KEYSTONE LIGHT 1/24 CAN | ECONOMY | 2 | Front | 14 | |
| 10412 | 7199047712 | KEYSTONE ICE 1/24 CAN | ECONOMY | 2 | Front | 14 | |
| 1522 | 1820025002 | NATURAL LIGHT 1/25 CAN | ECONOMY | 2 | Front | 14 | |
| 1533 | 1820025013 | NATTY DADDY 1/25 CAN | ECONOMY | 4 | Front | 28 | |
| 1528 | 1820025008 | NATURAL ICE 1/25 CAN | ECONOMY | 2 | Front | 14 | |

SHOPRITE_241

Store # 241

Shop Rite Assortment Worksheet

Name: 241_44ft_OPEN_COLD