



# SHOPRITE\_272

# Store # 272

Cooler Size: WAKEFERN FOOD CORP/HQ

Address: 125 DOLSON AVE

MIDDLETOWN, NY



|              |             |         |          |         |                  |
|--------------|-------------|---------|----------|---------|------------------|
| SHOPRITE_272 | Store # 272 | H: 6 ft | W: 12 ft | D: 2 ft | # of segments: 3 |
|--------------|-------------|---------|----------|---------|------------------|

| Name: 1_1 |             | W:96.00 in                        | D:21.00 in    | Avail Space: 3.44 in |             | Ht Space: 13.00 in |
|-----------|-------------|-----------------------------------|---------------|----------------------|-------------|--------------------|
| ID        | UPC         | Name                              | Category      | HFacings             | Orientation | Units              |
| 106991    | 8200079257  | SMIRNOFF SPIKED SPARKLING ...     | ABOVE PREMIUM | 1                    | Top 90      | 3                  |
| 103183    | 85389700251 | BON AND VIV SPIKED SELTZER ...    | ABOVE PREMIUM | 1                    | Top         | 4                  |
| 104729    | 3354400021  | MODELO ESPECIAL 24/ 7 BTL         | ABOVE PREMIUM | 1                    | Front       | 2                  |
| 11312     | 7289000043  | HEINEKEN 24/ 7 BTL                | ABOVE PREMIUM | 1                    | Front       | 2                  |
| 21853     | 8769200105  | SAMUEL ADAMS BOSTON LAGE...       | ABOVE PREMIUM | 1                    | Side 90     | 4                  |
| 59698     | 64286090005 | FOUNDERS CENTENNIAL IPA 15...     | ABOVE PREMIUM | 1                    | Top         | 4                  |
| 45618     | 64286090025 | FOUNDERS SEASONAL 15/ 12 C...     | ABOVE PREMIUM | 1                    | Top         | 4                  |
| 54416     | 79837330085 | MAGIC HAT IPA PLATLIST 15/ 12 ... | ABOVE PREMIUM | 1                    | Top         | 4                  |

| Name: 1_2 |             | W:96.00 in                      | D:21.00 in    | Avail Space: 2.74 in |             | Ht Space: 10.00 in |
|-----------|-------------|---------------------------------|---------------|----------------------|-------------|--------------------|
| ID        | UPC         | Name                            | Category      | HFacings             | Orientation | Units              |
| 65035     | 8769200686  | TRULY VARIETY BERRY 12/ 12 C... | ABOVE PREMIUM | 1                    | Top 90      | 3                  |
| 15832     | 81582901006 | CAYMAN JACK MARGARITA 6/ 11...  | ABOVE PREMIUM | 1                    | Front       | 3                  |
| 21934     | 8769200378  | TWISTED TEA VARIETY PACK 1...   | ABOVE PREMIUM | 1                    | Side 90     | 4                  |
| 11384     | 7289010016  | AMSTEL LIGHT 12/ 12 BTL         | ABOVE PREMIUM | 1                    | Side        | 2                  |
| 88312     | 63848900196 | DOGFISH HEAD SEA QUENCH A...    | ABOVE PREMIUM | 1                    | Front       | 4                  |
| 85046     | 8769200788  | SAMUEL ADAMS NEW ENGLAN...      | ABOVE PREMIUM | 1                    | Front       | 4                  |
| 85112     | 68174500145 | BLUE POINT SEASONAL 18/ 12 C... | ABOVE PREMIUM | 1                    | Top         | 4                  |
| 92008     | 68174500210 | BLUE POINT SHORE THING 18/ ...  | ABOVE PREMIUM | 1                    | Top         | 4                  |
| 90200     | 7167009298  | SARANAC 100 IPA 12/ 12 CAN      | ABOVE PREMIUM | 1                    | Front       | 4                  |

| Name: 1_3 |             | W:96.00 in                      | D:21.00 in    | Avail Space: 2.57 in |             | Ht Space: 11.00 in |
|-----------|-------------|---------------------------------|---------------|----------------------|-------------|--------------------|
| ID        | UPC         | Name                            | Category      | HFacings             | Orientation | Units              |
| 101521    | 8769200965  | TRULY PINEAPPLE 6/ 12 CAN       | ABOVE PREMIUM | 1                    | Top         | 6                  |
| 107421    | 1820020194  | RITAS FIZZ VARIETY 12/ 12 CAN   | ABOVE PREMIUM | 1                    | Top 90      | 3                  |
| 6515      | 63598526001 | MIKES HARD VARIETY PACK 12/ ... | ABOVE PREMIUM | 1                    | Top         | 4                  |
| 96463     | 63848900363 | DOGFISH HEAD SLIGHTLY MIGH...   | ABOVE PREMIUM | 1                    | Top         | 4                  |
| 107123    | 63848900247 | DOGFISH HEAD AMERICAN BEA...    | ABOVE PREMIUM | 1                    | Front       | 8                  |
| 10872     | 72383010012 | LAGUNITAS LITTLE SUMPIN 12/ ... | ABOVE PREMIUM | 1                    | Front       | 2                  |
| 21249     | 85961200113 | 21ST AMENDMENT SEASONAL ...     | ABOVE PREMIUM | 1                    | Top         | 4                  |
| 92006     | 68174500215 | BLUE POINT THE IPA 6/ 12 CAN    | ABOVE PREMIUM | 1                    | Front       | 8                  |
| 101387    | 81760601082 | CAPTAIN LAWRENCE COOKIE O'...   | ABOVE PREMIUM | 1                    | Front       | 4                  |
| 1376      | 1820015981  | SHOCK TOP BELGIAN WHITE 12...   | ABOVE PREMIUM | 1                    | Front       | 2                  |
| 107121    | 8992477013  | YUENGLING FLIGHT 12/ 12 BTL     | PREMIUM       | 1                    | Side        | 2                  |

| Name: 1_4 |             | W:96.00 in                       | D:21.00 in    | Avail Space: 5.45 in |             | Ht Space: 9.75 in |
|-----------|-------------|----------------------------------|---------------|----------------------|-------------|-------------------|
| ID        | UPC         | Name                             | Category      | HFacings             | Orientation | Units             |
| 104273    | 8769200989  | TRULY WATERMELON KIWI 6/1...     | ABOVE PREMIUM | 1                    | Top         | 6                 |
| 1498      | 1820022992  | BUD LIGHT LIME SEASONAL RIT...   | ABOVE PREMIUM | 1                    | Side 90     | 4                 |
| 100034    | 1820020217  | BUD LIGHT SELTZER STRAWBE...     | ABOVE PREMIUM | 1                    | Top 90      | 3                 |
| 6444      | 63598522413 | MIKES HARD STRAWBERRY LE...      | ABOVE PREMIUM | 1                    | Front       | 4                 |
| 61673     | 63848900312 | DOGFISH HEAD 90 MINUTE IMP...    | ABOVE PREMIUM | 1                    | Front       | 4                 |
| 6748      | 63848900029 | DOGFISH HEAD 60 MINUTE IPA ...   | ABOVE PREMIUM | 1                    | Front       | 4                 |
| 10192     | 7199009536  | BLUE MOON SEASONAL 12/ 12 B...   | ABOVE PREMIUM | 1                    | Front       | 2                 |
| 103267    | 72383001406 | LAGUNITAS LITTLE SUMPIN 6/ 1...  | ABOVE PREMIUM | 1                    | Front       | 8                 |
| 104251    | 81790400791 | ELYSIAN CONTACT HAZE IPA 6/ ...  | ABOVE PREMIUM | 1                    | Front       | 8                 |
| 107053    | 60690512207 | ITHACA EVERY DAY HAZE 8/ 16 ...  | ABOVE PREMIUM | 1                    | Front       | 3                 |
| 103864    | 85224700800 | MONTAUK JUICY IPA 6/ 12 CAN      | ABOVE PREMIUM | 1                    | Side        | 4                 |
| 89683     | 7289000620  | HEINEKEN 0.0 NEAR BEER 6/ 12 ... | ABOVE PREMIUM | 1                    | Front       | 4                 |

| Name: 1_5 |     | W:96.00 in | D:21.00 in | Avail Space: 0.83 in |             | Ht Space: 10.00 in |
|-----------|-----|------------|------------|----------------------|-------------|--------------------|
| ID        | UPC | Name       | Category   | HFacings             | Orientation | Units              |

# SHOPRITE\_272

# Store # 272

Cooler Size: WAKEFERN FOOD CORP/HQ

Address: 125 DOLSON AVE

MIDDLETOWN, NY

|        |             |                                 |               |   |         |   |
|--------|-------------|---------------------------------|---------------|---|---------|---|
| 104752 | 63598500021 | WHITE CLAW 70 PINEAPPLE 6/1...  | ABOVE PREMIUM | 1 | Top     | 6 |
| 1497   | 1820022989  | BUD LIGHT LIME MANG-O-RITA ...  | ABOVE PREMIUM | 1 | Side 90 | 4 |
| 6535   | 63598560611 | MIKES HARD CRANBERRY PAS...     | ABOVE PREMIUM | 1 | Front   | 4 |
| 84117  | 89413700268 | CRISPIN VARIETY PACK 12/12 C... | ABOVE PREMIUM | 1 | Top 90  | 3 |
| 46558  | 63848900188 | DOGFISH HEAD SEASONAL C 6/...   | ABOVE PREMIUM | 1 | Front   | 4 |
| 99757  | 7199009591  | BLUE MOON LIGHT SKY 6/12 CAN    | ABOVE PREMIUM | 1 | Top     | 6 |
| 107008 | 72383010612 | LAGUNITAS HAZY MEMORY 6/1...    | ABOVE PREMIUM | 1 | Front   | 4 |
| 104227 | 3410001533  | LEINIES SPRITZEN VARIETY 12/... | ABOVE PREMIUM | 1 | Front   | 3 |
| 69872  | 60690500870 | ITHACA FLOWER POWER 4/16 ...    | ABOVE PREMIUM | 1 | Front   | 4 |
| 107122 | 3061300051  | BROOKLYN SEASONAL 6/12 CAN      | ABOVE PREMIUM | 1 | Front   | 8 |
| 108004 | 3061304066  | BROOKLYN SPECIAL EFFECTS 6...   | ABOVE PREMIUM | 1 | Front   | 8 |
| 105972 | 1820020202  | BUDWEISER NITRO GOLD 6/12 ...   | PREMIUM       | 1 | Front   | 8 |
| 4263   | 4257205715  | CLAUSTHALER PREMIUM 6/12 ...    | ABOVE PREMIUM | 1 | Front   | 4 |



| Name: 1_6 |             | W:96.00 in                    | D:21.00 in    | Avail Space: 2.98 in |             | Ht Space: 12.25 in |
|-----------|-------------|-------------------------------|---------------|----------------------|-------------|--------------------|
| ID        | UPC         | Name                          | Category      | HFacings             | Orientation | Units              |
| 107003    | 63598500019 | WHITE CLAW 70 CLEMENTINE 6... | ABOVE PREMIUM | 1                    | Top         | 6                  |
| 79757     | 3410098959  | HENRYS HARD SPARKLING VA...   | ABOVE PREMIUM | 1                    | Side 90     | 6                  |
| 21939     | 8769200433  | ANGRY ORCHARD EASY APPLE ...  | ABOVE PREMIUM | 1                    | Front       | 4                  |
| 21843     | 8769200083  | ANGRY ORCHARD CRISP APPLE...  | ABOVE PREMIUM | 1                    | Top 90      | 3                  |
| 87945     | 75452700994 | NEW BELGIUM VOODOO ROTAT...   | ABOVE PREMIUM | 1                    | Side        | 4                  |
| 89769     | 75452700991 | NEW BELGIUM VOODOO RANG...    | ABOVE PREMIUM | 1                    | Top 90      | 2                  |
| 106603    | 75452701070 | NEW BELGIUM VOODOO RANG...    | ABOVE PREMIUM | 1                    | Top 90      | 2                  |
| 4172      | 4182700206  | HARPOON SEASONAL 6/12 BTL     | ABOVE PREMIUM | 1                    | Front       | 4                  |
| 75138     | 81760601076 | CAPTAIN LAWRENCE HOP COM...   | ABOVE PREMIUM | 1                    | Side        | 4                  |
| 103006    | 85856800424 | TWIN EAGLE TROUT 4/16 CAN     | ABOVE PREMIUM | 1                    | Front       | 4                  |
| 108126    | 85155900710 | MILLHOUSE PK PALE 4/16 CAN    | ABOVE PREMIUM | 1                    | Front       | 4                  |
| 107775    | 64286013005 | FOUNDERS CENTENNIAL IPA 1/... | ABOVE PREMIUM | 1                    | Front       | 8                  |
| 54323     | 72383019247 | LAGUNITAS 12TH OF NEVER AL... | ABOVE PREMIUM | 1                    | Front       | 8                  |
| 68136     | 72383019245 | LAGUNITAS SUMPIN EASY 1/19... | ABOVE PREMIUM | 1                    | Front       | 8                  |
| 73069     | 63625174211 | STONE IPA 1/19.2 CAN          | ABOVE PREMIUM | 1                    | Front       | 8                  |
| 15431     | 8066095721  | MODELO ESPECIAL 1/24 CAN      | ABOVE PREMIUM | 1                    | Front       | 7                  |
| 106350    | 8769201014  | TRULY LEMONADE 1/24 CAN       | ABOVE PREMIUM | 1                    | Front       | 7                  |
| 105971    | 1820026067  | BUD LIGHT LEMONADE 1/25 CAN   | PREMIUM       | 1                    | Front       | 7                  |
| 98777     | 61300875404 | ARNOLD PALMER SPIKED ICED ... | ABOVE PREMIUM | 1                    | Front       | 7                  |
| 98779     | 61300875407 | ARNOLD PALMER SPIKED LEMO...  | ABOVE PREMIUM | 2                    | Front       | 14                 |

Cooler Size: WAKEFERN FOOD CORP/HQ

Address: 125 DOLSON AVE

MIDDLETOWN, NY



Bottled Wine

Bottled Wine

Bottled Wine

Bottled Wine



4 ft

|              |             |         |          |         |                  |
|--------------|-------------|---------|----------|---------|------------------|
| SHOPRITE_272 | Store # 272 | H: 6 ft | W: 12 ft | D: 2 ft | # of segments: 3 |
|--------------|-------------|---------|----------|---------|------------------|

| Name: 3_7 |             | W:48.00 in                    | D:22.00 in    | Avail Space: 0.86 in |             | Ht Space: 13.00 in |  |
|-----------|-------------|-------------------------------|---------------|----------------------|-------------|--------------------|--|
| ID        | UPC         | Name                          | Category      | HFacings             | Orientation | Units              |  |
| 29616     | 86681600000 | AWESTRUCK HIBISCUS GINGER...  | ABOVE PREMIUM | 1                    | Front       | 6                  |  |
| 7295      | 65379200930 | DOCS DRAFT ORIGINAL 1/22 BTL  | ABOVE PREMIUM | 1                    | Front       | 7                  |  |
| 7294      | 65379200502 | DOCS DRAFT PEAR 1/22 BTL      | ABOVE PREMIUM | 2                    | Front       | 14                 |  |
| 7293      | 65379200318 | DOCS DRAFT RASPBERRY 1/22 ... | ABOVE PREMIUM | 1                    | Front       | 7                  |  |
| 6566      | 63625178000 | ARROGANT BASTARD ALE 1/22 ... | ABOVE PREMIUM | 1                    | Front       | 7                  |  |
| 10838     | 72383000001 | LAGUNITAS HOP STOOD 1/22 B... | ABOVE PREMIUM | 2                    | Front       | 14                 |  |
| 10841     | 72383000004 | LAGUNITAS IPA 1/22 BTL        | ABOVE PREMIUM | 2                    | Front       | 14                 |  |
| 7174      | 64944000004 | OMMEGANG THREE PHILOSOP...    | ABOVE PREMIUM | 1                    | Front       | 7                  |  |
| 7173      | 64944000003 | OMMEGANG HENNEPIN FRAMH...    | ABOVE PREMIUM | 1                    | Front       | 7                  |  |
| 7171      | 64944000001 | OMMEGANG ABBEY ALE 1/25.4 ... | ABOVE PREMIUM | 1                    | Front       | 7                  |  |
| 15910     | 81706000007 | CHIMAY BLUE GRAND RESERV...   | ABOVE PREMIUM | 1                    | Front       | 7                  |  |
| 12901     | 75224511150 | WEIHENSTEPHAN HEFE WEISS...   | ABOVE PREMIUM | 2                    | Front       | 16                 |  |

|           |            |            |                       |                    |
|-----------|------------|------------|-----------------------|--------------------|
| Name: 3_8 | W:48.00 in | D:22.00 in | Avail Space: 48.00 in | Ht Space: 13.00 in |
|-----------|------------|------------|-----------------------|--------------------|

|           |            |            |                       |                    |
|-----------|------------|------------|-----------------------|--------------------|
| Name: 3_9 | W:48.00 in | D:22.00 in | Avail Space: 48.00 in | Ht Space: 10.00 in |
|-----------|------------|------------|-----------------------|--------------------|

|            |            |            |                       |                    |
|------------|------------|------------|-----------------------|--------------------|
| Name: 3_10 | W:48.00 in | D:22.00 in | Avail Space: 48.00 in | Ht Space: 10.00 in |
|------------|------------|------------|-----------------------|--------------------|

|            |            |            |                       |                    |
|------------|------------|------------|-----------------------|--------------------|
| Name: 3_11 | W:48.00 in | D:22.00 in | Avail Space: 48.00 in | Ht Space: 10.00 in |
|------------|------------|------------|-----------------------|--------------------|

| Name: 3_12 |            | W:48.00 in                   | D:22.00 in    | Avail Space: 35.25 in |             | Ht Space: 10.00 in |  |
|------------|------------|------------------------------|---------------|-----------------------|-------------|--------------------|--|
| ID         | UPC        | Name                         | Category      | HFacings              | Orientation | Units              |  |
| 103537     | 3410001218 | MOVO PEACH WHITE BLEND 4/... | OTHER ALCOHOL | 1                     | Front       | 10                 |  |
| 103536     | 3410001217 | MOVO RASPBERRY ROSE 4/8....  | OTHER ALCOHOL | 1                     | Front       | 10                 |  |
| 103538     | 3410001222 | MOVO VARIETY PACK 4/8.4 CAN  | OTHER ALCOHOL | 1                     | Front       | 10                 |  |

# SHOPRITE\_272

Store # 272

SHOPRITE\_272 Store # 272 H: 6 ft W: 12 ft D: 2 ft # of segments: 3

| Name: 1_1 |             | W:96.00 in                      | D:21.00 in    | Avail Space: 3.44 in | Ht Space: 13.00 in |       |
|-----------|-------------|---------------------------------|---------------|----------------------|--------------------|-------|
| ID        | UPC         | Name                            | Category      | HFacings             | Orientation        | Units |
| 106991    | 8200079257  | SMIRNOFF SPIKED SPARKLING...    | ABOVE PREMIUM | 1                    | Top 90             | 3     |
| 103183    | 85389700251 | BON AND VIV SPIKED SELTZER...   | ABOVE PREMIUM | 1                    | Top                | 4     |
| 104729    | 3354400021  | MODELO ESPECIAL 24/7 BTL        | ABOVE PREMIUM | 1                    | Front              | 2     |
| 11312     | 7289000043  | HEINEKEN 24/7 BTL               | ABOVE PREMIUM | 1                    | Front              | 2     |
| 21853     | 8769200105  | SAMUEL ADAMS BOSTON LAG...      | ABOVE PREMIUM | 1                    | Side 90            | 4     |
| 59698     | 64286090005 | FOUNDERS CENTENNIAL IPA 1...    | ABOVE PREMIUM | 1                    | Top                | 4     |
| 45618     | 64286090025 | FOUNDERS SEASONAL 15/12 C...    | ABOVE PREMIUM | 1                    | Top                | 4     |
| 54416     | 79837330085 | MAGIC HAT IPA PLATLIST 15/12... | ABOVE PREMIUM | 1                    | Top                | 4     |

| Name: 1_2 |             | W:96.00 in                     | D:21.00 in    | Avail Space: 2.74 in | Ht Space: 10.00 in |       |
|-----------|-------------|--------------------------------|---------------|----------------------|--------------------|-------|
| ID        | UPC         | Name                           | Category      | HFacings             | Orientation        | Units |
| 65035     | 8769200686  | TRULY VARIETY BERRY 12/12 C... | ABOVE PREMIUM | 1                    | Top 90             | 3     |
| 15832     | 81582901006 | CAYMAN JACK MARGARITA 6/1...   | ABOVE PREMIUM | 1                    | Front              | 3     |
| 21934     | 8769200378  | TWISTED TEA VARIETY PACK 1...  | ABOVE PREMIUM | 1                    | Side 90            | 4     |
| 11384     | 7289010016  | AMSTEL LIGHT 12/12 BTL         | ABOVE PREMIUM | 1                    | Side               | 2     |
| 88312     | 63848900196 | DOGFISH HEAD SEA QUENCH ...    | ABOVE PREMIUM | 1                    | Front              | 4     |
| 85046     | 8769200788  | SAMUEL ADAMS NEW ENGLAN...     | ABOVE PREMIUM | 1                    | Front              | 4     |
| 85112     | 68174500145 | BLUE POINT SEASONAL 18/12 ...  | ABOVE PREMIUM | 1                    | Top                | 4     |
| 92008     | 68174500210 | BLUE POINT SHORE THING 18/...  | ABOVE PREMIUM | 1                    | Top                | 4     |
| 90200     | 7167009298  | SARANAC 100 IPA 12/12 CAN      | ABOVE PREMIUM | 1                    | Front              | 4     |

| Name: 1_3 |             | W:96.00 in                     | D:21.00 in    | Avail Space: 2.57 in | Ht Space: 11.00 in |       |
|-----------|-------------|--------------------------------|---------------|----------------------|--------------------|-------|
| ID        | UPC         | Name                           | Category      | HFacings             | Orientation        | Units |
| 101521    | 8769200965  | TRULY PINEAPPLE 6/12 CAN       | ABOVE PREMIUM | 1                    | Top                | 6     |
| 107421    | 1820020194  | RITAS FIZZ VARIETY 12/12 CAN   | ABOVE PREMIUM | 1                    | Top 90             | 3     |
| 6515      | 63598526001 | MIKES HARD VARIETY PACK 12...  | ABOVE PREMIUM | 1                    | Top                | 4     |
| 96463     | 63848900363 | DOGFISH HEAD SLIGHTLY MIG...   | ABOVE PREMIUM | 1                    | Top                | 4     |
| 107123    | 63848900247 | DOGFISH HEAD AMERICAN BE...    | ABOVE PREMIUM | 1                    | Front              | 8     |
| 10872     | 72383010012 | LAGUNITAS LITTLE SUMPIN 12/... | ABOVE PREMIUM | 1                    | Front              | 2     |
| 21249     | 85961200113 | 21ST AMENDMENT SEASONAL ...    | ABOVE PREMIUM | 1                    | Top                | 4     |
| 92006     | 68174500215 | BLUE POINT THE IPA 6/12 CAN    | ABOVE PREMIUM | 1                    | Front              | 8     |
| 101387    | 81760601082 | CAPTAIN LAWRENCE COOKIE ...    | ABOVE PREMIUM | 1                    | Front              | 4     |
| 1376      | 1820015981  | SHOCK TOP BELGIAN WHITE 1...   | ABOVE PREMIUM | 1                    | Front              | 2     |
| 107121    | 8992477013  | YUENGLING FLIGHT 12/12 BTL     | PREMIUM       | 1                    | Side               | 2     |

| Name: 1_4 |             | W:96.00 in                     | D:21.00 in    | Avail Space: 5.45 in | Ht Space: 9.75 in |       |
|-----------|-------------|--------------------------------|---------------|----------------------|-------------------|-------|
| ID        | UPC         | Name                           | Category      | HFacings             | Orientation       | Units |
| 104273    | 8769200989  | TRULY WATERMELON KIWI 6/1...   | ABOVE PREMIUM | 1                    | Top               | 6     |
| 1498      | 1820022992  | BUD LIGHT LIME SEASONAL RI...  | ABOVE PREMIUM | 1                    | Side 90           | 4     |
| 100034    | 1820020217  | BUD LIGHT SELTZER STRAWB...    | ABOVE PREMIUM | 1                    | Top 90            | 3     |
| 6444      | 63598522413 | MIKES HARD STRAWBERRY LE...    | ABOVE PREMIUM | 1                    | Front             | 4     |
| 61673     | 63848900312 | DOGFISH HEAD 90 MINUTE IMP...  | ABOVE PREMIUM | 1                    | Front             | 4     |
| 6748      | 63848900029 | DOGFISH HEAD 60 MINUTE IPA...  | ABOVE PREMIUM | 1                    | Front             | 4     |
| 10192     | 7199009536  | BLUE MOON SEASONAL 12/12 ...   | ABOVE PREMIUM | 1                    | Front             | 2     |
| 103267    | 72383001406 | LAGUNITAS LITTLE SUMPIN 6/1... | ABOVE PREMIUM | 1                    | Front             | 8     |
| 104251    | 81790400791 | ELYSIAN CONTACT HAZE IPA 6/... | ABOVE PREMIUM | 1                    | Front             | 8     |
| 107053    | 60690512207 | ITHACA EVERY DAY HAZE 8/16 ... | ABOVE PREMIUM | 1                    | Front             | 3     |
| 103864    | 85224700800 | MONTAUK JUICY IPA 6/12 CAN     | ABOVE PREMIUM | 1                    | Side              | 4     |
| 89683     | 7289000620  | HEINEKEN 0.0 NEAR BEER 6/12... | ABOVE PREMIUM | 1                    | Front             | 4     |

| Name: 1_5 |             | W:96.00 in                    | D:21.00 in    | Avail Space: 0.83 in | Ht Space: 10.00 in |       |
|-----------|-------------|-------------------------------|---------------|----------------------|--------------------|-------|
| ID        | UPC         | Name                          | Category      | HFacings             | Orientation        | Units |
| 104752    | 63598500021 | WHITE CLAW 70 PINEAPPLE 6/... | ABOVE PREMIUM | 1                    | Top                | 6     |

# SHOPRITE\_272

Store # 272

|        |             |                                 |               |   |         |   |
|--------|-------------|---------------------------------|---------------|---|---------|---|
| 1497   | 1820022989  | BUD LIGHT LIME MANG-O-RITA...   | ABOVE PREMIUM | 1 | Side 90 | 4 |
| 6535   | 63598560611 | MIKES HARD CRANBERRY PAS...     | ABOVE PREMIUM | 1 | Front   | 4 |
| 84117  | 89413700268 | CRISPIN VARIETY PACK 12/12 C... | ABOVE PREMIUM | 1 | Top 90  | 3 |
| 46558  | 63848900188 | DOGFISH HEAD SEASONAL C ...     | ABOVE PREMIUM | 1 | Front   | 4 |
| 99757  | 7199009591  | BLUE MOON LIGHT SKY 6/12 C...   | ABOVE PREMIUM | 1 | Top     | 6 |
| 107008 | 72383010612 | LAGUNITAS HAZY MEMORY 6/1...    | ABOVE PREMIUM | 1 | Front   | 4 |
| 104227 | 3410001533  | LEINIES SPRITZEN VARIETY 12/... | ABOVE PREMIUM | 1 | Front   | 3 |
| 69872  | 60690500870 | ITHACA FLOWER POWER 4/16 ...    | ABOVE PREMIUM | 1 | Front   | 4 |
| 107122 | 3061300051  | BROOKLYN SEASONAL 6/12 CAN      | ABOVE PREMIUM | 1 | Front   | 8 |
| 108004 | 3061304066  | BROOKLYN SPECIAL EFFECTS ...    | ABOVE PREMIUM | 1 | Front   | 8 |
| 105972 | 1820020202  | BUDWEISER NITRO GOLD 6/12 ...   | PREMIUM       | 1 | Front   | 8 |
| 4263   | 4257205715  | CLAUSTHALER PREMIUM 6/12 ...    | ABOVE PREMIUM | 1 | Front   | 4 |

| Name: 1_6 |             | W:96.00 in                    | D:21.00 in    | Avail Space: 2.98 in | Ht Space: 12.25 in |       |
|-----------|-------------|-------------------------------|---------------|----------------------|--------------------|-------|
| ID        | UPC         | Name                          | Category      | HFacings             | Orientation        | Units |
| 107003    | 63598500019 | WHITE CLAW 70 CLEMENTINE ...  | ABOVE PREMIUM | 1                    | Top                | 6     |
| 79757     | 3410098959  | HENRYS HARD SPARKLING VA...   | ABOVE PREMIUM | 1                    | Side 90            | 6     |
| 21939     | 8769200433  | ANGRY ORCHARD EASY APPL...    | ABOVE PREMIUM | 1                    | Front              | 4     |
| 21843     | 8769200083  | ANGRY ORCHARD CRISP APPL...   | ABOVE PREMIUM | 1                    | Top 90             | 3     |
| 87945     | 75452700994 | NEW BELGIUM VOODOO ROTA...    | ABOVE PREMIUM | 1                    | Side               | 4     |
| 89769     | 75452700991 | NEW BELGIUM VOODOO RANG...    | ABOVE PREMIUM | 1                    | Top 90             | 2     |
| 106603    | 75452701070 | NEW BELGIUM VOODOO RANG...    | ABOVE PREMIUM | 1                    | Top 90             | 2     |
| 4172      | 4182700206  | HARPOON SEASONAL 6/12 BTL     | ABOVE PREMIUM | 1                    | Front              | 4     |
| 75138     | 81760601076 | CAPTAIN LAWRENCE HOP CO...    | ABOVE PREMIUM | 1                    | Side               | 4     |
| 103006    | 85856800424 | TWIN EAGLE TROUT 4/16 CAN     | ABOVE PREMIUM | 1                    | Front              | 4     |
| 108126    | 85155900710 | MILLHOUSE PK PALE 4/16 CAN    | ABOVE PREMIUM | 1                    | Front              | 4     |
| 107775    | 64286013005 | FOUNDERS CENTENNIAL IPA 1/... | ABOVE PREMIUM | 1                    | Front              | 8     |
| 54323     | 72383019247 | LAGUNITAS 12TH OF NEVER A...  | ABOVE PREMIUM | 1                    | Front              | 8     |
| 68136     | 72383019245 | LAGUNITAS SUMPIN EASY 1/19... | ABOVE PREMIUM | 1                    | Front              | 8     |
| 73069     | 63625174211 | STONE IPA 1/19.2 CAN          | ABOVE PREMIUM | 1                    | Front              | 8     |
| 15431     | 8066095721  | MODELO ESPECIAL 1/24 CAN      | ABOVE PREMIUM | 1                    | Front              | 7     |
| 106350    | 8769201014  | TRULY LEMONADE 1/24 CAN       | ABOVE PREMIUM | 1                    | Front              | 7     |
| 105971    | 1820026067  | BUD LIGHT LEMONADE 1/25 C...  | PREMIUM       | 1                    | Front              | 7     |
| 98777     | 61300875404 | ARNOLD PALMER SPIKED ICE...   | ABOVE PREMIUM | 1                    | Front              | 7     |
| 98779     | 61300875407 | ARNOLD PALMER SPIKED LEM...   | ABOVE PREMIUM | 2                    | Front              | 14    |

| Name: 3_7 |             | W:48.00 in                    | D:22.00 in    | Avail Space: 0.86 in | Ht Space: 13.00 in |       |
|-----------|-------------|-------------------------------|---------------|----------------------|--------------------|-------|
| ID        | UPC         | Name                          | Category      | HFacings             | Orientation        | Units |
| 29616     | 86681600000 | AWESTRUCK HIBISCUS GINGE...   | ABOVE PREMIUM | 1                    | Front              | 6     |
| 7295      | 65379200930 | DOCS DRAFT ORIGINAL 1/22 B... | ABOVE PREMIUM | 1                    | Front              | 7     |
| 7294      | 65379200502 | DOCS DRAFT PEAR 1/22 BTL      | ABOVE PREMIUM | 2                    | Front              | 14    |
| 7293      | 65379200318 | DOCS DRAFT RASPBERRY 1/22...  | ABOVE PREMIUM | 1                    | Front              | 7     |
| 6566      | 63625178000 | ARROGANT BASTARD ALE 1/22...  | ABOVE PREMIUM | 1                    | Front              | 7     |
| 10838     | 72383000001 | LAGUNITAS HOP STOOD 1/22 ...  | ABOVE PREMIUM | 2                    | Front              | 14    |
| 10841     | 72383000004 | LAGUNITAS IPA 1/22 BTL        | ABOVE PREMIUM | 2                    | Front              | 14    |
| 7174      | 64944000004 | OMMEGANG THREE PHILOSOP...    | ABOVE PREMIUM | 1                    | Front              | 7     |
| 7173      | 64944000003 | OMMEGANG HENNEPIN FRAM...     | ABOVE PREMIUM | 1                    | Front              | 7     |
| 7171      | 64944000001 | OMMEGANG ABBEY ALE 1/25.4 ... | ABOVE PREMIUM | 1                    | Front              | 7     |
| 15910     | 81706000007 | CHIMAY BLUE GRAND RESERV...   | ABOVE PREMIUM | 1                    | Front              | 7     |
| 12901     | 75224511150 | WEIHENSTEPHAN HEFE WEISS...   | ABOVE PREMIUM | 2                    | Front              | 16    |

Name: 3\_8      W:48.00 in      D:22.00 in      Avail Space: 48.00 in      Ht Space: 13.00 in

Name: 3\_9      W:48.00 in      D:22.00 in      Avail Space: 48.00 in      Ht Space: 10.00 in

Name: 3\_10      W:48.00 in      D:22.00 in      Avail Space: 48.00 in      Ht Space: 10.00 in

Name: 3\_11      W:48.00 in      D:22.00 in      Avail Space: 48.00 in      Ht Space: 10.00 in

# SHOPRITE\_272

Store # 272

| Name: 3_12 |            | W:48.00 in                   | D:22.00 in    | Avail Space: 35.25 in | Ht Space: 10.00 in |       |
|------------|------------|------------------------------|---------------|-----------------------|--------------------|-------|
| ID         | UPC        | Name                         | Category      | HFacings              | Orientation        | Units |
| 103537     | 3410001218 | MOVO PEACH WHITE BLEND 4/... | OTHER ALCOHOL | 1                     | Front              | 10    |
| 103536     | 3410001217 | MOVO RASPEBERRY ROSE 4/8.... | OTHER ALCOHOL | 1                     | Front              | 10    |
| 103538     | 3410001222 | MOVO VARIETY PACK 4/8.4 CAN  | OTHER ALCOHOL | 1                     | Front              | 10    |

**SHOPRITE\_272**

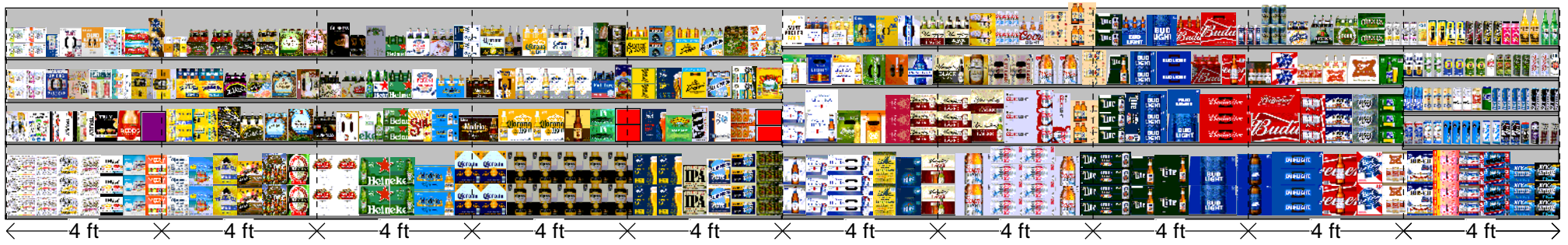
**Store # 272**

Shop Rite Assortment Worksheet

Name: 272\_12ft\_OPEN\_WARM



CALL CENTER/KEEPER/FOOD/CORRAID



# SHOPRITE\_272

# Store # 272

Cooler Size: WAKEFERN FOOD CORP/HQ

Address: 125 DOLSON AVE

MIDDLETOWN, NY



|              |             |                 |          |                 |                   |
|--------------|-------------|-----------------|----------|-----------------|-------------------|
| SHOPRITE_272 | Store # 272 | H: 5 ft 5.00 in | W: 40 ft | D: 2 ft 6.00 in | # of segments: 10 |
|--------------|-------------|-----------------|----------|-----------------|-------------------|

| Name: 3_1 |             | W:240.00 in                     | D:30.00 in    | Avail Space: 1.66 in |             | Ht Space: 22.00 in |
|-----------|-------------|---------------------------------|---------------|----------------------|-------------|--------------------|
| ID        | UPC         | Name                            | Category      | HFacings             | Orientation | Units              |
| 45151     | 63598554890 | WHITE CLAW VARIETY PACK 12...   | ABOVE PREMIUM | 1                    | Front       | 12                 |
| 45151     | 63598554890 | WHITE CLAW VARIETY PACK 12...   | ABOVE PREMIUM | 1                    | Side        | 9                  |
| 106595    | 63598580006 | WHITE CLAW VARIETY PACK 12...   | ABOVE PREMIUM | 1                    | Side        | 9                  |
| 83125     | 63598526089 | WHITE CLAW BLACK CHERRY 1...    | ABOVE PREMIUM | 1                    | Side        | 9                  |
| 87955     | 8769200804  | TRULY VARIETY TROPICAL 12/1...  | ABOVE PREMIUM | 1                    | Side        | 9                  |
| 105977    | 1820020208  | BUD LIGHT SELTZER VARIETY ...   | ABOVE PREMIUM | 1                    | Side        | 9                  |
| 105038    | 3410001232  | VIZZY VARIETY 12/ 12 CAN        | ABOVE PREMIUM | 1                    | Side        | 9                  |
| 104728    | 3354400043  | CORONA SELTZER VARIETY 12/ ...  | ABOVE PREMIUM | 1                    | Side        | 9                  |
| 15329     | 8043280290  | SEAGRAMS ESCAPES VARIETY ...    | ABOVE PREMIUM | 1                    | Side        | 6                  |
| 22093     | 8769283103  | TWISTED TEA ORIGINAL 12/ 12 ... | ABOVE PREMIUM | 1                    | Side        | 6                  |
| 6433      | 63598512998 | MIKES HARD VARIETY PACK 12/ ... | ABOVE PREMIUM | 1                    | Side        | 6                  |
| 21815     | 8769200017  | ANGRY ORCHARD EXPLORER P...     | ABOVE PREMIUM | 1                    | Side        | 6                  |
| 16691     | 8248812300  | BECKS 12/ 12 BTL                | ABOVE PREMIUM | 1                    | Side        | 6                  |

| Name: 3_2 |             | W:240.00 in                     | D:23.00 in    | Avail Space: 2.99 in |             | Ht Space: 12.00 in |
|-----------|-------------|---------------------------------|---------------|----------------------|-------------|--------------------|
| ID        | UPC         | Name                            | Category      | HFacings             | Orientation | Units              |
| 93496     | 63598510033 | WHITE CLAW MANGO 12/ 12 CAN     | ABOVE PREMIUM | 1                    | Top 90      | 3                  |
| 63326     | 3410051660  | HENRY'S HARD SPARKLING VA...    | ABOVE PREMIUM | 1                    | Top 90      | 3                  |
| 65035     | 8769200686  | TRULY VARIETY BERRY 12/ 12 C... | ABOVE PREMIUM | 1                    | Top 90      | 3                  |
| 43031     | 8769200424  | TRULY VARIETY CITRUS 12/ 12 ... | ABOVE PREMIUM | 1                    | Top 90      | 3                  |
| 104272    | 8769200991  | TRULY LEMONADE VARIETY 12...    | ABOVE PREMIUM | 1                    | Top 90      | 3                  |
| 3257      | 3410008722  | REDD'S 12/ 12 BTL               | ABOVE PREMIUM | 1                    | Side        | 2                  |
| 107115    | 7031001647  | SEAGRAMS ESCAPE ITALIAN IC...   | ABOVE PREMIUM | 1                    | Side        | 2                  |
| 22096     | 8769283134  | TWISTED TEA ORIGINAL 12/ 12 ... | ABOVE PREMIUM | 1                    | Side 90     | 4                  |
| 22076     | 8769275134  | TWISTED TEA HALF AND HALF ...   | ABOVE PREMIUM | 1                    | Side 90     | 4                  |
| 65025     | 63598526042 | MIKES HARDER VARIETY PACK ...   | ABOVE PREMIUM | 1                    | Side 90     | 4                  |
| 6413      | 63598510062 | MIKES HARD LEMONADE 6/ 11.2...  | ABOVE PREMIUM | 1                    | Front       | 4                  |
| 22090     | 8769282102  | ANGRY ORCHARD CRISP APPLE...    | ABOVE PREMIUM | 1                    | Front       | 4                  |
| 21823     | 8769200033  | ANGRY ORCHARD CRISP APPLE...    | ABOVE PREMIUM | 1                    | Side        | 2                  |

| Name: 3_3 |             | W:240.00 in                      | D:22.00 in    | Avail Space: 0.94 in |             | Ht Space: 12.00 in |
|-----------|-------------|----------------------------------|---------------|----------------------|-------------|--------------------|
| ID        | UPC         | Name                             | Category      | HFacings             | Orientation | Units              |
| 83884     | 63598526087 | WHITE CLAW MANGO 6/ 12 CAN       | ABOVE PREMIUM | 1                    | Side 90     | 6                  |
| 6441      | 63598520025 | WHITE CLAW BLACK CHERRY 6...     | ABOVE PREMIUM | 1                    | Side 90     | 6                  |
| 19178     | 85389700227 | BON AND VIV SPIKED SELTZER ...   | ABOVE PREMIUM | 1                    | Top 90      | 3                  |
| 45535     | 8200078142  | SMIRNOFF SPIKED SPARKLING ...    | ABOVE PREMIUM | 1                    | Top 90      | 3                  |
| 86788     | 3410051681  | CAPE LINE VARIETY PACK 12/ 12... | ABOVE PREMIUM | 1                    | Top 90      | 3                  |
| 86777     | 3354400013  | CORONA REFRESCA VARIETY 1...     | ABOVE PREMIUM | 3                    | Front 90    | 3                  |
| 107183    | 61300875550 | ARNOLD PALMER SPIKED LEMO...     | ABOVE PREMIUM | 1                    | Top 90      | 3                  |
| 68928     | 61300875220 | ARNOLD PALMER SPIKED HALF ...    | ABOVE PREMIUM | 1                    | Top 90      | 3                  |
| 22092     | 8769283102  | TWISTED TEA ORIGINAL 6/ 12 B...  | ABOVE PREMIUM | 1                    | Front       | 4                  |
| 22074     | 8769275102  | TWISTED TEA HALF AND HALF ...    | ABOVE PREMIUM | 1                    | Front       | 4                  |
| 6402      | 63598506744 | MIKES HARD BLACK CHERRY L...     | ABOVE PREMIUM | 1                    | Front       | 4                  |
| 6398      | 63598506074 | MIKES HARD SEASONAL 6/ 11.2 ...  | ABOVE PREMIUM | 1                    | Front       | 4                  |
| 99509     | 8769200838  | ANGRY ORCHARD UNFILTERED...      | ABOVE PREMIUM | 1                    | Front       | 4                  |
| 85041     | 8769200754  | ANGRY ORCHARD ROSE 12/ 12 ...    | ABOVE PREMIUM | 1                    | Top 90      | 3                  |

| Name: 3_4 |             | W:240.00 in                    | D:23.00 in    | Avail Space: 1.20 in |             | Ht Space: 15.00 in |
|-----------|-------------|--------------------------------|---------------|----------------------|-------------|--------------------|
| ID        | UPC         | Name                           | Category      | HFacings             | Orientation | Units              |
| 6380      | 63598502598 | WHITE CLAW NATURAL LIME 6/ ... | ABOVE PREMIUM | 1                    | Side 90     | 6                  |
| 6442      | 63598520028 | WHITE CLAW RUBY GRAPEFRU...    | ABOVE PREMIUM | 1                    | Side 90     | 6                  |
| 89831     | 1820028548  | BON AND VIV SPIKED SELTZER ... | ABOVE PREMIUM | 1                    | Top 90      | 3                  |

# SHOPRITE\_272

Store # 272

Cooler Size: WAKEFERN FOOD CORP/HQ

Address: 125 DOLSON AVE

MIDDLETOWN, NY

|        |             |                                |               |   |         |   |
|--------|-------------|--------------------------------|---------------|---|---------|---|
| 106983 | 1820020215  | BUD LIGHT SELTZER BLACK CH...  | ABOVE PREMIUM | 1 | Top 90  | 3 |
| 107855 | 1820020219  | BUD LIGHT SELTZER MANGO 1...   | ABOVE PREMIUM | 1 | Top 90  | 3 |
| 97735  | 4182770112  | ARCTIC SUMMER SPIKED VARIE...  | ABOVE PREMIUM | 1 | Top 90  | 3 |
| 1464   | 1820020993  | BUD LIGHT LIME STRAW-BER-R...  | ABOVE PREMIUM | 1 | Side 90 | 4 |
| 103099 | 2210005002  | PABST HARD COFFEE 4/ 11 CAN    | ABOVE PREMIUM | 1 | Front   | 8 |
| 65020  | 61300874833 | ARNOLD PALMER SPIKED HALF ...  | ABOVE PREMIUM | 1 | Front   | 5 |
| 16651  | 8218422601  | JACK DANIELS DOWNHOME PU...    | ABOVE PREMIUM | 1 | Front   | 4 |
| 16653  | 8218422603  | JACK DANIELS WATERMELON S...   | ABOVE PREMIUM | 1 | Front   | 4 |
| 16655  | 8218422605  | JACK DANIELS BLACK JACK COL... | ABOVE PREMIUM | 1 | Front   | 4 |
| 16652  | 8218422602  | JACK DANIELS LYNCHBURG LE...   | ABOVE PREMIUM | 1 | Front   | 4 |
| 21866  | 8769200149  | ANGRY ORCHARD GREEN APPL...    | ABOVE PREMIUM | 1 | Front   | 4 |
| 65019  | 8769200660  | ANGRY ORCHARD ROSE 6/ 12 B...  | ABOVE PREMIUM | 1 | Front   | 4 |



# SHOPRITE\_272

# Store # 272

Cooler Size: WAKEFERN FOOD CORP/HQ

Address: 125 DOLSON AVE

MIDDLETOWN, NY



|              |             |                 |          |                 |                   |
|--------------|-------------|-----------------|----------|-----------------|-------------------|
| SHOPRITE_272 | Store # 272 | H: 5 ft 5.00 in | W: 40 ft | D: 2 ft 6.00 in | # of segments: 10 |
|--------------|-------------|-----------------|----------|-----------------|-------------------|

| Name: 3_1 |             | W:240.00 in                | D:30.00 in    | Avail Space: 1.66 in |             | Ht Space: 22.00 in |
|-----------|-------------|----------------------------|---------------|----------------------|-------------|--------------------|
| ID        | UPC         | Name                       | Category      | HFacings             | Orientation | Units              |
| 14094     | 78615000014 | STELLA ARTOIS 12/ 11.2 BTL | ABOVE PREMIUM | 1                    | Side        | 6                  |
| 14094     | 78615000014 | STELLA ARTOIS 12/ 11.2 BTL | ABOVE PREMIUM | 1                    | Side        | 6                  |
| 11300     | 7289000016  | HEINEKEN 12/ 12 BTL        | ABOVE PREMIUM | 1                    | Front       | 8                  |
| 11300     | 7289000016  | HEINEKEN 12/ 12 BTL        | ABOVE PREMIUM | 1                    | Side        | 6                  |
| 15436     | 8066095757  | MODELO ESPECIAL 12/ 12 BTL | ABOVE PREMIUM | 1                    | Front       | 6                  |
| 15417     | 8066095680  | CORONA 18/ 12 BTL          | ABOVE PREMIUM | 2                    | Side        | 4                  |
| 15403     | 8066095615  | CORONA 12/ 12 BTL          | ABOVE PREMIUM | 5                    | Side        | 30                 |

| Name: 3_2 |             | W:240.00 in                   | D:23.00 in    | Avail Space: 2.99 in |             | Ht Space: 12.00 in |
|-----------|-------------|-------------------------------|---------------|----------------------|-------------|--------------------|
| ID        | UPC         | Name                          | Category      | HFacings             | Orientation | Units              |
| 17284     | 8382010401  | GUINNESS DRAUGHT STOUT 6/ ... | ABOVE PREMIUM | 1                    | Front       | 4                  |
| 14096     | 78615000016 | STELLA ARTOIS 12/ 11.2 CAN    | ABOVE PREMIUM | 1                    | Top 90      | 4                  |
| 11342     | 7289000159  | HEINEKEN LIGHT 12/ 12 BTL     | ABOVE PREMIUM | 1                    | Side        | 2                  |
| 11301     | 7289000020  | HEINEKEN 12/ 12 CAN           | ABOVE PREMIUM | 1                    | Side 90     | 4                  |
| 10790     | 7231123021  | SOL 12/ 12 BTL                | ABOVE PREMIUM | 1                    | Side        | 2                  |
| 15429     | 8066095715  | MODELO ESPECIAL 12/ 12 CAN    | ABOVE PREMIUM | 1                    | Side 90     | 4                  |
| 15449     | 8066095787  | MODELO NEGRA 12/ 12 BTL       | ABOVE PREMIUM | 1                    | Front       | 2                  |
| 15416     | 8066095675  | CORONA LIGHT 12/ 12 BTL       | ABOVE PREMIUM | 2                    | Front       | 6                  |
| 51878     | 3354495053  | CORONA FAMILIAR 12/ 12 BTL    | ABOVE PREMIUM | 1                    | Side        | 2                  |
| 58827     | 73692011651 | GOOSE ISLAND IPA 15/ 12 CAN   | ABOVE PREMIUM | 1                    | Side 90     | 2                  |

| Name: 3_3 |             | W:240.00 in                      | D:22.00 in    | Avail Space: 0.94 in |             | Ht Space: 12.00 in |
|-----------|-------------|----------------------------------|---------------|----------------------|-------------|--------------------|
| ID        | UPC         | Name                             | Category      | HFacings             | Orientation | Units              |
| 17305     | 8382012393  | GUINNESS EXTRA STOUT 6/ 12 ...   | ABOVE PREMIUM | 1                    | Front       | 4                  |
| 14089     | 78615000001 | STELLA ARTOIS 6/ 11.2 BTL        | ABOVE PREMIUM | 1                    | Front       | 4                  |
| 89681     | 7289000621  | HEINEKEN 0.0 NEAR BEER 6/ 12 ... | ABOVE PREMIUM | 1                    | Front       | 4                  |
| 11298     | 7289000011  | HEINEKEN 6/ 12 BTL               | ABOVE PREMIUM | 1                    | Front       | 4                  |
| 570       | 18195400004 | PERONI 12/ 11.2 BTL              | ABOVE PREMIUM | 1                    | Side        | 2                  |
| 15442     | 8066095765  | MODELO ESPECIAL 6/ 12 BTL        | ABOVE PREMIUM | 1                    | Front       | 3                  |
| 15448     | 8066095785  | MODELO NEGRA 6/ 12 BTL           | ABOVE PREMIUM | 1                    | Front       | 3                  |
| 15406     | 8066095621  | CORONA LIGHT 12/ 12 CAN          | ABOVE PREMIUM | 1                    | Top 90      | 3                  |
| 44952     | 3354495042  | CORONA PREMIER 12/ 12 BTL        | ABOVE PREMIUM | 3                    | Side        | 6                  |
| 13009     | 75452700022 | NEW BELGIUM FAT TIRE 6/ 12 B...  | ABOVE PREMIUM | 1                    | Front       | 4                  |
| 13037     | 75452700161 | NEW BELGIUM FAT TIRE 12/ 12 ...  | ABOVE PREMIUM | 1                    | Top 90      | 2                  |

| Name: 3_4 |             | W:240.00 in                    | D:23.00 in    | Avail Space: 1.20 in |             | Ht Space: 15.00 in |
|-----------|-------------|--------------------------------|---------------|----------------------|-------------|--------------------|
| ID        | UPC         | Name                           | Category      | HFacings             | Orientation | Units              |
| 17299     | 8382012368  | GUINNESS DRAUGHT STOUT 8/ ...  | ABOVE PREMIUM | 1                    | Front 90    | 4                  |
| 17293     | 8382012360  | GUINNESS DRAUGHT STOUT 4/ ...  | ABOVE PREMIUM | 1                    | Side        | 4                  |
| 11348     | 7289000188  | HEINEKEN LIGHT 12/ 12 CAN      | ABOVE PREMIUM | 1                    | Top 90      | 3                  |
| 11310     | 7289000042  | HEINEKEN 6/ 7 BTL              | ABOVE PREMIUM | 1                    | Front       | 5                  |
| 568       | 18195400002 | PERONI 6/ 11.2 BTL             | ABOVE PREMIUM | 1                    | Front       | 4                  |
| 22477     | 8839400006  | SPATEN OKTOBERFEST 6/ 12 BTL   | ABOVE PREMIUM | 1                    | Front       | 4                  |
| 15426     | 8066095695  | CORONA 12/ 12 CAN              | ABOVE PREMIUM | 1                    | Side 90     | 4                  |
| 15400     | 8066095605  | CORONA 6/ 12 BTL               | ABOVE PREMIUM | 1                    | Front       | 4                  |
| 15400     | 8066095605  | CORONA 6/ 12 BTL               | ABOVE PREMIUM | 1                    | Side        | 2                  |
| 15408     | 8066095625  | CORONA LIGHT 6/ 12 BTL         | ABOVE PREMIUM | 1                    | Front       | 4                  |
| 44964     | 3354495041  | CORONA PREMIER 6/ 12 BTL       | ABOVE PREMIUM | 1                    | Front       | 4                  |
| 44966     | 3354495044  | CORONA PREMIER 12/ 12 CAN      | ABOVE PREMIUM | 1                    | Top 90      | 3                  |
| 45591     | 63848900189 | DOGFISH HEAD 60 MINUTE IPA ... | ABOVE PREMIUM | 1                    | Top 90      | 2                  |
| 65038     | 75452700885 | NEW BELGIUM VODOO JUICY ...    | ABOVE PREMIUM | 1                    | Side        | 6                  |

# SHOPRITE\_272

# Store # 272

Cooler Size: WAKEFERN FOOD CORP/HQ

Address: 125 DOLSON AVE

MIDDLETOWN, NY



|              |             |                 |          |                 |                   |
|--------------|-------------|-----------------|----------|-----------------|-------------------|
| SHOPRITE_272 | Store # 272 | H: 5 ft 5.00 in | W: 40 ft | D: 2 ft 6.00 in | # of segments: 10 |
|--------------|-------------|-----------------|----------|-----------------|-------------------|

| Name: 3_1 |             | W:240.00 in                   | D:30.00 in    | Avail Space: 1.66 in |             | Ht Space: 22.00 in |
|-----------|-------------|-------------------------------|---------------|----------------------|-------------|--------------------|
| ID        | UPC         | Name                          | Category      | HFacings             | Orientation | Units              |
| 21940     | 8769201103  | SAMUEL ADAMS SEASONAL 12/...  | ABOVE PREMIUM | 2                    | Side        | 12                 |
| 10870     | 72383010009 | LAGUNITAS IPA 12/ 12 BTL      | ABOVE PREMIUM | 1                    | Side        | 6                  |
| 10183     | 7199009516  | BLUE MOON BELGIAN WHITE 12... | ABOVE PREMIUM | 1                    | Side        | 6                  |
| 63851     | 7199017052  | BLUE MOON BELGIAN WHITE 15... | ABOVE PREMIUM | 1                    | Side 90     | 8                  |
| 7044      | 64286090024 | FOUNDERS ALL DAY SESSION I... | ABOVE PREMIUM | 1                    | Side 90     | 8                  |

| Name: 3_2 |             | W:240.00 in                      | D:23.00 in    | Avail Space: 2.99 in |             | Ht Space: 12.00 in |
|-----------|-------------|----------------------------------|---------------|----------------------|-------------|--------------------|
| ID        | UPC         | Name                             | Category      | HFacings             | Orientation | Units              |
| 107006    | 73692011926 | GOOSE ISLAND SO-LO IPA 15/ 12... | ABOVE PREMIUM | 1                    | Side 90     | 2                  |
| 21957     | 8769210014  | SAMUEL ADAMS BOSTON LAGE...      | ABOVE PREMIUM | 1                    | Side        | 2                  |
| 17211     | 8378337512  | SIERRA NEVADA PALE ALE 12/ 1...  | ABOVE PREMIUM | 1                    | Side        | 2                  |
| 99516     | 72383021212 | LAGUNITAS IPA 12/ 12 CAN         | ABOVE PREMIUM | 1                    | Top 90      | 3                  |
| 99754     | 7199009592  | BLUE MOON LIGHT SKY 12/ 12 C...  | ABOVE PREMIUM | 1                    | Top 90      | 3                  |
| 1620      | 1820028156  | SHOCK TOP BELGIAN WHITE 15...    | ABOVE PREMIUM | 1                    | Side 90     | 2                  |
| 75134     | 68174500134 | BLUE POINT TOASTED LAGER 1...    | ABOVE PREMIUM | 1                    | Side 90     | 2                  |

| Name: 3_3 |             | W:240.00 in                   | D:22.00 in    | Avail Space: 0.94 in |             | Ht Space: 12.00 in |
|-----------|-------------|-------------------------------|---------------|----------------------|-------------|--------------------|
| ID        | UPC         | Name                          | Category      | HFacings             | Orientation | Units              |
| 21856     | 8769200109  | SAMUEL ADAMS SEASONAL 12/...  | ABOVE PREMIUM | 1                    | Side 90     | 4                  |
| 21988     | 8769229103  | SAMUEL ADAMS VARIETY PACK...  | ABOVE PREMIUM | 1                    | Side        | 2                  |
| 3494      | 3410051607  | LEINIES SEASONAL PRIMARY 1... | ABOVE PREMIUM | 1                    | Side        | 2                  |
| 10180     | 7199009511  | BLUE MOON BELGIAN WHITE 6/... | ABOVE PREMIUM | 1                    | Front       | 4                  |
| 52926     | 81601402080 | SOUTHERN TIER OVERPACKD 1...  | ABOVE PREMIUM | 1                    | Side 90     | 2                  |
| 10031     | 7167007106  | SARANAC 12 BEERS 12/ 12 BTL   | ABOVE PREMIUM | 1                    | Side        | 2                  |

| Name: 3_4 |             | W:240.00 in                     | D:23.00 in    | Avail Space: 1.20 in |             | Ht Space: 15.00 in |
|-----------|-------------|---------------------------------|---------------|----------------------|-------------|--------------------|
| ID        | UPC         | Name                            | Category      | HFacings             | Orientation | Units              |
| 21995     | 8769230050  | SAMUEL ADAMS SEASONAL 6/ 1...   | ABOVE PREMIUM | 1                    | Front       | 4                  |
| 65030     | 8769200497  | SAMUEL ADAMS 76 12/ 12 CAN      | ABOVE PREMIUM | 1                    | Side 90     | 4                  |
| 3492      | 3410051605  | LEINIES SEASONAL PRIMARY 6/...  | ABOVE PREMIUM | 1                    | Front       | 4                  |
| 62048     | 7199009561  | BLUE MOON MANGO WHEAT 6/...     | ABOVE PREMIUM | 1                    | Front       | 4                  |
| 15961     | 81760601020 | CAPTAIN LAWRENCE IPA 6/ 12 B... | ABOVE PREMIUM | 1                    | Front       | 4                  |
| 90228     | 86036700072 | SLOOP JUICE BOMB IPA 6/ 12 CAN  | ABOVE PREMIUM | 1                    | Side        | 4                  |
| 52632     | 86326700005 | NEWBURGH MEGA BOSS 4/ 16 C...   | ABOVE PREMIUM | 1                    | Front       | 4                  |

| Name: 8_7 |            | W:240.00 in               | D:30.00 in    | Avail Space: 0.74 in |             | Ht Space: 20.50 in |
|-----------|------------|---------------------------|---------------|----------------------|-------------|--------------------|
| ID        | UPC        | Name                      | Category      | HFacings             | Orientation | Units              |
| 1830      | 1820096624 | MICHELOB ULTRA 18/ 12 BTL | ABOVE PREMIUM | 1                    | Side        | 4                  |
| 1850      | 1820096721 | MICHELOB ULTRA 18/ 12 CAN | ABOVE PREMIUM | 1                    | Side 90     | 6                  |
| 1849      | 1820096715 | MICHELOB ULTRA 24/ 12 CAN | ABOVE PREMIUM | 1                    | Top         | 9                  |
| 1341      | 1820012998 | LANDSHARK 12/ 12 BTL      | ABOVE PREMIUM | 1                    | Side        | 6                  |
| 5922      | 6206705155 | LABATT BLUE 12/ 11.5 BTL  | ABOVE PREMIUM | 1                    | Side        | 6                  |

| Name: 7_5 |            | W:192.00 in                   | D:23.00 in    | Avail Space: 2.96 in |             | Ht Space: 17.00 in |
|-----------|------------|-------------------------------|---------------|----------------------|-------------|--------------------|
| ID        | UPC        | Name                          | Category      | HFacings             | Orientation | Units              |
| 1241      | 1820006991 | MICHELOB ULTRA 12/ 12 CAN     | ABOVE PREMIUM | 1                    | Side        | 4                  |
| 1228      | 1820005990 | MICHELOB ULTRA 12/ 12 BTL     | ABOVE PREMIUM | 1                    | Front       | 5                  |
| 1356      | 1820014990 | BUD LIGHT LIME 12/ 12 BTL     | ABOVE PREMIUM | 1                    | Side        | 2                  |
| 69618     | 1820020080 | BUD LIGHT ORANGE 12/ 12 BTL   | ABOVE PREMIUM | 1                    | Side        | 2                  |
| 107011    | 1820020201 | BUDWEISER NITRO GOLD 12/ 1... | ABOVE PREMIUM | 1                    | Side 90     | 6                  |
| 23903     | 8992427898 | YUENGLING LAGER 12/ 12 CAN    | PREMIUM       | 1                    | Side 90     | 6                  |

# SHOPRITE\_272

Store # 272

Cooler Size: WAKEFERN FOOD CORP/HQ

Address: 125 DOLSON AVE

MIDDLETOWN, NY



| Name: 7_6 |            | W:192.00 in                   | D:23.00 in    | Avail Space: 2.57 in |             | Ht Space: 11.00 in |
|-----------|------------|-------------------------------|---------------|----------------------|-------------|--------------------|
| ID        | UPC        | Name                          | Category      | HFacings             | Orientation | Units              |
| 58373     | 1820020019 | MICHELOB ULTRA LIME CACTU...  | ABOVE PREMIUM | 1                    | Side        | 2                  |
| 1121      | 1820000884 | MICHELOB LIGHT 12/ 12 BTL     | ABOVE PREMIUM | 1                    | Side        | 2                  |
| 65828     | 1820020083 | MICHELOB ULTRA PURE GOLD ...  | ABOVE PREMIUM | 1                    | Front       | 3                  |
| 1378      | 1820015983 | BUD LIGHT LIME 12/ 12 CAN     | ABOVE PREMIUM | 1                    | Top 90      | 3                  |
| 70307     | 1820020090 | BUD LIGHT ORANGE 12/ 12 CAN   | ABOVE PREMIUM | 1                    | Top 90      | 3                  |
| 1428      | 1820018992 | BUD LIGHT PLATINUM 12/ 12 BTL | ABOVE PREMIUM | 1                    | Side        | 2                  |

| Name: 8_8 |             | W:240.00 in                     | D:23.00 in    | Avail Space: 0.93 in |             | Ht Space: 11.50 in |
|-----------|-------------|---------------------------------|---------------|----------------------|-------------|--------------------|
| ID        | UPC         | Name                            | Category      | HFacings             | Orientation | Units              |
| 86792     | 85777500729 | SAINT ARCHER GOLD 12/ 12 CAN    | ABOVE PREMIUM | 1                    | Top 90      | 3                  |
| 1227      | 1820005989  | MICHELOB ULTRA 6/ 12 BTL        | ABOVE PREMIUM | 1                    | Front       | 4                  |
| 65024     | 1820020082  | MICHELOB ULTRA PURE GOLD ...    | ABOVE PREMIUM | 1                    | Front       | 4                  |
| 104747    | 1820020210  | BUD LIGHT PEELS VARIETY 12/ ... | ABOVE PREMIUM | 1                    | Top 90      | 3                  |
| 107322    | 1820020209  | BUD LIGHT LEMONADE 12/ 12 C...  | ABOVE PREMIUM | 1                    | Top 90      | 3                  |
| 1465      | 1820020994  | BUD LIGHT PLATINUM 12/ 12 CAN   | ABOVE PREMIUM | 1                    | Top 90      | 3                  |
| 23900     | 8992427891  | YUENGLING LAGER 6/ 12 BTL       | PREMIUM       | 1                    | Front       | 4                  |

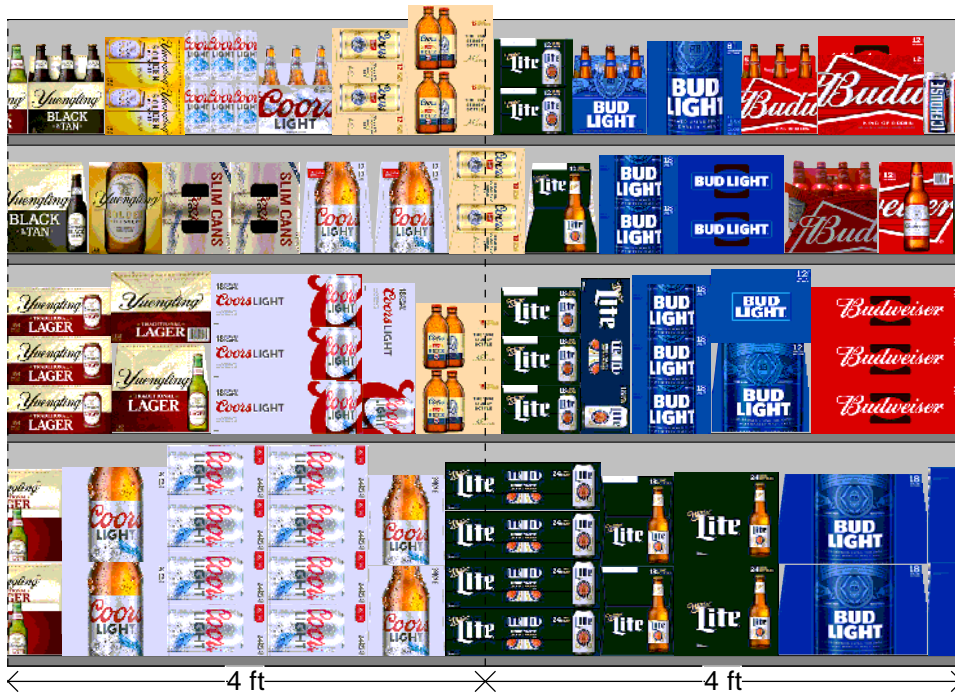
# SHOPRITE\_272

# Store # 272

Cooler Size: WAKEFERN FOOD CORP/HQ

Address: 125 DOLSON AVE

MIDDLETOWN, NY



|              |             |                 |          |                 |                   |
|--------------|-------------|-----------------|----------|-----------------|-------------------|
| SHOPRITE_272 | Store # 272 | H: 5 ft 5.00 in | W: 40 ft | D: 2 ft 6.00 in | # of segments: 10 |
|--------------|-------------|-----------------|----------|-----------------|-------------------|

| Name: 8_7 |            | W: 240.00 in                | D: 30.00 in | Avail Space: 0.74 in |             | Ht Space: 20.50 in |
|-----------|------------|-----------------------------|-------------|----------------------|-------------|--------------------|
| ID        | UPC        | Name                        | Category    | HFacings             | Orientation | Units              |
| 23915     | 8992441003 | YUENGLING LAGER 24/ 12 BTL  | PREMIUM     | 1                    | Side        | 2                  |
| 10353     | 7199030079 | COORS LIGHT 24/ 12 BTL (HG) | PREMIUM     | 1                    | Side        | 3                  |
| 10380     | 7199031600 | COORS LIGHT 24/ 12 CAN      | PREMIUM     | 2                    | Side 90     | 10                 |
| 10352     | 7199030078 | COORS LIGHT 18/ 12 BTL      | PREMIUM     | 1                    | Side        | 4                  |
| 3541      | 3410057306 | LITE 24/ 12 CAN             | PREMIUM     | 1                    | Top         | 8                  |
| 3532      | 3410057256 | LITE 18/ 12 BTL             | PREMIUM     | 1                    | Side        | 4                  |
| 3531      | 3410057243 | LITE 24/ 12 BTL (HG)        | PREMIUM     | 1                    | Side        | 4                  |
| 1670      | 1820053308 | BUD LIGHT 18/ 12 BTL        | PREMIUM     | 1                    | Front       | 8                  |

| Name: 7_5 |            | W: 192.00 in                   | D: 23.00 in | Avail Space: 2.96 in |             | Ht Space: 17.00 in |
|-----------|------------|--------------------------------|-------------|----------------------|-------------|--------------------|
| ID        | UPC        | Name                           | Category    | HFacings             | Orientation | Units              |
| 23928     | 8992488007 | YUENGLING LAGER 24/ 12 CAN     | PREMIUM     | 1                    | Side 90     | 3                  |
| 23902     | 8992427896 | YUENGLING LAGER 12/ 12 BTL     | PREMIUM     | 1                    | Front       | 5                  |
| 10329     | 7199030017 | COORS LIGHT 18/ 12 CAN         | PREMIUM     | 1                    | Top         | 9                  |
| 10329     | 7199030017 | COORS LIGHT 18/ 12 CAN         | PREMIUM     | 1                    | Top 90      | 3                  |
| 10284     | 7199017038 | COORS BANQUET 18/ 12 BTL (S... | PREMIUM     | 1                    | Side        | 2                  |
| 3552      | 3410057340 | LITE 18/ 12 CAN                | PREMIUM     | 1                    | Side 90     | 3                  |
| 3552      | 3410057340 | LITE 18/ 12 CAN                | PREMIUM     | 1                    | Top 90      | 2                  |
| 1667      | 1820053218 | BUD LIGHT 18/ 12 CAN           | PREMIUM     | 1                    | Side 90     | 4                  |
| 1056      | 1820000769 | BUD LIGHT 12/ 12 BTL           | PREMIUM     | 1                    | Front       | 5                  |
| 1304      | 1820011168 | BUD 24/ 12 CAN                 | PREMIUM     | 1                    | Top         | 6                  |

| Name: 7_6 |            | W: 192.00 in                   | D: 23.00 in | Avail Space: 2.57 in |             | Ht Space: 11.00 in |
|-----------|------------|--------------------------------|-------------|----------------------|-------------|--------------------|
| ID        | UPC        | Name                           | Category    | HFacings             | Orientation | Units              |
| 23909     | 8992429386 | YUENGLING BLACK AND TAN 12...  | PREMIUM     | 1                    | Front       | 3                  |
| 68457     | 8992433125 | YUENGLING GOLDEN PILSNER ...   | PREMIUM     | 1                    | Side        | 2                  |
| 107283    | 7199070028 | COORS LIGHT 12/ 12 CAN (SLEEK) | PREMIUM     | 2                    | Top 90      | 6                  |
| 10348     | 7199030069 | COORS LIGHT 12/ 12 BTL         | PREMIUM     | 2                    | Side        | 4                  |
| 10234     | 7199010020 | COORS BANQUET 18/ 12 CAN       | PREMIUM     | 1                    | Side 90     | 2                  |
| 3565      | 3410057509 | LITE 12/ 12 BTL                | PREMIUM     | 1                    | Side        | 2                  |
| 1667      | 1820053218 | BUD LIGHT 18/ 12 CAN           | PREMIUM     | 1                    | Side 90     | 2                  |
| 1659      | 1820053047 | BUD LIGHT 12/ 12 CAN           | PREMIUM     | 1                    | Top         | 4                  |
| 1472      | 1820021979 | BUD 8/ 16 BTL (AL)             | PREMIUM     | 1                    | Front       | 4                  |
| 1058      | 1820000771 | BUD 12/ 12 BTL                 | PREMIUM     | 1                    | Side        | 2                  |

| Name: 8_8 |            | W: 240.00 in                   | D: 23.00 in | Avail Space: 0.93 in |             | Ht Space: 11.50 in |
|-----------|------------|--------------------------------|-------------|----------------------|-------------|--------------------|
| ID        | UPC        | Name                           | Category    | HFacings             | Orientation | Units              |
| 23929     | 8992495432 | YUENGLING BLACK AND TAN 6/ ... | PREMIUM     | 1                    | Front       | 4                  |
| 73080     | 8992433481 | YUENGLING GOLDEN PILSNER ...   | PREMIUM     | 1                    | Side 90     | 4                  |
| 10155     | 7199000008 | COORS LIGHT 6/ 12 CAN          | PREMIUM     | 1                    | Front       | 8                  |
| 10322     | 7199030005 | COORS LIGHT 6/ 12 BTL          | PREMIUM     | 1                    | Front       | 4                  |
| 10163     | 7199000047 | COORS BANQUET 12/ 12 CAN       | PREMIUM     | 1                    | Side 90     | 4                  |
| 10283     | 7199017037 | COORS BANQUET 12/ 12 BTL (S... | PREMIUM     | 1                    | Side        | 4                  |
| 3579      | 3410057636 | LITE 12/ 12 CAN                | PREMIUM     | 1                    | Side 90     | 4                  |
| 1083      | 1820000833 | BUD LIGHT 6/ 12 BTL            | PREMIUM     | 1                    | Front       | 4                  |
| 1469      | 1820020998 | BUD LIGHT 8/ 16 BTL (AL)       | PREMIUM     | 1                    | Front       | 4                  |
| 1084      | 1820000834 | BUD 6/ 12 BTL                  | PREMIUM     | 1                    | Front       | 4                  |
| 1297      | 1820011047 | BUD 12/ 12 CAN                 | PREMIUM     | 1                    | Top         | 5                  |
| 3135      | 3410000882 | ICEHOUSE 6/ 16 CAN             | ECONOMY     | 1                    | Front       | 4                  |

# SHOPRITE\_272

# Store # 272

Cooler Size: WAKEFERN FOOD CORP/HQ

Address: 125 DOLSON AVE

MIDDLETOWN, NY



← 4 ft × 4 ft →

|              |             |                 |          |                 |                   |
|--------------|-------------|-----------------|----------|-----------------|-------------------|
| SHOPRITE_272 | Store # 272 | H: 5 ft 5.00 in | W: 40 ft | D: 2 ft 6.00 in | # of segments: 10 |
|--------------|-------------|-----------------|----------|-----------------|-------------------|

| Name: 8_7 |            | W: 240.00 in              | D: 30.00 in | Avail Space: 0.74 in |             | Ht Space: 20.50 in |
|-----------|------------|---------------------------|-------------|----------------------|-------------|--------------------|
| ID        | UPC        | Name                      | Category    | HFacings             | Orientation | Units              |
| 1672      | 1820053349 | BUD LIGHT 24/ 12 BTL (HG) | PREMIUM     | 1                    | Side        | 4                  |
| 1664      | 1820053168 | BUD LIGHT 24/ 12 CAN      | PREMIUM     | 1                    | Top         | 8                  |
| 1312      | 1820011349 | BUD 24/ 12 BTL (HG)       | PREMIUM     | 1                    | Side        | 4                  |
| 2326      | 2210011219 | PABST 30/ 12 CAN          | ECONOMY     | 1                    | Side        | 4                  |
| 3193      | 3410001341 | HIGH LIFE 30/ 12 CAN      | ECONOMY     | 1                    | Side        | 4                  |
| 1681      | 1820061030 | BUSCH 30/ 12 CAN          | ECONOMY     | 1                    | Side        | 4                  |
| 92510     | 1820020133 | NATURDAYS 12/ 12 CAN      | ECONOMY     | 1                    | Side 90     | 8                  |
| 61975     | 1820020077 | NATURAL LIGHT 15/ 12 CAN  | ECONOMY     | 1                    | Side 90     | 8                  |
| 61976     | 1820020078 | NATTY DADDY 15/ 12 CAN    | ECONOMY     | 1                    | Side 90     | 8                  |
| 45405     | 7199048045 | KEYSTONE LIGHT 15/ 12 CAN | ECONOMY     | 1                    | Side 90     | 6                  |
| 52793     | 7199028151 | KEYSTONE ICE 15/ 12 CAN   | ECONOMY     | 1                    | Side 90     | 6                  |

| Name: 7_5 |            | W: 192.00 in            | D: 23.00 in | Avail Space: 2.96 in |             | Ht Space: 17.00 in |
|-----------|------------|-------------------------|-------------|----------------------|-------------|--------------------|
| ID        | UPC        | Name                    | Category    | HFacings             | Orientation | Units              |
| 1310      | 1820011308 | BUD 18/ 12 BTL          | PREMIUM     | 1                    | Front       | 5                  |
| 1307      | 1820011218 | BUD 18/ 12 CAN          | PREMIUM     | 1                    | Side 90     | 3                  |
| 1684      | 1820061047 | BUSCH 12/ 12 CAN        | ECONOMY     | 1                    | Side 90     | 6                  |
| 1071      | 1820000801 | BUSCH LIGHT 12/ 12 CAN  | ECONOMY     | 1                    | Side 90     | 6                  |
| 9886      | 7143934450 | ROLLING ROCK 12/ 12 CAN | ECONOMY     | 1                    | Side 90     | 6                  |

| Name: 7_6 |            | W: 192.00 in                | D: 23.00 in | Avail Space: 2.57 in |             | Ht Space: 11.00 in |
|-----------|------------|-----------------------------|-------------|----------------------|-------------|--------------------|
| ID        | UPC        | Name                        | Category    | HFacings             | Orientation | Units              |
| 68563     | 1820020068 | BUDWEISER RESERVE SEASON... | PREMIUM     | 1                    | Side        | 2                  |
| 2241      | 2210000170 | PABST 12/ 12 CAN            | ECONOMY     | 1                    | Side 90     | 4                  |
| 2763      | 3410000007 | HIGH LIFE 6/ 16 CAN         | ECONOMY     | 1                    | Front       | 4                  |
| 3197      | 3410001505 | HIGH LIFE 6/ 12 BTL         | ECONOMY     | 1                    | Front       | 4                  |
| 3198      | 3410001509 | HIGH LIFE 12/ 12 BTL        | ECONOMY     | 1                    | Front       | 3                  |
| 9905      | 7143945712 | ROLLING ROCK 12/ 12 BTL     | ECONOMY     | 1                    | Side        | 2                  |

| Name: 8_8 |             | W: 240.00 in                    | D: 23.00 in   | Avail Space: 0.93 in |             | Ht Space: 11.50 in |
|-----------|-------------|---------------------------------|---------------|----------------------|-------------|--------------------|
| ID        | UPC         | Name                            | Category      | HFacings             | Orientation | Units              |
| 624       | 1820000063  | BUSCH 6/ 16 CAN                 | ECONOMY       | 1                    | Front       | 8                  |
| 11307     | 7289000030  | BUCKLER NEAR BEER 6/ 12 BTL     | ABOVE PREMIUM | 1                    | Front       | 4                  |
| 16707     | 8248812700  | BECKS NEAR BEER 6/ 12 BTL       | NA BEER       | 1                    | Front       | 4                  |
| 1065      | 1820000784  | ODOULS NEAR BEER 6/ 12 BTL      | NA BEER       | 1                    | Front       | 4                  |
| 1705      | 1820079047  | ODOULS NEAR BEER 12/ 12 CAN     | NA BEER       | 1                    | Side 90     | 4                  |
| 97015     | 63598526039 | WHITE CLAW MANGO 1/ 19.2 CAN    | ABOVE PREMIUM | 2                    | Front       | 16                 |
| 63674     | 63598526038 | WHITE CLAW BLACK CHERRY 1...    | ABOVE PREMIUM | 2                    | Front       | 16                 |
| 106968    | 3410000097  | VIZZY PINEAPPLE MANGO 1/ 24 ... | ABOVE PREMIUM | 1                    | Front       | 8                  |
| 22077     | 8769275231  | TWISTED TEA HALF AND HALF ...   | ABOVE PREMIUM | 2                    | Front       | 14                 |
| 22099     | 8769283231  | TWISTED TEA ORIGINAL 1/ 24 C... | ABOVE PREMIUM | 2                    | Front       | 14                 |
| 6470      | 63598524985 | MIKES HARDER CRANBERRY L...     | ABOVE PREMIUM | 2                    | Front       | 16                 |
| 6462      | 63598524583 | MIKES HARDER LEMONADE 1/ 2...   | ABOVE PREMIUM | 2                    | Front       | 16                 |
| 56771     | 7031001483  | SEAGRAMS ESCAPES SPIKED J...    | ABOVE PREMIUM | 2                    | Front       | 16                 |
| 15413     | 8066095641  | CORONA 1/ 24 BTL                | ABOVE PREMIUM | 2                    | Front       | 14                 |
| 11367     | 7289000478  | HEINEKEN 1/ 22 BTL              | ABOVE PREMIUM | 2                    | Front       | 14                 |

| Name: 10_9 |            | W: 48.00 in           | D: 23.00 in | Avail Space: 2.07 in |             | Ht Space: 9.50 in |
|------------|------------|-----------------------|-------------|----------------------|-------------|-------------------|
| ID         | UPC        | Name                  | Category    | HFacings             | Orientation | Units             |
| 2191       | 2210000004 | PABST 1/ 24 CAN       | ECONOMY     | 2                    | Front       | 14                |
| 1523       | 1820025003 | BUSCH 1/ 25 CAN       | ECONOMY     | 2                    | Front       | 16                |
| 1533       | 1820025013 | NATTY DADDY 1/ 25 CAN | ECONOMY     | 4                    | Front       | 32                |



# SHOPRITE\_272

# Store # 272

Cooler Size: WAKEFERN FOOD CORP/HQ

Address: 125 DOLSON AVE

MIDDLETOWN, NY

|       |            |                               |         |   |       |    |
|-------|------------|-------------------------------|---------|---|-------|----|
| 1522  | 1820025002 | NATURAL LIGHT 1/25 CAN        | ECONOMY | 2 | Front | 16 |
| 1528  | 1820025008 | NATURAL ICE 1/25 CAN          | ECONOMY | 2 | Front | 16 |
| 3128  | 3410000820 | MILWAUKES BEST ICE 1/24 CAN   | ECONOMY | 1 | Front | 8  |
| 13978 | 7825000605 | STEEL RESERVE ALLOY BLK BE... | ECONOMY | 1 | Front | 7  |
| 13877 | 7825000328 | STEEL RESERVE 211 1/24 CAN    | ECONOMY | 2 | Front | 16 |

| Name: 10_10 |            | W:48.00 in              | D:23.00 in | Avail Space: 2.39 in |             | Ht Space: 9.50 in |
|-------------|------------|-------------------------|------------|----------------------|-------------|-------------------|
| ID          | UPC        | Name                    | Category   | HFacings             | Orientation | Units             |
| 1521        | 1820025001 | BUD LIGHT 1/25 CAN      | PREMIUM    | 2                    | Front       | 16                |
| 10243       | 7199010071 | COORS BANQUET 1/24 CAN  | PREMIUM    | 3                    | Front       | 24                |
| 1520        | 1820025000 | BUD 1/25 CAN            | PREMIUM    | 2                    | Front       | 16                |
| 2761        | 3410000005 | HIGH LIFE 1/24 CAN      | ECONOMY    | 1                    | Front       | 8                 |
| 9868        | 7143900601 | ROLLING ROCK 1/25 CAN   | ECONOMY    | 1                    | Front       | 8                 |
| 10436       | 7199048024 | KEYSTONE LIGHT 1/24 CAN | ECONOMY    | 4                    | Front       | 32                |
| 10412       | 7199047712 | KEYSTONE ICE 1/24 CAN   | ECONOMY    | 3                    | Front       | 24                |

| Name: 10_11 |             | W:48.00 in                     | D:23.00 in    | Avail Space: 1.59 in |             | Ht Space: 9.00 in |
|-------------|-------------|--------------------------------|---------------|----------------------|-------------|-------------------|
| ID          | UPC         | Name                           | Category      | HFacings             | Orientation | Units             |
| 15415       | 8066095643  | CORONA 1/24 CAN                | ABOVE PREMIUM | 2                    | Front       | 16                |
| 11327       | 7289000119  | HEINEKEN 1/24 CAN              | ABOVE PREMIUM | 2                    | Front       | 14                |
| 9452        | 7089701331  | FOSTERS 1/25.4 CAN             | ABOVE PREMIUM | 2                    | Front       | 12                |
| 9488        | 7089718331  | FOSTERS PREMIUM 1/25.4 CAN     | ABOVE PREMIUM | 2                    | Front       | 12                |
| 66037       | 78615000170 | STELLA ARTOIS 1/19.2 CAN       | ABOVE PREMIUM | 1                    | Side        | 8                 |
| 43248       | 64286013024 | FOUNDERS ALL DAY SESSION I...  | ABOVE PREMIUM | 2                    | Front       | 16                |
| 58705       | 63848900306 | DOGFISH HEAD 60 MINUTE IPA ... | ABOVE PREMIUM | 2                    | Front       | 16                |
| 10346       | 7199030065  | COORS LIGHT 1/24 CAN           | PREMIUM       | 2                    | Front       | 16                |
| 2968        | 3410000355  | LITE 1/24 CAN                  | PREMIUM       | 1                    | Front       | 8                 |



# SHOPRITE\_272

Store # 272

SHOPRITE\_272 Store # 272 H: 5 ft 5.00 in W: 40 ft D: 2 ft 6.00 in # of segments: 10

| Name: 3_1 |             | W:240.00 in                    | D:30.00 in    | Avail Space: 1.66 in | Ht Space: 22.00 in |       |  |
|-----------|-------------|--------------------------------|---------------|----------------------|--------------------|-------|--|
| ID        | UPC         | Name                           | Category      | HFacings             | Orientation        | Units |  |
| 45151     | 63598554890 | WHITE CLAW VARIETY PACK 12...  | ABOVE PREMIUM | 1                    | Front              | 12    |  |
| 45151     | 63598554890 | WHITE CLAW VARIETY PACK 12...  | ABOVE PREMIUM | 1                    | Side               | 9     |  |
| 106595    | 63598580006 | WHITE CLAW VARIETY PACK 12...  | ABOVE PREMIUM | 1                    | Side               | 9     |  |
| 83125     | 63598526089 | WHITE CLAW BLACK CHERRY ...    | ABOVE PREMIUM | 1                    | Side               | 9     |  |
| 87955     | 8769200804  | TRULY VARIETY TROPICAL 12/1... | ABOVE PREMIUM | 1                    | Side               | 9     |  |
| 105977    | 1820020208  | BUD LIGHT SELTZER VARIETY ...  | ABOVE PREMIUM | 1                    | Side               | 9     |  |
| 105038    | 3410001232  | VIZZY VARIETY 12/12 CAN        | ABOVE PREMIUM | 1                    | Side               | 9     |  |
| 104728    | 3354400043  | CORONA SELTZER VARIETY 12/...  | ABOVE PREMIUM | 1                    | Side               | 9     |  |
| 15329     | 8043280290  | SEAGRAMS ESCAPES VARIETY...    | ABOVE PREMIUM | 1                    | Side               | 6     |  |
| 22093     | 8769283103  | TWISTED TEA ORIGINAL 12/12 ... | ABOVE PREMIUM | 1                    | Side               | 6     |  |
| 6433      | 63598512998 | MIKES HARD VARIETY PACK 12...  | ABOVE PREMIUM | 1                    | Side               | 6     |  |
| 21815     | 8769200017  | ANGRY ORCHARD EXPLORER ...     | ABOVE PREMIUM | 1                    | Side               | 6     |  |
| 16691     | 8248812300  | BECKS 12/12 BTL                | ABOVE PREMIUM | 1                    | Side               | 6     |  |
| 14094     | 78615000014 | STELLA ARTOIS 12/11.2 BTL      | ABOVE PREMIUM | 1                    | Side               | 6     |  |
| 14094     | 78615000014 | STELLA ARTOIS 12/11.2 BTL      | ABOVE PREMIUM | 1                    | Side               | 6     |  |
| 11300     | 72890000016 | HEINEKEN 12/12 BTL             | ABOVE PREMIUM | 1                    | Front              | 8     |  |
| 11300     | 72890000016 | HEINEKEN 12/12 BTL             | ABOVE PREMIUM | 1                    | Side               | 6     |  |
| 15436     | 8066095757  | MODELO ESPECIAL 12/12 BTL      | ABOVE PREMIUM | 1                    | Front              | 6     |  |
| 15417     | 8066095680  | CORONA 18/12 BTL               | ABOVE PREMIUM | 2                    | Side               | 4     |  |
| 15403     | 8066095615  | CORONA 12/12 BTL               | ABOVE PREMIUM | 5                    | Side               | 30    |  |
| 21940     | 8769201103  | SAMUEL ADAMS SEASONAL 12...    | ABOVE PREMIUM | 2                    | Side               | 12    |  |
| 10870     | 72383010009 | LAGUNITAS IPA 12/12 BTL        | ABOVE PREMIUM | 1                    | Side               | 6     |  |
| 10183     | 7199009516  | BLUE MOON BELGIAN WHITE 1...   | ABOVE PREMIUM | 1                    | Side               | 6     |  |
| 63851     | 7199017052  | BLUE MOON BELGIAN WHITE 1...   | ABOVE PREMIUM | 1                    | Side 90            | 8     |  |
| 7044      | 64286090024 | FOUNDERS ALL DAY SESSION ...   | ABOVE PREMIUM | 1                    | Side 90            | 8     |  |

| Name: 3_2 |             | W:240.00 in                    | D:23.00 in    | Avail Space: 2.99 in | Ht Space: 12.00 in |       |  |
|-----------|-------------|--------------------------------|---------------|----------------------|--------------------|-------|--|
| ID        | UPC         | Name                           | Category      | HFacings             | Orientation        | Units |  |
| 93496     | 63598510033 | WHITE CLAW MANGO 12/12 CAN     | ABOVE PREMIUM | 1                    | Top 90             | 3     |  |
| 63326     | 3410051660  | HENRYS HARD SPARKLING VA...    | ABOVE PREMIUM | 1                    | Top 90             | 3     |  |
| 65035     | 8769200686  | TRULY VARIETY BERRY 12/12 C... | ABOVE PREMIUM | 1                    | Top 90             | 3     |  |
| 43031     | 8769200424  | TRULY VARIETY CITRUS 12/12 ... | ABOVE PREMIUM | 1                    | Top 90             | 3     |  |
| 104272    | 8769200991  | TRULY LEMONADE VARIETY 12...   | ABOVE PREMIUM | 1                    | Top 90             | 3     |  |
| 3257      | 3410008722  | REDDS 12/12 BTL                | ABOVE PREMIUM | 1                    | Side               | 2     |  |
| 107115    | 7031001647  | SEAGRAMS ESCAPE ITALIAN IC...  | ABOVE PREMIUM | 1                    | Side               | 2     |  |
| 22096     | 8769283134  | TWISTED TEA ORIGINAL 12/12 ... | ABOVE PREMIUM | 1                    | Side 90            | 4     |  |
| 22076     | 8769275134  | TWISTED TEA HALF AND HALF...   | ABOVE PREMIUM | 1                    | Side 90            | 4     |  |
| 65025     | 63598526042 | MIKES HARDER VARIETY PACK...   | ABOVE PREMIUM | 1                    | Side 90            | 4     |  |
| 6413      | 63598510062 | MIKES HARD LEMONADE 6/11.2...  | ABOVE PREMIUM | 1                    | Front              | 4     |  |
| 22090     | 8769282102  | ANGRY ORCHARD CRISP APPL...    | ABOVE PREMIUM | 1                    | Front              | 4     |  |
| 21823     | 8769200033  | ANGRY ORCHARD CRISP APPL...    | ABOVE PREMIUM | 1                    | Side               | 2     |  |
| 17284     | 8382010401  | GUINNESS DRAUGHT STOUT 6/...   | ABOVE PREMIUM | 1                    | Front              | 4     |  |
| 14096     | 78615000016 | STELLA ARTOIS 12/11.2 CAN      | ABOVE PREMIUM | 1                    | Top 90             | 4     |  |
| 11342     | 7289000159  | HEINEKEN LIGHT 12/12 BTL       | ABOVE PREMIUM | 1                    | Side               | 2     |  |
| 11301     | 7289000020  | HEINEKEN 12/12 CAN             | ABOVE PREMIUM | 1                    | Side 90            | 4     |  |
| 10790     | 7231123021  | SOL 12/12 BTL                  | ABOVE PREMIUM | 1                    | Side               | 2     |  |
| 15429     | 8066095715  | MODELO ESPECIAL 12/12 CAN      | ABOVE PREMIUM | 1                    | Side 90            | 4     |  |
| 15449     | 8066095787  | MODELO NEGRA 12/12 BTL         | ABOVE PREMIUM | 1                    | Front              | 2     |  |
| 15416     | 8066095675  | CORONA LIGHT 12/12 BTL         | ABOVE PREMIUM | 2                    | Front              | 6     |  |
| 51878     | 3354495053  | CORONA FAMILIAR 12/12 BTL      | ABOVE PREMIUM | 1                    | Side               | 2     |  |
| 58827     | 73692011651 | GOOSE ISLAND IPA 15/12 CAN     | ABOVE PREMIUM | 1                    | Side 90            | 2     |  |
| 107006    | 73692011926 | GOOSE ISLAND SO-LO IPA 15/1... | ABOVE PREMIUM | 1                    | Side 90            | 2     |  |
| 21957     | 8769210014  | SAMUEL ADAMS BOSTON LAG...     | ABOVE PREMIUM | 1                    | Side               | 2     |  |

# SHOPRITE\_272

Store # 272

|       |             |                               |               |   |         |   |
|-------|-------------|-------------------------------|---------------|---|---------|---|
| 17211 | 8378337512  | SIERRA NEVADA PALE ALE 12/... | ABOVE PREMIUM | 1 | Side    | 2 |
| 99516 | 72383021212 | LAGUNITAS IPA 12/12 CAN       | ABOVE PREMIUM | 1 | Top 90  | 3 |
| 99754 | 7199009592  | BLUE MOON LIGHT SKY 12/12 ... | ABOVE PREMIUM | 1 | Top 90  | 3 |
| 1620  | 1820028156  | SHOCK TOP BELGIAN WHITE 1...  | ABOVE PREMIUM | 1 | Side 90 | 2 |
| 75134 | 68174500134 | BLUE POINT TOASTED LAGER ...  | ABOVE PREMIUM | 1 | Side 90 | 2 |

| Name: 3_3 |             | W:240.00 in                    | D:22.00 in    | Avail Space: 0.94 in | Ht Space: 12.00 in |       |  |
|-----------|-------------|--------------------------------|---------------|----------------------|--------------------|-------|--|
| ID        | UPC         | Name                           | Category      | HFacings             | Orientation        | Units |  |
| 83884     | 63598526087 | WHITE CLAW MANGO 6/12 CAN      | ABOVE PREMIUM | 1                    | Side 90            | 6     |  |
| 6441      | 63598520025 | WHITE CLAW BLACK CHERRY ...    | ABOVE PREMIUM | 1                    | Side 90            | 6     |  |
| 19178     | 85389700227 | BON AND VIV SPIKED SELTZER...  | ABOVE PREMIUM | 1                    | Top 90             | 3     |  |
| 45535     | 8200078142  | SMIRNOFF SPIKED SPARKLING...   | ABOVE PREMIUM | 1                    | Top 90             | 3     |  |
| 86788     | 3410051681  | CAPE LINE VARIETY PACK 12/1... | ABOVE PREMIUM | 1                    | Top 90             | 3     |  |
| 86777     | 3354400013  | CORONA REFRESCA VARIETY ...    | ABOVE PREMIUM | 1                    | Front 90           | 3     |  |
| 107183    | 61300875550 | ARNOLD PALMER SPIKED LEM...    | ABOVE PREMIUM | 1                    | Top 90             | 3     |  |
| 68928     | 61300875220 | ARNOLD PALMER SPIKED HAL...    | ABOVE PREMIUM | 1                    | Top 90             | 3     |  |
| 22092     | 8769283102  | TWISTED TEA ORIGINAL 6/12 B... | ABOVE PREMIUM | 1                    | Front              | 4     |  |
| 22074     | 8769275102  | TWISTED TEA HALF AND HALF...   | ABOVE PREMIUM | 1                    | Front              | 4     |  |
| 6402      | 63598506744 | MIKES HARD BLACK CHERRY ...    | ABOVE PREMIUM | 1                    | Front              | 4     |  |
| 6398      | 63598506074 | MIKES HARD SEASONAL 6/11.2 ... | ABOVE PREMIUM | 1                    | Front              | 4     |  |
| 99509     | 8769200838  | ANGRY ORCHARD UNFILTERE...     | ABOVE PREMIUM | 1                    | Front              | 4     |  |
| 85041     | 8769200754  | ANGRY ORCHARD ROSE 12/12 ...   | ABOVE PREMIUM | 1                    | Top 90             | 3     |  |
| 17305     | 8382012393  | GUINNESS EXTRA STOUT 6/12 ...  | ABOVE PREMIUM | 1                    | Front              | 4     |  |
| 14089     | 78615000001 | STELLA ARTOIS 6/11.2 BTL       | ABOVE PREMIUM | 1                    | Front              | 4     |  |
| 89681     | 7289000621  | HEINEKEN 0.0 NEAR BEER 6/12... | ABOVE PREMIUM | 1                    | Front              | 4     |  |
| 11298     | 7289000011  | HEINEKEN 6/12 BTL              | ABOVE PREMIUM | 1                    | Front              | 4     |  |
| 570       | 18195400004 | PERONI 12/11.2 BTL             | ABOVE PREMIUM | 1                    | Side               | 2     |  |
| 15442     | 8066095765  | MODELO ESPECIAL 6/12 BTL       | ABOVE PREMIUM | 1                    | Front              | 3     |  |
| 15448     | 8066095785  | MODELO NEGRA 6/12 BTL          | ABOVE PREMIUM | 1                    | Front              | 3     |  |
| 15406     | 8066095621  | CORONA LIGHT 12/12 CAN         | ABOVE PREMIUM | 1                    | Top 90             | 3     |  |
| 44952     | 3354495042  | CORONA PREMIER 12/12 BTL       | ABOVE PREMIUM | 3                    | Side               | 6     |  |
| 13009     | 75452700022 | NEW BELGIUM FAT TIRE 6/12 B... | ABOVE PREMIUM | 1                    | Front              | 4     |  |
| 13037     | 75452700161 | NEW BELGIUM FAT TIRE 12/12 ... | ABOVE PREMIUM | 1                    | Top 90             | 2     |  |
| 21856     | 8769200109  | SAMUEL ADAMS SEASONAL 12...    | ABOVE PREMIUM | 1                    | Side 90            | 4     |  |
| 21988     | 8769229103  | SAMUEL ADAMS VARIETY PAC...    | ABOVE PREMIUM | 1                    | Side               | 2     |  |
| 3494      | 3410051607  | LEINIES SEASONAL PRIMARY 1...  | ABOVE PREMIUM | 1                    | Side               | 2     |  |
| 10180     | 7199009511  | BLUE MOON BELGIAN WHITE 6...   | ABOVE PREMIUM | 1                    | Front              | 4     |  |
| 52926     | 81601402080 | SOUTHERN TIER OVERPACKD ...    | ABOVE PREMIUM | 1                    | Side 90            | 2     |  |
| 10031     | 7167007106  | SARANAC 12 BEERS 12/12 BTL     | ABOVE PREMIUM | 1                    | Side               | 2     |  |

| Name: 3_4 |             | W:240.00 in                   | D:23.00 in    | Avail Space: 1.20 in | Ht Space: 15.00 in |       |  |
|-----------|-------------|-------------------------------|---------------|----------------------|--------------------|-------|--|
| ID        | UPC         | Name                          | Category      | HFacings             | Orientation        | Units |  |
| 6380      | 63598502598 | WHITE CLAW NATURAL LIME 6/... | ABOVE PREMIUM | 1                    | Side 90            | 6     |  |
| 6442      | 63598520028 | WHITE CLAW RUBY GRAPEFR...    | ABOVE PREMIUM | 1                    | Side 90            | 6     |  |
| 89831     | 1820028548  | BON AND VIV SPIKED SELTZER... | ABOVE PREMIUM | 1                    | Top 90             | 3     |  |
| 106983    | 1820020215  | BUD LIGHT SELTZER BLACK C...  | ABOVE PREMIUM | 1                    | Top 90             | 3     |  |
| 107855    | 1820020219  | BUD LIGHT SELTZER MANGO 1...  | ABOVE PREMIUM | 1                    | Top 90             | 3     |  |
| 97735     | 4182770112  | ARCTIC SUMMER SPIKED VARI...  | ABOVE PREMIUM | 1                    | Top 90             | 3     |  |
| 1464      | 1820020993  | BUD LIGHT LIME STRAW-BER...   | ABOVE PREMIUM | 1                    | Side 90            | 4     |  |
| 103099    | 2210005002  | PABST HARD COFFEE 4/11 CAN    | ABOVE PREMIUM | 1                    | Front              | 8     |  |
| 65020     | 61300874833 | ARNOLD PALMER SPIKED HAL...   | ABOVE PREMIUM | 1                    | Front              | 5     |  |
| 16651     | 8218422601  | JACK DANIELS DOWNHOME P...    | ABOVE PREMIUM | 1                    | Front              | 4     |  |
| 16653     | 8218422603  | JACK DANIELS WATERMELON ...   | ABOVE PREMIUM | 1                    | Front              | 4     |  |
| 16655     | 8218422605  | JACK DANIELS BLACK JACK C...  | ABOVE PREMIUM | 1                    | Front              | 4     |  |
| 16652     | 8218422602  | JACK DANIELS LYNCHBURG L...   | ABOVE PREMIUM | 1                    | Front              | 4     |  |
| 21866     | 8769200149  | ANGRY ORCHARD GREEN APP...    | ABOVE PREMIUM | 1                    | Front              | 4     |  |
| 65019     | 8769200660  | ANGRY ORCHARD ROSE 6/12 B...  | ABOVE PREMIUM | 1                    | Front              | 4     |  |
| 17299     | 8382012368  | GUINNESS DRAUGHT STOUT 8/...  | ABOVE PREMIUM | 1                    | Front 90           | 4     |  |

# SHOPRITE\_272

Store # 272

|       |             |                                |               |   |         |   |
|-------|-------------|--------------------------------|---------------|---|---------|---|
| 17293 | 8382012360  | GUINNESS DRAUGHT STOUT 4/...   | ABOVE PREMIUM | 1 | Side    | 4 |
| 11348 | 7289000188  | HEINEKEN LIGHT 12/12 CAN       | ABOVE PREMIUM | 1 | Top 90  | 3 |
| 11310 | 7289000042  | HEINEKEN 6/7 BTL               | ABOVE PREMIUM | 1 | Front   | 5 |
| 568   | 18195400002 | PERONI 6/11.2 BTL              | ABOVE PREMIUM | 1 | Front   | 4 |
| 22477 | 8839400006  | SPATEN OKTOBERFEST 6/12 B...   | ABOVE PREMIUM | 1 | Front   | 4 |
| 15426 | 8066095695  | CORONA 12/12 CAN               | ABOVE PREMIUM | 1 | Side 90 | 4 |
| 15400 | 8066095605  | CORONA 6/12 BTL                | ABOVE PREMIUM | 1 | Front   | 4 |
| 15400 | 8066095605  | CORONA 6/12 BTL                | ABOVE PREMIUM | 1 | Side    | 2 |
| 15408 | 8066095625  | CORONA LIGHT 6/12 BTL          | ABOVE PREMIUM | 1 | Front   | 4 |
| 44964 | 3354495041  | CORONA PREMIER 6/12 BTL        | ABOVE PREMIUM | 1 | Front   | 4 |
| 44966 | 3354495044  | CORONA PREMIER 12/12 CAN       | ABOVE PREMIUM | 1 | Top 90  | 3 |
| 45591 | 63848900189 | DOGFISH HEAD 60 MINUTE IPA...  | ABOVE PREMIUM | 1 | Top 90  | 2 |
| 65038 | 75452700885 | NEW BELGIUM VOODOO JUICY...    | ABOVE PREMIUM | 1 | Side    | 6 |
| 21995 | 8769230050  | SAMUEL ADAMS SEASONAL 6/...    | ABOVE PREMIUM | 1 | Front   | 4 |
| 65030 | 8769200497  | SAMUEL ADAMS 76 12/12 CAN      | ABOVE PREMIUM | 1 | Side 90 | 4 |
| 3492  | 3410051605  | LEINIES SEASONAL PRIMARY 6...  | ABOVE PREMIUM | 1 | Front   | 4 |
| 62048 | 7199009561  | BLUE MOON MANGO WHEAT 6/...    | ABOVE PREMIUM | 1 | Front   | 4 |
| 15961 | 81760601020 | CAPTAIN LAWRENCE IPA 6/12 ...  | ABOVE PREMIUM | 1 | Front   | 4 |
| 90228 | 86036700072 | SLOOP JUICE BOMB IPA 6/12 C... | ABOVE PREMIUM | 1 | Side    | 4 |
| 52632 | 86326700005 | NEWBURGH MEGA BOSS 4/16 ...    | ABOVE PREMIUM | 1 | Front   | 4 |

| Name: 8_7 |            | W:240.00 in                | D:30.00 in    | Avail Space: 0.74 in | Ht Space: 20.50 in |       |
|-----------|------------|----------------------------|---------------|----------------------|--------------------|-------|
| ID        | UPC        | Name                       | Category      | HFacings             | Orientation        | Units |
| 1830      | 1820096624 | MICHELOB ULTRA 18/12 BTL   | ABOVE PREMIUM | 1                    | Side               | 4     |
| 1850      | 1820096721 | MICHELOB ULTRA 18/12 CAN   | ABOVE PREMIUM | 1                    | Side 90            | 6     |
| 1849      | 1820096715 | MICHELOB ULTRA 24/12 CAN   | ABOVE PREMIUM | 1                    | Top                | 9     |
| 1341      | 1820012998 | LANDSHARK 12/12 BTL        | ABOVE PREMIUM | 1                    | Side               | 6     |
| 5922      | 6206705155 | LABATT BLUE 12/11.5 BTL    | ABOVE PREMIUM | 1                    | Side               | 6     |
| 23915     | 8992441003 | YUENGLING LAGER 24/12 BTL  | PREMIUM       | 1                    | Side               | 2     |
| 10353     | 7199030079 | COORS LIGHT 24/12 BTL (HG) | PREMIUM       | 1                    | Side               | 3     |
| 10380     | 7199031600 | COORS LIGHT 24/12 CAN      | PREMIUM       | 2                    | Side 90            | 10    |
| 10352     | 7199030078 | COORS LIGHT 18/12 BTL      | PREMIUM       | 1                    | Side               | 4     |
| 3541      | 3410057306 | LITE 24/12 CAN             | PREMIUM       | 1                    | Top                | 8     |
| 3532      | 3410057256 | LITE 18/12 BTL             | PREMIUM       | 1                    | Side               | 4     |
| 3531      | 3410057243 | LITE 24/12 BTL (HG)        | PREMIUM       | 1                    | Side               | 4     |
| 1670      | 1820053308 | BUD LIGHT 18/12 BTL        | PREMIUM       | 1                    | Front              | 8     |
| 1672      | 1820053349 | BUD LIGHT 24/12 BTL (HG)   | PREMIUM       | 1                    | Side               | 4     |
| 1664      | 1820053168 | BUD LIGHT 24/12 CAN        | PREMIUM       | 1                    | Top                | 8     |
| 1312      | 1820011349 | BUD 24/12 BTL (HG)         | PREMIUM       | 1                    | Side               | 4     |
| 2326      | 2210011219 | PABST 30/12 CAN            | ECONOMY       | 1                    | Side               | 4     |
| 3193      | 3410001341 | HIGH LIFE 30/12 CAN        | ECONOMY       | 1                    | Side               | 4     |
| 1681      | 1820061030 | BUSCH 30/12 CAN            | ECONOMY       | 1                    | Side               | 4     |
| 92510     | 1820020133 | NATURDAYS 12/12 CAN        | ECONOMY       | 1                    | Side 90            | 8     |
| 61975     | 1820020077 | NATURAL LIGHT 15/12 CAN    | ECONOMY       | 1                    | Side 90            | 8     |
| 61976     | 1820020078 | NATTY DADDY 15/12 CAN      | ECONOMY       | 1                    | Side 90            | 8     |
| 45405     | 7199048045 | KEYSTONE LIGHT 15/12 CAN   | ECONOMY       | 1                    | Side 90            | 6     |
| 52793     | 7199028151 | KEYSTONE ICE 15/12 CAN     | ECONOMY       | 1                    | Side 90            | 6     |

| Name: 7_5 |            | W:192.00 in                  | D:23.00 in    | Avail Space: 2.96 in | Ht Space: 17.00 in |       |
|-----------|------------|------------------------------|---------------|----------------------|--------------------|-------|
| ID        | UPC        | Name                         | Category      | HFacings             | Orientation        | Units |
| 1241      | 1820006991 | MICHELOB ULTRA 12/12 CAN     | ABOVE PREMIUM | 1                    | Side               | 4     |
| 1228      | 1820005990 | MICHELOB ULTRA 12/12 BTL     | ABOVE PREMIUM | 1                    | Front              | 5     |
| 1356      | 1820014990 | BUD LIGHT LIME 12/12 BTL     | ABOVE PREMIUM | 1                    | Side               | 2     |
| 69618     | 1820020080 | BUD LIGHT ORANGE 12/12 BTL   | ABOVE PREMIUM | 1                    | Side               | 2     |
| 107011    | 1820020201 | BUDWEISER NITRO GOLD 12/1... | ABOVE PREMIUM | 1                    | Side 90            | 6     |
| 23903     | 8992427898 | YUENGLING LAGER 12/12 CAN    | PREMIUM       | 1                    | Side 90            | 6     |
| 23928     | 8992488007 | YUENGLING LAGER 24/12 CAN    | PREMIUM       | 1                    | Side 90            | 3     |
| 23902     | 8992427896 | YUENGLING LAGER 12/12 BTL    | PREMIUM       | 1                    | Front              | 5     |

# SHOPRITE\_272

Store # 272

|       |            |                               |         |   |         |   |
|-------|------------|-------------------------------|---------|---|---------|---|
| 10329 | 7199030017 | COORS LIGHT 18/12 CAN         | PREMIUM | 1 | Top     | 9 |
| 10329 | 7199030017 | COORS LIGHT 18/12 CAN         | PREMIUM | 1 | Top 90  | 3 |
| 10284 | 7199017038 | COORS BANQUET 18/12 BTL (S... | PREMIUM | 1 | Side    | 2 |
| 3552  | 3410057340 | LITE 18/12 CAN                | PREMIUM | 1 | Side 90 | 3 |
| 3552  | 3410057340 | LITE 18/12 CAN                | PREMIUM | 1 | Top 90  | 2 |
| 1667  | 1820053218 | BUD LIGHT 18/12 CAN           | PREMIUM | 1 | Side 90 | 4 |
| 1056  | 1820000769 | BUD LIGHT 12/12 BTL           | PREMIUM | 1 | Front   | 5 |
| 1304  | 1820011168 | BUD 24/12 CAN                 | PREMIUM | 1 | Top     | 6 |
| 1310  | 1820011308 | BUD 18/12 BTL                 | PREMIUM | 1 | Front   | 5 |
| 1307  | 1820011218 | BUD 18/12 CAN                 | PREMIUM | 1 | Side 90 | 3 |
| 1684  | 1820061047 | BUSCH 12/12 CAN               | ECONOMY | 1 | Side 90 | 6 |
| 1071  | 1820000801 | BUSCH LIGHT 12/12 CAN         | ECONOMY | 1 | Side 90 | 6 |
| 9886  | 7143934450 | ROLLING ROCK 12/12 CAN        | ECONOMY | 1 | Side 90 | 6 |

| Name: 7_6 |            | W:192.00 in                   | D:23.00 in    | Avail Space: 2.57 in | Ht Space: 11.00 in |       |  |
|-----------|------------|-------------------------------|---------------|----------------------|--------------------|-------|--|
| ID        | UPC        | Name                          | Category      | HFacings             | Orientation        | Units |  |
| 58373     | 1820020019 | MICHELOB ULTRA LIME CACTU...  | ABOVE PREMIUM | 1                    | Side               | 2     |  |
| 1121      | 1820000884 | MICHELOB LIGHT 12/12 BTL      | ABOVE PREMIUM | 1                    | Side               | 2     |  |
| 65828     | 1820020083 | MICHELOB ULTRA PURE GOLD...   | ABOVE PREMIUM | 1                    | Front              | 3     |  |
| 1378      | 1820015983 | BUD LIGHT LIME 12/12 CAN      | ABOVE PREMIUM | 1                    | Top 90             | 3     |  |
| 70307     | 1820020090 | BUD LIGHT ORANGE 12/12 CAN    | ABOVE PREMIUM | 1                    | Top 90             | 3     |  |
| 1428      | 1820018992 | BUD LIGHT PLATINUM 12/12 BTL  | ABOVE PREMIUM | 1                    | Side               | 2     |  |
| 23909     | 8992429386 | YUENGLING BLACK AND TAN 1...  | PREMIUM       | 1                    | Front              | 3     |  |
| 68457     | 8992433125 | YUENGLING GOLDEN PILSNER ...  | PREMIUM       | 1                    | Side               | 2     |  |
| 107283    | 7199070028 | COORS LIGHT 12/12 CAN (SLE... | PREMIUM       | 2                    | Top 90             | 6     |  |
| 10348     | 7199030069 | COORS LIGHT 12/12 BTL         | PREMIUM       | 2                    | Side               | 4     |  |
| 10234     | 7199010020 | COORS BANQUET 18/12 CAN       | PREMIUM       | 1                    | Side 90            | 2     |  |
| 3565      | 3410057509 | LITE 12/12 BTL                | PREMIUM       | 1                    | Side               | 2     |  |
| 1667      | 1820053218 | BUD LIGHT 18/12 CAN           | PREMIUM       | 1                    | Side 90            | 2     |  |
| 1659      | 1820053047 | BUD LIGHT 12/12 CAN           | PREMIUM       | 1                    | Top                | 4     |  |
| 1472      | 1820021979 | BUD 8/16 BTL (AL)             | PREMIUM       | 1                    | Front              | 4     |  |
| 1058      | 1820000771 | BUD 12/12 BTL                 | PREMIUM       | 1                    | Side               | 2     |  |
| 68563     | 1820020068 | BUDWEISER RESERVE SEASO...    | PREMIUM       | 1                    | Side               | 2     |  |
| 2241      | 2210000170 | PABST 12/12 CAN               | ECONOMY       | 1                    | Side 90            | 4     |  |
| 2763      | 3410000007 | HIGH LIFE 6/16 CAN            | ECONOMY       | 1                    | Front              | 4     |  |
| 3197      | 3410001505 | HIGH LIFE 6/12 BTL            | ECONOMY       | 1                    | Front              | 4     |  |
| 3198      | 3410001509 | HIGH LIFE 12/12 BTL           | ECONOMY       | 1                    | Front              | 3     |  |
| 9905      | 7143945712 | ROLLING ROCK 12/12 BTL        | ECONOMY       | 1                    | Side               | 2     |  |

| Name: 8_8 |             | W:240.00 in                    | D:23.00 in    | Avail Space: 0.93 in | Ht Space: 11.50 in |       |  |
|-----------|-------------|--------------------------------|---------------|----------------------|--------------------|-------|--|
| ID        | UPC         | Name                           | Category      | HFacings             | Orientation        | Units |  |
| 86792     | 85777500729 | SAINT ARCHER GOLD 12/12 CAN    | ABOVE PREMIUM | 1                    | Top 90             | 3     |  |
| 1227      | 1820005989  | MICHELOB ULTRA 6/12 BTL        | ABOVE PREMIUM | 1                    | Front              | 4     |  |
| 65024     | 1820020082  | MICHELOB ULTRA PURE GOLD...    | ABOVE PREMIUM | 1                    | Front              | 4     |  |
| 104747    | 1820020210  | BUD LIGHT PEELS VARIETY 12/... | ABOVE PREMIUM | 1                    | Top 90             | 3     |  |
| 107322    | 1820020209  | BUD LIGHT LEMONADE 12/12 C...  | ABOVE PREMIUM | 1                    | Top 90             | 3     |  |
| 1465      | 1820020994  | BUD LIGHT PLATINUM 12/12 CAN   | ABOVE PREMIUM | 1                    | Top 90             | 3     |  |
| 23900     | 8992427891  | YUENGLING LAGER 6/12 BTL       | PREMIUM       | 1                    | Front              | 4     |  |
| 23929     | 8992495432  | YUENGLING BLACK AND TAN 6...   | PREMIUM       | 1                    | Front              | 4     |  |
| 73080     | 8992433481  | YUENGLING GOLDEN PILSNER ...   | PREMIUM       | 1                    | Side 90            | 4     |  |
| 10155     | 7199000008  | COORS LIGHT 6/12 CAN           | PREMIUM       | 1                    | Front              | 8     |  |
| 10322     | 7199030005  | COORS LIGHT 6/12 BTL           | PREMIUM       | 1                    | Front              | 4     |  |
| 10163     | 7199000047  | COORS BANQUET 12/12 CAN        | PREMIUM       | 1                    | Side 90            | 4     |  |
| 10283     | 7199017037  | COORS BANQUET 12/12 BTL (S...  | PREMIUM       | 1                    | Side               | 4     |  |
| 3579      | 3410057636  | LITE 12/12 CAN                 | PREMIUM       | 1                    | Side 90            | 4     |  |
| 1083      | 1820000833  | BUD LIGHT 6/12 BTL             | PREMIUM       | 1                    | Front              | 4     |  |
| 1469      | 1820020998  | BUD LIGHT 8/16 BTL (AL)        | PREMIUM       | 1                    | Front              | 4     |  |
| 1084      | 1820000834  | BUD 6/12 BTL                   | PREMIUM       | 1                    | Front              | 4     |  |

# SHOPRITE\_272

Store # 272

|        |             |                                |               |   |         |    |
|--------|-------------|--------------------------------|---------------|---|---------|----|
| 1297   | 1820011047  | BUD 12/12 CAN                  | PREMIUM       | 1 | Top     | 5  |
| 3135   | 3410000882  | ICEHOUSE 6/16 CAN              | ECONOMY       | 1 | Front   | 4  |
| 624    | 1820000063  | BUSCH 6/16 CAN                 | ECONOMY       | 1 | Front   | 8  |
| 11307  | 7289000030  | BUCKLER NEAR BEER 6/12 BTL     | ABOVE PREMIUM | 1 | Front   | 4  |
| 16707  | 8248812700  | BECKS NEAR BEER 6/12 BTL       | NA BEER       | 1 | Front   | 4  |
| 1065   | 1820000784  | ODOULS NEAR BEER 6/12 BTL      | NA BEER       | 1 | Front   | 4  |
| 1705   | 1820079047  | ODOULS NEAR BEER 12/12 CAN     | NA BEER       | 1 | Side 90 | 4  |
| 97015  | 63598526039 | WHITE CLAW MANGO 1/19.2 CAN    | ABOVE PREMIUM | 2 | Front   | 16 |
| 63674  | 63598526038 | WHITE CLAW BLACK CHERRY ...    | ABOVE PREMIUM | 2 | Front   | 16 |
| 106968 | 3410000097  | VIZZY PINEAPPLE MANGO 1/24 ... | ABOVE PREMIUM | 1 | Front   | 8  |
| 22077  | 8769275231  | TWISTED TEA HALF AND HALF...   | ABOVE PREMIUM | 2 | Front   | 14 |
| 22099  | 8769283231  | TWISTED TEA ORIGINAL 1/24 C... | ABOVE PREMIUM | 2 | Front   | 14 |
| 6470   | 63598524985 | MIKES HARDER CRANBERRY L...    | ABOVE PREMIUM | 2 | Front   | 16 |
| 6462   | 63598524583 | MIKES HARDER LEMONADE 1/...    | ABOVE PREMIUM | 2 | Front   | 16 |
| 56771  | 7031001483  | SEAGRAMS ESCAPES SPIKED ...    | ABOVE PREMIUM | 2 | Front   | 16 |
| 15413  | 8066095641  | CORONA 1/24 BTL                | ABOVE PREMIUM | 2 | Front   | 14 |
| 11367  | 7289000478  | HEINEKEN 1/22 BTL              | ABOVE PREMIUM | 2 | Front   | 14 |

| Name: 10_9 |            | W:48.00 in                    | D:23.00 in | Avail Space: 2.07 in | Ht Space: 9.50 in |       |  |
|------------|------------|-------------------------------|------------|----------------------|-------------------|-------|--|
| ID         | UPC        | Name                          | Category   | HFacings             | Orientation       | Units |  |
| 2191       | 2210000004 | PABST 1/24 CAN                | ECONOMY    | 2                    | Front             | 14    |  |
| 1523       | 1820025003 | BUSCH 1/25 CAN                | ECONOMY    | 2                    | Front             | 16    |  |
| 1533       | 1820025013 | NATTY DADDY 1/25 CAN          | ECONOMY    | 4                    | Front             | 32    |  |
| 1522       | 1820025002 | NATURAL LIGHT 1/25 CAN        | ECONOMY    | 2                    | Front             | 16    |  |
| 1528       | 1820025008 | NATURAL ICE 1/25 CAN          | ECONOMY    | 2                    | Front             | 16    |  |
| 3128       | 3410000820 | MILWAUKEES BEST ICE 1/24 C... | ECONOMY    | 1                    | Front             | 8     |  |
| 13978      | 7825000605 | STEEL RESERVE ALLOY BLK B...  | ECONOMY    | 1                    | Front             | 7     |  |
| 13877      | 7825000328 | STEEL RESERVE 211 1/24 CAN    | ECONOMY    | 2                    | Front             | 16    |  |

| Name: 10_10 |            | W:48.00 in              | D:23.00 in | Avail Space: 2.39 in | Ht Space: 9.50 in |       |  |
|-------------|------------|-------------------------|------------|----------------------|-------------------|-------|--|
| ID          | UPC        | Name                    | Category   | HFacings             | Orientation       | Units |  |
| 1521        | 1820025001 | BUD LIGHT 1/25 CAN      | PREMIUM    | 2                    | Front             | 16    |  |
| 10243       | 7199010071 | COORS BANQUET 1/24 CAN  | PREMIUM    | 3                    | Front             | 24    |  |
| 1520        | 1820025000 | BUD 1/25 CAN            | PREMIUM    | 2                    | Front             | 16    |  |
| 2761        | 3410000005 | HIGH LIFE 1/24 CAN      | ECONOMY    | 1                    | Front             | 8     |  |
| 9868        | 7143900601 | ROLLING ROCK 1/25 CAN   | ECONOMY    | 1                    | Front             | 8     |  |
| 10436       | 7199048024 | KEYSTONE LIGHT 1/24 CAN | ECONOMY    | 4                    | Front             | 32    |  |
| 10412       | 7199047712 | KEYSTONE ICE 1/24 CAN   | ECONOMY    | 3                    | Front             | 24    |  |

| Name: 10_11 |             | W:48.00 in                    | D:23.00 in    | Avail Space: 1.59 in | Ht Space: 9.00 in |       |  |
|-------------|-------------|-------------------------------|---------------|----------------------|-------------------|-------|--|
| ID          | UPC         | Name                          | Category      | HFacings             | Orientation       | Units |  |
| 15415       | 8066095643  | CORONA 1/24 CAN               | ABOVE PREMIUM | 2                    | Front             | 16    |  |
| 11327       | 7289000119  | HEINEKEN 1/24 CAN             | ABOVE PREMIUM | 2                    | Front             | 14    |  |
| 9452        | 7089701331  | FOSTERS 1/25.4 CAN            | ABOVE PREMIUM | 2                    | Front             | 12    |  |
| 9488        | 7089718331  | FOSTERS PREMIUM 1/25.4 CAN    | ABOVE PREMIUM | 2                    | Front             | 12    |  |
| 66037       | 78615000170 | STELLA ARTOIS 1/19.2 CAN      | ABOVE PREMIUM | 1                    | Side              | 8     |  |
| 43248       | 64286013024 | FOUNDERS ALL DAY SESSION ...  | ABOVE PREMIUM | 2                    | Front             | 16    |  |
| 58705       | 63848900306 | DOGFISH HEAD 60 MINUTE IPA... | ABOVE PREMIUM | 2                    | Front             | 16    |  |
| 10346       | 7199030065  | COORS LIGHT 1/24 CAN          | PREMIUM       | 2                    | Front             | 16    |  |
| 2968        | 3410000355  | LITE 1/24 CAN                 | PREMIUM       | 1                    | Front             | 8     |  |

**SHOPRITE\_272**

**Store # 272**

Shop Rite Assortment Worksheet

Name: 272\_40ft\_OPEN\_COLD