

1905 Sunrise Hwy, Bay Shore, NY
24 Foot Cooler



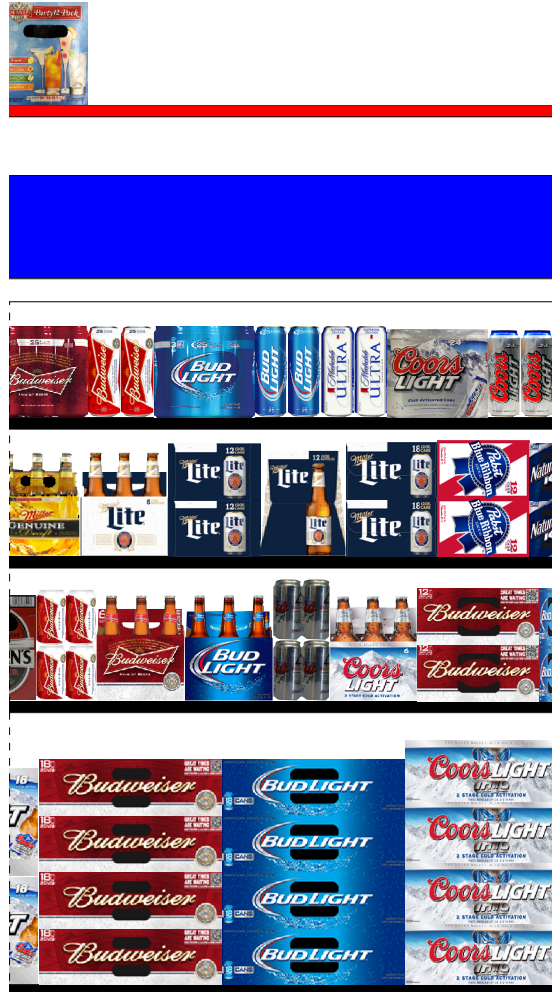
1905 Sunrise Hwy, Bay Shore, NY
24 Foot Cooler



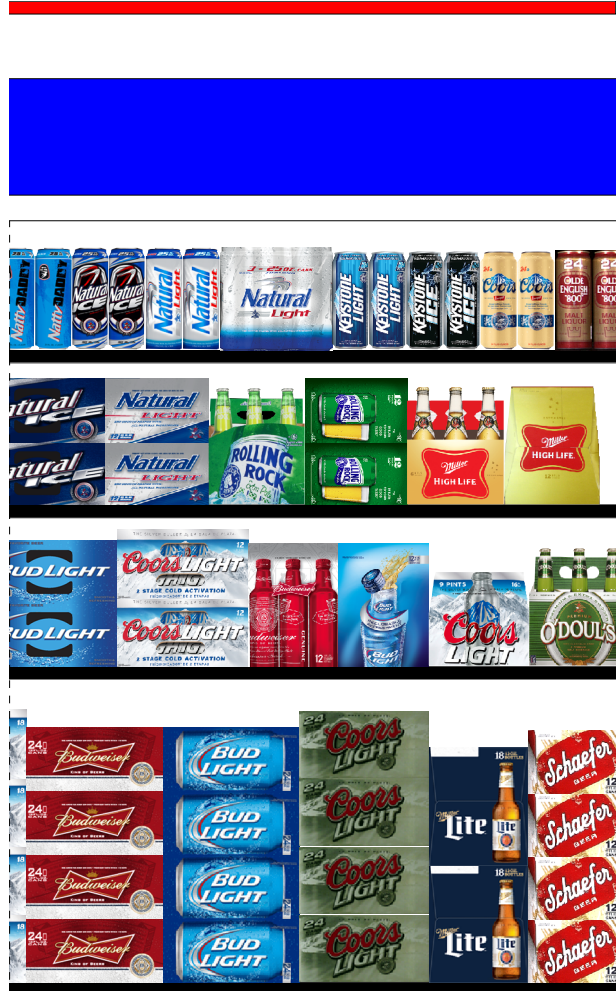
24ft COOLER



1905 Sunrise Hwy, Bay Shore, NY
24 Foot Cooler



1905 Sunrise Hwy, Bay Shore, NY
24 Foot Cooler



PLANOGRAM BACKING TABLE

Shop Rite #801...2015...(Bay Shore) Proposed WITH 4 FEET.psa

Planogram: 24 Foot Cooler

Segment #2 : Shelf #1 DEPTH: 24 in WIDTH: 288 in DISTANCE FROM TOP OF BASE SHELF TO BOTTOM OF SHELF: 76.00 in

POS	# FAC	UPC	NAME	CASES	CAPACITY	UNITS HIGH	DOS	MVMT
1	1	1820011030	Budweiser 30/12D	3.0	3	1	2.9	377.0
2	1	1820053030	Bud Light 30/12D	3.0	3	1	3.0	362.0
3	1	7199030030	Coors Light 30/12D	1.0	1	1	1.0	365.0
4	1	1820061030	Busch 30/12D	1.0	1	1	6.4	57.0
5	1	8982623010	Beers of Mexico 12/12B	1.0	2	1	0.0	0.0
6	1	8200075007	Smirnoff Ice Blueberry Lemonade 6/11B	1.0	4	1	14.9	98.0
7	1	1820015991	Bacardi Silver Signature Sangria 6/12B	1.0	4	1	0.0	0.0
8	1	8200074344	Smirnoff Ice Mango 6/11B	1.0	4	1	9.2	158.0
9	1	76400922082	Imperial Cerveza 6/12B	1.0	4	1	0.0	0.0
10	1	3410015505	Miller 64 6/12B	1.0	4	1	14.0	104.0
11	1	6821309117	Molson Ice 12/12B	1.0	2	1	11.6	63.0
61	1	6821302117	Molson Golden 12/12B	1.0	2	1	11.6	63.0
62	1	8382007152	Smithwicks Irish Ale 6/12B	1.0	4	1	17.4	84.0
63	1	8382023473	Harp Lager 6/12B	1.0	4	1	17.0	86.0
64	1	71905700131	Presidente 6/12B	1.0	4	1	0.0	0.0
65	1	68174521110	Blue Point Toasted Lager 12/12B	1.0	2	1	0.0	0.0
66	1	1820000018	Budweiser 6/16C	1.0	4	1	9.9	148.0
67	1	1820015996	Select 55 6/12B	1.0	4	1	17.8	82.0
68	1	1820096538	Bud Light 15/16AL	2.0	2	1	0.0	0.0
69	1	3410015509	Miller 64 12/12B	1.0	2	1	10.7	68.0
70	1	63598506074	Mikes Hard Seasonal 6/11B	1.0	4	1	10.0	146.0
71	1	1820061047	Busch 12/12C	1.0	2	1	2.1	352.0
72	1	7289010011	Amstel Light 6/12B	1.0	4	1	0.0	0.0
73	1	8769285102	Twisted Tea Raspberry 6/12B	1.0	4	1	0.0	0.0
124	1	8200072908	Smirnoff Ice Party Pack 12/11B	1.0	2	1	13.0	56.0

Segment #2 : Shelf #5 DEPTH: 26 in WIDTH: 288 in DISTANCE FROM TOP OF BASE SHELF TO BOTTOM OF SHELF: 0.00 in

POS	# FAC	UPC	NAME	CASES	CAPACITY	UNITS HIGH	DOS	MVMT
49	1	8066095680	Corona Extra 18/12B	2.0	2	2	4.3	168.0
50	1	8066095623	Corona Light 18/12B	2.0	2	2	0.0	0.0
51	1	8066095615	Corona Extra 12/12B	3.0	6	2	1.9	1171.0
52	1	8066095675	Corona Light 12/12B	2.0	4	2	3.5	419.0
53	1	7231123012	Dos Equis Lager 12/12B	2.0	4	2	18.5	79.0
54	1	7289000152	Heineken 18/12B	2.0	2	2	0.0	0.0
55	1	7289000016	Heineken 12/12B	3.0	6	2	2.6	831.0
56	1	7289000159	Heineken Premium Light 12/12B	2.0	4	2	4.4	329.0
57	1	7289000423	Heineken Premium Light 18/12B	2.0	2	2	0.0	0.0
58	1	78615000014	Stella Artois 12/11B	2.0	4	2	19.7	74.0
59	1	8248812300	Becks 12/12B	2.0	4	2	16.0	91.0
60	1	8769201103	Samuel Adams Seasonal 12/12B	2.0	4	2	13.2	111.0
114	1	1820018992	Bud Light Platinum 12/12B	2.0	4	2	9.1	160.0
115	1	1820014990	Bud Light Lime 12/12B	2.0	4	2	6.0	244.0
116	1	1820005990	Michelob Ultra 12/12B	2.0	4	2	2.8	513.0
117	1	1820096624	Michelob Ultra 18/12B	2.0	2	2	0.0	0.0
118	1	1820000771	Budweiser 12/12B	2.0	4	2	5.3	278.0
119	1	1820000769	Bud Light 12/12B	2.0	4	2	3.2	450.0
120	1	7199030069	Coors Light 12/12B	2.0	4	2	4.0	364.0
121	1	1820011308	Budweiser 18/12B	6.0	6	2	4.8	458.0
122	1	1820053308	Bud Light 18/12B	6.0	6	2	4.1	535.0
123	1	7199030078	Coors Light 18/12B	6.0	6	2	3.7	585.0
144	1	1820011218	Budweiser 18/12C	12.0	12	4	5.1	867.0
145	1	1820053218	Bud Light 18/12C	12.0	12	4	9.4	464.0
146	1	7199030017	Coors Light 18/12C	12.0	12	4	10.2	428.0
167	1	1820011168	Budweiser 24/12C	4.0	4	4	0.0	0.0

PLANOGRAM BACKING TABLE

168	1	1820053168	Bud Light 24/12C	4.0	4	4	0.0	0.0
169	1	7199031600	Coors Light 24/12C	4.0	4	4	0.0	0.0
170	1	3410057256	Miller Lite 18/12B	2.0	2	2	9.5	77.0
171	1	7248002403	Schaefer 12/12C	4.0	8	4	3.2	906.0

Segment #2 : Shelf #4 DEPTH: 22 in WIDTH: 288 in DISTANCE FROM TOP OF BASE SHELF TO BOTTOM OF SHELF: 24.50 in

POS	# FAC	UPC	NAME	CASES	CAPACITY	UNITS HIGH	DOS	MVMT
37	1	8066095605	Corona Extra 6/12B	1.0	4	1	3.0	483.0
38	1	8066095625	Corona Light 6/12B	1.0	4	1	8.3	176.0
39	1	8066095715	Modelo 12/12C	2.0	4	2	0.0	0.0
40	1	7231163012	Dos Equis Lager 6/12B	1.0	4	1	19.7	74.0
41	1	7231133140	Dos Equis Ambar 12/12B	1.0	2	1	0.0	0.0
42	1	8982690033	Tecate 12/12C	2.0	4	2	0.0	0.0
43	1	7289000011	Heineken 6/12B	1.0	4	1	3.9	373.0
44	1	7289000158	Heineken Premium Light 6/12B	1.0	4	1	11.5	127.0
45	1	7289000020	Heineken 12/12C	2.0	4	2	11.9	123.0
46	1	7289000188	Heineken Premium Light 12/12C	2.0	4	2	0.0	0.0
47	1	7289010016	Amstel Light 12/12B	1.0	2	1	7.7	95.0
48	1	78615000001	Stella Artois 6/11B	1.0	4	1	14.7	99.0
101	1	78615000016	Stella Artois 12/11C	1.5	3	1	0.0	0.0
102	1	8248812345	Becks 6/12B	1.0	4	1	9.8	149.0
103	1	8769230050	Samuel Adams Seasonal 6/12B	1.0	4	1	7.5	195.0
104	1	8769210012	Samuel Adams Boston Lgr 6/12B	1.0	4	1	11.1	131.0
105	1	8769229103	Samuel Adams Ssnl Variety-Mix Pk 12/12B	1.0	2	1	12.2	60.0
106	1	8769210014	Samuel Adams Boston Lgr 12/12B	1.0	2	1	8.5	86.0
107	1	7199009511	Blue Moon Belgian White Ale 6/12B	1.0	4	1	7.1	205.0
108	1	7199009532	Blue Moon Seasonal 6/12B	1.0	4	1	13.5	108.0
109	1	7199009536	Blue Moon Seasonal 12/12B	1.0	2	1	0.0	0.0
110	1	7199009516	Blue Moon Belgian White Ale 12/12B	1.0	2	1	6.3	116.0
111	1	1820015981	Shock Top Belgian White Ale 12/12B	1.0	2	1	0.0	0.0
112	1	1820017991	Shock Top Sampler 12/12B	1.0	2	1	0.0	0.0
113	1	7199076400	George Killian's Irish Red 12/12B	1.0	2	1	7.6	96.0
138	1	1820000016	Budweiser 6/12C	1.0	4	2	4.2	350.0
139	1	1820000834	Budweiser 6/12B	1.0	4	1	3.0	491.0
140	1	1820000833	Bud Light 6/12B	1.0	4	1	2.4	608.0
141	1	7199000008	Coors Light 6/12C	1.0	4	2	5.2	282.0
142	1	7199030005	Coors Light 6/12B	1.0	4	1	3.2	450.0
143	1	1820011047	Budweiser 12/12C	2.0	4	2	2.5	593.0
161	1	1820053047	Bud Light 12/12C	2.0	4	2	4.5	322.0
162	1	7199000048	Coors Light 12/12C	2.0	4	2	4.0	366.0
163	1	1820097008	Budweiser 12/16AL	1.0	2	1	0.0	0.0
164	1	1820097009	Bud Light 12/16AL	1.0	2	1	0.0	0.0
165	1	7199030104	Coors Light 9/16AL	1.0	2	1	0.0	0.0
166	1	1820000784	O'Doul's 6/12B	1.0	4	1	0.0	0.0

Segment #2 : Shelf #3 DEPTH: 22 in WIDTH: 288 in DISTANCE FROM TOP OF BASE SHELF TO BOTTOM OF SHELF: 37.00 in

POS	# FAC	UPC	NAME	CASES	CAPACITY	UNITS HIGH	DOS	MVMT
25	1	8043280290	Seagram's Escapes Variety Pack 12/11B	1.0	2	1	0.0	0.0
26	1	63598512998	Mikes Hard Variety Pack 12/11B	1.0	2	1	0.0	0.0
27	1	1820019987	Bud Light Lime-A-Rita 12/8C	3.0	6	2	0.0	0.0
28	1	1820020015	Bud Light Lime Rita Splash 6/12B	1.0	4	1	0.0	0.0
29	1	85389700227	Spiked Seltzer Variety Pack 12/12C	2.0	4	1	0.0	0.0
30	1	1820020002	Best Damn Root Beer 6/12B	1.0	4	1	0.0	0.0
31	1	1820020012	Best Damn Cherry Cola 6/12B	1.0	4	1	0.0	0.0
32	1	88715100213	Coney Island Hard Root Beer 6/12B	1.0	4	1	0.0	0.0
33	1	73692011132	Goose Island India Pale Ale 6/12B	1.0	4	1	0.0	0.0
34	1	73692011502	Goose Island Four Star Pils 6/12B	1.0	4	1	0.0	0.0
35	1	8769204102	Samuel Adams Whitewater IPA 6/12B	1.0	4	1	0.0	0.0
36	1	8769200343	Samuel Adams Rebel Grapefruit IPA 6/12B	1.0	4	1	0.0	0.0
88	1	68174511112	Blue Point Toasted Lager 6/12B	1.0	4	1	18.5	79.0
89	1	68174511118	Blue Point Seasonal 6/12B	1.0	4	1	0.0	0.0
90	1	68174511102	Blue Point Hoptical Illusion 6/12B	1.0	4	1	0.0	0.0

PLANOGRAM BACKING TABLE

91	1	1820013986	Shock Top Belgian White Ale 6/12B	1.0	4	1	20.9	70.0
92	1	1820017993	Shock Top Seasonal 6/12B	1.0	4	1	0.0	0.0
93	1	1820018993	Bud Light Platinum 6/12B	1.0	4	1	13.3	110.0
94	1	1820014991	Bud Light Lime 6/12B	1.0	4	1	7.5	194.0
95	1	1820005989	Michelob Ultra 6/12B	1.0	4	1	6.5	224.0
96	1	1820006991	Michelob Ultra 12/12C SC	1.5	3	1	0.0	0.0
97	1	1820012982	Land Shark Lager 6/12B	1.0	4	1	22.1	66.0
98	1	1820012998	Land Shark Lager 12/12B	1.0	2	1	0.0	0.0
99	1	8992427891	Yuengling Traditional Lager 6/12B	1.0	4	1	7.8	186.0
100	1	8992427896	Yuengling Traditional Lager 12/12B	1.0	2	1	2.9	248.0
132	1	3410017505	Miller Genuine Draft 6/12B	1.0	4	1	14.0	104.0
133	1	3410057505	Miller Lite 6/12B	1.0	4	1	16.0	91.0
134	1	3410057636	Miller Lite 12/12C	2.0	4	2	8.6	169.0
135	1	3410057509	Miller Lite 12/12B	1.0	2	1	0.0	0.0
136	1	3410057340	Miller Lite 18/12C	2.0	2	2	0.0	0.0
137	1	2210000170	Pabst 12/12C	2.0	4	2	9.1	161.0
155	1	1820000964	Natural Ice 12/12C	2.0	4	2	2.6	564.0
156	1	1820015047	Natural Light 12/12C	2.0	4	2	2.2	657.0
157	1	7143934806	Rolling Rock 6/12B	1.0	4	1	15.2	96.0
158	1	7143934450	Rolling Rock 12/12C	2.0	4	2	19.0	77.0
159	1	3410001505	Miller High Life 6/12B	1.0	4	1	11.5	127.0
160	1	3410001509	Miller High Life 12/12B	1.0	2	1	1.5	489.0

Segment #2 : Shelf #2 DEPTH: 22 in WIDTH: 288 in DISTANCE FROM TOP OF BASE SHELF TO BOTTOM OF SHELF: 49.00 in

POS	# FAC	UPC	NAME	CASES	CAPACITY	UNITS HIGH	DOS	MVMT
12	1	63598560611	Mikes Hard Cranberry Lemonade 6/11B	1.0	4	1	0.0	0.0
13	1	63598510062	Mikes Hard Lemonade 6/11B	1.0	4	1	8.6	170.0
14	1	8200072385	Smirnoff Ice 6/11B	1.0	4	1	8.0	183.0
15	1	8200075005	Smirnoff Ice CranberryLimeSplash 6/11B	1.0	4	1	9.7	151.0
16	1	8769285102	Twisted Tea Raspberry 6/12B	1.0	4	1	0.0	0.0
17	1	8769283102	Twisted Tea 6/12B	1.0	4	1	0.0	0.0
18	1	3410098916	Henrys Hard Soda Orange Ale 6/12B	1.0	4	1	0.0	0.0
19	1	3410098922	Henrys Hard Soda Ginger Ale 6/12B	1.0	4	1	0.0	0.0
20	1	9200002000	Small Town Not Your Fathers RtBr 6/12B	1.0	4	1	0.0	0.0
21	1	9200002013	Small Town Not Your Fathers Gngr 6/12B	1.0	4	1	0.0	0.0
22	1	8834510151	Strongbow Gold Hard Cider 6/11B	1.0	4	1	0.0	0.0
23	1	1820024001	Stella Artois Cidre 6/12B	1.0	4	1	0.0	0.0
24	1	8769282102	Angry Orchard Crisp Apple 6/12B	1.0	4	1	0.0	0.0
74	1	8382012393	Guinness Extra Stout 6/12B	1.0	4	1	8.0	183.0
75	1	8382010401	Guinness Draught 6/11B	1.0	4	1	12.3	119.0
76	1	8382012360	Guinness Draught 4/15C	0.7	4	1	17.6	83.0
77	1	8382012422	Guinness Nitro IPA 6/11C	1.0	4	2	0.0	0.0
78	1	85114800500	Great South Bay Blood Orange 6/12B	1.0	4	1	0.0	0.0
79	1	85114800506	Great South Bay Seasonal 6/12B	1.0	4	1	0.0	0.0
80	1	85998900504	Greenport Harbor Harbor Ale 6/12B	1.0	4	1	0.0	0.0
81	1	60940872979	Port Jeff Party Boat IPA 6/12C	1.0	4	2	0.0	0.0
82	1	86273700003	Montauk Session IPA 6/12C	1.0	4	2	0.0	0.0
83	1	86273700000	Montauk Driftwood Ale 6/12C	1.0	4	2	0.0	0.0
84	1	63027946506	Victory Golden Monkey 6/12B	1.0	4	1	0.0	0.0
85	1	67243800068	Ballast Point Grapefruit Sculpin 6/12B	1.0	4	1	0.0	0.0
86	2	7089701331	Fosters Lager 1/25C	1.0	12	1	3.6	1218.0
87	2	1820025014	Bud Light Lime-A-Rita 1/25C	0.9	14	1	0.0	0.0
125	1	1820021985	Budweiser 3/25C	1.4	7	1	0.0	0.0
126	2	1820025000	Budweiser 1/25C	0.9	14	1	0.0	0.0
127	1	1820021986	Bud Light 3/25C	1.4	7	1	0.0	0.0
128	2	1820025001	Bud Light 1/25C	0.9	14	1	0.0	0.0
129	2	1820025010	Michelob Ultra 1/25C	0.9	14	1	0.0	0.0
130	1	7199030120	Coors Light 3/24C	1.4	7	1	0.0	0.0
131	2	7199030065	Coors Light 1/24C	1.2	14	1	3.5	1453.0
147	2	1820025013	Natty Daddy 1/25C	0.9	14	1	0.0	0.0
148	2	1820025008	Natural Ice 1/25C	0.9	14	1	0.0	0.0
149	2	1820025002	Natural Light 1/25C	0.9	14	1	0.0	0.0
150	1	1820021987	Natural Light 3/25C	1.4	7	1	0.0	0.0
151	2	7199048024	Keystone Light 1/24C	1.2	14	1	8.7	586.0

PLANOGRAM BACKING TABLE

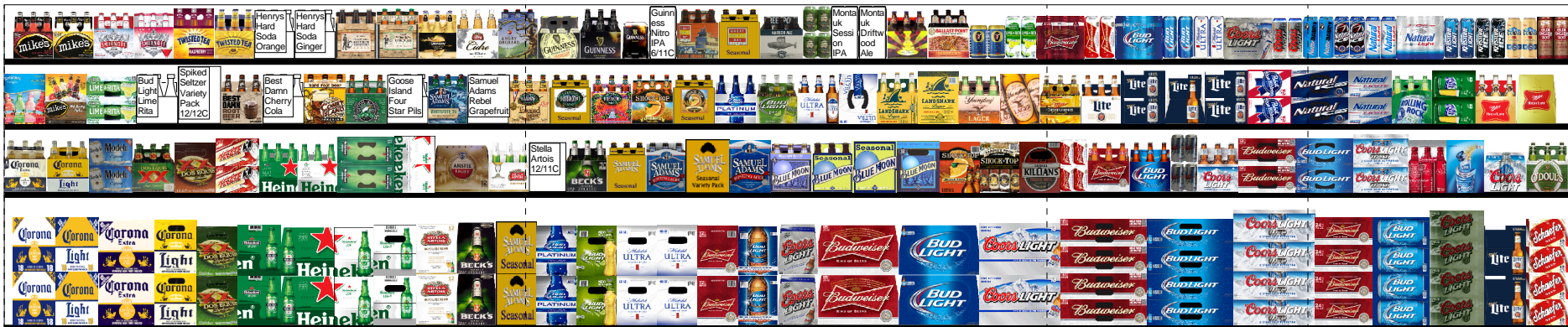
152	2	7199047712	Keystone Ice 1/24C	1.2	14	1	6.3	816.0
153	2	7199010071	Coors 1/24C	1.2	14	1	1.4	3686.0
154	2	3410000612	Olde Eng 800 1/24C	1.2	14	1	16.6	308.0

SKUs on Planogram: 170

Shop Rite #801 Bay Shore
 1905 Sunrise Hwy, Bay Shore, NY
 24 Foot Cooler



24ft COOLER



Print Date

2/16/2016

Segment Width: 288.00

RESET TBD

Surveyed by Clare Rose

Page: 1 of 1